

*Supporting care everywhere*  
Connect. Consult. Collaborate.



Easy and affordable telehealth from Ergotron Healthcare

**ERGOTRON**<sup>®</sup>  
HEALTHCARE

# Telehealth from Ergotron

## Healthcare services delivered at anytime –

Expand healthcare access through telehealth with easy and affordable mobile solutions. Telehealth can expand care by enabling connection and collaboration with medical specialists or teams, regardless of their physical locations.

Our specially designed Telemedicine Carts combine the power to support onboard diagnostics and videoconferencing with the benefits of our 6th-generation StyleView point-of-care carts.

Backed by more than 30 years of expertise and service, you can confidently build a telemedicine platform that matches your needs and budget.

Camera shelf holds web or videoconferencing camera

Dual monitor configuration shown

Also available as single monitor and back-to-back monitor configurations

Ethernet port connectivity

Secure, auto-locking drawer system

Large, configurable bin provides 3 USB ports, adjustable dividers and secure storage for several diagnostic devices with cables

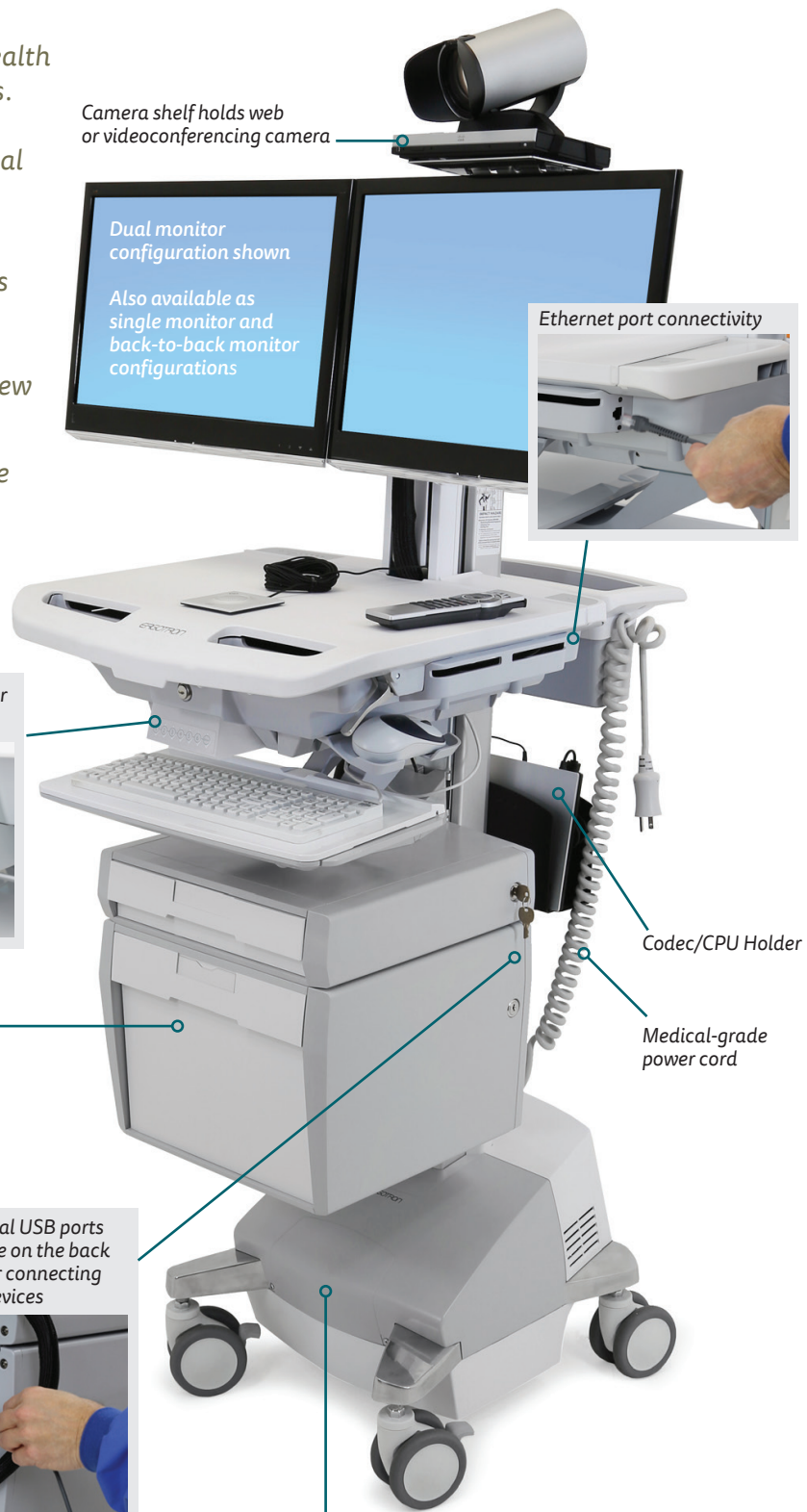
Cart designed for neat and compact cable management

Codec/CPU Holder

Medical-grade power cord

Two additional USB ports are accessible on the back side of bin for connecting additional devices

Rechargeable SLA (Sealed Lead Acid) battery provides dependable, safe and low-cost power



# from anywhere

## StyleView® Telemedicine Carts

**Open architecture** Allows for easy integration of standard equipment

**Lots of connectivity** A total of 5 USB ports are integrated into cart (3 within bin and 2 on the back side); 1 ethernet port is available on the side of the head unit

**Everything you need** Camera and Codec/CPU support, secure and ample storage, connectivity and power outlets

**StyleView quality** Hospital-grade construction, ergonomic and secure

**Available worldwide**

**Safety certified** Entire cart and power system is certified to UL/EN/IEC 60601-1 and CAN/CSA C22.2 No. 601.1 M90  
(Other country-specific certifications pending)

**SINGLE MONITOR SKUs:**

US/CA/MX	SV44-53T1-1	EU	SV44-53T1-2
UK/IE	SV44-53T1-3	HK/MY/SG	SV44-53T1-3
AU/NZ	SV44-53T1-4	CN	SV44-53T1-5
JP	SV44-53T1-6	SA (UK)	SV44-53T1-7
SA (EU)	SV44-53T1-8	IN	SV44-53T1-B

**DUAL MONITOR SKUs:**

US/CA/MX	SV44-56T1-1	EU	SV44-56T1-2
UK/IE	SV44-56T1-3	HK/MY/SG	SV44-56T1-3
AU/NZ	SV44-56T1-4	CN	SV44-56T1-5
JP	SV44-56T1-6	SA (UK)	SV44-56T1-7
SA (EU)	SV44-56T1-8	IN	SV44-56T1-B

**BACK-TO-BACK MONITOR SKUs:**

US/CA/MX	SV44-57T1-1	EU	SV44-57T1-2
UK/IE	SV44-57T1-3	HK/MY/SG	SV44-57T1-3
AU/NZ	SV44-57T1-4	CN	SV44-57T1-5
JP	SV44-57T1-6	SA (UK)	SV44-57T1-7
SA (EU)	SV44-57T1-8	IN	SV44-57T1-B



## Telepresence: Virtual patient care that's ideal for in-home care and care facilities

*Telepresence offers myriad benefits to healthcare professionals and their patients. Virtual patient care is particularly effective for those with physical limitations, chronic illnesses and/or transportation challenges. It is also gaining popularity in the emerging fields of Telepsychology and Telestroke.*

## StyleView® Telepresence Carts

(Available in North America only)



SLA-battery Powered StyleView Telepresence Cart

Non-powered StyleView Telepresence Cart



Telepresence Single Monitor

SV43-53E0-1 (non-powered)  
SV44-53E1-1 (SLA powered)



Telepresence Dual Monitor

SV43-56E0-1 (non-powered)  
SV44-56E1-1 (SLA powered)



Telepresence Back-to-Back Monitors

SV44-57E1-1 (SLA powered)

**Open architecture** Allows for easy integration of standard equipment

**StyleView quality** Hospital-grade construction, ergonomic and secure

**Choose powered or non-powered carts**

**Choose single, dual or back-to-back monitor configurations**

**Safety certified** Entire cart and power system is certified to UL60601-1 and CAN/CSA C22.2 No. 601.1 M90

*In addition to monitor kit, telepresence carts include: LCD pivot, primary drawer, large drawer, camera shelf, codec/CPU holder, T-slot bracket and medical-grade power strip*

## Transform a StyleView Cart\* into a low-cost telepresence cart

Combine the power of videoconferencing with the point-of-care benefits of StyleView.

Telepresence Kits let you easily convert a SV43 (non-powered cart) or SV 44 (powered cart) for use in telepresence applications. Upgrade kits include a large storage drawer (with divider and keys), travel stop, camera shelf for video/web camera, and a Codec/CPU holder. Then choose from single, dual or back-to-back monitor options.



Single Monitor



Dual Monitor



Back-to-Back Monitors



**97-870 SV Telepresence Kit, Single Monitor, for SV43 or SV44 carts**

Includes large drawer with divider and keys, mounting hardware, travel stop, camera shelf and codec/CPU holder with brackets

**97-871 SV Telepresence Kit, Dual Monitor, for SV43 or SV44 carts**

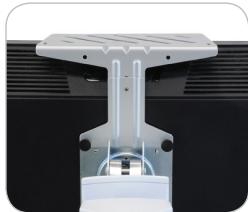
Includes large drawer with divider and keys, mounting hardware, travel stop, camera shelf, codec/CPU holder with brackets and dual display kit

**97-872 SV Telepresence Kit, Back-to-Back Monitors, for SV43 or SV44 carts**

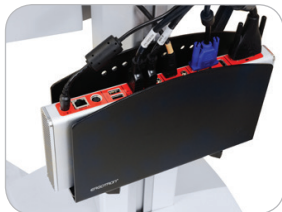
Includes large drawer with divider and keys, mounting hardware, travel stop, camera shelf, codec/CPU holder with brackets and rear-mount monitor kit with hardware

**\* Requirements:**

- Non-powered StyleView  
SV43-1310-0 LCD pivot with 1 drawer
- SLA-powered StyleView  
SV44-1311-1 LCD pivot with 1 drawer



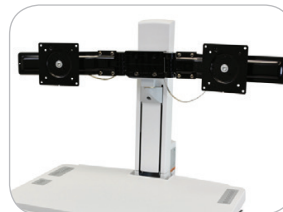
Camera Shelf



Codec/CPU Holder



Large Drawer



Dual Display Kit



Rear-mount Monitor Kit

## More videoconferencing solutions for healthcare



### Neo-Flex® Mobile MediaCenter

Offers easy height adjustability to accommodate sitting or standing audiences and can rotate from portrait to landscape. Supports displays up to 120 lbs (54, 5 kg).



### Neo-Flex® Wideview Workspace

Carts are available in single or dual monitor configurations. Adjustable height allows for sitting or standing preference. Its small footprint with fluid mobility makes it ideal for multiple users within organizations.



### LX Wall Mount Systems and Sit-Stand Combo Arms

Can accommodate equipment needed for telepresence. They are space saving, ergonomic and extremely stable.



*Displays, cameras, diagnostic devices and CPU components shown are sold separately.*

© 2014 Ergotron, Inc. Literature made in US 12/10/2014 Content is subject to change without notification

**Americas Sales and Corporate Headquarters**

St. Paul, MN USA  
(800) 888-8458  
+1-651-681-7600  
www.ergotron.com  
sales@ergotron.com

**EMEA Sales**

Amersfoort, The Netherlands  
+31 33 45 45 600  
www.ergotron.com  
info.eu@ergotron.com

**APAC Sales**

Tokyo, Japan  
www.ergotron.com  
apaccustomerservice@ergotron.com

**Worldwide OEM Sales**

www.ergotron.com  
info.oem@ergotron.com

