

## HIGH PERFORMANCE KVM-OVER-IP SOLUTION

The Dominion® KX III is an enterprise-class KVM-over-IP switch that provides 1, 2, 4 or 8 users with remote BIOS-level control of 8 to 64 servers. It comes with standard features such as DVI/HDMI/DisplayPort digital and analog video, audio, virtual media, smart card/CAC, blade server support, and mobile access. Deploy it alone, or with Raritan's CommandCenter® Secure Gateway (CC-SG) for centralized access to all KX IIIs; or with the KX III User Station for hassle-free IP KVM access.

### IT, DATA CENTERS AND LABS

Eliminate trips to the data center! Java-free Virtual Media lets administrators remotely install software, transfer files, and back up data. Manage up to 8 serial devices with the new Dominion Serial Access Modules (DSAM). Users can even access and manage servers via Apple iOS devices through Raritan's CommandCenter Secure Gateway.

### BROADCAST AND ENTERTAINMENT

The KX III's next generation video processing engine supports dynamic broadcast applications that require 1920x1200 HD resolution, 24 bit color, digital audio, dual monitors and DVI, HDMI, DisplayPort and VGA video. View streaming 1080p video at 30 frames-per-second over your LAN. New high performance IP User Station now available for labs and studios. Fast connections and sub-second switching available with the DKX3-808 model.

### MILITARY GRADE SECURITY AND RELIABILITY

KX III meets widely used U.S. and Canadian government security mandates like: FIPS 140-2 certified cryptographic module, smart-card/CAC authentication, two factor RSA SecurID authentication, and IPv6. And with dual power supplies and dual gigabit Ethernet ports, it is the most reliable and secure digital KVM switch in the industry.

#### BENEFITS

- Increased MTTR & Uptime
- Avoid travel
- Increased productivity
- Increased security

#### FEATURES

- BIOS Level Remote Access and Control
- Blazing, High Performance Audio and Video
- Digital and Analog Video
- Java-Free KVM with Virtual Media
- Military Grade Security
- Two-Factor Authentication
- Up to 8 True Serial Ports
- Mobile Access
- Redundancy for Reliability
- Remote Power Control
- CC-SG Integration
- KX III SDK and API

# PERFECT FOR TRADITIONAL IT AND LAB APPLICATIONS

## COMPLETE AND TOTAL ACCESS AND CONTROL

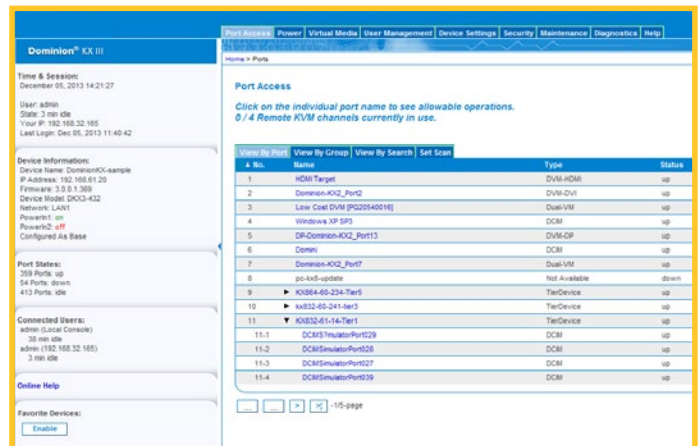
- Browser-based, Java-free, BIOS level access and control
- Java-free Universal Virtual media for remote admin tasks
- Remote booting via CD, DVD, USB, internal and remote drives and images
- Remote power control for Raritan rack PDUs
- Perfect mouse synchronization without changing server mouse settings
- Play and record digital audio
- Chinese and Japanese language support

## CONNECT EASILY AND QUICKLY FROM ANYWHERE, WITHOUT JAVA

- Connect via LAN, WAN, modem or Internet
- Manage centrally via CC-SG; or standalone
- Mobile access on iOS devices via CC-SG
- External telephone or cellular modem for emergency access
- Native Windows and HTML clients support Windows, Linux, Sun and Mac users
- Multi-browser access for Internet Explorer, Chrome, and Firefox access

## A FLEXIBLE AND SCALABLE SOLUTION

- Models available with 8,16, 32, and 64 ports
- CIMs available for PS/2, USB, USB with virtual media, Sun and Sun USB
- CIMs supporting analog VGA video, digital DVI, HDMI, and DisplayPort Video
- Support for Dell, HP, Cisco, and IBM blade servers
- Tiering support for up to 1,024 servers
- Scales to thousands of servers with Raritan's CommandCenter
- Java-free KVM Clients for Windows, Linux and Mac
- Integrate and automate with our new SDK & API



## SECURE AND RELIABLE

### MILITARY GRADE SECURITY & RELIABILITY

- Uses FIPS 140-2-certified cryptographic module
- Smart card / CAC authentication — local and remote
- 256-bit AES encryption
- Dual power supplies and dual Gigabit Ethernet with failover
- All data encrypted, including video transmissions and virtual media
- Secure Linux-based appliance
- Local or centralized authentication via LDAP, AD, and RSA SecurID via RADIUS.
- Dual-stack networking: IPv4 and IPv6
- Configurable user and group permissions
- User-configurable TCP ports
- Supports strong password protection
- Customizable security banner
- Utilize existing digital security certificates
- SNMP v2 and v3 management, Syslog, Email alerts

# OPTIMIZED FOR DYNAMIC VIDEO APPLICATIONS

## MULTI-INDUSTRY VIDEO APPLICATIONS

- Broadcast, entertainment, and gaming
- Military and government
- Security and surveillance
- Scientific, aviation, weather, transportation
- Industrial, manufacturing and factory
- Command and control, operations centers

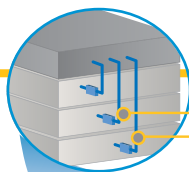
## BLAZING FAST HD VIDEO STREAMING

- 1920x1200 HD Analog & Digital video
- Up to 30 FPS HD Video with Audio
- DVI Digital Local Port provides fast GUI performance
- High quality video with low bandwidth and low 50 msec latency
- Full-screen video display and flexible video scaling
- Dual monitor support
- Dual video cards with extended desktop
- Supports 1920x1080, 1920x1200 and 1600x1200 remote video resolutions
- High (24-bit) color palette support



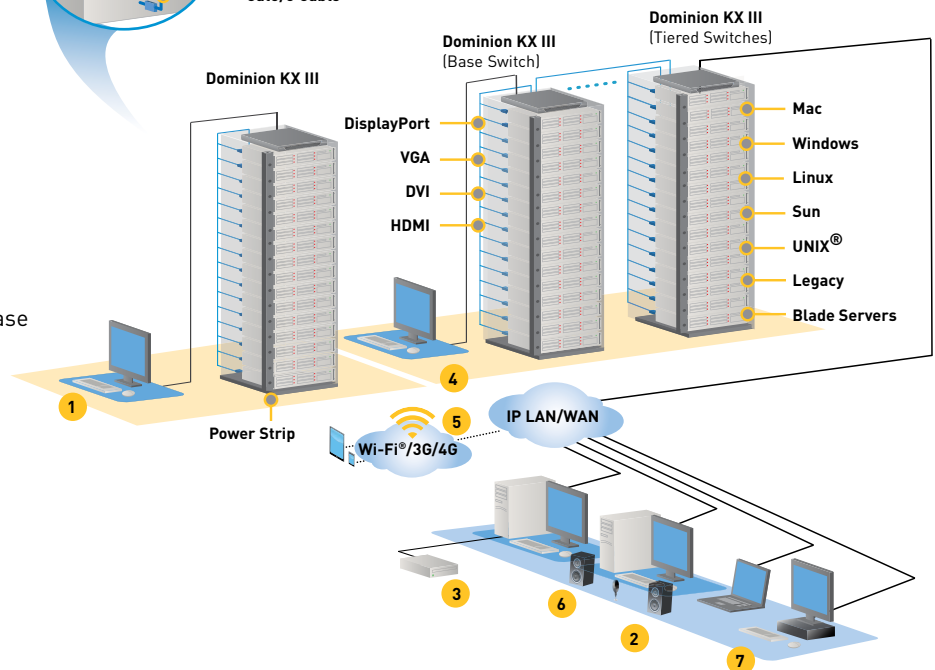
## HASSLE-FREE, HIGH PERFORMANCE IP USER STATION

- Self-contained, hassle-free hardware appliance for environments where a PC is not wanted
- Two 1080p streaming video sessions at 30 FPS
- Ultra-fast connections and sub-second switching
- Eight or more simultaneous IP sessions
- Powerful user interface with single or dual monitors
- Perfect for broadcast, labs, studios, and control rooms
- Use standalone or with CommandCenter



## Dominion KX III Configuration

- 1 Local port access at the rack
- 2 Secure, remote IP-based network access from any location
- 3 Remote virtual media sessions
- 4 "Tiered" local access to servers on base and tiered switches
- 5 Mobile access via iPhone and iPad
- 6 Digital audio feature
- 7 KX III User Station (DKX3-UST)



Specifications	Description	Dimensions (WxDxH)	Weight	Power & Heat Dissipation
DKX3-864	64 server ports, 8 remote users, 1 local port for use at the rack	17.3" x 13.3" x 3.5"; 440mm x 338mm x 88mm	12.39 lbs; 5.62 kg	Dual Power 110V/240V, 50-60Hz 1.8A 60W 52 KCAL
DKX3-832	32 server ports, 8 remote users, 1 local port for use at the rack	17.3" x 13.15" x 1.73"; 440mm x 334mm x 44mm	9.96 lbs; 4.52 kg	
DKX3-808	8 server ports, 8 remote users, 1 local port for use at the rack			
DKX3-464	64 server ports, 4 remote users, 1 local port for use at the rack	17.3" x 13.3" x 3.5"; 440mm x 338mm x 88mm	12.39 lbs; 5.62 kg	
DKX3-432	32 server ports, 4 remote users, 1 local port for use at the rack			
DKX3-416	16 server ports, 4 remote users, 1 local port for use at the rack		9.08 lbs; 4.12 kg	
DKX3-232	32 server ports, 2 remote users, 1 local port for use at the rack			
DKX3-216	16 server ports, 2 remote users, 1 local port for use at the rack	17.3" x 13.15" x 1.73"; 440mm x 334mm x 44mm		
DKX3-132	32 server ports, 1 remote user, 1 local port for use at the rack			
DKX3-116	16 server ports, 1 remote user, 1 local port for use at the rack		8.60 lbs; 3.9 kg	
DKX3-108	8 server ports, 1 remote user, 1 local port for use at the rack			

Dominion Serial Access Modules (DSAMs)	
DSAM-4 — Module with 4 "true" serial ports connecting to the KX III switch via USB	DSAM-2 — Module with 2 "true" serial ports connecting to the KX III switch via USB

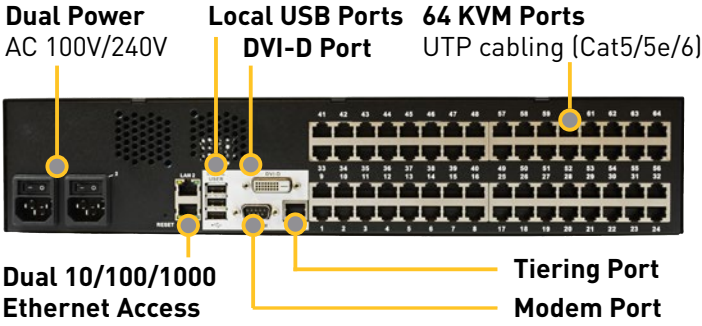
Computer Interface Modules (CIMs)	
D2CIM-DVUSB — Dual USB, VGA CIM for BIOS virtual media and advanced features	D2CIM-DVUSB-DVI — Dual USB, DVI-D CIM for BIOS virtual media and advanced features
D2CIM-VUSB — USB CIM for virtual media and Absolute Mouse Synchronization	D2CIM-DVUSB-HDMI — Dual USB, HDMI CIM for BIOS virtual media and advanced features
DCIM-PS2 — CIM for PS/2	D2CIM-DVUSB-DP — Dual USB, DisplayPort CIM for BIOS virtual media and advanced features
DCIM-SUN — CIM for Sun	D2CIM-PWR — CIM for remote power management
DCIM-USBG2 — CIM for USB and Sun USB	P2CIM-SER — CIM for serial (ASCII) devices

Specifications for All Dominion KX III Models	
Form Factor	1U and 2U full width, rack mountable (brackets included)
Operating Temperature	0° - 45° C (32° - 113° F)
Humidity	0% - 85% RH
Remote Connection Network	Dual 10/100/1000 gigabit Ethernet access; dual-stack: IPv4 and IPv6 DB9(F) DTE
Modem Port Protocols	TCP/IP, HTTP, HTTPS, UDP, RADIUS, SNTP, DHCP, PAP, CHAP, LDAP, SNMP v2 and v3
Local Access Port Video Keyboard/Mouse Tiering Port	Single Link DVI-D [F] USB[F], 1 USB front, 3 USB rear RJ45
Sample Video Resolutions PC text mode PC graphic mode	640x350, 640x480, 720x400 640x480, 800x600, 1024x768, 1152x864, 1280x1024, 1440x900, 1680x1050, 1600x1200, 1920x1080, 1920x1200
Sun video mode	1024x768, 1152x864, 1152x900, 1280x1024
Warranty	Two Years with Advanced Replacement*

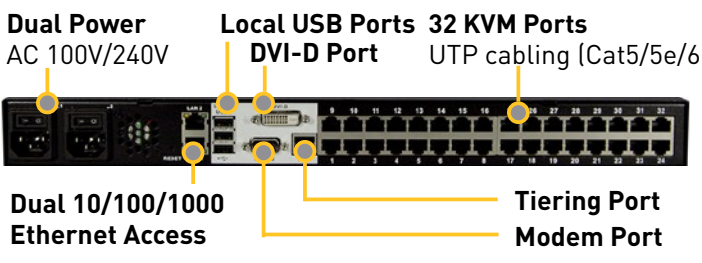


## Dominion KX III Ports and Connections

### DKX3-864



### DKX3-832



Visit [www.raritan.com/kxiii](http://www.raritan.com/kxiii) or Call 1.800.724.8090 for more information.

©2018 Raritan Inc. All rights reserved. Raritan® is a registered trademarks of Raritan Inc. or its wholly-owned subsidiaries. All others are registered trademarks or trademarks of their respective owners. Raritan began developing KVM switches for IT professionals to manage servers remotely in 1985. Today, as a brand of Legrand, we are a leading provider of intelligent rack PDUs. Our solutions increase the reliability and intelligence of data centers in 9 of the top 10 Fortune 500 technology companies. Learn more at [Raritan.com](http://Raritan.com) V1177R7

