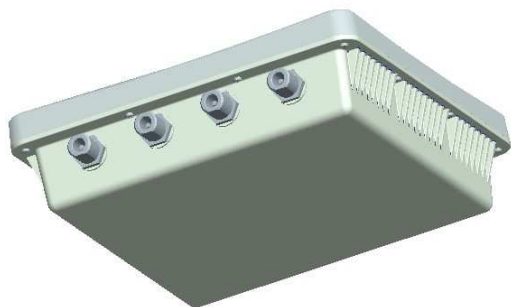


## SMC2890W-AN / SMC2891W-AN

### 802.11a/b/g/n Outdoor Dual Band Wireless Access Point



#### Product Overview

EliteConnect SMC2890W-AN/SMC2891W-AN is an 802.11a/b/g/n dual band, dual radio Outdoor Wireless Enterprise Access Point with 2x2 MIMO configuration design. Via the Gigabit Ethernet port, it can connect to the backbone network through the Gigabit Ethernet interface. It functions by 802.3af PoE and can be powered by PoE switch remotely.

SMC2890W-AN/SMC2891W-AN is the best suitable outdoor wireless LAN solution for extending the network coverage when wired networks are not available. It provides the point to point and point to multi-point wireless bridge function. The latter one is built in with a high performance 5GHz internal antenna.

Optionally, it also provides max. of four N-Type connector ports, two for 2.4GHz and two for 5GHz to support external antenna configuration.

#### Key Features and Benefits

##### Wireless 802.11n Technology

A new 802.11n (MIMO Multi Input Multi Output) Wireless technology, It support 2 x RF transmitting and 2x RF receiving to extend and increase 3~9 times bandwidth and throughput than existing Wi-Fi accessing. It also operates the Spatial Multiplexing to combine the RF signal.

##### Dual Band Access Point

Easy on your budget, simple to install and use dynamic rate shifting automatically matches the best connection speed, and WLAN Network connection keeps users connected to the network, even while roaming.

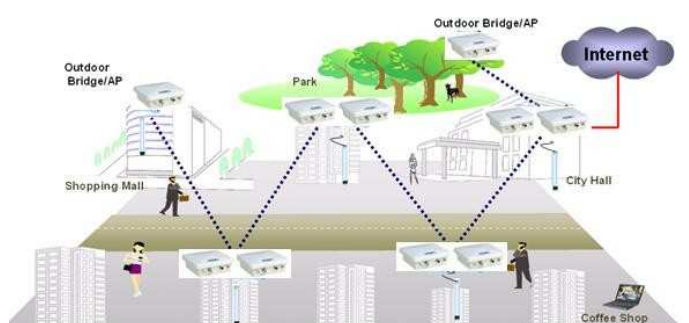
##### Advanced Traffic Management

Supports up to sixteen Virtual Access Point (VAP) interfaces per radio, which allow traffic to be separated for different user groups within the same AP service area. Each radio can support up to 100 wireless clients, shared with all VAP, whereby the clients associate with each VAP in the same way as they would with physically separate access points. This means that each VAP can be configured with its own Service Set Identification (SSID), security settings, VLAN assignments, and other parameters, allowing the AP to serve a diverse range of client needs in an area from a single unit.

##### Full Management Capabilities

SMC2890W-AN/SMC2891W-AN supports Simple Network Management Protocol (SNMP v1/v2/v2c/v3) MIB II and I support. Power over Ethernet is supported with stuffing option PoE circuit. IEEE 802.1x authentication protocol supports Extensible Authentication Protocol (EAP) MD5, Transport Layer Security (TLS), Protected EAP (PEAP), Tunneled TLS (TTLS), EAP-SIM and EAP-AKA.

#### Application Diagram



## Features

### Physical Ports

- 1-port 10/100/1000 BASE-T Gigabit Ethernet (RJ-45) port with power over Ethernet (PoE) support with 802.3af compliant
- 1 Console port with RJ-45 connector
- 4 LEDs : POWER/System, Ethernet, WLAN 1, and WLAN 2 (controlled by GPIO)
- 2 x N-type antenna connector for 2.4GHz 802.11b/g/n radio (both)
- 2 x N-type antenna connectors for 5GHz 802.11a/n radio (SMC2890W-AN only)
- Embedded 5GHz dual polarization directional antenna (SMC2891W-AN only)

### Standards

- IEEE 802.11n 2.4GHz and 5.0GHz
- IEEE 802.11a 5.0GHz
- IEEE 802.11b/g, 2.4GHz
- IEEE 802.3, IEEE802.3u, IEEE 802.3ab
- IEEE 802.3af Power over Ethernet (PoE)
- IEEE 802.11h Regulatory Domain Selection
- Wi-Fi Multimedia (WMM)
- Wireless Distribution System (WDS)

### Wireless Frequency

- 802.11g/n:  
2.4 ~ 2.4835 GHz (US, Canada)  
2.4 ~ 2.4835 GHz (ETSI, Japan)
- 802.11b:  
2.4 ~ 2.4835 GHz (US, Canada)  
2.4 ~ 2.4835 GHz (ETSI)  
2.4 ~ 2.497 GHz (Japan)
- 802.11a/n:  
5.15 ~ 5.25 GHz (lower band) US/Canada, Europe, Japan  
5.25 ~ 5.35 GHz (middle band) US/Canada, Europe, Japan  
5.725 ~ 5.825 GHz (upper band) US/Canada  
5.50 ~ 5.70 GHz Europe

### Wireless Features

- Operating Mode : AP / WDS Bridge / WDS Client
- Auto Channel Selection
- Transmit Power Adjustment
- Up to 16 SSIDs and VAP (Virtual Access Point) support
- Support IEEE802.11h DFS/DFS2 and automatic TPC

### Security

- WEP 64-/128-bits
- Wi-Fi Protected Access (WPA/WPA2)
- WPA/WPA2(PSK) over WDS
- Secure SSH (Secure Sockets Shell) Telnet
- Secure Sockets Layer (SSL) remote management login
- HTTPS
- Access Control List
- RADIUS Authentication
- EAP-MD5 / EAP-TLS / EAP-TTLS/ PEAP/EAP-SIM and EAP-AKA
- SSID Broadcast Disable

### Network Management

- Industrial CLI (Command Line Interface)
- Web Based Management
- Software Download and Upgrade by TFTP/FTP/HTTP
- Configuration file backup and restore by TFTP/FTP
- SNMP management v1/v2/v2c/v3
- System Information – AP Status / Station Status / Event logs
- Dual Image
- Sntp
- Country Selection

### Antenna

- Type : Dipole type
- Gain : per attached external antenna in 2.4GHz,  
8~10 dBi in 5GHz

### Regulatory Compliance

- FCC Part15
- CB, UL, CNS

### Radio Signal Certification

- FCC Part 15C 15.247, 15.207 (2.4GHz)
- NCC (Taiwan)

### Mechanical

- Dimension : 19.5 x 19.0 x 7.4 cm
- Weight 2.65 lbs (1.2 kg)

### Power

- PoE Power Input :  
25.5W for 802.3at, 12.95W for 802.3af
- Power Consumption : 10.56W maximum

### Environmental Specification

- Temperature:  
-10 to +60 Degrees (Standard Operating)  
-20 to +70 Degrees (Storage)
- Humidity: 5% to 95% (Non-condensing)
- IP67 Support

### Warranty

- Please check [www.smc.com](http://www.smc.com) for the warranty terms in your country/region.

## Contact



### Edge-Core Networks Corporation

#### Worldwide Corporate and Sales Headquarters

No. 1 Creation Road III,  
Hsinchu Science Park,  
30077, Taiwan, R.O.C.  
Tel: +886 3 5638888 Fax: +886 3 6686111



#### Singapore

1 Coleman Street  
#07-09, The Adelphi  
Singapore 179803  
Tel: 65-63387667 Fax: 65-63387767

©2012 SMC Networks. EliteConnect™ is a trademark of SMC Networks. Other trademarks or registered trademarks are the property of their respective owners. Information is subject to change without notice. All rights reserved.

Check [www.smc-asia.com](http://www.smc-asia.com) or [www.smc.com](http://www.smc.com) for your local country contact information