

iConverter 2-Module Power Chassis

The iConverter 2-Module Power Chassis is a compact, versatile chassis featuring a single internal universal AC or 18-60VDC power supply. The chassis provides housing for all iConverter multi-service platform modules.

The 2-Module Chassis features a backplane that enables sharing of Ethernet data between two installed iConverter modules that are equipped with Ethernet backplane ports. This enables the chassis to support a variety of networking configurations. Installing an iConverter copper-to-fiber module and a four-port switch module provides a fiber uplink and five 10/100 or 10/100/1000 user ports. A fiber-to-fiber module can be used as an access node in a fiber ring, supporting four 10/100 or 10/100/1000 user ports.

Equipped with an iConverter management module or Network Interface Device (NID), the 2-Module Chassis provides a secure local or remote managed solution capable of supporting advanced Ethernet services for Enterprise and Service Provider networks. It can be remotely managed via IP-based SNMP or Telnet.

In Enterprise networks, the 2-Module Chassis is ideal for extending a fiber network connection across a campus or to add a node to an existing fiber ring. The 2-Module Chassis provides a carrier-grade solution; combining a compact edge switch with a managed media converter.

In Service Provider networks, installing an iConverter NID plug-in module and a four-port switch module provides a securely managed Carrier Ethernet demarcation for one or more User-to-Network Interfaces (UNI). This configuration provides an MEF certified deployment supporting advanced Operation, Administration and Maintenance (OAM) features.

The iConverter 2-Module Chassis can be wall-mounted using the optional wall mounting kit or installed on a stable, flat surface. Utilizing the iConverter 19" rack-mount shelf, two chassis can be securely mounted side-by-side.



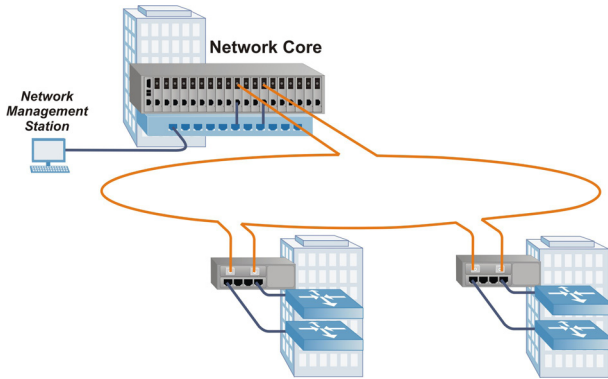
* Modules not included

KEY FEATURES

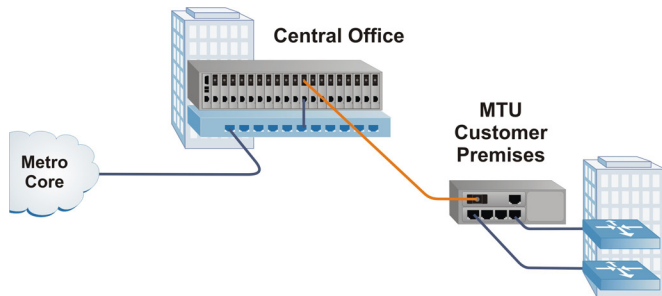
- 2-Module chassis feature an internal AC or DC power supply
- Houses all models of hot-swappable iConverter media converter and switch modules
- NEBS Level 3 Certification
- Ethernet backplane ports for connectivity to installed modules to support a wide variety of configurations
- Management is available with the addition of a management module to the chassis
- SNMP management via NetOutlook® provides real-time port and module status information, remote parameter configuration and trap notification
- Commercial (0 to +50° C) and wide (-40 to +60° C) temperature ranges
- Wall-mount or tabletop options for flexible installations
- Lifetime Warranty and free 24/7 Technical Support

APPLICATION EXAMPLES

In this Enterprise application, media converter modules are installed in a managed iConverter 19-Module Chassis for high-density fiber distribution from UTP switch equipment. A fiber ring connects both buildings to the Network Core. At each building, a fiber-to-fiber module is installed in a 2-Module chassis with a four-port switch module. The two modules share data via the chassis Ethernet Backplane. This configuration functions as a remotely managed departmental switch with a fiber ring to the Network Core and four 10/100 or 10/100/1000 ports. The 2-Module chassis can also be deployed in a point-to-point application as illustrated in the Service Provider application.



In this Service Provider application, media converter modules are installed in a managed iConverter 19-Module Chassis for high-density fiber distribution from UTP switch equipment. At the Customer Premises, an iConverter NID module and a four-port switch module are installed in a 2-Module Chassis. A fiber link between the Central Office and the Customer Premise provides a securely managed demarcation solution supporting advanced OAM fault detection and performance monitoring.



MANAGEMENT

Management is accomplished by installing an iConverter Management Module (NMM2) or Network Interface Device (NID) in the chassis.

The Management Module can be accessed via SNMP, Telnet, and via a serial port. The chassis and modules can be managed with Omnitron's intuitive, graphic-oriented NetOutlook SNMP Management Software or third party SNMP management software. Management via the Telnet and the serial interfaces have an easy-to-use, menu-driven interface.

Fixed parameters that can be monitored include chassis configuration, power supply health status and network traffic statistics for the modules.

In addition to all standard iConverter SNMP traps such as module insertion and removal, 2-Module Chassis models 8230-1, 8231-1, 8232-1, 8235-1, 8236-1 and 8238-1 support Dying Gasp traps (Power Loss Traps) in the event of loss of power. All of these events can be selectively enabled or disabled to generate SNMP traps.

SPECIFICATIONS

| Description | 2-Module AC | 2-Module AC | 2-Module AC* High Airflow | 2-Module DC | 2-Module DC | 2-Module DC* High Airflow |
|---|---|--|--|---|--|--|
| Model Number Standard: Dying Gasp: | 8230-0 8230-1 | 8231-0 8231-1 | - 8232-1 | 8235-0 8235-1 | 8236-0 8236-1 | - 8238-1 |
| Module Capacity | 2 | | | | | |
| Power Supply Capacity | Single Fixed Internal Power Supply | | | | | |
| Regulatory Compliances | UL, CE, FCC Class A, NEBS Level 3, RohS2, WEEE | | | | | |
| Input Power Requirements (typical) | 100 to 240VAC, 50/60Hz 0.5A @ 120VAC | 100 to 240VAC, 50/60Hz 0.5A @ 120VAC | 100 to 240VAC, 50/60Hz 0.5A @ 120VAC | + / - 18 to 60VDC -48VDC @ 1.0A | + / - 18 to 60VDC -48VDC @ 2.0A | + / - 18 to 60VDC -48VDC @ 2.0A |
| Output Power | 8.5 watts 2.6A @ 3.3VDC 1.5A per slot | 16.5 watts 5A @ 3.3VDC 2.5A per slot | 16.5 watts 5A @ 3.3VDC 2.5A per slot | 6.6 watts 2A @ 3.3VDC 1.5A per slot | 16.5 watts 5A @ 3.3VDC 2.5A per slot | 16.5 watts 5A @ 3.3VDC 2.5A per slot |
| Power Connector | IEC 320 Socket | IEC 320 Socket | IEC 320 Socket | 3-Pin Terminal (Isolated) | 3-Pin Terminal (Isolated) | 3-Pin Terminal (Isolated) |
| Dimensions | W: 6.7" x D: 5.51" x H: 1.87" L: 435.6 mm x B: 228.6 mm x H: 44.5 mm | | | | | |
| Weight | 2.5 lb (1.14 kg) | | | | | |
| Temperature | Commercial: 0 to 50°C Wide: -40 to 60°C Storage: -40 to 80°C | | | | | |
| Humidity | 5 to 95% (non-condensing) | | | | | |
| Altitude | - 100m to 4,000m | | | | | |
| MTBF (hrs) | 151,000 | 413,000 | 50,000 | 329,000 | 538,000 | 50,000 |
| Warranty | Lifetime warranty with 24/7/365 free Technical Support | | | | | |

* Required for iConverter XG+ models. Register at www.omnitron-systems.com to download the iConverter XG+ Usage Guide.

ORDERING INFORMATION

| Description | 2-Module Chassis | | | | | |
|---|------------------|--------|--------------------|--------|--------|--------------------|
| | AC | AC | AC High Airflow | DC | DC | DC High Airflow |
| 2-Module Chassis | 8230-0 | 8231-0 | - | 8235-0 | 8236-0 | - |
| 2-Module Chassis with Dying Gasp Support | 8230-1 | 8231-1 | 8232-1 | 8235-1 | 8236-1 | 8238-1 |

For wide temperature (-40 to 60°C), add a "W" to the end of the model number.
Consult factory for extended temperature (-40 to +75°C) models.

| Accessories | |
|--------------|-------------------------|
| Model Number | Description |
| 8249-0 | Wall-Mount Hardware Kit |
| 8260-0 | 19" Rack-Mount Shelf |
| 8090-0 | Blank Module Panel |

Use the [Power Calculator](#) to determine the iConverter chassis power supplies required for your module configuration.

© 2014 Omnitron Systems Technology, Inc. All rights reserved. iConverter and NetOutlook are Registered Trademarks of Omnitron Systems Technology, Inc. Trademarks are owned by their respective companies. Specifications are subject to change without notice.

091-18230-001J 8/14



800-675-8410 • 949-250-6510 • www.omnitron-systems.com • info@omnitron-systems.com • 38 Tesla, Irvine, CA 92618