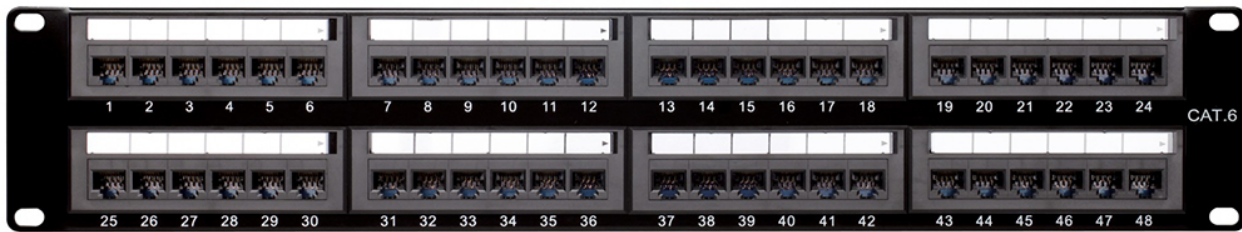


4XEM 48 Port CAT6 Rackmount Patch

Panel 4XEM Part- 4XRMC6PP48



4XEM's Category 6 Patch Panels offer 110-type termination while meeting and exceeding EIA/TIA TSB-40 Cat6 connecting hardware specifications. Color coded for both EIA/TIA 568A & 568B installations. 24 ports with 50µ gold-plated contacts ensure quality connections and a wide range of plug and play options. Clear numbering on both the front and back of each panel provides a quick and easy way to identify cable runs.

4XEM Products Are Available At Your Favorite Online Retailers

WWW.4XEM.COM

Contact Todd Schaus 4XEM sales Rep
1-866-999-4936 Ext.104 tschaus@4xem.com



Features:

- Termination: 110-type
- 50μ gold-plated contacts
- Accommodates top, bottom or side cable entry
- Write-on designation label with clear holder on front and rear
- TSB-40 Cat6 connecting
- Color coded for both EIA/TIA
- Meets and exceeds EIA/TIA

Applications:

- Home
- Connections
- Office
- Servers



4XEM Products Are Available At Your Favorite Online Retailers



Specifications:

Warranty Information	Warranty	1 Year
Hardware	Cabling Standard Mounting Ethernet Ports Termination Style Wiring Diagram	Cat 6 Rackmount 48 110-Type Punch Block T568A/T568B
Physical Characteristics	Color Material Rack Occupancy Product Height Product Width Product Length Weight of Product	Black Steel 2U 3.50 in [88.90 mm] 19.00 in [482.6 mm] 1.34 in [34.1 mm] 2.34 lbs [1.06 kg]
Packaging Information	Package Height Package Width Package Length Shipping (Package) Weight	4 in [101.6 mm] 20 in [508 mm] 2 in [50.8 mm] 2.34 lbs [1.06 kg]
What's in the Box	Included in Package	1x 48 Port Cat 6 Patch Panel 4x M5 Screws 8x Zip Ties

* Product appearance and specifications are subject to change without notice.

* Same day shipping is only available for orders shipping within the United States.

4XEM Products Are Available At Your Favorite Online Retailers

WWW.4XEM.COM

**Contact Todd Schaus 4XEM sales Rep
1-866-999-4936 Ext.104 tschaus@4xem.com**

