



## **PowerLite® 1850W**

MULTIMEDIA PROJECTOR



**Easy. Affordable. Amazing  
widescreen performance.**

Boardroom and classroom presentations get a boost in quality and versatility with the PowerLite 1850W. Adapting to almost any layout, this projector provides the ultimate in setup flexibility. Place the projector anywhere in the room and get perfectly rectangular images using the horizontal keystone correction slider bar. Impressive widescreen (WXGA) resolution and 3700 lumens of color and white light output<sup>1</sup> ensure sharp, larger-than-life images, while a 1.6x optical zoom makes it easy to display larger images from shorter distances, saving valuable space. Advanced connectivity offers even more flexibility with HDMI inputs for both video and audio, 3-in-1 USB Plug 'n Play connectivity and PC-free slideshows.

**Flexible setup** — easy-to-use horizontal keystone correction slider bar and 1.6x optical zoom

**Brilliant widescreen images** — 3700 lumens color and white light output<sup>1</sup>; native WXGA (1280 x 800) resolution and up to 16:10 aspect ratio

**Comprehensive, future-ready connectivity** — HDMI digital input, USB display, PC-free slideshows, and document camera compatibility

**Up to 4000-hour lamp life<sup>2</sup>** — for a lower total cost of ownership



# PowerLite® 1850W MULTIMEDIA PROJECTOR

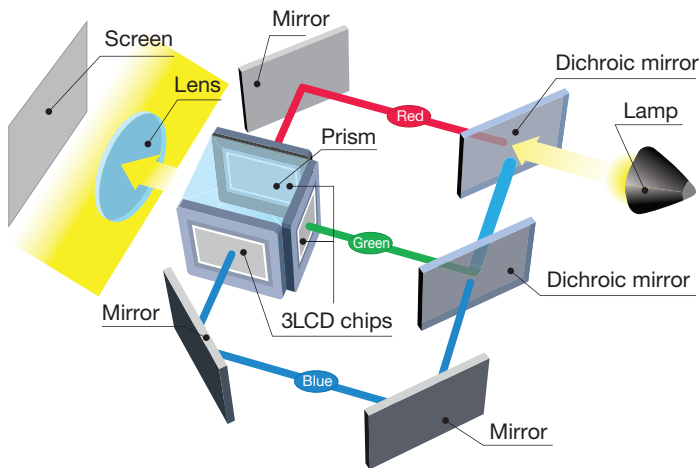
## The best-selling projectors in the world.

Epson offers a wide range of high-quality projectors to meet most any need. Built with image quality and reliability in mind, Epson projectors enhance communication and inspire collaboration, while offering a low total cost of ownership. From ultraportable projectors designed for educational settings to boardroom-ready business projectors, Epson has the model made for you.



### 3LCD technology — for quality and color that's beyond amazing

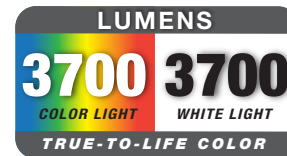
- 3 chips for full-time, vibrant color
- 25% less electricity required per lumen of brightness when compared to 1-chip DLP projectors<sup>3</sup>
- Over 20 years of road-tested reliability built into every projector



▲ 3LCD, 3-chip technology

### Amazing color and white light output

Rich color and detail are critical for presentations — so color light output is essential for achieving optimum performance. The PowerLite 1850W delivers 3700 lumens of color light output and 3700 lumens of white light output<sup>1</sup> for bright, vibrant, colorful images.



High color light output

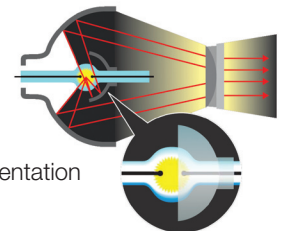


Low color light output

Actual photographs of images taken from two competing projectors run in default mode. Price, resolution and brightness (white light output) are the same for both projectors.

### Energy-efficient E-TORL® lamp, exclusively from Epson

- Delivers more lumens per watt and lasts up to 4000 hours<sup>2</sup>
- Minimizes both light diffraction and light leakage
- E-TORL lamps maximize your presentation time, while minimizing your costs



▲ E-TORL lamp

### Better Products for a Better Future™

For more information on Epson's environmental programs, go to [eco.epson.com](http://eco.epson.com)

#### Eco Features

- Energy-efficient 3LCD light engine
- Energy-efficient E-TORL lamp
- Low power consumption of 0.3 W in Standby Mode (network communication off)
- Designed to be recycled<sup>4</sup>
- RoHS compliant
- Epson America, Inc. is a SmartWay<sup>SM</sup> Transport Partner<sup>5</sup>



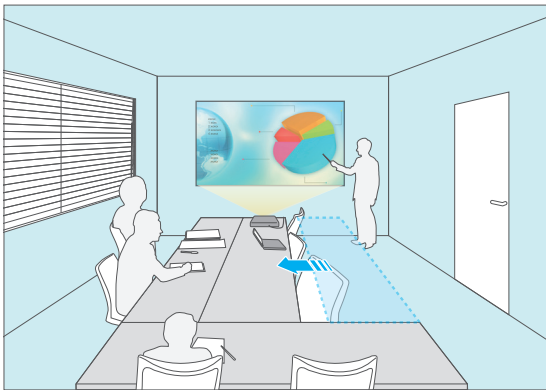


## Flexible setup

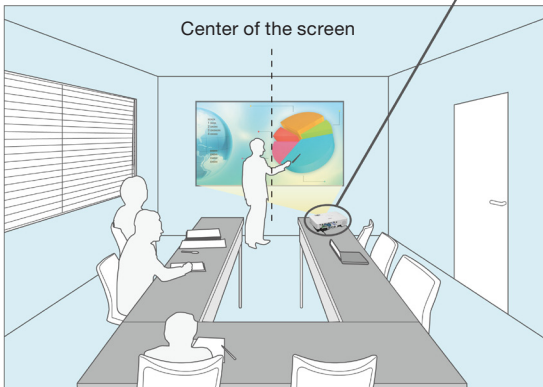
### Easy horizontal and vertical keystone correction

Epson's horizontal and vertical keystone correction means you can project a rectangular image from any angle. Just move the slider bar to make the necessary horizontal adjustments. Your PowerLite 1850W can be off to the side and above or below the screen, while your presentation is front and center.

Without Horizontal Keystone

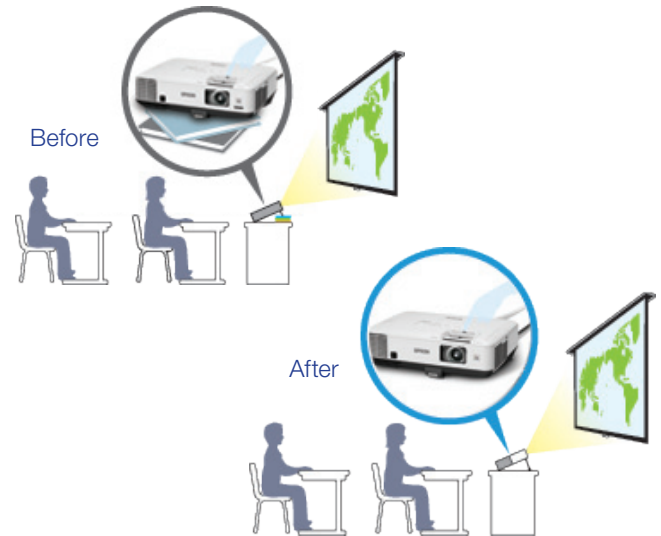


With Horizontal Keystone



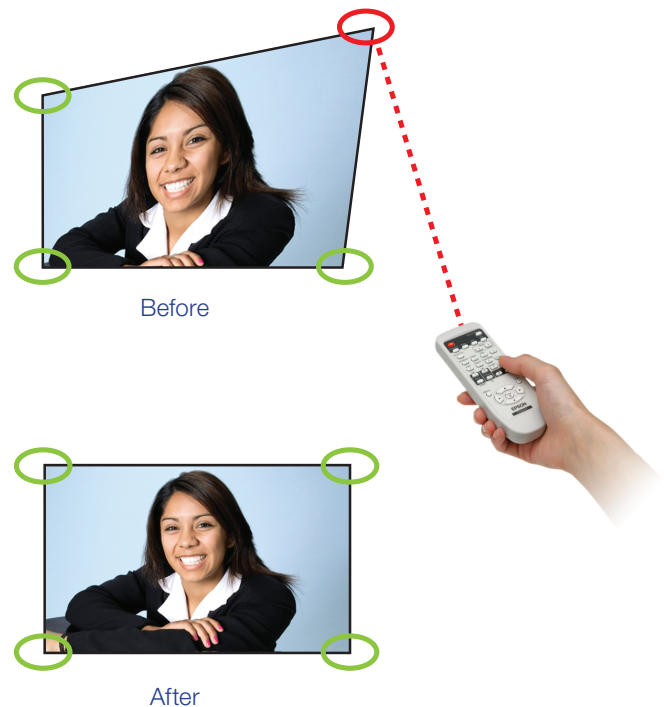
### More visible, larger images

Equipped with a 1.6x optical zoom, the projector enlarges images 40% more than competitive models with a 1.2x optical zoom. Optical lenses maintain the integrity of the image while a higher zoom means the projector can stay close to the screen.



### Quick Corner®

This innovative feature allows you to move any of the four corners of an image independently at setup, using the remote control to adjust each corner for a perfectly rectangular picture.

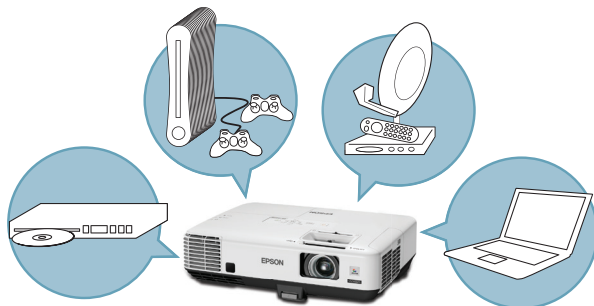


## Leading-edge technology

### HDMI input for high-quality, high-definition video

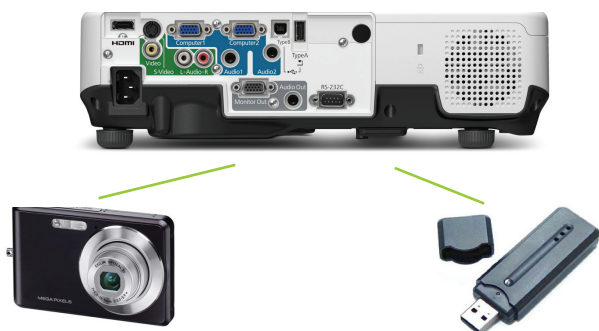
**HDMI™**

- Deliver both audio and brilliant HD video content with just one cable
- Compatible with the latest laptops, Blu-ray® and media players



### PC-free slideshows

- Just plug your USB memory device into the USB port, and you are ready to display whichever slide you choose from the drive
- Compatible with the following file formats: JPG/BMP/GIF/PNG/FSE/SIT
- Create a slideshow using files on the USB drive



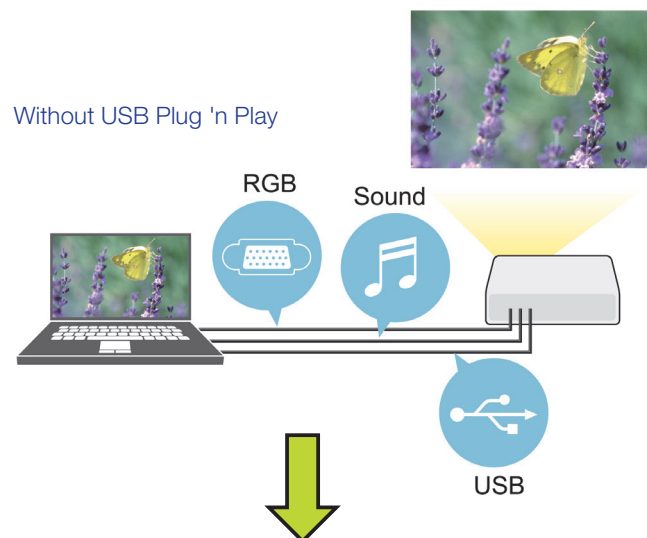
Camera and flash drive sold separately

### USB display – advanced 3-in-1 USB Plug 'n Play

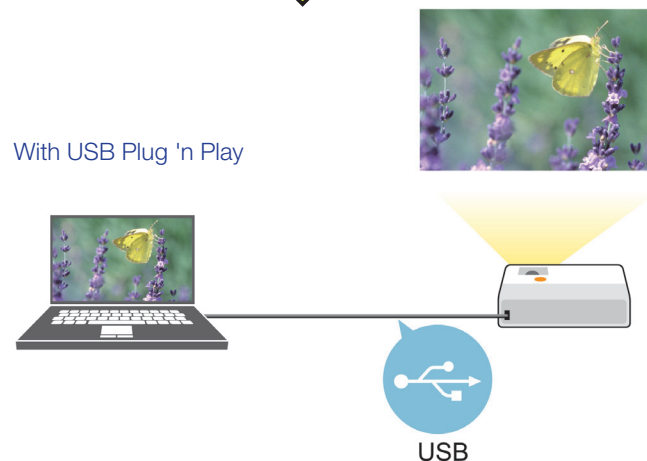


- Three features, all with one connection — display your presentation, transmit audio and use your remote control as a mouse to control your presentation
- No more computer function keys or bulky VGA and audio cables
- Just plug in a standard USB cable and instantly project — compatible with Windows® and Mac®

Without USB Plug 'n Play



With USB Plug 'n Play



### Document camera

Partner your projector directly with Epson's DC-06 document camera and make more effective presentations to enhance the overall teaching experience.



DC-06 sold separately.

### Built-in closed captioning



- Essential for education — helps meet ADA508 requirements for students with hearing impairments
- Helps save money — no need to pay for an additional decoder and its installation
- Effective and easy to use — easily enabled or disabled through the projector remote or menu



### PowerLite 1850W Features

- **Instant Off®** — no cool-down time required, so it's ready to shut down when you are
- **A/V Mute Slide** — control your presentation; it's right at your fingertips
- **Direct Power On/Off** — power the projector on and off with the flip of a wall switch



A/V Mute Slide

### Built-in 10 W speaker

- Engage your students with 10 W of sound — enable students in the room to hear your lessons, without purchasing costly speakers
- Adjust the volume using the projector remote control



## PowerLite® 1850W

### Multimedia Projector

Product Name	Product Code	UPC
PowerLite 1850W	V11H425020	0 10343 88433 5
Genuine Epson Lamp	V13H010L64	0 10343 88384 0
Replacement Air Filter	V13H134A35	0 10343 88859 3

#### Specifications

**Projection System**  
Epson 3LCD, 3-chip technology

**Projection Method**  
Front/rear/ceiling mount

**Driving Method**  
Epson Poly-silicon TFT Active Matrix

**Pixel Number**  
1,024,000 pixel x 3 (1280 x 800)

**Color Light Output<sup>1</sup>**  
3700 lumens

**White Light Output<sup>1</sup>**  
3700 lumens (ISO 21118 standard)

**Aspect Ratio**  
16:10

**Native Resolution**  
1280 x 800 (WXGA)

**Lamp Type**  
275 W UHE E-TORL

**Lamp Life<sup>2</sup>**  
3000 hours (Normal Mode)  
4000 hours (Eco Mode)

**Size (projected distance)**  
29" – 280" 16:10 aspect (0.84 - 8.4m wide or 1.36 - 13" tele)

**Contrast Ratio**  
2500:1

**Color Reproduction**  
16.7 million colors

**Keystone Correction**  
Vertical: ± 30 degrees auto  
Horizontal: ± 30 degrees manual

#### Projection Lens

**Type**  
Manual focus/Manual (optical) zoom

**F-number**  
1.51 – 1.99

**Focal Length**  
18.2mm – 29.2mm

**Zoom Ratio**  
Optical zoom 1.0 – 1.6

**Throw Ratio Range**  
1.38 – 2.24

#### Other

**Display Performance**  
NTSC: 480 line  
PAL: 576 line  
(depends on the observation of the multi-burst pattern)

**Input Signal**  
NTSC/NTSC4.43/PAL/M-PAL/N-PAL/  
PAL60/SECAM

**Interfaces**  
Computer/component video: D-sub 15 pin x 2  
S-video: Mini DIN x 1  
Composite video: RCA x 1  
USB connector: Type-B x 1 (USB display, audio and mouse/keyboard control)  
Serial: RS-232c x 1  
HDMI  
USB Type A (Memory)  
Monitor out  
Audio out  
Audio in x2  
Raw LxR RCA Audio

**Audio Output**  
10W mono speaker

**Audio Signal**  
500 mVrms/47 k-ohm

**Operating Temperature**  
41 ° to 95 °F (5 ° to 35 °C)

**Power Supply Voltage**  
100 – 240 V ± 10%, 50/60 Hz AC

**Power Consumption**  
381 W (Normal Mode)  
309 W (ECO Mode)  
3.5 W Standby (Communication On)  
0.27 W Standby (Communication Off)

**Fan Noise**  
39 dB (Normal Mode)  
35 dB (ECO Mode)

**Security**  
Security cable hole, Kensington® lock provision

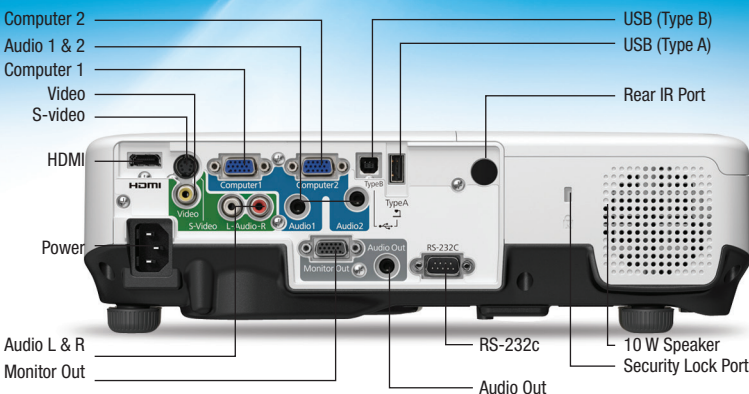
**Effective Scanning Frequency Range**  
**Pixel Clock**  
13.5 MHz – 162 MHz (up to UXGA 60 Hz)

**Horizontal**  
15 kHz – 92 kHz

**Vertical**  
50 Hz – 85 Hz

**USB Plug 'n Play**  
Mac and PC compatible

**Other Connectivity**  
Mac compatible via DVI to VGA adapter (not included)  
VGA to component (ELP KC19)



#### Dimensions (W x D x H)

Including feet: 13.5" x 10.3" x 4.2"  
Excluding feet: 13.5" x 10.3" x 3.6"  
Weight: 7.4 lb

#### Remote Control

**Features**  
Search, comp, video, USB, power, aspect, color mode, volume, e-zoom, A/V mute, freeze, menu, page up and down, help, auto, mouse functions, user, pointer, esc, enter

**Operating Angle**  
Right/left: ± 30 degrees  
Upper/lower: ± 30 degrees

**Operating Distance**  
19 ft (6 m)

#### Support

**The Epson Connection<sup>SM</sup>**  
Pre-sales support (U.S. and Canada):  
800-463-7766  
Internet website: [www.epson.com](http://www.epson.com)

**Service Programs**  
Two-year projector limited warranty, Epson Road Service program, PrivateLine® dedicated toll-free support and 90-day lamp limited warranty

**What's In The Box**  
PowerLite 1850W projector, power cord, computer cable (VGA), USB cable, projector remote control, batteries, user manual CD, projector software CD, Quick Setup Sheet, PrivateLine support card and password protection sticker

#### Accessory Part Numbers

Genuine Epson lamp	V13H010L64
Replacement air filter	V13H134A35
Document imager (ELPDC05)	V12H162020
DC-06 document camera (PC / Mac)	V12H321005
DC-11 document camera	V12H377020
PixiePlus control system	ELPSP10
6' VGA computer cable	F3H982-06
10' VGA computer cable	F3H982-10
25' VGA computer cable	F3H982-25
3' HDMI computer cable	AV22300-03
6' HDMI computer cable	AV22300-06
12' HDMI computer cable	AV22300-12
Universal ceiling mount	ELPMBPJF
Duet 4:3, 16:9 portable screen	ELPSC80
ES3000 ultra portable projector screen	V12H002S3Y
Portable projection screen 50"	ELPSC06
Structural round ceiling plate	ELPMBP03
False ceiling plate kit	ELPMBP02
Adjustable suspended ceiling kit	ELPMBP01
Adjustable extension column (Pipe) 8" -11"	ELPMBC01
Kensington microcover security lock	ELPSL01
BrightLink Solo	V12H415020
BrightLink Solo with RM EasiTeach	V12H415020RM
Soft carrying case (ELPKS64)	V12H001K64

#### Extended Service Agreements

1-year extended exchange	EPPEXPB1
1-year extended fast turn depot	EPPFTPB1
2-year extended fast turn depot	EPPFTPB2

#### Packaging Specifications

**PowerLite 1850W**  
Dimensions 20.6" x 15.4" x 9.1" (W x D x H)  
Weight 14.8 lb

**Genuine Epson Lamp**  
Dimensions 6.1" x 5.4" x 5.5" (W x D x H)  
Weight 0.8 lb  
Master Carton  
Dimensions 28.2" x 12.9" x 6.4" (W x D x H)  
Weight 9.1 lb  
Units Per Master Carton 10

**Replacement Air Filter**  
Dimensions 4.7" x 3.3" x 1.8" (W x D x H)  
Weight 0.1 lb  
Master Carton  
Dimensions 9.9" x 7.1" x 5.3" (W x D x H)  
Weight 1.0 lb  
Units Per Master Carton 10

1 Color and white light output will vary depending on mode selected. White light output measured using ISO 21118 standard.  
2 Lamp life will vary depending upon mode selected, environmental conditions and usage. Lamp brightness decreases over time.  
3 Data source: ProjectorCentral.com, Jan. 2011. Average of 1038 shipping models, for which manufacturers provided lumens and total power data, all resolutions and brightness levels.  
4 See our website for convenient and reasonable recycling options at [www.epson.com/recycle](http://www.epson.com/recycle)  
5 SmartWay is an innovative partnership of the U.S. Environmental Protection Agency that reduces greenhouse gases and other air pollutants and improves fuel efficiency.