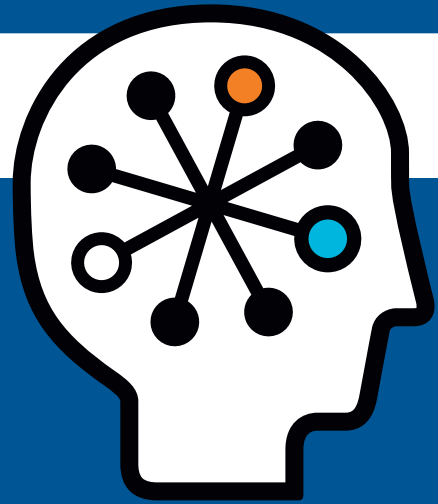




## HP ProLiant DL185 G5 Server

Data sheet



### Can you meet your computing challenges?

When your business depends on timely access to applications and information, you need reliable servers that deliver consistent high performance—at a price that's right for your budget.

What's more, you need flexible systems that make it easy to add hard disk drives, memory capacity and management tools. This flexibility allows you to meet your changing needs without disrupting your business.

These are just a few of the features and benefits of the new HP ProLiant DL185 G5 Server. The DL185 G5 is designed specially to meet the needs of growing businesses that require reliable, flexible computing systems that are easy to manage and affordably priced.

### Move ahead with a server optimized for your business.

The ProLiant DL185 G5 is an affordable 2U, dual processor-capable server that delivers essential performance features for 32-bit and 64-bit applications. This next-generation rack-optimized server is loaded with innovations and features that set it apart from comparable offerings.

The entire server is new, with an ultra-dense 2U chassis that enables increased usage of valuable server rack and data center space. For improved performance and power efficiency, the DL185 G5 features new quad-core or dual-core AMD Opteron™ processors. In addition, the DL185 G5 boosts application performance with up to 64 GB of memory.

You can customize the DL185 G5 with the options you need to fit your unique performance and dependability requirements—including processors, memory, hard drives and HP Care Pack services.

With its flexible features, the DL185 G5 delivers rack-server efficiency with the economics of a tower platform.

# The new ProLiant DL185 Generation 5 (G5) Server is a 2U, dual-processor server designed for quality, performance and flexible deployments. This server is ideal for companies in emerging markets, small and medium businesses, corporate scale out deployments and large scale service providers.

With its robust features and functionality, the DL185 G5 Server is ideal for growing businesses.

## Key features and benefits

### Ideal performance

The DL185 G5 Server boosts performance with:

- Up to two AMD Opteron 2200 or 2300 series processors with Direct Connect Architecture and the processing power to run multiple tasks and applications simultaneously
- Up to 64 GB of 667 MHz DDR2 memory and up to 32 GB of 800 MHz DDR2 to provide increased bandwidth for high uptime and memory Performance
- Standard HP Smart Array E200 controller on eight-drive models and standard HP Smart Array P400 controller on 12-drive models, providing advanced storage functionality for increased server uptime, fault prevention and fault recovery
- Three standard PCI Express expansion slots (one low profile x4, two full length/full height x8) providing room for expansion
- Dual-port gigabit network interface card (NIC) offers ideal network throughput

### Simplified system management

The DL185 G5 Server simplifies system management by:

- Giving you the control you need to respond quickly to server issues, wherever they occur
- Delivering essential, entry-level remote management at an affordable price
- Providing both browser and command-line interface access
- Giving you flexible network connectivity choices, including a shared network port and/or a dedicated network port

### Comprehensive support

To help you focus on your business, HP provides wide-ranging support services to help you keep your server—and your business—running at peak performance.

You can look to HP for:

- A full range of startup, installation, extended warranty, network planning, software updates, system health checks, recovery services and IT outsourcing, available upon request
- 24x365 business-critical support in 160 countries
- Access to 69,000 service professionals globally to assist you with setup and installation and to provide post-sales support when you need it from a single point of contact
- 70 worldwide help desks for around-the-clock support

### Flexible design

The flexible design of the DL185 G5 allows you to order your server customized with options that are right for your specific performance requirements. Along with a choice of processors and memory options, the DL185 G5 supports:

- Redundant, pluggable power supplies (non-hot plug)
- Eight, 12 or 14 hot plug 3.5-inch SAS or SATA hard drives
- HP Smart Array technology
- Rear DVD and two rear hot plug hard drives in 12-drive models

## HP ProLiant DL185 G5 Server



### Processor and memory

<b>Number of processors</b>	1-2
<b>Maximum number of cores</b>	8
<b>Processor type</b>	AMD Opteron 2000 Series
<b>Processors supported</b>	<p>Quad-Core AMD Opteron processor:</p> <p>Model 2384: 2.7 GHz, 75 Watt</p> <p>Model 2380: 2.5 GHz, 75 Watt</p> <p>Model 2376: 2.3 GHz, 75 Watt</p> <p>Model 2356: 2.3 GHz, 75 Watt</p> <p>Model 2354: 2.2 GHz, 75 Watt</p> <p>Model 2352: 2.1 GHz, 75 Watt</p> <p>Model 2346HE: 1.8 GHz, 55 Watt</p> <p>Dual-Core AMD Opteron processors:</p> <p>Model 2222: 3.0 GHz, 75 Watt</p> <p>Model 2218: 2.6 GHz, 75 Watt</p> <p>Model 2212: 2.0 GHz, 75 Watt</p>
<b>Processor core</b>	Dual and quad
<b>Cache</b>	<p>4 x 512 KB Level 2 Cache and 6 MB shared Level 3 Cache (Quad-core)</p> <p>4 x 512 KB Level 2 Cache and 2 MB shared Level 3 Cache (Quad-core)</p> <p>2 x 1 MB Level 2 Cache (Dual-core)</p>
<b>Maximum processor speed</b>	3.0 GHz (Dual-core)
<b>Memory type</b>	PC2-6400 DDR2, PC2-5300 DDR2
<b>Standard memory</b>	1, 2 or 4 GB, depending on model
<b>Maximum memory</b>	64 GB PC2-5300 DDR2

### Storage

<b>Storage type</b>	Hot plug 3.5-inch SAS Hot plug 3.5-inch SATA
<b>Drives supported</b>	Up to 14: Hot plug LFF SAS 15K rpm 450 GB/300 GB/147 GB/72 GB Hot plug LFF SATA 7.2K rpm 1 TB/750 GB/500 GB/250 GB/160 GB
<b>Maximum Internal Storage</b>	10.5 TB
<b>Maximum internal drives</b>	14
<b>Removable media bays</b>	1
<b>Expansion slots</b>	3 total, 2 available
<b>Storage controller</b>	HP Smart Array E200 or HP Smart Array P400 in PCI slot

### Deployment

<b>Form factor</b>	Rack
<b>Rack height</b>	2U
<b>Networking</b>	Dual Integrated Broadcom 5704
<b>Remote management</b>	Lights-Out 100i Remote Management Card
<b>Redundant power supply</b>	Optional
<b>Redundant fans</b>	Not available
<b>Warranty (parts/labor/onsite)</b>	1-year/1-year/1-year

For detailed descriptions of all models of the ProLiant DL185 G5 and an extensive list of supported options from HP, see the DL185 G5 QuickSpecs document, available through [http://h18000.www1.hp.com/products/quickspecs/12864\\_div/12864\\_div.html](http://h18000.www1.hp.com/products/quickspecs/12864_div/12864_div.html).

## HP Financial Services

HP Financial Services provides innovative financing and financial asset management programs to help you cost-effectively acquire, manage and ultimately retire your HP solutions. For more information on these services, contact your local HP representative, or visit [www.hp.com/go/hpfinancialservices](http://www.hp.com/go/hpfinancialservices).

## For more information

Part of the HP ProLiant 100 series servers—that have sold more than one million servers to date—the DL185 provides solid reliability and performance for business applications.

For more information about the HP ProLiant DL185 Server, contact your local HP representative or visit [www.hp.com/servers/proliantdl185](http://www.hp.com/servers/proliantdl185).

## HP Services

The challenge of virtually every IT organization is similar: to develop and maintain an agile, efficient infrastructure that delivers the service levels your business needs—while staying within your budget. HP Services helps you get the most from your ProLiant investment with support offerings designed to give you the choice to address your business needs, service-level commitments and budgets. Whether you purchase an HP recommended or enhanced service for your ProLiant server, you can map your hardware choice to the precise level of support you need.

We deliver total care for your servers resulting in comprehensive support to help design, deploy, manage and support your IT environment and business processes. Our 69,000 skilled professionals and network of Authorized Channel Partners deliver global capabilities across the server lifecycle, including consulting, integration, outsourcing and support.

Cost-effectively upgrade or extend your standard warranty with easy-to-buy, easy-to-use support packages that reduce downtime risks with support levels ranging from a basic service recommendation to an enhanced mission-critical service. These HP Care Pack services are available for purchase with your ProLiant DL185 series servers.

### Recommended Care Pack Service offerings

- Three-year, next business day onsite 9-hour x 5-day coverage, hardware support
- Hardware installation

### Enhanced Care Pack Service offerings

- Three-year same business day onsite 13-hour x 5-day coverage, hardware support
- Hardware installation plus operating system installation and startup

### Care Pack Service benefits

- Gain total control and maximum flexibility—resulting in tangible savings
- Improve server availability with single-source support
- Reduce the complexity of services and support resulting in productivity gains
- Reduce deployment and manage ProLiant solutions smoothly and efficiently
- Increase uptime and performance of your servers and solve applications problems quickly
- Detect, diagnose and repair problems to quickly save time, money and resources

For more information, visit [www.hp.com/services/proliantservices](http://www.hp.com/services/proliantservices) or [www.hp.com/go/proliant/carepack](http://www.hp.com/go/proliant/carepack).

© Copyright 2007–2008 Hewlett-Packard Development Company, L.P. The information contained herein is subject to change without notice. The only warranties for HP products and services are set forth in the express warranty statements accompanying such products and services. Nothing herein should be construed as constituting an additional warranty. HP shall not be liable for technical or editorial errors or omissions contained herein.

AMD and AMD Opteron are trademarks of Advanced Micro Devices, Inc.

For more information, visit [www.hp.com/servers/proliantdl185](http://www.hp.com/servers/proliantdl185)

4AA1-5497ENW Rev. 1, October 2008

Technology for better business outcomes

