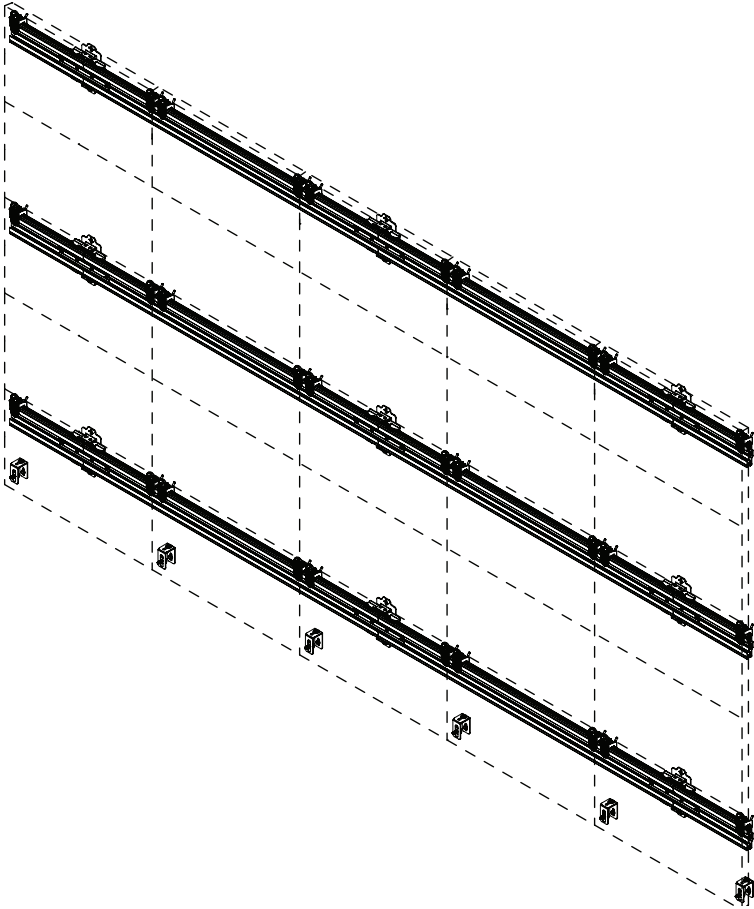




SEAMLESS Connect Universal dvLED Mounting System

*Actual configuration may vary



Scan to obtain dvLED Configurator Drawing:



ENG USA



EMEA

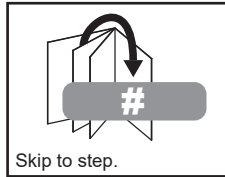
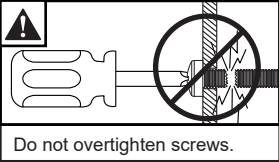
Installation video for
reference only.
Read and follow
instruction manual
for full installation.



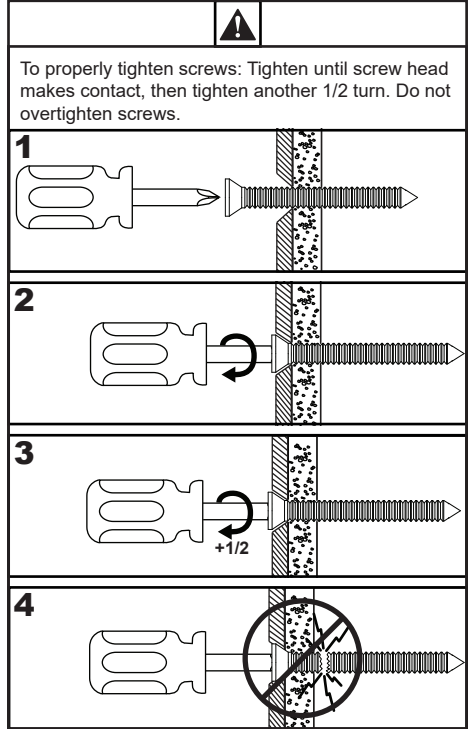
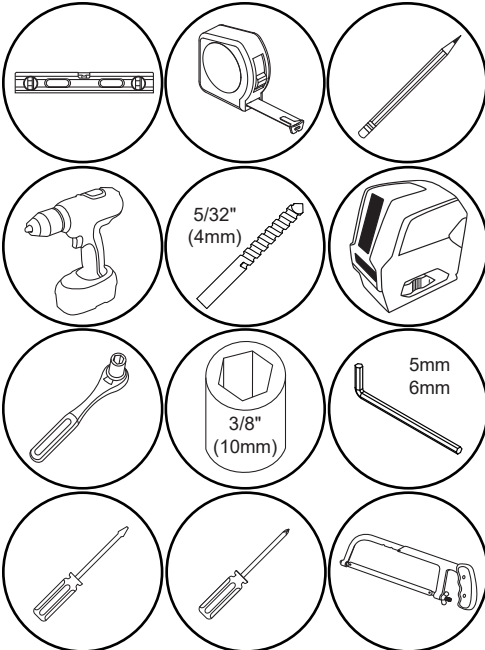
⚠ WARNING

This product is designed to be installed on plywood walls. Hardware is included for plywood installation. This product is designed to be installed on flat, unobstructed, vertical walls. Do not install on curved or angled walls. Before installing make sure the supporting surface will support the combined load of the equipment and hardware. Screws must be tightly secured. Do not overtighten screws or damage can occur and product may fail. Never exceed the Maximum Load Capacity. Always use an assistant or mechanical lifting equipment to safely lift and position equipment. This product is intended for indoor use only. Use of this product outdoors could lead to product failure or personal injury. Be careful not to pinch fingers when operating the mount. For support please call customer care at 1-800-865-2112 or visit www.peerless-av.com.

Symbols



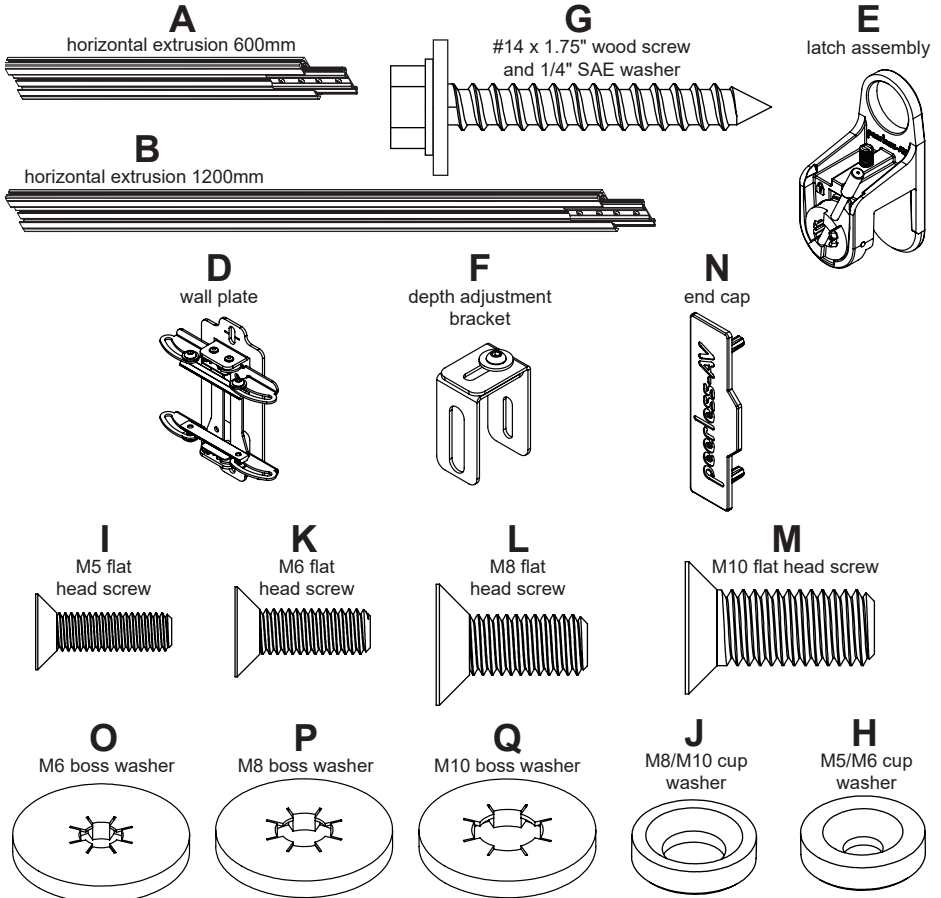
Tools Needed for Assembly.



Parts (Note, your configuration may not include all parts shown below).

| Parts List | | LEDUNV6 | | LEDUNV12 | |
|---|------|----------|------|----------|--|
| Description | Qty. | Part # | Qty. | Part # | |
| A horizontal extrusion 600mm | 1 | 10019956 | - | - | |
| B horizontal extrusion 1200mm | - | - | 1 | 10019953 | |
| C - | - | - | - | - | |
| D wall plate | 1 | 10019183 | 1 | 10019183 | |
| E latch assembly | 2 | 10020469 | 4 | 10020469 | |
| F depth adjustment bracket | 3 | 10019254 | 6 | 10019254 | |
| G #14 x 1.75" wood screw and 1/4" SAE washer | 5 | 10017591 | 8 | 10017591 | |
| H M5/M6 cup washer | 5 | 10019285 | 10 | 10019285 | |
| I M5 flat head screw | 5 | 10019505 | 10 | 10019505 | |
| J M8/M10 cup washer | 5 | 10019284 | 10 | 10019284 | |
| K M6 flat head screw | 5 | 10019506 | 10 | 10019506 | |
| L M8 flat head screw | 5 | 10019507 | 10 | 10019507 | |
| M M10 flat head screw | 5 | 10019508 | 10 | 10019508 | |
| N end cap | 2 | 10019843 | 2 | 10019843 | |
| O M6 boss washer | 2 | 10020892 | 4 | 10020892 | |
| P M8 boss washer | 2 | 10020893 | 4 | 10020893 | |
| Q M10 boss washer | 2 | 10020894 | 4 | 10020894 | |

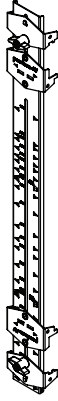
For LEDUNVSS, LEDUNVSP, LEDUNVMP, and LEDUNVLP:
Refer to parts list specific to your model.



Parts List

| Description | Qty. |
|-----------------------|------|
| AA spacer | 2 |
| BB 3mm allen wrench | 1 |
| CC 4mm allen wrench | 1 |
| DD spacer extension | 2 |
| EE shim plate | 2 |
| FF laser target | 2 |
| GG M4 flat head screw | 12 |

AA
spacer



DD
spacer extension



BB

3mm allen wrench



CC

4mm allen wrench



GG

M4 flat head screw



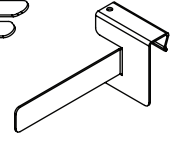
EE

shim plate



FF

laser target



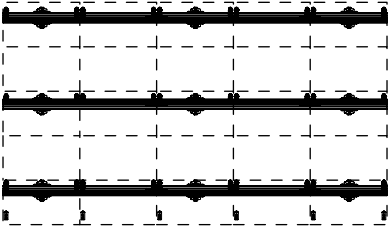
LEDUNVSPACER3 Kit sold separately.

ENG This page intentionally left blank.

1

Use the display's overall dimensions to identify the display size category. Based on the display size category, use the table below to check whether the mount's extrusions will skip rows and whether the wall plates will skip columns.

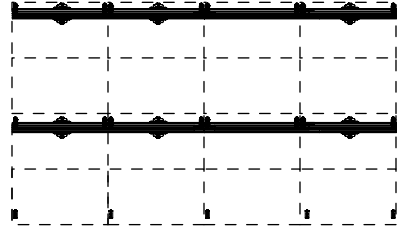
| Display Size | Display Max. Width | Display Max. Height | Skip Columns? | Skip Rows? |
|--------------|--------------------|---------------------|---------------|------------|
| S | 610mm | 343mm | YES | YES |
| M | 960mm | 540mm | NO | YES |
| L | 1220mm | 682mm | NO | NO |
| SS | 500mm | 500mm | YES | YES |
| SP | 343mm | 610mm | YES | YES |
| MP | 540mm | 1000mm | YES | NO |
| LP | 682mm | 1220mm | NO | NO |



Odd number of rows OR even number of rows with NO skipping rows.



1a-1



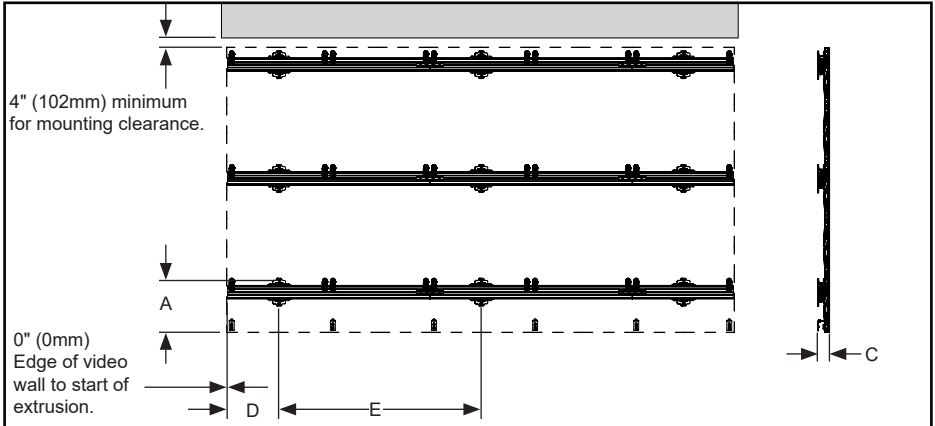
Even number of rows AND skipping rows.



1b-1

1a-1

Dimensions that will locate mount on the wall. Reference "Compatible Display Table" during the following steps.



"A" = Bottom of video wall to notch of first wall plate.

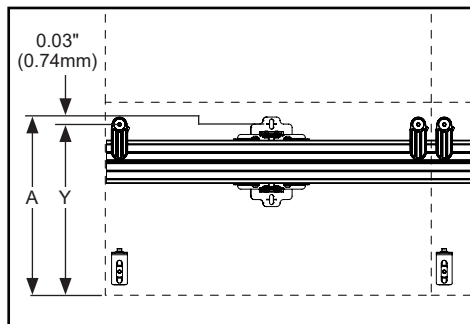
"C" = System depth range.

"D" = 1/2 of Display Width, Side of video wall to the center of first wall plate.

"E" = Spacing of wall plates. If NO to skip columns, display width [x1]. If YES to skip columns, display width [x2].

1a-2

If display model is not listed on "Compatible Display Table", use formula provided to calculate the dimension ("A") used to locate mount on the wall. Y = bottom of display tile to top pair of mounting holes on back of display.



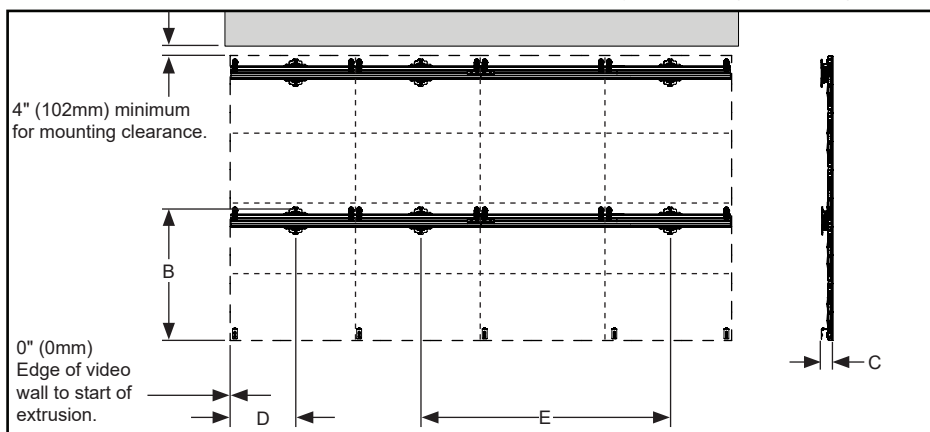
$$A = Y + 0.03" (0.74mm)$$

For video walls with an odd number of rows OR even number of rows with NO skipping rows, start with extrusion at bottom row.



1b-1

Dimensions that will locate mount on the wall. Reference "Compatible Display Table" during the following steps.



"B" = Bottom of video wall to notch of first wall plate.

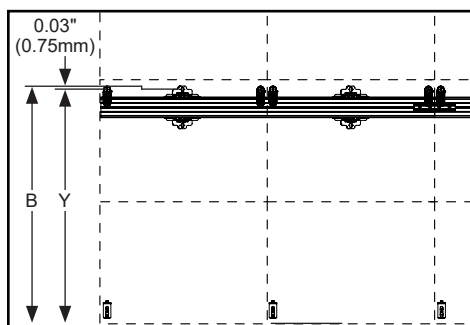
"C" = System depth range.

"D" = 1/2 of Display Width, Side of video wall to the center of first wall plate.

"E" = Spacing of wall plates. If NO to skip columns, display width [x1]. If YES to skip columns, display width [x2].

1b-2

If display model is not listed on "Compatible Display Table", use formula provided to calculate the dimension ("B") used to locate mount on the wall. Y = bottom of display tile to top pair of mounting holes on back of display.



$$B = Y + 0.03" (0.75mm)$$

For even number of rows that also skip rows, start with extrusion at second row of displays from the bottom.

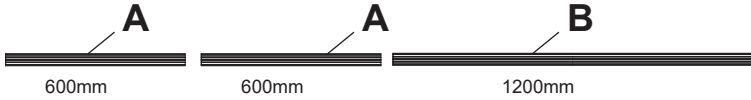
Compatible Display Table

| Compatible Display | Dimension A | Dimension B | Dimension C |
|------------------------------------|----------------|----------------|-------------------------|
| Absen A27 Pro/Plus | 11.2" (285mm) | 24.7" (628mm) | 3.6" - 5.2" (92-132mm) |
| Absen A27-V3 | 11.2" (285mm) | 24.7" (628mm) | 3.4" - 5" (88-128mm) |
| Absen CL | 11.2" (285mm) | 24.7" (628mm) | 4" - 5.5" (100-140mm) |
| Absen CL V2 | 11.2" (285mm) | 24.7" (628mm) | 3.7" - 5.2" (93-133mm) |
| Absen K Plus | 25.4" (645mm) | 54.9" (1395mm) | 4"-5.6" (103-143mm) |
| Absen KL II | 6.1" (155mm) | 13.2" (335mm) | 4.1"-5.7" (105-145mm) |
| Absen KLCOB V2 | 12.7" (323mm) | 26" (660mm) | 3.2" - 4.8" (82-122mm) |
| Absen NX 240x1080 | 41.8" (1062mm) | 84.3" (2142mm) | 3.4"-5" (87-127mm) |
| Absen NX 240x540 | 20.6" (522mm) | 41.8" (1062mm) | 3.4"-5" (87-127mm) |
| AOTO CV | 12.4" (315mm) | 25.7" (667mm) | 3.2" - 4.7" (80-120mm) |
| AWOL Vision AWALL | 12.1" (308mm) | 25.4" (645mm) | 3.1" - 4.6" (78-118mm) |
| Barco NT | 12.6" (319mm) | 25.9" (657mm) | 3.1" - 4.7" (79-119mm) |
| Barco XT | 12.7" (323mm) | 26.2" (664mm) | 4.4" - 5.9" (111-151mm) |
| Blue Square BSX | 12.6" (321mm) | 25.9" (673mm) | 3" - 4.5" (75-115mm) |
| BOE BYH-B | 12.4" (316mm) | 25.7" (653mm) | 3.5" - 5.1" (90-130mm) |
| Christie CSII | 12.1" (308mm) | 25.4" (645mm) | 3" - 4.6" (75-117mm) |
| Christie CSIII | 12.1" (308mm) | 25.4" (645mm) | 2.8" - 4.4" (72-112mm) |
| Dahua CH II | 12.5" (318mm) | 25.8" (655mm) | 3.3" - 4.8" (83-123mm) |
| DVS Dioplex HD | 38.4" (975mm) | 77.8" (1975mm) | 4.9"-6.5" (125-165mm) |
| GCL GTV | 11.1" (283mm) | 24.4" (620mm) | 2.9" - 4.4" (73-113mm) |
| HIKVISION CW-2F | 12.5" (317mm) | 25.8" (655mm) | 2.7" - 4.3" (69-109mm) |
| HIKVISION CWF / CWF III / CWFH III | 12.5" (317mm) | 25.8" (655mm) | 3.5" - 5.1" (89-129mm) |
| HIKVISION ZWDH | 12.6" (321mm) | 25.9" (659mm) | 3.4" - 4.9" (86-126mm) |
| Hisense HIK | 20.5" (520mm) | 41.7" (1060mm) | 3.8" - 5.4" (97-137mm) |
| Hisense HIP | 12.5" (317mm) | 25.8" (655mm) | 3.1" - 4.7" (79-119mm) |
| Hisense XIH | 12.1" (307mm) | 25.4" (645mm) | 3.2" - 4.8" (82-122mm) |
| i5 LED II | 12.6" (321mm) | 25.9" (659mm) | 3.1" - 4.7" (79-119mm) |
| Imaginis 1.x-Mod | 12.2" (310mm) | 25.5" (648mm) | 3.9" - 5.4" (98-138mm) |
| InfiLED EZ Series | 18.5" (470mm) | 38.2" (970mm) | 4.7" - 6.2" (119-159mm) |
| InfiLED WK / WP / WT | 12" (305mm) | 25.3" (642mm) | 2.8" - 4.4" (72-112mm) |
| Jupiter ZAVUS XP-P0.7 | 9.1" (230mm) | 19.7" (500mm) | 2.7" - 4.3" (68-108mm) |
| Jupiter ZAVUS XP-P0.9/1.2 | 11.3" (288mm) | 24.6" (625mm) | 2.7" - 4.3" (69-109mm) |
| Just Video 05-IND-A01 | 12" (306mm) | 25.3" (643mm) | 3.2" - 4.8" (82-122mm) |
| Lampro BNX II | 38.2" (970mm) | 77.6" (1970mm) | 3.1" - 4.7" (80-120mm) |
| Lang Legend | 12.6" (321mm) | 25.9" (659mm) | 3.1" - 4.7" (79-119mm) |
| LED Studio SOLARIS | 12.5" (318mm) | 25.8" (655mm) | 3.2" - 4.8" (82-122mm) |
| Ledman XS | 18.5" (470mm) | 38.2" (970mm) | 4" - 5.5" (101-141mm) |
| Leyard CDI | 18.5" (470mm) | 38.2" (970mm) | 3.2" - 4.8" (83-123mm) |
| Leyard VDS | 12.5" (318mm) | 25.8" (655mm) | 3.3" - 4.9" (84-124mm) |
| LG LSBB (GD) | 12.7" (324mm) | 26" (661mm) | 3.8" - 5.3" (96-136mm) |
| LG LSBC | 38.4" (975mm) | 77.8" (1975mm) | 4.3" - 5.8" (108-148mm) |
| LG LSCA (1000 Tall) GK | 38.3" (972mm) | 77.6" (1972mm) | 4.1" - 5.7" (105-145mm) |
| LG LSCA (1000 Tall) GN | 38.3" (972mm) | 77.6" (1972mm) | 4.3" - 5.8" (108-148mm) |
| LG LSCA (500 Tall) GK2 | 18.6" (472mm) | 38.3" (972mm) | 4.1" - 5.7" (105-145mm) |
| LG LSCB | 12" (305mm) | 25.3" (642mm) | 2.9" - 4.4" (73-113mm) |
| LG LSCB Portrait | 22.7" (576mm) | 46.3" (1176mm) | 2.9" - 4.4" (73-113mm) |
| LG LSGA-GK | 38" (965mm) | 77.4" (1965mm) | 5.3" - 6.8" (134-174mm) |
| LG LWBC (1000 Tall) GD | 38.4" (975mm) | 77.8" (1975mm) | 4.2" - 5.8" (107-147mm) |
| LG LWBC (750 Tall) DD | 28.5" (725mm) | 58.1" (1475mm) | 4.3" - 5.9" (109-149mm) |
| LG LSBE | 12.5" (318mm) | 25.8" (656mm) | 4.4" - 6" (112-152mm) |
| LG LSCC-CZ | 12" (305mm) | 25.3" (642mm) | 3" - 4.6" (76-116mm) |
| LG LSCC-GZ | 12" (305mm) | 25.3" (642mm) | 3" - 4.6" (76-116mm) |
| Linsn N169 | 12.7" (322mm) | 26" (660mm) | 4.7" - 6.3" (120-160mm) |
| Macropix Imaginis J | 12.3" (313mm) | 25.6" (650mm) | 4" - 5.6" (101-141mm) |
| Macropix Imaginis JC | 12.5" (318mm) | 25.8" (655mm) | 3.2" - 4.8" (82-122mm) |
| Macropix Mobilis F2.6XRMBV-MOD | 28.6" (725mm) | 58.1" (1475mm) | 4" - 5.6" (101-141mm) |
| Macropix Mobilis FT | 18.7" (475mm) | 38.4" (975mm) | 2.9" - 4.5" (72-115mm) |
| MAXHUB M27 | 12.5" (318mm) | 26" (661mm) | 2.9" - 4.5" (72-115mm) |

| Compatible Display | Dimension A | Dimension B | Dimension C |
|-------------------------------|---------------|----------------|-------------------------|
| Panavisual CS261 | 18.5" (470mm) | 38.2" (970mm) | 4.1" - 5.6" (105-143mm) |
| Panavisual CU181 | 17.7" (450mm) | 36.6" (930mm) | 3.7" - 5.3" (94-134mm) |
| Pensar Immersive | 11.3" (288mm) | 24.6" (625mm) | 3.5" - 5.1" (89-129mm) |
| Philips 27BDL6000 | 12.7" (322mm) | 26.1" (664mm) | 4" - 5.6" (102-142mm) |
| Philips 27BDL9000 | 12.7" (322mm) | 26.1" (664mm) | 3.8" - 5.4" (97-137mm) |
| Philips 27HDL51XXIP | 12.5" (319mm) | 25.8" (656mm) | 3.1" - 4.3" (78-117mm) |
| Philips 28HDL5000 | 18.8" (478mm) | 38.5" (978mm) | 3.3" - 4.9" (85-125mm) |
| Philips 44HDL5000 | 38.5" (978mm) | 77.9" (1978mm) | 3.4" - 5" (87-127mm) |
| Planar DLE | 12.7" (324mm) | 26" (661mm) | 3.3" - 4.9" (83-123mm) |
| Planar DLP-27 | 12.5" (320mm) | 26" (660mm) | 4.3" - 5.5" (109-148mm) |
| Planar DLP-36 | 26" (660mm) | 52.8" (1341mm) | 4.3" - 5.8" (109-148mm) |
| Planar MGP | 12.7" (322mm) | 26" (660mm) | 3.8" - 5.4" (97-137mm) |
| Planar TVF | 12.6" (320mm) | 26" (660mm) | 3.9" - 5.9" (98-139mm) |
| Primeview 220 Fusion Max | 12.5" (319mm) | 26" (660mm) | 2.9" - 4.5" (74-114mm) |
| QST Quanta | 12" (305mm) | 25.3" (642mm) | 3.1" - 4.7" (80-120mm) |
| Samsung IEC / IEC-L | 12.3" (313mm) | 25.6" (650mm) | 3.2" - 4.8" (81-121mm) |
| SBC CRYSTAL | 12.7" (322mm) | 26" (660mm) | 3.1" - 4.7" (80-120mm) |
| Sharp/NEC E Series | 12.5" (319mm) | 25.8" (656mm) | 2.7" - 4.3" (69-109mm) |
| Sharp/NEC FAFE | 12.5" (319mm) | 26" (660mm) | 3.6" - 5.2" (92-132mm) |
| Sharp/NEC Q | 18.7" (474mm) | 38.3" (974mm) | 4.8" - 6.3" (121-161mm) |
| Sharp/NEC Qe2 | 18.7" (474mm) | 38.3" (974mm) | 4.4" - 6" (113-153mm) |
| Sharp/NEC Qi2 | 18.7" (474mm) | 38.3" (974mm) | 1.7" - 3.3" (43-83mm) |
| SNA VST | 16.5" (420mm) | 34.3" (870mm) | 3.5" - 5.1" (89-129mm) |
| SNA VTI | 17" (433mm) | 34.7" (883mm) | 4.3" - 5.8" (108-148mm) |
| Sony BH/CH (Cancun) | 11.2" (285mm) | 24.7" (628mm) | 4.4" - 6" (112-152mm) |
| Sony Crystal B&C | 12.5" (319mm) | 25.9" (659mm) | 3.5" - 5.1" (89-129mm) |
| Sony Verona | 19.2" (488mm) | 38.9" (988mm) | 5.2" - 6.8" (133-173mm) |
| Stratech ST150LI-PRO | 25.8" (655mm) | 52.4" (1330mm) | 3.5" - 4.9" (88-124mm) |
| Unilumin UHWII | 12.7" (322mm) | 26.2" (666mm) | 4.3" - 5.9" (110-150mm) |
| Unilumin UHWIII | 12.6" (320mm) | 25.9" (657mm) | 3.1" - 4.6" (78-118mm) |
| Unilumin ULM (Umate) | 38.2" (970mm) | 77.6" (1970mm) | 3.5" - 5.1" (89-129mm) |
| Unilumin Umini | 12.7" (322mm) | 26" (660mm) | 4.5" - 6.1" (114-154mm) |
| Unilumin Umini W | 12.5" (319mm) | 25.8" (655mm) | 2.9" - 4.5" (73-113mm) |
| Unilumin UMINI III (Pro) | 12.5" (319mm) | 25.8" (655mm) | 3.2" - 4.7" (80-120mm) |
| Unilumin Upanel S | 12.7" (322mm) | 26.2" (666mm) | 4.4" - 5.9" (111-151mm) |
| Unilumin Upanel (S)II | 12.7" (322mm) | 26.2" (666mm) | 4.3" - 5.8" (109-148mm) |
| Unilumin ULWIII | 12.5" (319mm) | 25.8" (655mm) | 3.4" - 5" (88-128mm) |
| Unilumin Uslim II (500x1000) | 38.6" (980mm) | 78" (1980mm) | 3.2" - 4.8" (82-122mm) |
| Unilumin Uslim II (500x250) | 9.1" (230mm) | 18.9" (480mm) | 3.2" - 4.8" (82-122mm) |
| Unilumin Uslim II (500x500) | 18.9" (480mm) | 38.6" (980mm) | 3.2" - 4.8" (82-122mm) |
| Unilumin Uslim III (500x1000) | 38.2" (970mm) | 77.6" (1970mm) | 3.3" - 4.8" (83-122mm) |
| Unilumin Uslim III (250x750) | 28.3" (720mm) | 57.9" (1470mm) | 3.3" - 4.8" (83-122mm) |
| Unilumin Uslim III (250x500) | 18.5" (470mm) | 38.2" (970mm) | 3.3" - 4.8" (83-122mm) |
| Unilumin Uslim III (500x500) | 18.5" (470mm) | 38.2" (970mm) | 3.3" - 4.8" (83-122mm) |
| Uniview UHD | 9.1" (230mm) | 19.7" (500mm) | 3.2" - 4.8" (80-122mm) |
| Vanguard Axion 300x337.5 | 12.5" (319mm) | 25.8" (655mm) | 3.8" - 5.4" (97-137mm) |
| Vanguard Axion 600x337.5 | 12.5" (319mm) | 25.8" (655mm) | 3.8" - 5.4" (96-137mm) |
| Vanguard Invictus 600x337.5 | 11.3" (288mm) | 24.6" (625mm) | 2.7" - 4.3" (69-109mm) |
| Vanguard Zirconium | 9.3" (235mm) | 19.1" (485mm) | 3.3" - 4.9" (85-125mm) |
| Vantage VI 512x288 | 10.7" (272mm) | 22" (560mm) | 3.3" - 4.9" (85-125mm) |
| WORTH UHD 600x337.5 | 12.5" (319mm) | 25.8" (655mm) | 3.2" - 4.8" (80-122mm) |
| Yaham YH-T | 12" (309mm) | 25.3" (643mm) | 2.7" - 4.3" (69-109mm) |

2-1

If 600mm extrusions are included, arrange extrusions as shown when building assembly (front view).



If 600mm extrusions are not included with your model:



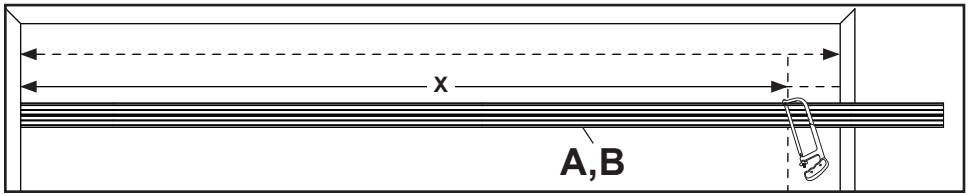
2-2

For display widths measuring 600mm exactly, no cutting necessary.

For display widths of 601 - 610mm, set the expansion gap between extrusions up to 20mm (see step 2-4 and 6-3).

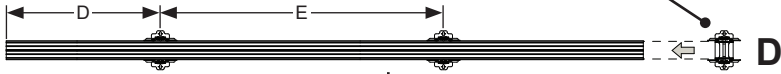
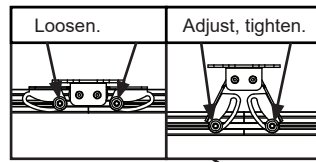
For other display widths, determine the required extrusion length with the following extrusion cut to length formula:

$$\text{Video Wall Width} - 0.25" (6\text{mm}) = \text{Extrusion Length}$$



2-3

Slide wall plates onto extrusions and tighten with the wall plate fully extended. "E" = Refer to step 1 (sequence) for wall plate spacing.

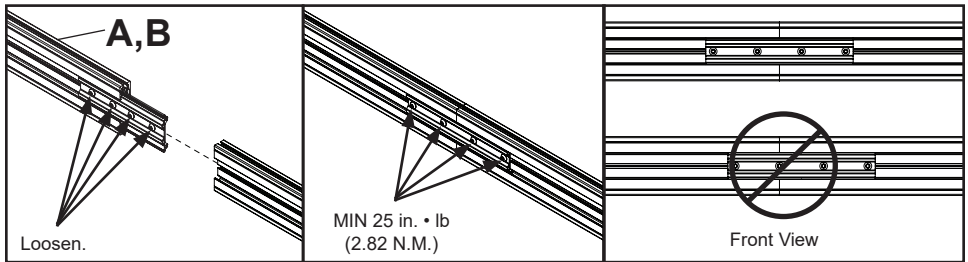


If skipping columns in an odd number of columns video wall, place one wall plate behind column one and skip every other column.

If skipping columns in an even number of columns video wall, place one wall plate behind display columns one and two, then skip every other column.

2-4

Connect two horizontal extrusions using connector plate.

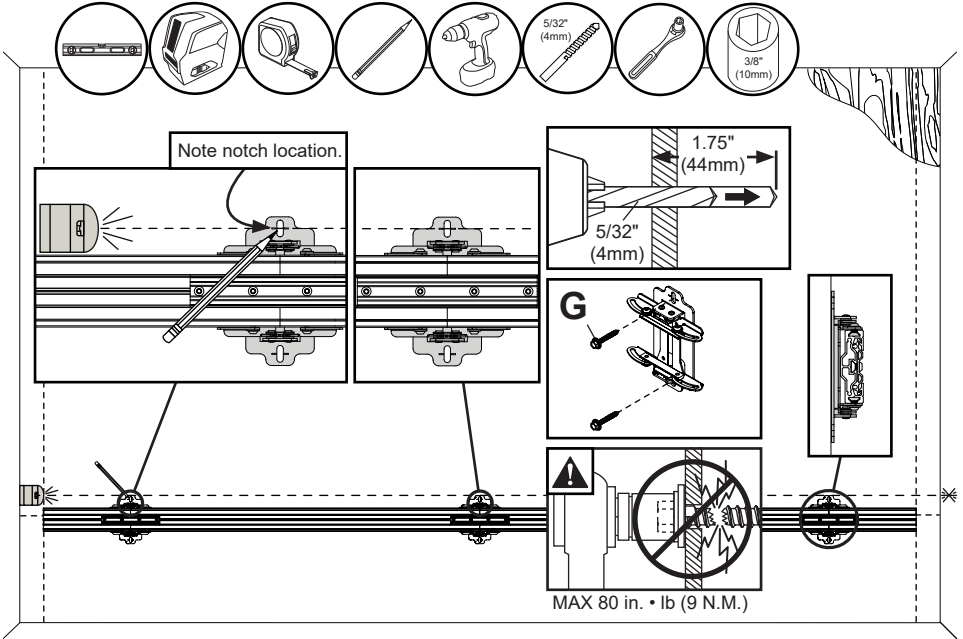


⚠ WARNING

When installing Peerless wall mounts on a wood stud wall covered with plywood, verify that the wood studs are a minimum of 2" x 4" nominal size and plywood is a minimum Grade BC, 1/2" (13mm) thick. Plywood may be covered by gypsum board (drywall) up to 5/8" thick.

3

Install the bottom row, first extrusion assembly, on the laser line per table (step 1), dimension "A". Install additional bottom row extrusions one at a time using connector plates to join extrusions (step 2). Drill mounting holes and install screws and washers with notch of wall plates on the laser line.



4-1

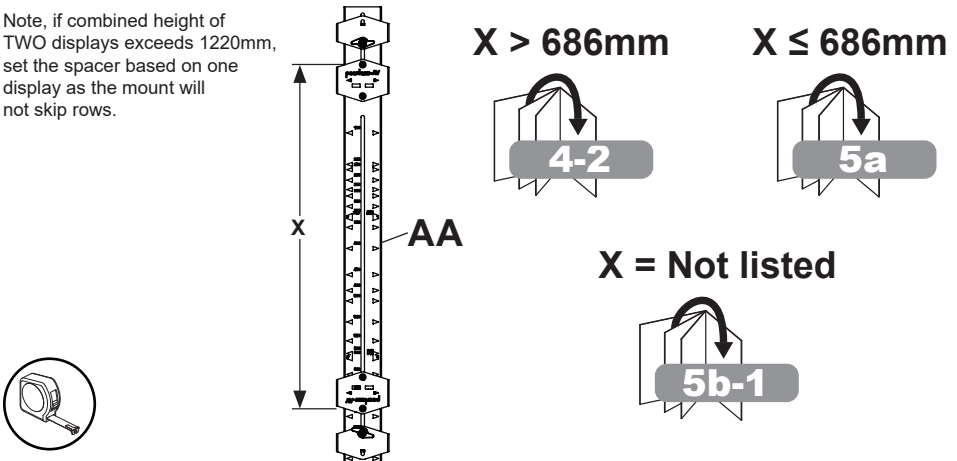
If determined in step 1 that video wall WILL skip rows, **X** = combined height of TWO displays.

If determined in step 1 that video wall will NOT skip rows, **X** = height of ONE display.

Locate this height dimension (**X**) on the front of spacer. If height is above 686mm, attach spacer extension.

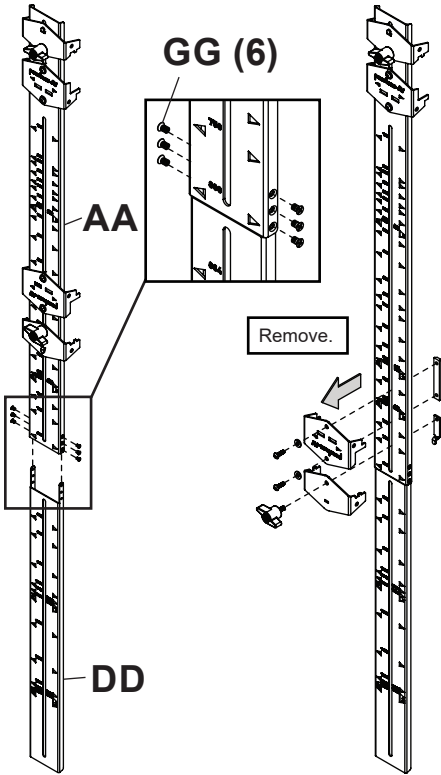
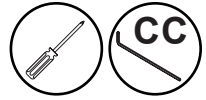
If height is not listed on the spacer, use height dimension to set custom spacing.

Note, if combined height of TWO displays exceeds 1220mm, set the spacer based on one display as the mount will not skip rows.

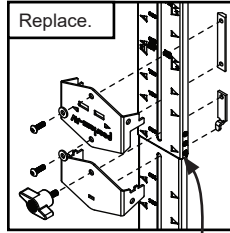


4-2

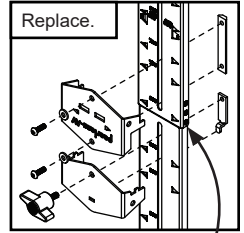
Add the extension when "X" measurement (step 4-1) is taller than 686mm. Detach lower fixed jaw and clamp bracket from main spacer assembly and reattach to the extension.



720mm

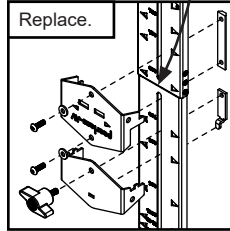


750mm

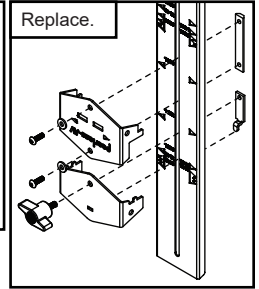


Note location of seam between spacer and extension.

800mm

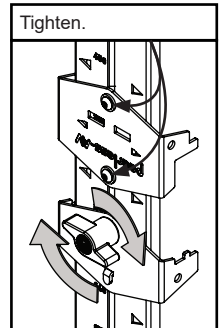
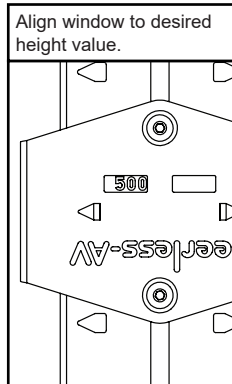
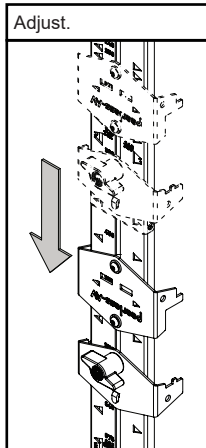
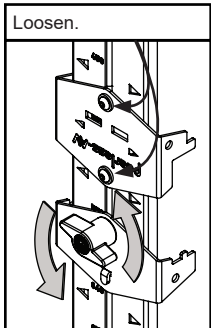


> 800mm



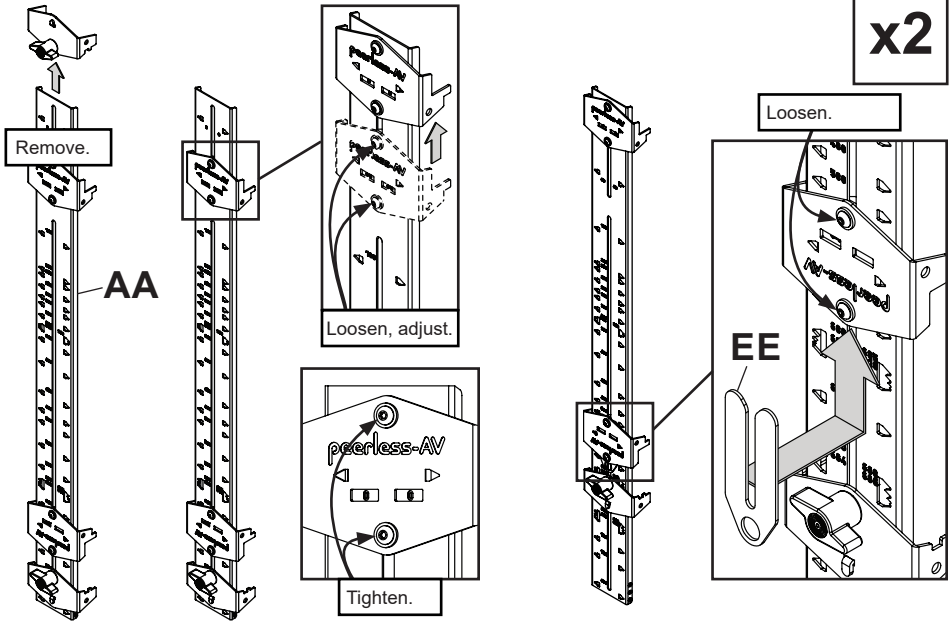
5a

Move spacer bracket and clamp to align window of spacer bracket with corresponding height value (measurement "X", step 4-1).



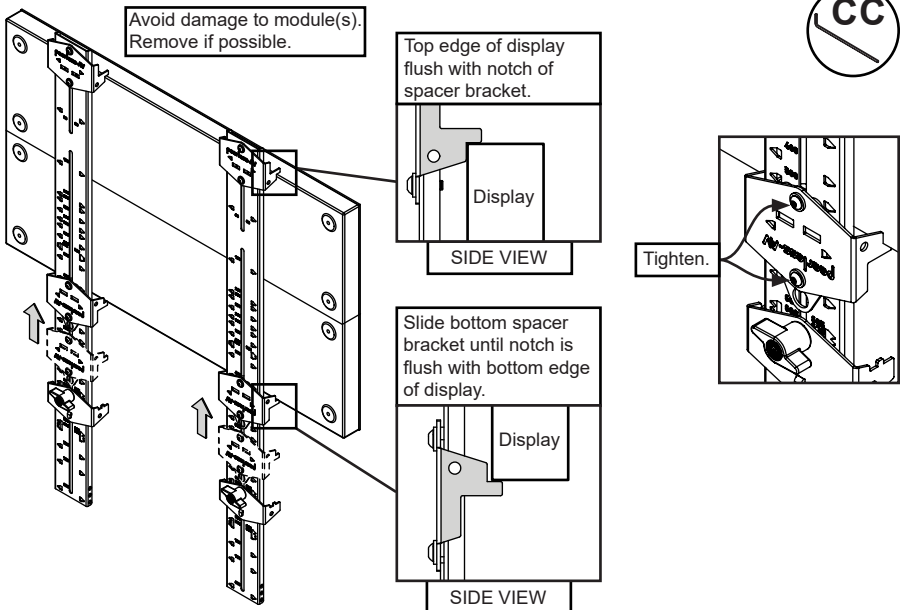
5b-1

If the height dimension is not listed on the spacer, measure it to set custom spacing. Remove top spacer clamp. Move upper spacer bracket to the zero position. Loosen lower spacer bracket to insert shim plate underneath to allow spacer bracket to slide freely.



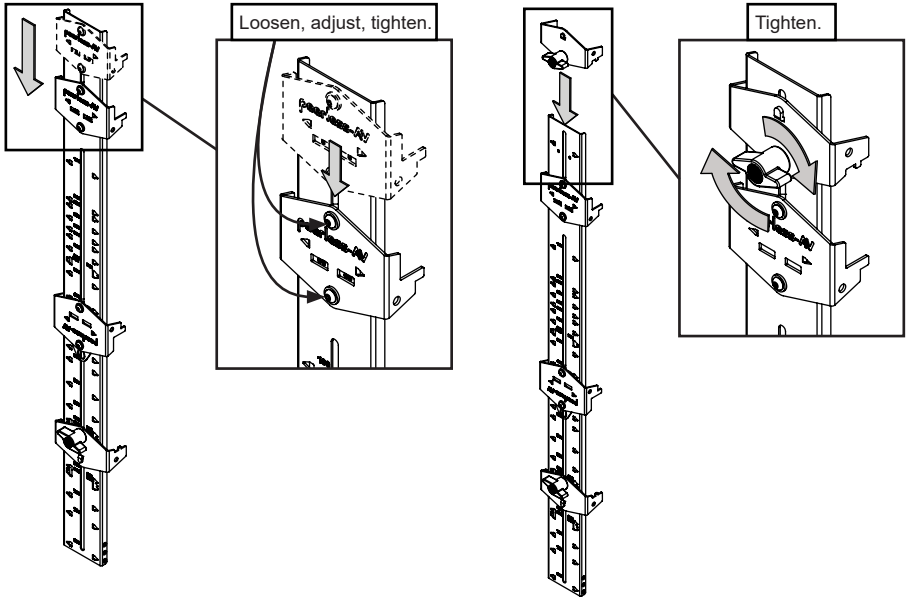
5b-2

With spacer brackets positioned wide enough to fit display(s) inside, position notch of top spacer bracket flush with top edge of display. Slide the bottom spacer bracket to the bottom edge of display. Tighten screws of bottom spacer bracket.



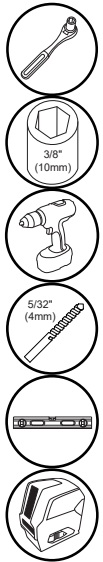
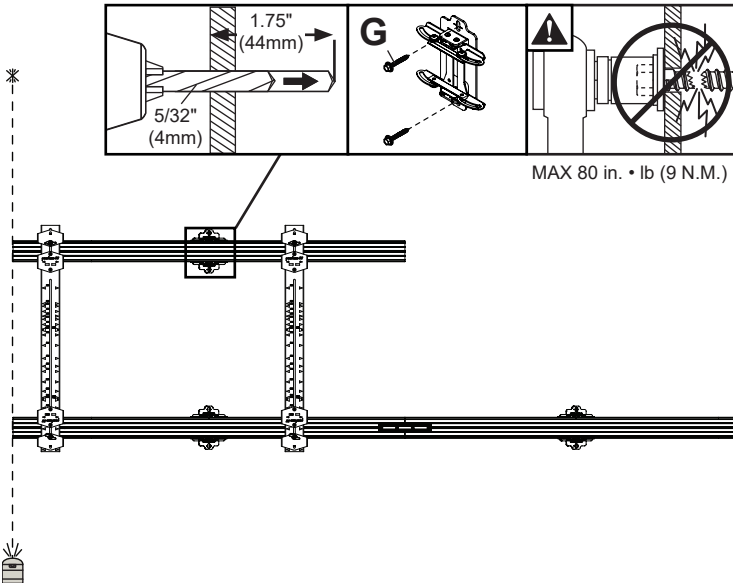
5b-3

Remove display. Return top spacer bracket to the 80mm position. Replace top clamp onto assembly.



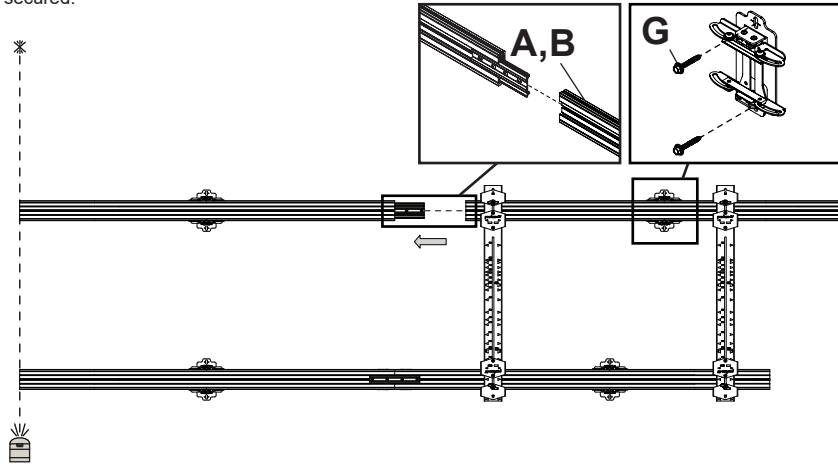
6-1

Install remaining extrusions using the spacers. Clamp the upper spacer jaw assembly to an uninstalled extrusion assembly. Clamp the bottom spacer jaw assembly to the installed extrusion. Vertically align extrusions with a laser. Drill mounting holes into supporting surface and install wall plates to the wall.



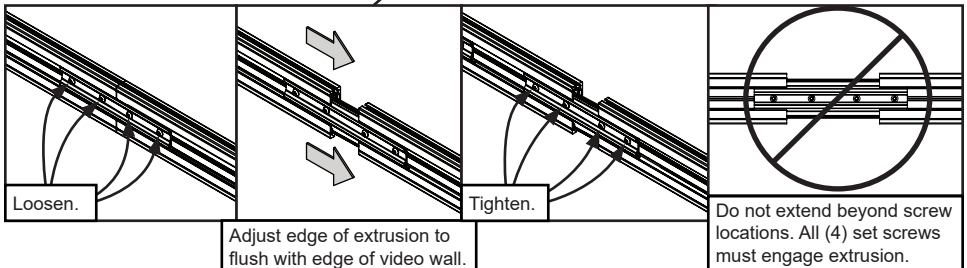
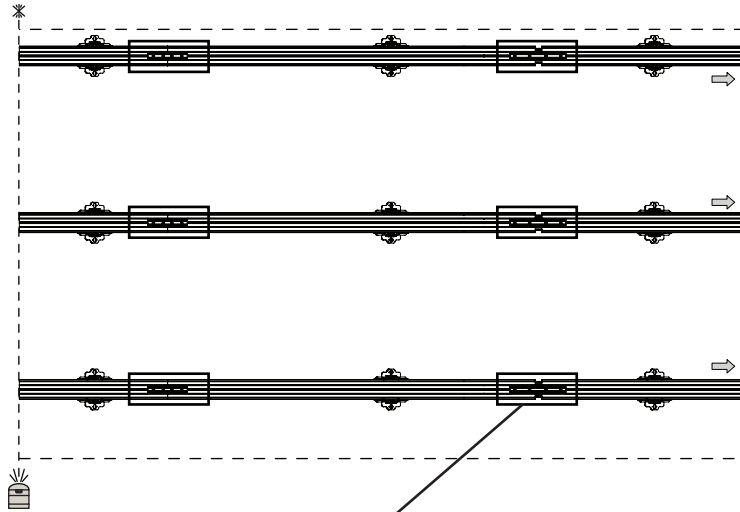
6-2

Loosen clamps and remove spacers. Repeat previous steps to install the next extrusion. Engage and secure connector plate to mounted extrusions. Secure wall plates to wall. Remove spacer when extrusions are fully secured.

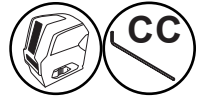


6-3

Once the entire row is installed, compare the length of the extrusion to width of the video wall. If the extrusion is shorter, use the expansion joint to extend the overall length of the extrusion so that it is flush with the video wall.

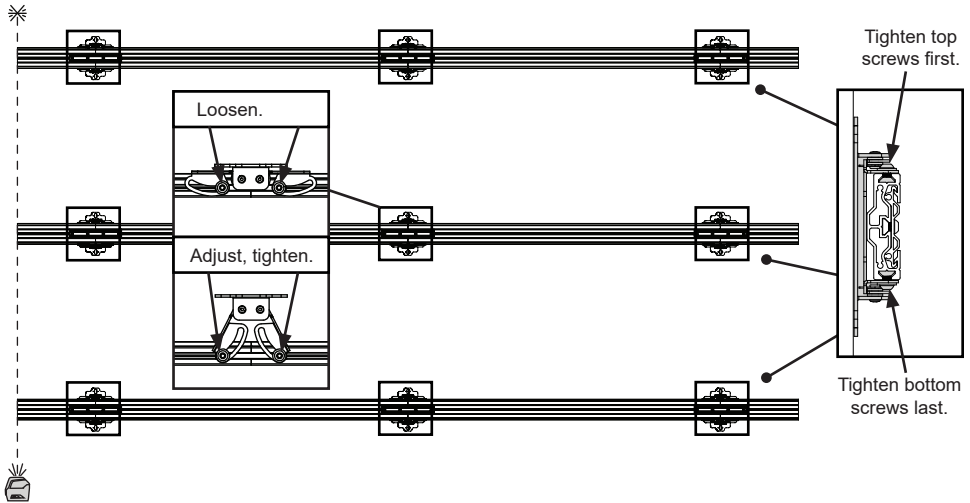
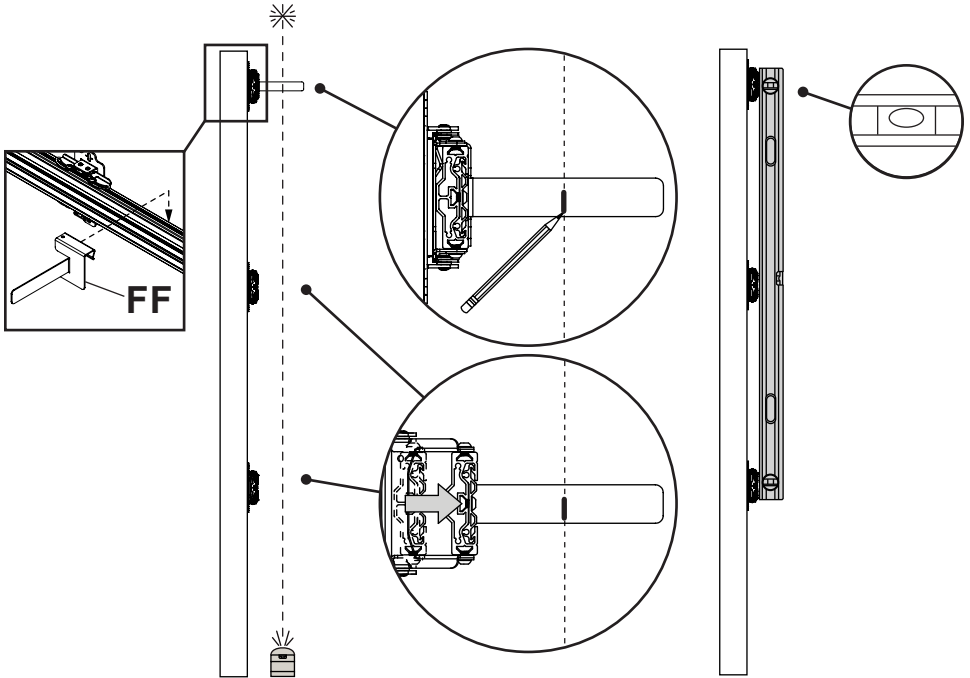


7-1



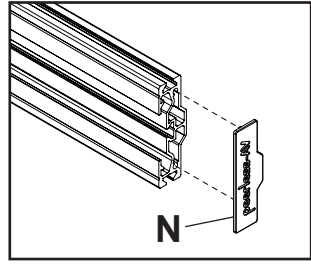
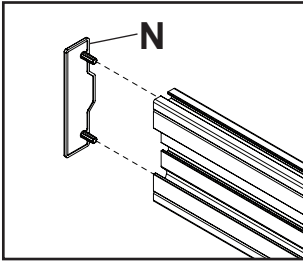
Set the laser level so that it is parallel to the mounting surface (wall). Measure from wall to laser in various locations and find the wall's high point. Mount the laser target at the location that is near the wall's high point and closest wall plate. Adjust the extrusion out slightly from the wall, tighten wall plate screws and mark laser line on the target. Move the target to the remaining wall plates, adjusting depth until the laser is on the line, tightening the screws as you go.

Double check using a straight edge to span three extrusions. Adjust low and high spots as needed.



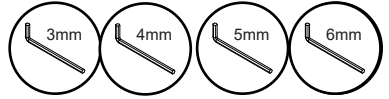
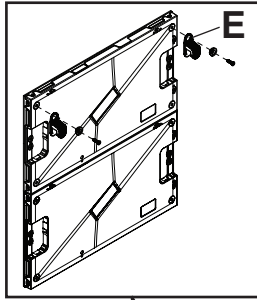
7-2

Attach end caps.

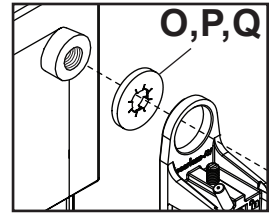
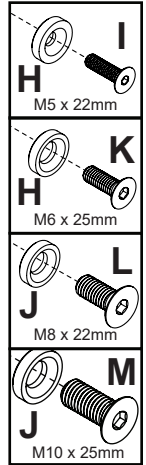
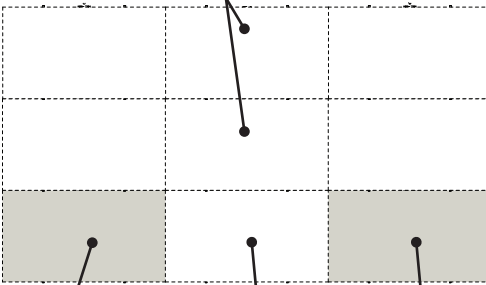


8a

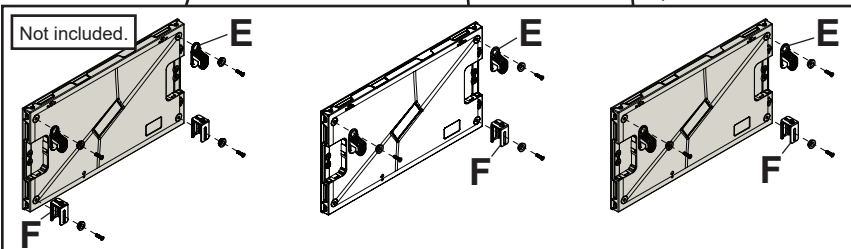
ODD
Number of Rows



If mounting hardware is preinstalled, remove and replace with hardware provided.

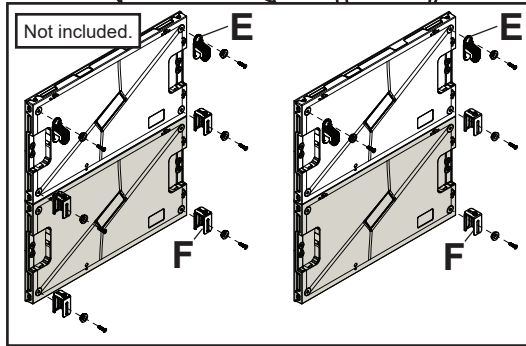
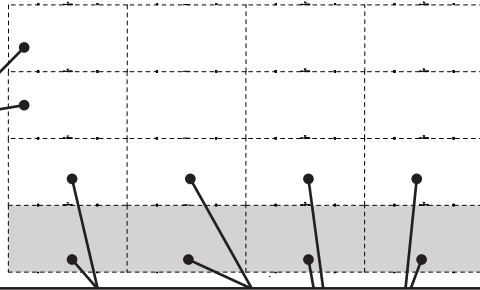
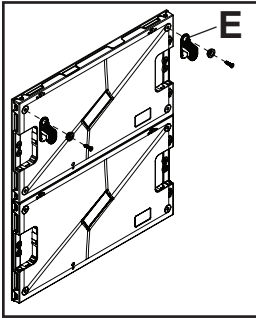


If display has raised mounting points, use boss washers as shown.

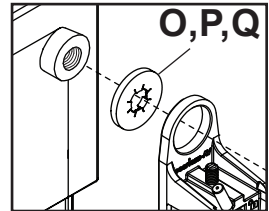
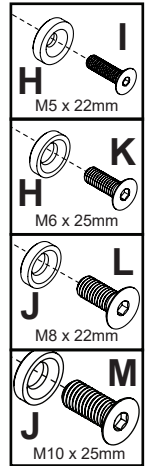


8b

EVEN
Number of Rows



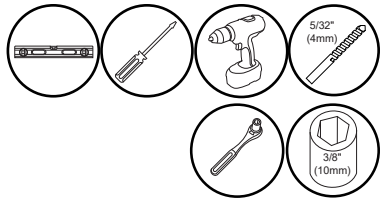
Join two cabinets together vertically using connecting system. Two displays attached together are then mounted onto extrusion as one.



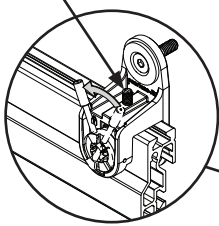
If display has raised mounting points, use boss washers as shown.

9-1

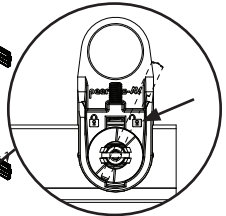
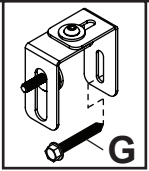
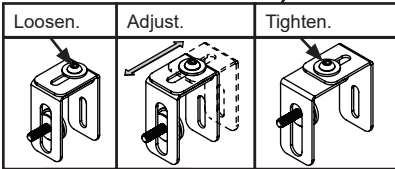
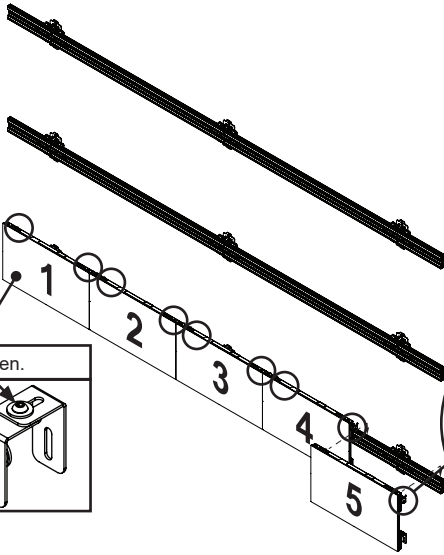
Hook display cabinets onto horizontal extrusion, adjust height to level and join cabinets together using display's connecting system. Adjust plumb with depth adjustment bracket, close latch, then run cables one at a time starting from left to right.



HEIGHT ADJUSTMENT

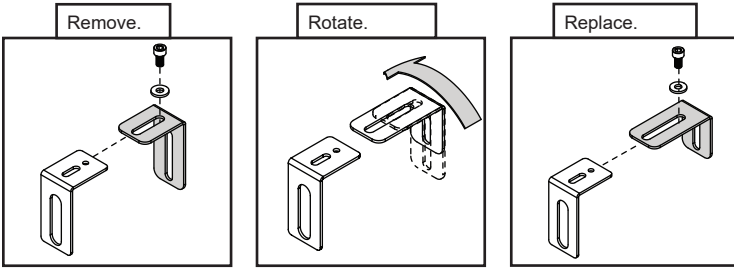


TURN LATCH LEVER TO SECURE



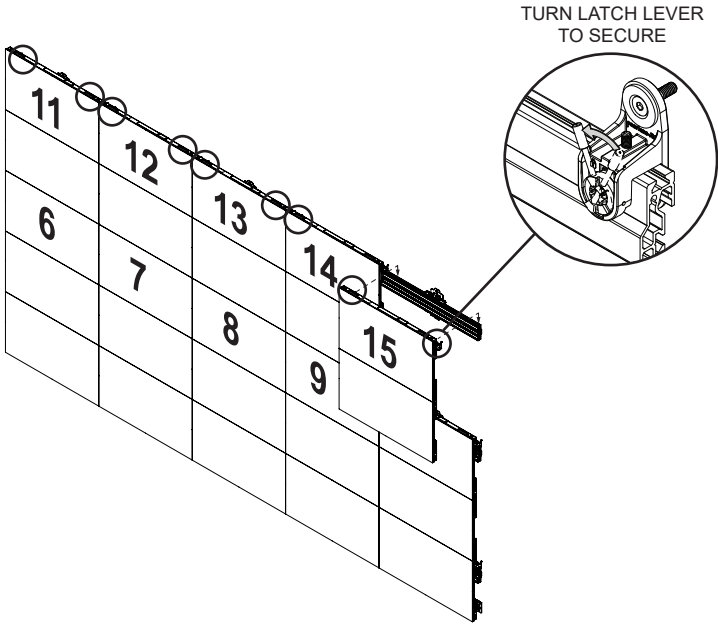
ENSURE LATCH IS UNLOCKED PRIOR TO INSTALLATION.

OPTIONAL: Depth adjustment bracket can be disassembled and 'L' bracket rotated as shown to achieve additional depth.



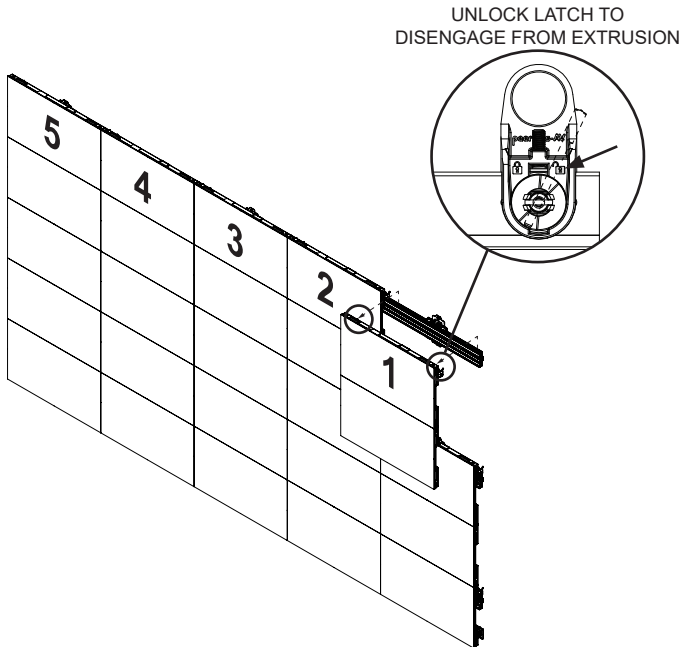
9-2

Hook display cabinets onto horizontal extrusion, adjust height to level and join cabinets together using connecting system. Close latch, then run cables one at a time starting from left to right.



9-3

To remove, start from the top right. Open latch assemblies, disconnect cables, separate cabinets and remove displays one set at a time.



ENG This page intentionally left blank.

ENG This page intentionally left blank.

| | | | | |
|---------------------|---------------------|---------------------|---------------------|---------------------|
| ENG Warranty | ESP Garantía | FRN Garantie | DEU Garantie | NEL Garantie |
| ITL Garanzia | ČES Záruka | SLK Záruka | POR Garantia | TÜR Garanti |

www.peerless-av.com/warranty • www.peerless-av.com • www.peerless-av.com/patents

peerless-AV[®]

Peerless-AV
2300 White Oak Circle
Aurora, IL 60502, USA
info@peerless-av.com

(800) 865-2112
(630) 375-5100

Peerless-AV EMEA
Unit 2, Curo Park
Frogmore, St. Albans,
Hertfordshire, AL2 2DD
United Kingdom

+44 (0) 1923 200 100

Peerless-AV B.V.
Papendorpseweg 75
3528 BJ Utrecht
The Netherlands

+31 (0) 70 770 8037

Peerless-AV Latin America
Av. de las Industrias 413
Parque Industrial Escobedo
General Escobedo N.L.,
México 66062

+52 (81) 8384-8300