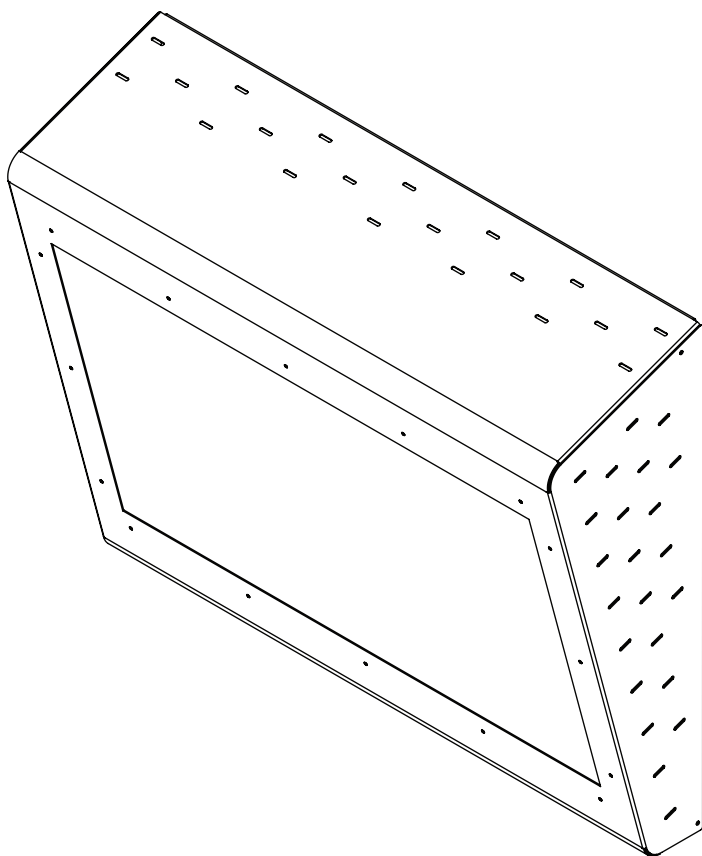




KLR62232, KLR64255



⚠ WARNING

ENG - This product is designed to be installed on wood stud, solid concrete or cinder block walls. Hardware is included for wood stud, solid concrete and cinder block installation. Do not begin to install product until you have read and understood the instructions and warnings contained in this user guide. Before installing make sure the supporting surface will support the combined load of the equipment and hardware. Screws must be tightly secured. Do not overtighten screws or damage can occur and product may fail. Never exceed the Maximum Load Capacity. Always use an assistant or mechanical lifting equipment to safely lift and position equipment. This product is intended for indoor use only. Use of this product outdoors could lead to product failure or personal injury. Be careful not to pinch fingers when operating the mount. To reduce the risk of electric shock or fire, do not expose product to water or moisture. Be sure power cord is routed so that it will not be tripped on, stepped on, or pinched by heavy items. Avoid overloading electrical outlets or extension cords. Always disconnect the power cord from the power outlet when installing, servicing, or not using the product for an extended period of time. Do not block ventilation slots or fan exhaust on product. Blocking airflow could damage product. Arrange product to allow air to flow freely around product. Keep product away from direct sunlight or any source of heat. For support please call 1-800-865-2112.

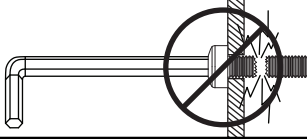
ENG Symbols



ENG **WARNING**

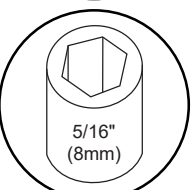
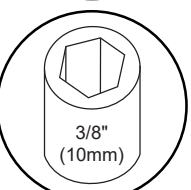
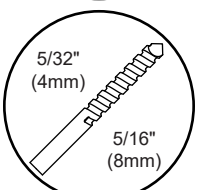
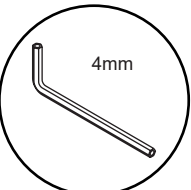
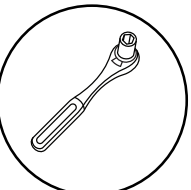
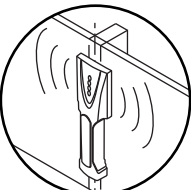
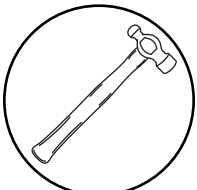
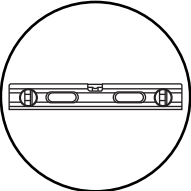
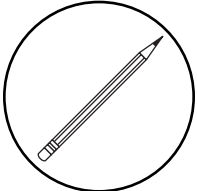


ENG Skip to step.

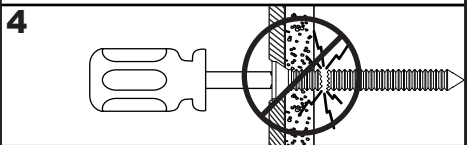
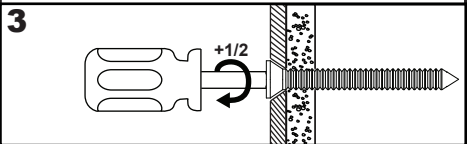
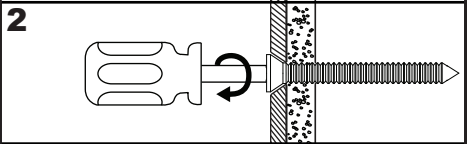
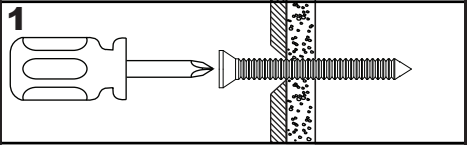


ENG Do not overtighten screws.

ENG Tools Needed for Assembly.



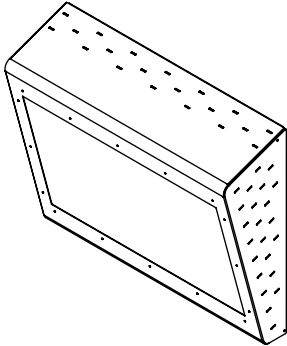
ENG To properly tighten screws: Tighten until screw head makes contact, then tighten another 1/2 turn. Do not overtighten screws.



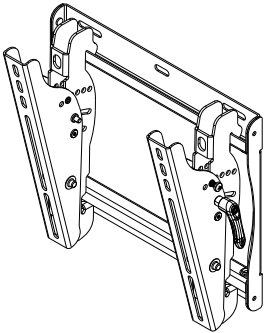
ENG Parts (Before beginning, make sure you have all parts shown below).

Parts List		KLR62232	KLR64255
Description	Qty	Part #	Part #
A enclosure	1	152-1544-1	152-1545-1
B wall mount	1	ST635	ST640
C #14 x 2-1/2" wood screw	4	5S1-015-C03	5S1-015-C03
D 8mm concrete anchor	4	590-0320	590-0320
E power strip	1	600-0370	600-0370
F locking bracket	1	152-T1502	152-T1511
G hook on bracket	1	152-T1508	152-T1520
H M5 x 20mm	3	510-1065	510-1065

A (1)
enclosure

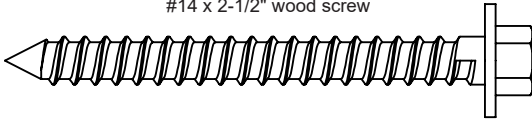


B (1)
wall mount



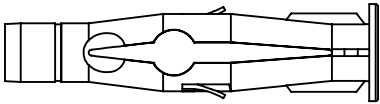
C (4)

#14 x 2-1/2" wood screw

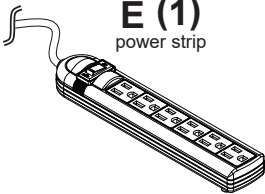


D (4)

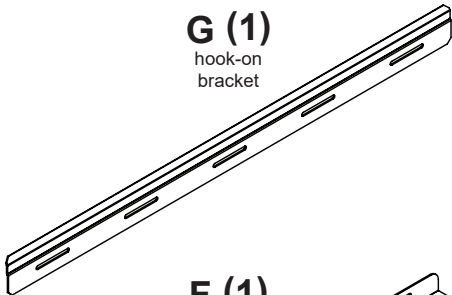
8mm concrete anchor



E (1)
power strip



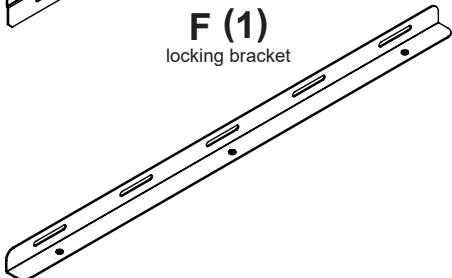
G (1)
hook-on
bracket



H (3)
M5 x 20mm

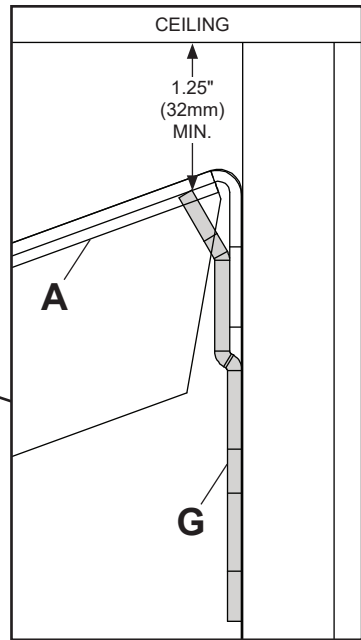
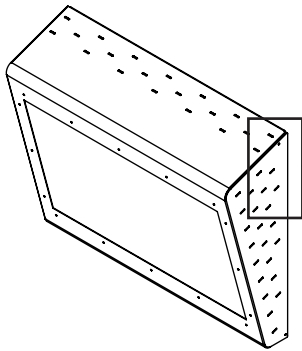


F (1)
locking bracket



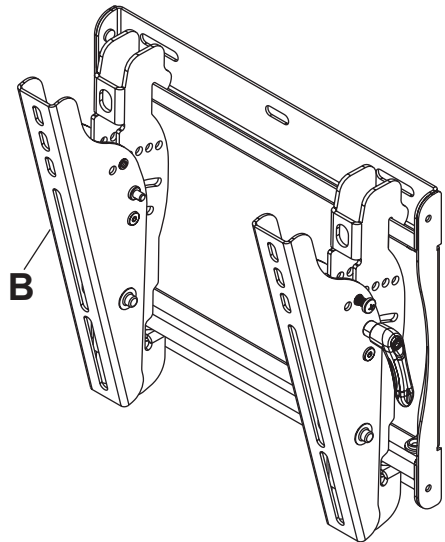
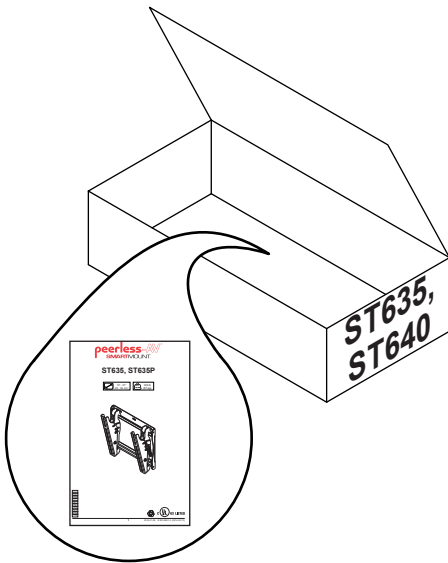
1

ENG Determine mounting clearance, 1.25" minimum from ceiling.



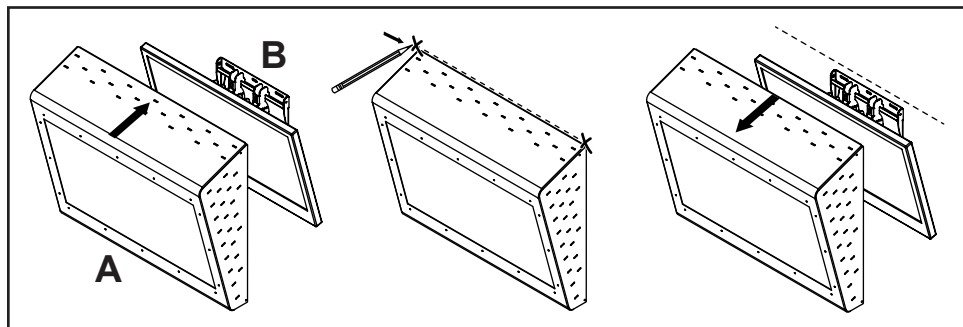
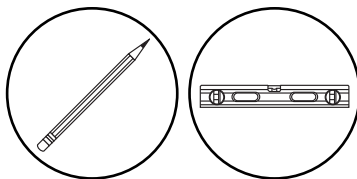
2

ENG Follow and complete instructions for included wall mount.



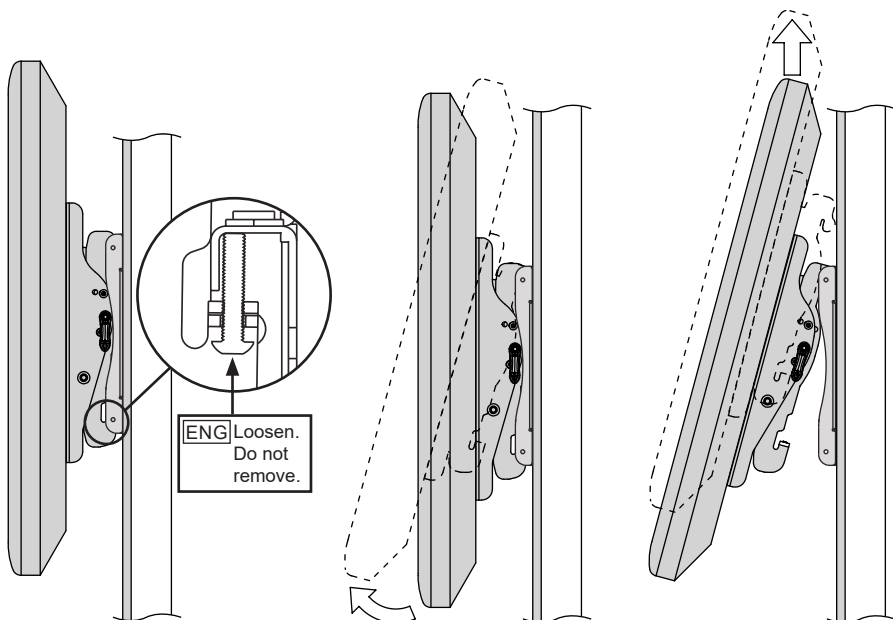
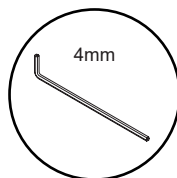
3

ENG Hold enclosure over display in desired location, and make sure that it is level. Mark the top location of the enclosure.



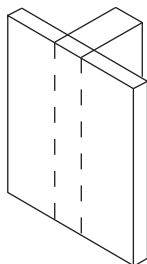
4

ENG Remove display.

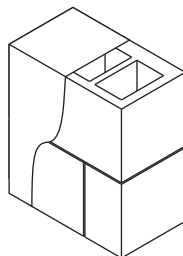
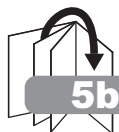


5

ENG Wood stud wall.



ENG Concrete/Cinder block.

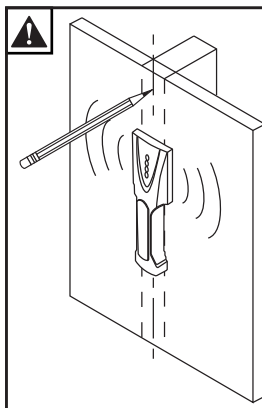
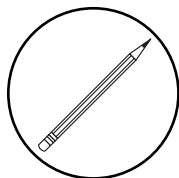
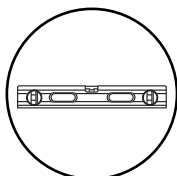
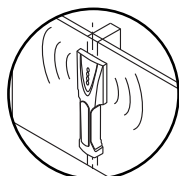


5a

⚠ WARNING

ENG - When installing Peerless wall mounts on a wood stud wall covered with gypsum board (drywall), verify that the wood studs are a minimum of 2" x 4" nominal size. Do not install over gypsum board thicker than 5/8".

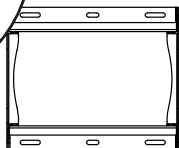
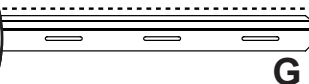
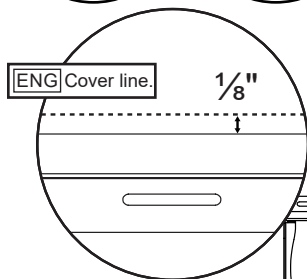
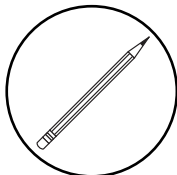
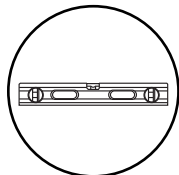
5a-1



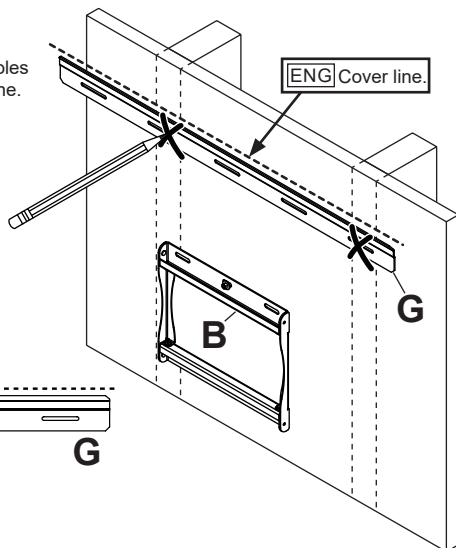
ENG Use stud finder to locate and mark stud center lines.

5a-2

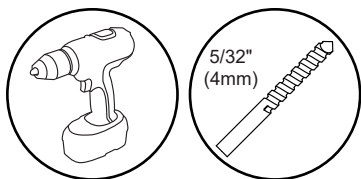
ENG Mark mounting holes on stud center lines. Mounting holes should be positioned 1/8" under the horizontal cover line.



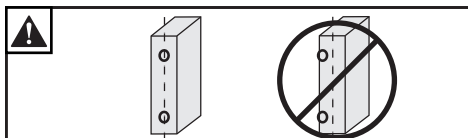
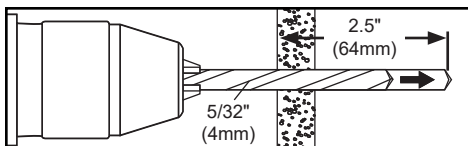
B



5a-3



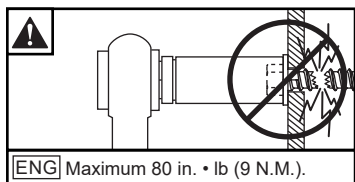
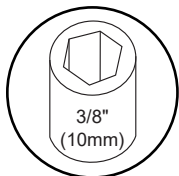
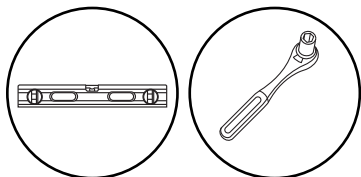
ENG Drill mounting holes into supporting surface (2.5" (64mm) minimum depth required).



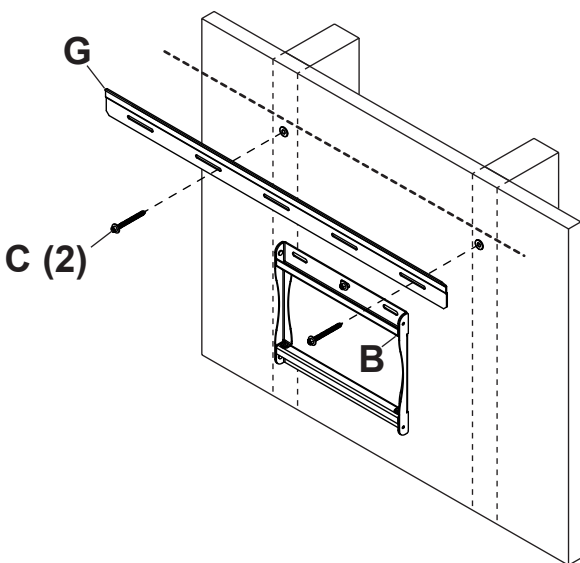
ENG Mounting hole must center on stud.

5a-4

ENG Level wallplate. Install using wood screws provided.



ENG Maximum 80 in. • lb (9 N.M.).



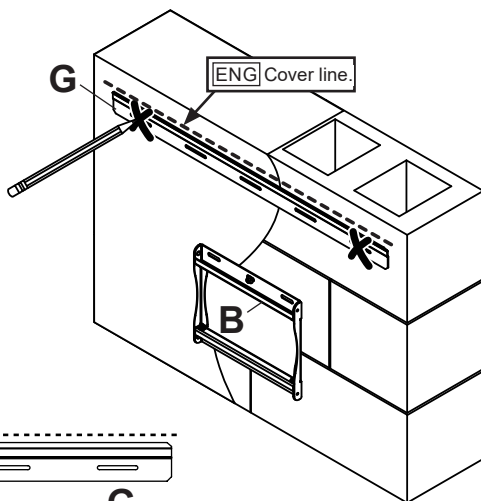
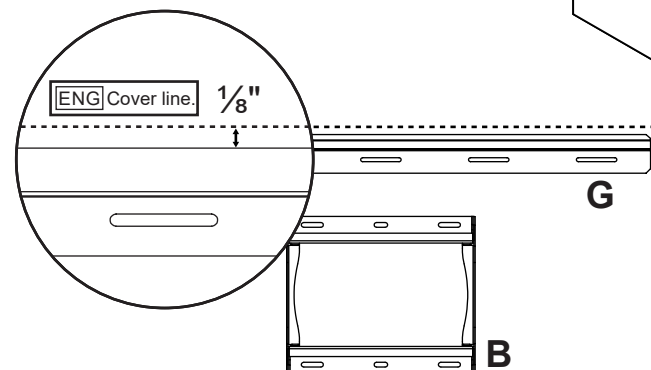
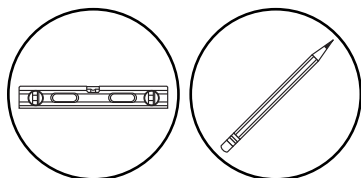
5b

⚠ WARNING

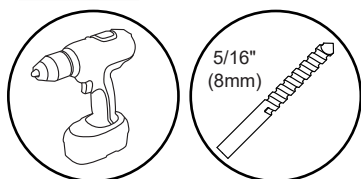
ENG - When installing Peerless wall mounts on a concrete wall, the wall must be at least 8" thick with a minimum compressive strength of 2000 psi. When installing Peerless wall mounts on a cinder block wall, the cinder blocks must meet ASTM C-90 specifications and have a minimum nominal width of 8". Do not drill into mortar joints! Be sure to mount in a solid part of the block, generally 1" (25mm) minimum from the side of the block. It is suggested that a standard electric drill on slow setting is used to drill the hole instead of a hammer drill to avoid breaking out the back of the hole when entering a void or cavity. Never attach concrete expansion anchors to concrete or cinder block covered with plaster, drywall or other finishing material.

5b-1

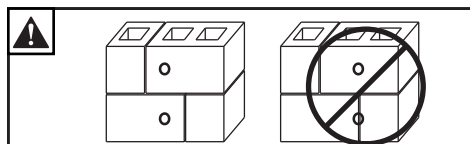
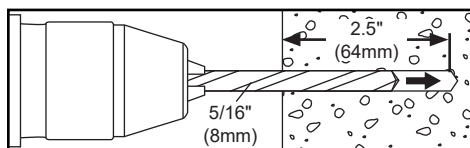
ENG Mark mounting holes. Mounting holes should be positioned 1/8" under the horizontal cover line.



5b-2

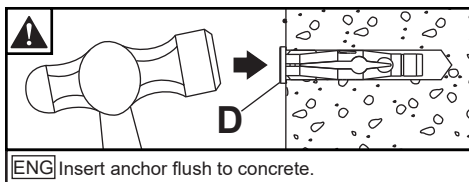
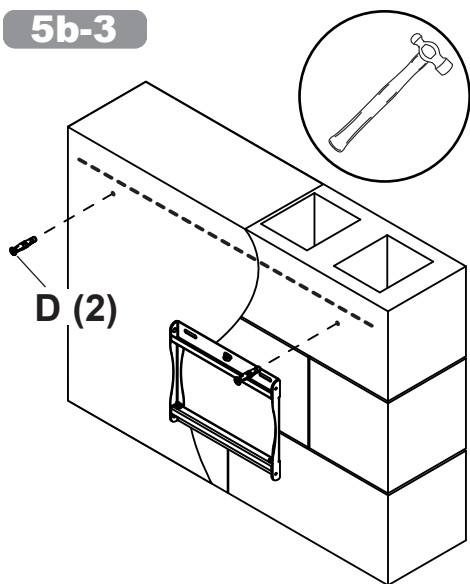


ENG Drill mounting holes into supporting surface (2.5" (64mm) minimum depth required).



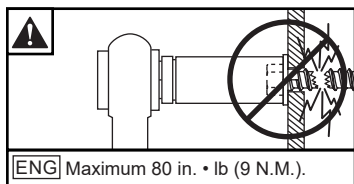
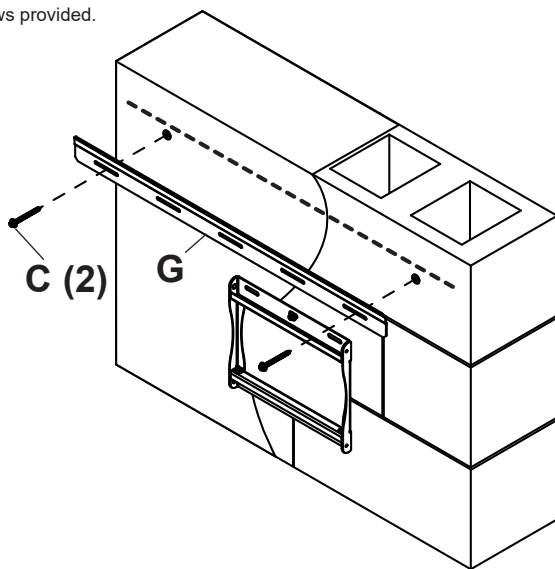
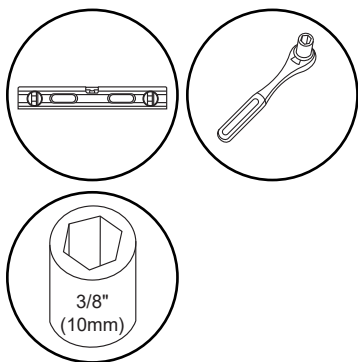
ENG Do not drill into mortar joints.

5b-3



5b-4

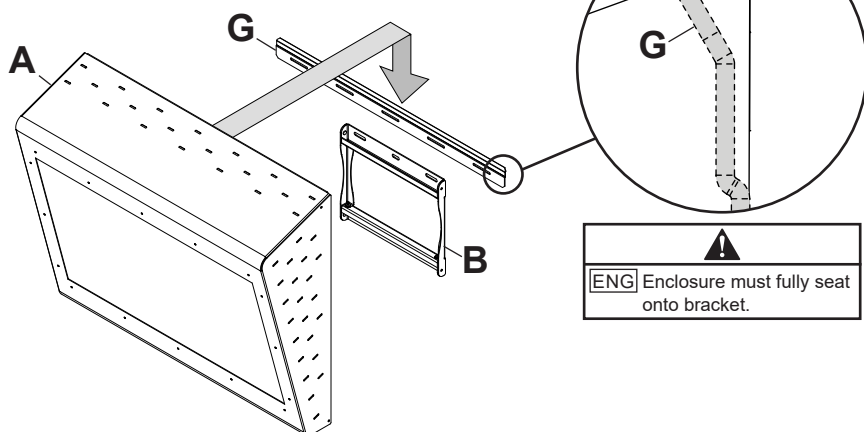
ENG Level wallplate. Install using wood screws provided.



ENG This page intentionally left blank.

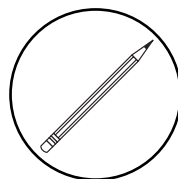
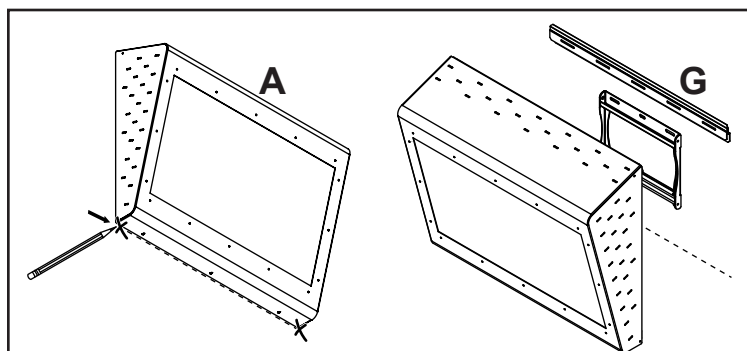
6

ENG Hang enclosure onto hook on bracket.

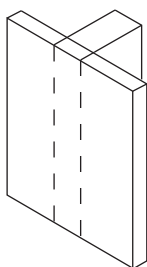


7

ENG Mark the bottom location of the enclosure.



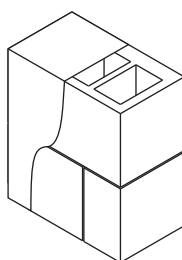
8



[ENG] Wood stud wall.



8a



[ENG] Concrete/Cinder block.



8b

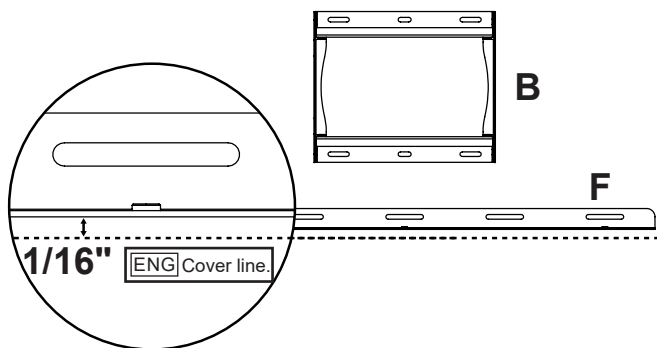
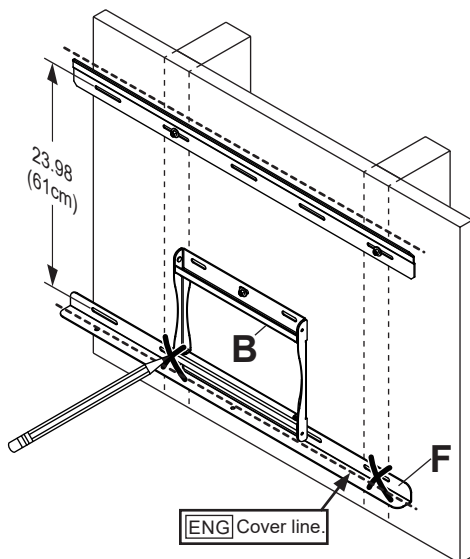
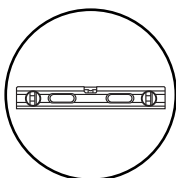
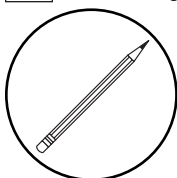
8a

⚠ WARNING

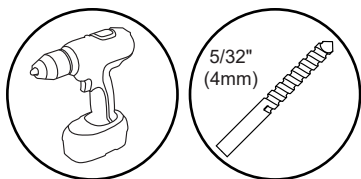
ENG - When installing Peerless wall mounts on a wood stud wall covered with gypsum board (drywall), verify that the wood studs are a minimum of 2" x 4" nominal size. Do not install over gypsum board thicker than 5/8".

8a-1

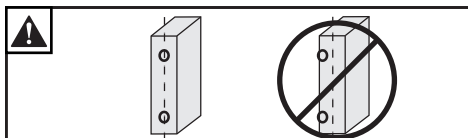
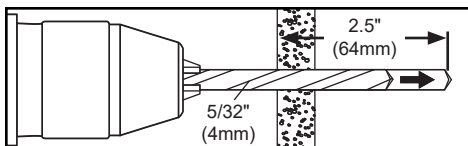
[ENG] Mark mounting holes on stud center lines.



8a-2



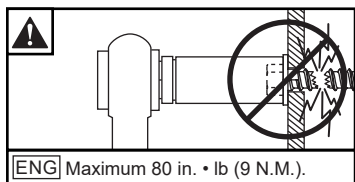
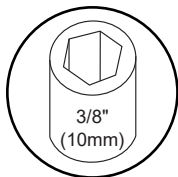
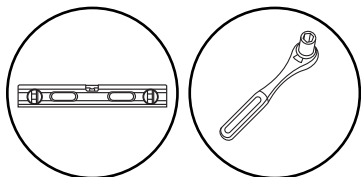
ENG Drill mounting holes into supporting surface (2.5" (64mm) minimum depth required).



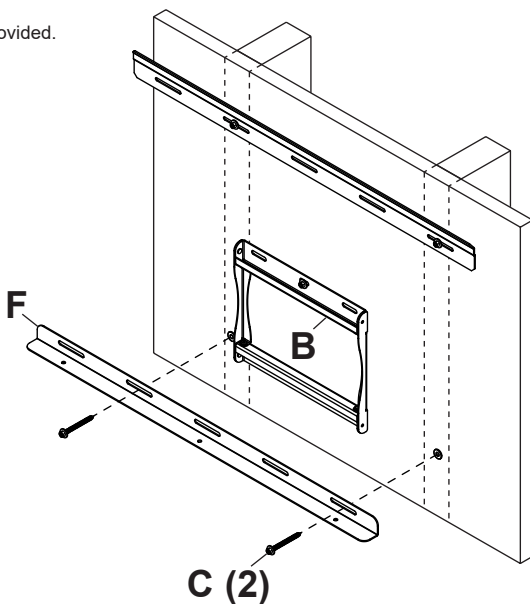
ENG Mounting hole must center on stud.

8a-3

ENG Level wallplate. Install using wood screws provided.



ENG Maximum 80 in. • lb (9 N.M.).



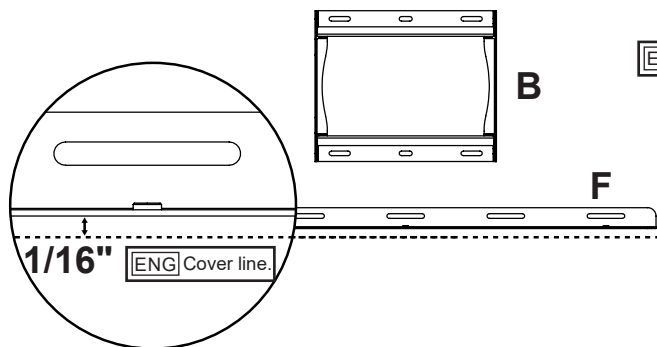
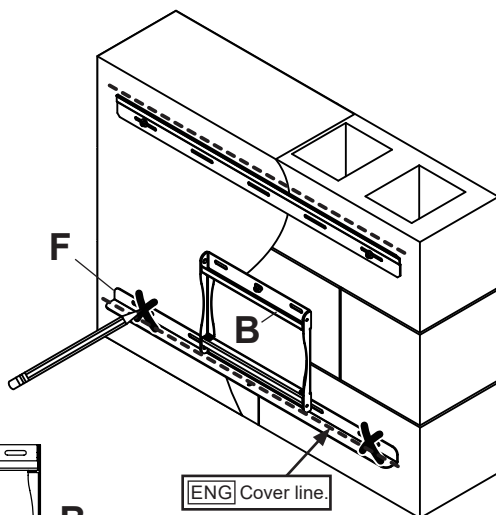
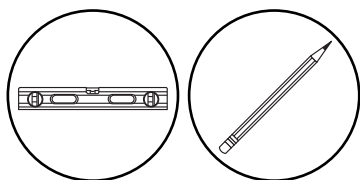
8b

▲ WARNING

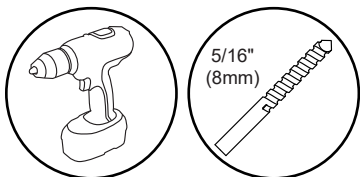
ENG - When installing Peerless wall mounts on a concrete wall, the wall must be at least 8" thick with a minimum compressive strength of 2000 psi. When installing Peerless wall mounts on a cinder block wall, the cinder blocks must meet ASTM C-90 specifications and have a minimum nominal width of 8". Do not drill into mortar joints! Be sure to mount in a solid part of the block, generally 1" (25mm) minimum from the side of the block. It is suggested that a standard electric drill on slow setting is used to drill the hole instead of a hammer drill to avoid breaking out the back of the hole when entering a void or cavity. Never attach concrete expansion anchors to concrete or cinder block covered with plaster, drywall or other finishing material.

8b-1

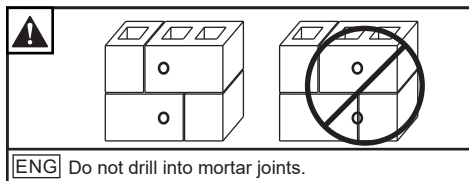
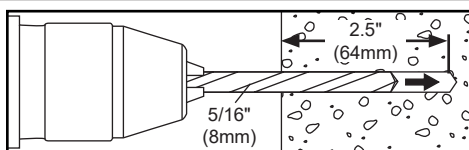
ENG Mark mounting holes.



8b-2

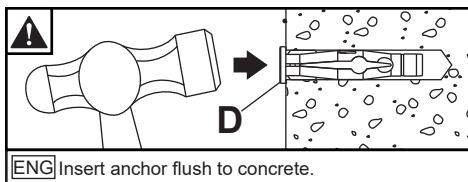
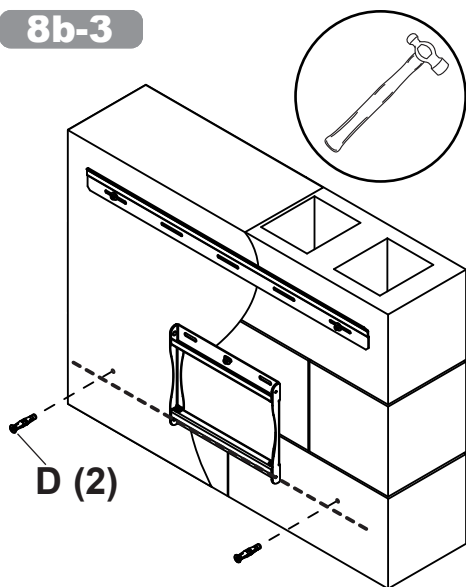


ENG Drill mounting holes into supporting surface (2.5" (64mm) minimum depth required).



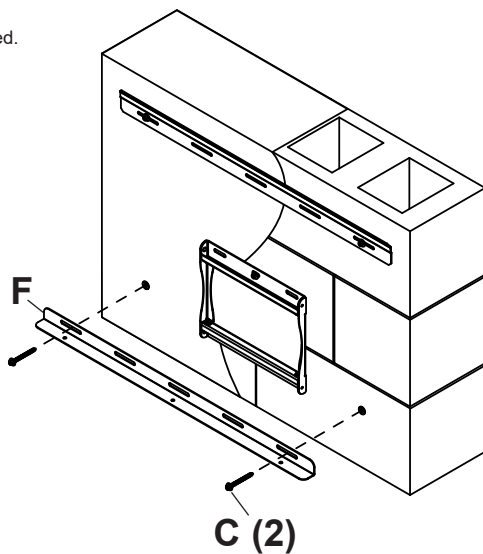
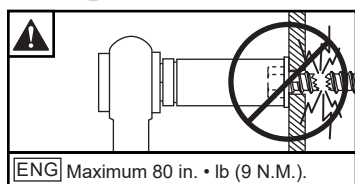
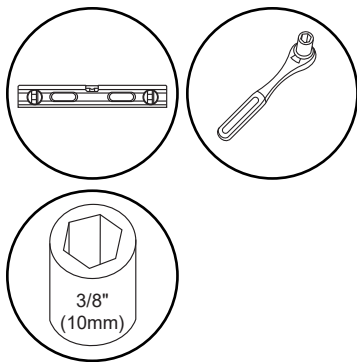
ENG Do not drill into mortar joints.

8b-3



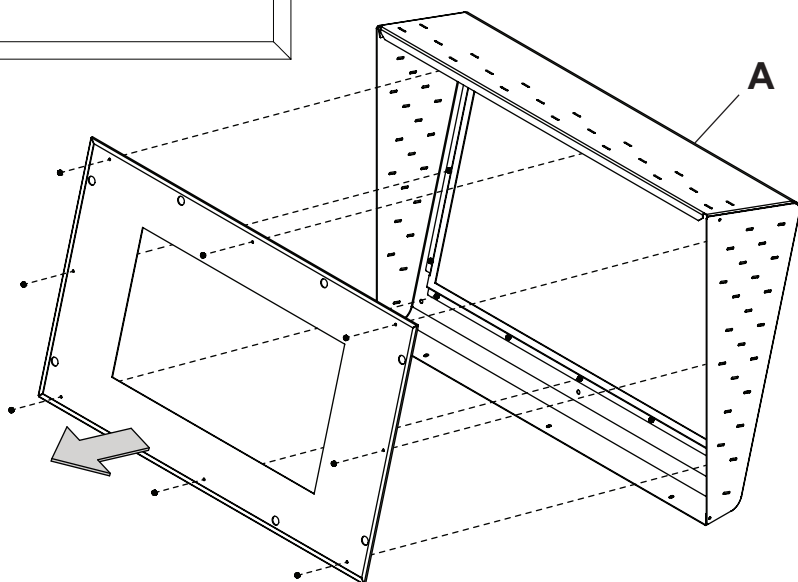
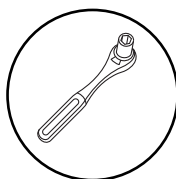
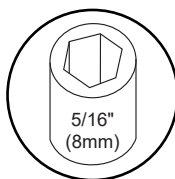
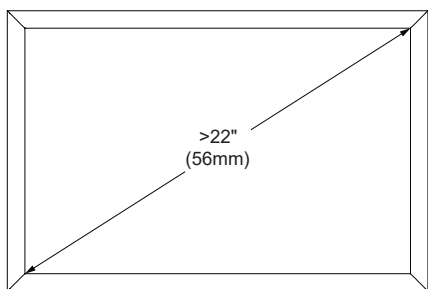
8b-4

ENG Level wallplate. Install using wood screws provided.



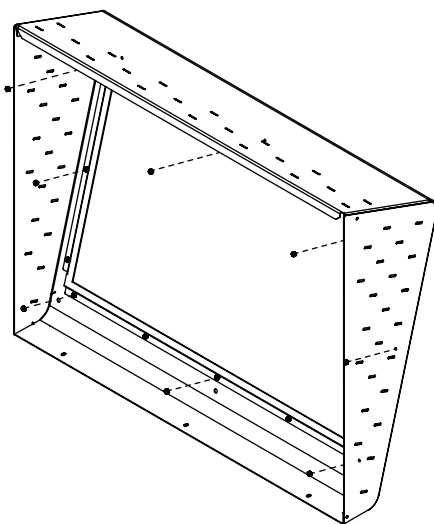
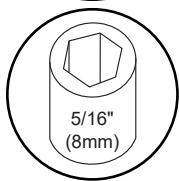
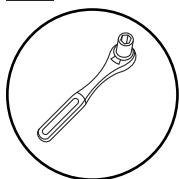
9-1

ENG **KLR62232 only:** Optional; remove panel reducer if screen size is greater than 22" to open viewing area.



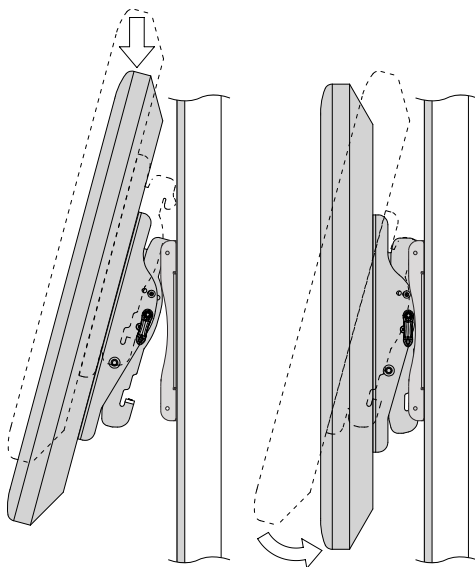
9-2

ENG Replace hardware.

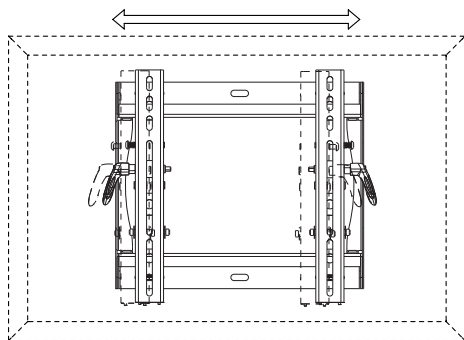


10

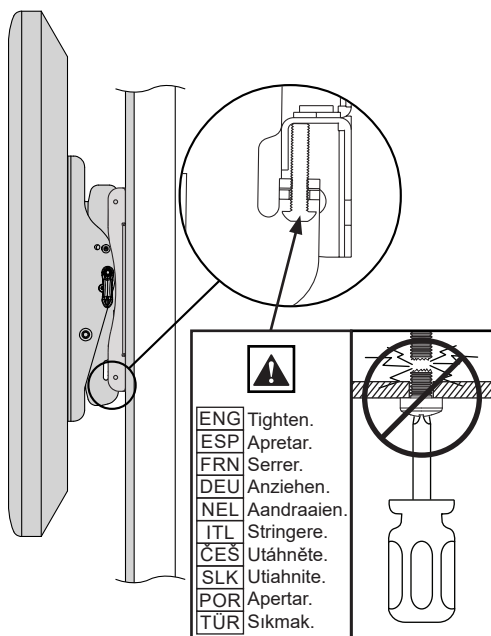
ENG Replace display.



11

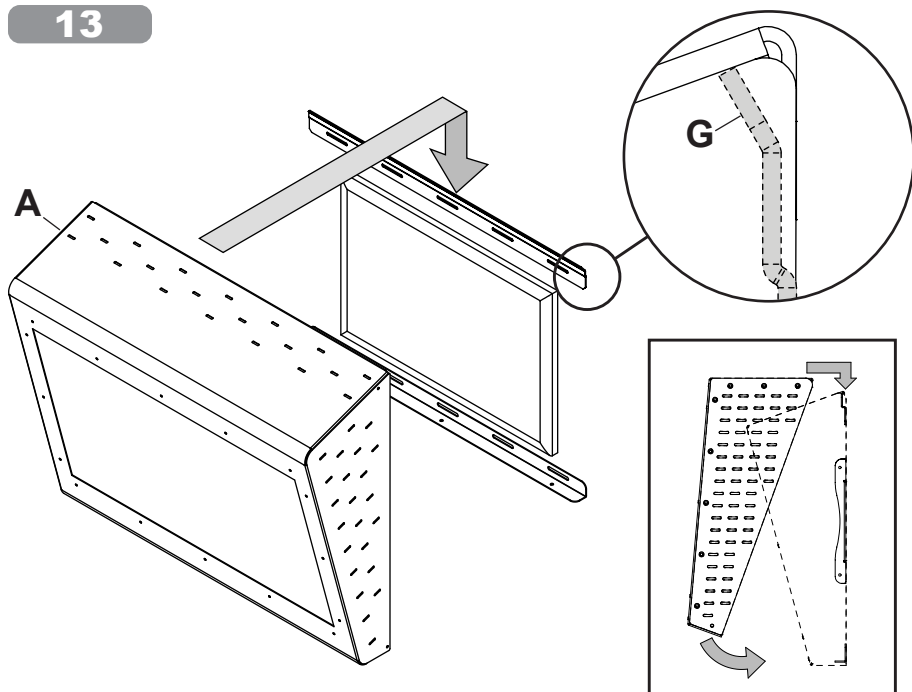


12

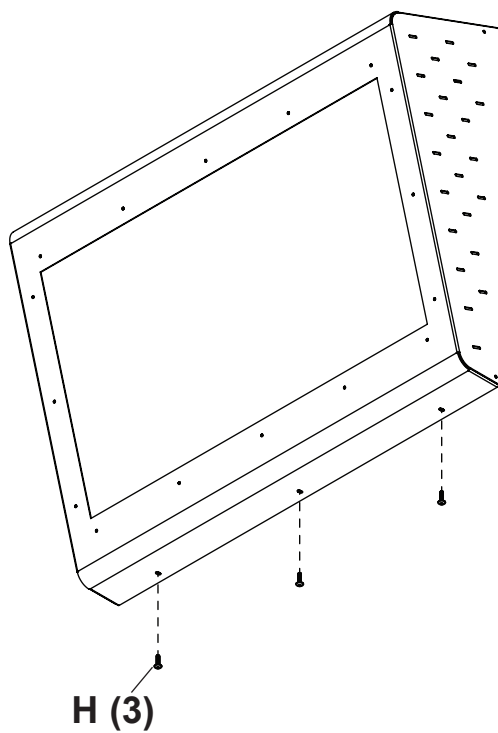
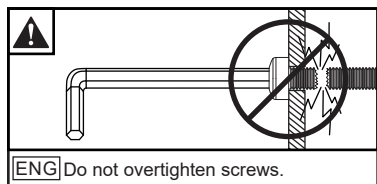
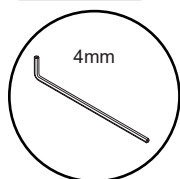


4mm

13



14



ENG This page intentionally left blank.

ENG	Warranty	ESP	Garantía	FRN	Garantie	DEU	Garantie	NEL	Garantie
ITL	Garanzia	ČES	Záruka	SLK	Záruka	POR	Garantia	TÜR	Garanti

www.peerless-av.com/warranty • www.peerless-av.com • www.peerless-av.com/patents

peerless-AV®

Peerless-AV
2300 White Oak Circle
Aurora, IL 60502, USA
info@peerless-av.com

(800) 865-2112
(630) 375-5100

Peerless-AV EMEA
Unit 2, Curo Park
Frogmore, St. Albans,
Hertfordshire, AL2 2DD
United Kingdom

+44 (0) 1923 200 100

Peerless-AV B.V.
Papendorpseweg 75
3528 BJ Utrecht
The Netherlands

+31 (0) 70 770 8037

Peerless-AV Latin America
Av. de las Industrias 413
Parque Industrial Escobedo
General Escobedo N.L.,
México 66062

+52 (81) 8384-8300