



Installation and Assembly:

Mounting Hardware for Safety and Security Cable Kit

Model: HLC-KIT, HLC-KIT-Q10

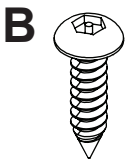
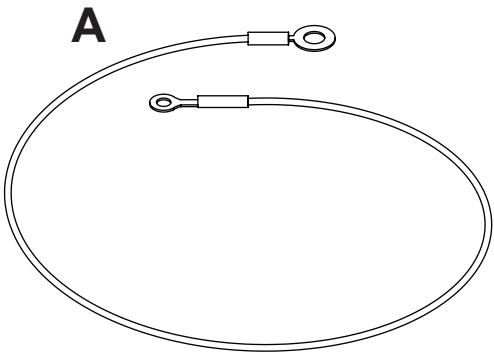
⚠ WARNING

Before installing make sure the supporting surface will support the combined load of the equipment and hardware. Screws must be tightly secured. Do not overtighten screws or damage can occur and product may fail. Never exceed the Maximum Load Capacity. Always use an assistant or mechanical lifting equipment to safely lift and position equipment. This product is intended for indoor use only. Use of this product outdoors could lead to product failure or personal injury. Be careful not to pinch fingers when operating the mount. For support please call customer care at 1-800-865-2112.

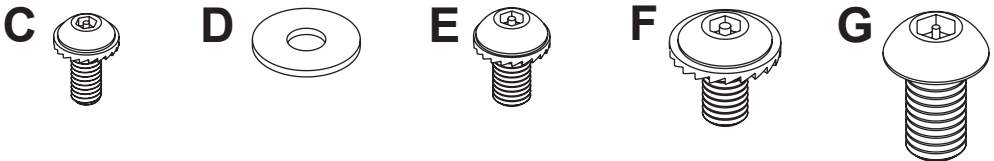
Parts List

Description	Qty.	HLC-KIT Part #	HLC-KIT-Q10 Qty.	HLC-KIT-Q10 Part #
A safety cable	1	600-0187	10	600-0187
B 10-16 x 3/4" socket pin wood screw	1	10018811	10	10018811
C M4 x 12mm socket pin screw	1	510-1060	10	510-1060
D #10 flat washer	1	540-9400	10	540-9400
E M5 x 10mm socket pin serrated washer head screw	1	510-1126	10	510-1126
F M6 x 12mm socket pin serrated washer head screw	1	510-1050	10	510-1050
G M8 x 15mm socket pin screw	1	520-1068	10	520-1068
H M4 x 12mm socket pin screw	1	520-1079	10	520-1079
I M4 x 25mm socket pin screw	1	520-2082	10	520-2082
J M5 x 12mm socket pin screw	1	520-1064	10	520-1064
K M5 x 25mm socket pin screw	1	520-1122	10	520-1122
L M6 x 20mm socket pin screw	1	520-9554	10	520-9554
M M4 flat washer	1	540-2081	10	540-2081
N #8 split lock washer	1	540-2044	10	540-2044
O #10 flat washer	1	540-9400	10	540-9400
P #10 split lock washer	1	540-1035	10	540-1035
Q 1/4" flat washer	1	540-9440	10	540-9440
R 1/4" split lock washer	1	540-9402	10	540-9402
S 4mm allen wrench	1	560-9646	3	560-9646
T 4mm socket pin driver	1	560-1133	3	560-1133

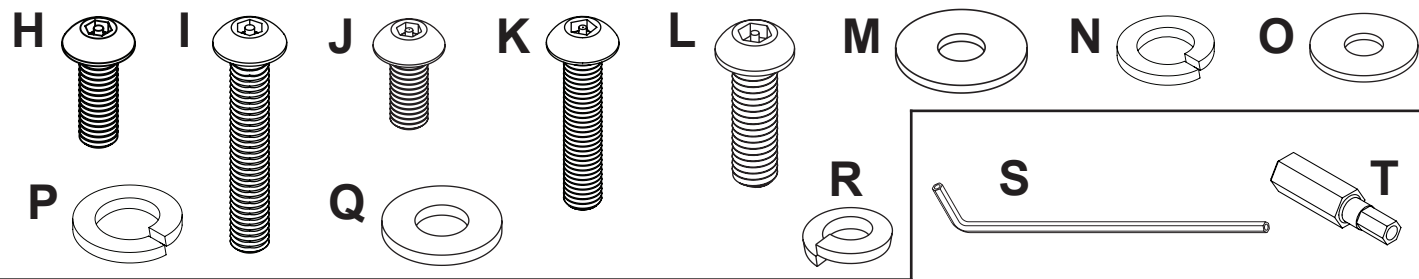
NOTE: Read instruction sheet before you start installation and assembly.
Parts may appear slightly different than illustrated.



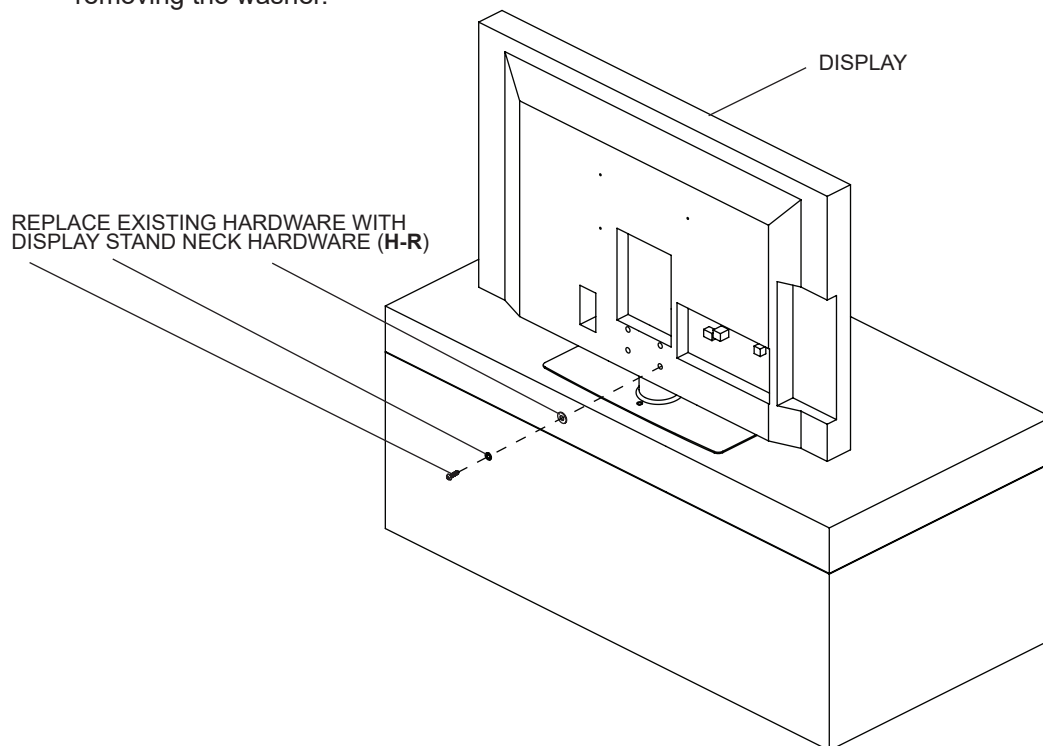
BACK OF DISPLAY HARDWARE



DISPLAY STAND NECK HARDWARE

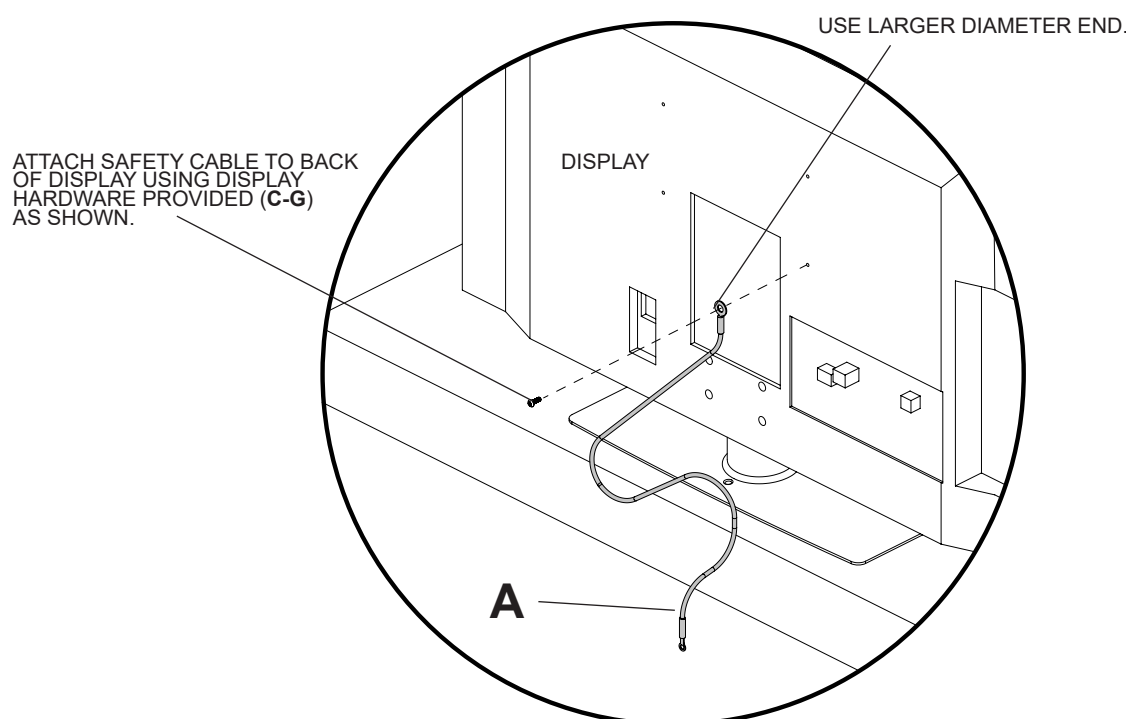


- 1** Remove one stand mounting screw (provided with display) and replace it with display stand neck hardware provided (**H-R**).
NOTE: Verify that washer diameter is smaller than the recess it is going into. Not doing so may result in difficulty removing the washer.



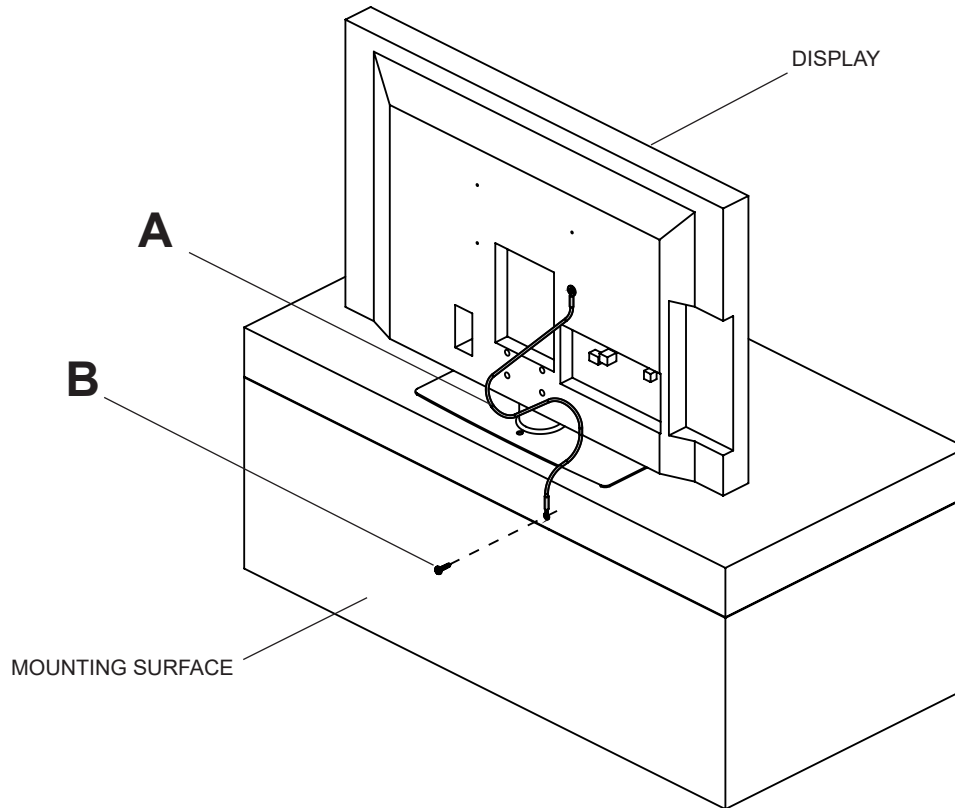
Attaching Safety/Security Cable to Display

- 2** Attach larger diameter end of safety cable (**A**) to back of display as shown using back of display hardware provided (**C-G**).
WARNING: Safety cable is not to support the weight of the display.



Attaching Safety/Security Cable to Mounting Surface

- 3** Attach smaller diameter end of safety cable (**A**) using one 10-16 x 3/4" socket pin wood screw (**B**).
NOTE: Safety cable can be mounted to any secure wood surface.



ENG	Warranty	ESP	Garantía	FRN	Garantie	DEU	Garantie	NEL	Garantie
ITL	Garanzia	CES	Záruka	SLK	Záruka	POR	Garantia	TUR	Garanti

www.peerless-av.com/warranty • www.peerless-av.com • www.peerless-av.com/patents



Peerless-AV
2300 White Oak Circle
Aurora, IL 60502, USA
info@peerless-av.com

(800) 865-2112
(630) 375-5100

Peerless-AV EMEA
Unit 2, Curo Park
Frogmore, St. Albans,
Hertfordshire, AL2 2DD
United Kingdom

+44 (0) 1923 200 100

Peerless-AV B.V.
Papendorpseweg 75
3528 BJ Utrecht
The Netherlands

+31 (0) 70 770 8037

Peerless-AV Latin America
Av. de las Industrias 413
Parque Industrial Escobedo
General Escobedo N.L.,
México 66062

+52 (81) 8384-8300