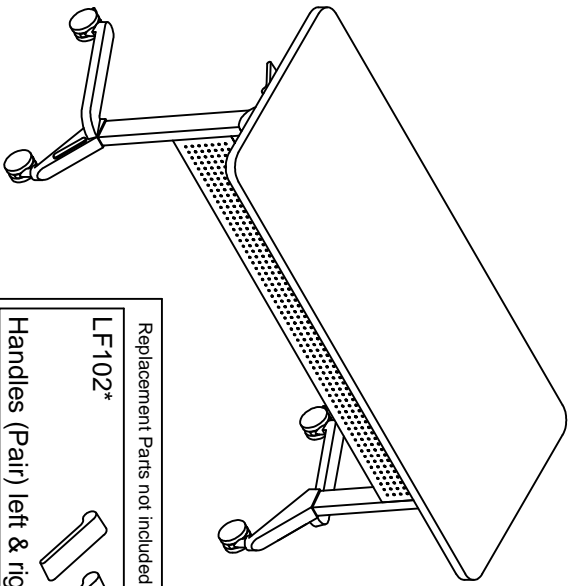


ASSEMBLY INSTRUCTIONS

FLIP-N-GO TABLES



Leveling Tool upon Request:	
Q642* Wrench, Spanner	Quantity 1

Replacement Parts not included in assembly		Quantity
LF102*		1
Handles (Pair) left & right		1
LF103*		1
Springs (Pair) left & right		1
LF104*		1
Caster (single)		1
LF105*		1
Table Bumpers (2) with Screw		1
LF106*		1
Foot Bumper (single)		1

PARTS LIST FLIP-N-GO TABLES

When ordering components, specific color and/or size information may be required.
Contact a Mayline Customer Service Representative: 1-800-822-8037

* Individual Items, Order by part number.

** Denotes Color Code

--Denotes Size

NOTE: Please count and inspect all pieces before disposing of any carton or packing materials.

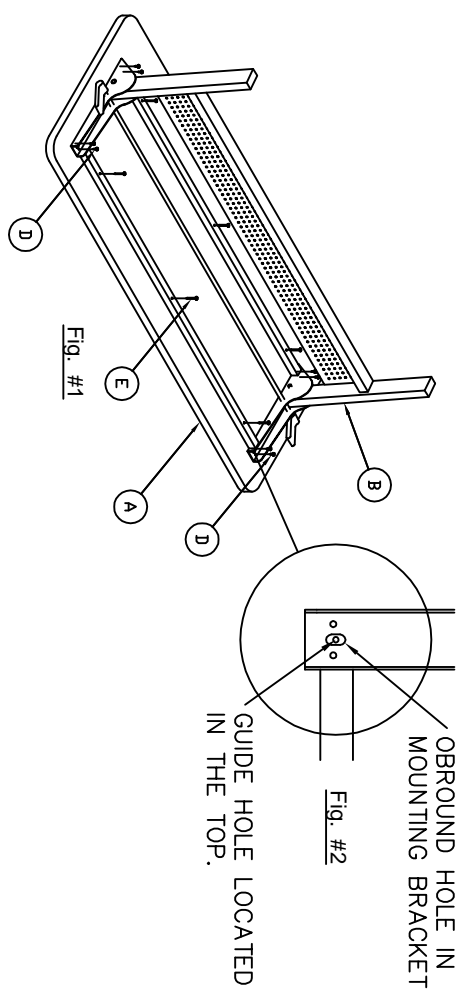
Reference Letter	Quantity
A Part Number Top CALL ~~~** 	1
B Reference Letter Part Number Frame CALL ~~~ 	1
C Reference Letter Part Number LF101* Feet (pair) with casters 	1

Part Number	Quantity	Extra
LF100* Hardware Bag		
Reference Letter	Quantity	Extra
D Screw ST4 x 16mm 	8	1
Reference Letter	Quantity	Extra
E Screw ST4 x 40mm 	6	1
Reference Letter	Quantity	Extra
F Screw M10 x 30mm 	4	
Reference Letter	Quantity	Extra
G Lock Washer 	4	
Reference Letter	Quantity	Extra
H Washer 	4	
Reference Letter	Quantity	Extra
J Allen Wrench 	1	

Part Number 10GA* Ganging Kit	Quantity	Reference Letter	Quantity
Reference Letter	4	K Knob 	2
		L Bracket 	

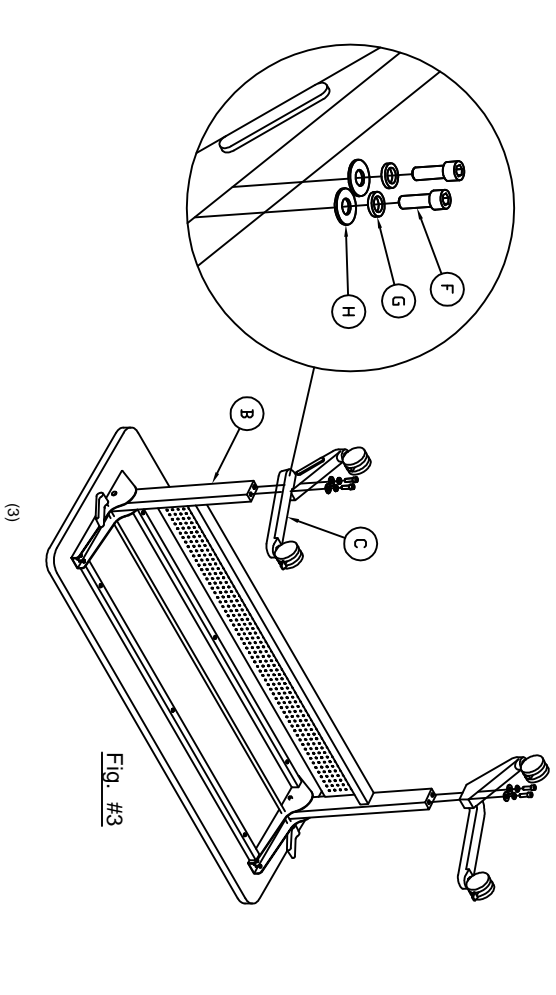
1. Place Top (A) face down on a clean flat surface. Locate guide hole in top and place the Frame as shown in Fig. #1. Center the obround hole in the top mounting bracket of the Frame with the guide hole in the Top. See Fig. #2.

2. Attach Frame (B) onto Top using 8 Screws (D) for the mounting brackets & 6 Screws (E) for cross bars. See Fig. #1

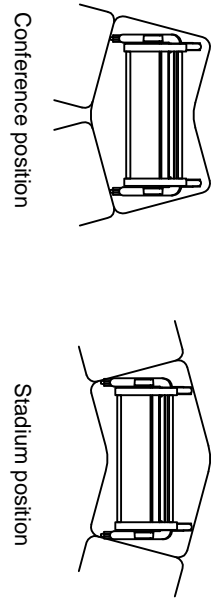


3. Attach Feet (C) to Frame (B) using 2 Screws (F), 2 Lock washers (G) & 2 Washers (H) per Leg as shown in Fig. #3

Tip: When tightening the leg, line up the leg with the side of the table.

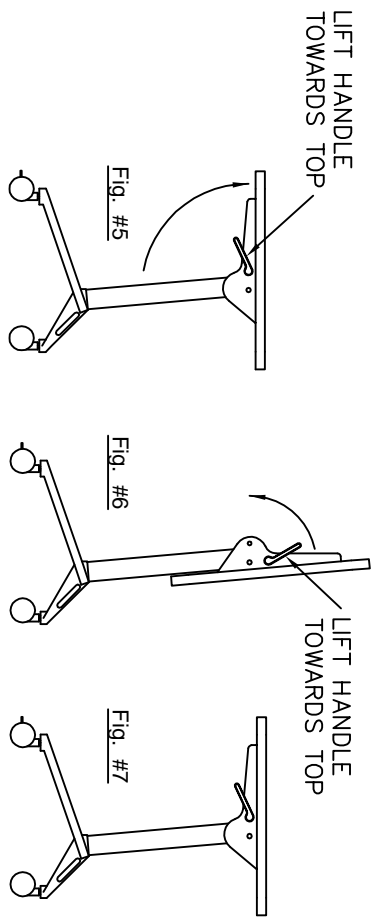


ITALIANSUMI | Table Assembly Unit (Conference vs. Stadium)
Note: Modesty Panel location has two options for assembly.
 1. Begin Assembly by determining if the table will be used as Conference or Stadium position. See Fig. #4
 2. Follow Instructions on page 3, Steps 1 - 3



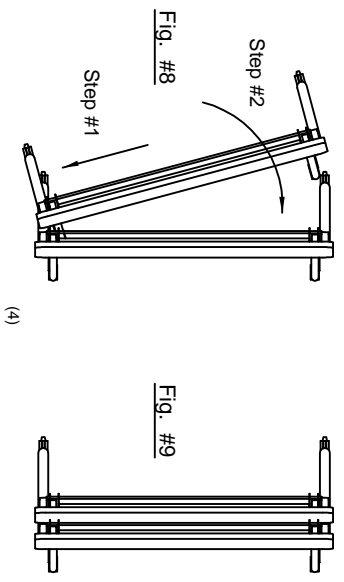
FOLDING OPERATION

Flip top up.
 Rotate handle towards top to release locking mechanism and rotate top up.
 Flip top down.
 Rotate handle towards top to release locking mechanism and rotate top down.



NESTING OPERATION

Place tables as shown in Fig. #7 with one side nested. Rotate other side into nested position.



5. Attach Ganging Brackets with tables in upright & approximate position. Insert Knobs (K) through the Ganging Brackets (L) into the metal Inserts in the Top and tighten as shown in Fig #10 & #11

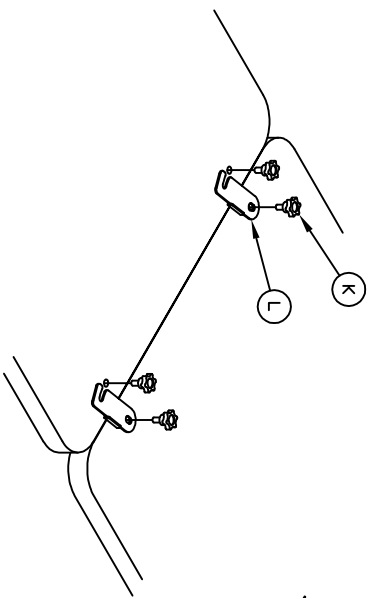


Fig. #10

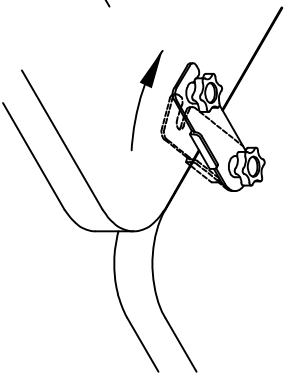


Fig. #11