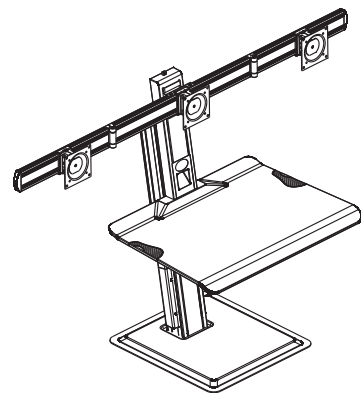


LLR03167

Deluxe work station with USB Port

Assembly Manual



Monitor arms included to hold 1x 32", 2x 27" or 3x 24"
Weight Rating: 2-11kg / 4.4 -24.lbs
VESA: 75 x 75, 100 x 100mm

IMPORTANT SAFETY INSTRUCTIONS

When using the LLR03167, the following precautions should be followed, Read all instructions before use.

- Close supervision is necessary if / when being used by children
- Do not operate if this product is damaged
- Do not exceed weight rating
- For safe installation, the surface you are placing the unit on must support minimum 3 times the weight of the total load
- This product contains moving parts, please use caution
- The manufacturer / importer disclaims any liability for the modification, improper installation, or installation over the specified weight range. The manufacturer / importer will not be liable for any damages arising from the use of, or inability to use the product

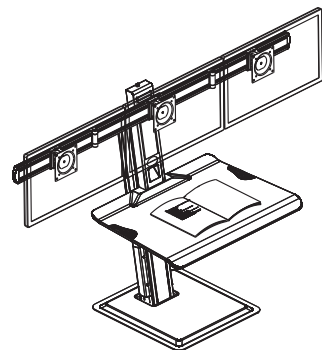
Symbols and meanings

	Tightening Direction		Loosening Direction		+ : Torque increased
	- : Torque reduced		+ : Torque increased		- : Torque reduced
	Phillips Screwdriver		By Hand		Hex Wrench
	Open-End Wrench		Pencil		Reminder
	Adjustment		Hand Drill		Star Wrench
	Remove		Star Wrench		Star Wrench

Working Load Capacity Table

"WARNING" – Risk of injury please do not exceed weight rating below.

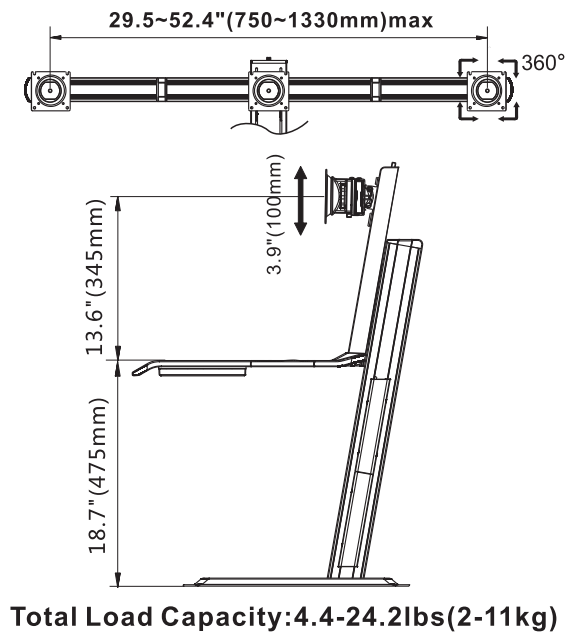
NO.	Monitor Weight (kg/lbs)	Work Surface Weight (kg/lbs)	Total
1	11/24.2	0/0	≤11KG/24.2lbs
2	10/22	1/2.2	
3	9/19.8	2/4.4	
4	8/17.6	3/6.6	
5	7/15.4	4/8.8	
6	6/13.2	5/11.0	
7	5/11.0	6/13.2	
8	4/8.8	7/15.4	
9	3/6.6	8/17.6	
10	2/4.4	9/19.8	



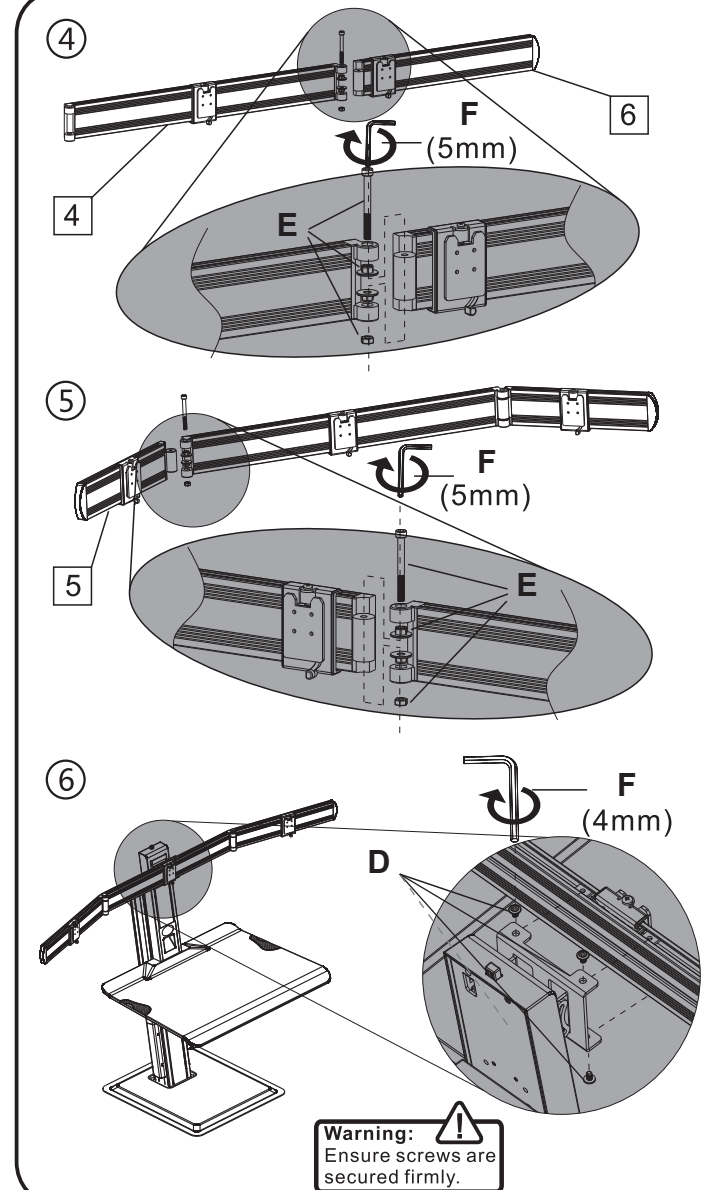
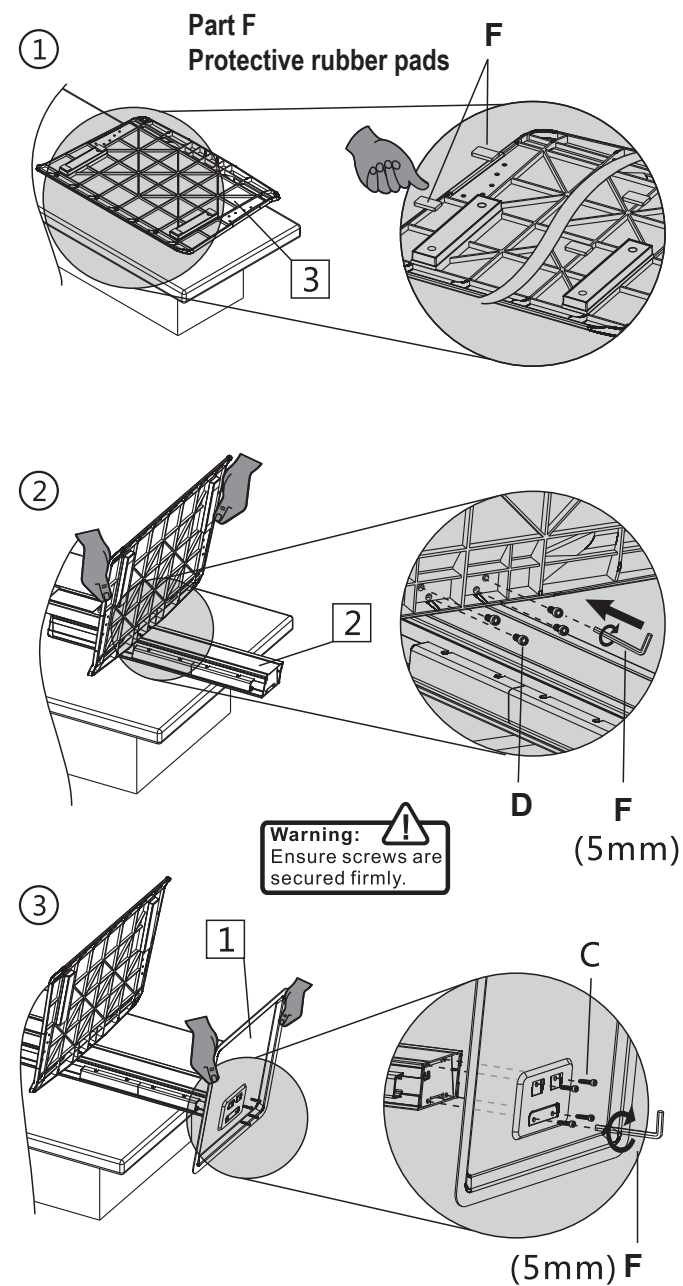
Parts list

1	2	3	4	5	6	7	8	9	10
				Left	Right	3x	8 x Tie Straps	2 x Cable Hose	4 x Cable Clip
A	B	C	F						
12 M4X12	12 M5X12	4X M6X30	4x Rubber Pads						
D	D	F							
4X M5X10	4X M6X12	1x 4mm	1x 5mm						
2x M6x60	4x	2x							

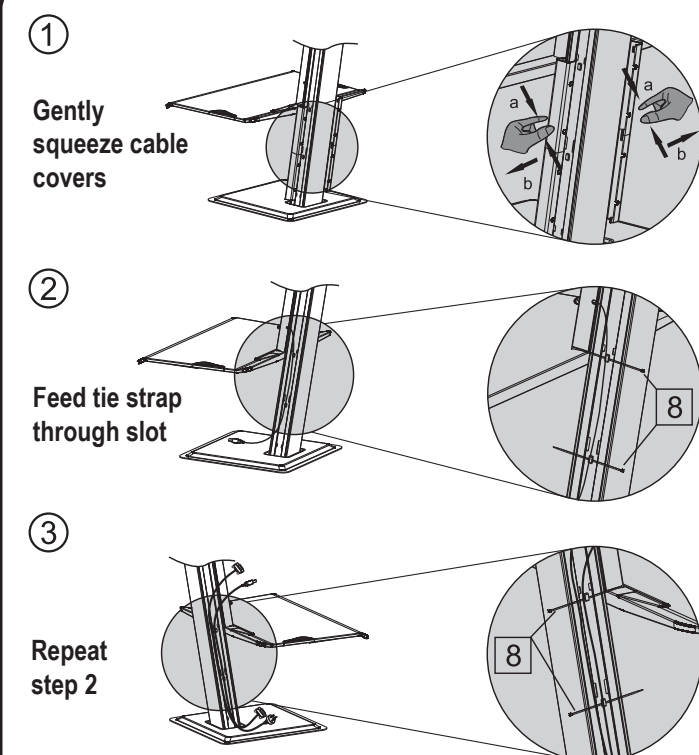
A. Full adjustment post installation

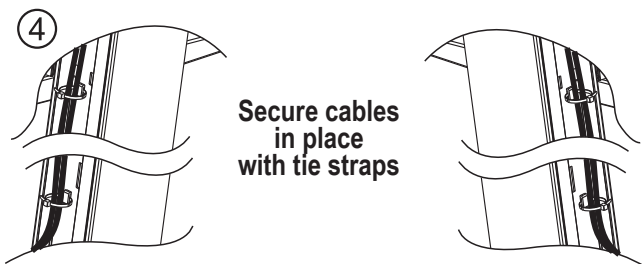


B. Installation (2 persons required)



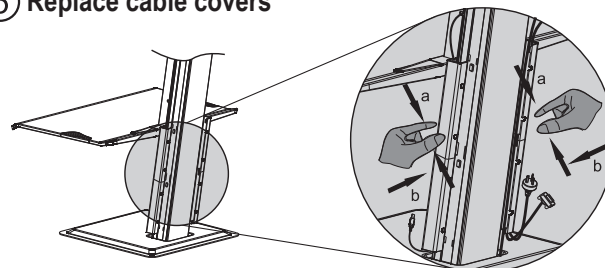
C. Cable Management





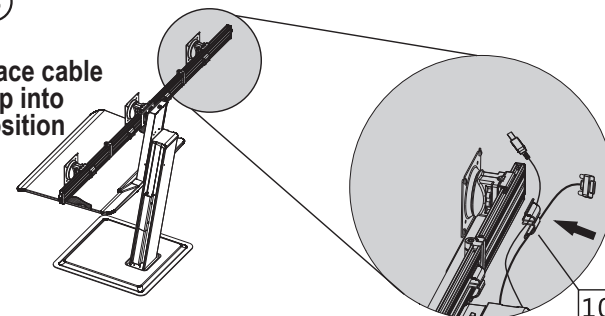
Secure cables
in place
with tie straps

⑤ Replace cable covers



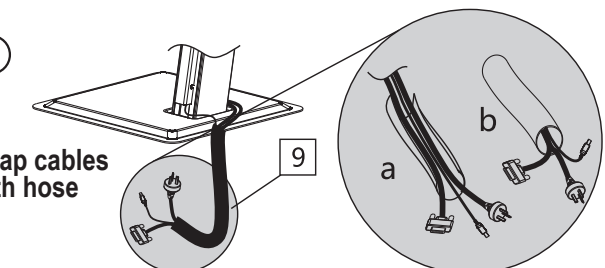
⑥

Place cable
clip into
position

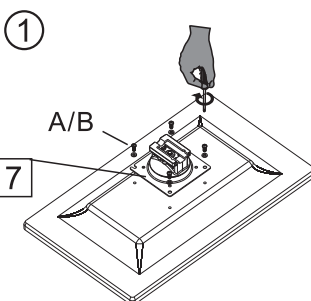


⑦

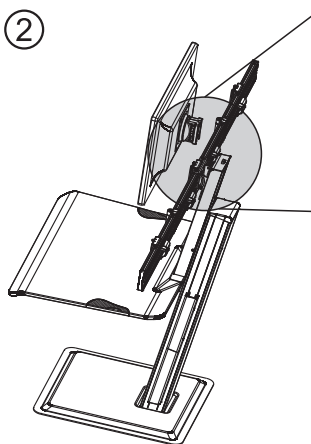
Wrap cables
with hose



D. Monitor Installation (2 persons required)

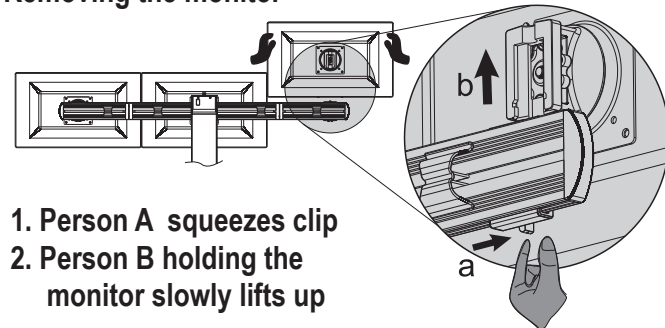


Warning:
Ensure screws are
secured firmly.



Attention:
The pre-set
tension is at the
minimum

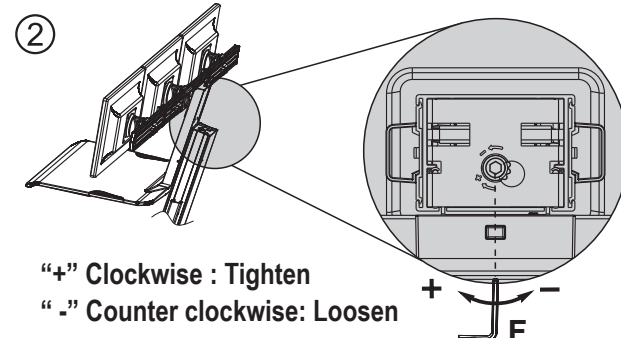
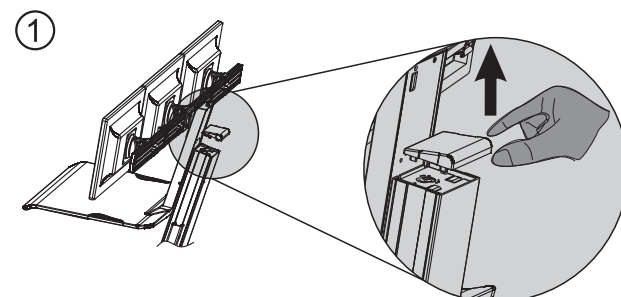
Removing the monitor



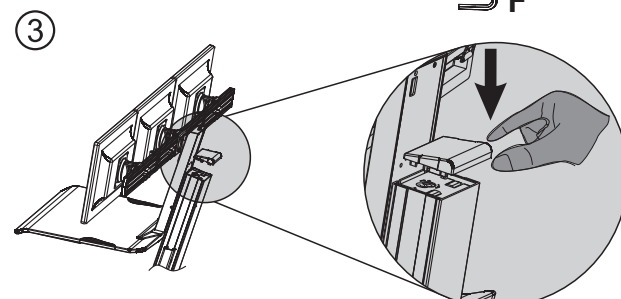
1. Person A squeezes clip
2. Person B holding the monitor slowly lifts up

E. Tension adjustment

"+" increase. "-" decrease



"+" Clockwise : Tighten
"-" Counter clockwise: Loosen

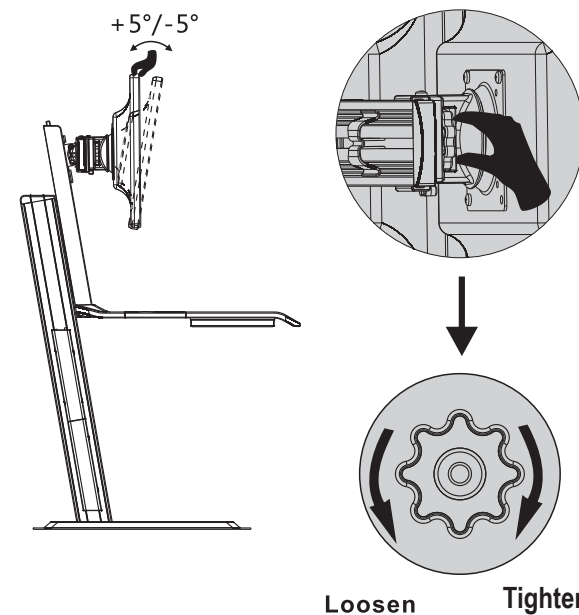


! Ensure load capacity is within
2-11kg / 4.4 / 24.2lbs

A. If work surface with equipment can
stay in position at any height along the
slide, no adjustment required.

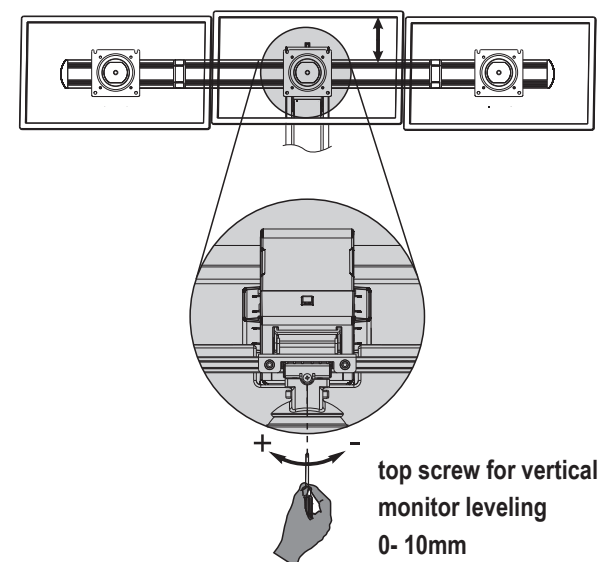
B. If works surface with equipment can
not stay in position at any height along
the slide. Please see step 1- 3 for
tension adjustment. Use part G "5mm"
Allen key.

F. Tilt Angle Adjustment (2 persons required)



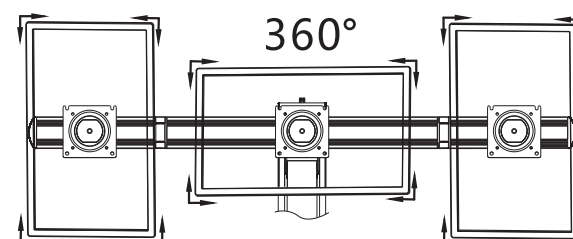
1. Person A holds the monitor with both hands
2. Person B loosens the thumb wheel by turning counter clockwise
3. Person A adjusts to the desired angle (within + 5)
4. Person B tightens the thumb wheel by turning clockwise

G. Vertical Monitor Alignment

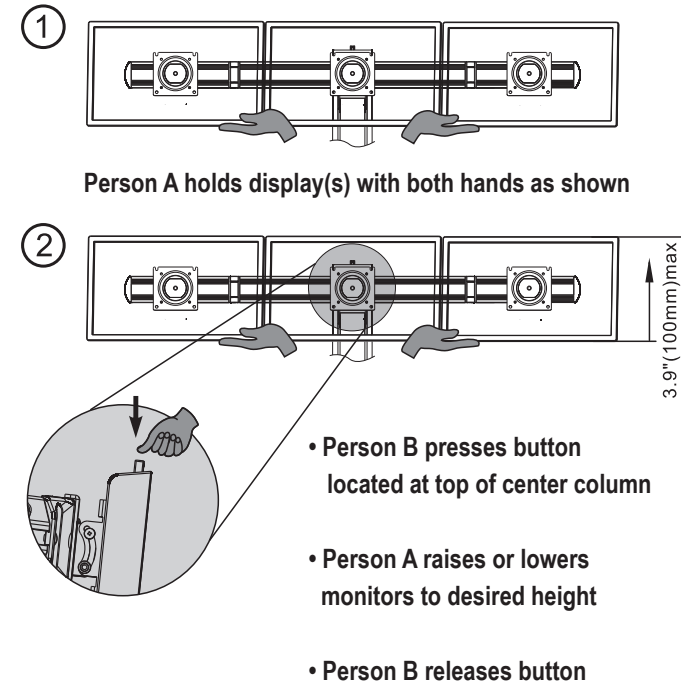


"+" Clockwise: to raise
"-" Counter clockwise: to lower

H.Display Rotation



I. Complete Vertical Height Adjustment (2 persons required)



Person A holds display(s) with both hands as shown

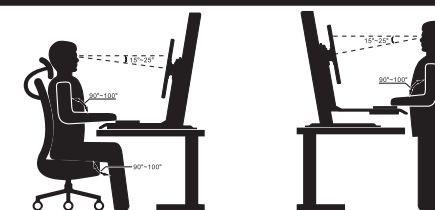
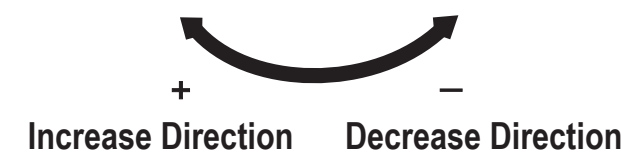
- Person B presses button located at top of center column
- Person A raises or lowers monitors to desired height
- Person B releases button

Tension Adjustment After Assembly



Warning

1. Ensure monitors are secured
2. Ensure load capacity is within 2-11kg / 4.4 / 24.2lbs
3. Ensure all screws are secured firmly



Instructions

CALL US FIRST! DO NOT RETURN TO STORE.

For immediate help with assembly or product information call our toll-free number:
1-888-598-7316 Mon - Fri 7am to 7pm CST. Our staff is ready to provide assistance.
Damaged or missing parts ship from our facility in 1-2 business days.

Please provide the following information:

1. Full Name
2. Physical Address - do not include P.O. Box as our carrier cannot deliver to P.O. Boxes
3. Phone Number
4. Model Number
5. Part Number
6. Invoice Number
7. Date of purchase

Note: our policy is to send all parts requests via normal ground transportation. If your requirements are to have these parts via overnight/ next day, please provide your designated carrier and account number. Replacement panels are not available. If any damage has occurred during shipment please return the entire unit to place of purchase for credit and replacement. Original invoice may be required