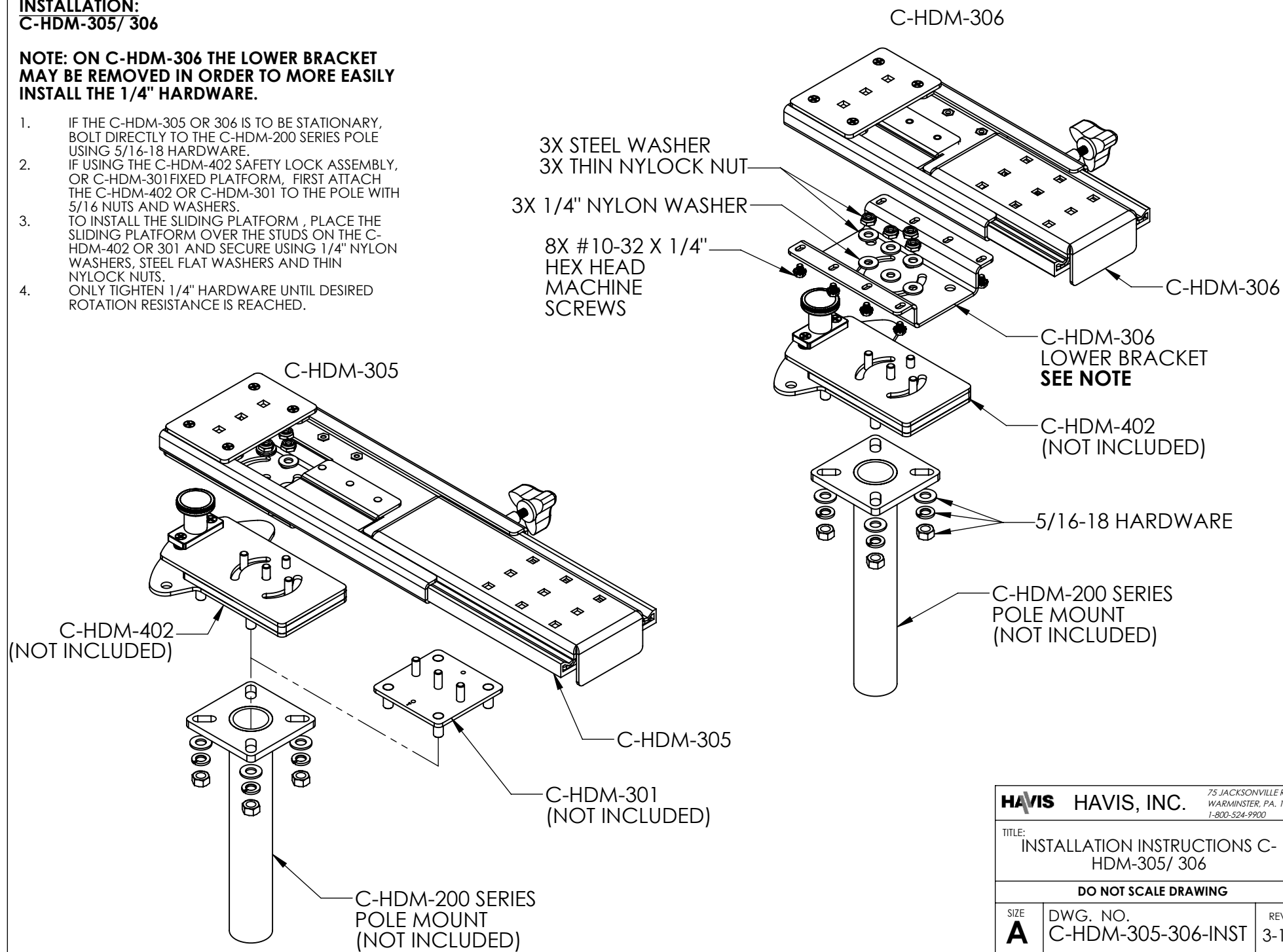


INSTALLATION:
C-HDM-305/ 306

NOTE: ON C-HDM-306 THE LOWER BRACKET MAY BE REMOVED IN ORDER TO MORE EASILY INSTALL THE 1/4" HARDWARE.

1. IF THE C-HDM-305 OR 306 IS TO BE STATIONARY, BOLT DIRECTLY TO THE C-HDM-200 SERIES POLE USING 5/16-18 HARDWARE.
2. IF USING THE C-HDM-402 SAFETY LOCK ASSEMBLY, OR C-HDM-301 FIXED PLATFORM, FIRST ATTACH THE C-HDM-402 OR C-HDM-301 TO THE POLE WITH 5/16 NUTS AND WASHERS.
3. TO INSTALL THE SLIDING PLATFORM, PLACE THE SLIDING PLATFORM OVER THE STUDS ON THE C-HDM-402 OR 301 AND SECURE USING 1/4" NYLON WASHERS, STEEL FLAT WASHERS AND THIN NYLOCK NUTS.
4. ONLY TIGHTEN 1/4" HARDWARE UNTIL DESIRED ROTATION RESISTANCE IS REACHED.



HAVIS HAVIS, INC.		75 JACKSONVILLE RD. WARMINSTER, PA. 18974 1-800-524-9900
TITLE: INSTALLATION INSTRUCTIONS C- HDM-305/ 306		
DO NOT SCALE DRAWING		
SIZE A	DWG. NO. C-HDM-305-306-INST	REV 3-14
WEIGHT (LB): 7.79	SCALE: 1:4	SHEET 1 OF 1