



Product End-of-Life Disassembly Instructions

Product Category: Notebooks

Marketing Name / Model

[List multiple models if applicable.]

HP EliteBook 860 16 inch G11 Notebook PC

HP EliteBook 860 G11

HP ZBook Firefly 16 inch G11 Mobile Workstation PC

HP ZBook Firefly 16 G11

Purpose: The document is intended for use by end-of-life recyclers or treatment facilities. It provides the basic instructions for the disassembly of HP Inc. products to remove components and materials requiring selective treatment, as defined by EU directive 2012/19/EC, Waste Electrical and Electronic Equipment (WEEE).

NOTE: Recyclers should sort plastic materials into resin streams for recycling based on the ISO 11469 plastic marking code on the plastic part. For any questions on plastic marking or identification of location of parts or components requiring selective treatment, please contact [HP's Sustainability Contact](#).

1.0 Items Requiring Selective Treatment

1.1 Items listed below are classified as requiring selective treatment. An "X" in the list of components and parts indicates the product contains the component or part requiring selective treatment

Item Description	Components and parts requiring selective treatments	Quantity of items included in product
Printed Circuit Boards (PCB) or Printed Circuit Assemblies (PCA) with a surface greater than 10 sq cm	<input checked="" type="checkbox"/> Main board (MB) PCB <input checked="" type="checkbox"/> Solid state drive (SSD) PCB <input checked="" type="checkbox"/> Wireless WAN module (WWAN) PCB <input type="checkbox"/> Touch module PCB <input checked="" type="checkbox"/> Power supply PCB <input type="checkbox"/> External Keyboard (KB) <input type="checkbox"/> External Mouse <input checked="" type="checkbox"/> Others: <u>I/O Board PCA, Touch Pad PCA, Smart Card</u>	7
Batteries, excluding Li-Ion batteries. This includes standard alkaline, coin or button style batteries	<input checked="" type="checkbox"/> RTC/CMOS battery <input type="checkbox"/> Others: _____	1
Li-Ion batteries. Includes all Li-Ion batteries if more than one is provided with the product (such as a detachable notebook keyboard battery, etc.)	Li-ion battery(ies) are attached to the product by: <input checked="" type="checkbox"/> screws <input type="checkbox"/> snaps <input type="checkbox"/> adhesive <input type="checkbox"/> other. Explain _____	1
Mercury-containing components. For example, mercury in lamps, display backlights, scanner lamps, switches, batteries		0

Item Description	Components and parts requiring selective treatments	Quantity of items included in product
Liquid Crystal Displays (LCD) with a surface greater than 100 sq cm. Includes background illuminated displays with gas discharge lamps	<input checked="" type="checkbox"/> Panel LCD	1
Cathode Ray Tubes (CRT)		
Capacitors / condensers (Containing PCB/PCT)		
Electrolytic Capacitors / Condensers measuring greater than 2.5 cm in diameter or height	<input type="checkbox"/> Power Supply capacitor(s) or condenser(s)	
External electrical cables and cords	<input checked="" type="checkbox"/> AC power cord <input type="checkbox"/> Audio, video or data cables <input type="checkbox"/> Other: _____	1
Gas Discharge Lamps		
Plastics containing Brominated Flame Retardants (not including external electrical cables and cords, PCBs or PCAs already listed as a separate item above)		
Components and parts containing toner and ink, including liquids, semi-liquids (gel/paste) and toner. Include the cartridges, print heads, tubes, vent chambers, and service stations.		
Components and waste containing asbestos		
Components, parts and materials containing refractory ceramic fibers		
Components, parts and materials containing radioactive substances		
Components containing chlorofluorocarbons (CFC), hydrochlorofluorocarbons (HCFC) or hydrofluorocarbons (HFC), hydrocarbons (HC)		

2.0 Tools Required

List the type and size of the tools that would typically be used to disassemble the product to a point where components and materials requiring selective treatment can be removed.

Tool Description	Tool Size (if applicable)
Screwdriver	#1

3.0 Product Disassembly Process

3.1 List the basic steps that should typically be followed to remove components and materials requiring selective treatment including the required steps to remove the external enclosure.

1. Follow steps described in each operation name of disassembly instruction in 3.2 section.
2. If parts can be removed without using a tool, remove it first
3. Use correct screwdriver and torque value before unlock the screw

EL-MF877-00
Template Revision **D**

Page 2

last updated May-2022

HP Inc. instructions for this template are available at [EL-MF877-01](#)

3.2 Location of components requiring selective treatment. The photos and/or graphics below identify the location of the parts or components requiring selective treatment within the main unit. For End-of-Life product disassembly instructions of external accessories including external power supply (EPS), external keyboard (KB) external mouse and external cables and cords, refer to the following URL: [End-of-Life Product Disassembly Instructions \(hp.com\)](https://www.hp.com/go/end-of-life-product-disassembly-instructions)



Standard Operation Procedure

Document No. : Baymax & Luisa 16 disassembly SOP

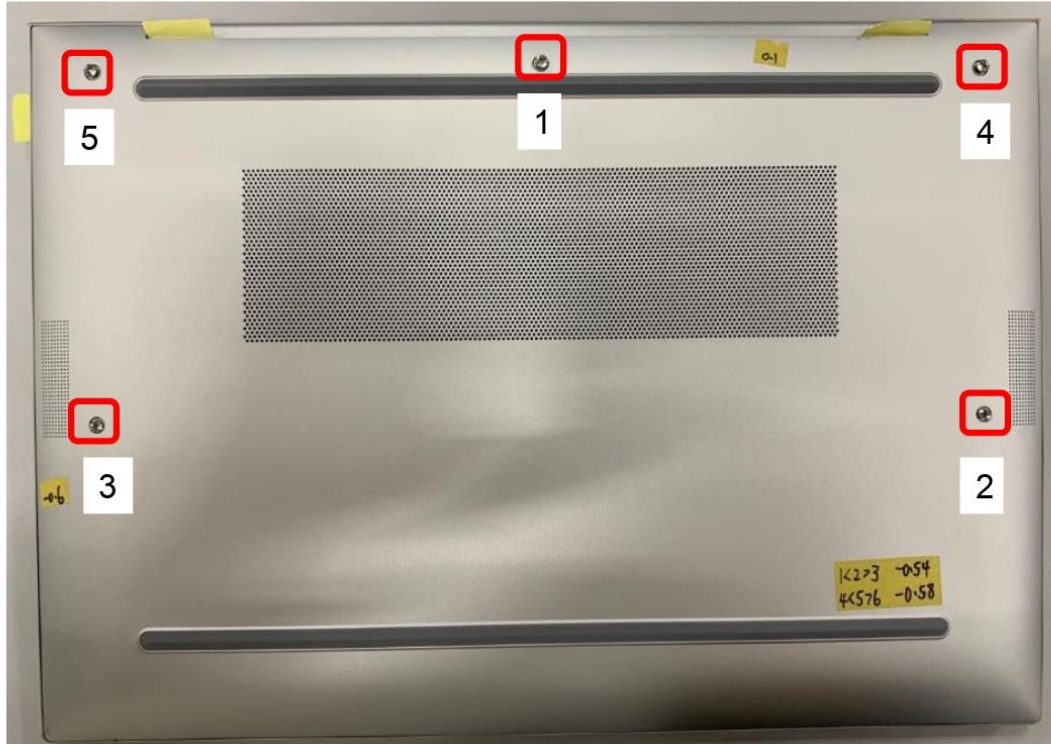
Station : 1(1/1)

Operation name: Release Base screws

Ver. : 1.00 Edit date: 2022/1/4

Step :

1. Loosen Base screw *5pcs as below picture showing.
 - ❖ Torque : 2.5 ± 0.2 kgf.cm
 - ❖ screw can not be slipped.



Notice: Please inform production line leader or master if you found any abnormal..

Fixture list (Spec.)	Qty	Symbol							
Electric screwdriver	1								
		Safe	Quality	Order	Fixture	Hear	Look	manual	Static

Lister : Zhou.Gui-ling Issue Department : : Industrial Engineering Class



Standard Operation Procedure




Document No. : Baymax & Luisa 16 disassembly SOP

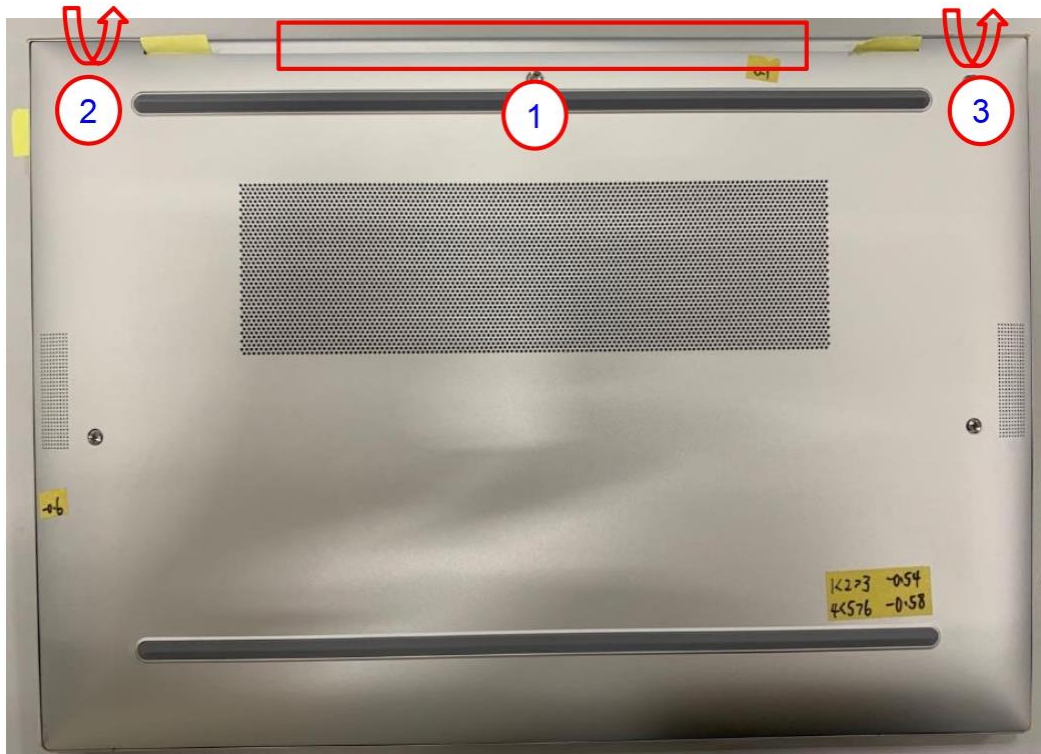
Station : 2(1/1)

Operation name: Disassemble BASE









Ver. : 1.00 Edit date: 2022/1/4

Step :

-  1. Use cable jig to separate Base from unit.
Attention: Insert jig to TOP & Base gap area, then slide jig to separate TOP & Base.
-  2. Put hands on Base and TOP corner area, handle Base lift it up while press TOP down.
-  3. Take away the Base from unit.



Notice: Please inform production line leader or master if you found any abnormal..

Fixture list (Spec.)	Qty	Symbol							
Plastic rods	1								
		Safe	Quality	Order	Fixture	Hear	Look	manual	Static

Lister : Zhou.Gui-ling Issue Department : : Industrial Engineering Class



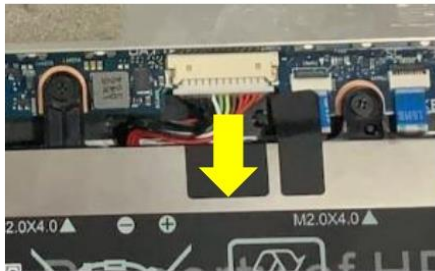
Standard Operation Procedure

Document No. : Baymax & Luisa 16 disassembly SOP

Station : 3(1/1)

Operation name: Disassemble speaker

Ver. : 1.00 Edit date: 2022/1/4

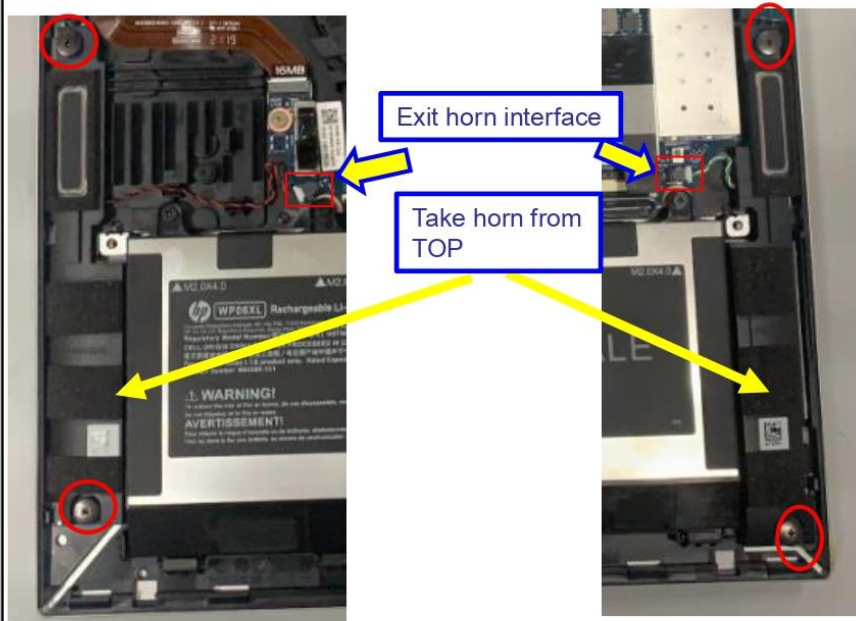


Step :

1. Pullout battery cable from connector as Pic.1.
2. Loosen speaker screw *2pcs as below picture showing
3. Pullout speaker cable from connector as Pic.2
4. Take away L/R speaker from unit.

❖ Torque : 1.5 ± 0.2 kgf.cm

❖ screw can not be slipped.



Notice: Please inform production line leader or master if you found any abnormal..

Fixture list (Spec.)	Qty	Symbol							
		Safe	Quality	Order	Fixture	Hear	Look	manual	Static

Lister : Zhou.Gui-ling Issue Department : : Industrial Engineering Class



Standard Operation Procedure

Document No. : Baymax & Luisa 16 disassembly SOP

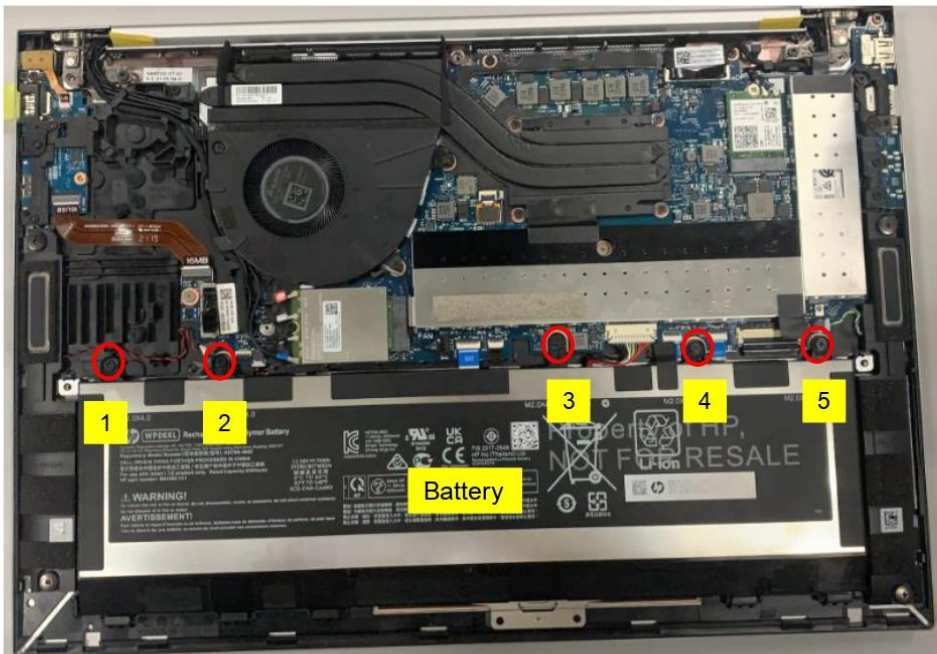
Station : 4(1/2)

Operation name: Disassemble battery

Ver. : 1.00 Edit date: 2022/1/4

Step :

1. Loosen Battery screw *5pcs as below picture showing. (6052B0081901) *4pcs
 ❖ Torque : 1.5 ± 0.2 kgf.cm
 ❖ screw can not be slipped.
2. Take out battery from unit.



Notice: Please inform production line leader or master if you found any abnormal..

Fixture list (Spec.)	Qty	Symbol							
Electric screwdriver	1								
		Safe	Quality	Order	Fixture	Hear	Look	manual	Static

Lister : Zhou.Gui-ling Issue Department : : Industrial Engineering Class



Standard Operation Procedure

Document No. : Baymax & Luisa 16 disassembly SOP

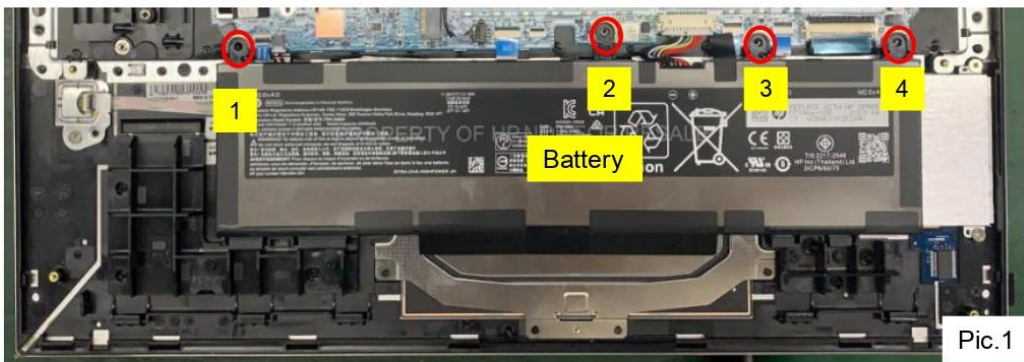
Station : 4(2/2)

Operation name: Take down battery

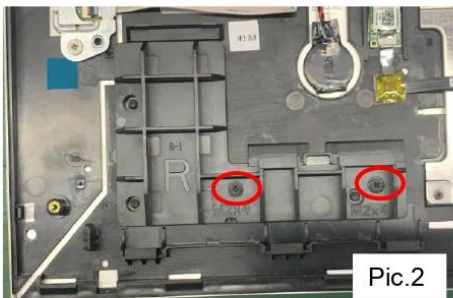
Ver. : 1.00 Edit date: 2022/1/4

Step :

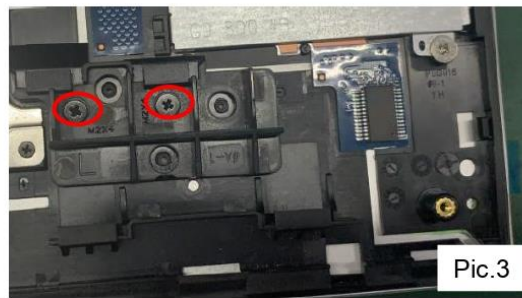
1. Loosen Battery screw *4pcs as below picture showing. (6052B0081901) *4 .Pic.1
 - ❖ Torque : 1.5 ± 0.2 kgf.cm
 - ❖ screw can not be slipped.
2. Loosen frame screw*4 , Pic.2/3
 - ❖ Torque : 1.5 ± 0.2 kgf.cm
 - ❖ screw can not be slipped.
3. Take out battery & Frame from unit.



Pic.1



Pic.2



Pic.3

Notice: Please inform production line leader or master if you found any abnormal..

Fixture list (Spec.)	Qty	Symbol							
Electric screwdriver	1								
		Safe	Quality	Order	Fixture	Hear	Look	manual	Static

Lister : Zhou.Gui-ling Issue Department : : Industrial Engineering Class



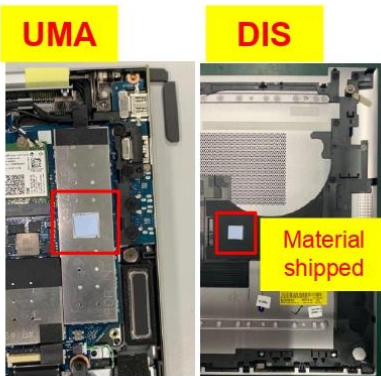
Standard Operation Procedure

Document No. : Baymax & Luisa 16 disassembly SOP

Station : 5(1/1)

Operation name: Disassemble Shielding Can

Ver. : 1.00 Edit date: 2022/1/4



Pic. 1

Step : For WWAN SKU

1. Take down SSD thermal pad (6054B1159301 *1) (picture 1)
thermal grease on the corresponding position of base
2. Take down DDR&SSD shielding can (picture 2)

Disassemble (SSD) PCB



Pic. 2

Notice: Please inform production line leader or master if you found any abnormal..

Fixture list (Spec.)	Qty	Symbol							
		Safe	Quality	Order	Fixture	Hear	Look	manual	Static

Lister : Zhou.Gui-ling Issue Department : : Industrial Engineering Class



Standard Operation Procedure

Document No. : Baymax & Luisa 16 disassembly SOP

Station : 6(1/1)

Operation name: Take down DDR/EDP cable/WLAN cable

Ver. : 1.00

Edit date: 2022/1/4

Pic.1

Step :

- 1.Take down EDP cable (Pic1 、 Pic2)
- 2.Take down WLAN cable (Pic3)
- 3.Take down DDR (Pic4)

Pic.2

Pic.3

Pic.4

Notice: Please inform production line leader or master if you found any abnormal..

Fixture list (Spec.)	Qty	Symbol							
		Safe	Quality	Order	Fixture	Hear	Look	manual	Static

Lister : Zhou.Gui-ling Issue Department : : Industrial Engineering Class



Standard Operation Procedure

Document No. : Baymax & Luisa 16 disassembly SOP

Station : 7(1/1)

Operation name: Take down WWAN Antenna Cable Ver. : 1.00 Edit date : 2022/1/4

Step :

- 1. Take down WWAN Antenna Cable

Disassemble (WWAN) PCB



Long card

Short card

Pic.1

Notice: Please inform production line leader or master if you found any abnormal..

Fixture list (Spec.)	Qty	Symbol							
		Safe	Quality	Order	Fixture	Hear	Look	manual	Static

Lister : Zhou.Gui-ling Issue Department : : Industrial Engineering Class



Standard Operation Procedure

Document No. : Baymax & Luisa 16 disassembly SOP

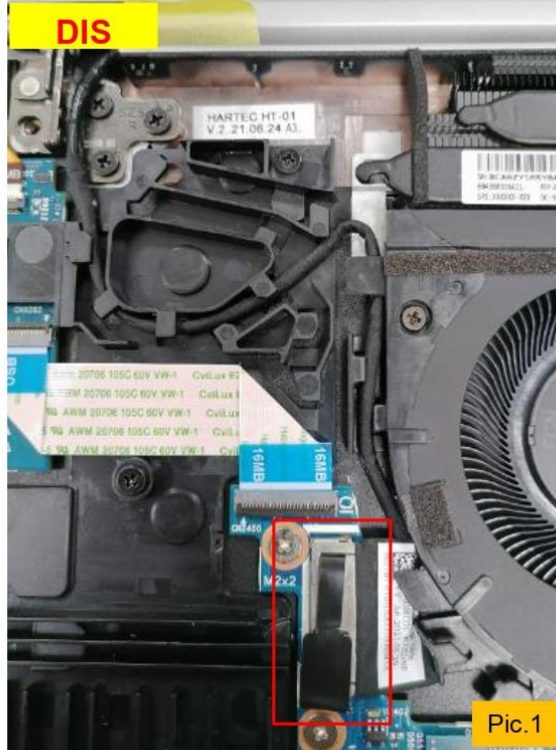
Station : 8(1/1)

Operation name: Take down Camera Cable

Ver. : 1.00 Edit date : 2022/1/4

Step :

- 1. Take down EDP cable(pic.1)
 - ◆ Frist take down the CNTR



Notice: Please inform production line leader or master if you found any abnormal..

Fixture list (Spec.)	Qty	Symbol							
		Safe	Quality	Order	Fixture	Hear	Look	manual	Static

Lister : Zhou.Gui-ling Issue Department : : Industrial Engineering Class



Standard Operation Procedure

Document No. : Baymax & Luisa 16 disassembly SOP

Station : 9 (1/1)

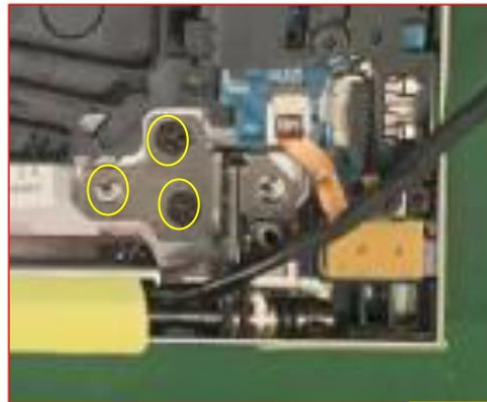
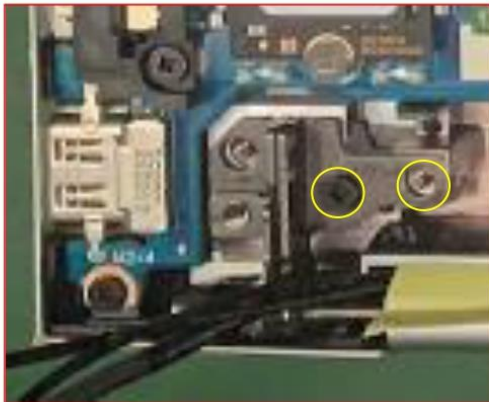
Operation name: Take down hinge screw from C part Ver. : 1.00 Edit date : 2022/1/4



Pic.1

Step :

1. Open LCD to 160 degree. (Pic1)
2. Loosen Hinge screw *5pcs and disassembly Base unit to separate hinge up and Base unit. (Pic2)
 - ❖ Torque : 3.0 ± 0.2 kgf.cm
 - ❖ screw can not be slipped.
3. Take down hinge up



Pic.2

Notice: Please inform production line leader or master if you found any abnormal..

Fixture list (Spec.)	Qty	Symbol							
Electric screwdriver	1								
Support jig	1	Safe	Quality	Order	Fixture	Hear	Look	manual	Static

Lister : Zhou.Gui-ling Issue Department : : Industrial Engineering Class



Standard Operation Procedure

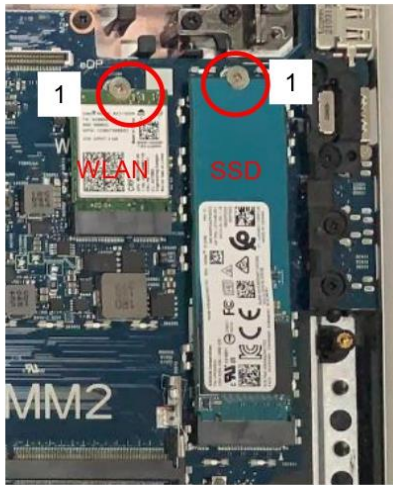
Document No. : Baymax & Luisa 16 disassembly SOP

Station : 10 (1/1)

Operation name: Take down SSD/WLAN/WWAN card Ver. : 1.00 Edit date : 2022/1/4

Step :

1. Take down screw *3 (Pic1)
 - ❖ Torque : 1.5 ± 0.2 kgf.cm
 - ❖ screw can not be slipped
2. Take down SSD/WLAN/WWAN card (Pic1 & Pic2)



pic.1



Pic.2

Notice: Please inform production line leader or master if you found any abnormal..

Fixture list (Spec.)	Qty	Symbol							
Electric screwdriver	1								
		Safe	Quality	Order	Fixture	Hear	Look	manual	Static

Lister : Zhou.Gui-ling Issue Department : : Industrial Engineering Class



Standard Operation Procedure

Document No. : Baymax & Luisa 16 disassembly SOP

Station : 11 (1/1)

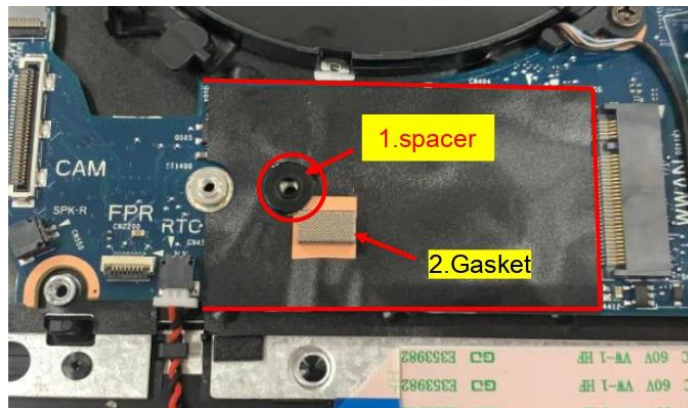
Operation name: Take down short mylar/SSD thermal pad Ver. : 1.00 Edit date: 2022/1/4

Step :

1. Take down thermal pad (6054B1159301 *1)
For WWAN SKU
2. Take down short circuit mylar (6054B2406701) &Gasket (6054B1458301)
3. Take down spacer (6051B1504201) for WWAN short card



Thermal pad



1.spacer

2.Gasket

Notice: Please inform production line leader or master if you found any abnormal..

Fixture list (Spec.)	Qty	Symbol							
		Safe	Quality	Order	Fixture	Hear	Look	manual	Static

Lister : Zhou.Gui-ling Issue Department : : Industrial Engineering Class






Standard Operation Procedure

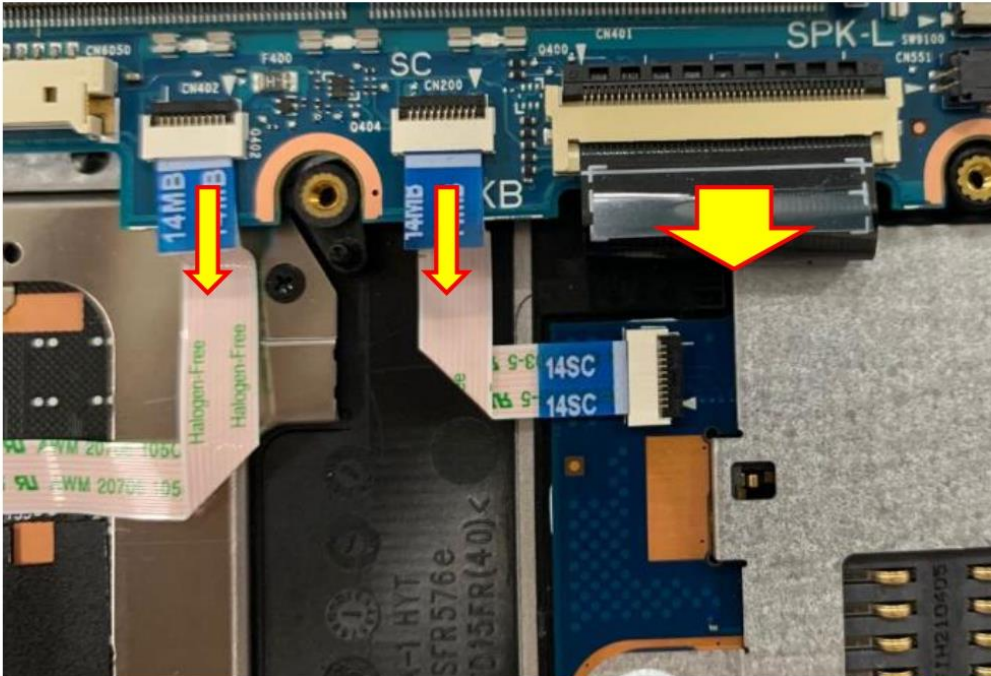
Document No. : Baymax & Luisa 16 disassembly SOP

Station : 12(1/1)

Operation name: Take down Click pad/Smart card/KB FFC Ver. : 1.00 Edit date: 2022/1/4









Step :

-  1. Take down Click pad FFC (pic.1)
-  2. Take down Smart Card FFC (pic.1)
-  3. Take down K/B FFC (pic.1)



Pic.1

Notice: Please inform production line leader or master if you found any abnormal..

Fixture list (Spec.)	Qty	Symbol							
									
		Safe	Quality	Order	Fixture	Hear	Look	manual	Static

Lister : Zhou.Gui-ling Issue Department : : Industrial Engineering Class



Standard Operation Procedure

Document No. : Baymax & Luisa 16 disassembly SOP

Station : 13(1/1)

Operation name: Take down FR/NFC FFC/K/B B/L FFC Ver. : 1.00 Edit date: 2022/1/4

Pic.1

Step :

- ✎ 1. Take down Finger print FFC (optional) (pic.1)
- ✎ 2. Take down NFC FFC (optional) and battery (pic.2)
- ✎ 3. Take down K/B B/L FFC (optional) (pic.2)

Pic.2

Notice: Please inform production line leader or master if you found any abnormal..

Fixture list (Spec.)	Qty	Symbol							
		Safe	Qual ity	Order	Fixtu re	Hear	Look	manual	Static

Lister : Zhou.Gui-ling Issue Department : : Industrial Engineering Class



Standard Operation Procedure

Document No. : Baymax & Luisa 16 disassembly SOP

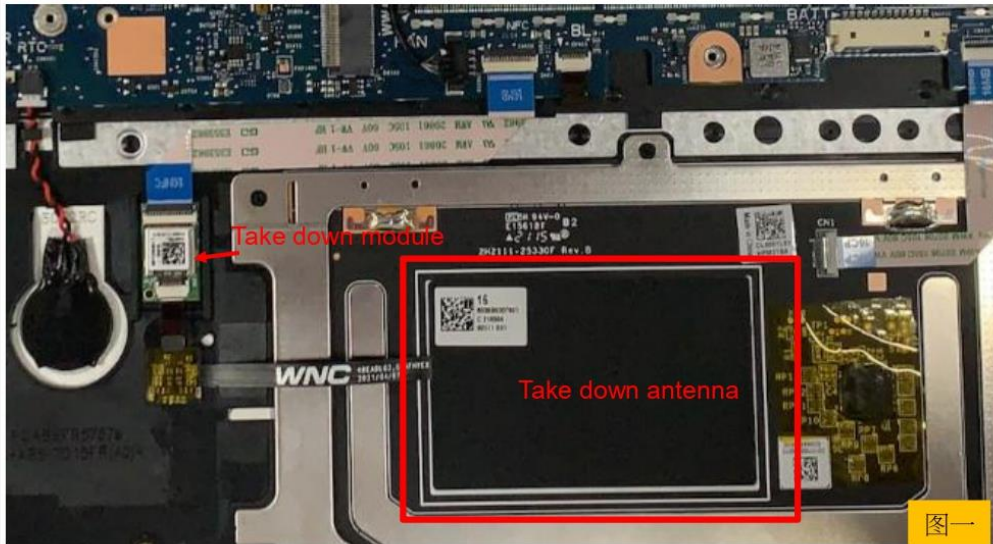
Station : 14(1/1)

Operation name: Take down NFC module

Ver. : 1.00 Edit date: 2022/1/4

1. Take down NFC Module PCB and antenna (pic.1)

- ◆ CNTR can not pull drag
- ◆ NFC antenna can not pull drag



Notice: Please inform production line leader or master if you found any abnormal..

Fixture list (Spec.)	Qty	Symbol							
		Safe	Quality	Order	Fixture	Hear	Look	manual	Static

Lister : Zhou.Gui-ling Issue Department : : Industrial Engineering Class

EL-MF877-00
Template Revision D

Page 19

last updated May-2022

HP Inc. instructions for this template are available at [EL-MF877-01](#)



Standard Operation Procedure



Document No. : Baymax & Luisa 16 disassembly SOP

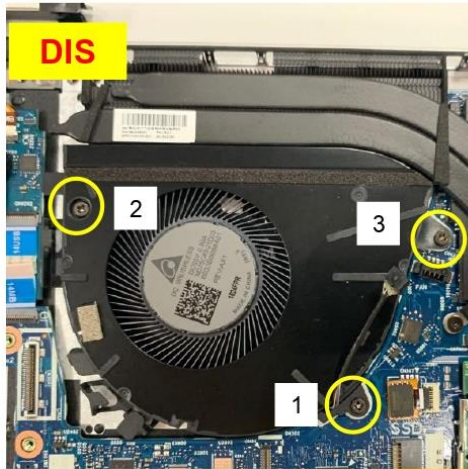
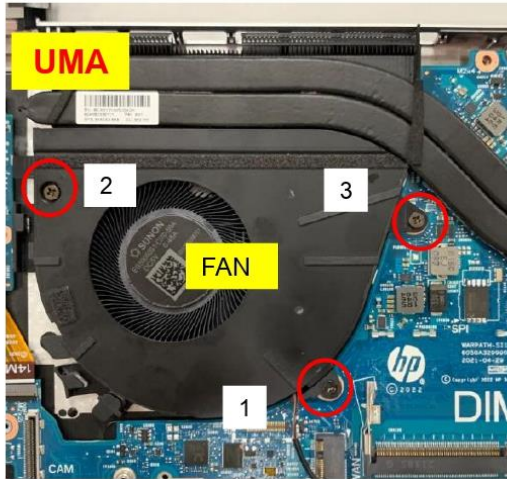
Station : 15(1/1)

Operation name: Take down FAN screw

Ver. : 1.00 Edit date: 2022/1/4

Step :

-  1 take down FAN Screw (SET) * 3 (Pic1)
❖ screw can not be slipped ; Torque : $1.5 \pm 0.2\text{Kgf} \cdot \text{Cm}$
-  2 take down FAN connector (pic2)











Pic.1



Pic.2

Notice: Please inform production line leader or master if you found any abnormal..

Fixture list (Spec.)	Qty	Symbol							
Electric screwdriver	1								
		Safe	Quality	Order	Fixture	Hear	Look	manual	Static

Lister : Zhou.Gui-ling Issue Department : : Industrial Engineering Class



Standard Operation Procedure

Document No. : Baymax & Luisa 16 disassembly SOP

Station : 16(1/1)

Operation name: Take down I/O Frame screw

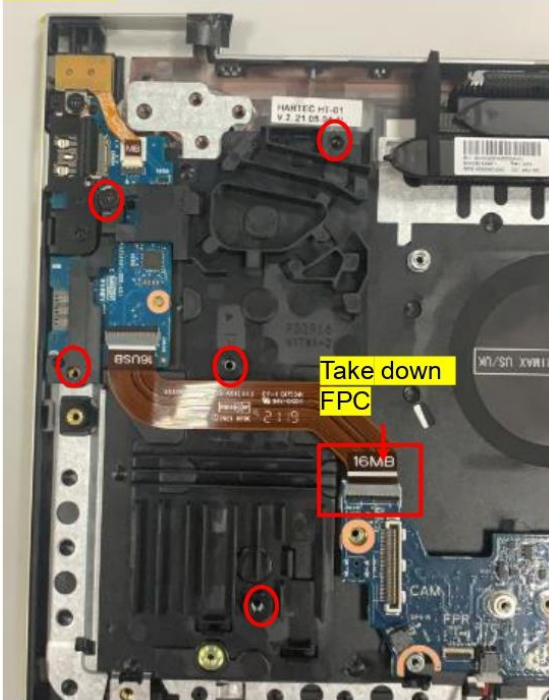
Ver. : 1.00 Edit date: 2022/1/4

Step :

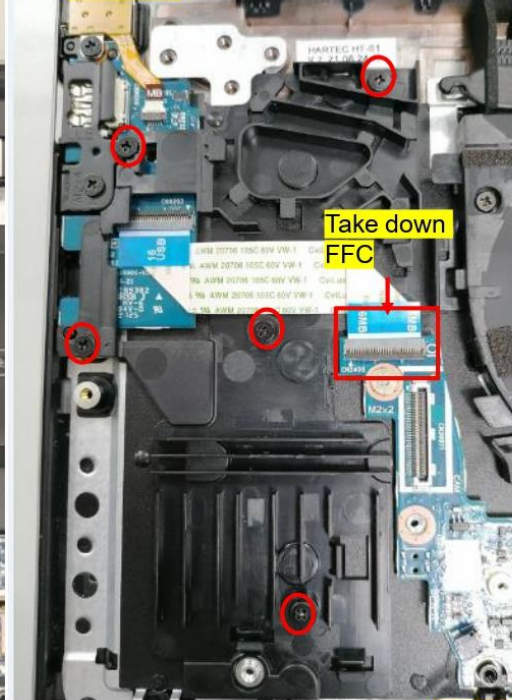
1. Take down I/O Frame screw *5pcs (pic.1)
 - ❖ screw can not be slipped ; Torque : 1.5 ± 0.2Kgf · Cm
 - ❖ M2x4L (6052B0081901)
2. Take down FFC CNTR from M/B and take down I/O frame

Disassemble I/O Board PCA

UMA



DIS



PIC.1

Notice: Please inform production line leader or master if you found any abnormal..

Fixture list (Spec.)	Qty	Symbol							
Electric screwdriver	1								
		Safe	Quality	Order	Fixture	Hear	Look	manual	Static

Lister : Zhou.Gui-ling Issue Department : : Industrial Engineering Class



Standard Operation Procedure

Document No. : Baymax & Luisa 16 disassembly SOP

Station : 17 (1/2)

Operation name: Take down M/B screw1

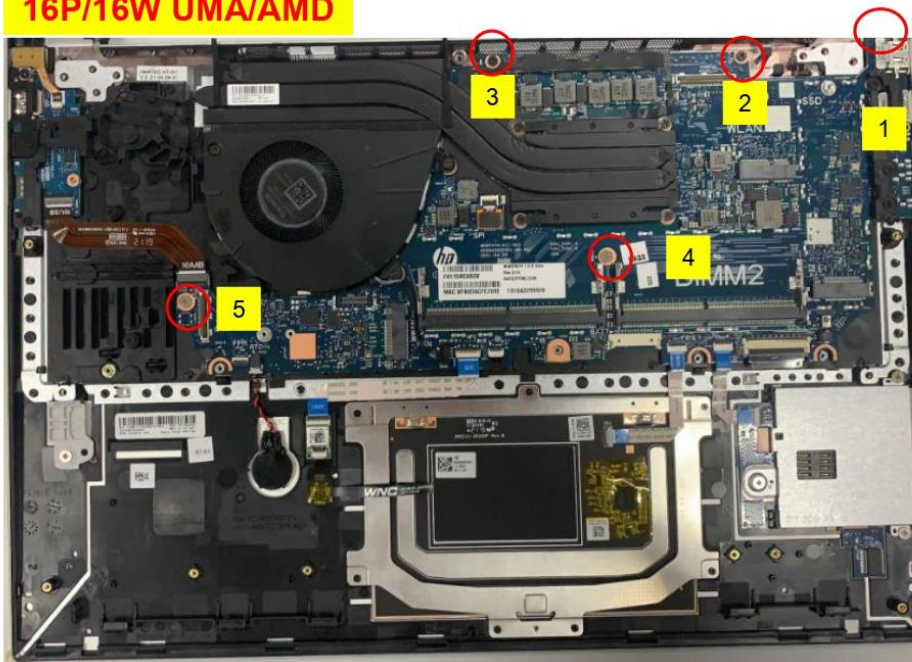
Ver. : 1.00 Edit date: 2022/1/4

Step :

1. Take down M/B screw M2x4L (6052B0081901) *3pcs (pic.1)
 - ❖ screw can not be slipped
 - ❖ Torque : $1.5 \pm 0.2\text{Kgf} \cdot \text{cm}$
2. Take down M/B screw M2x2L (6052B0388301) * 2pcs (UMA) (pic.1)
 - ❖ screw can not be slipped
 - ❖ Torque : $1.5 \pm 0.2\text{Kgf} \cdot \text{cm}$

Disassemble Main board (MB) PCB

16P/16W UMA/AMD



Notice: Please inform production line leader or master if you found any abnormal..

Fixture list (Spec.)	Qty	Symbol							
Electric screwdriver	1								
		Safe	Quality	Order	Fixture	Hear	Look	manual	Static

Lister : Zhou.Gui-ling Issue Department : : Industrial Engineering Class



Standard Operation Procedure

Document No. : Baymax & Luisa 16 disassembly SOP

Station : 17 (2/2)

Operation name: Take down M/B screw1

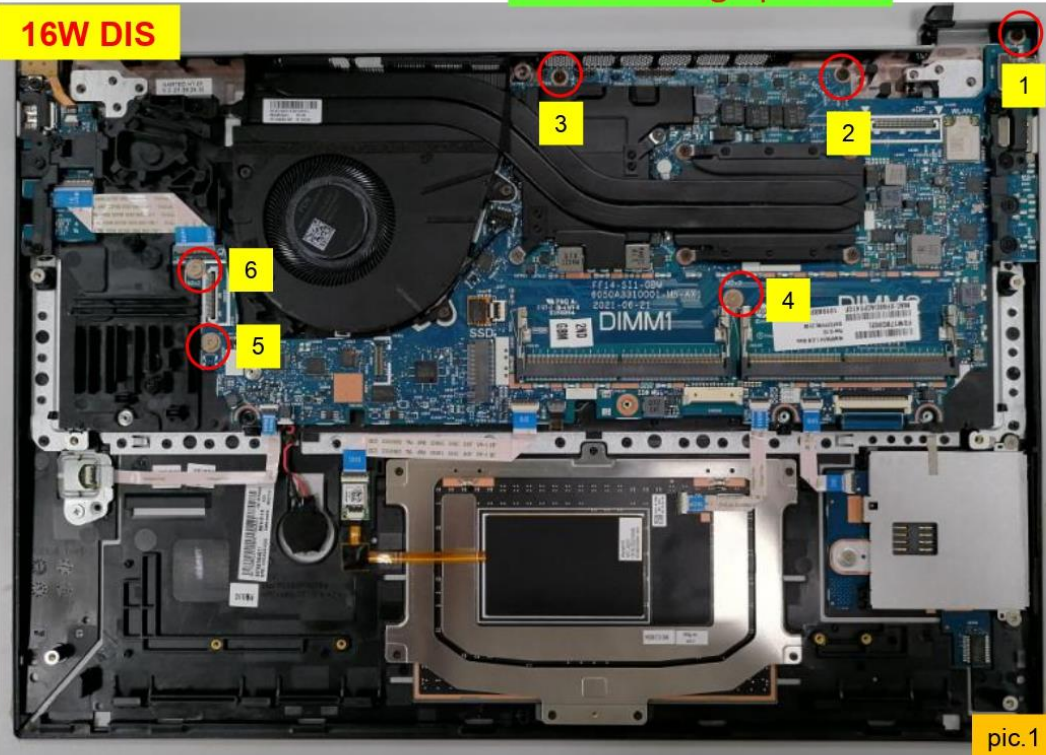
Ver. : 1.00 Edit date: 2022/1/4

Step :

1. Take down M/B screw M2x4L (6052B0081901) *3pcs (pic.1)
 - ❖ screw can not be slipped
 - ❖ Torque : $1.5 \pm 0.2\text{Kgf} \cdot \text{cm}$
2. Take down M/B screw M2x2L (6052B0388301) * 3pcs (UMA) (pic.1)
 - ❖ screw can not be slipped
 - ❖ Torque : $1.5 \pm 0.2\text{Kgf} \cdot \text{cm}$

Disassemble graphic PCB

16W DIS



Notice: Please inform production line leader or master if you found any abnormal..

Fixture list (Spec.)	Qty	Symbol							
Electric screwdriver	1								
		Safe	Quality	Order	Fixture	Hear	Look	manual	Static

Lister : Zhou.Gui-ling Issue Department : : Industrial Engineering Class



Standard Operation Procedure

Document No. : Baymax & Luisa 16 disassembly SOP

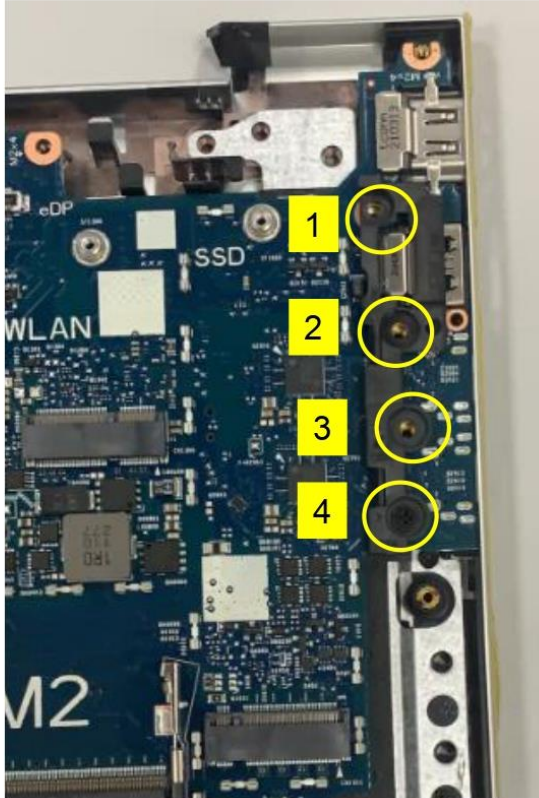
Station : 18(1/1)

Operation name: Take down right frame

Ver. : 1.00 Edit date: 2022/1/4

Step :

1. Take down Frame screw M2x4L * 4 pcs(pic.1)
 - ❖ screw can not be slipped
 - ❖ Torque : $1.5 \pm 0.2 \text{Kg} \cdot \text{cm}$
2. Take down right I/O frame (6051B1493401)



Pic.1

Notice: Please inform production line leader or master if you found any abnormal..

Fixture list (Spec.)	Qty	Symbol							
Electric screwdriver	1								
		Safe	Quality	Order	Fixture	Hear	Look	manual	Static

Lister : Zhou.Gui-ling Issue Department : : Industrial Engineering Class



Standard Operation Procedure

Document No. : Baymax & Luisa 16 disassembly SOP

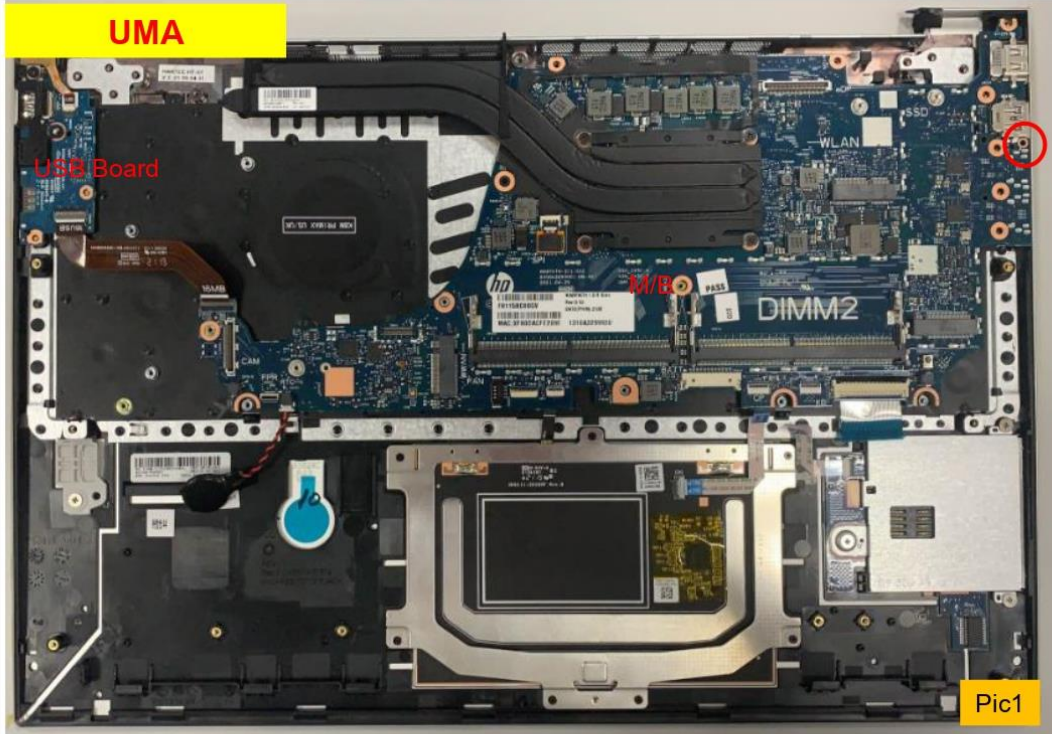
Station : 19(1/2)

Operation name: Take down M/B

Ver. : 1.00 Edit date: 2022/1/4

Step :

1. Take down M/B screw M1.6 x L4 (6052B0141301)*1.
2. Take down M/B from C parts (Pic 1)
 - ❖ screw can not be slipped
 - ❖ Torque : 1.0 ± 0.2Kgf · cm



Notice: Please inform production line leader or master if you found any abnormal..

Fixture list (Spec.)	Qty	Symbol							
Electric screwdriver	1								
		Safe	Quality	Order	Fixture	Hear	Look	manual	Static

Lister : Zhou.Gui-ling Issue Department : : Industrial Engineering Class



Standard Operation Procedure



Document No. : Baymax & Luisa 16 disassembly SOP

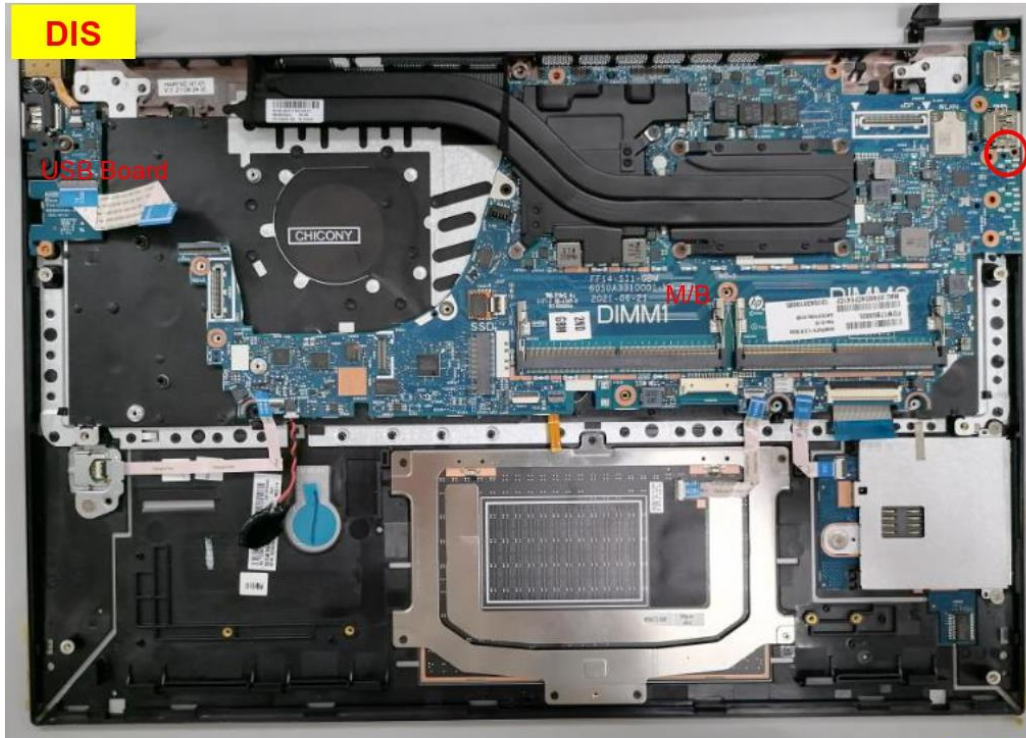
Station : 19(2/2)

Operation name: Take down M/B

Ver. : 1.00 Edit date: 2022/1/4

Step :

1. Take down M/B screw M1.6 x L4 (6052B0141301)*1.
2. Take down M/B from C parts (Pic 1)
 - ❖ screw can not be slipped
 - ❖ Torque : $1.0 \pm 0.2 \text{Kgf} \cdot \text{cm}$



Notice: Please inform production line leader or master if you found any abnormal..

Fixture list (Spec.)	Qty	Symbol							
Electric screwdriver	1								
		Safe	Quality	Order	Fixture	Hear	Look	manual	Static

Lister : Zhou.Gui-ling Issue Department : : Industrial Engineering Class



Standard Operation Procedure

Document No. : Baymax & Luisa 16 disassembly SOP

Station : 20(1/1)

Operation name: Take down Thermal screw

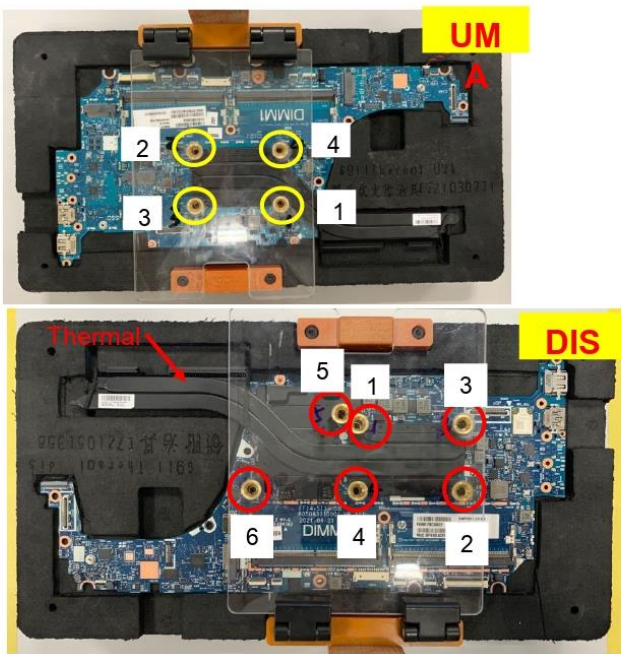
Ver. : 1.00 Edit date: 2022/1/4

Step :



1. Put the MB into the fixture, Take down thermal screw (Pic1)

- ◆ Pay attention to the right way of taking thermal/check whether the fin has transformation.
- ◆ torque : $1.5 \pm 0.2\text{Kgf} \cdot \text{cm}$



Notice: Please inform production line leader or master if you found any abnormal..

Fixture list (Spec.)	Qty	Symbol							
Lock pay support fixture	1								
		Safe	Quality	Order	Fixture	Hear	Look	manual	Static

Lister : Zhou.Gui-ling Issue Department : : Industrial Engineering Class





Standard Operation Procedure

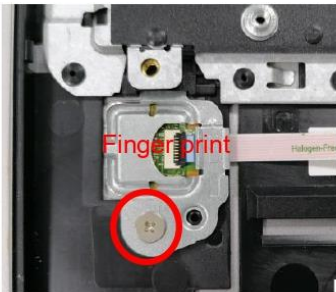
Document No. : Baymax & Luisa 16 disassembly SOP

Station : 21(1/2)

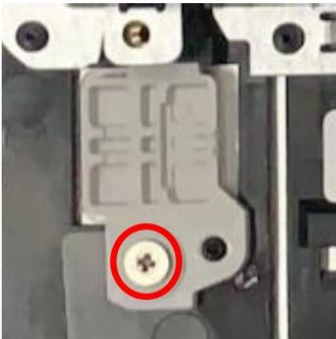
Operation name: Take down Finger Print/Dummy Finger Ver. : 1.00 Edit date: 2022/1/4

Step :

-  1. Take down screw M2.0 * L2.0 (6052B0388301) (Pic 1/Pic 2)
 - ❖ screw can not be slipped
 - ❖ Torque : $1.5 \pm 0.2\text{kgf} \cdot \text{Cm}$
-  2. Take down Finger Print and Dummy Finger











Pic1



Pic2

Notice: Please inform production line leader or master if you found any abnormal..

Fixture list (Spec.)	Qty	Symbol							
Electric screwdriver	1								
		Safe	Quality	Order	Fixture	Hear	Look	manual	Static

Lister : Zhou.Gui-ling Issue Department : : Industrial Engineering Class

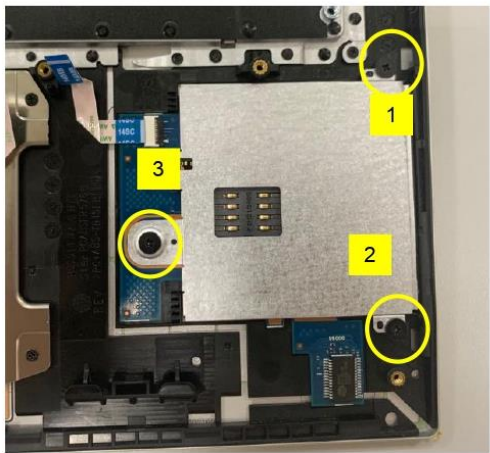


Standard Operation Procedure

Document No. : Baymax & Luisa 16 disassembly SOP

Station : 21(2/2)

Operation name: Take down Smartcard/B or Dummy Ver. : 1.00 Edit date: 2022/1/4



Pic1

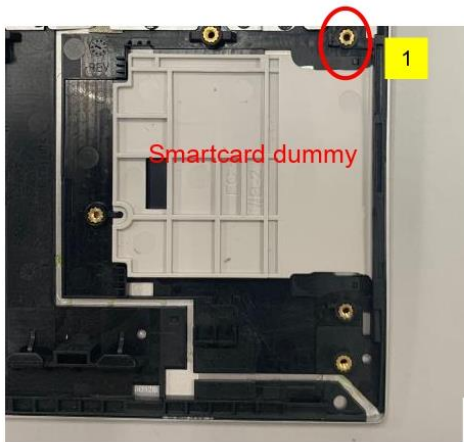
Step :

For Smartcard/B

1. Take down smartcard screw M2x2L (6052B0388301) * 3 (Pic 1)
 - ❖ screw can not be slipped
 - ❖ Torque : $1.5 \pm 0.2\text{Kgf} \cdot \text{cm}$

For Smartcard Dummy

1. Take down smartcard screw M2x2L (6052B0388301) * 1 (Pic 2)
 - ❖ screw can not be slipped
 - ❖ Torque : $1.5 \pm 0.2\text{Kgf} \cdot \text{cm}$
2. Take down Smartcard Dummy



Pic2

Disassemble Smartcard

Notice: Please inform production line leader or master if you found any abnormal..

Fixture list (Spec.)	Qty	Symbol							
Electric screwdriver	1								
		Safe	Quality	Order	Fixture	Hear	Look	manual	Static

Lister : Zhou.Gui-ling Issue Department : : Industrial Engineering Class



Standard Operation Procedure

Document No. : Baymax & Luisa 16 disassembly SOP

Station : 22(1/1)

Operation name: Take down USB/B & Bracket

Ver. : 1.00 Edit date: 2022/1/4

Step :

1. Take the Audio FPC of CNTR
2. Take down screw M2.0 x 4.0L (6052B0081901) * 2
(Pic1)
 - ❖ screw can not be slipped
 - ❖ Torque : $1.5 \pm 0.2\text{Kgf} \cdot \text{cm}$
3. Take down Audio BRKT & USB

Notice: Please inform production line leader or master if you found any abnormal..

Fixture list (Spec.)	Qty	Symbol							
Electric screwdriver	1								
		Safe	Quality	Order	Fixture	Hear	Look	manual	Static

Lister : Zhou.Gui-ling Issue Department : : Industrial Engineering Class



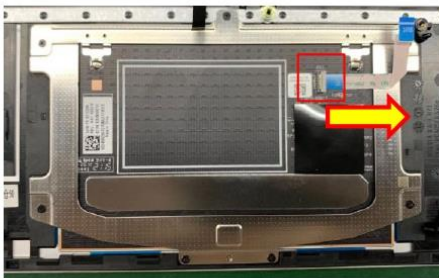
Standard Operation Procedure

Document No. : Baymax & Luisa 16 disassembly SOP

Station : 23(1/1)

Operation name: Take down FFC & screw

Ver. : 1.00 Edit date: 2022/1/4

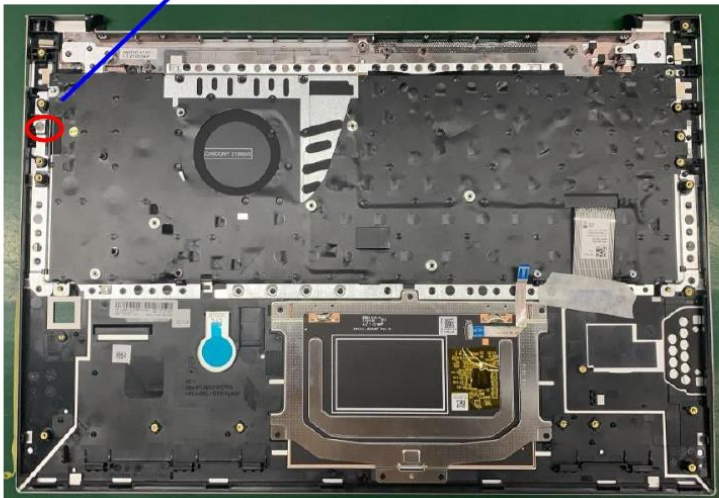


Pic1



Step :

- 1. Take down FFC (pic 1)
 - 2. Take down KB BTKT screw(6052B0388301) *1 (pic2)
- ❖ screw can not be slipped
❖ Torque : $1.5 \pm 0.2 \text{Kgf} \cdot \text{cm}$



Pic2

Notice: Please inform production line leader or master if you found any abnormal..

Fixture list (Spec.)	Qty	Symbol							
Electric screwdriver	1								
		Safe	Quality	Order	Fixture	Hear	Look	manual	Static

Lister : Zhou.Gui-ling Issue Department : : Industrial Engineering Class



Standard Operation Procedure

Document No. : Baymax & Luisa 16 disassembly SOP

Station : 24(1/1)

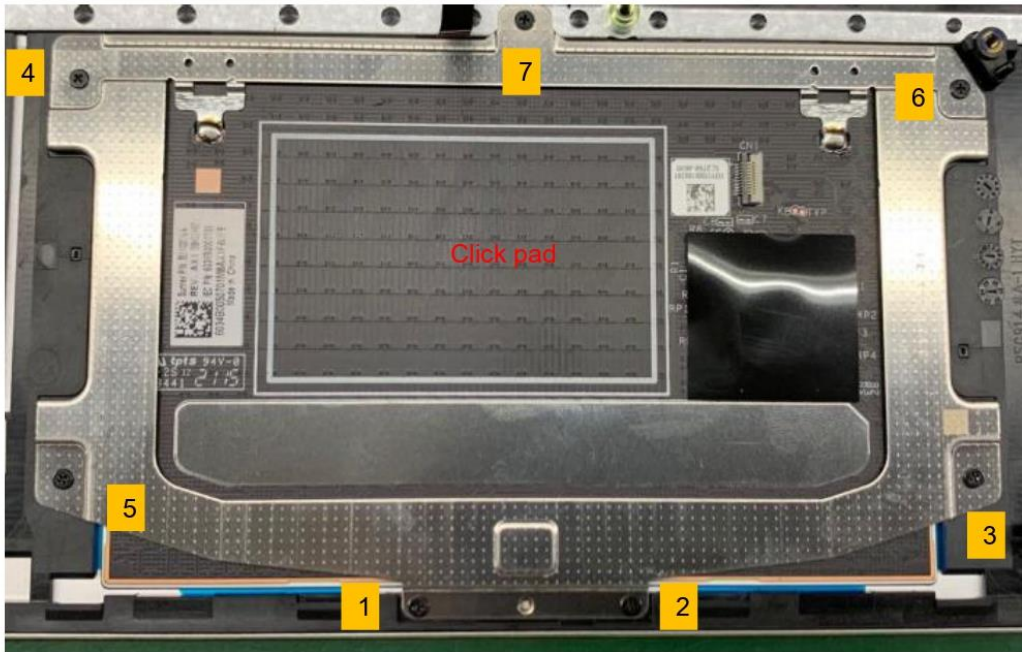
Operation name: Take down click pad

Ver. : 1.00 Edit date: 2022/1/4

Step :

**Disassemble
Touch module PCB**

- ☑ 1. Take down Click pad screw
(6052B0508901) * 7
- ❖ screw can not be slipped
- ❖ Torque : $1.0 \pm 0.2\text{Kgf} \cdot \text{cm}$



Notice: Please inform production line leader or master if you found any abnormal..

Fixture list (Spec.)	Qty	Symbol							
Electric screwdriver	1								
		Safe	Quality	Order	Fixture	Hear	Look	manual	Static

Lister : Zhou.Gui-ling Issue Department : : Industrial Engineering Class

EL-MF877-00
Template Revision D

Page 32

last updated May-2022

HP Inc. instructions for this template are available at [EL-MF877-01](#)



Standard Operation Procedure

Document No. : Baymax & Luisa 16 disassembly SOP

Station : 25(1/2)

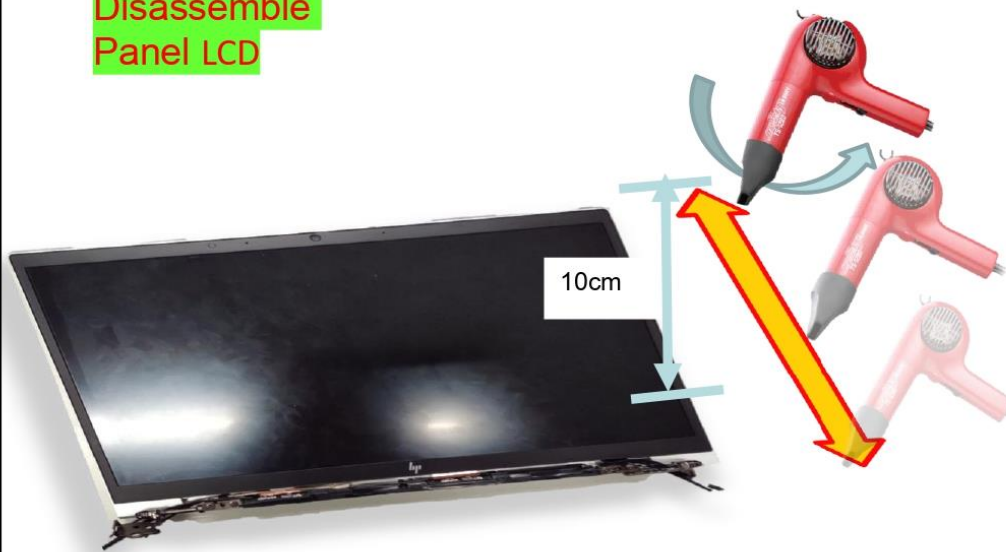
Operation name: Take down bezel

Ver. : 1.00 Edit date: 2022/1/4

Step :

1. Hair dryer need to be around 10cm from B-cover.
2. When blowing, need to **swing and moving along bezel together**. Not focus on single spot to keep blowing.

**Disassemble
Panel LCD**



Notice: Please inform production line leader or master if you found any abnormal..

Fixture list (Spec.)	Qty	Symbol							
Thickness jig	1	+	◆	●	🧰	?	👁️	👤	⚠️
Hair dryer	1								

Lister : Zhou.Gui-ling Issue Department : : Industrial Engineering Class



Standard Operation Procedure

Document No. : Baymax & Luisa 16 disassembly SOP

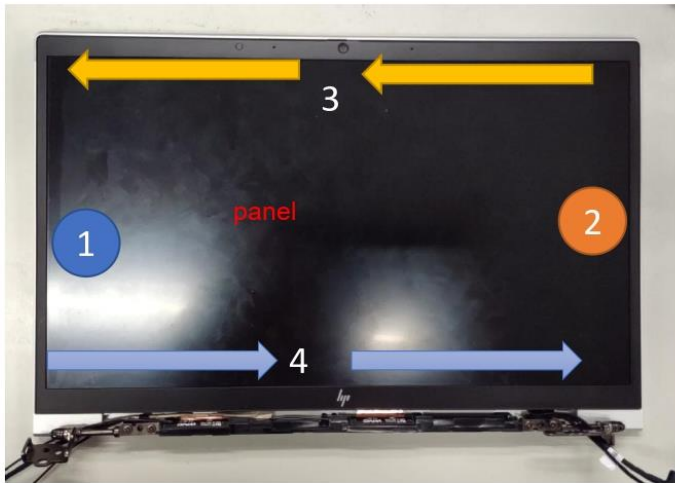
Station : 25(2/2)

Operation name: Disassemble Bezel-2

Ver. : 1.00 Edit date: 2022/1/4

Step :

- ☞ 1. After heating the bezel 25s by 60 °C, then use the thickness jig to separate bezel and panel, disassembly priority as below showing 1~2~3~4,
Attention: First, separate bezel adhesive, and then release bezel hook. Try to avoid pressing panel to damage glass while tear down bezel.



Notice: Please inform production line leader or master if you found any abnormal..

Fixture list (Spec.)	Qty	Symbol							
Thickness jig Hair dryer	1 1								
		Safe	Quality	Order	Fixture	Hear	Look	manual	Static

Lister : Zhou.Gui-ling Issue Department : : Industrial Engineering Class



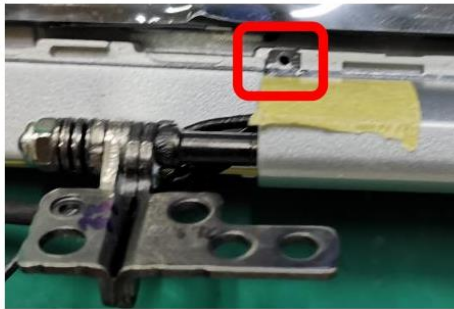
Standard Operation Procedure

Document No. : Baymax & Luisa 16 disassembly SOP

Station : 26(1/1)

Operation name: Take down Hinge cap

Ver. : 1.00 Edit date: 2022/1/4



Pic1

Step :

1. Loosen hinge cap screw and disassembly hinge cap from unit.
 - ❖ Torque : 1.0 ± 0.2 kgf.cm
 - ❖ screw can not be slipped.
 - ❖ Only for WWAN
 - ❖ WLAN does not need to remove the screws, just flip it out



Pic2

Push toward right side



Pic3

Notice: Please inform production line leader or master if you found any abnormal..

Fixture list (Spec.)	Qty	Symbol							
Electric screwdriver	1								
		Safe	Quality	Order	Fixture	Hear	Look	manual	Static

Lister : Zhou.Gui-ling Issue Department : : Industrial Engineering Class



Standard Operation Procedure

Document No. : Baymax & Luisa 16 disassembly SOP

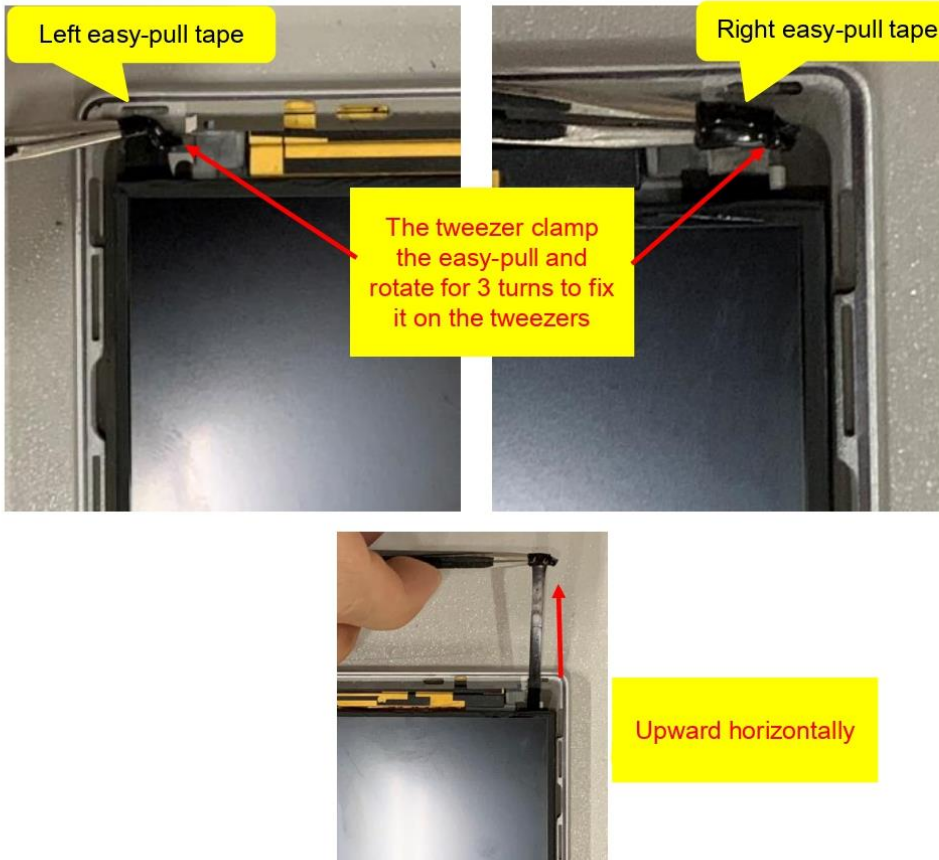
Station : 27(1/1)

Operation name: Disassemble panel easy-pull

Ver. : 1.01 Edit date: 2021/6/20

Step :

1. Use tweezer to clamp left easy-pull tape by 3 Turns › then pull down in parallel.
2. Use the same method to disassembly right easy-pull tape.



Notice: Please inform production line leader or master if you found any abnormal..

Fixture list (Spec.)	Qty	Symbol							
Tweezers	1								
		Safe	Quality	Order	Fixture	Hear	Look	manual	Static

Lister : Zhou.Gui-ling Issue Department : : Industrial Engineering Class



Standard Operation Procedure

Document No. : Baymax & Luisa 16 disassembly SOP

Station : 28(1/1)

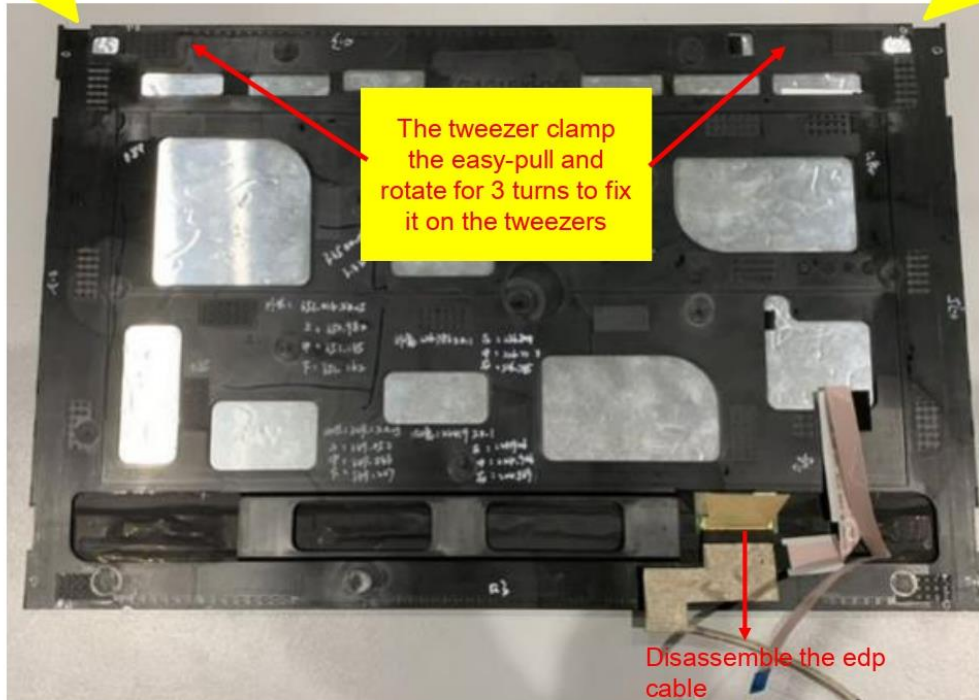
Operation name: Disassemble OLED panel easy-pull Ver. : 1.01 Edit date : 2021/6/20

Step : Only for OLED panel

1. Use tweezer to clamp left easy-pull tape by 3 Turns , then pull down in parallel.
2. Use the same method to disassembly right easy-pull tape.

Left easy-pull tape

Right easy-pull tape



Notice: Please inform production line leader or master if you found any abnormal..

Fixture list (Spec.)	Qty	Symbol							
Tweezers	1								
		Safe	Quality	Order	Fixture	Hear	Look	manual	Static

Lister : Zhou.Gui-ling Issue Department : : Industrial Engineering Class

EL-MF877-00
Template Revision **D**

Page 37

last updated May-2022

HP Inc. instructions for this template are available at [EL-MF877-01](#)



Standard Operation Procedure

Document No. : Baymax & Luisa 16 disassembly SOP

Station : 29(1/1)

Operation name: Take down e-DP Cable

Ver. : 1.00 Edit date: 2022/1/4

Step :

- 1. Take the EDP cabel out of the hook safety (pic 1)
- 2. Take the EDP Cable out of Panel CNTR (Pic 2)
- For privacy**
- 3. Take down panel FFC (Pic3)



Pic1

先将透明mylar 掀起，再掀起扣环，再退出cable



Pic2



Pic3

Notice: Please inform production line leader or master if you found any abnormal..

Fixture list (Spec.)	Qty	Symbol							
		Safe	Quality	Order	Fixture	Hear	Look	manual	Static

Lister : Zhou.Gui-ling Issue Department : : Industrial Engineering Class



Standard Operation Procedure

Document No. : Baymax & Luisa 16 disassembly SOP

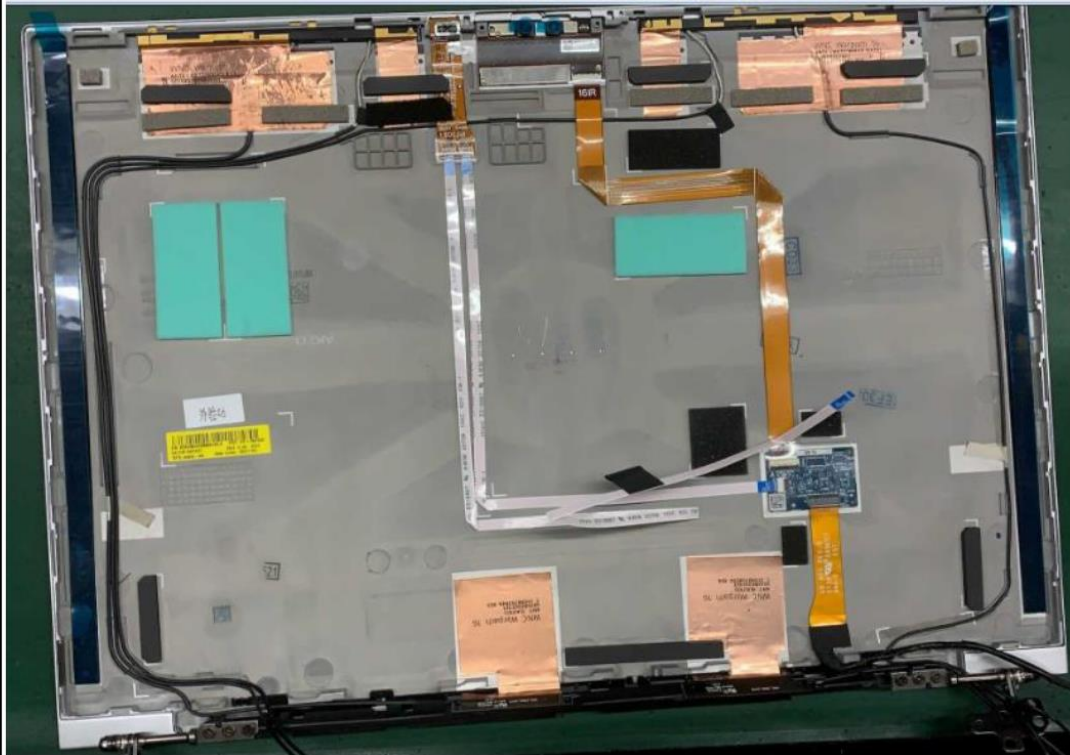
Station : 30(1/1)

Operation name: Disassemble Sponge & gasket

Ver. : 1.00 Edit date: 2022/1/4

Step :

1. Remove all sponge and gasket as shown below (Pic1)



Pic1

Notice: Please inform production line leader or master if you found any abnormal..

Fixture list (Spec.)	Qty	Symbol							
		Safe	Quality	Order	Fixture	Hear	Look	manual	Static

Lister : Zhou.Gui-ling Issue Department : : Industrial Engineering Class

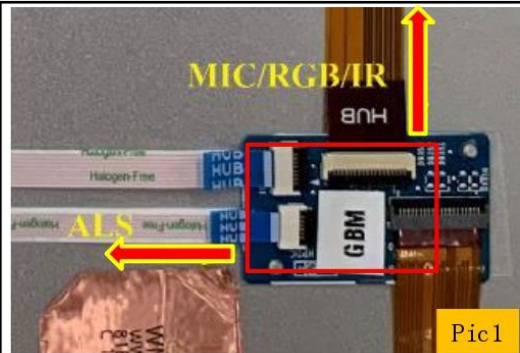


Standard Operation Procedure

Document No. : Baymax & Luisa 16 disassembly SOP

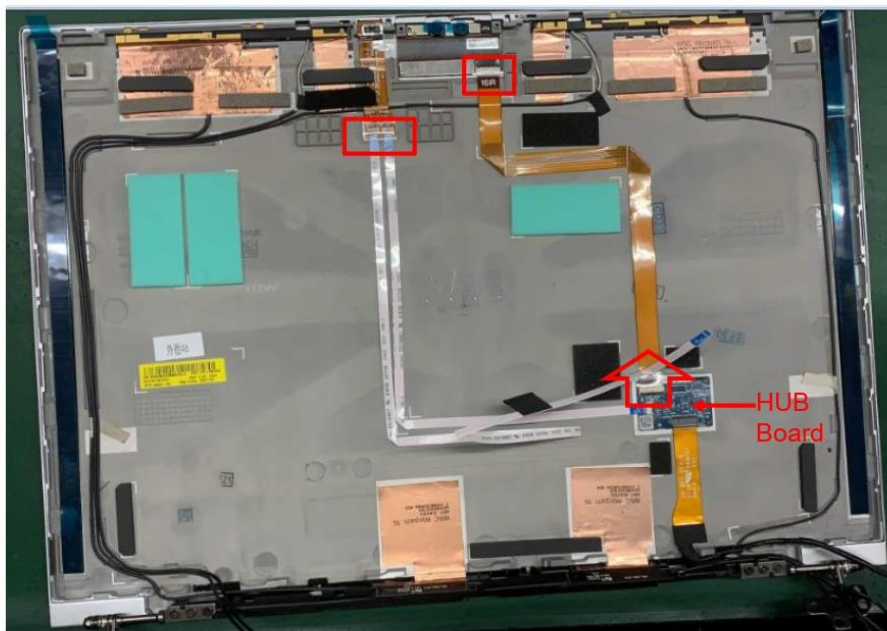
Station : 31(1/2)

Operation name: Take down Camera FPC & ALS FFC& Hub/B Ver. : 1.00 Edit date: 2022/1/4



Step :

- 1.Remove the HUB/B and connect the FPC (Pic 1/Pic 2)



Pic2

Notice: Please inform production line leader or master if you found any abnormal..

Fixture list (Spec.)	Qty	Symbol							
		Safe	Quality	Order	Fixture	Hear	Look	manual	Static

Lister : Zhou.Gui-ling Issue Department : : Industrial Engineering Class



Standard Operation Procedure

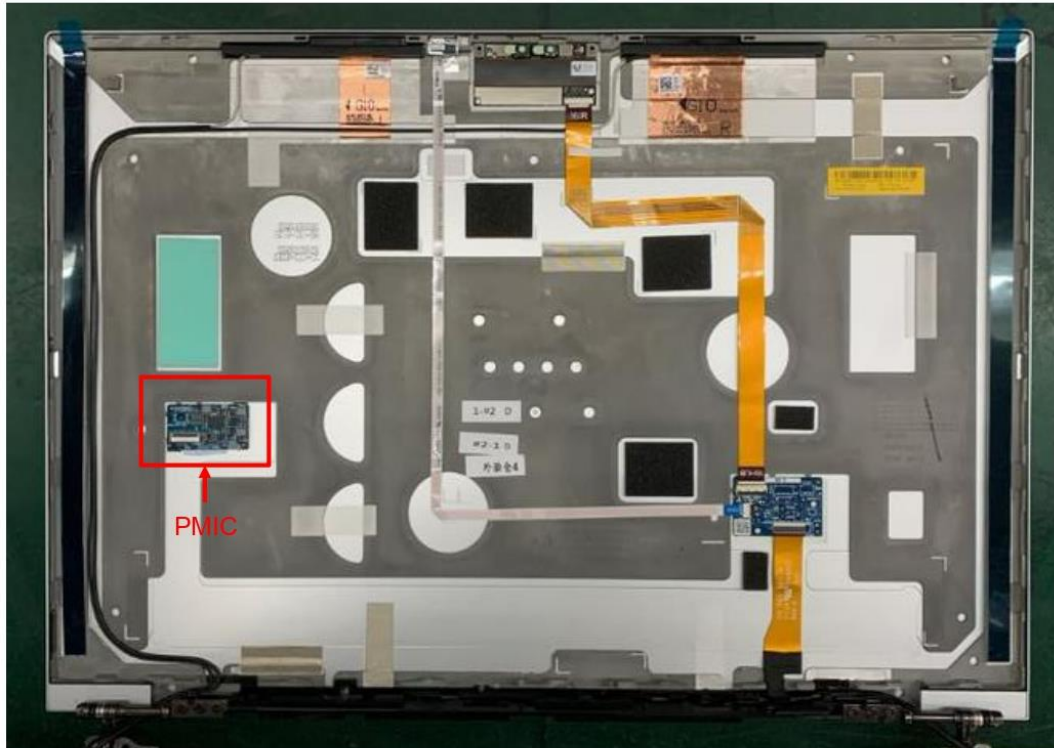
Document No. : Baymax & Luisa 16 disassembly SOP

Station : 31(2/2)

Operation name: Take down Camera FPC & ALS FFC& Hub/B Ver. : 1.00 Edit date: 2022/1/4

Step :

1. Matching---Remove the PMIC (Pic 1)
only for OLED A-cover



Pic1

Notice: Please inform production line leader or master if you found any abnormal..

Fixture list (Spec.)	Qty	Symbol							
		Safe	Quality	Order	Fixture	Hear	Look	manual	Static

Lister : Zhou.Gui-ling Issue Department : : Industrial Engineering Class



Standard Operation Procedure

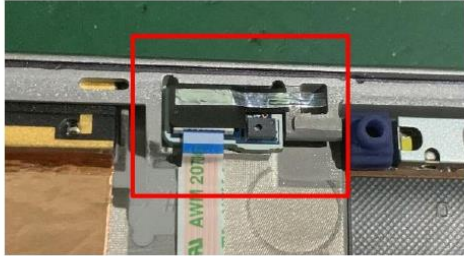
Document No. : Baymax & Luisa 16 disassembly SOP

Station : 32(1/1)

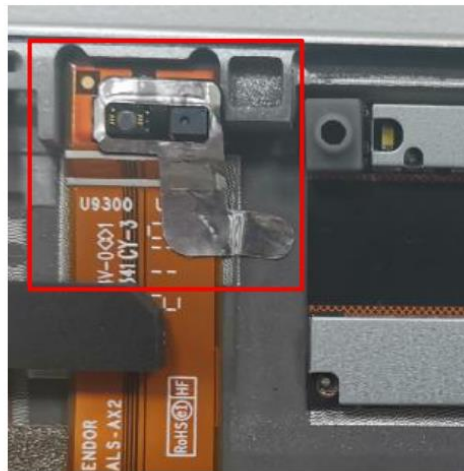
Operation name: Take down ALS/B

Ver. : 1.00 Edit date: 2022/1/4









Step :



-  1.Disassemble FFC
-  2.Disassemble ALS board aluminum foil and ALS board



Notice: Please inform production line leader or master if you found any abnormal..

Fixture list (Spec.)	Qty	Symbol							
									
		Safe	Quality	Order	Fixture	Hear	Look	manual	Static

Lister : Zhou.Gui-ling Issue Department : : Industrial Engineering Class

EL-MF877-00
Template Revision **D**

Page 42

last updated May-2022

HP Inc. instructions for this template are available at [EL-MF877-01](#)



Standard Operation Procedure

Document No. : Baymax & Luisa 16 disassembly SOP

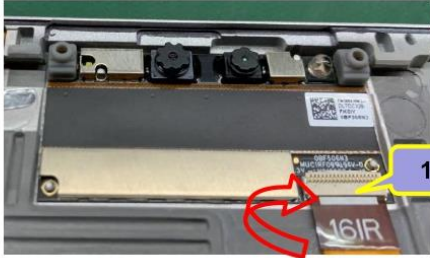
Station : 33(1/1)

Operation name: Disassemble Camera

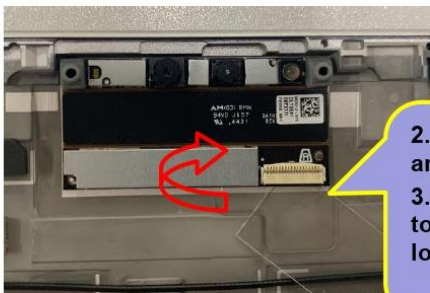
Ver. : 1.00 Edit date : 2022/1/4

Step :

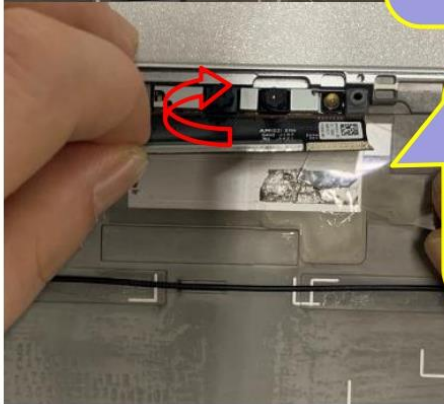
1. Take the camera out of the A-cover .



1. Take down FFC tape



2. Insert the tool between the lower side of the camera and the A-cover
3. slide the harness across the underside of the camera to separate the glue from the A-cover (Disassemble the lower part of the camera)



3. Rotate the lower part of the camera up
4. Insert the tool between the lower side of the camera and the A-cover (partially disassemble camera head)
5. Remove the camera from the A-cover with both hands

Notice: Please inform production line leader or master if you found any abnormal..

Fixture list (Spec.)	Qty	Symbol							
Disassemble camera auxiliary fixture	1								
		Safe	Quality	Order	Fixture	Hear	Look	manual	Static

Lister : Zhou.Gui-ling Issue Department : : Industrial Engineering Class

EL-MF877-00
Template Revision D

Page 43

last updated May-2022

HP Inc. instructions for this template are available at [EL-MF877-01](#)



Standard Operation Procedure


Document No. : Baymax & Luisa 16 disassembly SOP

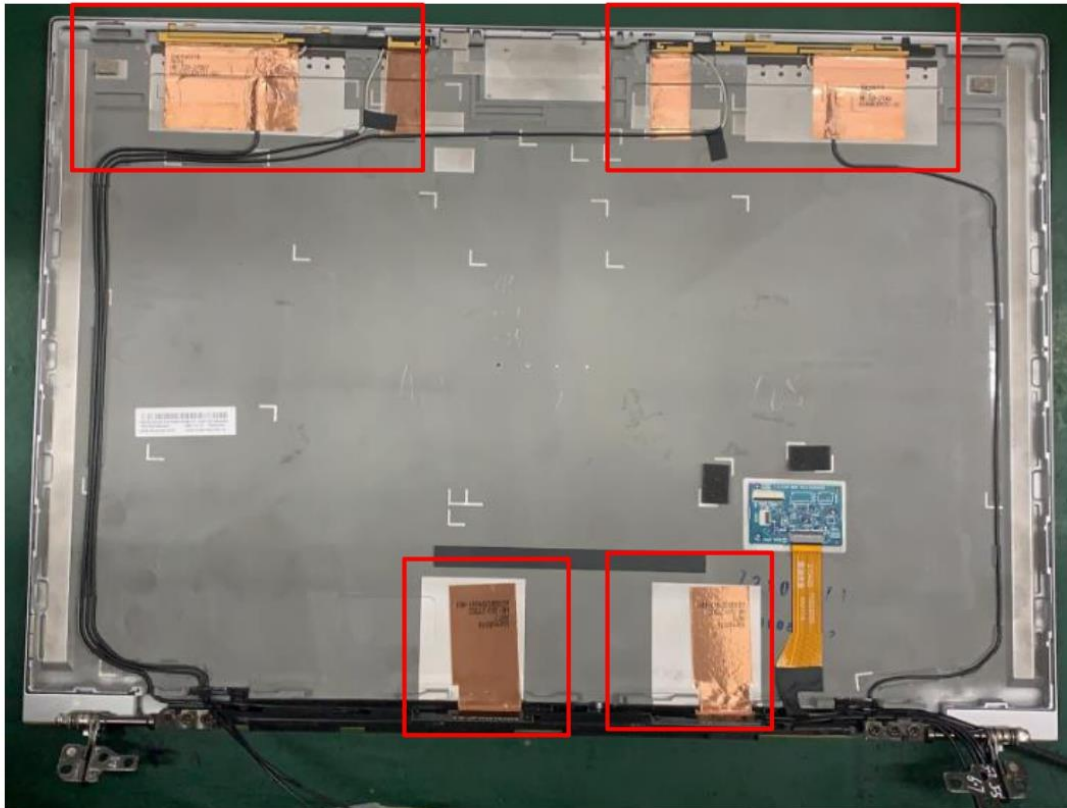
Station : 34(1/1)

Operation name: Take down all the antenna

Ver. : 1.00 Edit date: 2022/1/4

Step :

-  1. Take down all the antenna (Pic1)



Pic1

Notice: Please inform production line leader or master if you found any abnormal..

Fixture list (Spec.)	Qty	Symbol							
		Safe	Quality	Order	Fixture	Hear	Look	manual	Static

Lister : Zhou.Gui-ling Issue Department : : Industrial Engineering Class



Standard Operation Procedure

Document No. : Baymax & Luisa 16 disassembly SOP

Station : 35(1/1)

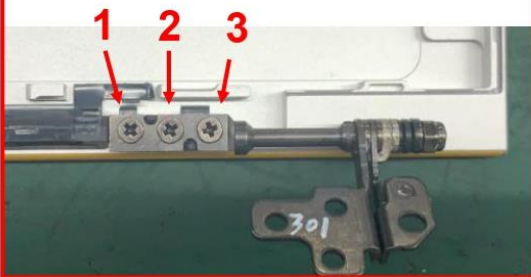
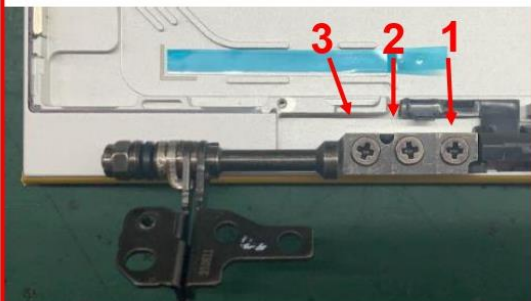
Operation name: Take down hinge screw

Ver. : 1.00 Edit date: 2022/1/4

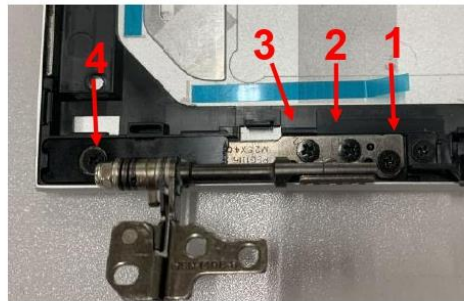
Step :

1. Take down left and right screw(6052B0139801) *6 FOR WWAN Thixo
❖ Torque : $3.4 \pm 0.2\text{Kgf} \cdot \text{cm}$
2. Take down left and right screw(6052A0034501) *8 FOR AL+PL
❖ Torque : $3.4 \pm 0.2\text{Kgf} \cdot \text{cm}$

For Thixo



For AL+PL



Notice: Please inform production line leader or master if you found any abnormal..

Fixture list (Spec.)	Qty	Symbol							
Electric screwdriver	1								
		Safe	Quality	Order	Fixture	Hear	Look	manual	Static

Lister : Zhou.Gui-ling Issue Department : : Industrial Engineering Class