

PANORAMA ANTENNAS

Panorama's consistent cutting-edge development ensures that its antennas meet the demands of the very latest technology. With over 70 years' experience in delivering world-class antenna products, Panorama's current product range reflects its unparalleled expertise in providing high-quality performance antennas.

Low Profile UHF

380-520 (Banded) / 800MHz
Rugged design for heavy duty applications
Easy installation
Ground plane Independent



The Fez LTE Antenna

4G/3G/2G LTE
698-2700MHz
Optional 1x or 2x2 MiMo WiFi 2.4 / 5.0GHz
Optional integrated GPS/GNSS
Ground plane independent



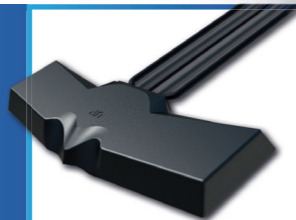
Great White® 5G

2x2 MiMo 5G/4G/3G/2G LTE
617-960 / 1710-6000MHz
Optional Integrated GPS/GNSS
Up to 6x6 MiMo WiFi 2.4/5.0GHz
UN118 Cables & IK10 Rated



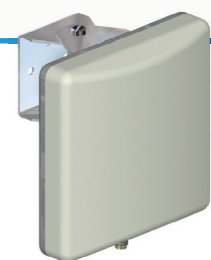
MiMo Dash Mount

2x2 MiMo 5G/4G/3G/2G LTE
Optional 1x or 2x2 MiMo WiFi
Optional integrated GPS/GNSS
Mount on or under dashboard



SiSo WiFi Panel Antenna

Covers 2.4 & 5GHz for WiFi
High gain directional antenna
Ideal WiFi coverage extender



UHF Transit Antenna

Standard four hole rail fixing
Wideband UHF element
Integrated GPS / GNSS antenna



Heavy Duty MiMo Transit Antenna

2x2 MiMo 5G/4G/3G/2G LTE
698-6000MHz
Standard rail four hole fixing
Optional integrated GPS/GNSS antenna
Fully rail industry certified



Directional MiMo WiFi

Support 2x2 & 4x4 MiMo
across 2.4/5GHz
High Gain 9dbi Antenna
Suitable for wall or rail mounting
3.4-3.8GHz Version available



Low Profile Internal MiMo WiFi

Up to 4x4 MiMo WiFi 2.4/5.0GHz
Ceiling mount
Low profile, robust housing
EN50155, EN45545-2 & UN ECE 118.01





**IP69K
RATED**

Great White® 5G

FEATURES

2x2 MiMo 5G/4G/3G/2G LTE
617-960 / 1710-6000MHz
Optional Integrated GPS/GNSS
Up to 6x6 MiMo WiFi 2.4/5.0GHz
UN118 Cables & IK10 Rated

Part no.	GPS/ GNSS	MiMo LTE	MiMo WiFi
LPMM-6-60		2x2	
LGMM-6-60	●	2x2	
LGMDM-6-60-24-58	●	2x2	2x2
LGMTM-6-60-24-58	●	2x2	3x3
LGMQM-6-60-24-58	●	2x2	4x4
LGMHM-6-60-24-58	●	2x2	6x6

*Part numbers refer to the white version only



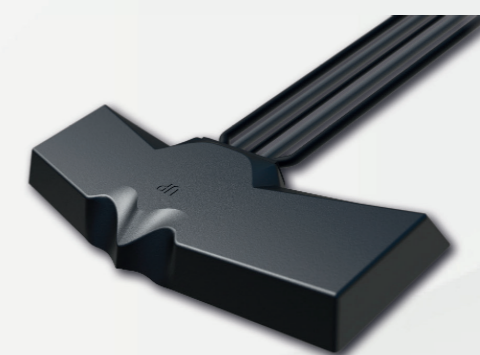
Low Profile UHF Antenna

FEATURES

380-520 (Banded) / 800MHz
Rugged design for heavy duty applications
Easy installation
Ground plane Independent

Part no.	Frequency (MHz)
LP390	380-400
LP420	410-430
LP440	430-450
LP460	450-470
LPL-S5	806-870

*LG versions available with GPS/GNSS
* White version upon request



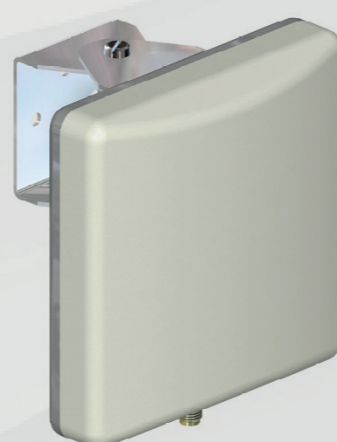
MiMo Dash Mount

FEATURES

2x2 MiMo 5G/4G/3G/2G LTE
Optional 1x or 2x2 MiMo WiFi
Optional integrated GPS/GNSS
Mount on or under dashboard

Part no.	GPS/ GNSS	MiMo LTE	MiMo WiFi	WiFi
BATM-7-60		2x2		
BATGM-7-60	●	2x2		
BATGM-7-60-S24-58	●	2x2		●
BATGM-7-60-24-58	●	2x2	2x2	

SiSo WiFi Panel Antenna

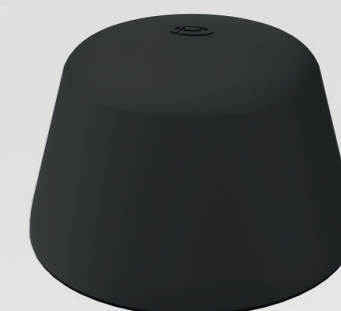


FEATURES

Covers 2.4 & 5GHz for WiFi
High gain directional antenna
Ideal WiFi coverage extender

Part no.	WiFi
W24-58-CP-9	●

The Fez LTE Antenna



FEATURES

4G/3G/2G LTE
698-2700MHz
Optional 1x or 2x2 MiMo WiFi 2.4 / 5.0GHz
Optional integrated GPS/GNSS
Ground plane independent

Part no.	GPS/ GNSS	LTE	WiFi	MiMo WiFi
LPE-7-27		●		
LGE-7-27	●	●		
LGE-7-27-24-58	●	●	●	
LGEM-7-27-24-58	●	●		2x2



Low Profile Internal MiMo WiFi

FEATURES

Up to 4x4 MiMo WiFi 2.4/5.0GHz
Ceiling mount
Low profile, robust housing
EN50155, EN45545-2 & UN ECE 118.01

Part no.	MiMo WiFi
CM2-24-58	2x2
CM3-24-58	3x3
CM4-24-58	4x4



Heavy Duty MiMo Transit Antenna

FEATURES

2x2 MiMo 5G/4G/3G/2G LTE
698-6000MHz
Standard rail four hole fixing
Optional integrated GPS/GNSS antenna
Fully rail industry certified

Part no.	GPS/GNSS	MiMo LTE
TRNM-7-60		2x2
TRNMG-7-60	•	2x2

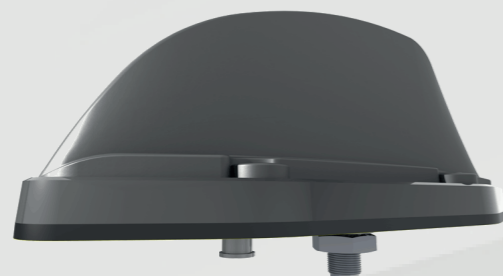


Directional MiMo WiFi

FEATURES

Support 2x2 & 4x4 MiMo across 2.4/5GHz
High Gain 9dbi Antenna
Suitable for wall or rail mounting
3.4-3.8GHz Version available

Part no.	MiMo WiFi
WMM29G-24-58-NJ	2x2
WMM49G-24-58-NJ	4x4



UHF Transit Antenna

FEATURES

Standard four hole rail fixing
Wideband UHF element
Integrated GPS / GNSS antenna

Part no.	Frequency (MHz)
TRNCG-TET	380-430
TRNCG-S4	450-470