



## Product End-of-Life Disassembly Instructions

**Product Category:** Workstation

**Marketing Name / Model**  
 [List multiple models if applicable.]

HP Z4 G5 Workstation

FCLSA-2201A

FCLSA-2201B

FCLSA-2201C

**Purpose:** The document is intended for use by end-of-life recyclers or treatment facilities. It provides the basic instructions for the disassembly of HP Inc. products to remove components and materials requiring selective treatment, as defined by EU directive 2012/19/EC, Waste Electrical and Electronic Equipment (WEEE).

NOTE: Recyclers should sort plastic materials into resin streams for recycling based on the ISO 11469 plastic marking code on the plastic part. For any questions on plastic marking or identification of location of parts or components requiring selective treatment, please contact [HP's Sustainability Contact](#).

### 1.0 Items Requiring Selective Treatment

1.1 Items listed below are classified as requiring selective treatment. An "X" in the list of components and parts indicates the product contains the component or part requiring selective treatment

Item Description	Components and parts requiring selective treatments	Quantity of items included in product
Printed Circuit Boards (PCB) or Printed Circuit Assemblies (PCA) with a surface greater than 10 sq cm	<input checked="" type="checkbox"/> Main board (MB) PCB*1 <input checked="" type="checkbox"/> Solid state drive (SSD) PCB*1 <input type="checkbox"/> Wireless WAN module (WWAN) PCB <input type="checkbox"/> Touch module PCB <input checked="" type="checkbox"/> Power supply PCB*4 <input checked="" type="checkbox"/> External Keyboard (KB)*1 <input checked="" type="checkbox"/> External Mouse*1 <input checked="" type="checkbox"/> Switch Card*1 <input checked="" type="checkbox"/> Memory*2 <input checked="" type="checkbox"/> graphic card PCB*1 <input checked="" type="checkbox"/> HDD PCB*1	13
Batteries, excluding Li-Ion batteries. This includes standard alkaline, coin or button style batteries	<input checked="" type="checkbox"/> RTC/CMOS battery <input type="checkbox"/> Others: _____	1
Li-Ion batteries. Includes all Li-Ion batteries if more than one is provided with the product (such as a detachable notebook keyboard battery, etc.)	Li-ion battery(ies) are attached to the product by: <input type="checkbox"/> screws <input type="checkbox"/> snaps <input type="checkbox"/> adhesive <input type="checkbox"/> other. Explain _____	0

Item Description	Components and parts requiring selective treatments	Quantity of items included in product
Mercury-containing components. For example, mercury in lamps, display backlights, scanner lamps, switches, batteries		0
Liquid Crystal Displays (LCD) with a surface greater than 100 sq cm. Includes background illuminated displays with gas discharge lamps	<input type="checkbox"/> Panel LCD	0
Cathode Ray Tubes (CRT)		0
Capacitors / condensers (Containing PCB/PCT)		0
Electrolytic Capacitors / Condensers measuring greater than 2.5 cm in diameter or height	<input checked="" type="checkbox"/> Power Supply capacitor(s) or condenser(s)	2
External electrical cables and cords	<input checked="" type="checkbox"/> AC power cord <input type="checkbox"/> Audio, video or data cables <input type="checkbox"/> Other: _____	1
Gas Discharge Lamps		0
Plastics containing Brominated Flame Retardants (not including external electrical cables and cords, PCBs or PCAs already listed as a separate item above)		0
Components and parts containing toner and ink, including liquids, semi-liquids (gel/paste) and toner. Include the cartridges, print heads, tubes, vent chambers, and service stations.		0
Components and waste containing asbestos		0
Components, parts and materials containing refractory ceramic fibers		0
Components, parts and materials containing radioactive substances		0
Components containing chlorofluorocarbons (CFC), hydrochlorofluorocarbons (HCFC) or hydrofluorocarbons (HFC), hydrocarbons (HC)		0

## 2.0 Tools Required

List the type and size of the tools that would typically be used to disassemble the product to a point where components and materials requiring selective treatment can be removed.

Tool Description	Tool Size (if applicable)
Screwdriver	Philip#0
Screwdriver	Torx T8
Heatgun	N/A
Suction Cup	

## 3.0 Product Disassembly Process

3.1 List the basic steps that should typically be followed to remove components and materials requiring selective treatment including the required steps to remove the external enclosure.

- Figure1 Open and remove the access panel
  - Figure2 Remove the P-MID-RETAINER.
  - Figure3 Remove the graphic card from MB
  - Figure4 Remove the 2pcs memories from MB
  - Figure5 Remove the 1pcs SSD
  - Figure6 Press the bottom and loosen the screws of cooler
  - Figure7 Disconnect the cooler cable from MB and remove the cooler
  - Figure8 Remove the CPU from the cooler
  - Figure9 Disconnect the PSU cable from MB
  - Figure10 Loose the 4 screws of the PSU
  - Figure11 Press the latch to remove the PSU from chassis
  - Figure12 Disconnect the HDD SATA cable from HDD
  - Figure13 Press the latches of the HDD rail to remove the HDD from cage
  - Figure14 Remove the HDD from HDD tray
  - Figure15 Press the HDD's latch on HDD tray, and remove the HDD tray from HDD cage
  - Figure16 Press the latches to remove the rear system fan
  - Figure17 Disconnect rear system fan cable from MB
  - Figure18 Press the 4 latches to separate the fan guard from rear system fan
  - Figure19 Press the latch and disconnect the cable from MB
  - Figure20 Separate interlock holder from cable
  - Figure21 Disconnect all other cables from MB
  - Figure22 Remove the battery from the MB
  - Figure23 Press the button and remove the heat sink
  - Figure24 Loose the screws of the MB
  - Figure25 Remove the MB from chassis
  - Figure26 Press the guide and remove the front upper chassis fan and fan guard
  - Figure27 Press the 2 latch to separate the fan from front fan housing
  - Figure28 Release the latch to remove the FIO module and ODD devices from cage
  - Figure29 Loosen the screws(x2) of speaker and release speaker.
  - Figure30 Disconnect the speaker cable from switch card
  - Figure31 Release the front panel mount cable from clip
  - Figure32 Disconnect the front panel mount cable from switch card
  - Figure33 Release the front panel mount cable by push out 2 pins fixed front side in switch card tray.
  - Figure34 Release the front panel mount cable by push out 2 pins fixed black side in switch card tray.
  - Figure35 Loose the 4pcs switch card PCA screws and remove the switch card PCA
  - Figure36 Remove the SD card reader carrier
  - Figure37 Loosen the left and right side hooks of switch card panel
  - Figure38 Loosen the 2pcs bottom side hooks of switch card panel
  - Figure39 Detailed parts of switch card assembly
  - Figure40 Remove the DVD from chassis
  - Figure41 Release the PCI snaps
  - Figure42 Remove the front panel from chassis
  - Figure43 Loose the 2 screws to remove the front handle from chassis
  - Figure44 Press the latch to remove the cover antenna pirate from chassis.
  - Figure45 Use tool to unscrew five screws to loosen top cover. Remove top cover from bottom chassis.
  - Figure46 Remove the stand-off & Mylar from PCBA by hand-pulling. Use tool to unscrew three screws to loosen EMI board.
  - Figure47 Use tool to remove the cable tie.
  - Figure48 Disconnect AC inlet connector and CN602A, CN601B cable connector from PCBA .Remove EMI board.
  - Figure49 Identity PCBA > 10 cm<sup>2</sup> for further treatment (EMI board: 161.2053 cm<sup>2</sup>).
  - Figure50 Identity PCBA > 10 cm<sup>2</sup> for further treatment (DC-6112 board: 14.72 cm<sup>2</sup>).
  - Figure51 Identity electrolyte capacitor > 2.5 cm for further treatment (Length: 5 cm).
  - Figure52 Remove the LED cable from CASE by hand-pulling. Disconnect fan connector from PCBA. Use tool to unscrew EL-MF877-00
- Template Revision D

four screws to loosen Main board. Remove Main board.

Figure53 Identity PCBA > 10 cm<sup>2</sup> for further treatment (MAIN board: 160.923 cm<sup>2</sup>).

Figure54 Identity PCBA > 10 cm<sup>2</sup> for further treatment (DC-6113 board: 25.506 cm<sup>2</sup>).

Figure55 Use tool to remove the cable tie. Use tool to unscrew five screws to loosen FAN & AC cable. Remove FAN & Socket. Use tool to remove the LED holder.

Figure56 Remove the insulator from CASE by hand-pulling.

3.2 Location of components requiring selective treatment. The photos and/or graphics below identify the location of the parts or components requiring selective treatment within the main unit. For End-of-Life product disassembly instructions of external accessories including external power supply (EPS), external keyboard (KB) external mouse and external cables and cords, refer to the following URL: [End-of-Life Product Disassembly Instructions \(hp.com\)](https://www.hp.com/End-of-Life-Product-Disassembly-Instructions)

Figure1 Open and remove the access panel.

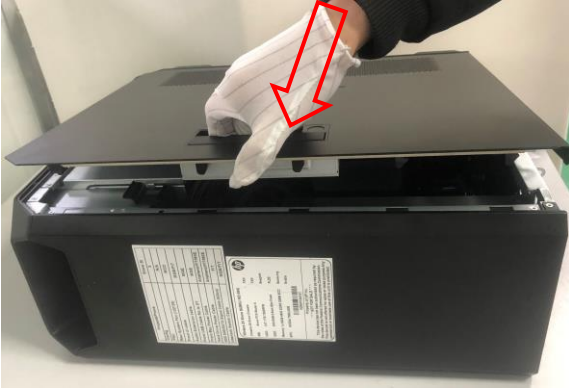


Figure2 Remove the P-MID-RETAINER.

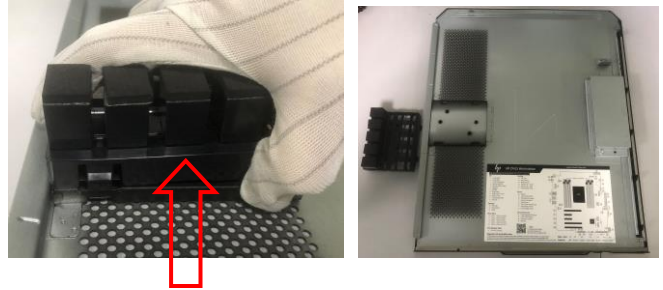


Figure3 Remove the graphic card from MB

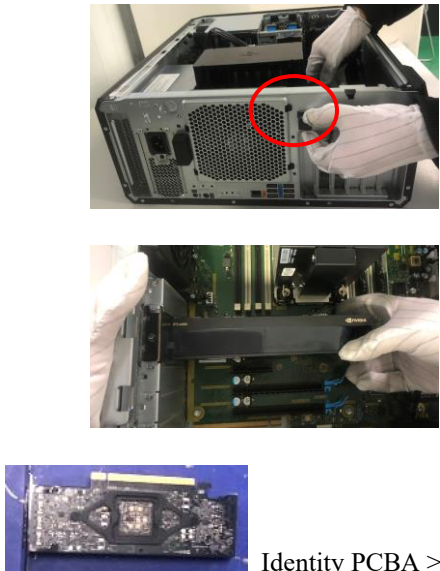


Figure4 Remove the 2pcs memories from MB

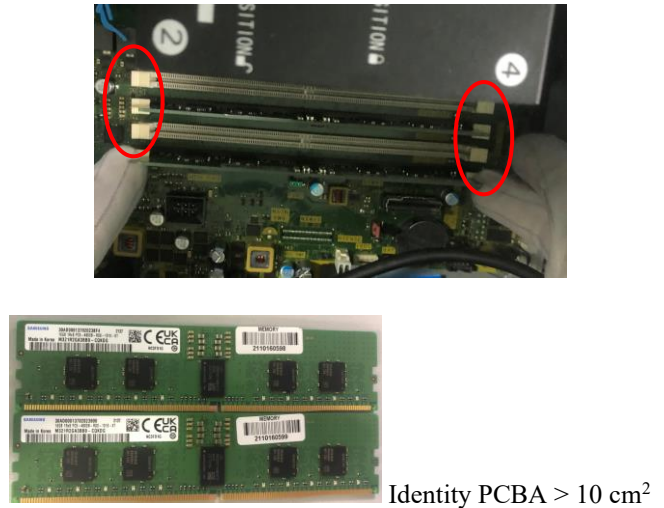
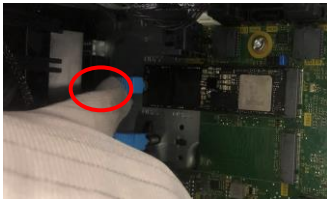


Figure5 Remove the 1pcs SSD



Below SSD PCB area > 10 cm<sup>2</sup>



Figure6 Press the bottom and loosen the screws of cooler

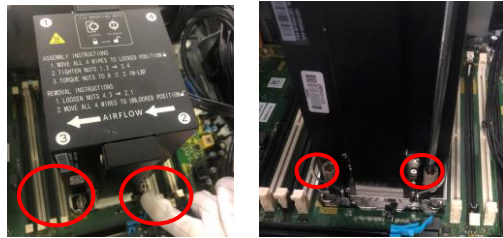


Figure7 Disconnect the cooler cable from MB and remove the cooler.



Figure8 Remove the CPU from the cooler

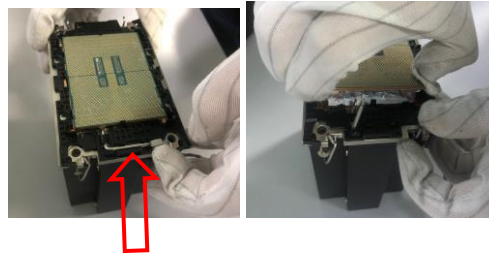


Figure9 Disconnect the PSU cable from MB

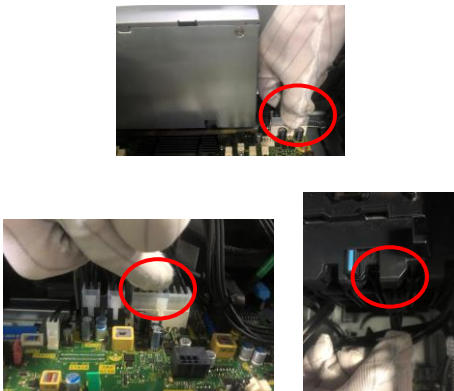


Figure10 Loose the 4 screws of the PSU

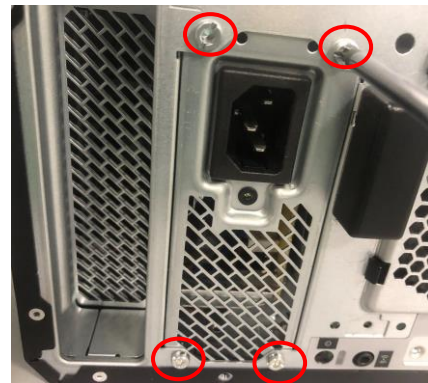


Figure11 Press the latch to remove the PSU from chassis

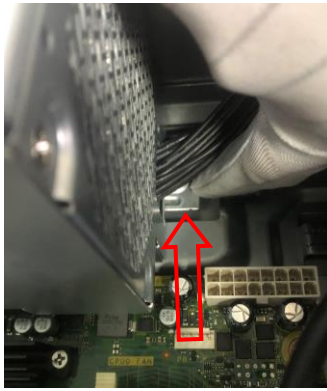


Figure12 Disconnect the HDD SATA cable from HDD



Figure13 Press the latches of the HDD rail to remove the HDD from cage



Figure14 Remove the HDD from HDD tray. See below HDD PCB>10 sq cm.



Figure15 Press the HDD's latch on HDD tray, and remove the HDD tray from HDD cage

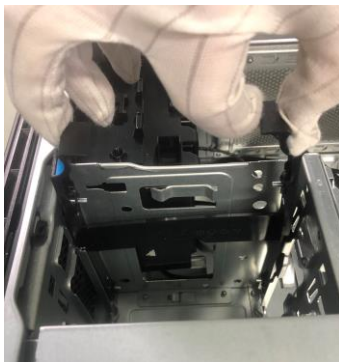


Figure16 Press the latches to remove the rear system fan

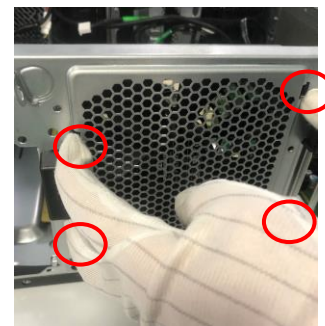


Figure17 Disconnect rear system fan cable from MB and remove the fan.



Figure18 Press the 4 latches to separate the fan guard from rear system fan



Figure19 Press the latch and disconnect the cable from MB

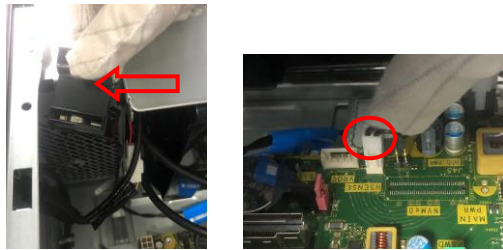


Figure20 Separate interlock holder from cable



Figure21 Disconnect all other cables from MB

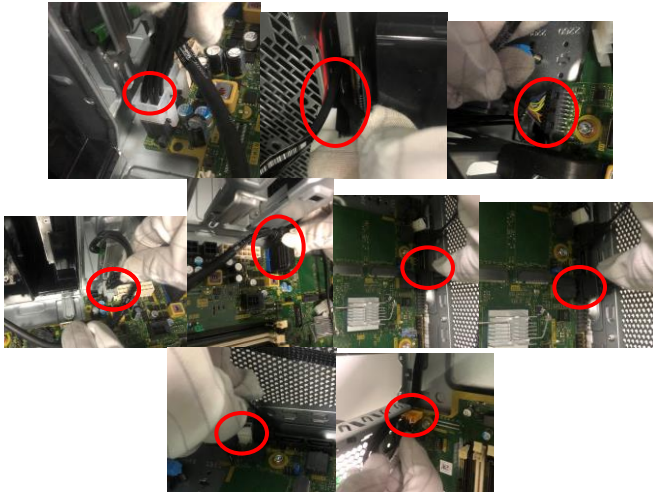


Figure22 Remove the battery from the MB



Figure23 Press the button and remove the heat sink

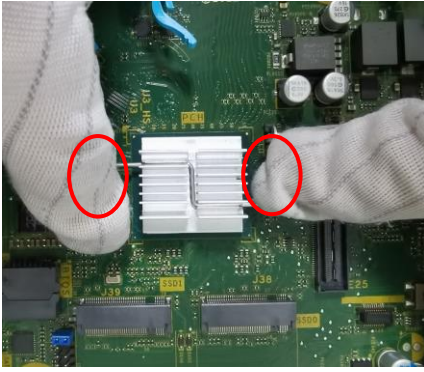


Figure24 Loose the screws of the MB

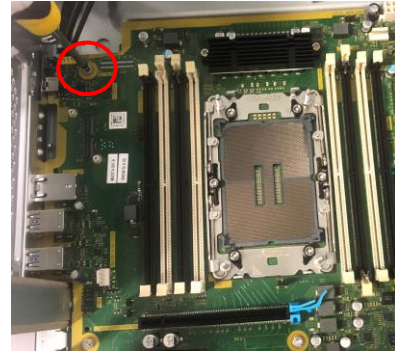


Figure25 Remove the MB from chassis

Identity PCBA > 10 cm<sup>2</sup>

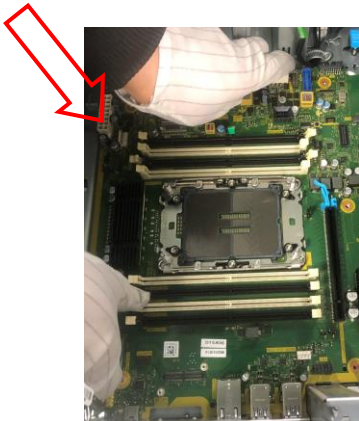


Figure26 Press the guide and remove the front upper chassis fan and fan guard

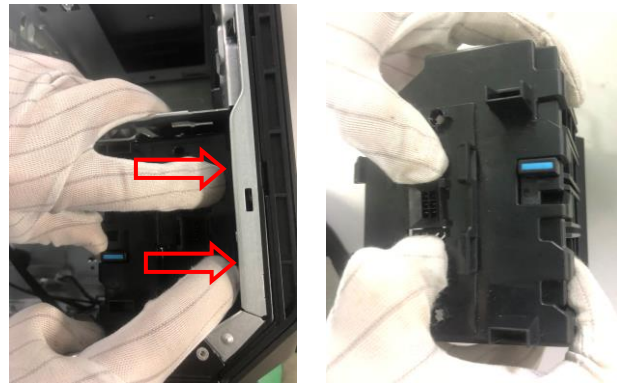


Figure27 Press the 2 latch to Separate the fan from front fan housing



Figure28 Release the latch to remove the FIO module and ODD devices from cage

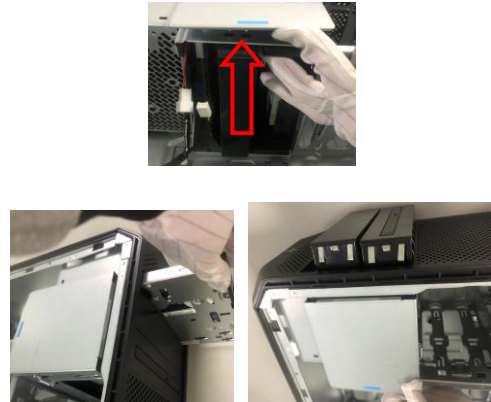


Figure29 Loosen the screws(x2) of speaker and release speaker.

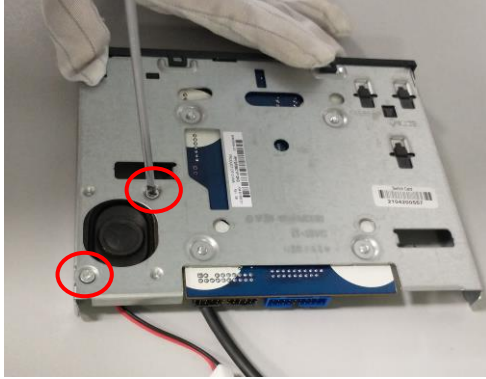


Figure30 Disconnect the speaker cable from switch card

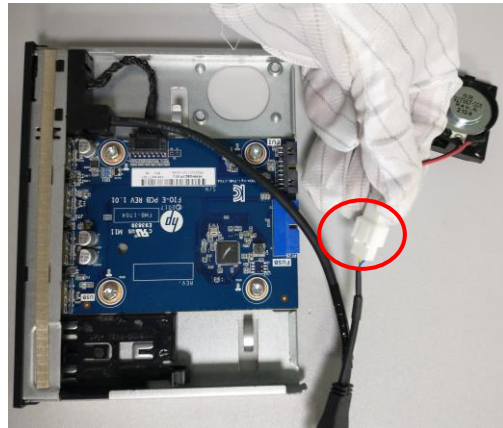


Figure31 Release the front panel mount cable from clip



Figure32 Disconnect the front panel mount cable from switch card



Figure33 Release the front panel mount cable by push out 2 pins fixed front side in switch card tray.

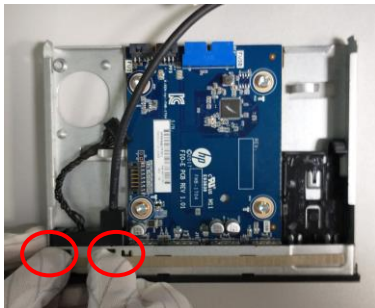


Figure34 Release the front panel mount cable by push out 2 pins fixed black side in switch card tray.

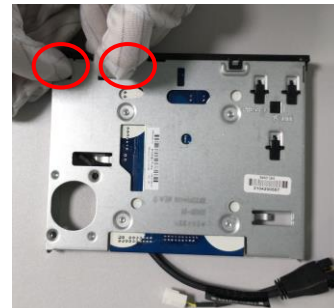


Figure35 Loose the 4pcs switch card PCA screws and remove the switch card PCA

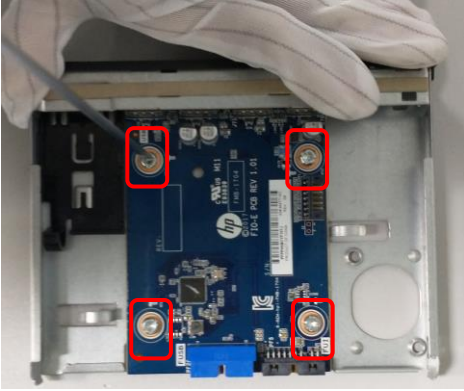


Figure36 Remove the SD card reader carrier

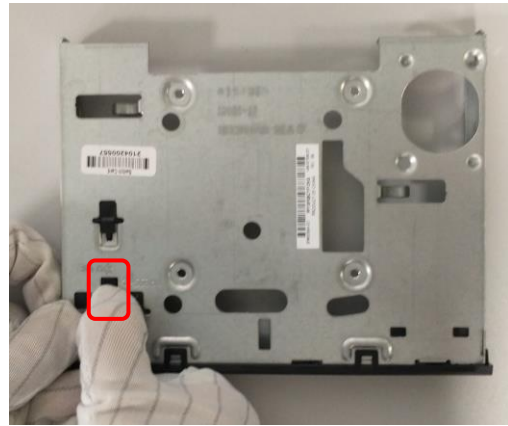


Figure37 Loosen the left and right side hooks of switch card panel

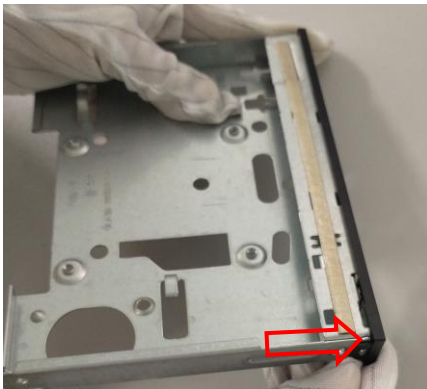


Figure38 Loosen the 2pcs bottom side hooks of switch card panel



Figure39 Detailed parts of switch card assembly

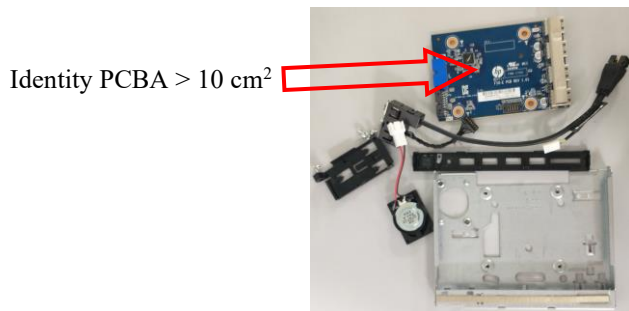


Figure40 Remove the DVD from chassis



Figure41 Release the PCI snaps



Figure42 Remove the front panel from chassis

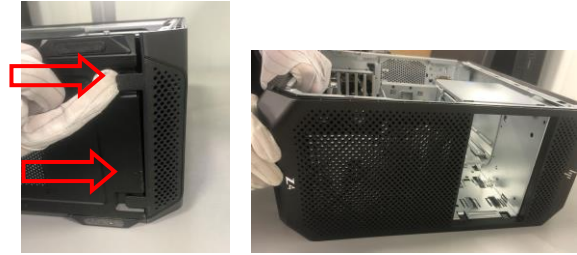


Figure43 Loose the 2 screws to remove the front handle from chassis



Figure44 Press the latch to remove the cover antenna pirate from chassis.

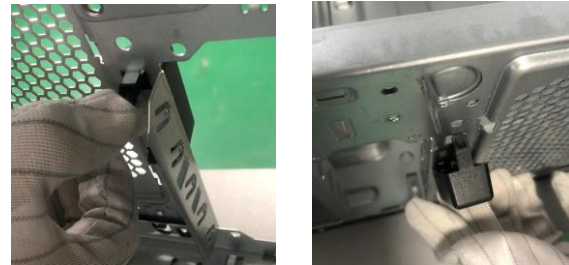


Figure45 Use tool to unscrew five screws to loosen top cover. Remove top cover from bottom chassis.

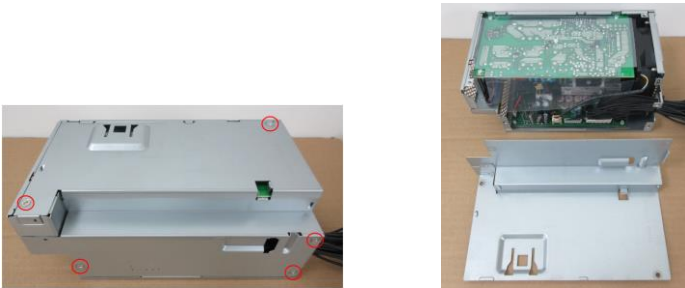


Figure46 Remove the stand-off & Mylar from PCBA by hand-pulling. Use tool to unscrew three screws to loosen EMI board.

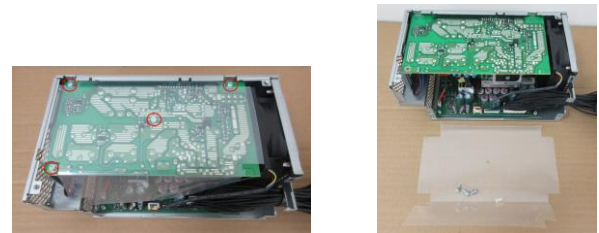


Figure47 Use tool to remove the cable tie.



Figure48 Disconnect AC inlet connector and CN602A, CN601B cable connector from PCBA .Remove EMI board.



Figure49 Identity PCBA > 10 cm<sup>2</sup> for further treatment (EMI board: 161.2053 cm<sup>2</sup>).



Figure50 Identity PCBA > 10 cm<sup>2</sup> for further treatment (DC-6112 board: 14.72 cm<sup>2</sup>).



Figure51 Identity electrolyte capacitor > 2.5 cm for further treatment (Length: 5 cm).



Figure52 Remove the LED cable from CASE by hand-pulling. Disconnect fan connector from PCBA. Use tool to unscrew four screws to loosen Main board. Remove Main board.



Figure53 Identity PCBA > 10 cm<sup>2</sup> for further treatment (MAIN board: 160.923 cm<sup>2</sup>).

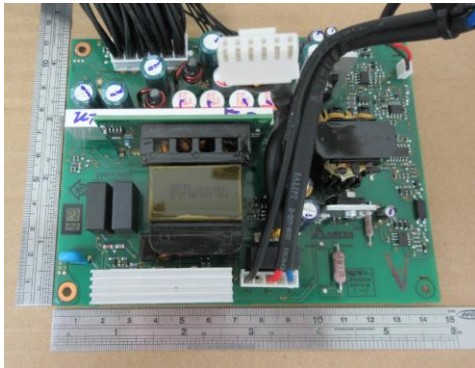


Figure54 Identity PCBA > 10 cm<sup>2</sup> for further treatment (DC-6113 board: 25.506 cm<sup>2</sup>).

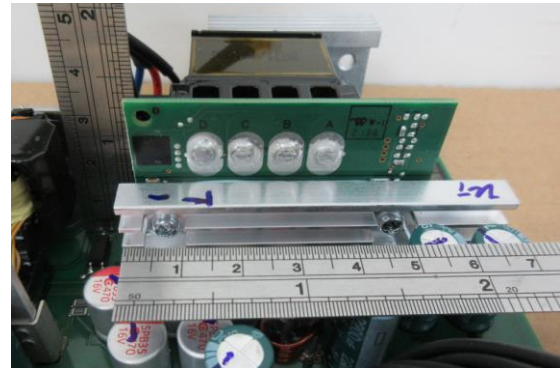


Figure55 Use tool to remove the cable tie. Use tool to unscrew five screws to loosen FAN & AC cable. Remove FAN & Socket. Use tool to remove the LED holder.

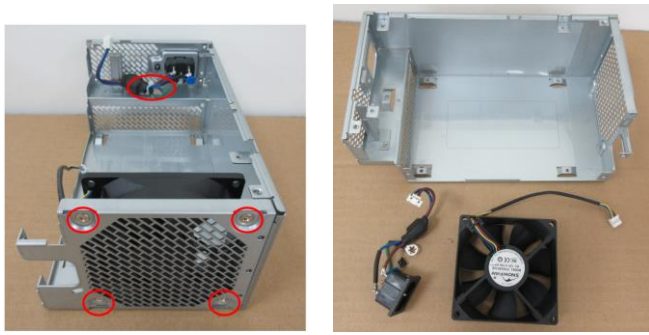


Figure56 Remove the insulator from CASE by hand-pulling.

