

# Latitude 7350 Detachable Active Pen

## User's Guide

## Notes, cautions, and warnings

 **NOTE:** A NOTE indicates important information that helps you make better use of your product.

 **CAUTION:** A CAUTION indicates either potential damage to hardware or loss of data and tells you how to avoid the problem.

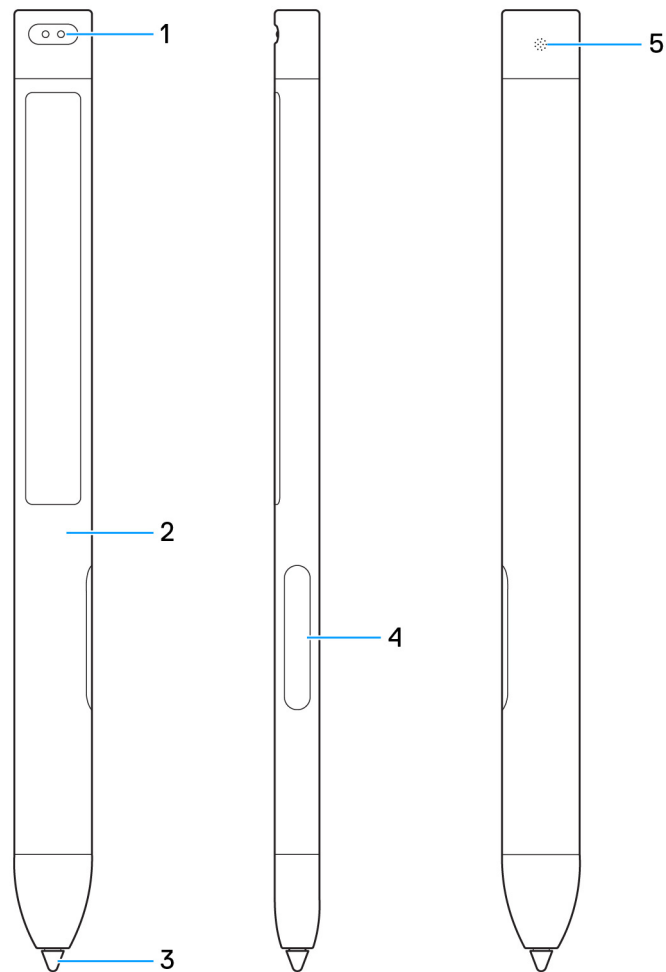
 **WARNING:** A WARNING indicates a potential for property damage, personal injury, or death.

# Contents

<b>Chapter 1: Views of the Latitude 7350 Detachable Active Pen.....</b>	<b>4</b>
<b>Chapter 2: Features.....</b>	<b>5</b>
<b>Chapter 3: Setting up the Latitude 7350 Detachable Active Pen.....</b>	<b>6</b>
Active Pen control panel.....	7
Holding the Latitude 7350 Detachable Active Pen.....	10
<b>Chapter 4: Replacing the pen tip.....</b>	<b>11</b>
<b>Chapter 5: Troubleshooting.....</b>	<b>12</b>
<b>Chapter 6: Getting help and contacting Dell.....</b>	<b>13</b>

# Views of the Latitude 7350 Detachable Active Pen

The following topic provides an overview of the Latitude 7350 Detachable Active Pen.



**Figure 1. Views of the Latitude 7350 Detachable Active Pen**

1. Charging pins
2. Barrel body
3. Pen tip
4. Barrel buttons
5. LED-charge indicator

## Features

The following table lists the features of the Latitude 7350 Detachable Active Pen.

**Table 1. Features of the Latitude 7350 Detachable Active Pen**

Feature	Functionality
Tip	Move the tip over the touch screen to move the pointer. The tip allows you to write, draw, select objects, and so on.
Bottom-barrel button	<p>Press and hold this button and move the tip over the area that you want to erase. To change the functionality of this button, install and use the Active Pen control panel. See the section <a href="#">Active Pen control panel</a>.</p> <p><b>NOTE:</b> The bottom-barrel button will only function after installing the <b>Active Pen Control Panel</b>.</p>
Top-barrel button	<p>Press this button to open the context menu or perform a right-click. To change the functionality of this button, use the Active Pen control panel. See the section <a href="#">Active Pen control panel</a>.</p> <p><b>NOTE:</b> By default, the top-barrel button functions as a right-click.</p>

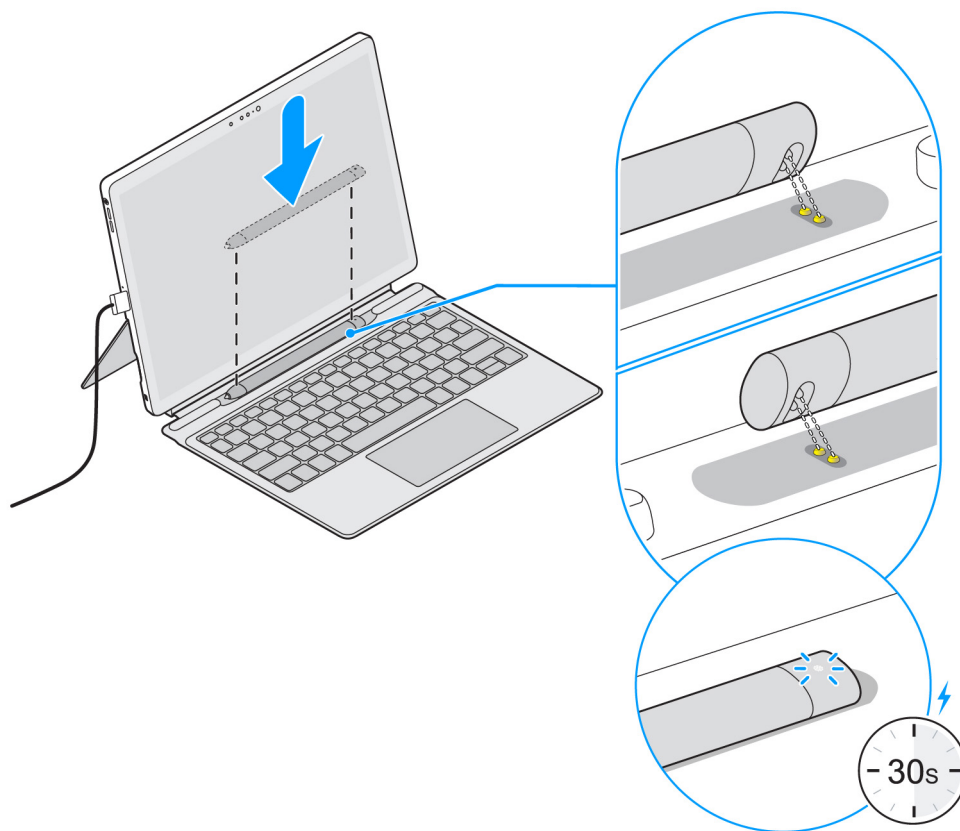
# Setting up the Latitude 7350 Detachable Active Pen

## Docking and charging

The Latitude 7350 Detachable Active Pen uses an in-built battery. The battery provides power for the tip, barrel buttons, and quick-launch features.

To charge the pen, align the connectors on the pen with the connectors on the keyboard and dock the pen to the Latitude 7350 Detachable Keyboard. The pen is fully charged in 30 seconds.

**NOTE:** The LED indicator on the pen powers off when it is fully charged.



**Figure 2. Docking and charging the Latitude 7350 Detachable Active Pen**

## Pairing with the computer

The Latitude 7350 Detachable Active Pen comes installed with basic software. When the pen is placed near the display of the computer, the software automatically pairs the pen to the computer.

# Active Pen control panel

## About the Active Pen control panel

You can customize the buttons on your pen, change pressure sensitivity, and so on, using the Active Pen control panel.

### Installing the Active Pen Control Panel

To install the Active Pen control panel:

1. Turn on the computer.
2. Go to the [Latitude 7350 drivers page](#).
3. Tap or click **Drivers and downloads**.
4. Click **Find drivers**.
5. Select **Mouse, Keyboard and Input Devices** as the **Category** from the drop-down menu.
6. Select the **Operating system** from the drop-down menu.
7. Under **Dell Active Pen Control Panel Application**, tap or click **Download**.
8. Save the file.
9. After the download is complete, open the file and follow the on-screen instructions to install the **Active Pen Control Panel**.

## Using the Active Pen control panel

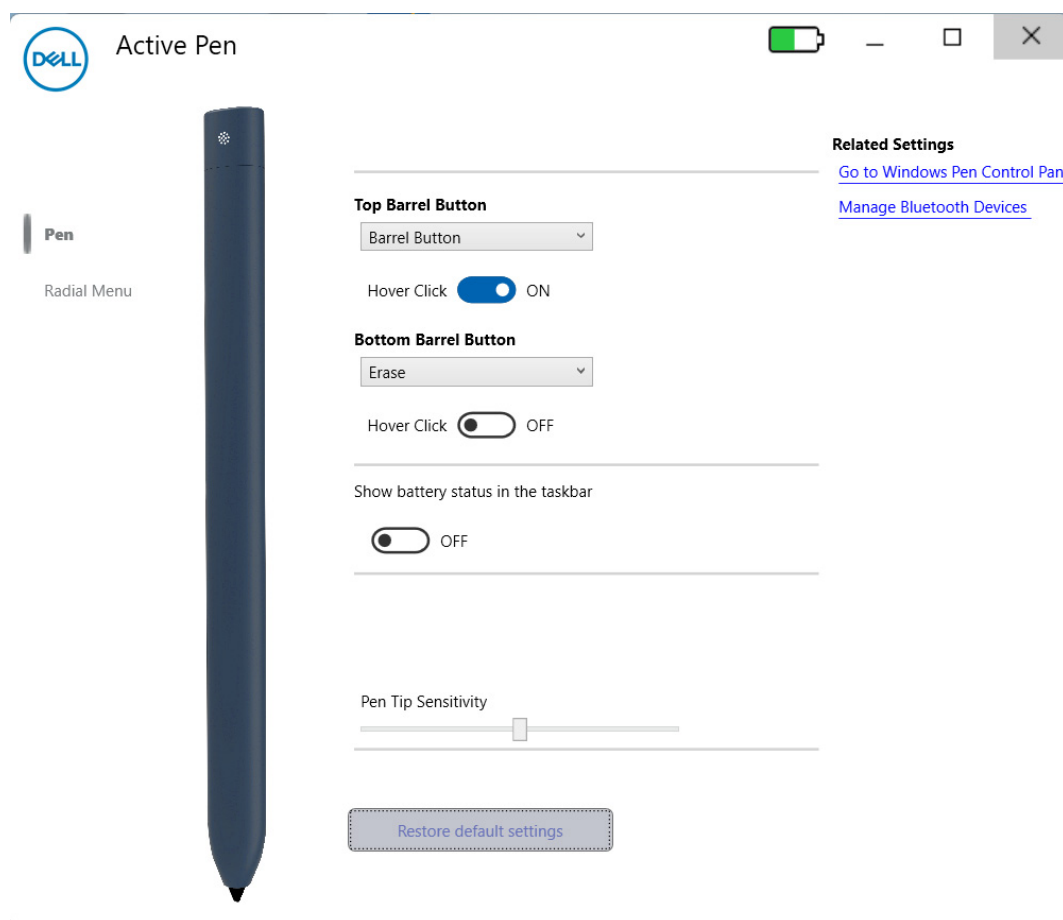


Figure 3. Using Active Pen control panel

- **Top Barrel Button:** The top-barrel button can be disabled or programmed to run specific applications or functions as listed here:
  - Barrel button (default)

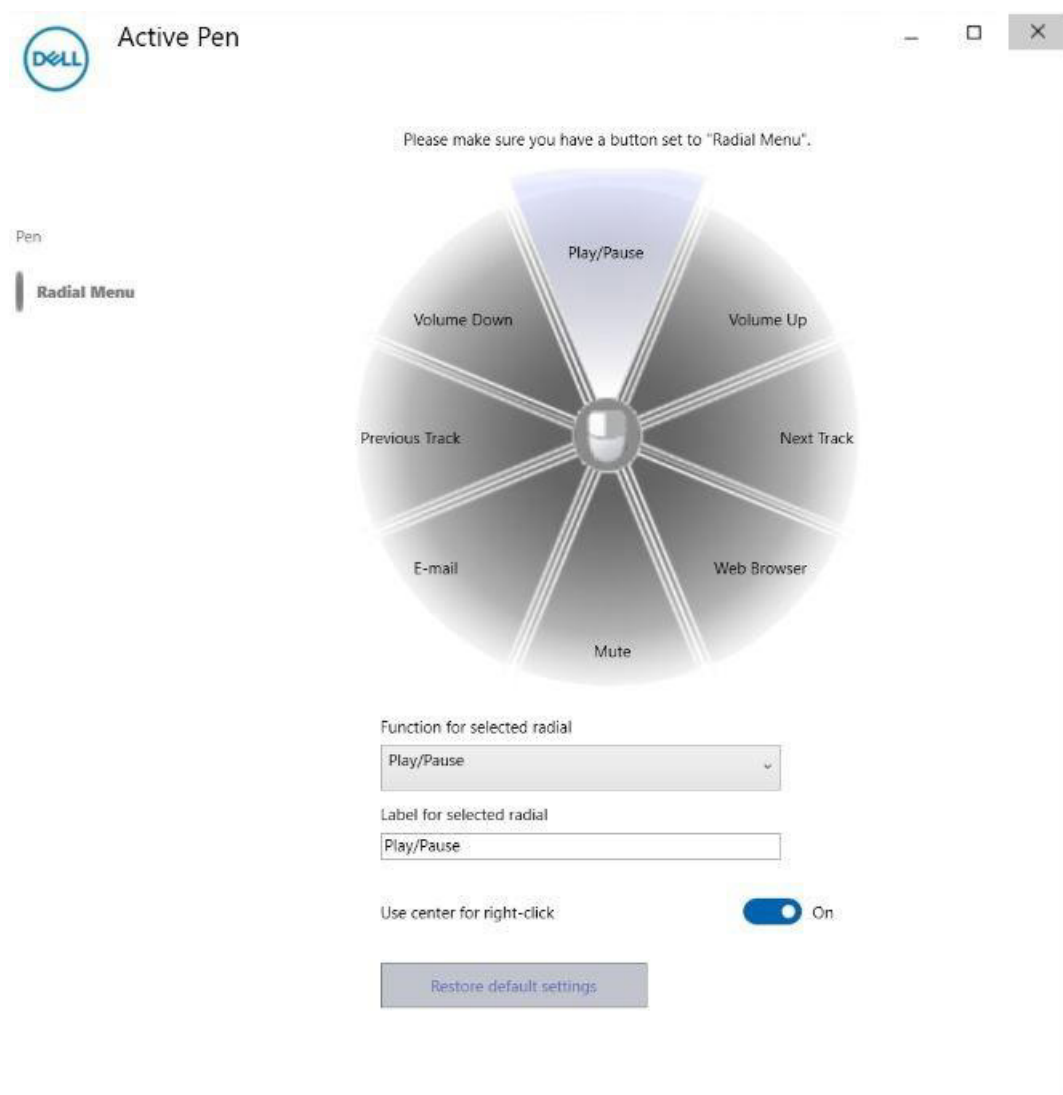
- Radial Menu
  - Erase
  - Open or Run
  - Keystrokes
  - Microsoft Cortana
  - Windows Ink Workspace
  - Sketchpad
  - Screen Sketch
  - Microsoft Sticky Notes
  - Microsoft OneNote
  - Page Up or Page Down
  - Go Back or Go Forward
  - Copy pr Paste
  - Undo or Redo
  - Switch Application
  - Wacom Settings
  - Web Browser
  - Email
  - Play or Pause
  - Next Track or Previous Track
  - Volume Up or Volume Down or Mute
- **Bottom Barrel Button:** The bottom-barrel button can be disabled or programmed to run specific applications or functions as listed below:
    - Barrel button (default)
    - Radial Menu
    - Erase
    - Open or Run
    - Keystrokes
    - Microsoft Cortana
    - Windows Ink Workspace
    - Sketchpad
    - Screen Sketch
    - Microsoft Sticky Notes
    - Microsoft OneNote
    - Page Up or Page Down
    - Go Back or Go Forward
    - Copy pr Paste
    - Undo or Redo
    - Switch Application
    - Wacom Settings
    - Web Browser
    - Email
    - Play or Pause
    - Next Track or Previous Track
    - Volume Up or Volume Down or Mute

**NOTE:** Turn on **Hover Click** to enable the selected **Bottom Barrel Button** function while hovering the tip over the screen without the tip touching the screen.

- Turn on **Show battery status in the taskbar** to show the battery status in the taskbar.
- **Pen tip sensitivity:** Move the slider to change your pen sensitivity.

#### Using the Active Pen Radial Menu





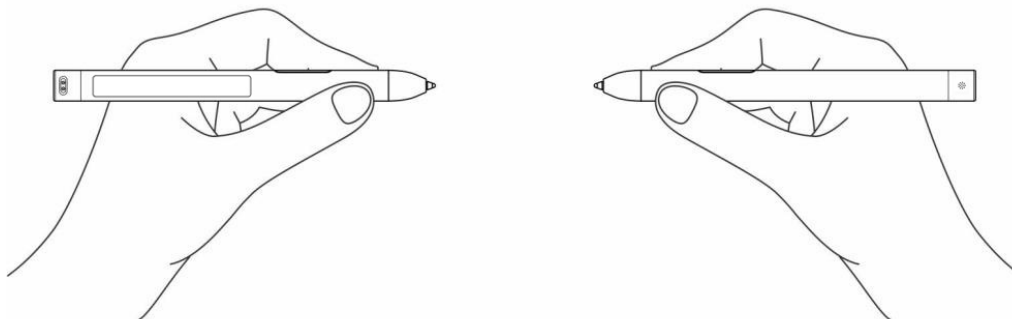
**Figure 4. Active Pen Radial Menu**

**Table 2. Radial menu**

Menu option	Function
Play/Pause	Plays or pauses a multimedia file.
Volume up	Increases the volume.
Volume down	Decreases the volume.
Previous track	Plays the previous track.
Next track	Plays the next track.
Email	Opens your mailbox.
Web browser	Opens a web browser.
Mute	Mutes the microphone or headset.
Function for selected radial	Changes the function of the selected radial.
Label for selected radial	Customize the name of the selected radial.
Use center for right-click	Enables the right-click function on the tip.
Restore default settings	Restores all settings to factory defaults.

## Holding the Latitude 7350 Detachable Active Pen

Hold the Active Pen as you hold a pencil or pen. Adjust the grip so that you can use the barrel button comfortably. Avoid the barrel buttons while drawing or positioning the Active Pen.



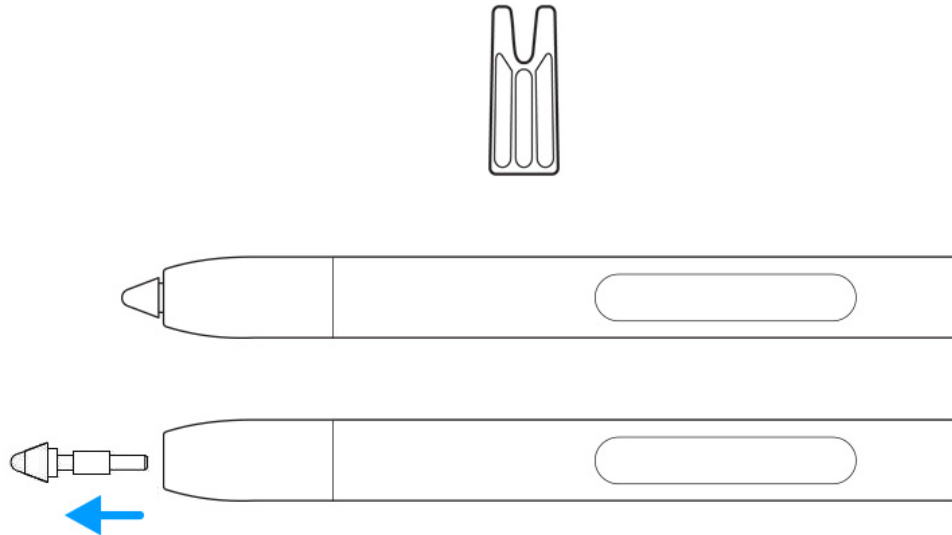
**Figure 5. Holding the Latitude 7350 Detachable Active Pen**

## Replacing the pen tip

**NOTE:** Replace the pen tip when the length reduces to approximately 1 mm (0.04 in.) or has a sharp edge.

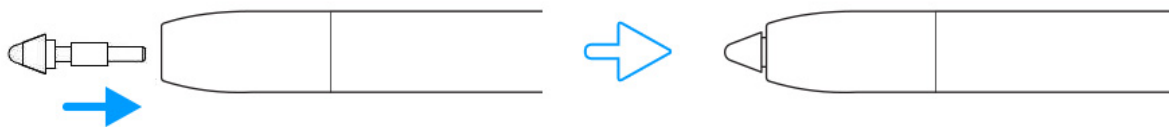
**To replace the tip:**

1. Use the tip-remover that is shipped with your device to pull the tip out of the pen.



**Figure 6. Removing the tip from the Latitude 7350 Detachable Active Pen**

2. Push in a new tip with your fingers until the tip fits snugly in the hole.



**Figure 7. Replacing the tip of the Latitude 7350 Detachable Active Pen**

# Troubleshooting

## Pen troubleshooting

**Table 3. Latitude 7350 Detachable Active Pen troubleshooting**


Issue	Possible cause	Possible solution
The pen does not work, and the barrel buttons do not trigger any action.	The battery is out of charge.	Place the pen into the Latitude 7350 Detachable Keyboard to recharge the battery.
The pen is not writing smoothly.	The pen tip is worn out.	Replace the pen tip. See <a href="#">Replacing the pen tip</a> .
The default features for the barrel buttons do not work.	The computer application does not support the features.	Test the barrel buttons in Microsoft OneNote or another application that supports these features.
The pen does not charge.	The pen may not be docked properly into the Latitude 7350 Detachable Keyboard.	<ol style="list-style-type: none"> <li>1. Dock the computer to the Latitude 7350 Detachable Keyboard.</li> <li>2. Align the pins on the pen to the pins on the keyboard and dock the pen for charging. The LED indicator on the pen lights up during charging.</li> </ol>

# Getting help and contacting Dell

## Self-help resources


You can get information and help on Dell products and services using these self-help resources:


**Table 4. Self-help resources**

Self-help resources	Resource location
Information about Dell products and services	<a href="http://www.dell.com">www.dell.com</a>
Tips	
Contact Support	In Windows search, type <code>Contact Support</code> , and press Enter.
Online help for operating system	<a href="http://www.dell.com/support/windows">www.dell.com/support/windows</a>
Dell knowledge base articles	<ol style="list-style-type: none"> <li>1. Go to <a href="http://www.dell.com/support">www.dell.com/support</a>.</li> <li>2. On the menu bar at the top of the Support page, select <b>Support &gt; Knowledge Base</b>.</li> <li>3. In the Search field on the Knowledge Base page, type the keyword, topic, or model number, and then click or tap the search icon to view the related articles.</li> </ol>

## Contacting Dell

To contact Dell for sales, technical support, or customer service issues, see [www.dell.com/contactdell](http://www.dell.com/contactdell).

 **NOTE:** Availability varies by country/region and product, and some services may not be available in your country/region.

 **NOTE:** If you do not have an active Internet connection, you can find contact information about your purchase invoice, packing slip, bill, or Dell product catalog.