

Panasonic BUSINESS



Take your office to the road with

PANASONIC CUSTOM DOCKING SOLUTIONS

TOUGHBOOK

 **PROSERVICES**

Dock & Drive

WELCOME TO TASK DEFINED TECHNOLOGY

In an increasingly mobile world, an organisation's greatest asset is its field workforce and their time. Unfortunately, it is also one of the greatest costs. However, even small time savings can generate a better return on your investment.

Custom Docking Solutions from Panasonic ProServices create harmony between your organisation's fleet vehicles and your TOUGHBOOK, helping to maximise the efficiency of your workforce. By crafting a network of mobile offices, tasks can be completed more quickly, making your workforce more productive and cost-effective.

Create the mobile office of the future

Our Custom Docking Solutions put your TOUGHBOOK devices at the heart of your vehicles. Designed to seamlessly integrate with your existing fleet, your field workforce can operate just as they would in the office, but out on the road.

Enhanced mobile functionality

- Easy access to devices or secondary screens and accessories
- Your business applications available on the move
- Antenna pass-through for optimised 3G/4G, GPS and WLAN connectivity even in remote areas, so you are always connected to HQ
- Can be ergonomically mounted on forklifts, and easily relocated
- Power management to minimise device downtime
- Peace of mind that your device is secure and compliant with all relevant safety legislation

MAXIMISE THE EFFICIENCY
OF YOUR WORKFORCE

A TAILORED SOLUTION FOR YOUR BUSINESS

Our Custom Docking Solutions can be fitted into a wide range of vehicles from cars to vans, 4x4s to emergency service vehicles and more. Even if your fleet comprises of several different vehicles, we can implement a solution that maximises the available space in each model.

...CAN BE
FITTED
INTO A WIDE
RANGE OF
VEHICLES

Easy access to your devices and applications can be provided either directly from the docked device or from a secondary screen located within arm's reach. Docks can be front-mounted, stored in the rear of the vehicle or hidden out of sight, for example, in the glove box.

We can integrate our existing docking solutions directly into your vehicles; alternatively we have engineering capability in-house to design and develop custom bracketry or a custom dock specifically for your needs.

We offer numerous possibilities.



DASH MOUNTED DOCKS

The most common location for a vehicle docked device as the user has fast access to the device and all its applications, securely, within arm's reach and without obscuring their field of vision.



REAR MOUNTED DOCKS

Rear mounted docks allow workers to use their devices out of the back of their vehicle as well as providing secure storage of devices out of sight. They can be connected to a secondary screen in the vehicle's cockpit.



FRONT MOUNTED DOCKS

Installed in the glove box, under the seat or alongside the driver, front-mounted docks are usually linked to a secondary screen to give access to job routing software while on the move.



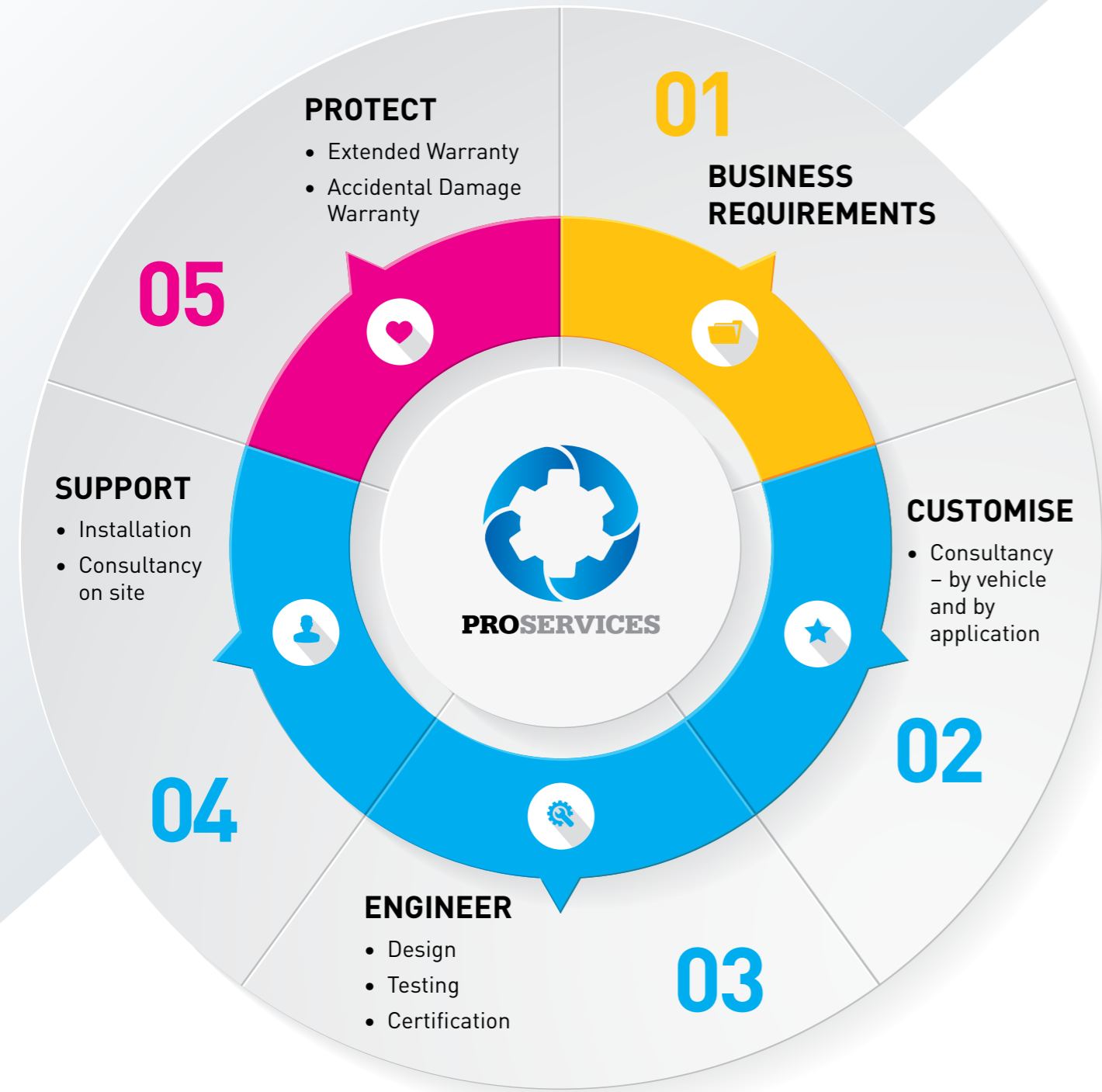
LINKED SECONDARY SCREENS

These can take the form of integrated screens in the centre console of the dash or a roof mounted pull down screen, ensuring you can keep working even when your device is docked elsewhere in the vehicle.



OUR COLLABORATIVE APPROACH

From conception to installation and beyond, we work with you every step of the way to design the perfect docking solution to meet your business requirements.



With over 10 years of experience and fitting out circa 5000 vehicles each year, our team has the capabilities and expertise to handle the entire process and ensure that all safety legislation is met, while you receive a solution that will truly transform your mobile operations.

- To get a true feel for how our vehicle solutions will benefit your operations, our team can install a complete fit-for-purpose trial installation in one or more of your vehicles.
- Also, when it's time for a tech refresh, our team ensures that as much as possible from your existing vehicle installation is reused, keeping costs to a minimum.



Our services include:

- | | | | |
|--|---|---|--|
| 
3D MEASURING
AND CAD MODELLING | 
CONCEPTUAL
PROTOTYPE CREATION | 
MANUFACTURING | 
INSTALLATION
SCHEDULING |
| 
THIRD PARTY
ACCESSORY SOURCING | 
TESTING AND
CERTIFICATION | 
MODIFICATIONS
AND REFITTING | 
OPTIONAL DIRECT SUPPORT
FOR YOUR FLEET |

**YOU RECEIVE
A SOLUTION
THAT WILL
TRULY
TRANSFORM
YOUR MOBILE
OPERATIONS**

THE DOCKING SOLUTION RANGE

Ergonomically designed and rigorously tested, our fully rugged docking stations perfectly complement our rugged TOUGHBOOK devices. With a range of ports and optional dual antenna pass-through available on most, connectivity and workforce efficiency is maximised.



TOUGHBOOK D1 Dock (Gamber-Johnson)

Part no.: PCPE-GJD1V01-02

PORTS:

- 16V DC-in
- 1 x USB 3.0
- 5 x USB 2.0
- 1 x LAN
- 1 x VGA
- 1 x HDMI
- 1 x Serial
- 1 x Microphone
- 1 x Headphone
- Dual antenna pass-through (optional)
- External antenna select switch

DIMENSIONS:

372 x 268 x 121 mm

WEIGHT: 3.4 kg

All configurations supported



TOUGHBOOK 54 Dock (Gamber-Johnson)

Part no.: PCPE-GJ54V01-03

PORTS:

- 16V DC-in
- 2 x USB 3.0
- 1 x LAN
- 1 x VGA
- 1 x HDMI
- 1 x Serial
- Dual antenna pass-through (optional)
- External antenna select switch

DIMENSIONS:

342 x 301 x 89 mm

WEIGHT: 2.5 kg

Configurations supported:

TOUGHBOOK 54 Performance model and all models with the following integrated options: Insertable SmartCard (bottom), 2nd LAN, 4th USB (2.0), rugged Fischer USB, VGA and Serial.



TOUGHBOOK 54 Dock (Havis)

Part no.: PCPE-HAV5401-03

PORTS:

- 16V DC-in
- 2 x USB 3.0
- 1 x LAN
- 1 x VGA
- 1 x HDMI
- 1 x Serial
- Dual antenna pass-through (optional)
- External antenna select switch

DIMENSIONS:

384 x 348 x 76 mm

WEIGHT: 2.45 kg

All configurations supported



TOUGHBOOK 33 Tablet Dock (Gamber-Johnson)

Part no.: PCPE-GJ33V01-05

PORTS:

- 16V DC-in
- 4 x USB 2.0
- 2 x USB 3.0
- 2 x LAN
- 1 x VGA†
- 1 x HDMI†
- 1 x serial
- Dual antenna pass-through (optional)
- External antenna select switch

DIMENSIONS:

318 x 337 x 114 mm

WEIGHT: 1.9 kg

All configurations supported



TOUGHBOOK 33 Clamshell Dock (Gamber-Johnson)

Part no.: PCPE-GJ33V06-08

PORTS:

- 16V DC-in
- 4 x USB 2.0
- 2 x USB 3.0
- 2 x LAN
- 1 x VGA
- 1 x HDMI
- 1 x serial
- Dual antenna pass-through (optional)
- External antenna select switch

DIMENSIONS:

358 x 343 x 84 mm

WEIGHT: 2.8 kg

All configurations supported



TOUGHBOOK 33 Slim Tablet Dock (Gamber-Johnson)

Part no.: PCPE-GJ33V09-12

PORTS:

- 16V DC-in
- 4 x USB 2.0
- 2 x USB 3.0
- 2 x LAN
- 1 x VGA†
- 1 x HDMI†
- 1 x Serial
- Dual antenna pass-through (optional)
- External antenna select switch

DIMENSIONS:

312 x 274 x 76 mm

WEIGHT: 2.7 kg

Standard configuration only supported.



TOUGHBOOK 20 Clamshell Dock (Havis)

Part no.: PCPE-HAV2003/05/06

PORTS:

- 16V DC-in
- 2 x USB 3.0
- 1 x LAN
- 1 x VGA
- 1 x HDMI
- 1 x Serial
- Dual antenna pass-through (optional)
- External antenna select switch

DIMENSIONS:

281 x 244 x 64 mm

WEIGHT: 1.95 kg

All configurations supported



TOUGHBOOK 20 Clamshell Dock (Gamber-Johnson)

Part no.: PCPE-GJ20V07-09

PORTS:

- 16V DC-in
- 2 x USB 3.0
- 1 x LAN
- 1 x VGA
- 1 x HDMI
- 1 x Serial
- Dual antenna pass-through (optional)
- External antenna select switch

DIMENSIONS:

295 x 256 x 63 mm

WEIGHT: 2.3 kg

All configurations supported



TOUGHBOOK A2/20 Tablet Slim Dock (Gamber-Johnson)

Part no.: PCPE-GJA2V01-05

PORTS:

- 16V DC-in
- 2 x USB 2.0
- 1 x LAN
- Dual antenna pass-through (optional)
- External antenna select switch

DIMENSIONS:

297 x 269 x 76 mm

WEIGHT: 1 kg

All configurations supported



TOUGHBOOK A2/20 Tablet Expanded Dock (Gamber-Johnson)

Part no.: PCPE-GJA2V06-10

PORTS:

- 16V DC-in
- 2 x USB 2.0
- 1 x LAN
- Dual antenna pass-through (optional)
- External antenna select switch

DIMENSIONS:

297 x 259 x 109 mm

WEIGHT: 1.4 kg

Configurations supported:

Dock design accommodates the rotating hand strap and large battery pack accessories. Compatible with TOUGHBOOK A2 and versions of the TOUGHBOOK 20 large gadget options.



TOUGHBOOK 33 Clamshell Dock (Havis)

Part no.: PCPE-HAV3301-03

PORTS:

- 16V DC-in
- 4 x USB 2.0
- 2 x USB 3.0
- 2 x LAN
- 1 x VGA
- 1 x HDMI
- 1 x serial
- Dual antenna pass-through (optional)
- External antenna select switch

DIMENSIONS:

318 x 298 x 69 mm

WEIGHT: 2.4 kg

All configurations supported



TOUGHBOOK 33 Tablet Dock (Havis)

Part no.: PCPE-HAV3305-10

PORTS:

- 16V DC-in
- 2 x USB 3.0
- 4 x USB 2.0
- 2 x LAN
- 1 x VGA
- 1 x HDMI
- 1 x Serial
- Dual antenna pass-through (optional)
- External antenna select switch

DIMENSIONS:

314.4 x 291.5 x 88.9 mm

WEIGHT: 1.25 kg

All configurations supported



TOUGHBOOK G1 Dock (Havis)

Part no.: PCPE-HAVG101-02

PORTS:

- 16V DC-in
- 2 x USB 3.0
- 1 x LAN
- 1 x VGA
- 1 x HDMI
- 1 x Serial
- Dual antenna pass-through (optional)
- External antenna select switch

DIMENSIONS:

255 x 289 x 111 mm

WEIGHT: 1 kg

All configurations supported

TOUGHBOOK G1 Standard Dock (Gamber-Johnson)

Part no.: PCPE-GJG1V01-06

PORTS:

- 16V DC-in
- 2 x USB 3.0
- 1 x LAN
- 1 x VGA
- 1 x HDMI
- 1 x Serial
- Dual antenna pass-through (optional)
- External antenna select switch

DIMENSIONS:

285 x 251 x 97 mm

WEIGHT: 0.9 kg

All configurations supported

TOUGHBOOK G1 Slim Dock

Part no.: CF-CDSG1SD01-04

PORTS:

- 16V DC-in
- 2 x USB 3.0
- 1 x LAN
- 1 x VGA
- 1 x HDMI
- 1 x Serial
- Dual antenna pass-through (optional)
- External antenna select switch

DIMENSIONS:

284 x 237 x 63 mm

WEIGHT: 1.2 kg

Configurations not supported:
FZ-G1 with medium and large corner guards.
*Includes locking mechanism.

TOUGHBOOK M1/B2 Dock (Havis)

Part no.: PCPE-HAVM101-04

PORTS:

- 16V DC-in
- 2 x USB 3.0
- 1 x LAN
- 1 x VGA
- 1 x HDMI
- 1 x Serial
- Dual antenna pass-through (optional)
- External antenna select switch

DIMENSIONS:

218 x 201 x 76 mm

WEIGHT: 0.71 kg

All configurations supported

TOUGHBOOK L1 Dock (Havis)

Part no.: PCPE-HAVL101-03

PORTS:

- 5V DC-in
- 1 x USB 2.0
- Dual antenna pass-through (optional)
- External antenna select switch

DIMENSIONS:

201 x 180 x 62 mm

WEIGHT: 0.45 kg

Configurations not supported:
Top barcode reader; hand strap

TOUGHBOOK L1 Dock (Gamber-Johnson)

Part no.: PCPE-GJL1V01-03

PORTS:

- 5V DC-in
- 1 x USB 2.0
- Dual antenna pass-through (optional)
- External antenna select switch

DIMENSIONS:

90 x 183 x 203 mm

WEIGHT: 0.68 kg

All configurations supported



TOUGHBOOK M1 Standard Dock (Gamber-Johnson)

Part no.: PCPE-GJM1V01-02

PORTS:

- 16V DC-in
- 2 x USB 3.0
- 1 x LAN
- 1 x VGA
- 1 x HDMI
- 1 x Serial
- Dual antenna pass-through (optional)
- External antenna select switch

DIMENSIONS:

206 x 245 x 91 mm

WEIGHT: 1.1 kg

All configurations supported

TOUGHBOOK M1/B2 Value Dock (Gamber-Johnson)

Part no.: PCPE-GJM1V03-05

PORTS:

- 16V DC-in
- 2 x USB 2.0
- 1 x LAN
- Dual antenna pass-through (optional)
- External antenna select switch

DIMENSIONS:

206 x 245 x 91 mm

WEIGHT: 1.1 kg

All configurations supported

TOUGHBOOK M1/B2 Lite Dock (Gamber-Johnson)

Part no.: PCPE-OCM1CD 1/3/4

PORTS:

- 16V DC-in
- 2 x USB 2.0
- 1 x LAN
- Dual antenna pass-through (optional)
- External antenna select switch

DIMENSIONS:

188 x 222 x 133 mm (Non electronic version: 188 x 222 x 76 mm)

WEIGHT: 0.59 kg

Configurations not supported:
Barcode reader, serial port, smartcard reader, NFC, UHC/RFID, hand strap, hot-swappable battery, stylus.

TOUGHBOOK N1 Dock (Gamber-Johnson)

Part no.: PCPE-GJN1V01-04

PORTS:

- 16V DC-in
- Non-electronic version available

DIMENSIONS:

115 x 190 x 90 mm

WEIGHT: 0.3 kg

All configurations supported

TOUGHBOOK T1 Dock (Gamber-Johnson)

Part no.: PCPE-GJT1V01-02

PORTS:

- 5V DC-in
- Non-electronic version available

DIMENSIONS:

86 x 210 x 64 mm

WEIGHT: 0.18 kg

All configurations supported



DRIVE WORKFORCE EFFICIENCY WITH CUSTOM DOCKING SOLUTIONS FROM PANASONIC PROSERVICES

When integrated into your fleet of vehicles, our TOUGHBOOK devices are capable of so much more. Transform how your field workforce operates out on the road and challenge us to create a Custom Docking Solution that not only improves productivity, but reduces costs as well.

**Contact your Panasonic Representative today,
you will be amazed by what is possible.**

**ProServices@eu.panasonic.com
www.toughbook.eu/ProServices/CDS**