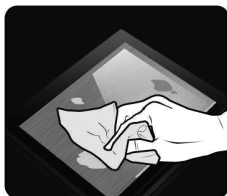




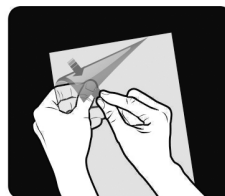
5 6 1 8 8 7 1 9 0 0 0 7 R 0 0

01.



Clean the screen thoroughly with the special cleaning cloth (supplied with your computer). Make sure there is not any dust, lint, fingerprints, or other particles on the screen surface.

02.



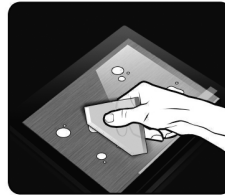
Pull the transparent tab to peel the backing layer off the film about 1½ inch along one edge. Do not peel off the entire piece at one time.

03.



Align the film (adhesive side facing down) with the screen edge and attach the exposed part of the film to the screen. Continue to apply across the screen while peeling off the backing layer a little at a time.

04.



Use the applicator (included) to smooth the film as you work your way across the screen. Remove any remaining air bubbles by pushing them toward the outer edge of the film with the applicator.

05.



Pull the green colored tab and remove the top layer slowly.