

Windows 11 Installation

Lenovo ThinkStation P2 Tower Gen 2





Table of Contents

Overview 3

Section 1 – BIOS & Pre-Installation Steps.....4

Section 2 – Windows Installation.....9

Section 3 – Revision History 15

Overview

The purpose of this document is to provide guidance for users on how to install a Windows 10 or Windows 11 retail operating system on the ThinkStation P2 system.

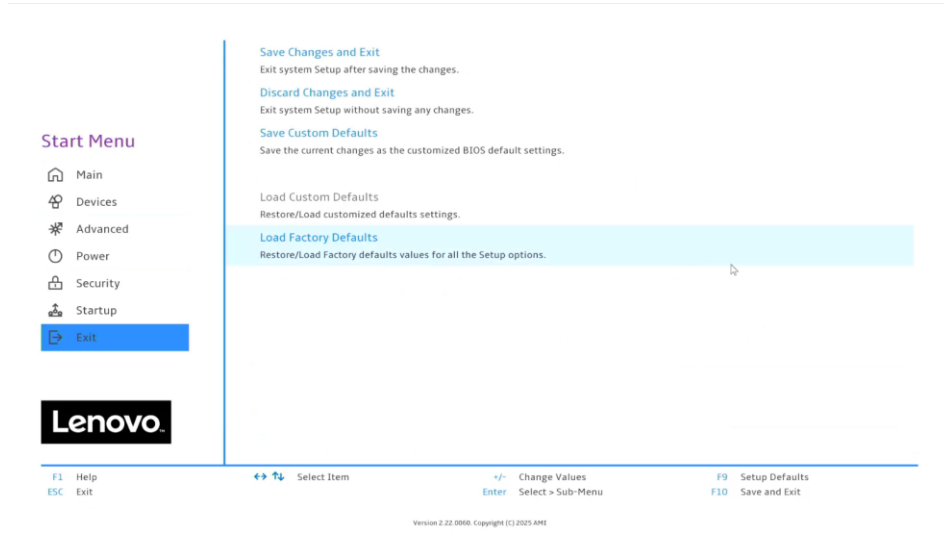
Section 1 – BIOS & Pre-Installation Steps

The first step before installing Windows is to make sure BIOS is set up correctly. It is important to ensure that the BIOS is set to the optimum (default) settings before beginning the installation.

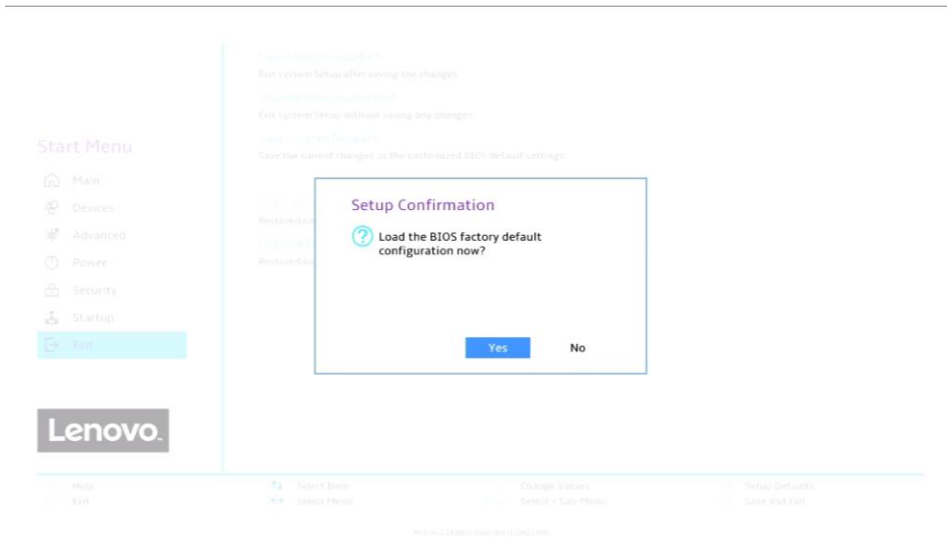
1. Boot into BIOS by pressing the F1 key at the “Lenovo” splash screen.



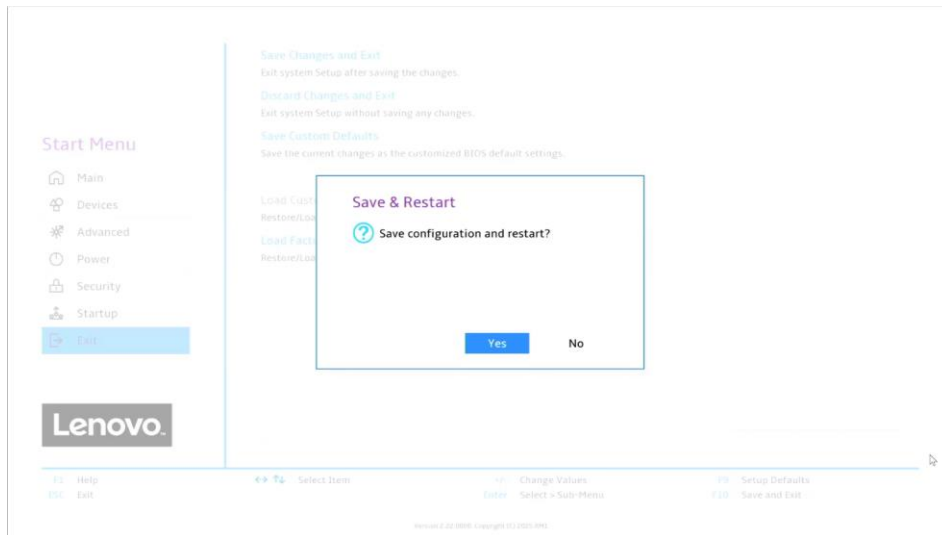
2. Once in the BIOS Press F9 to load the optimal default BIOS settings or select the “Exit” menu option along the left column and then select “Load Optimal Defaults” and select “Yes” at the prompt.



3. Select “Yes” in the confirmation window.

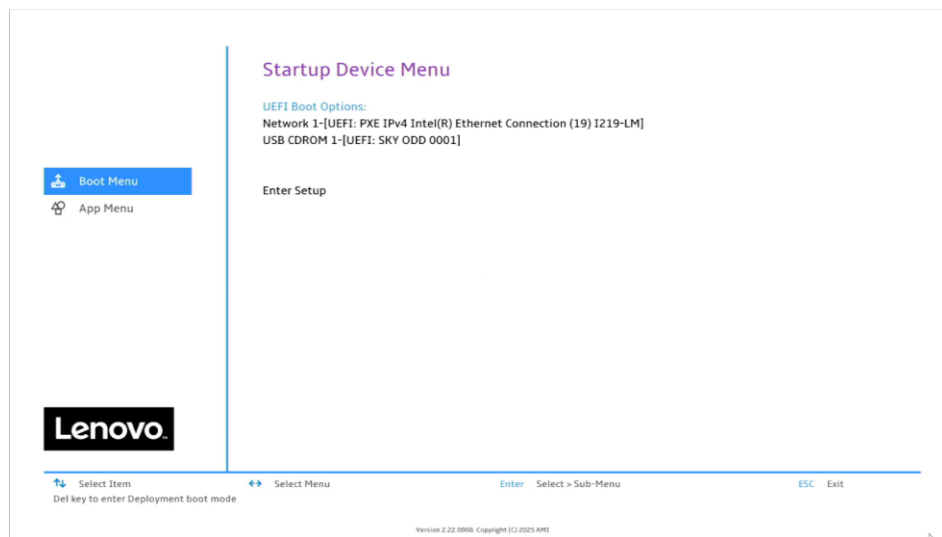


4. Select F10 to “Save and Exit” BIOS.

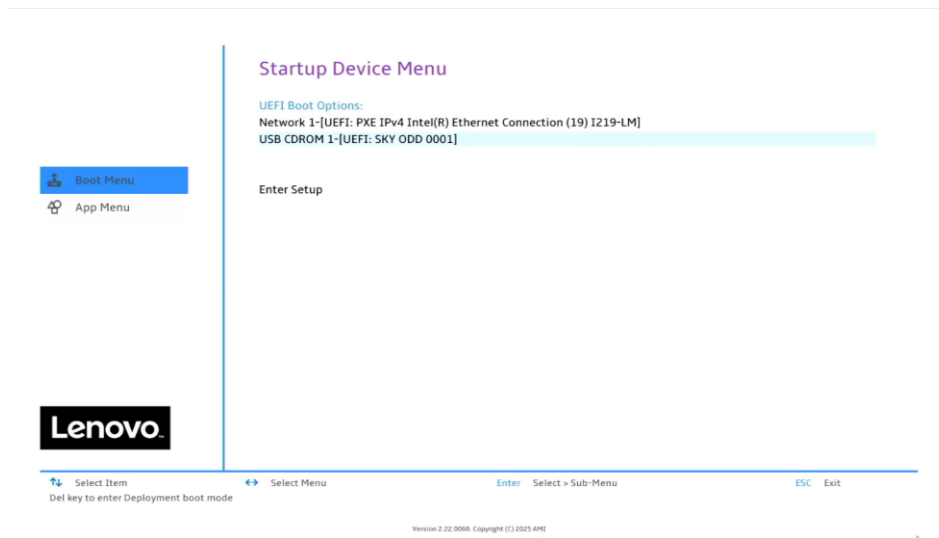


5. Insert the Windows install media (either through USB or CD/DVD).

6. Power on the system and press the F12 key whenever the following Lenovo splash screen appears.

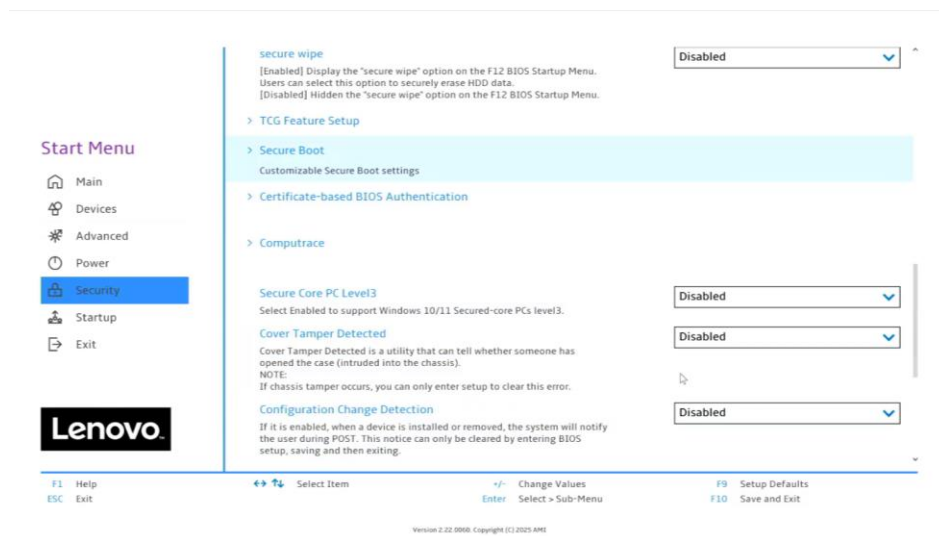


7. Select the proper Windows bootable installation media option from the F12 boot menu. Not all drives are seen in this menu, only bootable options are shown currently.

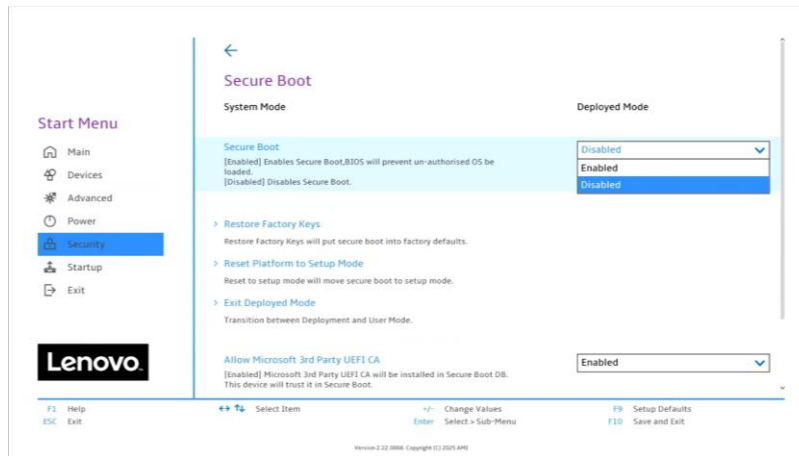


Note: Legacy boot is no longer supported on the P2 Tower Gen 2 platforms. Only UEFI bootable options will be available.

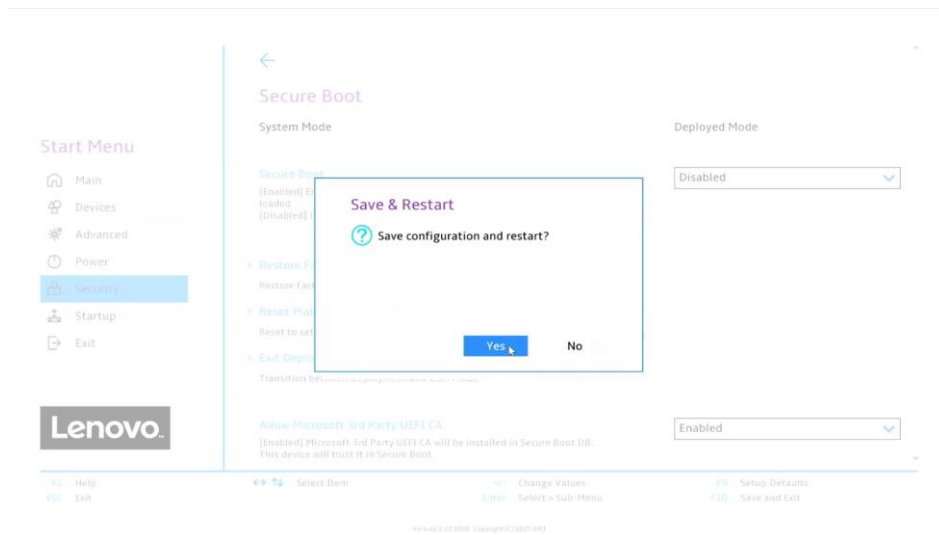
8. If the system fails to boot to the selected startup device, it may be necessary to disable Secure Boot in the BIOS. Boot into BIOS using F1. From the main menu select “Security” and under “Security” scroll down the list on the right and select “Secure Boot”.



9. In the drop-down box select “Disabled”.



10. Select F10 to “Save and Exit” BIOS.

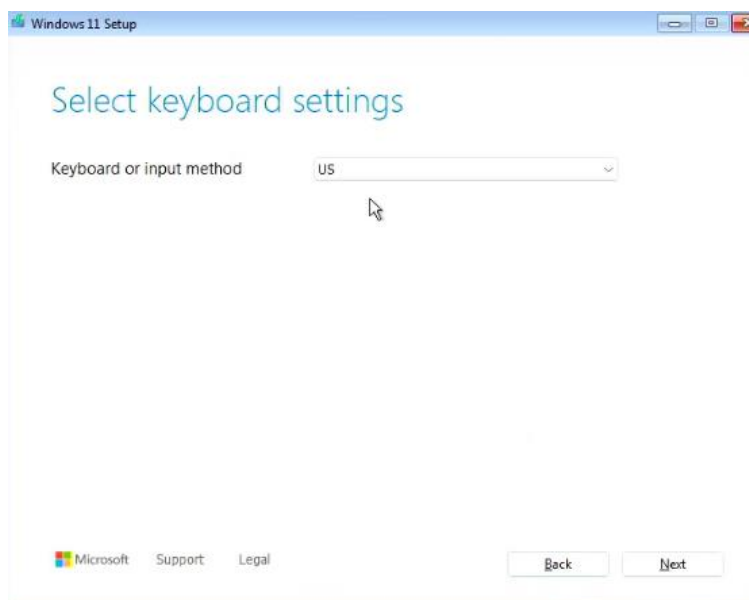
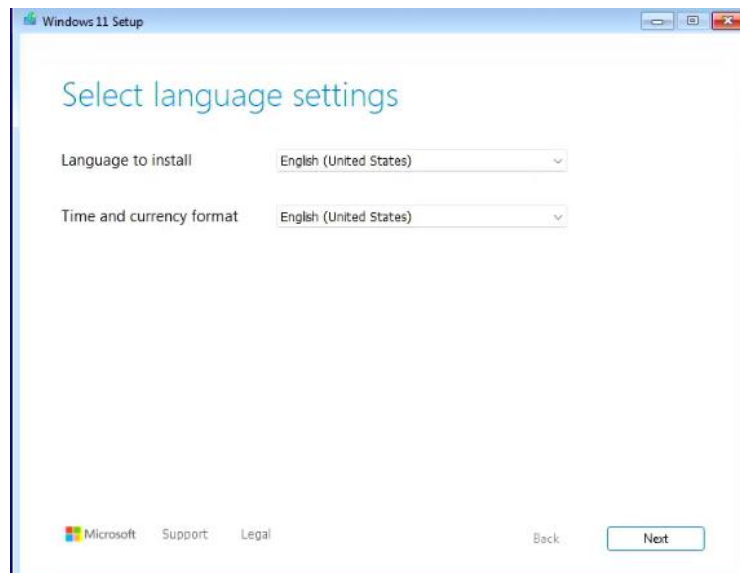


11. Repeat steps 5-7.

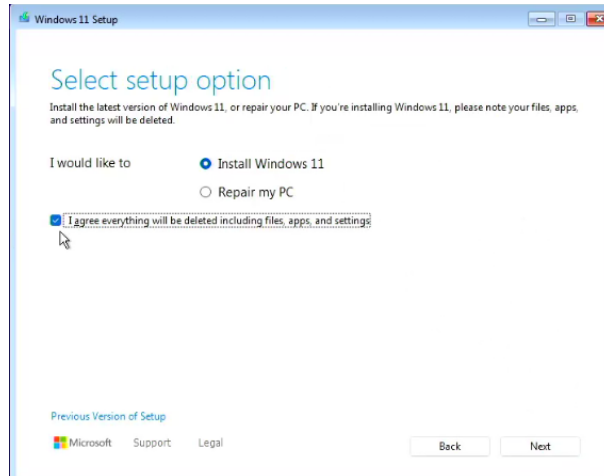
Section 2 – Windows Installation

Follow the steps below to proceed with the Windows installation. The screens for Windows 11 installation are similar except for the selection of the Windows edition to be used.

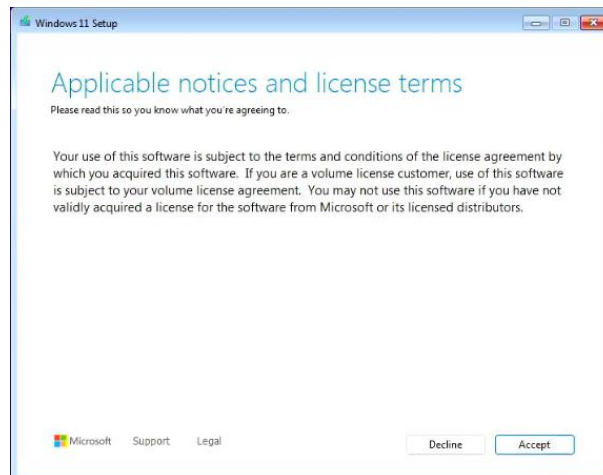
1. Select the following Language, Time, and Keyboard Layout and select “Next”.



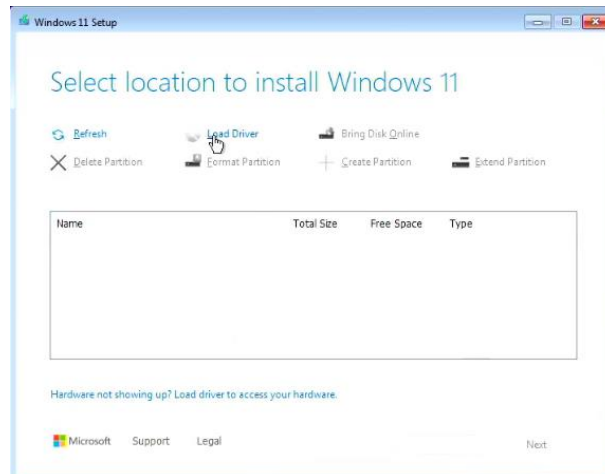
2. Select “Install Windows 11” option.



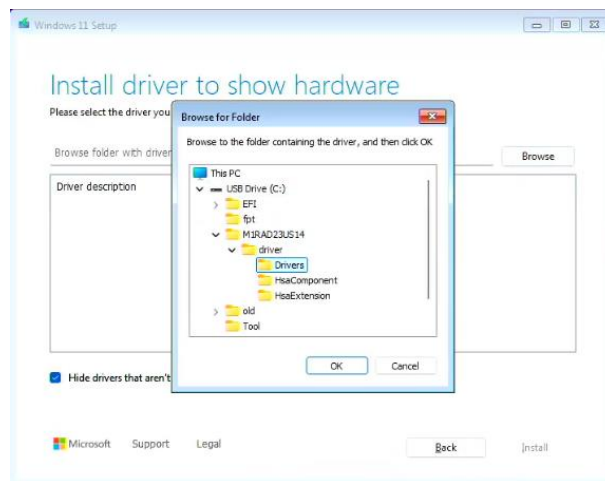
3. Check the box next to “I accept the license terms” and select “Next”.



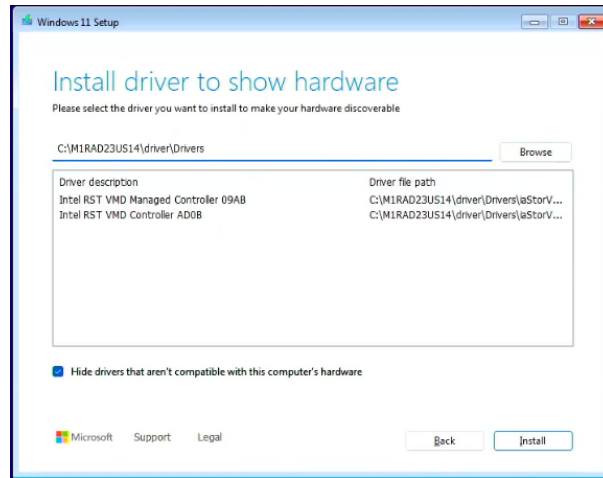
4. If the system drives are configured using RAID, the drives may not be seen in this step, or they may not display properly. If so, it will be necessary to download the proper RAID controller drivers from the Lenovo support site. The drivers can be copied to a USB key and added during this step in the installation. Once the USB key has been inserted into one of the system USB ports, select “Load Driver”.



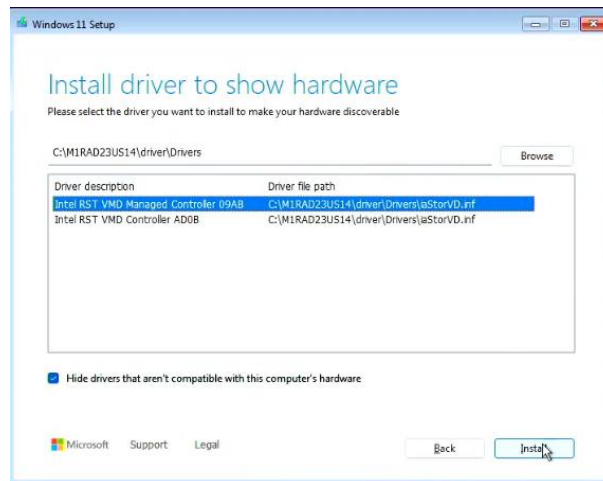
5. Select “Browse” to find the driver.



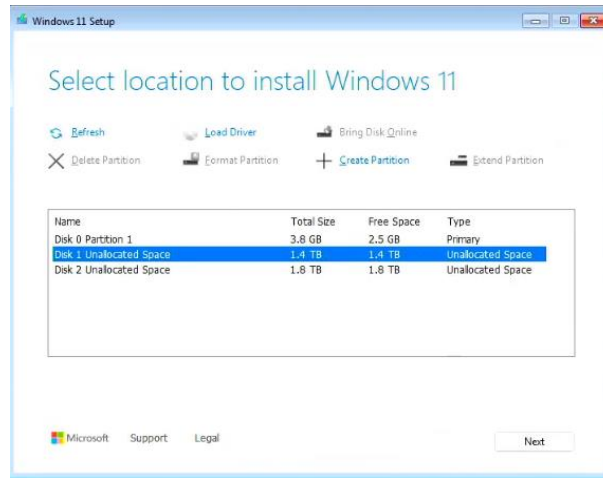
- Expand the USB drive and select the folder that has the Intel RAID drivers that were added in step 6. Directory names may vary based on driver versions.



- Verify that the system has identified the drivers necessary for the RAID array and select "Next". Exact Driver names may vary based on the system and driver version.



8. Verify that the drive can now be seen properly. Select the target drive and then select “Next” to continue loading Windows 11. If the drive cannot be seen, repeat steps 7-9 and try a different driver if others are available.

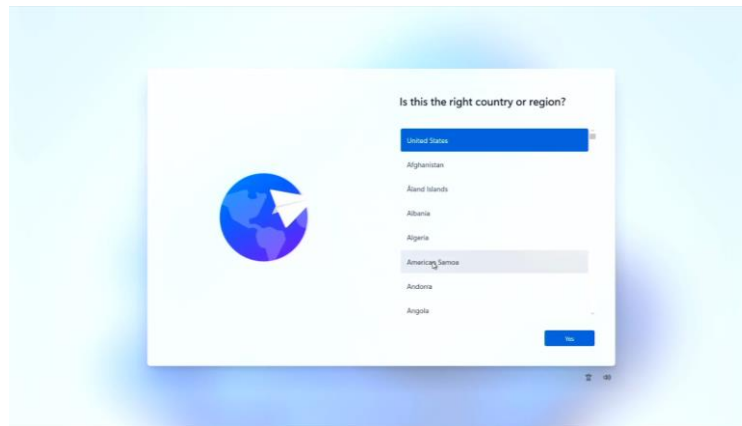


9. The “Installing Windows” screen.



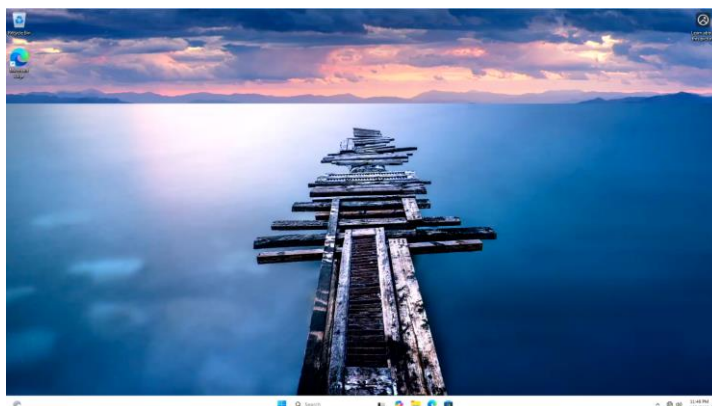
10. After the installation is completed, the system will automatically reboot. The system should boot into Windows setup for the user to select regional and privacy preferences. The screens for this process can change periodically as newer versions of Windows are released. Make the appropriate personal choices for each selection to complete the Windows setup.

Note: It may be necessary to remove the installation media to prevent the system from restarting the Windows installation.



11. At this point, it will be necessary to download and install the appropriate device specific drivers. With a clean Windows installation these will typically include the Chipset Device Software driver, the GPU specific Video adapter driver, and the appropriate network device driver. Any additional peripherals added to the system should also be configured with the proper device drivers. The device drivers for all Lenovo systems and supported peripherals can be found on the Lenovo Support website.

Windows 11 Default Desktop



Section 3 – Revision History

Version	Date	Author	Changes/Updates
1.0	6/18/25	Zhu Zheng	Initial Release