



Product End-of-Life Disassembly Instructions

Product Category: Workstation

Marketing Name / Model
[List multiple models if applicable.]

HP Z8 Fury G5 Workstation

FCLSA-2204A

FCLSA-2204B

Purpose: The document is intended for use by end-of-life recyclers or treatment facilities. It provides the basic instructions for the disassembly of HP Inc. products to remove components and materials requiring selective treatment, as defined by EU directive 2012/19/EC, Waste Electrical and Electronic Equipment (WEEE).

NOTE: Recyclers should sort plastic materials into resin streams for recycling based on the ISO 11469 plastic marking code on the plastic part. For any questions on plastic marking or identification of location of parts or components requiring selective treatment, please contact [HP's Sustainability Contact](#).

1.0 Items Requiring Selective Treatment

1.1 Items listed below are classified as requiring selective treatment. An "X" in the list of components and parts indicates the product contains the component or part requiring selective treatment

Item Description	Components and parts requiring selective treatments	Quantity of items included in product
Printed Circuit Boards (PCB) or Printed Circuit Assemblies (PCA) with a surface greater than 10 sq cm	<input checked="" type="checkbox"/> Main board (MB) PCB*1 <input checked="" type="checkbox"/> Solid state drive (SSD) PCB*2 <input type="checkbox"/> Wireless WAN module (WWAN) PCB <input type="checkbox"/> Touch module PCB <input checked="" type="checkbox"/> Power supply PCB*1 <input checked="" type="checkbox"/> External Keyboard (KB)*1 <input checked="" type="checkbox"/> External Mouse*1 <input checked="" type="checkbox"/> Graphic card PCB *1, <input checked="" type="checkbox"/> Transfer card*1, <input checked="" type="checkbox"/> Switch card*1 <input checked="" type="checkbox"/> PDB board PCB*1 <input checked="" type="checkbox"/> Memory PCB*4 <input checked="" type="checkbox"/> HDD PCB*1	15
Batteries, excluding Li-Ion batteries. This includes standard alkaline, coin or button style batteries	<input checked="" type="checkbox"/> RTC/CMOS battery <input type="checkbox"/> Others: _____	1
Li-Ion batteries. Includes all Li-Ion batteries if more than one is provided with the product (such as a detachable notebook keyboard battery, etc.)	Li-ion battery(ies) are attached to the product by: <input type="checkbox"/> screws <input type="checkbox"/> snaps <input type="checkbox"/> adhesive <input type="checkbox"/> other. Explain _____	0

Item Description	Components and parts requiring selective treatments	Quantity of items included in product
Mercury-containing components. For example, mercury in lamps, display backlights, scanner lamps, switches, batteries		0
Liquid Crystal Displays (LCD) with a surface greater than 100 sq cm. Includes background illuminated displays with gas discharge lamps	<input type="checkbox"/> Panel LCD	0
Cathode Ray Tubes (CRT)		0
Capacitors / condensers (Containing PCB/PCT)		0
Electrolytic Capacitors / Condensers measuring greater than 2.5 cm in diameter or height	<input checked="" type="checkbox"/> Power Supply capacitor(s) or condenser(s)	4
External electrical cables and cords	<input checked="" type="checkbox"/> AC power cord <input type="checkbox"/> Audio, video or data cables <input type="checkbox"/> Other: _____	1
Gas Discharge Lamps		0
Plastics containing Brominated Flame Retardants (not including external electrical cables and cords, PCBs or PCAs already listed as a separate item above)		0
Components and parts containing toner and ink, including liquids, semi-liquids (gel/paste) and toner. Include the cartridges, print heads, tubes, vent chambers, and service stations.		0
Components and waste containing asbestos		0
Components, parts and materials containing refractory ceramic fibers		0
Components, parts and materials containing radioactive substances		0
Components containing chlorofluorocarbons (CFC), hydrochlorofluorocarbons (HCFC) or hydrofluorocarbons (HFC), hydrocarbons (HC)		0

2.0 Tools Required

List the type and size of the tools that would typically be used to disassemble the product to a point where components and materials requiring selective treatment can be removed.

Tool Description	Tool Size (if applicable)
Screwdriver	Philip #0
Screwdriver	Torx T8
Heat gun	N/A
Suction cup	N/A

3.0 Product Disassembly Process

EL-MF877-00

Template Revision **D**

Page 2

last updated May-2022

HP Inc. instructions for this template are available at [EL-MF877-01](#)

3.1 List the basic steps that should typically be followed to remove components and materials requiring selective treatment including the required steps to remove the external enclosure.

1. Open and remove the access panel from chassis
2. Remove the PCIe retainer from chassis
3. Remove the CPU fan duct frame
4. Press the latch and push the top PCI card duct out
5. Loosen the screws and remove the CPU fan duct latch
6. Press the two sides of buttons and remove the cooler fan duct
7. Remove the cooler fan from duct
8. Disconnect the graphic card cable and remove the graphic card from MB
9. Remove the 4 pcs memories from MB
10. Disconnect the ODD SATA/Power cable from ODD
11. Remove the ODD from chassis
12. Loosen the HDD bracket
13. Remove the HDD bracket from the Chassis
14. Remove the HDD from HDD bracket by push out the HDD bracket
15. Disconnect the PCIe power cable from PCIe fan guide.
16. Disconnect the front middle chassis fan cable
17. Disconnect the front lower chassis fan cable
18. Press the guide and remove the PCIe fan guide from chassis
19. Remove the front lower chassis fan from fan guide
20. Remove the front middle chassis fan from fan guide
21. All the parts of PCIe fan guide
22. Remove the rear system fan duct from hook
23. Disconnect rear system fan cable from MB
24. Remove the fan guard from fan guard
25. Press the clip and remove the transfer card
26. Loosen the 2pcs screws and remove the 2pcs SSD
27. Lift the latch and slide to the left (in the direction of rear IO)
28. Remove the guide bracket,
29. Disconnect the front upper chassis fan cable
30. Press the guide and remove the front upper chassis fan and fan guard
31. Remove the fan guard from fan
32. Detailed parts on the assembly of chassis front upper chassis fan guide assembly
33. Disconnect the switch card cable
34. Remove the switch card from Chassis
35. Loosen the screws(x2) of speaker and release speaker
36. Disconnect the speaker cable from switch card
37. Release the front panel mount cable from clip
38. Disconnect the front panel mount cable from switch card
39. Release the front panel mount cable by push out 2 pins fixed front side in switch card tray.
40. Release the front panel mount cable by push out 2 pins fixed black side in switch card tray
41. Loosen the 4pcs switch card PCA screws and remove the switch card PCA
42. Remove the SD card reader carrier
43. Loosen the left and right side right hooks of switch card panel
44. Loosen the 2pcs bottom side hooks of switch card panel
45. Detailed parts of switch card assembly
46. Remove the 3pcs HDD brackets from chassis.
47. Remove ODD housing from chassis
48. Disconnect the CPU cooler cable from motherboard
49. Remove the CPU cooler from motherboard
50. Press the bottom and remove the CPU cooler from MB
51. Remove the CPU from the cooler
52. Remove the CPU from the carrier
53. Press the bottom and remove the 2 pcs PSU

EL-MF877-00

Template Revision **D**

Page 3

last updated May-2022

HP Inc. instructions for this template are available at [EL-MF877-01](#)

54. Cut off the cable ties on front upper in chassis
55. Loosen the 2pcs screws and remove the heat sink
56. Disconnect all other cables from motherboard
57. Remove the MB from chassis
58. Remove the battery from motherboard
59. Release 2pcs screws of right side panel.
60. Cut off 5 pcs cable ties to fix power cable
61. Unlock 4pcs screws of PDB
62. Disconnect the H1 power cable and blind mating SATA power cable
63. Release the Blind mating SATA connector from chassis
64. Cut off cable tie and remove blind mating SATA cable
65. Loosen the screw and remove interlock bracket
66. Loosen the screw, cable and interlock bracket
67. Push up 2pcs inside latches to release hood sensor bracket from chassis
68. Release 2pcs latches of top bezel and remove it
69. Release clasp of front bezel on bottom side of chassis and remove the bezel
70. Remove the left side plastic parts of corner bracket pocket by release the clasp
71. Remove the right side plastic parts of front side handle pocket by release 2pcs latches
72. Unlock 4pcs screwsfront side handle
73. Release 2pcs latches of front side handle pocket
74. Remove the handle pocket and details of front side handle pocket
75. Unlock 2pcs screwsfront side handle
76. Release 3pcs latches of rear handle pocket
77. Remove the handle pocket and details of front side handle pocket
78. Remove the PCIe slot covers (x7) from chassis
79. Unlock bottom side screw of ODD bracket cover
80. Remove the bottom side spring of ODD bracket cover
81. Unlock top side screw of ODD bracket cover
82. Remove the ODD bracket cover
83. Unplugging
84. Unfasten seven screws
85. Push top cover on right hand side to make sure four snap in come off
86. Take top cover away.
87. Remove top Mylar, latch-cover and foam sheet from top cover
88. Remove the small Mylar
89. Unfasten GND screw
90. Put AC socket cable outside to see PCBA screw
91. Unfasten six screws
92. Disconnect 3mm LED cable and fan cable from daughter board
93. Take out PCBA with AC socket cable from bottom chassis
94. Unfasten two screws
95. Take out fan from bottom chassis
96. Unfasten screw
97. Take out LED & S/W sub-assembly with cable from bottom chassis
98. Remove bottom Mylar and two pads from bottom chassis.
99. Identity PCBA > 10 cm² for further treatment (main board: 324.6 cm²).
- 100 Identity PCBA > 10 cm² for further treatment (daughter board: 32.5 cm²).
- 101 Identity PCBA > 10 cm² for further treatment (daughter board: 24.0 cm²).
- 102 Identity electrolyte capacitor > 2.5 cm for further treatment (Length: 4.5 cm)
- 103 Identity electrolyte capacitor > 2.5 cm for further treatment (Length: 4.5 cm).

3.2 Location of components requiring selective treatment. The photos and/or graphics below identify the location of the parts or components requiring selective treatment within the main unit. For End-of-Life product disassembly instructions of

external accessories including external power supply (EPS), external keyboard (KB) external mouse and external cables and cords, refer to the following URL: [End-of-Life Product Disassembly Instructions \(hp.com\)](https://www.hp.com/End-of-Life-Product-Disassembly-Instructions)

Figure1 Open and remove the access panel from chassis.



Figure2 Remove the PCIe retainer from chassis.



Figure3 Remove the CPU fan duct frame.



Figure4 Press the latch and push the top PCI card duct out.

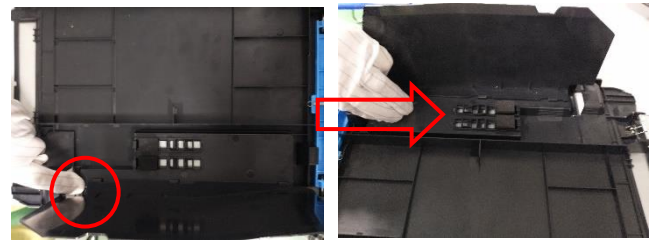


Figure5 Loosen the screws and remove the CPU fan duct latch.

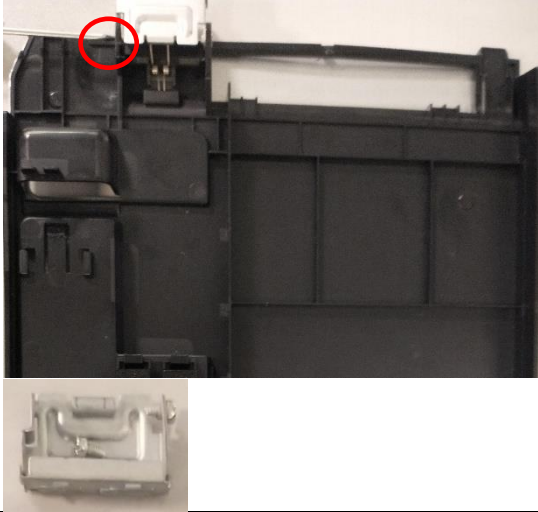


Figure6 Press the two sides of buttons and remove the cooler fan duct

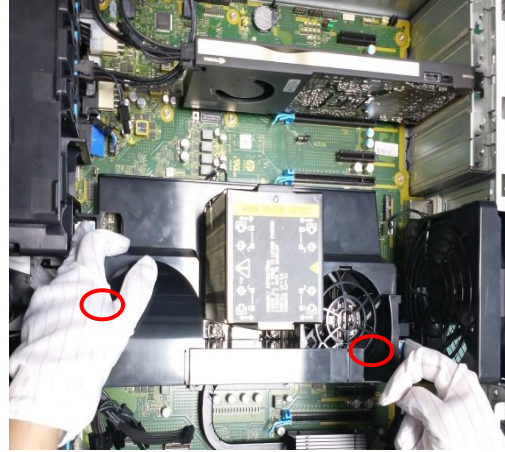


Figure7 Remove the cooler fan from duct.

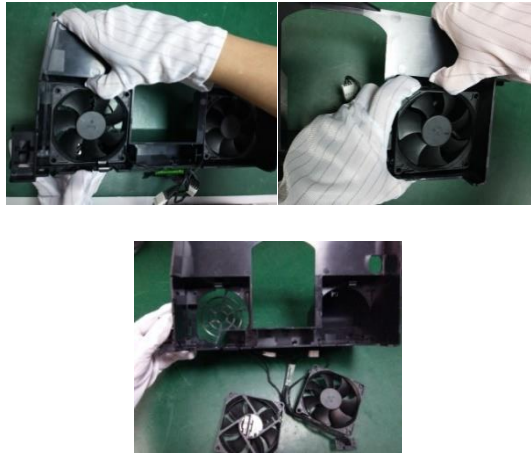


Figure8 Disconnect the graphic card cable and remove the graphic card from motherboard. See below is Graphic card PCB.

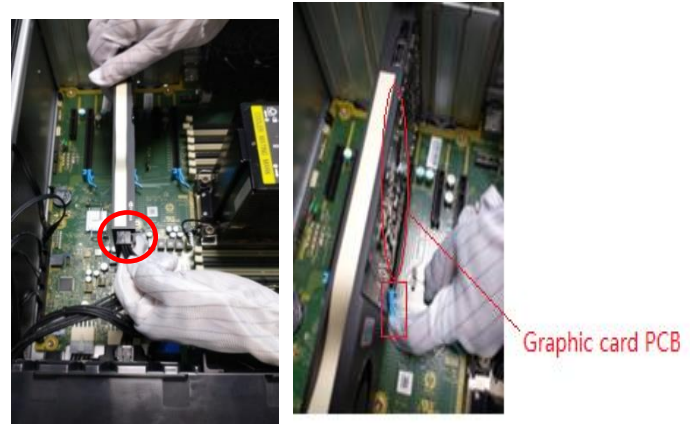
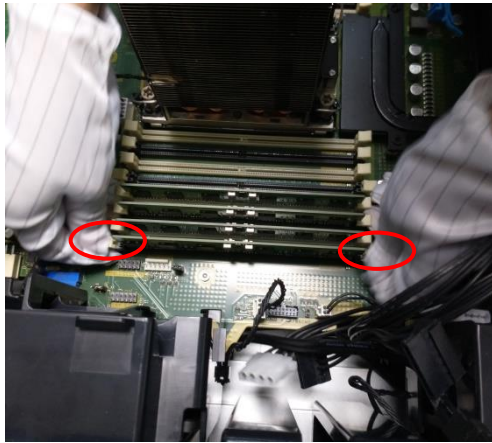


Figure9 Remove the 4 pcs memories from motherboard.



Below is 4pcs Memories PCB



Figure10 Disconnect the ODD SATA/ Power cable from ODD.



Figure11 Remove the ODD from chassis

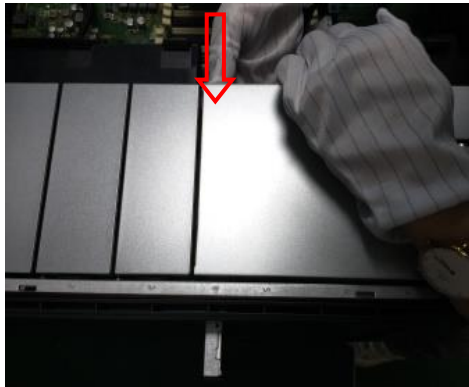


Figure12 Loosen the HDD bracket



Figure13 Remove the HDD bracket from the Chassis

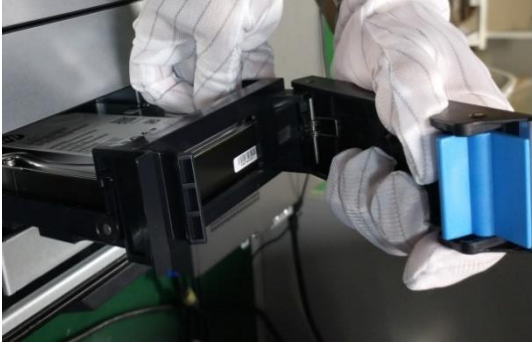


Figure14 Remove the HDD from HDD bracket by push out the HDD bracket.



Figure15 Disconnect the PCIe power cables from PCIe fan guide.

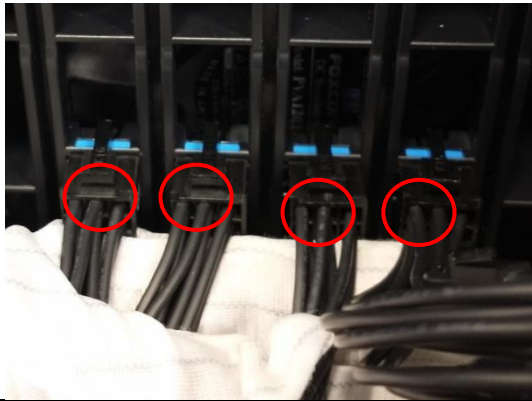


Figure16 Disconnect the front middle chassis fan cable

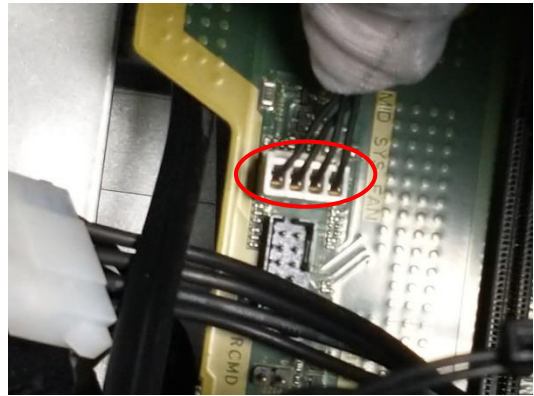


Figure17 Disconnect the front lower chassis fan cable



Figure18 Press the guide and remove the PCIe fan guide from chassis.

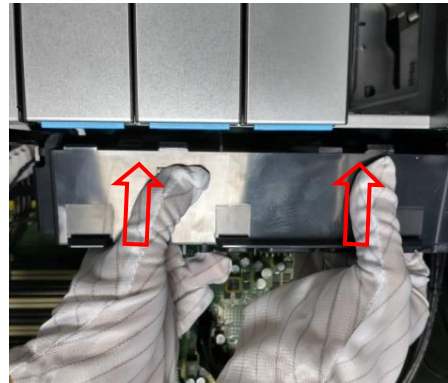


Figure19 Remove the front lower chassis fan from fan guide.

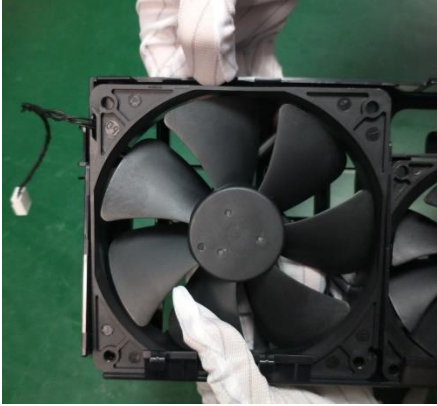


Figure20 Remove the front middle chassis fan from fan guide.



Figure21 All the parts of PCIe fan guide.



Figure22 Remove the rear system fan duct from hook.

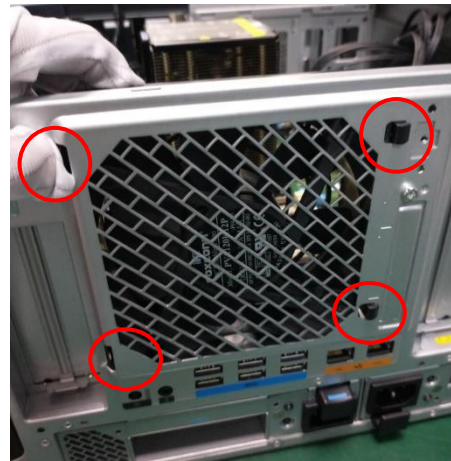


Figure23 Disconnect rear system fan cable from motherboard.

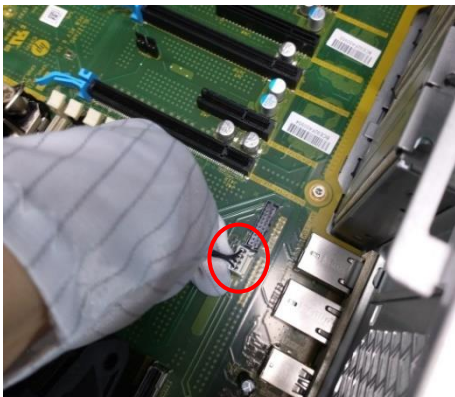
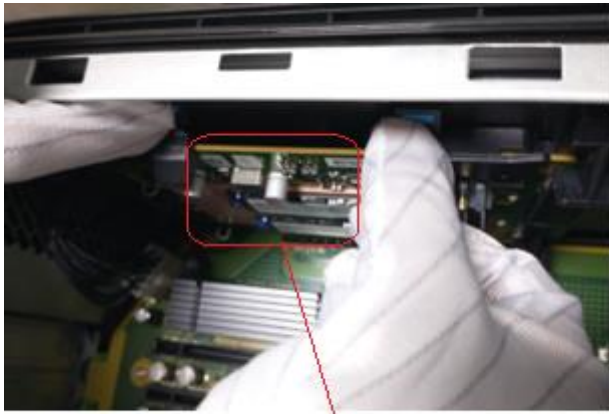


Figure24 Remove the fan guard from fan guard



Figure25 Press the clip and remove the transfer card



Transfer card PCB

Figure26 Loosen the 2pcs screws and remove the 2pcs SSD.

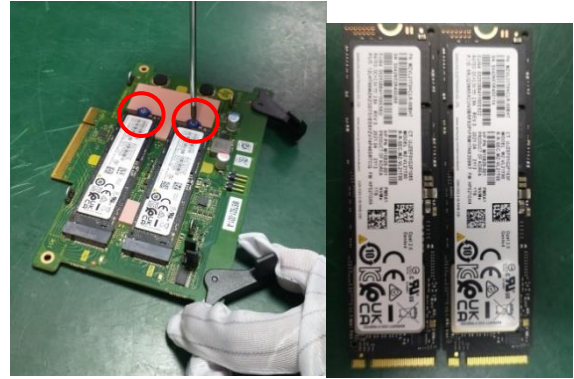


Figure27 Lift the latch and slide to the left (in the direction of rear IO).



Figure28 Remove the guide bracket.

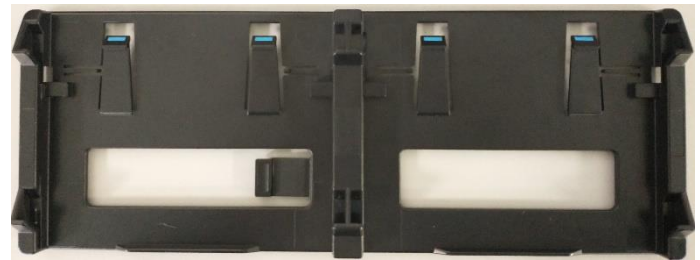


Figure29 Disconnect the front upper chassis fan cable.



Figure30 Press the guide and remove the front upper chassis fan and fan guard.

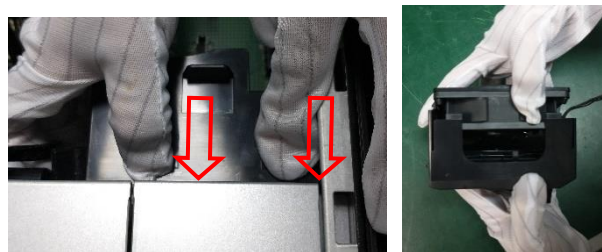


Figure31 Remove the fan guard from fan.



Figure32 Detailed parts on the assembly of chassis front upper chassis fan guide assembly.

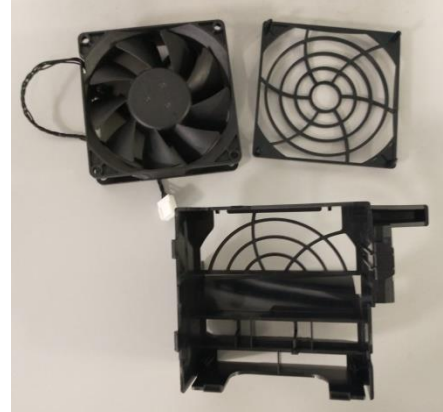


Figure33 Disconnect the switch card cable.



Figure34 Remove the switch card from chassis.



Figure35 Loosen the screws(x2) of speaker and release speaker.

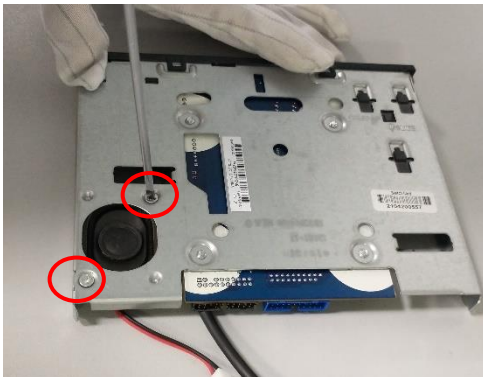


Figure36 Disconnect the speaker cable from switch card. See below is Switch card PCB.

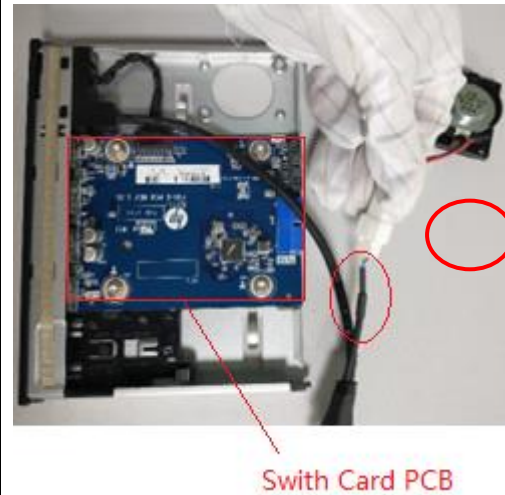


Figure37 Release the front panel mount cable from clip.



Figure38 Disconnect the front panel mount cable from switch card.



Figure39 Release the front panel mount cable by push out 2 pins fixed front side in switch card tray.

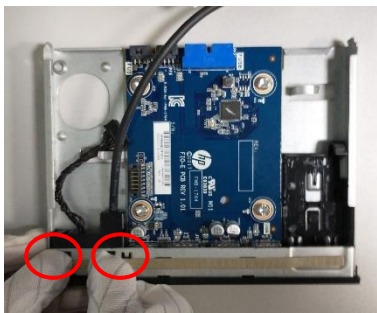


Figure40 Release the front panel mount cable by push out 2 pins fixed black side in switch card tray.

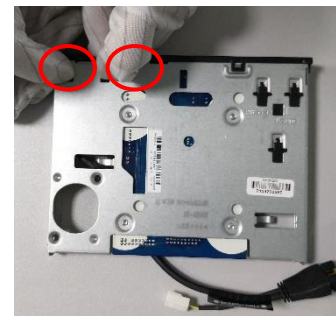


Figure41 Loose the 4pcs switch card PCA screws and remove the switch card PCA.

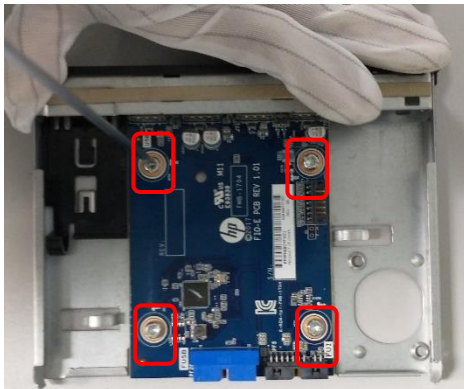


Figure42 Remove the SD card reader carrier.

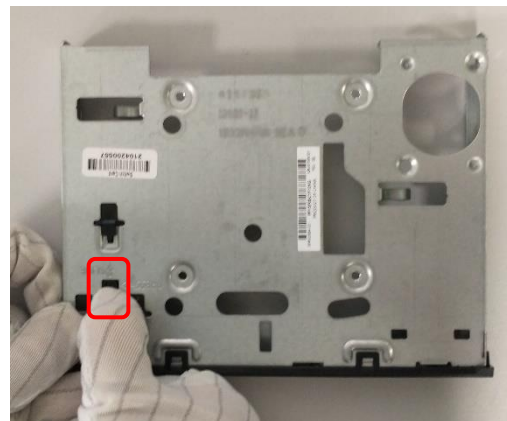


Figure43 Loosen the left and right side hooks of switch card panel.



Figure44 Loosen the 2pcs bottom side hooks of switch card panel.



Figure45 Detailed parts of switch card assembly.



Figure46 Remove the 3pcs HDD brackets from chassis.

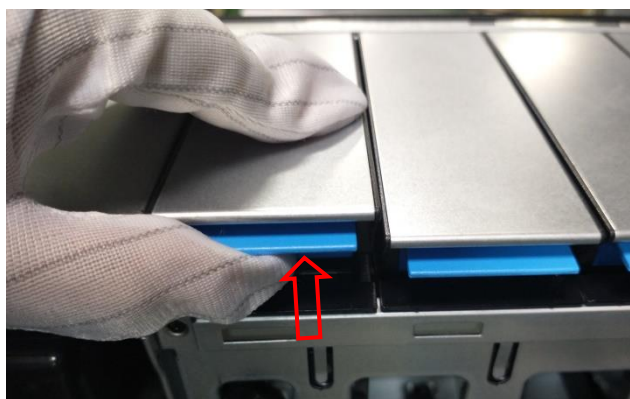


Figure47 Remove ODD housing from chassis.

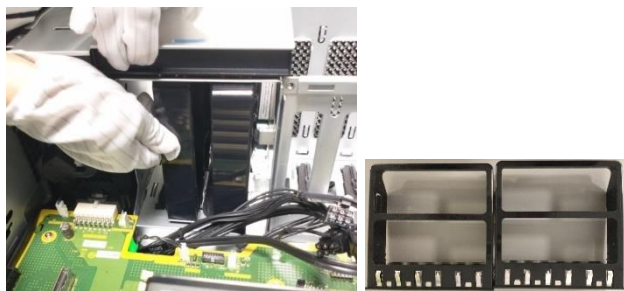


Figure48 Disconnect the CPU cooler cable from Motherboard.



Figure49 Remove the CPU cooler from MB

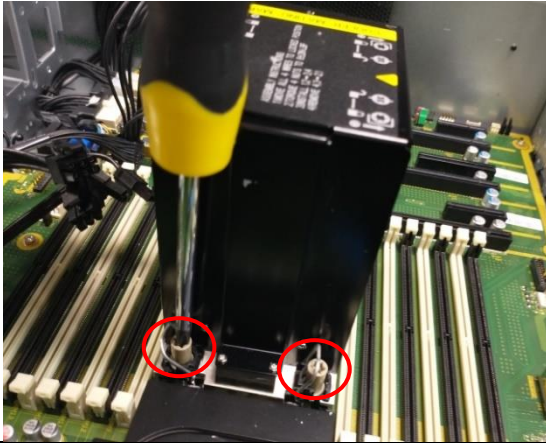


Figure50 Press the bottom and remove the CPU cooler from MB

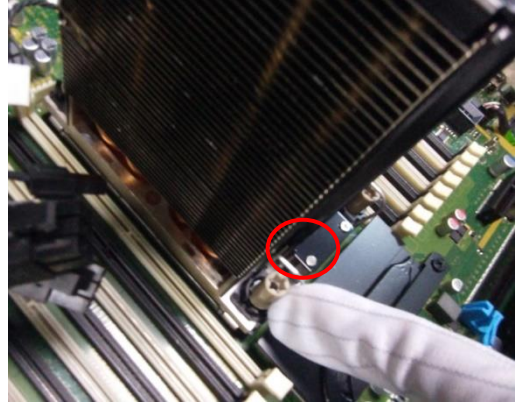


Figure51 Remove the CPU from the cooler

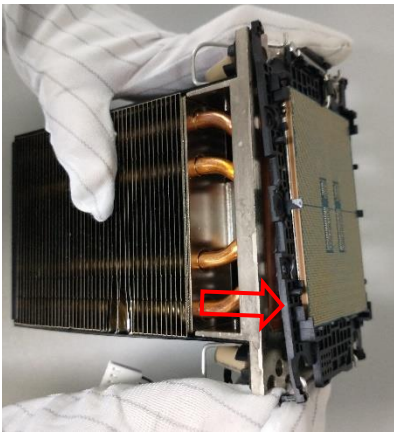


Figure52 Remove the CPU from the carrier.

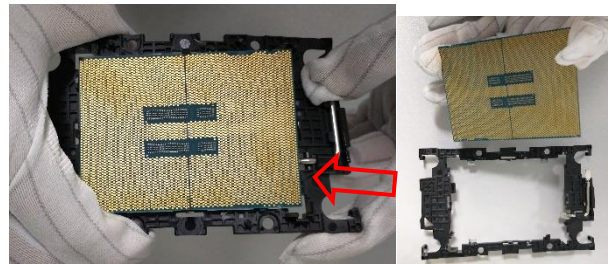


Figure53 Press the bottom and remove the 2pcs PSU.



Figure54 Cut off the cable ties on front upper in chassis

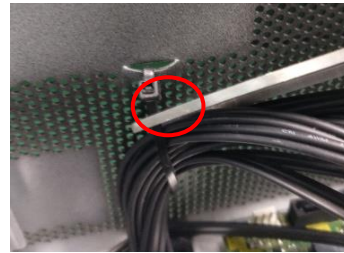


Figure55 Loosen the 2pcs screws and remove the heat sink

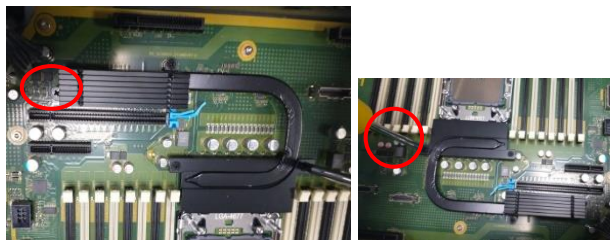


Figure56 Disconnect all other cables from MB

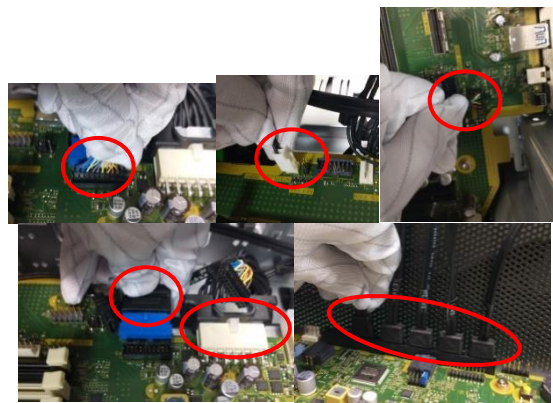


Figure57 Remove the MB from chassis

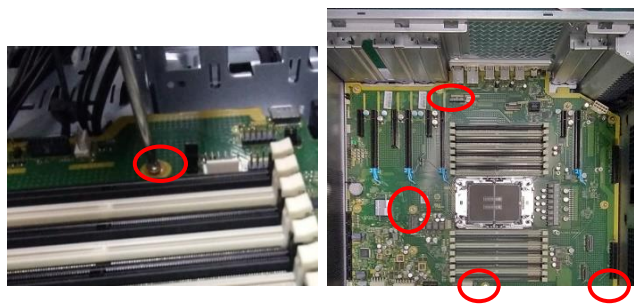


Figure58 Remove the battery from MB

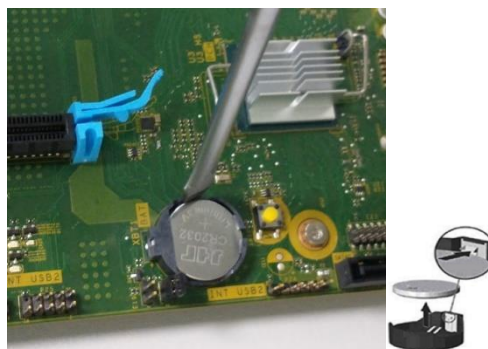


Figure59 Release 2pcs screws of right side panel.



Figure60 Cut off 5 pcs cable ties to fix power cable

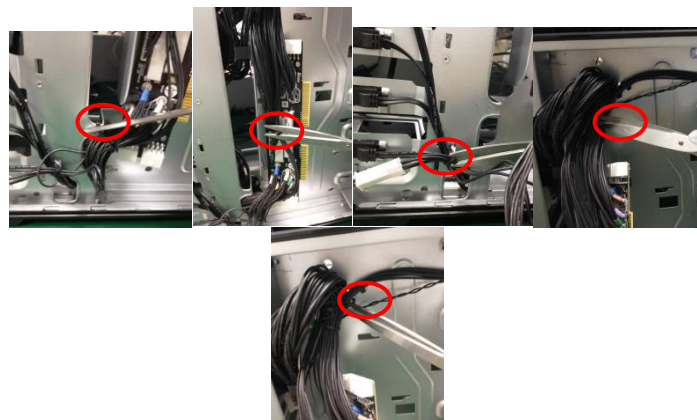
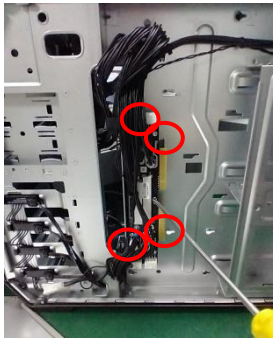


Figure61 Unlock 4pcs screws of PDB.



See below is PDB PCB.

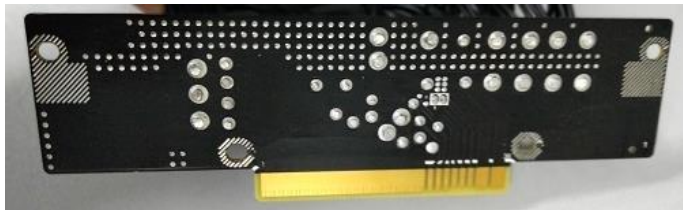


Figure62 Disconnect the H1 power cable and blind mating SATA power cable



Figure63 Release the blind mating SATA connector from chassis

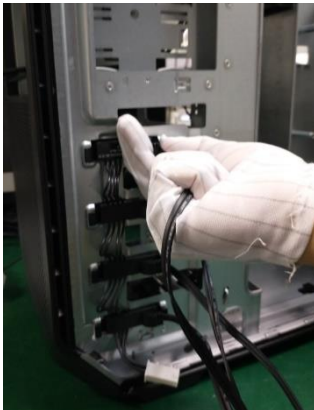


Figure64 Cut off cable tie and remove blind mating SATA cable

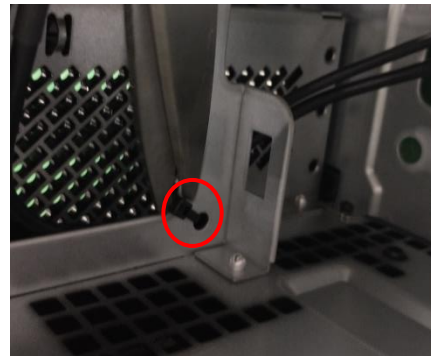


Figure65 Loosen the screw and remove interlock bracket



Figure66 Loosen the screw, cable and interlock bracket



Figure67 Push up 2pcs inside latches to release hood sensor bracket from chassis.

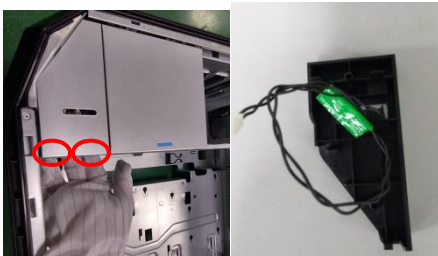


Figure68 Release 2pcs latches of top bezel and remove it.



Figure69 Release clasp of front bezel on bottom side of chassis and remove the bezel



Figure70 Remove the left side plastic parts of corner bracket pocket by release the clasp.



Figure71 Remove the right side plastic parts of front side handle pocket by release 2pcs latches.



Figure72 Unlock 4pcs screws front side handle.

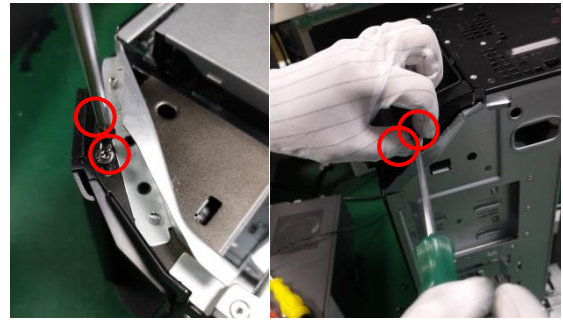


Figure73 Release 2pcs latches of front side handle pocket.



Figure74 Remove the handle pocket and details of front side handle pocket



Figure75 Unlock 2pcs screws front side handle.

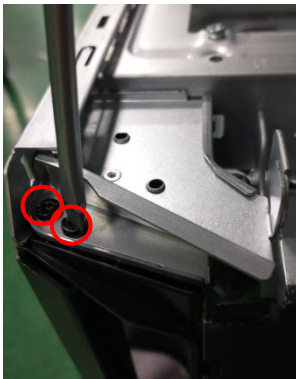


Figure76 Release 3pcs latches of rear handle pocket

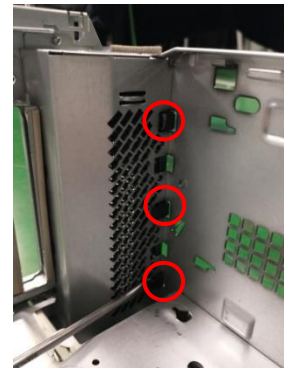


Figure77 Remove the handle pocket and details of front side handle pocket.

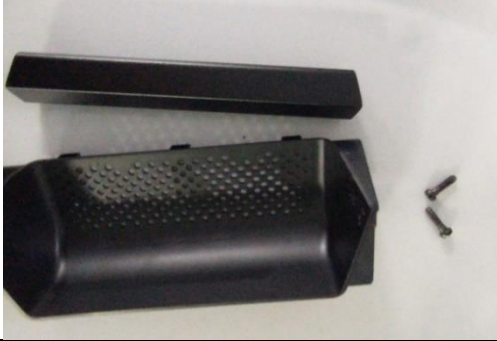


Figure78 Remove the PCIe slot covers (x7) from chassis.

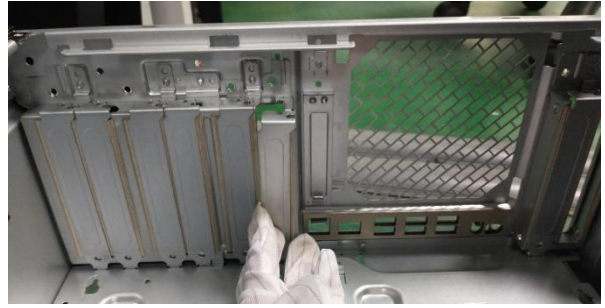


Figure79 Unlock bottom side screw of ODD bracket cover



Figure80 Remove the bottom side spring of ODD bracket cover



Figure81 Unlock top side screw of ODD bracket cover



Figure82 Remove the ODD bracket cover



Figure83 Unplugging.



Figure84 Unfasten seven screws.



Figure85 Push top cover on right hand side to make sure four snap in come off.

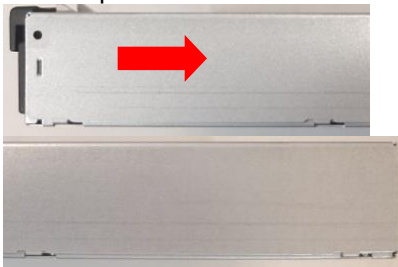


Figure86 Take top cover away.

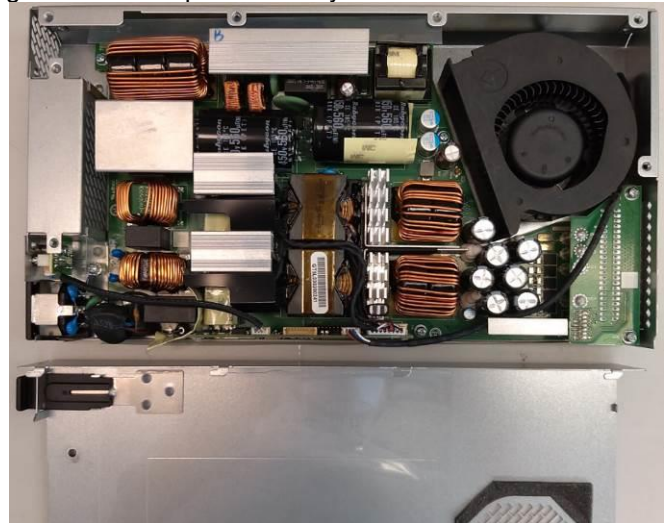


Figure87 Remove top Mylar, latch-cover and foam sheet from top cover.

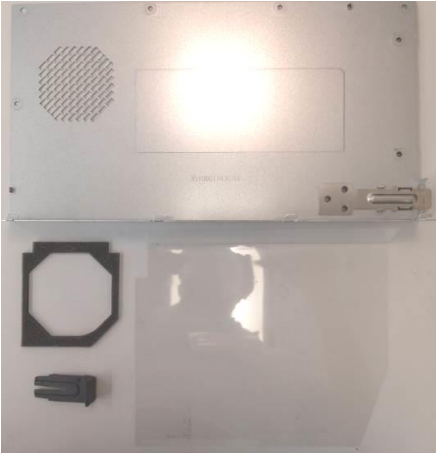


Figure88 Remove the small Mylar.

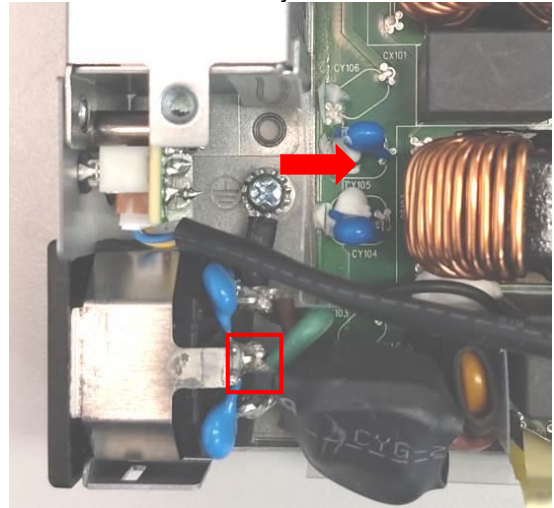


Figure89 Unfasten GND screw.

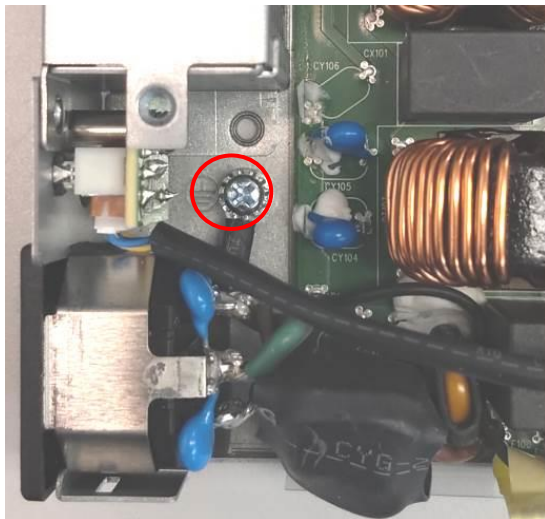


Figure90 Put AC socket cable outside to see PCBA screw.

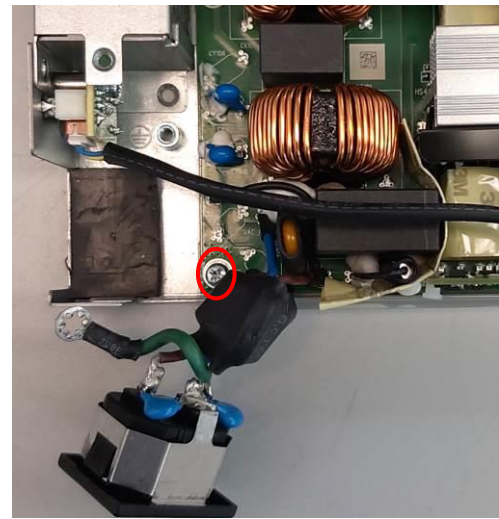


Figure91 Unfasten six screws

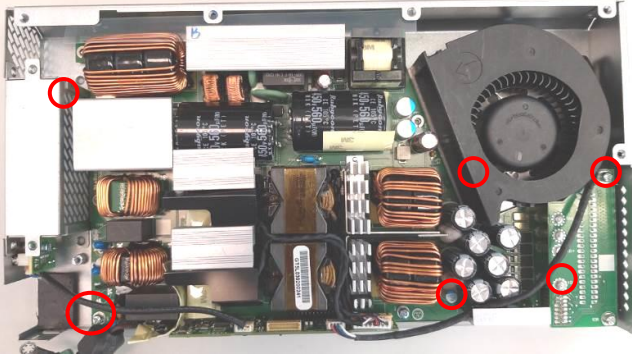


Figure92 Disconnect 3mm LED cable and fan cable from daughter board.

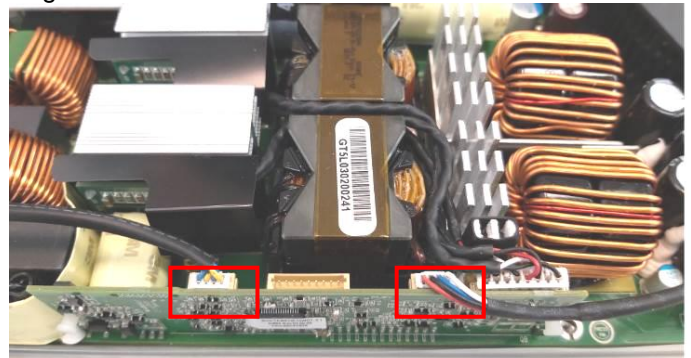


Figure93 Take out PCBA with AC socket cable from bottom chassis.



Figure94 Unfasten two screws.



Figure95 Take out fan from bottom chassis.

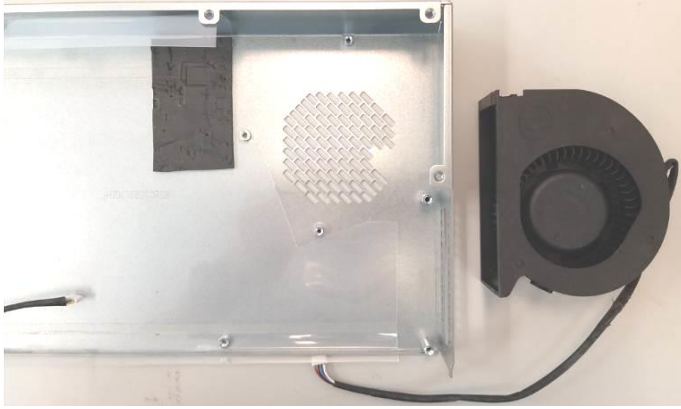


Figure96 Unfasten screw

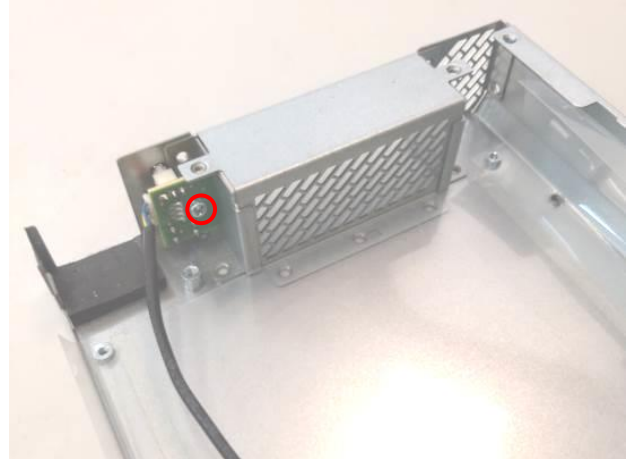


Figure97 Take out LED & S/W sub-assembly with cable from bottom chassis.

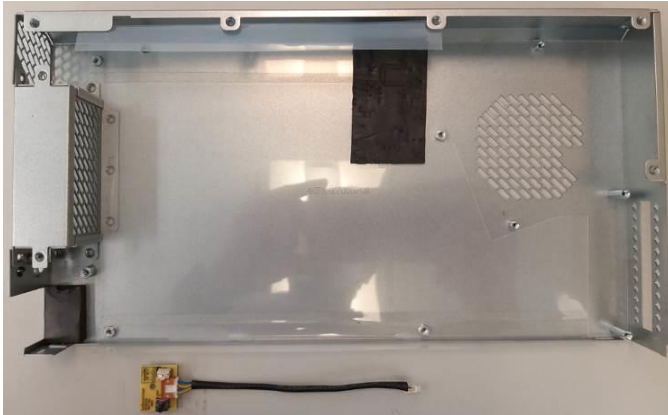


Figure98 Remove bottom Mylar and two pads from bottom chassis.

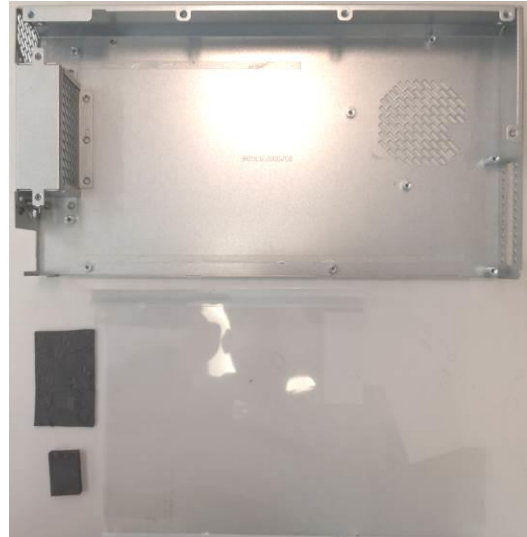


Figure99 Identity PCBA > 10 cm² for further treatment (main board: 324.6 cm²).

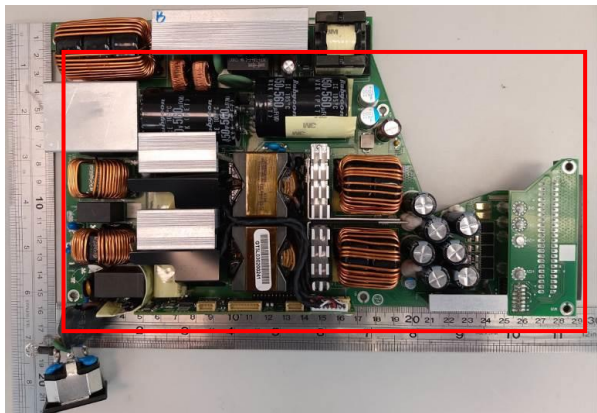


Figure100 Identity PCBA > 10 cm² for further treatment (daughter board: 32.5 cm²).

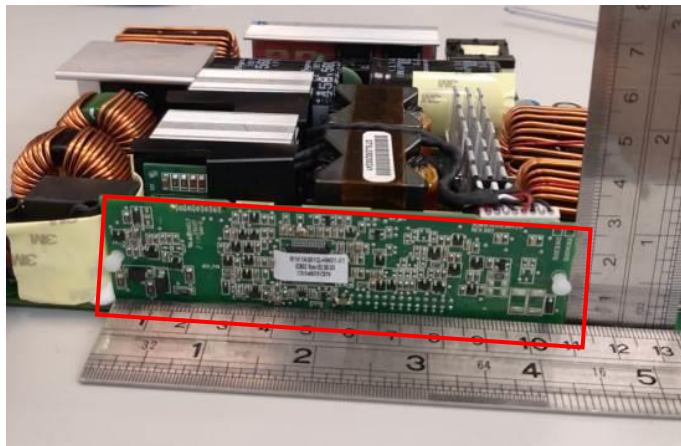


Figure101 Identity PCBA > 10 cm² for further treatment (daughter board: 24.0 cm²).

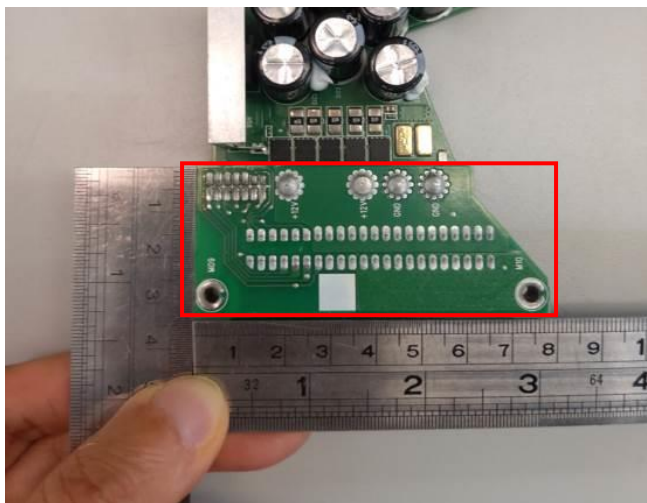


Figure102 Identity electrolyte capacitor > 2.5 cm for further treatment (Length: 4.5 cm).

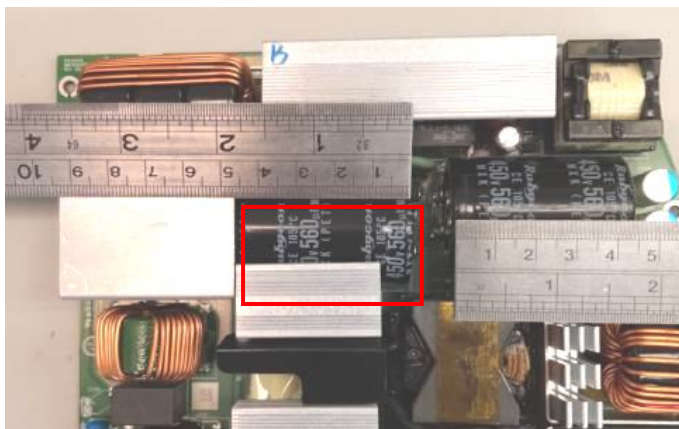


Figure103 Identity electrolyte capacitor > 2.5 cm for further treatment (Length: 4.5 cm).

