

1. Disassembly Procedures:

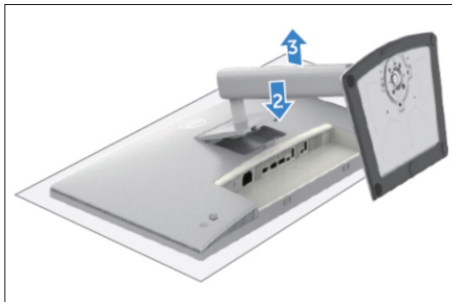
S1 Turn off power..



S2 Unplug external cables(power cable and video cable) from the monitor.

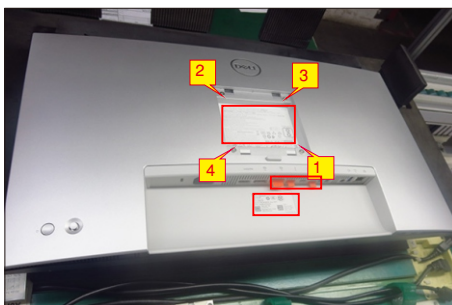


S3 Remove stand from the product.(Press the stand release button, lift the stand up and away from the monitor)



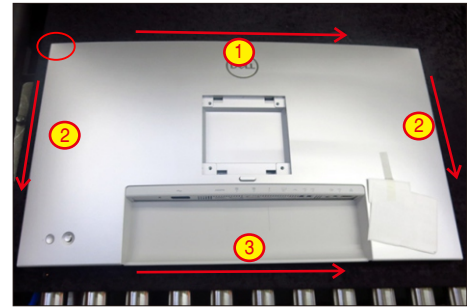
S4 Use a Philips-head screwdriver to remove 4pcs screws for unlocking mechanisms. Remove 3pcs DP caps.

(No.1~4 screw size=M4x11; Torque=11±1kgfxcM)



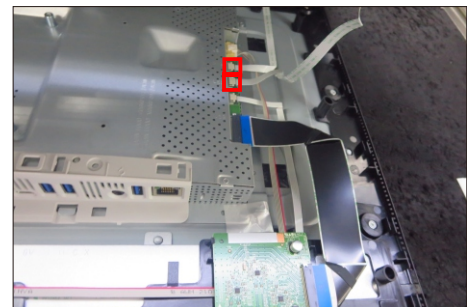
Wedge your fingers between rear cover and the middle bezel on the corners of the top side of the monitor to release the rear cover, then use one hand to press the middle bezel, the other hand to pull up carefully the rear cover in order of arrow preference for unlocking mechanisms of rear cover.

S5



Lift the rear cover up carefully. Disconnect the joystick key cable and sensor cable from the connectors of the interface board, and then remove the rear cover.

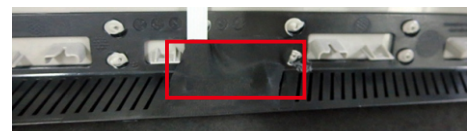
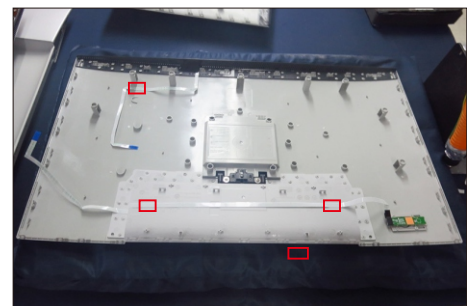
S6

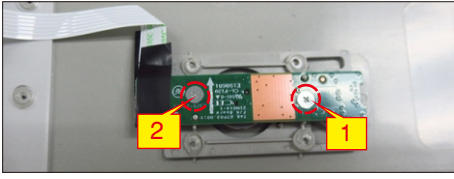


Tear off all tape to release the cables and release sensor board from the hook of the rear cover. Use a Philips-head screwdriver to remove 2pcs screw for unlocking the key board.

S7

(No.1~2 screw size=M2x2.4, Torque=0.8~1kgfxcM)

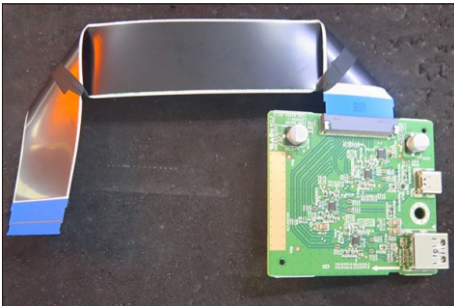
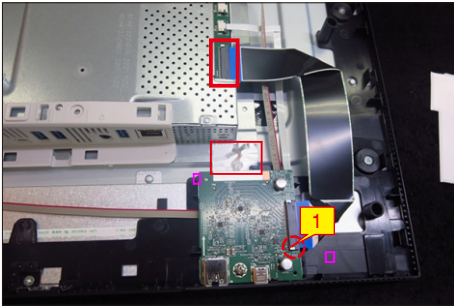




S8

Use a Philips-head screwdriver to release one screw for unlocking the USB board, then release the USB board from the hooks of the middle bezel and then remove the USB board unit.

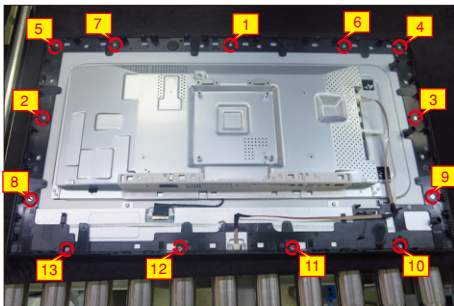
(No.1 screw size=M3x6, Torque=4±1kgfxcM)



S9

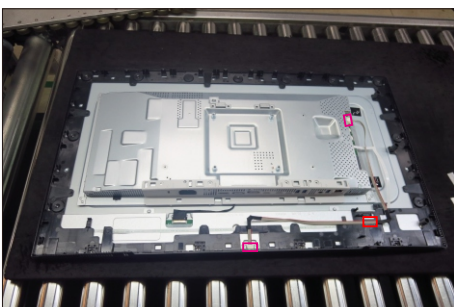
Use a Philips-head screwdriver to remove 13pcs screws for unlocking the middle bezel with the panel.

(No.1~13 screw size=M3x5, Torque=5±0.5kgfxcM)



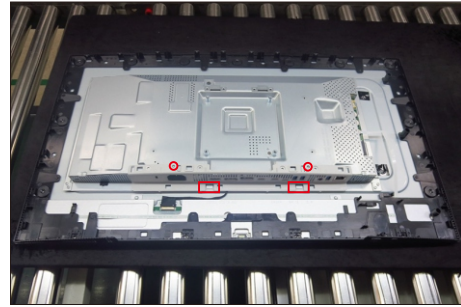
S10

Disconnect the panel lamp and LED cable from the connectors, then release the panel lamp cable from the hook of the middle bezel.



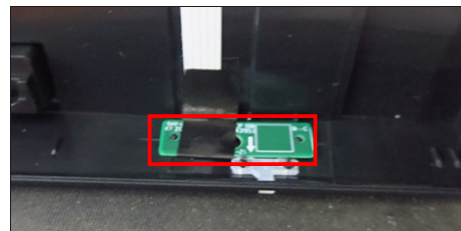
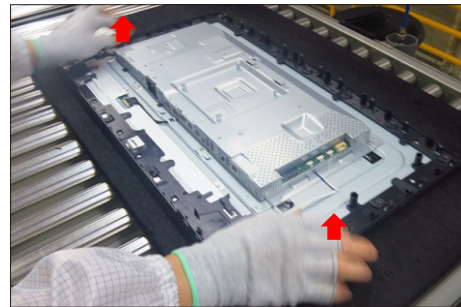
S11

Take 1pcs IO cover to locate the hooks of the bracket chassis module as the picture below shown.



S12

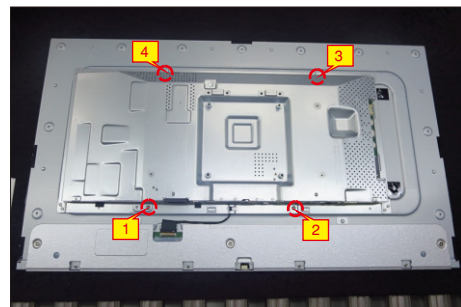
Lift up and take away the middle bezel, and put it on a cushion foam, and then tear off the mylar tape and adhesive tape on cable for releasing the LED board from the hook of the middle bezel.



S13

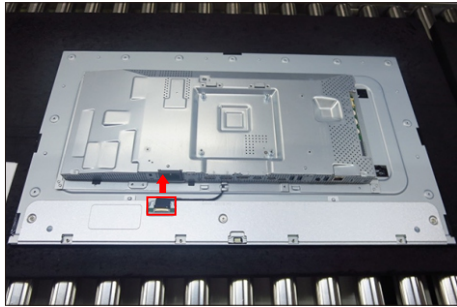
Use a Philips-head screwdriver to remove 4pcs screws for unlocking the bracket chassis with the panel.

(No.1~4 Screw size= M3x5, Torque=5±0.5kgfxcM)



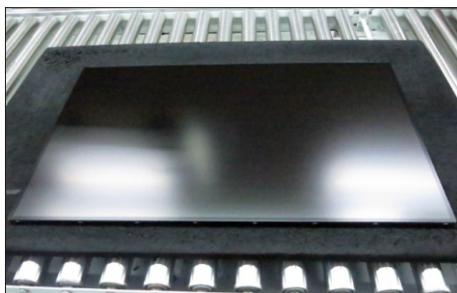
S14

Move up the bracket, then push the earing-lock and disconnect the EDP cable away from the connectors of the panel module.



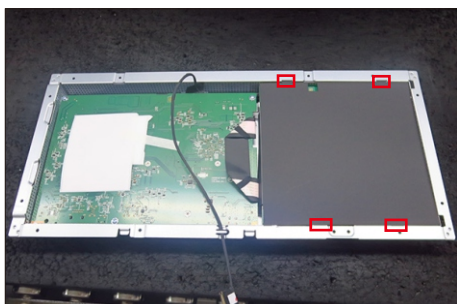
S15

Take away the bracket chassis module and then put the bracket chassis module on a protective cushion.



S16

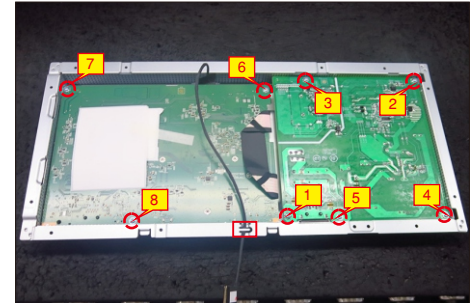
Remove the Mylar tape from the hooks of the bracket.



S17

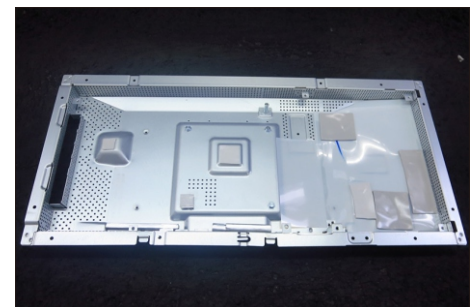
Use a Philips-head screwdriver to remove 8pcs screws for interface board and power board, then release the EDP cable from the hook of the bracket.

(No.1 screw size=M4x8, Torque=6±1kgfxcM;
No.2~8 screw size=M3x6, Torque=6±1kgfxcM)



S18

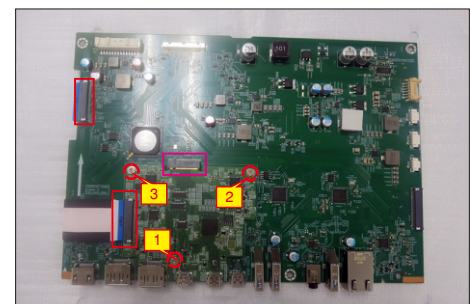
Remove the power board and interface board with TBT Board from the bracket chassis carefully, and then disconnect all of the cables.



S19

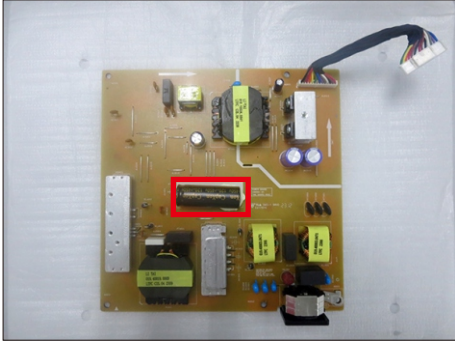
Use a Philips-head screwdriver to remove 4pcs screws for unlocking TBT board, then unplug the TBT board away from the interface board.

(No.1~3 screw size=M2.5x2.8, Torque=1±0.2kgfxcM)

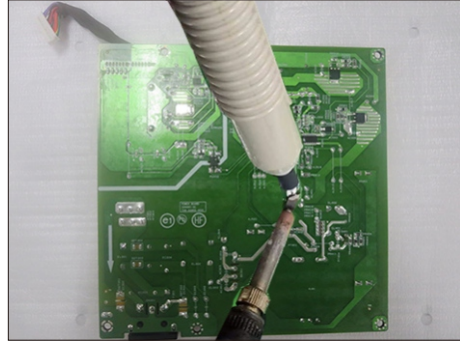


S20

Remove electrolyte capacitors (red mark) from printed circuit boards.

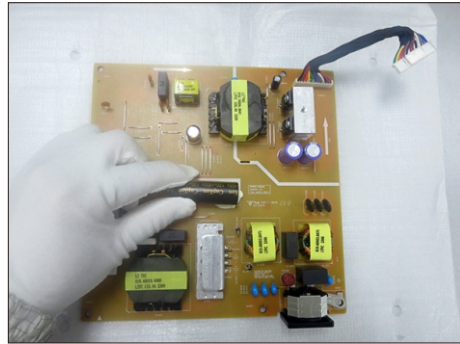
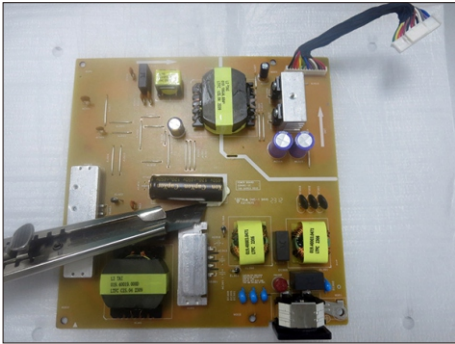


S20-4 Take out bulk cap. pin solder with soldering iron and absorber.

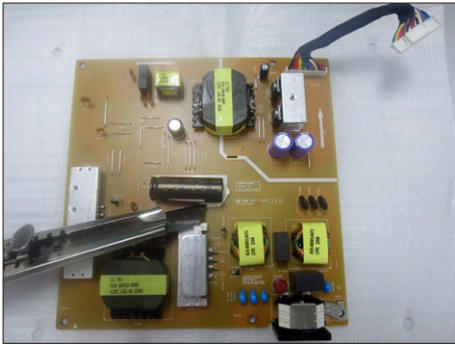


S20-1 Cut the glue between bulk cap. and PCB with a knife.

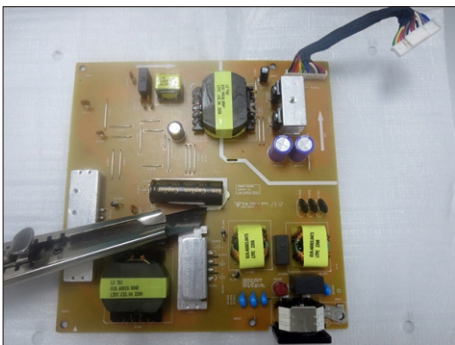
S20-5 Lift the bulk cap. up and away from the PCB.



S20-2 Ensure cutting path within the glue, don't touch bulk cap. or PCB.



S20-3 Cut into the bottom of bulk cap. and pullit up carefully.



2. Product material information

The following substances, preparations, or components should be disposed of or recovered separately from other WEEE in compliance with Article 4 of EU Council Directive 75/442/EEC.

Capacitors / condensers (containing PCB/PCT)	No used
Mercury containing components	No used
Batteries	No used
Printed circuit boards (with a surface greater than 10 square cm)	Product has printed circuit boards (with a surface greater than 10 square cm)
Component contain toner, ink and liquids	No used
Plastic containing BFR	No used
Component and waste contain asbestos	No used
CRT	No used
Component contain CFC, HCFC, HFC and HC	No used
Gas discharge lamps	No used
LCD display > 100 cm ²	Product has an LCD greater than 100 cm ²
External electric cable	Product has external cables
Component contain refractory ceramic fibers	No used
Component contain radio-active substances	No used
Electrolyte capacitors (height > 25mm, diameter > 25mm)	Product has electrolyte capacitors (height > 25mm, diameter > 25mm)

3. Tools Required

List the type and size of the tools that would typically can be used to disassemble the product to a point where components and materials requiring selective treatment can be removed.

Tool Description:

- Screwdriver (Phillip head) #1
- Screwdriver (Phillip head) #2
- Penknife
- Soldering iron and absorber