

# PRECISION WORKSTATIONS

The #1 workstation  
brand in the world<sup>1</sup>



## TABLE OF CONTENTS

|                              |      |
|------------------------------|------|
| 25 Years of Precision        | 2    |
| Why Choose                   |      |
| Precision Workstations       | 3–5  |
| Dell Optimizer for Precision | 6    |
| Precision User Persona       |      |
| –Meet the Specialist         | 7    |
| Industry Use Cases           | 8    |
| Precision Mobile             |      |
| Workstations, Desktops,      |      |
| Towers, and Racks            | 9–15 |
| Sustainability               | 16   |
| Important Information        | 17   |



# PRECISION



Brilliance deserves Precision

For 25 years, Dell Precision has delivered versatile designs, top performance, and reliability to enable you to conquer your most demanding applications. From award-winning filmmakers and animators to state-of-the-art architects and engineers, to data scientists and VR developers, our expansive portfolio enables you to customize a workstation for your creative expertise. Learn more at [Dell.com/Precision](https://Dell.com/Precision).

**Need help finding the right workstation for you?**

Visit our [Workstation Advisor](#)—an interactive tool that helps identify your unique system configuration.





# PRECISION

## Why choose Dell Precision Workstations?

Every Dell Precision is engineered with features you need to bring your biggest ideas to life.



### Innovative design

Experience unrestrained innovation with the new thinner, lighter, premium-designed mobile workstations. These devices feature InfinityEdge, UHD+, HDR, and Touch display options, plus advanced thermal technologies that allow you to keep your system running at high speeds for longer. Unique designs in multiple form factors deliver ultimate scalability, including rack workstations, small form factors, and mini-tower workstations. Additionally, select towers have FlexBays for easy part replacements, as well as multi-channel advanced cooling for outstanding acoustics and thermal performance.

### Key design technologies

### Intelligent performance

Your extraordinary ideas deserve the exceptional power of the number one workstations in the world<sup>1</sup>. Dell Precision delivers maximum performance with professional processors and graphics, as well as massive memory and expansive storage options. Plus, Dell Optimizer for Precision is the only AI-based performance software in the industry that automatically tunes your workstation using machine learning—further delivering optimal performance.

### Key performance technologies





# PRECISION

## Why choose Dell Precision Workstations?

Every Dell Precision is engineered with features you need to bring your biggest ideas to life.

### Outstanding reliability

Dell invests thousands of hours with Independent Software Vendors (ISV) to rigorously test our Dell Precision workstations so we can deliver a fully optimized workstation to you. These software partners team with us and our customers to ensure the best user experience possible. Learn more about ISV Certifications at [PrecisionWorkstations.com](https://www.dell.com/precisionworkstations).

Dell exclusive, BIOS-based, Reliable Memory Technology Pro provides Error Corrective Code (ECC) memory, which automatically fixes single-bit memory errors. RMT Pro identifies and maps out bad memory sectors on the

DIMM so they aren't accessed again following a reboot, which helps avoid memory errors and blue screens. The software also warns the user when DIMMs are at a critical point to failure and should be replaced.

Our mobile systems are MIL-SPEC tested to ensure they are robust and can handle typical wear and tear that comes with traveling. Also, Dell ProSupport Plus is the most complete service and support offering in the industry, so you can have both quality products and the ultimate services to go along with them.

### Key technologies





# PRECISION

## Security

We know security is important to you, and Dell Precision workstations feature key security features across the portfolio, whether in the office, on the road, or somewhere in between.

**Key technologies  
on select systems**



## Driving Emerging Technologies

Dell Precision workstations are the foundation of virtual and augmented reality content creation and advanced commercial visualization. Our broad Ready for VR portfolio combined with the Dell Technology Partner Program are bringing futuristic efficiency and innovation to every office.

Dell Precision workstations also deliver the power to deploy and manage cognitive technology platforms, including Machine Learning, Deep Learning, and Artificial Intelligence, to help businesses solve complex problems and gain actionable insights from their data.





# PRECISION

## Dell Optimizer for Precision



### ExpressResponse

Uses AI to optimize application performance.



### ExpressConnect

Finds the best two WiFi signals and the connection with the most available bandwidth.



### ExpressSign-in

Utilizes presence-sensing technology to recognize when you're near and automatically wakes your system.



### Intelligent audio

Automatically tunes your system by adjusting background noise and managing speech volume.



### ExpressCharge

Provides 35% charge in about 15 minutes or 80% in one hour.



### ExpressDischarge

Intelligent battery run-time extensions.



### Exclusive for Precision workstations

#### Now available Optimization for storage-heavy apps

Provides optimized performance for applications that handle large file types.



#### Now available Reporting and analytics

Helps with identifying performance bottlenecks and IT planning.



# USER PERSONAS

## Meet the Specialist

At Dell Technologies, we have redefined our commercial end-user personas to address the unique work styles and pain points of the hybrid workforce. We've eliminated the guesswork from choosing the right tools for the job with thoughtfully curated solutions tailored to each end user's needs.

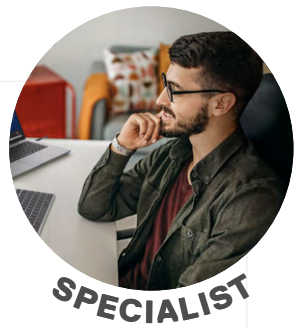
Precision workstations are designed for Specialists—those in specialized and complex fields, performing analyses and detailed work. They need top performance and security options for desk productivity with the ability to work anywhere.

### Specialists: motivation

Produce expert level deliverables  
...  
Get a sense of satisfaction and pride in seeing their projects drive outcomes  
...  
Are excited by the challenge to solve complex problems and deliver unique solutions

### Specialists: challenges

Face challenges when setting up devices across different workspaces  
...  
Need to collaborate and be connected regardless of where they are  
...  
Work best in a clean and efficient workspace  
...  
Are regularly managing connectivity and power



2x

more performance applications used (compared to other personas)

15%  
of the workforce

43%  
work from home



# PRECISION

## Performance vital for variety

From 3D animation to financial analytics, Dell Precision workstations are purpose-built to power industry leaders across a wide variety of professional landscapes. Explore our industries below to find out how you can leverage Precision workstations to support your workflow.



### Media and entertainment

Become an expert at your digital content workflow with a Precision partnered with Adobe, Avid, Autodesk, and many other media ISVs.

[Learn more →](#)



### Manufacturing and engineering

Quickly bring products to market, improve design, and reduce prototypes with Autodesk, Dassault Systems, ANSYS, and other software powered by Precision.

[Learn more →](#)



### Healthcare and life sciences

Maneuver telemedicine, EMR systems, and PACS images through partnerships with GE Healthcare, Barco, Cerner, and Epic.

[Learn more →](#)



### Oil and gas

Complex workflow models and big data analytics are no match for workstation-class power combined with Halliburton, Schlumberger, and IHS Markit support.

[Learn more →](#)



### Government and education

Take designs, data analytics, and creative masterpieces to the next level with Dell Precision.

[Learn more →](#)



### Economics and financial services

Dell Precision workstations power trading floors, financial analysis, and banking through partnerships with financial institutions and ISVs.

[Learn more →](#)

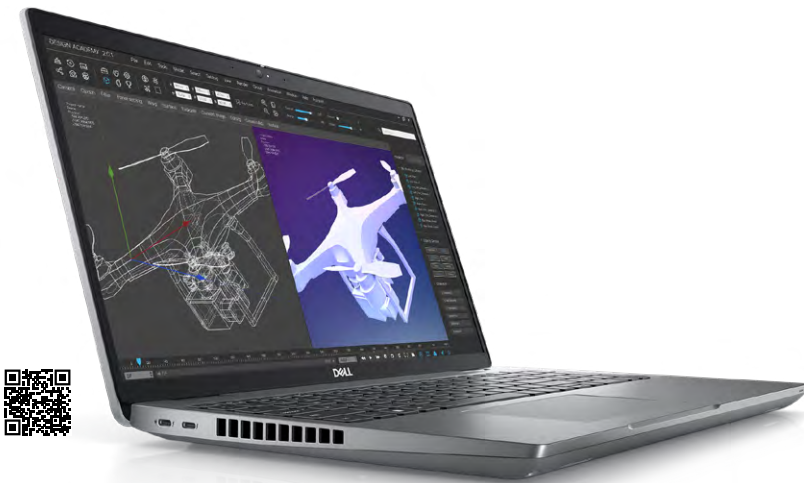


## PRECISION 3000 SERIES MOBILE WORKSTATIONS

Level up your technology to match your skills with affordable workstation performance and reliability in a thin and light package. Essential for design, creative, web design, financial analysis, and Microsoft power-users.

### Dell Precision 3570

The 3570 is a thin and light, cost-effective workstation. This entry-level workstation is designed with up to 28% recycled or renewable materials in the LCD coverlid, bringing sustainability to the forefront while giving 2D CAD and power users a sleek-looking design.



### Dell Precision 3571

Our best price for performance workstation<sup>5</sup>. Like the 3570, it provides sustainability features, along with a sleek design. But, the performance of this system takes it a notch up, delivering essential performance to 3D CAD, as well as creative applications.

## DELL PRECISION MOBILE WORKSTATION FAMILY

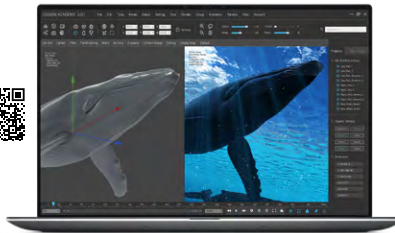
# PRECISION 5000 SERIES MOBILE WORKSTATIONS

Stay in your creative zone with enhanced performance workstations designed to impress with a combination of style and capability. Perfect for users on-the-go with a light but robust design, these devices are intended for design, creative, and other mainstream applications.



### Dell Precision 5470

The world's most powerful 14" mobile workstation is also our smallest and lightest workstation<sup>4</sup>. It packs a tremendous punch in a small form factor, featuring a 45W processor and professional graphics from Intel and NVIDIA.



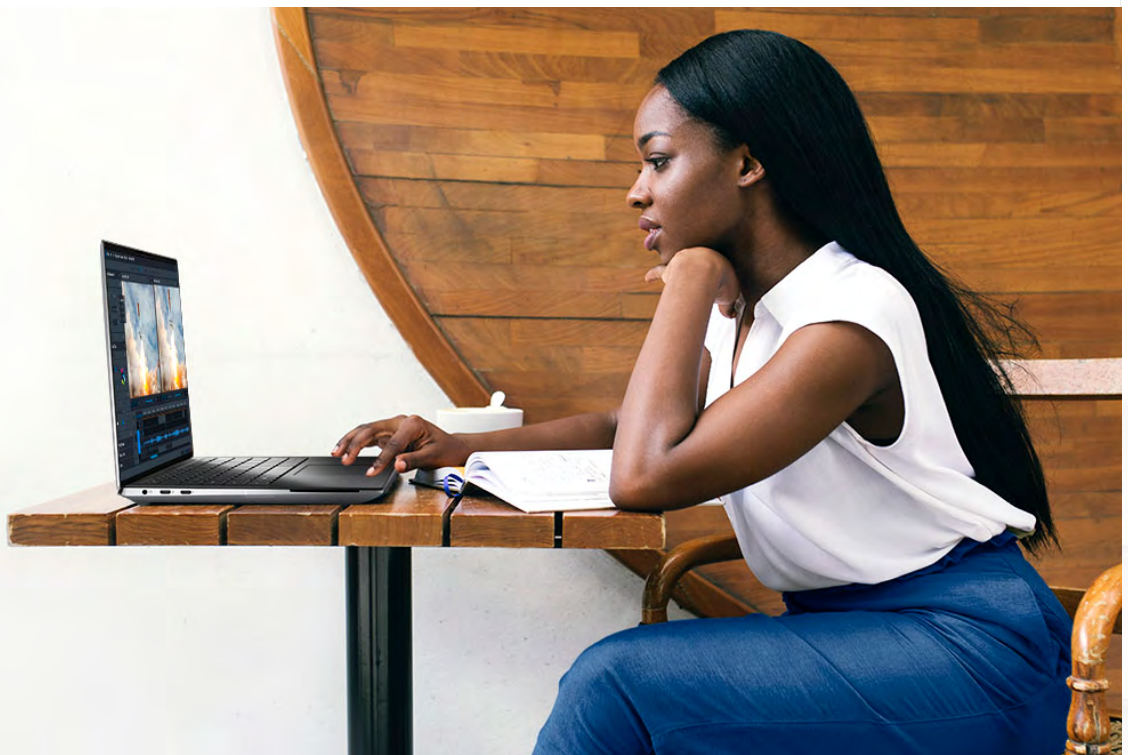
### Dell Precision 5570

A stylish, thin, and light 15" workstation that delivers outstanding performance in a small package. Great for creative and design personnel who need to take their work on the road.



### Dell Precision 5770

Dell's thinnest and smallest 17" workstation<sup>3</sup> is engineered to excel and designed to impress. The InfinityEdge HDR display provides for massive real estate that gives a truly immersive feel.





## PRECISION 7000 SERIES MOBILE WORKSTATIONS

Put power behind your purpose with ultra-scalable mobile performance and reliability to power massive data sets, design simulations and analysis, rendering, and even VR and AI initiatives. These devices are perfect for energy, healthcare, engineering, and creative applications.

### Dell Precision 7560

Our most powerful 15" mobile workstation<sup>3</sup> is designed to deliver desktop-like performance in an easy-to-carry workstation. This system is great for data and graphic-intensive workflows and is capable of pushing VR and AI applications.



### Dell Precision 7760

Our most powerful mobile workstation<sup>3</sup> is ready for VR and AI. If you're looking to maximize the performance of your applications while taking them on the road or to the home office, this is the right workstation for you. It features a large 17" display, which is great for applications with lots of detail.

## DELL PRECISION FIXED WORKSTATION FAMILY

# 3000 SERIES DESKTOPS, TOWER AND RACK

Take your ideas to new places with a workstation that matches your skills but doesn't break the bank. Available in compact, small form factor, and a tower design, they are great for space-constrained workspaces. These workstations are optimal for financial, design, creative applications, and many more.

### Dell Precision 3260 Compact

The 3260 Compact is an ultra-small form factor workstation designed for tight workspaces and edge computing. This small but powerful system is capable of pushing up to (7) 4K displays (also 8K support) and is VR Ready. Multiple mounting options plus dust and wire covers provide the flexibility to place this device almost anywhere.



### Dell Precision 3460 SFF

Incredible performance and reliability are packed into a small form factor workstation, making it great for space-constrained workspaces and the Edge. Several desk mounting options, as well as rack mounting, helps keep your workspace clutter-free.



## 3000 SERIES DESKTOPS, TOWER AND RACK

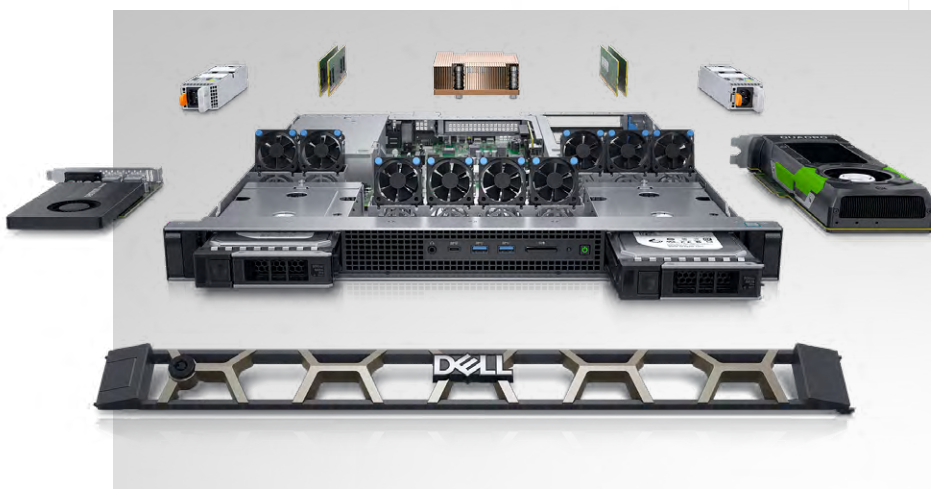


### Dell Precision 3660 Tower

Exceptional scalability in a Tower design, with performance capable of pushing VR and AI workloads. The 3660 Tower has an all-new chassis and offers Liquid Cooling to run heavy workloads with minimal noise. The 3660 also introduces front-accessible bays provide convenient and secure removable storage options.

### Dell Precision 3930 Rack

A powerful 1U rack workstation that features secure remote 1:1 user access, impressive affordability, and workstation-class performance. A short-depth and narrow design deliver better rack density and a smaller footprint that is ideal for space-limited workspaces and will seamlessly integrate into your data center while allowing for direct assimilation within OEM solutions.



## DELL PRECISION FIXED WORKSTATION FAMILY

# 5000 SERIES TOWER

Keep pace with your stream of thought with a mid-stream tower designed to deliver amazing performance for power-hungry applications. VR, AI-ready, and Data Science versions available.

### Dell Precision 5820 Tower

Experience big power in an innovative tower design with powerful processors. The 5820 Tower is ideal for professional users working with graphics and data-intensive design applications that require higher core counts and high-end graphics support in a single socket architecture. The tool-less chassis with FlexBay design supports a range of modules including scalable storage. Plus, stay cool under pressure with the revolutionary multichannel thermal design.





# 7000 SERIES TOWER AND RACK

Maximize your productivity with our most scalable workstations available. Featuring mid-size and full tower designs, as well as a 2U rack workstation, these devices are great for almost any data or graphic-intensive application.



## Dell Precision 7820 Tower

Get amazing performance in a more compact design with full tower scalability. The 7820 Tower is ideal for engineers, designers, analysts, and data scientists whose application mix includes multi-threaded, computer-intensive analysis, simulation, and rendering applications requiring high CPU core counts. Choose from a range of Ready for VR professional graphics with support for up to dual 300W graphics power. The innovative tool-less chassis design provides for easy access FlexBays with exceptional storage expandability. Experience longer-lasting, high-end performance with advanced cooling and acoustics through the revolutionary multichannel thermal design.



## Dell Precision 7920 Tower

Our most powerful and scalable tower workstation<sup>3</sup>. The 7920 Tower is great for customers who are running complex application environments including interactive design, analysis, data science, and exploration of very large data sets, as well as emerging applications/workloads like artificial intelligence and xReality. A versatile split chassis design features tool-less front access FlexBays and delivers maximum storage expandability. Discover revolutionary multichannel thermal cooling which allows your system to run at top speeds without overheating and provides for outstanding acoustics.



## Dell Precision 7920 Rack

Experience the highest level of secure remote access and ultimate workstation performance in a 2U rack industrial design. Plus, the Integrated Dell Remote Access Controller (iDRAC) allows you to deploy, update, monitor, and maintain remote workstations with ease. Collaborate across your organization, while keeping your IP in the data center.

# PRECISION

## Sustainability on Dell Precision Workstations

Leading the industry in sustainable practices in our products, packaging, and supply chain.



### Design

1st

workstations made with reclaimed carbon fiber and renewable bioplastic.<sup>2</sup>

### Sustainable materials

up to 46%

recycled plastic in fixed workstations. Up to 17% in mobile workstations.

### Packaging innovation

25%

ocean-bound plastic trays in Precision 5000 Series packaging.

## PRECISION HAS

19

EPEAT registered products.

→ [EPEAT](#)

16

TCO 16 certified configurations.

→ [TCO](#)

8.0

ENERGYSTAR® throughout the portfolio.

→ [ENERGYSTAR®](#)



1 Source: IDC Quarterly WW Workstation Industry Share Tracker, Q4 2021 (based on units)

2 Based on Dell analysis, Jan 2021. 21% bioplastics in LCD coverlid.

3 Based on Dell analysis, February 2022

4 Based on 14" workstation models in market, which offer only 15W processors, compared to the 45W on Precision 5470, February 2022.

**DELL**Technologies

March 2022