



Product End-of-Life Disassembly Instructions

Product Category: Mobile WorkStation

Marketing Name / Model
[List multiple models if applicable.]

Name / Model #1 HP ZBook Studio 16 inch G10 Mobile Workstation PC

Name / Model #2 HP ZBook Studio 16 inch G10

Name / Model #3

Name / Model #4

Purpose: The document is intended for use by end-of-life recyclers or treatment facilities. It provides the basic instructions for the disassembly of HP Inc. products to remove components and materials requiring selective treatment, as defined by EU directive 2012/19/EC, Waste Electrical and Electronic Equipment (WEEE).

NOTE: Recyclers should sort plastic materials into resin streams for recycling based on the ISO 11469 plastic marking code on the plastic part. For any questions on plastic marking or identification of location of parts or components requiring selective treatment, please contact [HP's Sustainability Contact](#).

1.0 Items Requiring Selective Treatment

1.1 Items listed below are classified as requiring selective treatment. An "X" in the list of components and parts indicates the product contains the component or part requiring selective treatment

Item Description	Components and parts requiring selective treatments	Quantity of items included in product
Printed Circuit Boards (PCB) or Printed Circuit Assemblies (PCA) with a surface greater than 10 sq cm	<input checked="" type="checkbox"/> Main board (MB) -PCB <input checked="" type="checkbox"/> Solid state drive (SSD) PCB <input type="checkbox"/> Wireless WAN module (WWAN) PCB <input checked="" type="checkbox"/> External power supply (EPS) PCB <input type="checkbox"/> External Keyboard (KB) <input type="checkbox"/> External Mouse <input checked="" type="checkbox"/> Others: Touch panel control board, Motion board, WLAN, Sensor board, trans board (5 pcs)	8
Batteries, excluding Li-Ion batteries. This includes standard alkaline, coin or button style batteries	RTC battery	1
Li-Ion batteries. Includes all Li-Ion batteries if more than one is provided with the product (such as a detachable notebook keyboard battery, etc.)	Battery(ies) are attached to the product by: <input checked="" type="checkbox"/> screws <input checked="" type="checkbox"/> snaps <input type="checkbox"/> adhesive <input type="checkbox"/> other. Explain _____	1
Mercury-containing components. For example, mercury in lamps, display backlights, scanner lamps, switches, batteries		0

Item Description	Components and parts requiring selective treatments	Quantity of items included in product
Liquid Crystal Displays (LCD) with a surface greater than 100 sq cm. Includes background illuminated displays with gas discharge lamps	[x] Panel LCD	1
Cathode Ray Tubes (CRT)	-	0
Capacitors / condensers (Containing PCB/PCT)		0
Electrolytic Capacitors / Condensers measuring greater than 2.5 cm in diameter or height	[] Power Supply capacitor(s) or condenser(s)	0
External electrical cables and cords	-[x] AC power cord [] Audio, video or data cables [] Other:	1
Gas Discharge Lamps		0
Plastics containing Brominated Flame Retardants (not including external electrical cables and cords, PCBs or PCAs already listed as a separate item above)		0
Components and parts containing toner and ink, including liquids, semi-liquids (gel/paste) and toner. Include the cartridges, print heads, tubes, vent chambers, and service stations.		0
Components and waste containing asbestos		0
Components, parts and materials containing refractory ceramic fibers		0
Components, parts and materials containing radioactive substances		0
Components containing chlorofluorocarbons (CFC), hydrochlorofluorocarbons (HCFC) or hydrofluorocarbons (HFC), hydrocarbons (HC);		0

2.0 Tools Required

List of the type and size of the tools that would typically be used to disassemble the product to a point where components and materials requiring selective treatment can be removed.

Tool Description	Tool Size (if applicable)
Electric screwdriver (Cross)	#1
Electric screwdriver (Trox)	T8

3.0 Product Disassembly Process

3.1 List the basic steps that should typically be followed to remove components and materials requiring selective treatment including the required steps to remove the external enclosure.

1. Follow steps described in Disassembly instruction (file attached)
2. If parts can be removed without using a tool, remove it first
3. Use correct screwdriver and torque value before unlock the screw

EL-MF877-00

Template Revision [D](#)

Page 2

[last updated 3-March-2022](#)

HP [Inc.](#) instructions for this template are available at [EL-MF877-01](#)

NOTE - For disassembly instructions of the external power supply (EPS), external keyboard (KB) external mouse and external cables and cords, refer to the links below:

- [Generic External Power Supply \(EPS\)](#)
- [Generic cables and cords](#)

3.2 Optional Graphic. If the disassembly process is complex, insert a graphic illustration below to identify the items contained in the product that require selective treatment (with descriptions and arrows identifying locations).



Standard Operation Procedure

Document No. : HP ZBook Studio 16 inch G9 disassembly SOP

Station: 5(1/1)

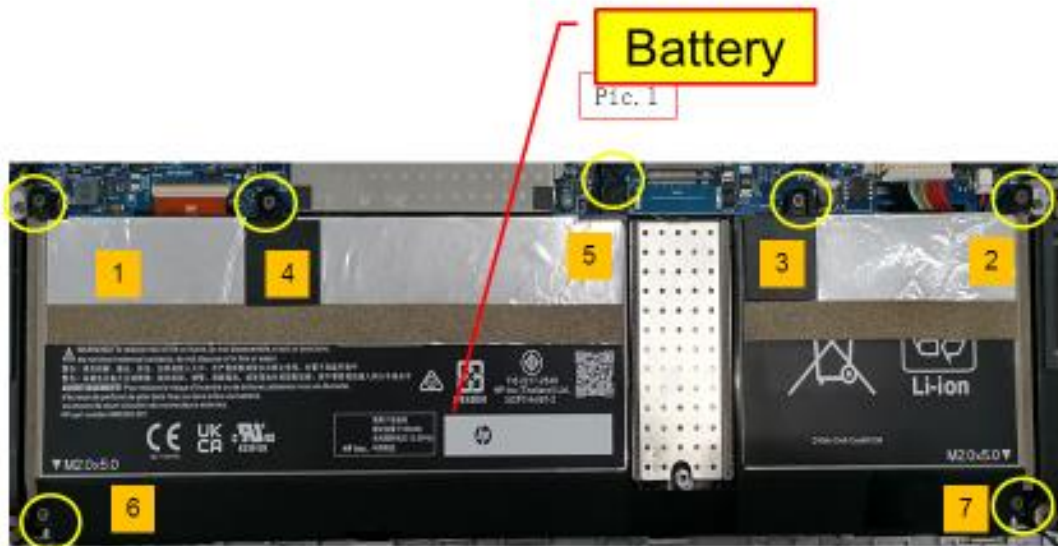
Operation Name : Disassembly Battery

Ver. : 0.10

Edit date : 2021/12/1

Step :

1. Loosen Battery screw *7PCS as Pic.1
 - ❖ Torque : 1.5 ± 0.2 Kgf · cm
 - ❖ Screw can not be slipped
2. Remove Battery.



Pic.1

Notice: Please inform production line leader or master if you found any abnormal..

Fixture list (Spec.)	Qty	Symbol							
Electric screwdriver#1	1								
		Safe	Quality	Order	Fixture	Bear	Look	Do	Static



Standard Operation Procedure

Document No. : HP ZBook Studio 16 inch G9 disassembly SOP

Station: 4(1/1)

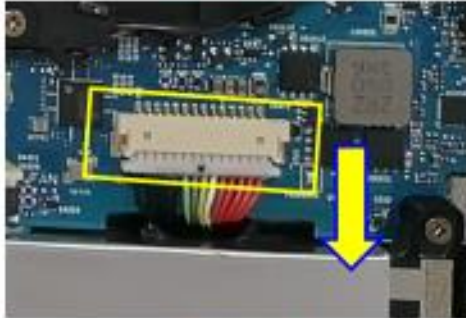
Operation Name : Disassembly SSD

Ver. :0.10 Edit date : 2021/12/15

Step :

1. Pullout battery cable from connector as Pic.1
2. Loosen SSD screw*1 PCS as Pic.2
 - ❖ Screw specification : M2.0*3.0
 - ❖ Torque : 1.5± 0.2 Kgf · cm
 - ❖ screw can not be slipped.
3. Remove SSD shilding can Top
4. Remove SSD

Pic.1



Pic.2



Pic.3



SSD

Notice: Please inform production line leader or master if you found any abnormal..

Fixture list (Spec.)	Qty	Symbol								
Electric screwdriver#1	1									
		<table border="1"> <tr> <td>Safe</td> <td>Quality</td> <td>Order</td> <td>Fixture</td> <td>Hear</td> <td>Look</td> <td>Do</td> <td>Static</td> </tr> </table>	Safe	Quality	Order	Fixture	Hear	Look	Do	Static
Safe	Quality	Order	Fixture	Hear	Look	Do	Static			



Standard Operation Procedure

Document No. : HP ZBook Studio 16 inch G9 disassembly SOP

Station: 6(1/1)

Operation Name : Disassembly Trans FPC

Ver. : 0.10

Edit date : 2021/12/15

Step :

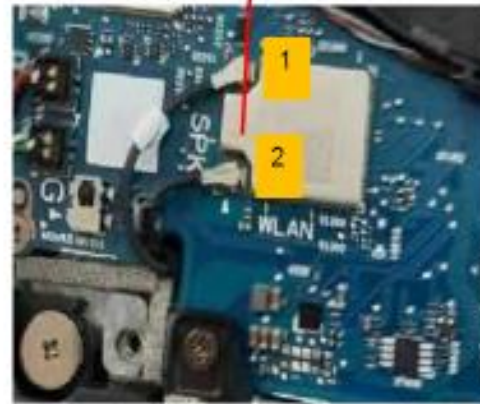
1. Tear off trans board anti short Mylar as Pic.1
2. Remove Trans FPC As Pic.2.
3. Remove the antenna PC chip and unplug the antenna cable terminal as Pic.3.



Pic.1



Pic.2



Pic.3

WLAN

Notice: Please inform production line leader or master if you found any abnormal..

Fixture list (Spec.)	Qty	Symbol							
		Safe	Quality	Order	Fixture	Hear	Look	Do	Static



Standard Operation Procedure

Document No. : HP ZBook Studio 16 inch G9 disassembly SOP

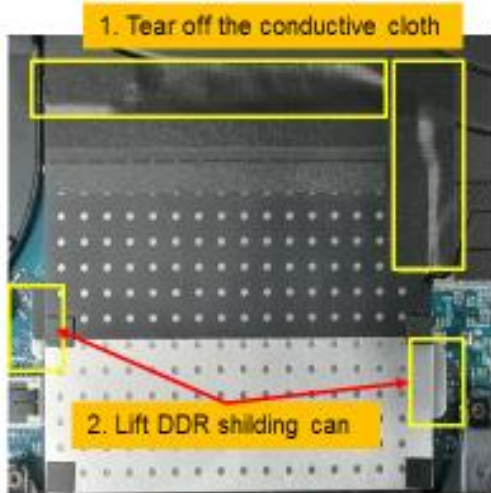
Station: 7(1/1)

Operation Name : Disassembly DDR

Ver. :0.10 Edit date : 2021/12/15

Step :

1. Remove DDR shielding as Pic.1
2. Remove DDR as Pic.2.



Pic.1



Pic.2

Notice: Please inform production line leader or master if you found any abnormal..

Fixture list (Spec.)	Qty	Symbol							
Ionizer	1								
		Safe	Quality	Order	Fixture	Hear	Look	Do	Static



Standard Operation Procedure

Document No. : HP ZBook Studio 16 inch G9 disassembly SOP

Station: 14(1/1)

Operation Name : Disconnect Audio FPC

Ver. :0.10 Edit date : 2021/12/15

Step :

1. Separate the small battery back glue from Top (Pic.1)
2. Disconnect Audio FPC from MB connector (Pic.2)

Pic.1



Pic.2



RTC Battery

Notice: Please inform production line leader or master if you found any abnormal..

Fixture list (Spec.)	Qty	Symbol							
		Safe	Quality	Order	Fixture	Hear	Look	Do	Static



Standard Operation Procedure

Document No. : HP ZBook Studio 16 inch G9 disassembly SOP

Station: 16(1/1)

Operation Name : Loosen M/B screw

Ver. :0.10 Edit date: 2021/12/15

Step :

1. Loosen MB screw*6 pcs as Pic.1

❖ Screw specification: M2*4.5

❖ Torque : 1.5 ± 0.2 Kgf · cm

❖ Screw can not be slipped

Main Board

Pic.1



Notice: Please inform production line leader or master if you found any abnormal..

Fixture list (Spec.)	Qty	Symbol							
Electric screwdriver#1	1								
		Safe	Quality	Order	Fixture	Hear	Look	Do	Static



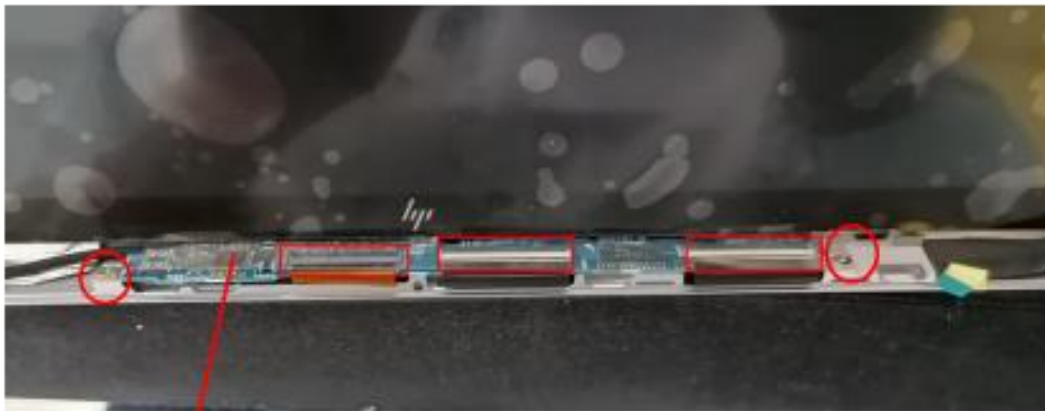
Standard Operation Procedure

Document No. : HP ZBook Studio 16 inch G9 disassembly SOP Station: 27 (1/1)
Operation Name : 拆Touch/B Ver. : 0.10 Edit date : 2021/12/15

Step :

For Touch SKU :

1. Loosen touch board screw *2 pcs
 - ❖ Screw specification: M1.6*2.5
 - ❖ Torque: 1.0± 0.2 kgf · cm
 - ❖ Screw can not be slipped
2. Disconnect EDP cable and panel FPC from touch board
3. Remove touch board from the hinge up part



Touch panel control board

Notice: Please inform production line leader or master if you found any abnormal..

Fixture list (Spec.)	Qty	Symbol							
Electric screwdriver#1	1								
		Safe	Quality	Order	Fixture	Hear	Look	Do	Static



Standard Operation Procedure

Document No. : HP ZBook Studio 16 inch G9 disassembly SOP

Station: 28(1/3)

Operation Name : Disassembly LCD

Ver. : 0.10

Edit date : 2021/12/15

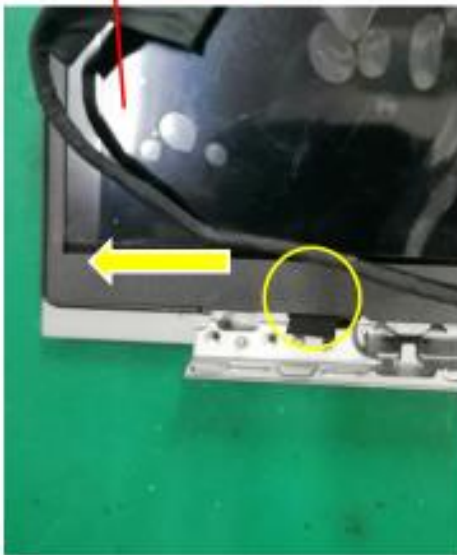
Step :

For Non-touch SKU

1. Use tweezers to clamp out the head of Easy pull adhesive, pull it to the left, pull Easy pull adhesive down and pull out it.
2. Pull out the Easy pull adhesive on the right side in the same way.
 - ❖ Pull Easy pull adhesive down

LCD

Pic.1



Pic.2



Notice: Please inform production line leader or master if you found any abnormal..

Fixture list (Spec.)	Qty	Symbol							
Tweezers	1								
		Safe	Quality	Order	Fixture	Hear	Look	Do	Static



Standard Operation Procedure

Document No. : HP ZBook Studio 16 inch G9 disassembly SOP

Station: 29(1/1)

Operation Name : Disassembly LCD cable

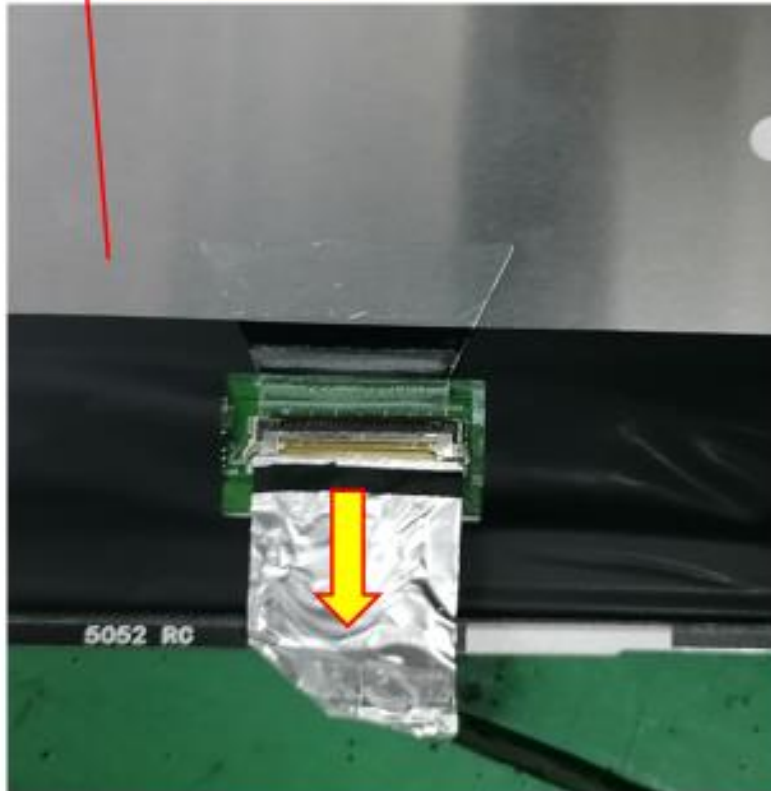
Ver. :0.10

Edit date : 2021/12/15

Step :

1. Tear down EDP cable from panel connector.
2. Take out EDP cable from trough.
3. For Privacy panel, disassembly FFC from panel connector

LCD



Notice: Please inform production line leader or master if you found any abnormal..

Fixture list (Spec.)	Qty	Symbol							
		Safe	Quality	Order	Fixture	Hear	Look	Do	Static



Standard Operation Procedure

Document No. : HP ZBook Studio 16 inch G9 disassembly SOP Station: 35(1/1)
 Operation Name : Disassembly Motion board Ver. : 0.10 Edit date : 2021/12/15

Step :

1. Disconnect Motion FFC from sensor Board and Motion board
2. Remove Motion board



Motion Board

Notice: Please inform production line leader or master if you found any abnormal..

Fixture list (Spec.)	Qty	Symbol							
		Safe	Quality	Order	Fixture	Bear	Look	Do	Static



Standard Operation Procedure

Document No. : HP ZBook Studio 16 inch G9 disassembly SOP

Station: 36(1/1)

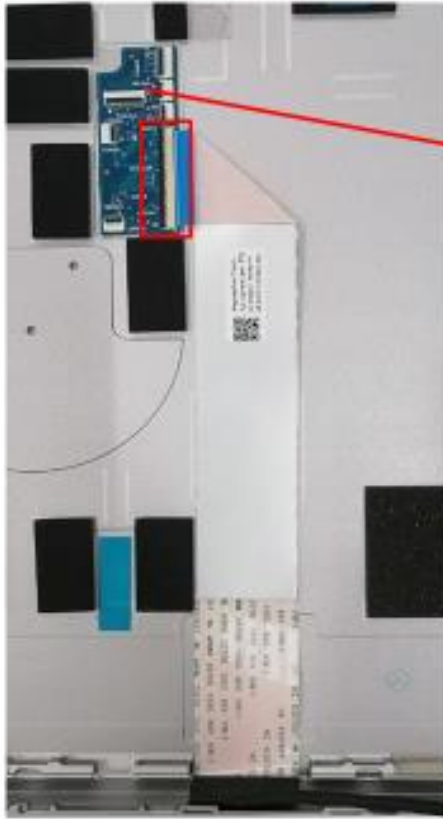
Operation Name : Disassembly sensor board

Ver. : 0.10

Edit date : 2021/12/15

Step :

1. Disconnect the FFC of Camera cable from sensor board
2. Remove Camera cable
3. Remove Sensor Board



Sensor Board

Notice: Please inform production line leader or master if you found any abnormal..

Fixture list (Spec.)	Qty	Symbol							
		Safe	Quality	Order	Fixture	Hear	Look	Do	Static



Standard Operation Procedure

Document No. : HP ZBook Studio 16 inch G9 disassembly SOP

Station: 23(1/1)

Operation Name : Disassembly Trans board

Ver. :0.10

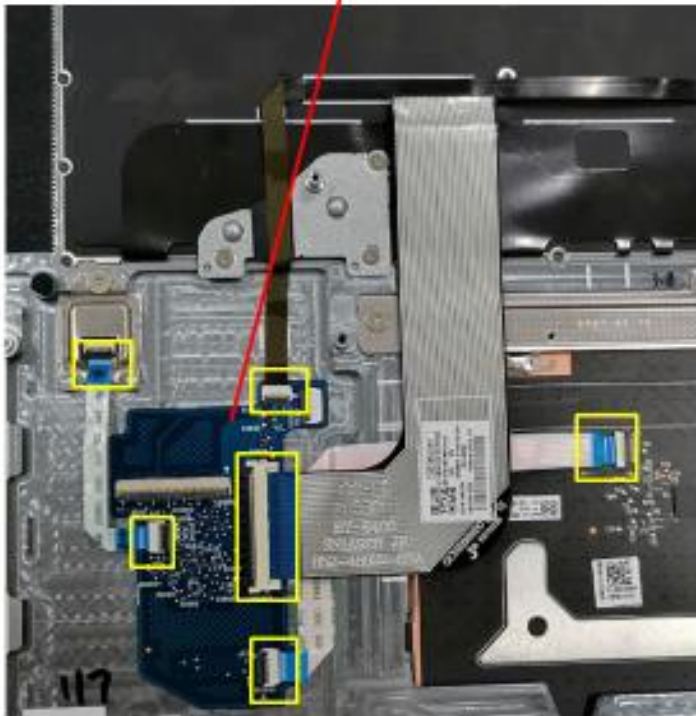
Edit date : 2021/12/15

Trans Board

Step :

1. Disconnect KB membrane / CP FFC / BL FPC / FGR FFC from the trans board connector in turn
2. Disconnect Finger FFC from finger connector, and disconnect CP FFC from CP connector.
3. Remove Trans Board

Pic. 1



Notice: Please inform production line leader or master if you found any abnormal..

Fixture list (Spec.)	Qty	Symbol							
		Safe	Quality	Order	Fixture	Hear	Look	Do	Static