



## Product End-of-Life Disassembly Instructions

**Product Category: Notebooks and Tablet PCs**

### Marketing Name / Model [List multiple models if applicable.]

HP Elite x360 830 13 inch G10 2-in-1 Notebook PC ENERGY STAR

HP Elite x360 830 G10 2-in-1

Name / Model #3

Name / Model #4

**Purpose:** The document is intended for use by end-of-life recyclers or treatment facilities. It provides the basic instructions for the disassembly of HP Inc. products to remove components and materials requiring selective treatment, as defined by EU directive 2012/19/EC, Waste Electrical and Electronic Equipment (WEEE).

NOTE: Recyclers should sort plastic materials into resin streams for recycling based on the ISO 11469 plastic marking code on the plastic part. For any questions on plastic marking or identification of location of parts or components requiring selective treatment, please contact [HP's Sustainability Contact](#).

### 1.0 Items Requiring Selective Treatment

1.1 Items listed below are classified as requiring selective treatment. An "X" in the list of components and parts indicates the product contains the component or part requiring selective treatment

Item Description	Components and parts requiring selective treatments	Quantity of items included in product
Printed Circuit Boards (PCB) or Printed Circuit Assemblies (PCA) with a surface greater than 10 sq cm	<input checked="" type="checkbox"/> Main board (MB) PCB <input type="checkbox"/> Solid state drive (SSD) PCB <input checked="" type="checkbox"/> Wireless WAN module (WWAN) PCB <input checked="" type="checkbox"/> External power supply (EPS) PCB <input type="checkbox"/> External Keyboard (KB) <input type="checkbox"/> External Mouse <input checked="" type="checkbox"/> Others: Transfer board PCB	
Batteries, excluding Li-Ion batteries. This includes standard alkaline, coin or button style batteries	RTC battery	1
Li-Ion batteries. Includes all Li-Ion batteries if more than one is provided with the product (such as a detachable notebook keyboard battery, etc.)	Battery(ies) are attached to the product by: <input checked="" type="checkbox"/> screws <input type="checkbox"/> snaps <input type="checkbox"/> adhesive <input type="checkbox"/> other. Explain _____	1
Mercury-containing components. For example, mercury in lamps, display backlights, scanner lamps, switches, batteries		0
Liquid Crystal Displays (LCD) with a surface greater than	<input checked="" type="checkbox"/> Panel LCD	1

EL-MF877-00  
Template Revision D

Page 1

last updated 3-March-2022

HP Inc. instructions for this template are available at [EL-MF877-01](#)

Item Description	Components and parts requiring selective treatments	Quantity of items included in product
100 sq cm. Includes background illuminated displays with gas discharge lamps		
Cathode Ray Tubes (CRT)		0
Capacitors / condensers (Containing PCB/PCT)		0
Electrolytic Capacitors / Condensers measuring greater than 2.5 cm in diameter or height	[    ] Power Supply capacitor(s) or condenser(s)	0
External electrical cables and cords	[ x ] AC power cord [    ] Audio, video or data cables [    ] Other:	1
Gas Discharge Lamps		0
Plastics containing Brominated Flame Retardants (not including external electrical cables and cords, PCBs or PCAs already listed as a separate item above)		0
Components and parts containing toner and ink, including liquids, semi-liquids (gel/paste) and toner. Include the cartridges, print heads, tubes, vent chambers, and service stations.		0
Components and waste containing asbestos		0
Components, parts and materials containing refractory ceramic fibers		0
Components, parts and materials containing radioactive substances		0
Components containing chlorofluorocarbons (CFC), hydrochlorofluorocarbons (HCFC) or hydrofluorocarbons (HFC), hydrocarbons (HC)		0

## 2.0 Tools Required

List of the type and size of the tools that would typically be used to disassemble the product to a point where components and materials requiring selective treatment can be removed.

Tool Description	Tool Size (if applicable)
[x] #1 screwdriver (Cross)	Electric cross screwdriver

## 3.0 Product Disassembly Process

EL-MF877-00  
Template Revision D

Page 2

last updated 3-March-2022

3.1 List the basic steps that should typically be followed to remove components and materials requiring selective treatment including the required steps to remove the external enclosure.

1. Follow steps described in each operation name of Disassembly instruction in 3.2 section.
2. If parts can be removed without using a tool, remove it first
3. Use correct screwdriver and torque value before unlock the screw

NOTE - For disassembly instructions of the external power supply (EPS), external keyboard (KB) external mouse and external cables and cords, refer to the links below:

- [Generic External Power Supply \(EPS\)](#)
- [Generic cables and cords](#)

3.2 Optional Graphic. If the disassembly process is complex, insert a graphic illustration below to identify the items contained in the product that require selective treatment (with descriptions and arrows identifying locations).



# Standard operation guideline

**Sub-assembly name:** Warg 13X disassemble SOP

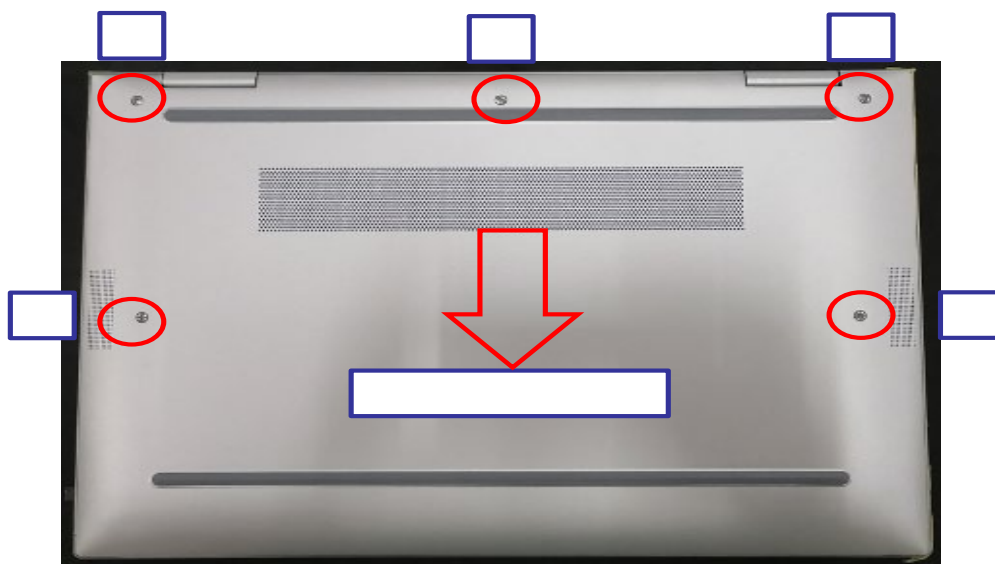
Station : \_\_\_\_\_

Operation name :

Ver. : \_\_\_\_\_

Date : \_\_\_\_\_

Step :



Notice : If have exception , please immediately notify offline handing

Tool list(Tool rule)	Qua								
		Saf e	qual ity	Ol de r	To ol	li st en	Loo k	Hand	Sta tic

on Scrap style : Tear up

# Standard operation guideline

**Sub-assembly name:** Warg 13X disassemble SOP

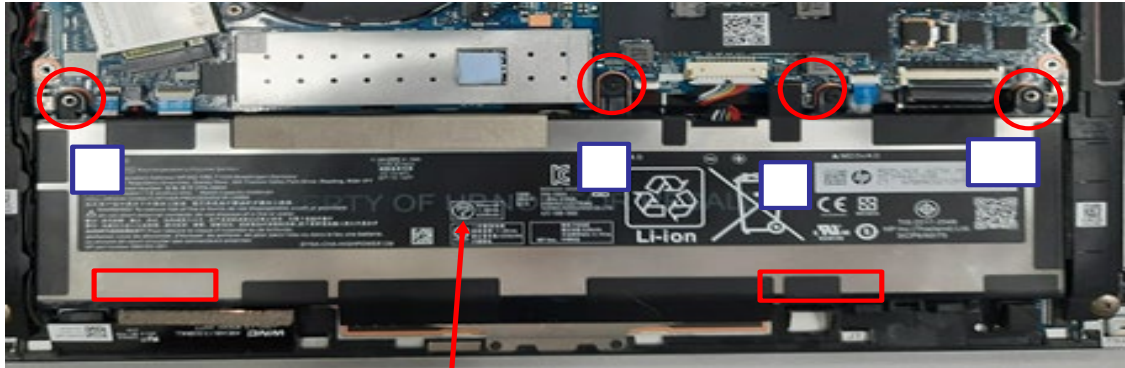
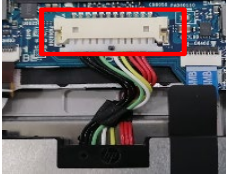
Station : \_\_\_\_\_

Operation name :

Ver. : \_\_\_\_\_

Date : \_\_\_\_\_

Step :



**Notice :** If have exception , please immediately notify offline handing

Tool list(Tool rule)	Qua								
		Saf e	qual ity	Ol de r	To ol	li st en	Loo k	Hand	Sta tic

on Scrap style : Tear up

# Standard operation guideline

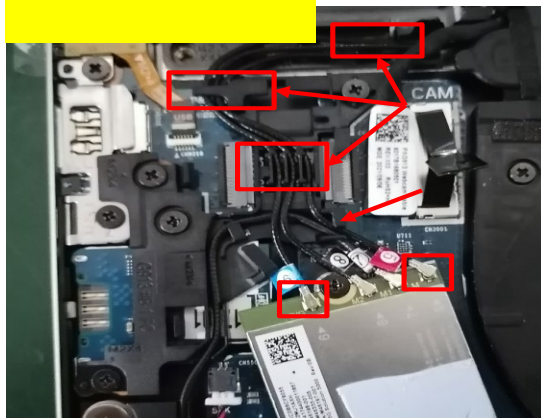
**Sub-assembly name:** Warg 13X disassemble SOP

Station : \_\_\_\_\_

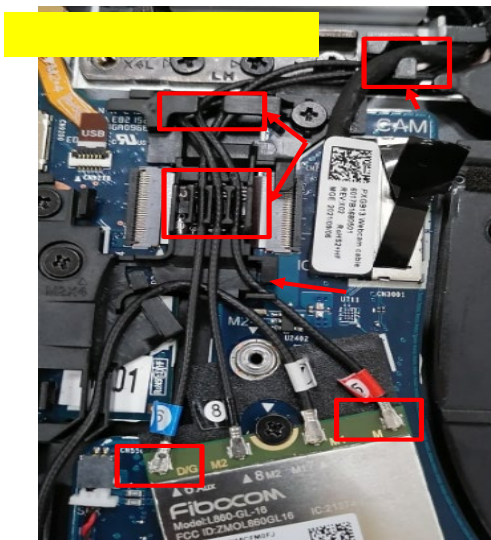
Operation name :

Ver. : \_\_\_\_\_

Date : \_\_\_\_\_



Step :



Notice : If have exception , please immediately notify offline handing

Tool list(Tool rule)	Qua								
		Safe	quality	Order	Tool	listen	Look	Hand	Static

on Scrap style : Tear up

# Standard operation guideline

**Sub-assembly name:** Warg 13X disassemble SOP

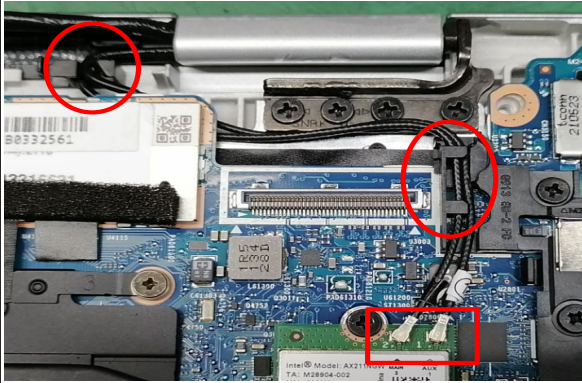
Station : \_\_\_\_\_

Operation name :

Ver. : \_\_\_\_\_

Date : \_\_\_\_\_

**Step :**



**Notice :** If have exception , please immediately notify offline handing

Tool list(Tool rule)	Qua								
		Safe	qual ity	Ol de r	To ol	li st en	Loo k	Hand	Sta tic

on Scrap style : Tear up



# Standard operation guideline

**Sub-assembly name:** Warg 13X disassemble SOP

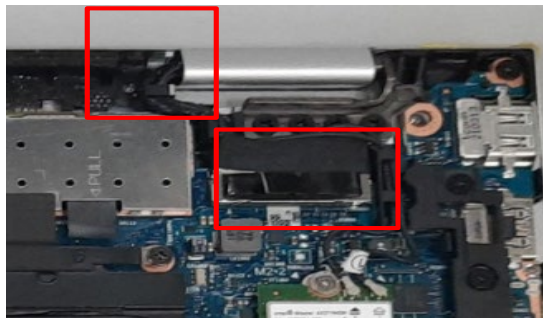
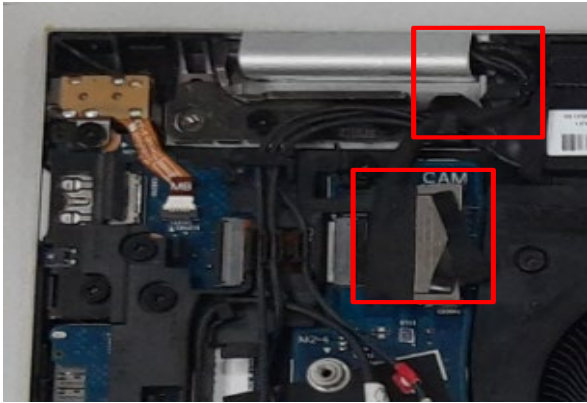
Station : \_\_\_\_\_

Operation name :

Ver. : \_\_\_\_\_

Date : \_\_\_\_\_

Step :



Notice : If have exception , please immediately notify offline handing

Tool list(Tool rule)	Qua								
		Saf e	qual ity	Ol de r	To ol	li st en	Loo k	Hand	Sta tic

on Scrap style : Tear up

# Standard operation guideline

**Sub-assembly name:** Warg 13X disassemble SOP

Station : \_\_\_\_\_

Operation name :

Ver. : \_\_\_\_\_

Date : \_\_\_\_\_

**Step :**



**Notice :** If have exception , please immediately notify offline handing

Tool list(Tool rule)	Qua								
		Safe	quality	Order	Tool	listen	Look	Hand	Static

on Scrap style : Tear up

# Standard operation guideline

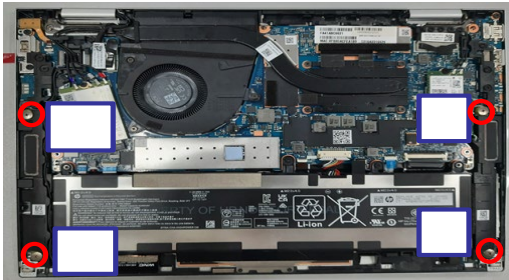
**Sub-assembly name:** Warg 13X disassemble SOP

Station : \_\_\_\_\_

Operation name :

Ver. : \_\_\_\_\_









Date : \_\_\_\_\_



Step :



**Notice :** If have exception , please immediately notify offline handing

Tool list(Tool rule)	Qua								
									
		Saf e	qual ity	Ol de r	To ol	li st en	Loo k	Hand	Sta tic

on Scrap style : Tear up



# Standard operation guideline

**Sub-assembly name:** Warg 13X disassemble SOP

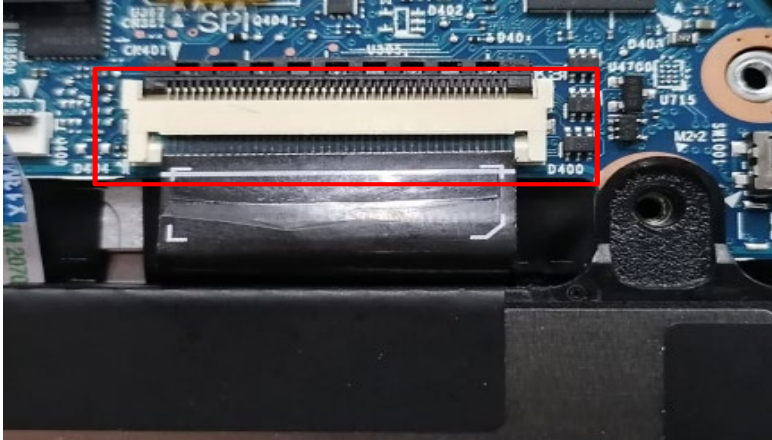
Station : \_\_\_\_\_

Operation name :

Ver. : \_\_\_\_\_

Date : \_\_\_\_\_

Step :



Notice : If have exception , please immediately notify offline handing

Tool list(Tool rule)	Qua								
		Safe	quality	Order	Tool	listen	Look	Hand	Static

on Scrap style : Tear up

# Standard operation guideline

**Sub-assembly name:** Warg 13X disassemble SOP

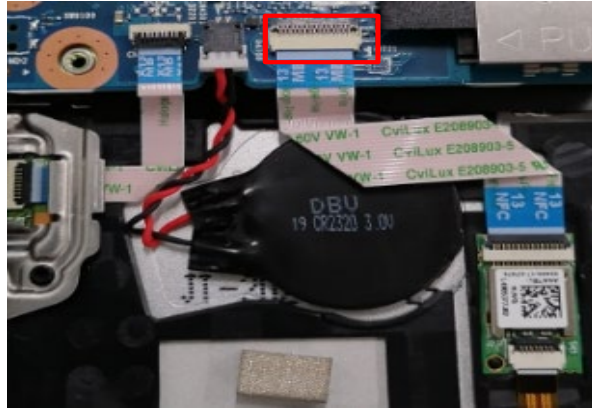
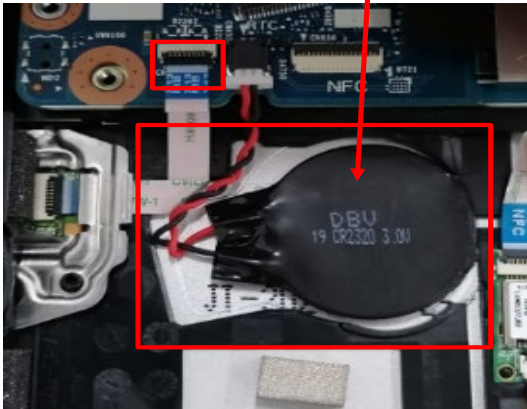
Station : \_\_\_\_\_

Operation name :

Ver. : \_\_\_\_\_

Date : \_\_\_\_\_

Step :



Notice : If have exception , please immediately notify offline handing

Tool list(Tool rule)	Qua								
		Safe	qual ity	Ol de r	To ol	li st en	Loo k	Hand	Sta tic

on Scrap style : Tear up

# Standard operation guideline

**Sub-assembly name:** Warg 13X disassemble SOP

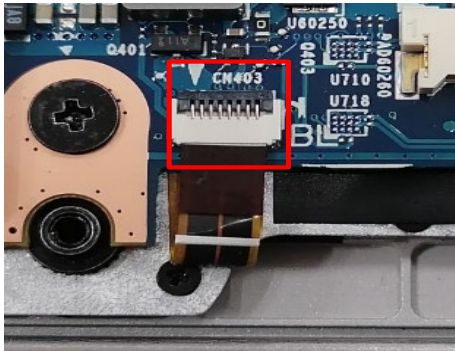
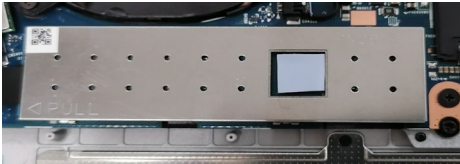
Station : \_\_\_\_\_

Operation name :

Ver. : \_\_\_\_\_

Date : \_\_\_\_\_

**Step :**



**Notice :** If have exception , please immediately notify offline handing

Tool list(Tool rule)	Qua								
		Safe	qual ity	Ol de r	To ol	li st en	Loo k	Hand	Sta tic

on Scrap style : Tear up

# Standard operation guideline

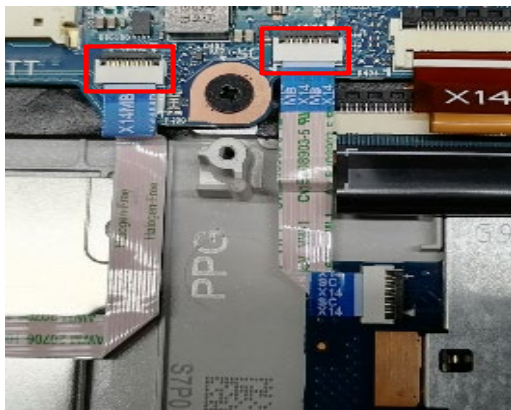
**Sub-assembly name:** Warg 13X disassemble SOP

Station : \_\_\_\_\_

Operation name :

Ver. : \_\_\_\_\_

Date : \_\_\_\_\_



Step :



Notice : If have exception , please immediately notify offline handing

Tool list(Tool rule)	Qua								
		Saf e	qual ity	Ol de r	To ol	li st en	Loo k	Hand	Sta tic

on Scrap style : Tear up

# Standard operation guideline

**Sub-assembly name:** Warg 13X disassemble SOP

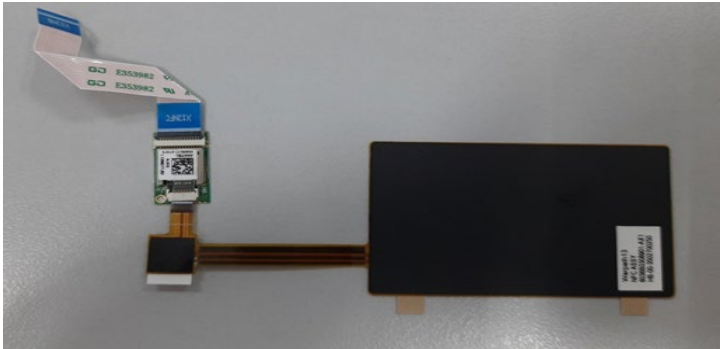
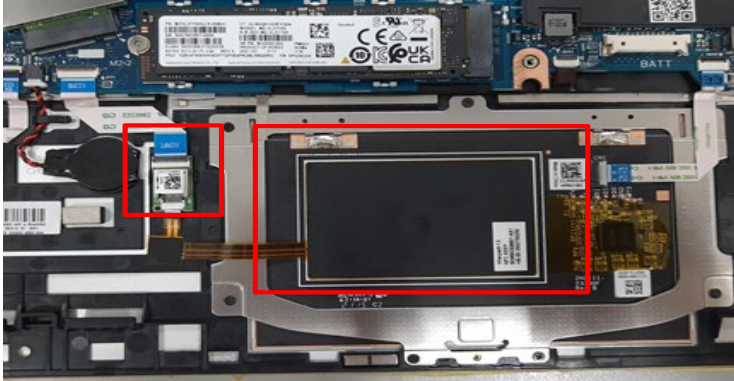
Station : \_\_\_\_\_

Operation name :

Ver. : \_\_\_\_\_

Date : \_\_\_\_\_

Step :



**Notice :** If have exception , please immediately notify offline handing

Tool list(Tool rule)	Qua								
		Saf e	qual ity	Ol de r	To ol	li st en	Loo k	Hand	Sta tic

on Scrap style : Tear up

# Standard operation guideline

Sub-assembly name: Warg 13X disassemble SOP

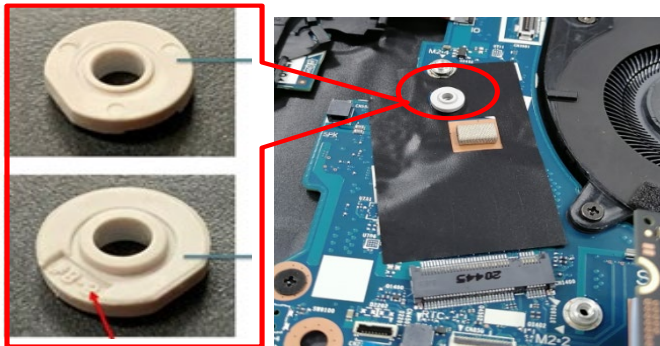
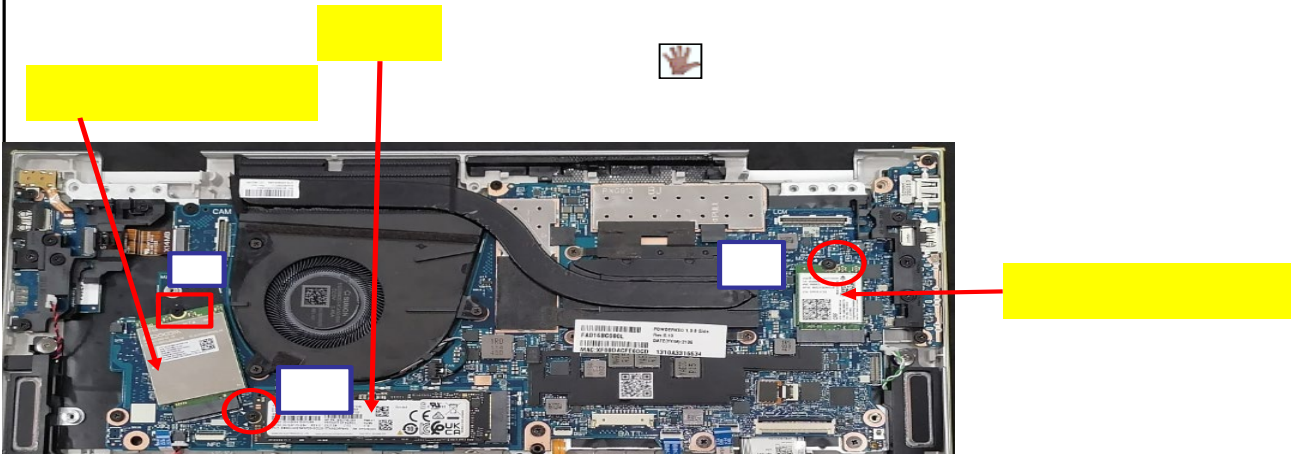
Station : \_\_\_\_\_

Operation name :


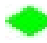






Ver. : \_\_\_\_\_

Date : \_\_\_\_\_

Step :



Notice : If have exception , please immediately notify offline handing

Tool list(Tool rule)	Qua								
		 Saf e	 qual ity	 Ol de r	 To ol	 li st en	 Loo k	 Hand	 Sta tic

on Scrap style : Tear up

# Standard operation guideline

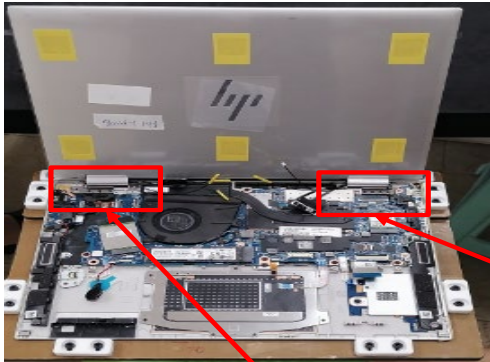
**Sub-assembly name:** Warg 13X disassemble SOP

Station : \_\_\_\_\_

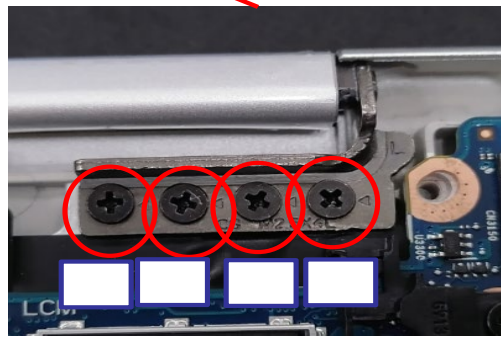
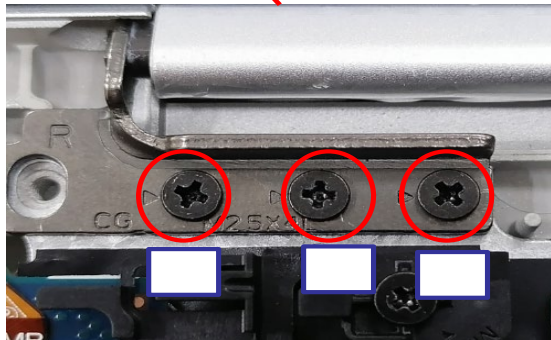
Operation name :

Ver. : \_\_\_\_\_









Date : \_\_\_\_\_



Step :



**Notice :** If have exception , please immediately notify offline handing

Tool list(Tool rule)	Qua								
		 Saf e	 qual ity	 Ol de r	 To ol	 li st en	 Loo k	 Hand	 Sta tic

on Scrap style : Tear up

# Standard operation guideline

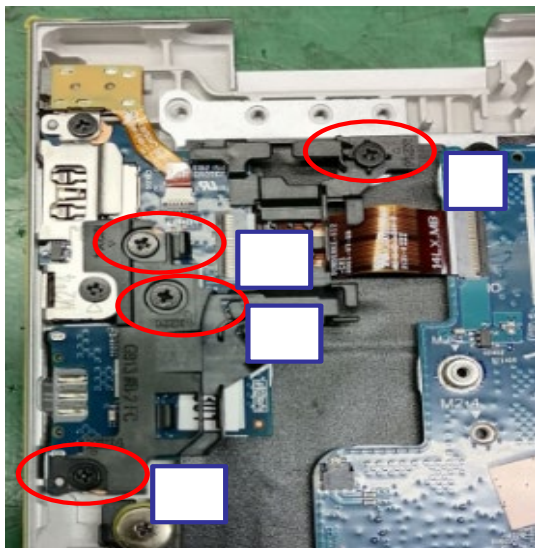
Sub-assembly name: Warg 13X disassemble SOP

Station : \_\_\_\_\_

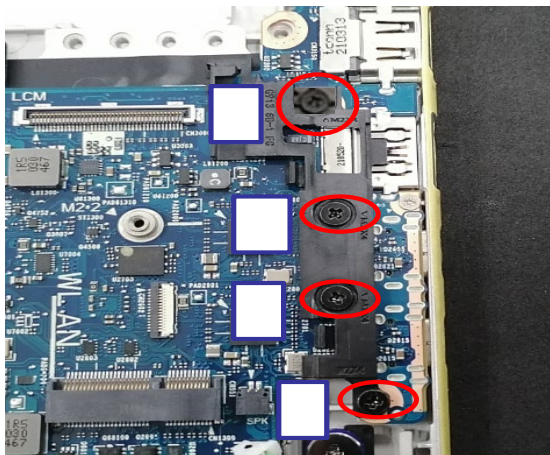
Operation name :

Ver. : \_\_\_\_\_

Date : \_\_\_\_\_



Step :



Notice : If have exception , please immediately notify offline handing

Tool list(Tool rule)	Qua								
		Safe	quality	Order	Tool	listen	Look	Hand	Static

on Scrap style : Tear up

# Standard operation guideline

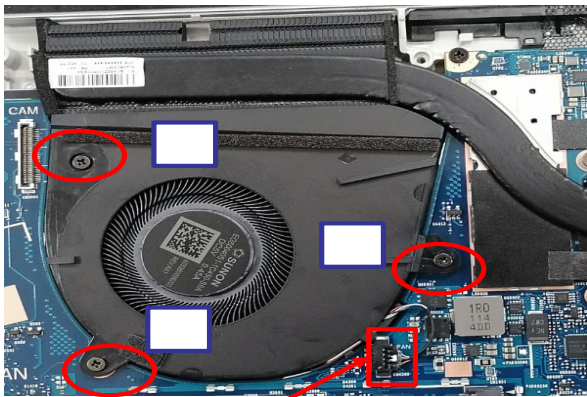
**Sub-assembly name:** Warg 13X disassemble SOP

Station : \_\_\_\_\_

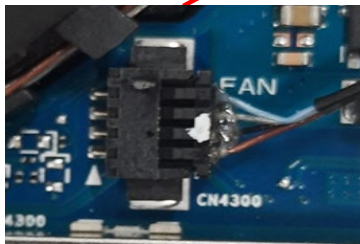
Operation name :

Ver. : \_\_\_\_\_

Date : \_\_\_\_\_



Step :




**Notice :** If have exception , please immediately notify offline handing

Tool list(Tool rule)	Qua								
		Saf e	qual ity	Ol de r	To ol	li st en	Loo k	Hand	Sta tic

on Scrap style : Tear up

# Standard operation guideline

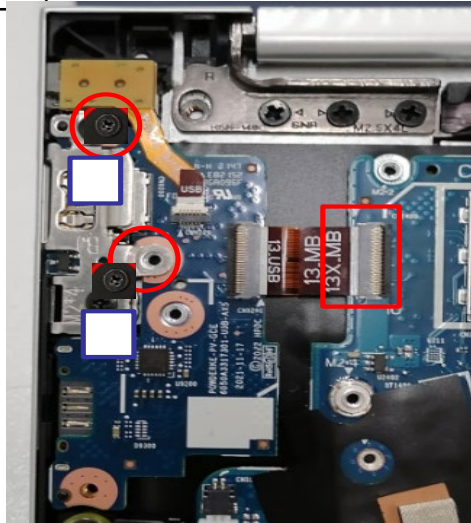
Sub-assembly name: Warg 13X disassemble SOP

Station : \_\_\_\_\_

Operation name :

Ver. : \_\_\_\_\_

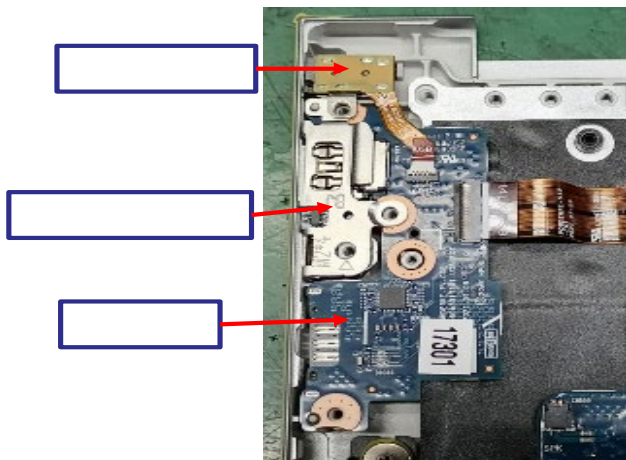
Date : \_\_\_\_\_



Step :



--	--



Notice : If have exception , please immediately notify offline handing

Tool list(Tool rule)	Qua								
		Saf e	qual ity	Ol de r	To ol	li st en	Loo k	Hand	Sta tic

on Scrap style : Tear up

# Standard operation guideline

**Sub-assembly name:** Warg 13X disassemble SOP

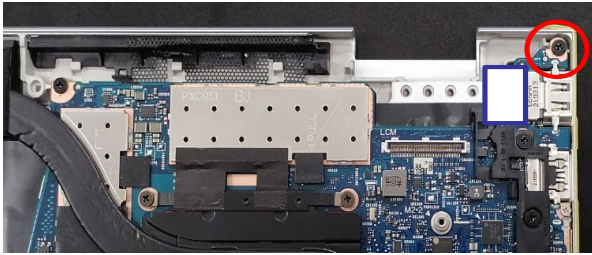
Station : \_\_\_\_\_

Operation name :

Ver. : \_\_\_\_\_

Date : \_\_\_\_\_

Step :



**Notice :** If have exception , please immediately notify offline handing

Tool list(Tool rule)	Qua								
		Saf e	qual ity	Ol de r	To ol	li st en	Loo k	Hand	Sta tic

on Scrap style : Tear up

# Standard operation guideline

Sub-assembly name: Warg 13X disassemble SOP

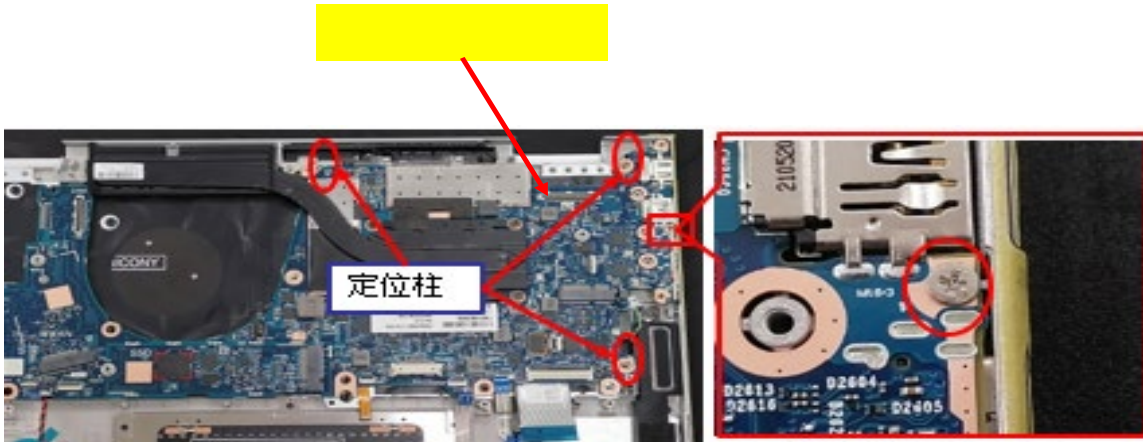
Station : \_\_\_\_\_

Operation name :

Ver. : \_\_\_\_\_

Date : \_\_\_\_\_

Step :



Notice : If have exception , please immediately notify offline handing

Tool list(Tool rule)	Qua								
		Saf e	qual ity	Ol de r	To ol	li st en	Loo k	Hand	Sta tic

on Scrap style : Tear up

# Standard operation guideline

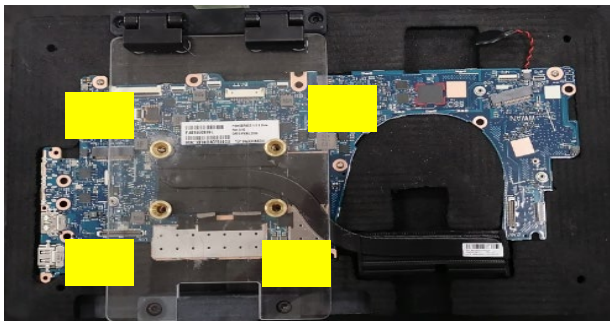
**Sub-assembly name:** Warg 13X disassemble SOP

Station : \_\_\_\_\_

Operation name :

Ver. : \_\_\_\_\_

Date : \_\_\_\_\_



Step :




**Notice :** If have exception , please immediately notify offline handing

Tool list(Tool rule)	Qua								
		Saf e	qual ity	Ol de r	To ol	li st en	Loo k	Hand	Sta tic

on Scrap style : Tear up

# Standard operation guideline

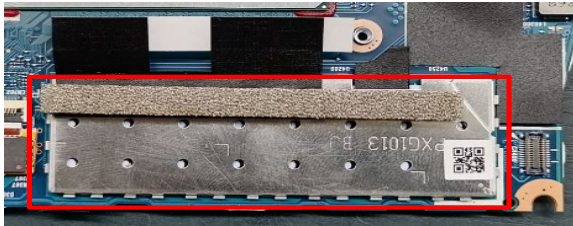
**Sub-assembly name:** Warg 13X disassemble SOP

Station : \_\_\_\_\_

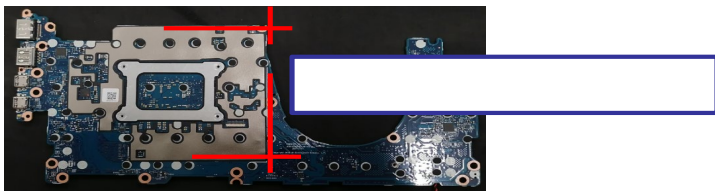
Operation name :

Ver. : \_\_\_\_\_

Date : \_\_\_\_\_



Step :




**Notice :** If have exception , please immediately notify offline handing

Tool list(Tool rule)	Qua								
		Saf e	qual ity	Ol de r	To ol	li st en	Loo k	Hand	Sta tic

on Scrap style : Tear up

# Standard operation guideline

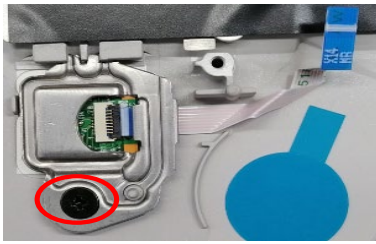
**Sub-assembly name:** Warg 13X disassemble SOP

Station : \_\_\_\_\_

Operation name :

Ver. : \_\_\_\_\_

Date : \_\_\_\_\_



Step :



Notice : If have exception , please immediately notify offline handing

Tool list(Tool rule)	Qua								
		Saf e	qual ity	Ol de r	To ol	li st en	Loo k	Hand	Sta tic

on Scrap style : Tear up

# Standard operation guideline

**Sub-assembly name:** Warg 13X disassemble SOP

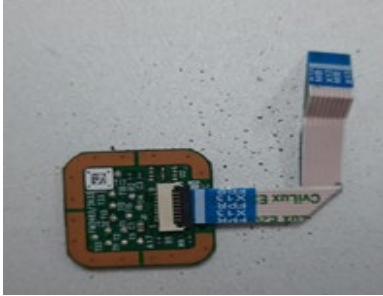
Station : \_\_\_\_\_

Operation name :

Ver. : \_\_\_\_\_

Date : \_\_\_\_\_

**Step :**






**Notice :** If have exception , please immediately notify offline handing

Tool list(Tool rule)	Qua								
		Saf e	qual ity	Ol de r	To ol	li st en	Loo k	Hand	Sta tic

on Scrap style : Tear up

# Standard operation guideline

**Sub-assembly name:** Warg 13X disassemble SOP

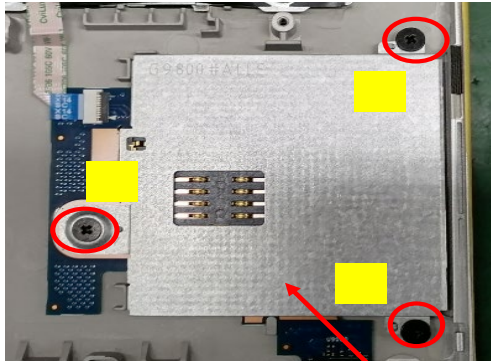
Station : \_\_\_\_\_

Operation name :

Ver. : \_\_\_\_\_

Date : \_\_\_\_\_

**Step :**



**Notice :** If have exception , please immediately notify offline handing

Tool list(Tool rule)	Qua								
		Safe	qual ity	Ol de r	To ol	li st en	Loo k	Hand	Sta tic

on Scrap style : Tear up

# Standard operation guideline

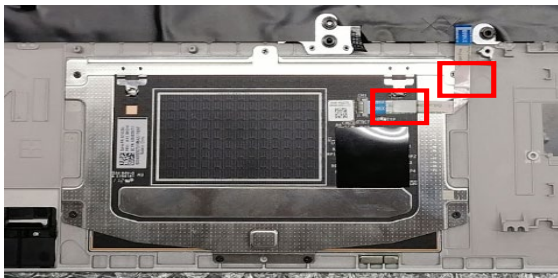
**Sub-assembly name:** Warg 13X disassemble SOP

Station : \_\_\_\_\_

Operation name :

Ver. : \_\_\_\_\_

Date : \_\_\_\_\_

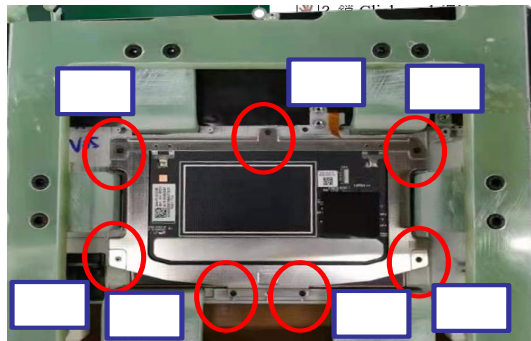
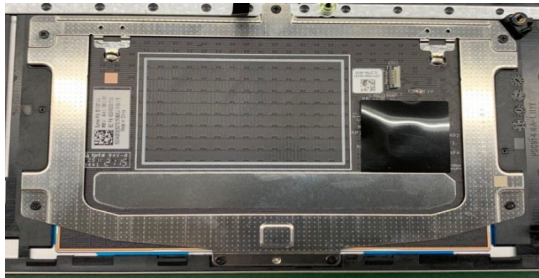


Step :









**Notice :** If have exception , please immediately notify offline handing

Tool list(Tool rule)	Qua								
		Saf e	qual ity	Ol de r	To ol	li st en	Loo k	Hand	Sta tic

on Scrap style : Tear up

# Standard operation guideline

Sub-assembly name: Warg 13X disassemble SOP

Station : \_\_\_\_\_

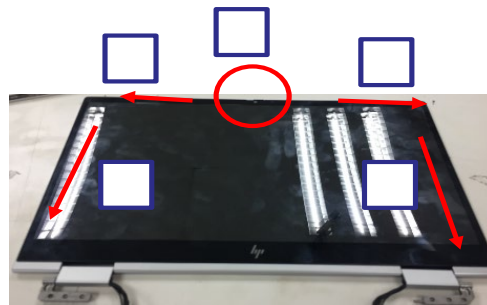
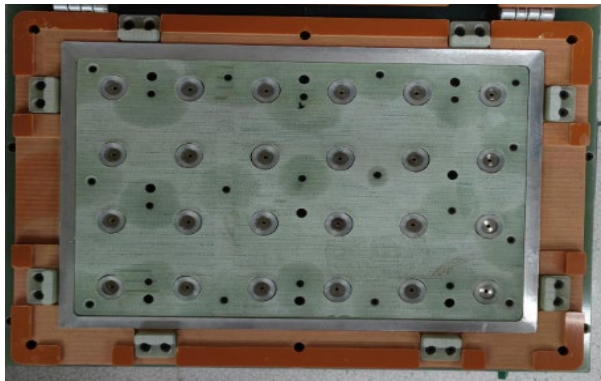
Operation name :

Ver. : \_\_\_\_\_

Date : \_\_\_\_\_



Step :



Notice : If have exception , please immediately notify offline handing

Tool list(Tool rule)	Qua								
		Saf e	qual ity	Ol de r	To ol	li st en	Loo k	Hand	Sta tic

on Scrap style : Tear up

# Standard operation guideline

**Sub-assembly name:** Warg 13X disassemble SOP

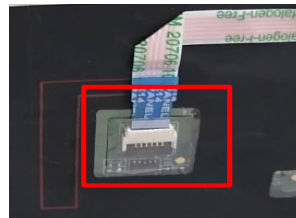
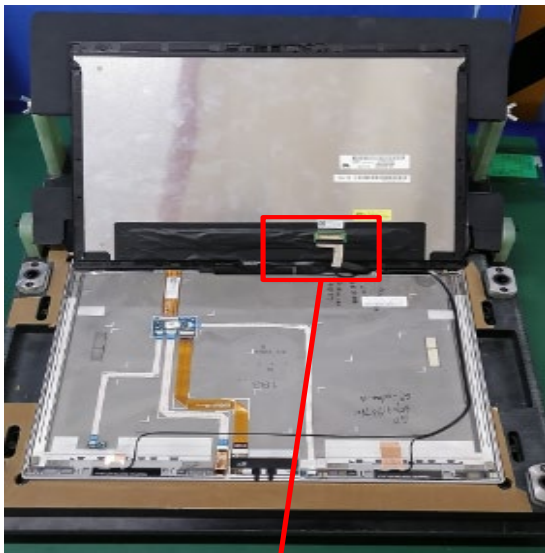
Station : \_\_\_\_\_

Operation name :

Ver. : \_\_\_\_\_

Date : \_\_\_\_\_

Step :



PIC 二

**Notice :** If have exception , please immediately notify offline handing

Tool list(Tool rule)	Qua								
		Saf e	qual ity	Ol de r	To ol	li st en	Loo k	Hand	Sta tic

on Scrap style : Tear up

# Standard operation guideline

**Sub-assembly name:** Warg 13X disassemble SOP

Station : \_\_\_\_\_

Operation name :

Ver. : \_\_\_\_\_

Date : \_\_\_\_\_



Step :






**Notice :** If have exception , please immediately notify offline handing

Tool list(Tool rule)	Qua								
		Saf e	qual ity	Ol de r	To ol	li st en	Loo k	Hand	Sta tic

on Scrap style : Tear up

# Standard operation guideline

Sub-assembly name: Warg 13X disassemble SOP

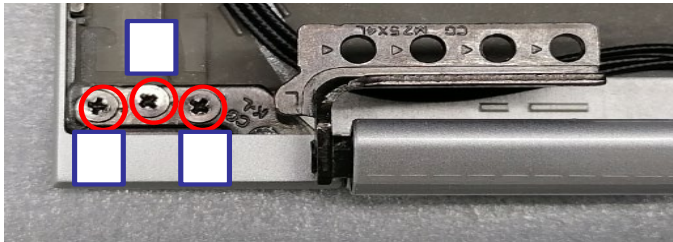
Station : \_\_\_\_\_

Operation name :

Ver. : \_\_\_\_\_

Date : \_\_\_\_\_

Step :



PIC—

Notice : If have exception , please immediately notify offline handing

Tool list(Tool rule)	Qua								
		Saf e	qual ity	Ol de r	To ol	li st en	Loo k	Hand	Sta tic

on Scrap style : Tear up

# Standard operation guideline

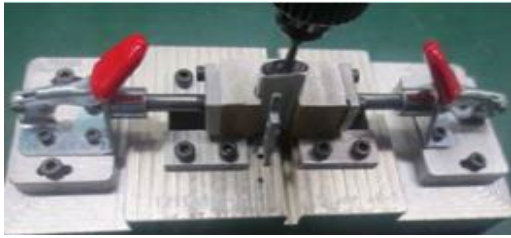
**Sub-assembly name:** Warg 13X disassemble SOP

Station : \_\_\_\_\_

Operation name :

Ver. : \_\_\_\_\_

Date : \_\_\_\_\_



Step :



Notice : If have exception , please immediately notify offline handing

Tool list(Tool rule)	Qua								
					工具	耳听	观察	手动	静电

on Scrap style : Tear up

# Standard operation guideline

**Sub-assembly name:** Warg 13X disassemble SOP

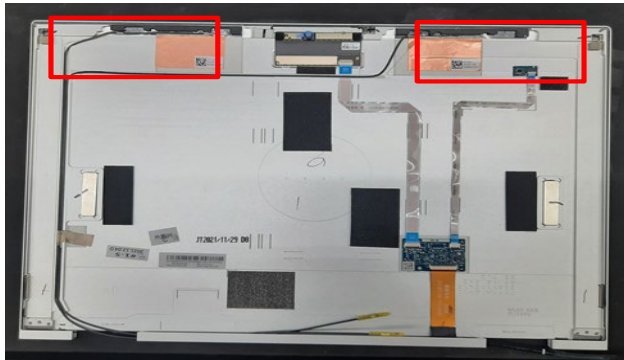
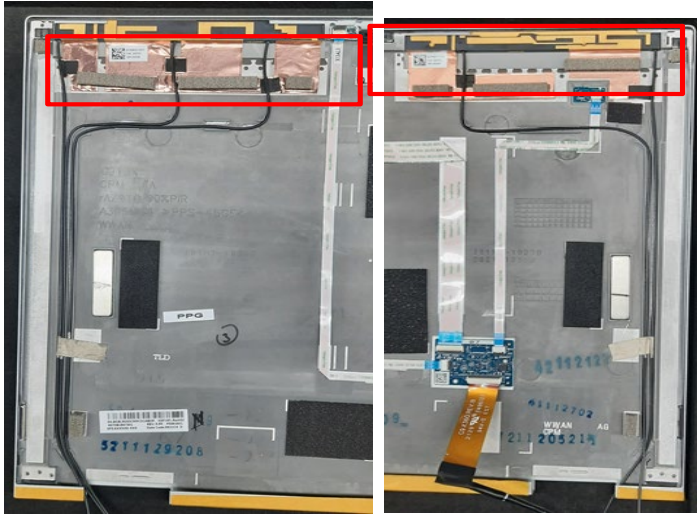
Station : \_\_\_\_\_

Operation name :

Ver. : \_\_\_\_\_

Date : \_\_\_\_\_

Step :



**Notice :** If have exception , please immediately notify offline handing

Tool list(Tool rule)	Qua								
		Safe	qual ity	Ol de r	To ol	li st en	Loo k	Hand	Sta tic

on Scrap style : Tear up

# Standard operation guideline

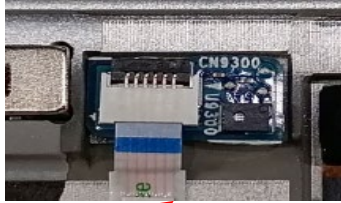
Sub-assembly name: Warg 13X disassemble SOP

Station : \_\_\_\_\_

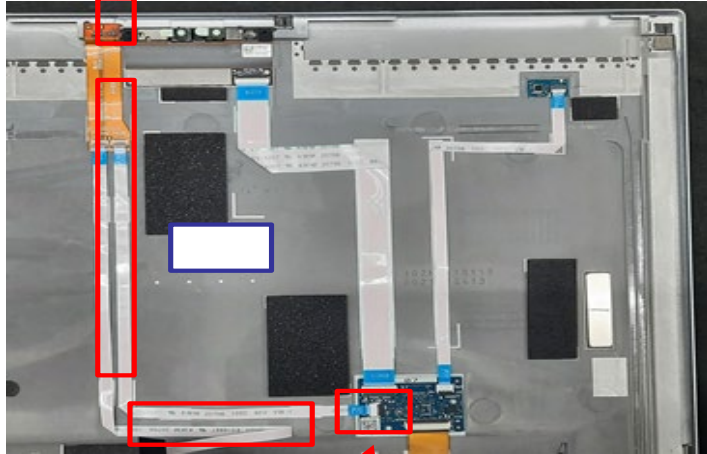
Operation name :

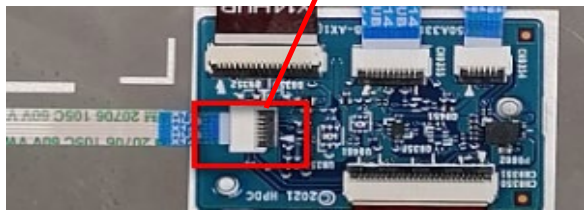
Ver. : \_\_\_\_\_

Date : \_\_\_\_\_



Step :



Notice : If have exception , please immediately notify offline handing

Tool list(Tool rule)	Qua								
		Saf e	qual ity	Ol de r	To ol	li st en	Loo k	Hand	Sta tic

on Scrap style : Tear up

# Standard operation guideline

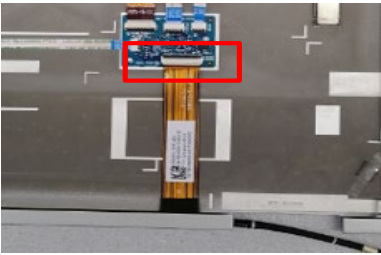
**Sub-assembly name:** Warg 13X disassemble SOP

Station : \_\_\_\_\_

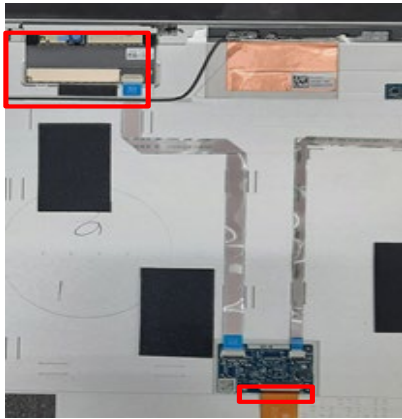
Operation name :

Ver. : \_\_\_\_\_

Date : \_\_\_\_\_



Step :



**Notice :** If have exception , please immediately notify offline handing

Tool list(Tool rule)	Qua								
		Saf e	qual ity	Ol de r	To ol	li st en	Loo k	Hand	Sta tic

on Scrap style : Tear up

# Standard operation guideline

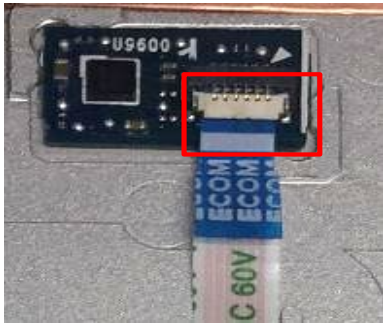
**Sub-assembly name:** Warg 13X disassemble SOP

Station : \_\_\_\_\_

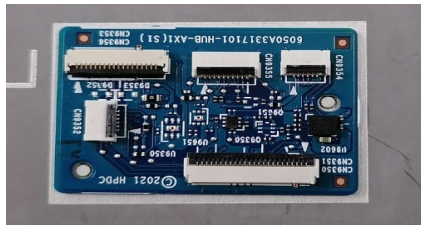
Operation name :

Ver. : \_\_\_\_\_

Date : \_\_\_\_\_



Step :



**Notice :** If have exception , please immediately notify offline handing

Tool list(Tool rule)	Qua								
		Safe	quality	Order	Tool	listen	Look	Hand	Static

on Scrap style : Tear up

