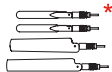
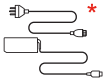
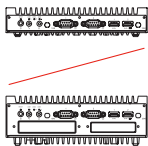
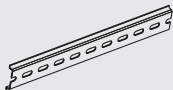
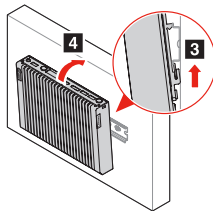
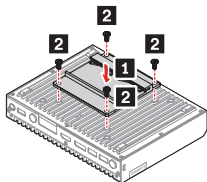


ThinkEdge SE10

<https://smartsupport.lenovo.com>



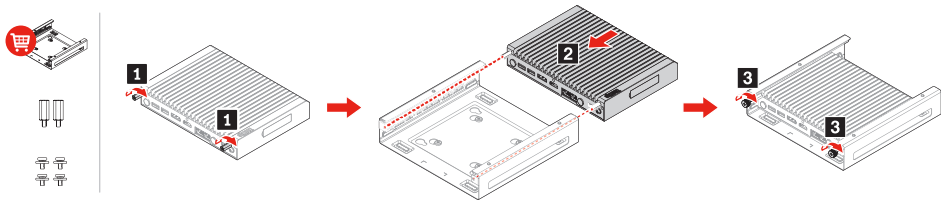
DIN Bracket Kit



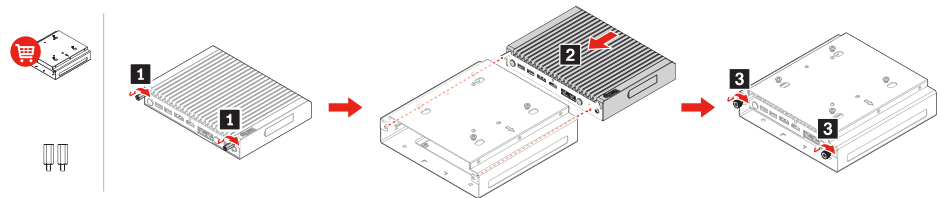
Prepare a rail before installing the DIN bracket kit.

* For selected models

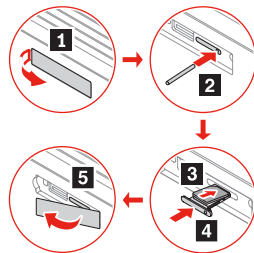
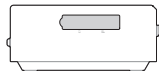
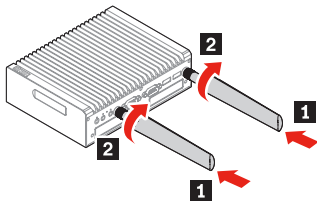
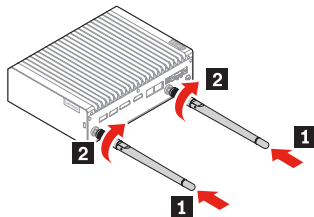
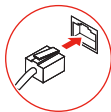
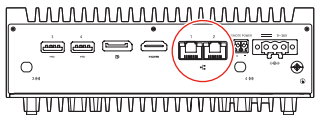
Tiny VESA Mount



Tiny Sandwich Kit

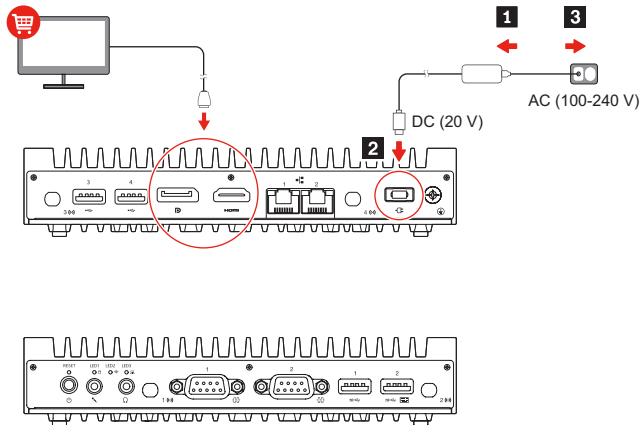


<https://www.lenovo.com/accessories>

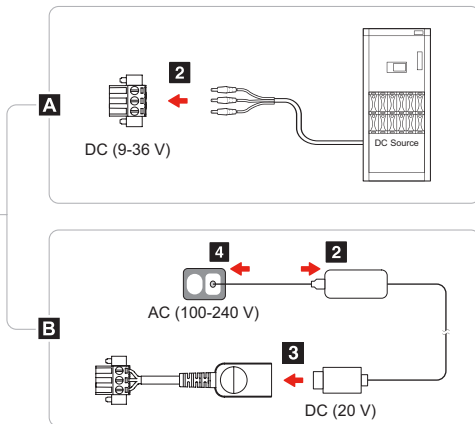
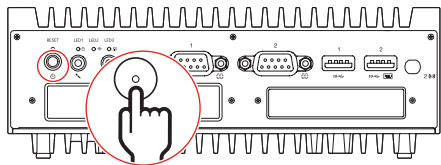
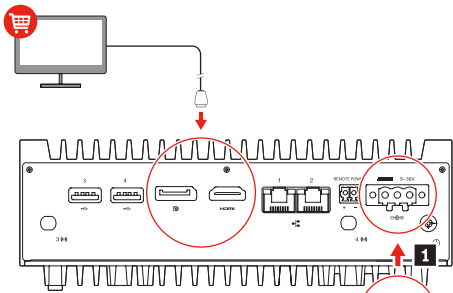




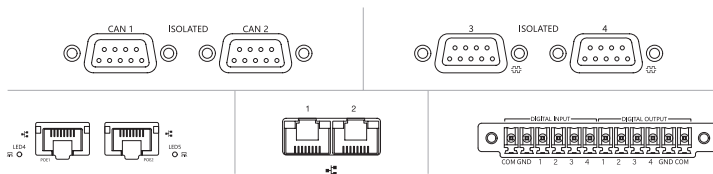
SE10



SE10-I



Customize your computer



You can configure the customizable connectors to support devices, including but not limited to the following:



Self-help resources



Scan the *User Guide* QR code to learn more information about the product.



Win10 IoT Enterprise 2021 LTSC

https://learn.microsoft.com/windows/iot/iot-enterprise/getting_started

Ubuntu Server

<https://ubuntu.com/server/docs>

Ubuntu Core

<https://ubuntu.com/core/docs>

[English]

European Union (EU) / United Kingdom (UK) — radio frequency and power

This radio equipment operates with the following frequency bands and maximum radio-frequency power:

Technology	Frequency band [MHz]	Maximum transmit power
WLAN 802.11b/g/n/ax	2400 - 2483.5	< 20 dBm

Technology	Frequency band [MHz]	Maximum transmit power
WLAN 802.11a/n/ac/ax	5150 - 5725	< 23 dBm
WLAN 802.11a/n/ac/ax	5725 - 5875	< 13.98 dBm
Bluetooth BR/EDR/LE	2400 - 2483.5	< 20 dBm
Quectel EM05-G (UMTS)	1/8	< 25.5 dBm
Quectel EM05-G (LTE)	1/3/7/8/20/28/38/40/41	< 25.5 dBm

Note: Not all wireless bands may be enabled depending on your product configuration. Usage of this device is limited to indoor locations in the bands 5150 - 5350 MHz.

For FSC Mix logo only

Second Edition (June 2023)
© Copyright Lenovo 2023.

LENOVO, LENOVO logo, ThinkEdge, and ThinkEdge logo are trademarks of Lenovo. The terms HDMI and HDMI High-Definition Multimedia Interface are trademarks or registered trademarks of HDMI Licensing LLC in the United States and other countries. DisplayPort is a trademark of the Video Electronics Standards Association. All other trademarks are the property of their respective owners.

LIMITED AND RESTRICTED RIGHTS NOTICE: If data or software is delivered pursuant to a General Services Administration "GSA" contract, use, reproduction, or disclosure is subject to restrictions set forth in Contract No. GS-35F-05925.



Reduce
Reuse
Recycle