

Getac

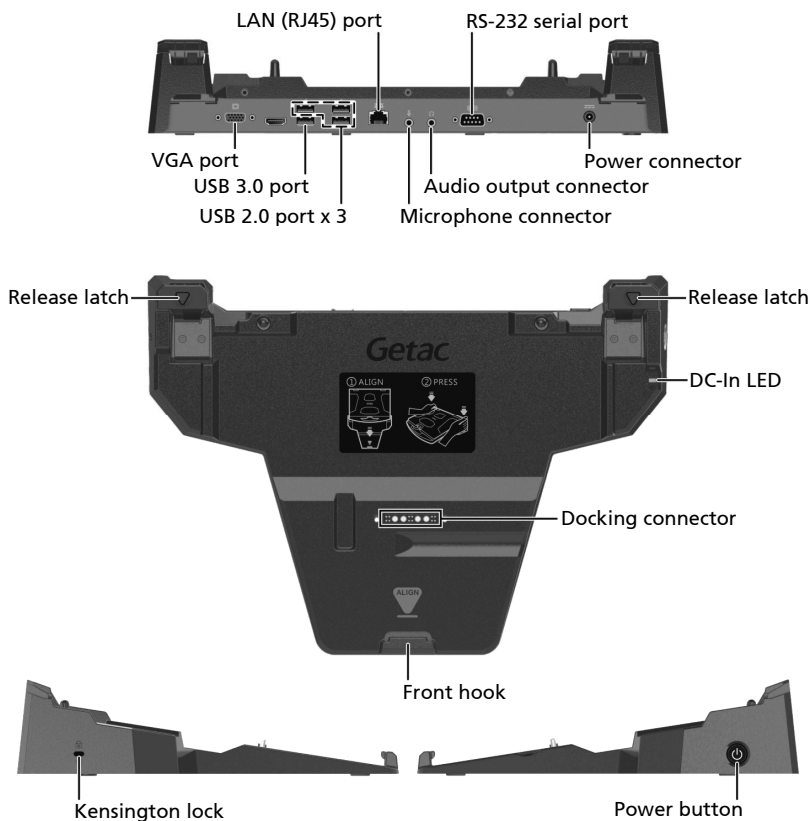
S410

OFFICE DOCK
USER GUIDE

1. Introduction

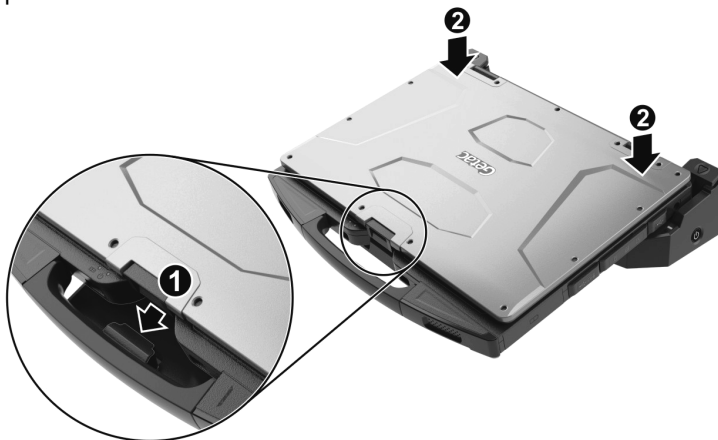
The office dock duplicates most of your computer's ports and provides extra ports.

With peripherals such as a keyboard, mouse, monitor, and printer all connected to the office dock, you have a handy work area on your desk.



2. Installation

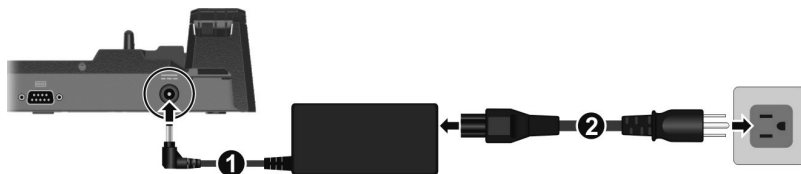
1. Align the front center of S410 with the front hook on the office dock and put down the front edge first (❶). Then, press down the rear corners (❷). The two release latches should click into the locked position.



NOTE: To undock S410, press the two release latches and lift S410 up from the dock.

2. Connect the peripherals' cables to the corresponding connectors on the office dock.
3. Connect the AC adapter to the office dock (❶). Connect the power cord, one end to the AC adapter and the other end to an electrical outlet (❷).

The DC-In LED lights up, indicating power is connected.



4. To power on, you can press either the power button of S410 or the power button of the dock.

NOTE: The power button of the office dock is equivalent to the power button of S410, meaning it works in the same way.

See reverse side for notes and precautions.

3. Notes and Precautions

- **DO NOT** touch the connectors of the office dock.
- **DO NOT** attempt to make connections if there is any object between the computer and the office dock. Doing so could damage the computer and the office dock.
- **DO NOT** attempt to move the office dock when it is connected to the computer.
- If the computer malfunctions while the office dock is connected, turn off the computer and disconnect the office dock. Connect the AC adapter to the computer and check to see if the computer operates normally. If the computer operates normally, the office dock may be malfunctioning.
- **DO NOT** place metal objects or containers of liquid on top of the office dock. If metal objects (such as paper clips and coins) or any liquid spills get inside the office dock, fire or electric shock may result. Immediately unplug the power cable and remove the computer from the office dock.
- Unplug the power cord and remove the computer from the office dock if any of the following occurs:
 - the office dock is damaged
 - smoke is emitted
 - an unusual smell is emitted
 - the office dock is unusually hotContinuing to use the office dock while any of the above conditions are present may result in fire or electric shock.

Getac Contact Information



Company name	Getac Technology GmbH.
Address	Kanzlerstrasse 4 40472 Dusseldorf
Phone	+49 (0) 211-984819-0



Company name	Getac UK Ltd.
Address	Getac House, Stafford Park 12, Telford, Shropshire, TF3 3BJ, UK
Phone	+44 (0) 1952-207-222



Company name	Getac Inc.
Address	15495 Sand Canyon Rd., Suite 350 Irvine, CA 92618 USA
Phone	+1-949-681-2900

