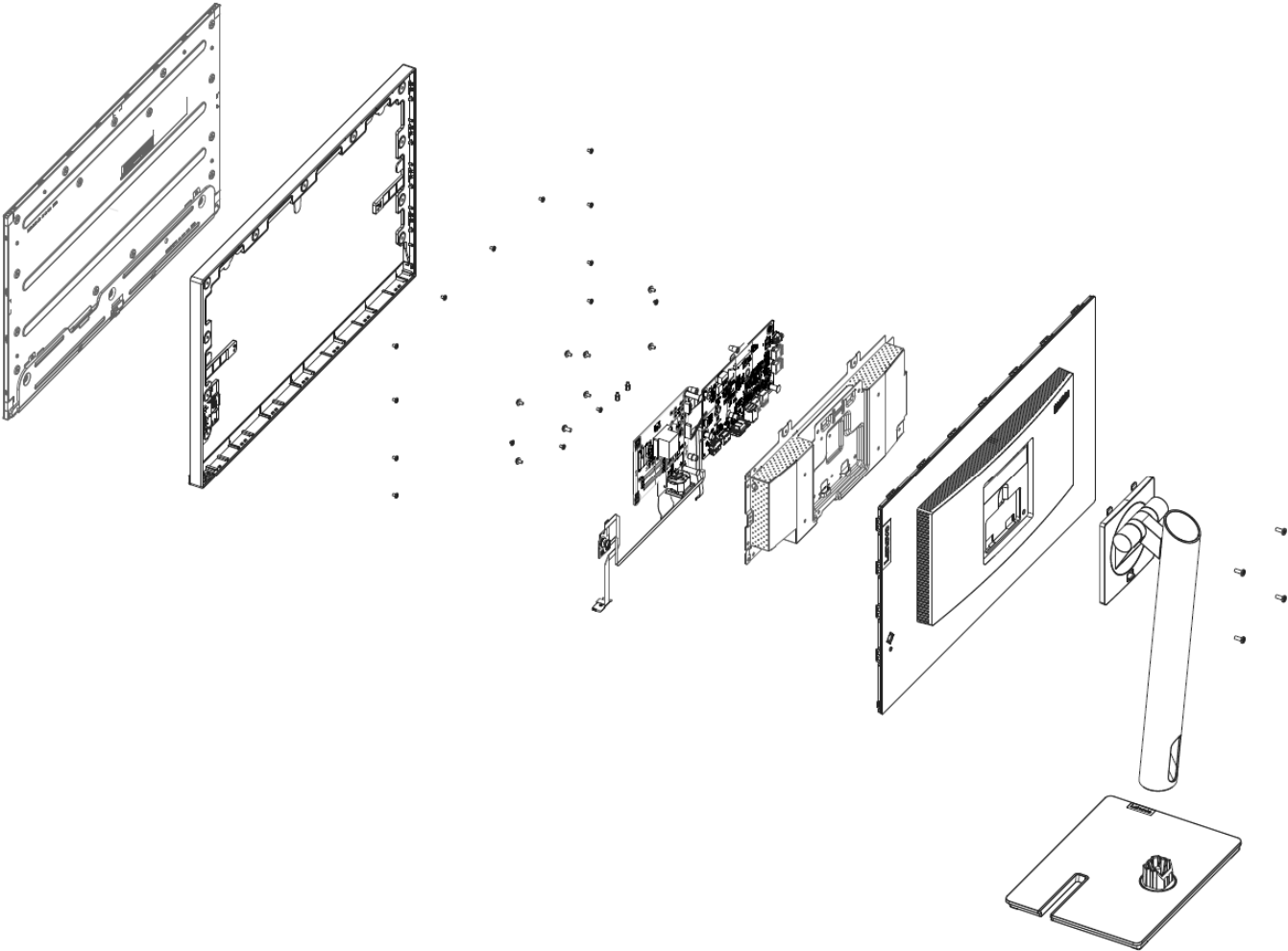


T23i-30 Simplified service manual for dismantling



Model Name: Lenovo T23i-30

Exploded Diagram



1. Precaution

Please read the precaution as follows to prevent any damages to the LCD Monitor.
Make sure all power connector is removed. Be sure that the LCD Monitor is in power off status.

<p>Prepare soft cloth and sponge as working platform to place LCD monitor horizontally.</p>	
<p>Hold LCD by the side carefully and DON'T touch or press panel directly.</p>	

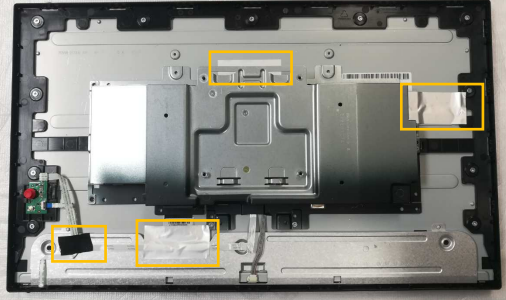
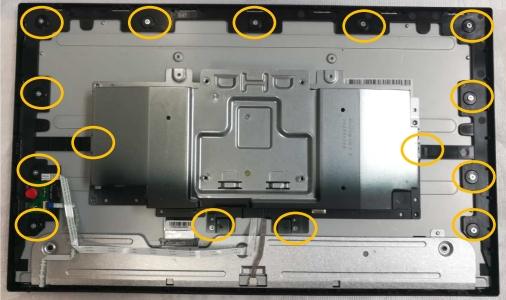
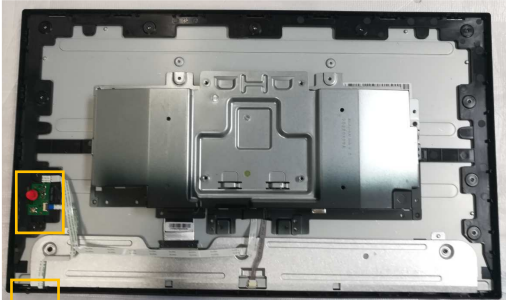
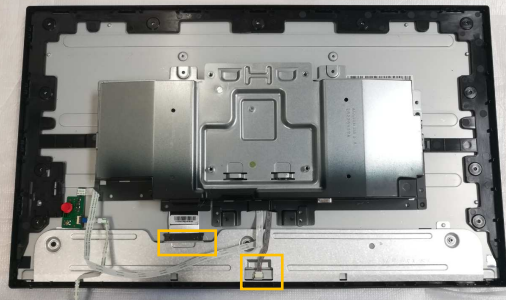

2. Appropriate tools

Select the Appropriate tools for disassembly and re-assembly.

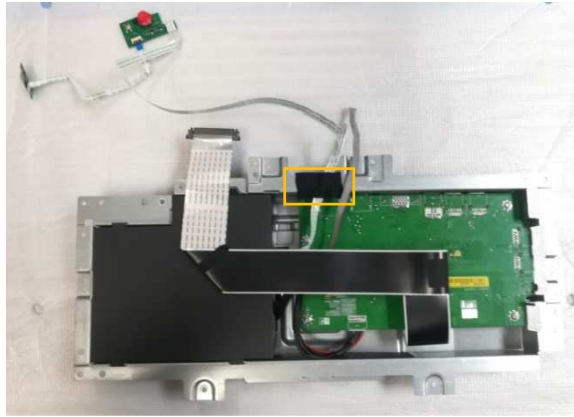
Phillips screwdriver (#2)	
spacer screwdriver	
C/D disassembly tool	
Gloves or soft cloth	

3. Disassembly SOP

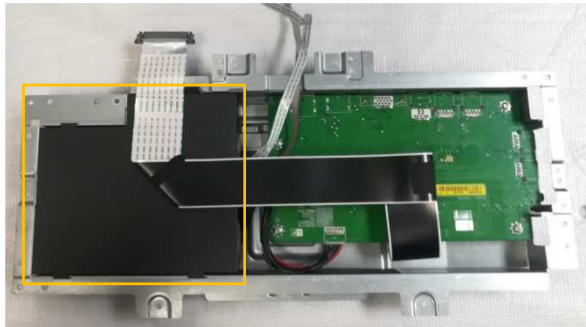
<p>Put the monitor on a flat surface (Put the pe bag under the monitor)</p>	
<p>Push the button to release the stand</p>	
<p>Remove the screw * 4pcs Tool : Screwdriver #2</p>	
<p>Use the C/D disassembly tool to release Rear cover hook from disassemble hole on bottom</p>	

<p>Remove All tape and foil</p>	
<p>Remove the chassis screw. Tool : Screwdriver #2</p>	
<p>Release the power PCB from the middle frame</p> <p>Release the keypad PCB from the middle frame</p>	
<p>Unplug light bar line and LVDS line</p>	
<p>Remove the middle frame</p>	

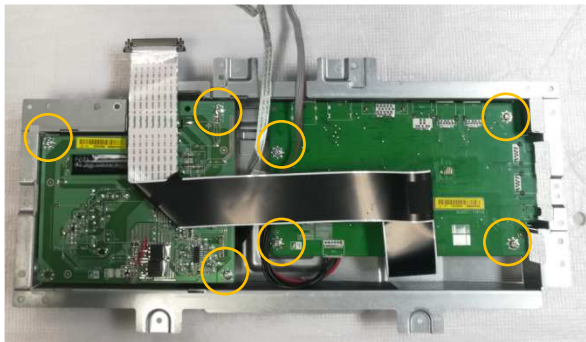
Remove the acetate tape



Take out the mylar sheet from Main chassis



Remove All screw.
Tool : Screwdriver #2



Take out PCB and Peel off all Gasket \ mylar.

