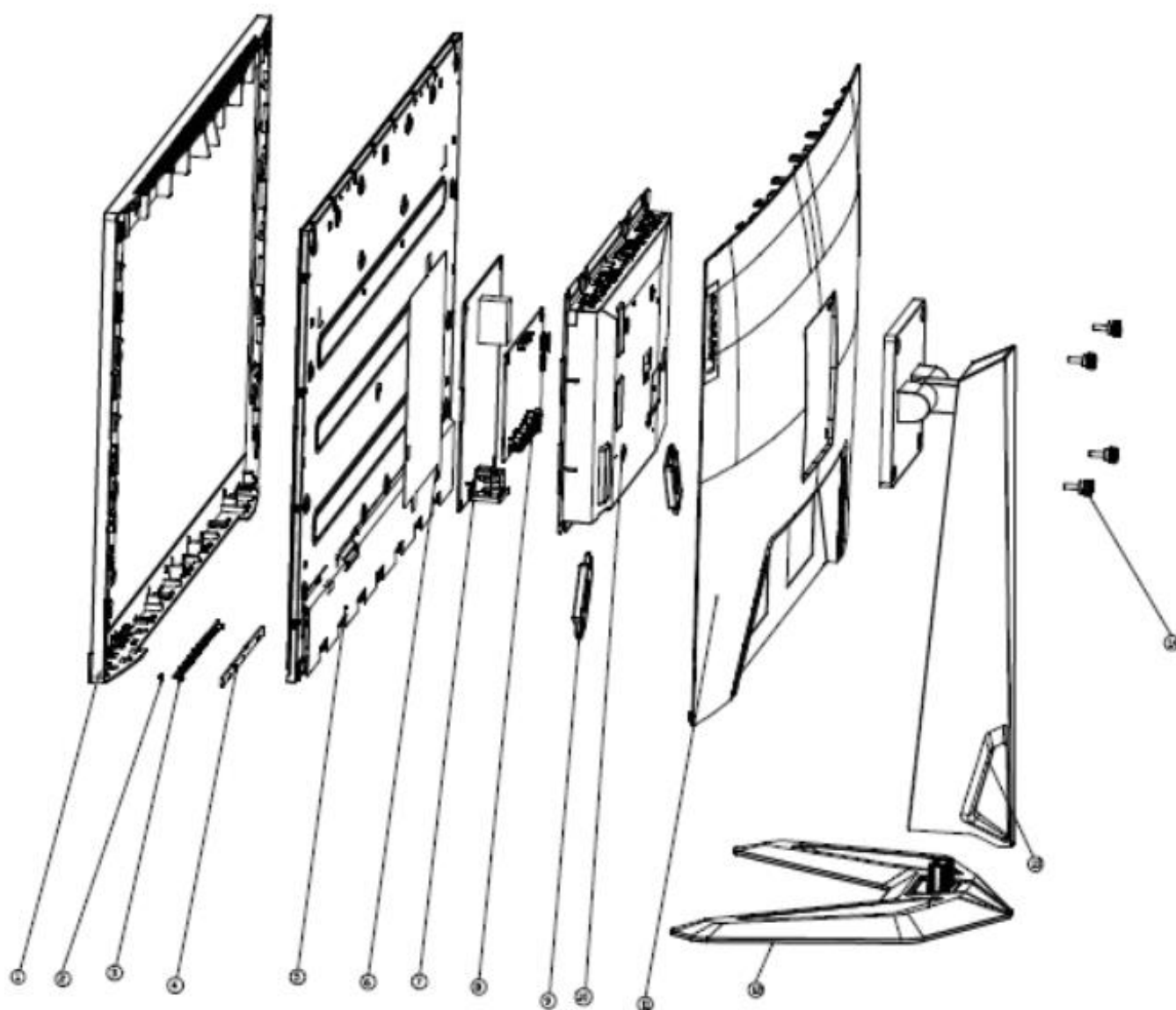


# G27-30&G27-37 Simplified service manual for dismantling

Model Name: Lenovo G27-30&G27-37

## Exploded Diagram



ITEM	PART NO.	PART NAME	Q'ty	Remark
1	742.08.08.0001	MID Cover	1	
2	742.08E03.0001	Lens	1	
3	742.08.08.0001	Function key	1	
4	xxx	Function key BD	1	
5	xxx	Panel	1	
6	740.08.03.0001	POWER Mylar	1	
7	xxx	PowerF BD	1	
8	xxx	IF BD	1	
9	xxx	Speaker	2	
10	760.08.03.0001	CHASSIS ASSY	1	
11	760.08.04.0001	REAR COVER ASSY	1	
12	760.08.07.0001	STAND BASE	1	
13	760.08.06.0001	STAND ARM	1	
14	760.08.09.0001	STAND Screw	4	

## 1. Precaution

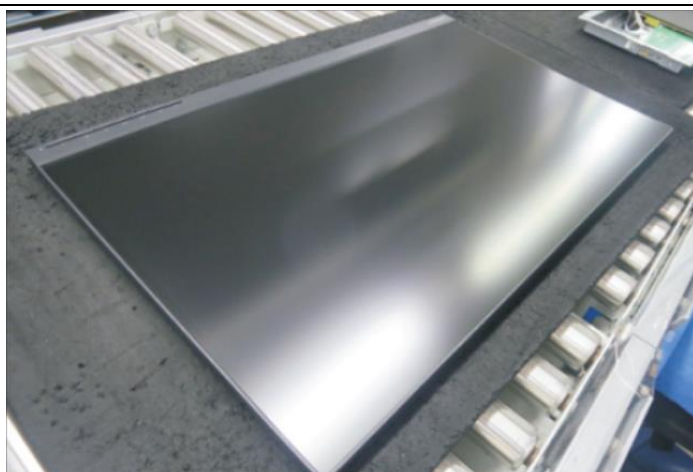
Please read the precaution as follows to prevent any damages to the LCD Monitor.

Make sure all power connector is removed. Be sure that the LCD Monitor is in power off status.

Prepare soft cloth and sponge as working platform to place LCD monitor horizontally.





Hold LCM by the side carefully and DON'T touch or press panel directly.




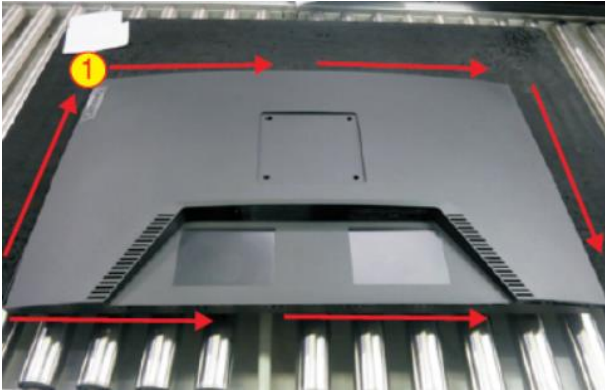


2. Appropriate tools

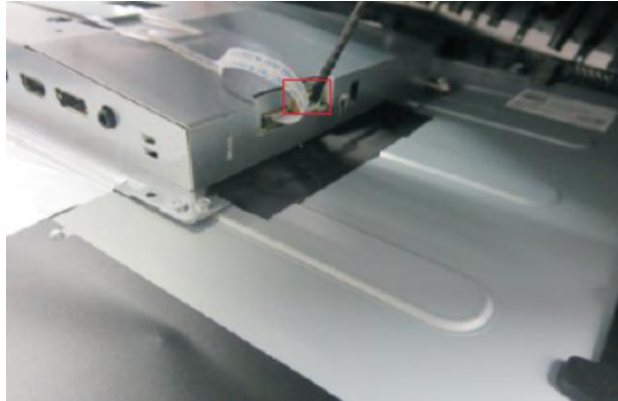
Select the Appropriate tools for disassembly and re-assembly.

Phillips screwdriver (#2)	
Gloves or soft cloth	

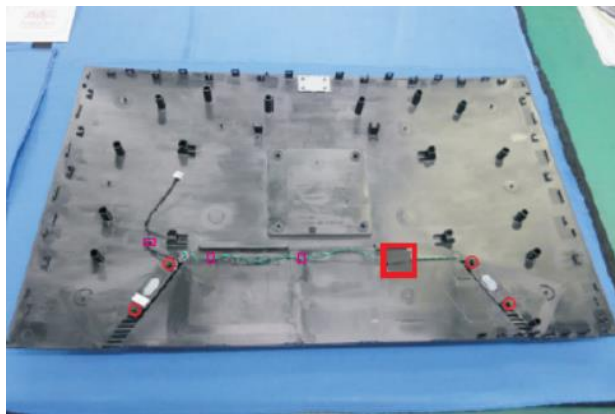
### 3. Disassembly SOP

<p>Put the monitor on a flat surface (Put the EPE on under the monitor)</p>	 A black monitor is shown from the back, resting on a blue surface. The stand is attached to the back of the monitor.
<p>Remove the screw * 4pcs Tool : Screwdriver #2</p>	 The monitor is shown from the back, with four red circles highlighting the screws that are being removed from the stand base.
<p>Lift up stand base and remove</p>	 The monitor is shown from the back, with the stand base being lifted up. A red arrow points to the base of the stand.
<p>Wedge your fingers between the rear cover and the middle bezel on the corners of the top side of the monitor to release the rear cover Tool: Gloves</p>	 The monitor is shown from the back, with red arrows indicating the direction to wedge fingers between the rear cover and the middle bezel on the corners of the top side of the monitor. A yellow circle with the number 1 is in the top left corner.

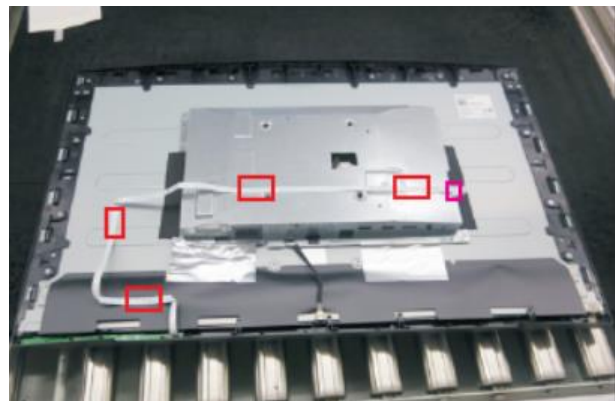
Lift the rear cover up carefully.  
Disconnect the speakers' wire and  
then remove the rear cover



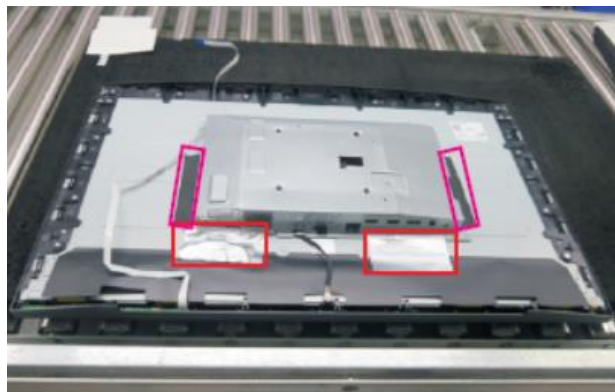
Tear off tape, then release the  
wires and speakers



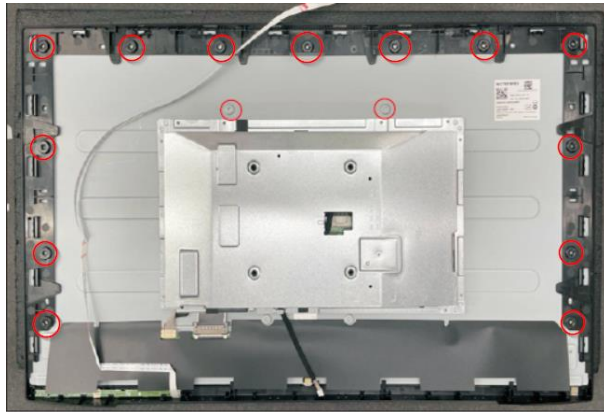
Unplug the panel lamp cable and  
release the lamp cable by tearing  
off tape



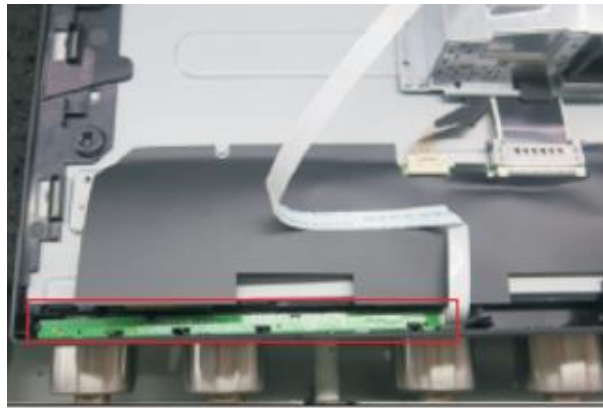
Remove All tape and foil



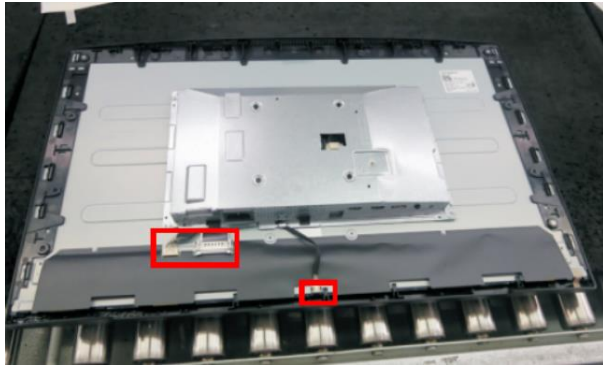
Remove All screw.  
Tool : Screwdriver #2



Release the keypad board from the middle frame



Unplug light bar line and LVDS line

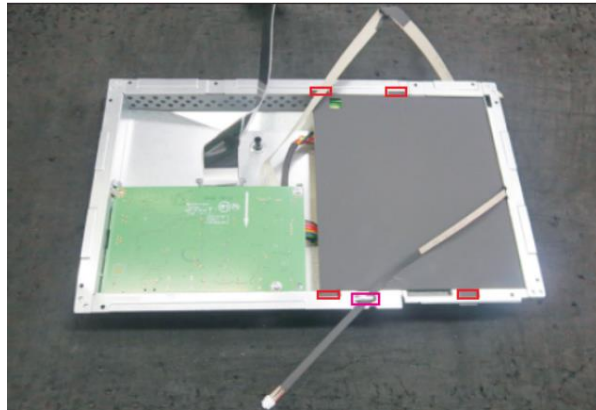


Remove the main chassis, then  
release the middle frame from the  
Panel

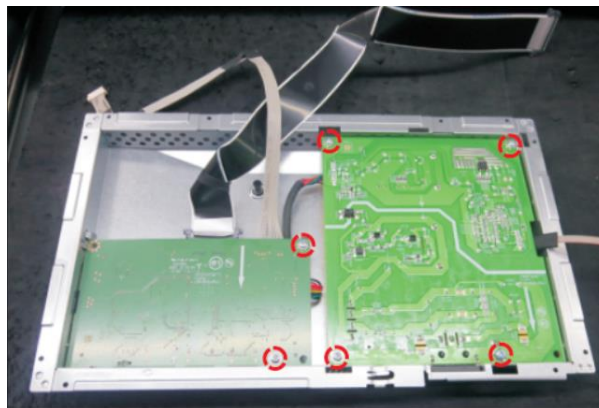




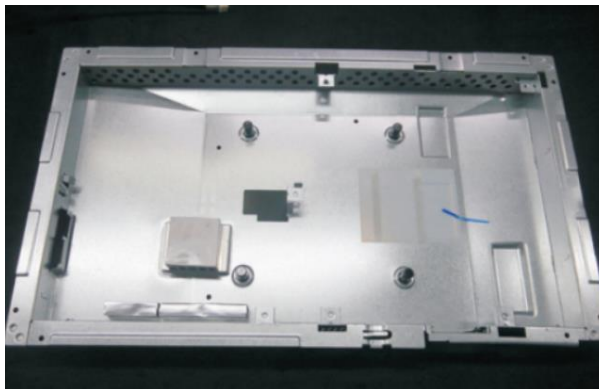
Release the lamp cable from the hook, then take out the mylar sheet from Main chassis



Remove All screw.  
Tool : Screwdriver #2



Take out PCB and Peel off all mylar.



Take out the Thermal pads from Power PCB

