

ICC Profile Installation Guide

Introduction

An ICC profile refers to a set of data that defines how colors are represented and displayed on devices. The default ICC profile on your computer may not best suit your monitor. If you want to make sure to obtain the accurate color matching representation, download and install the optimized ICC profile BenQ provides to work with your monitor.

The ICC profile released by BenQ has been tested as compatible on the Windows and the Mac operating systems. Different procedures may be required to access **Color management** on a Windows Operating System other than Windows 10. Refer to the help document of your operating system for details.



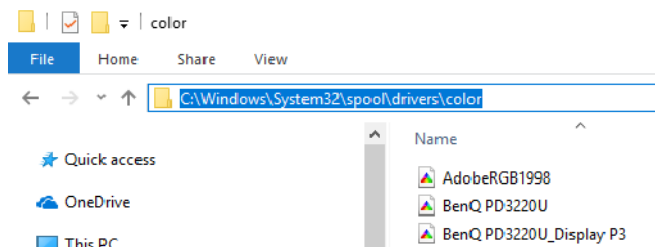
The screenshots in this document are for reference only. For model-specific information or the name of the purchased monitor, refer to the label on the monitor.

Downloading an ICC profile

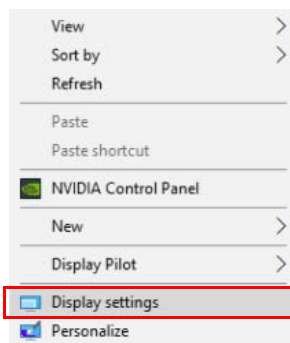
Visit the BenQ local website from www.BenQ.com. Go to the purchased model > the **Downloads** or **Support** tab > the **Software** tab to access the ICC profile. Save the file to your computer appropriately.

Installation on Windows 10

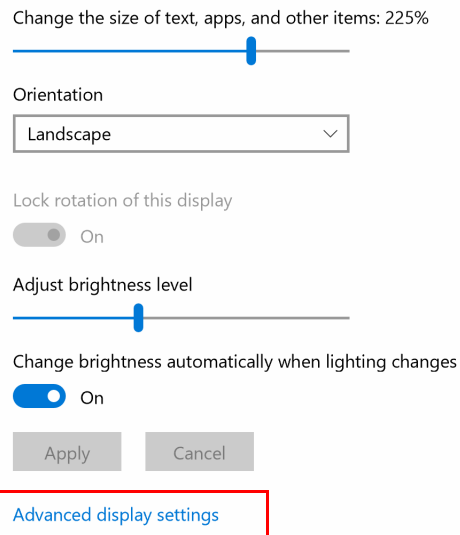
1. Copy the downloaded ICC profile to C:\Windows\System32\spool\drivers\color.



2. Right-click on the desktop and select **Display settings**.



3. Select **Advanced display settings**.



Change the size of text, apps, and other items: 225%

Orientation
Landscape

Lock rotation of this display
 On

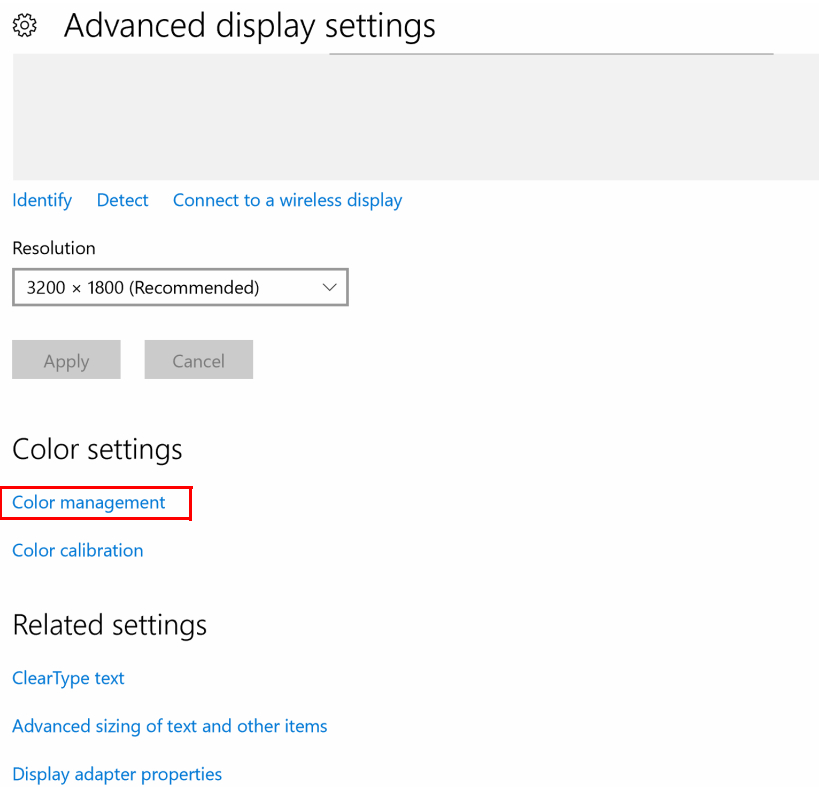
Adjust brightness level

Change brightness automatically when lighting changes
 On

Apply Cancel

[Advanced display settings](#)

4. Select **Color management**.



Advanced display settings

Identify Detect Connect to a wireless display

Resolution
3200 × 1800 (Recommended)

Apply Cancel

Color settings

[Color management](#)

[Color calibration](#)

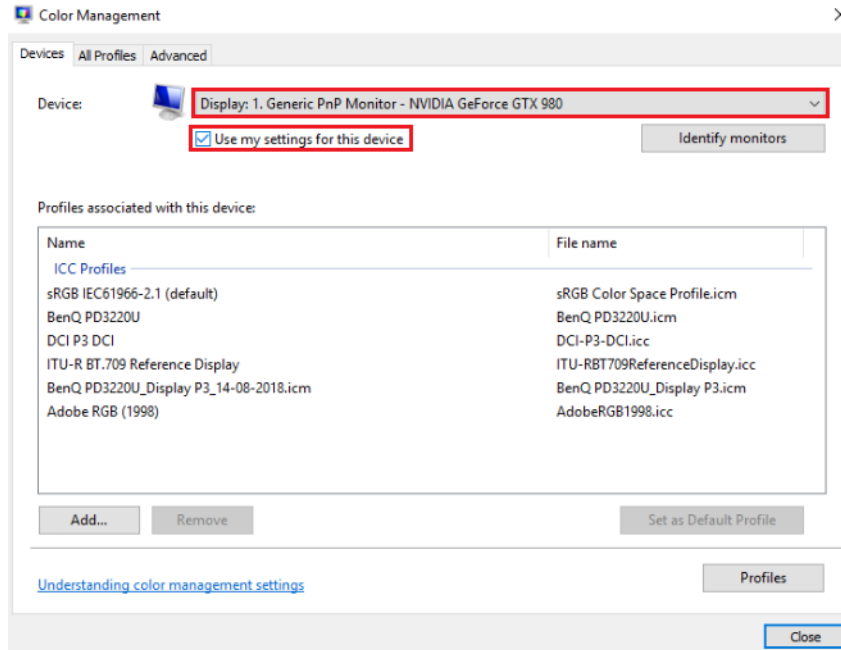
Related settings

[ClearType text](#)

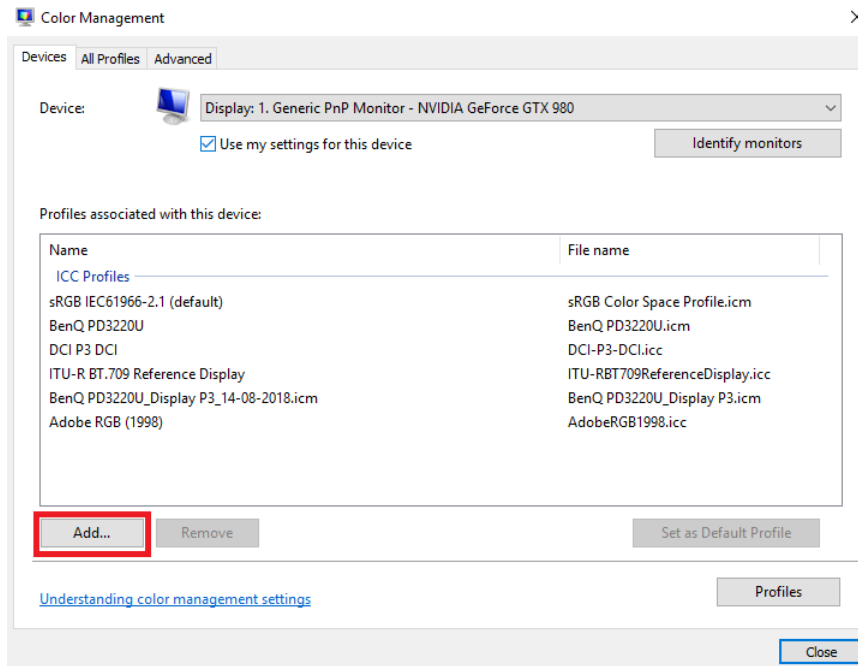
[Advanced sizing of text and other items](#)

[Display adapter properties](#)

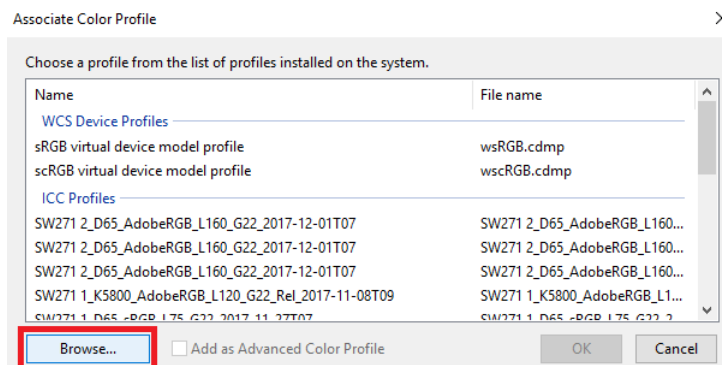
5. On the **Devices** tab, select the device to display and check **Use my settings for this device**.



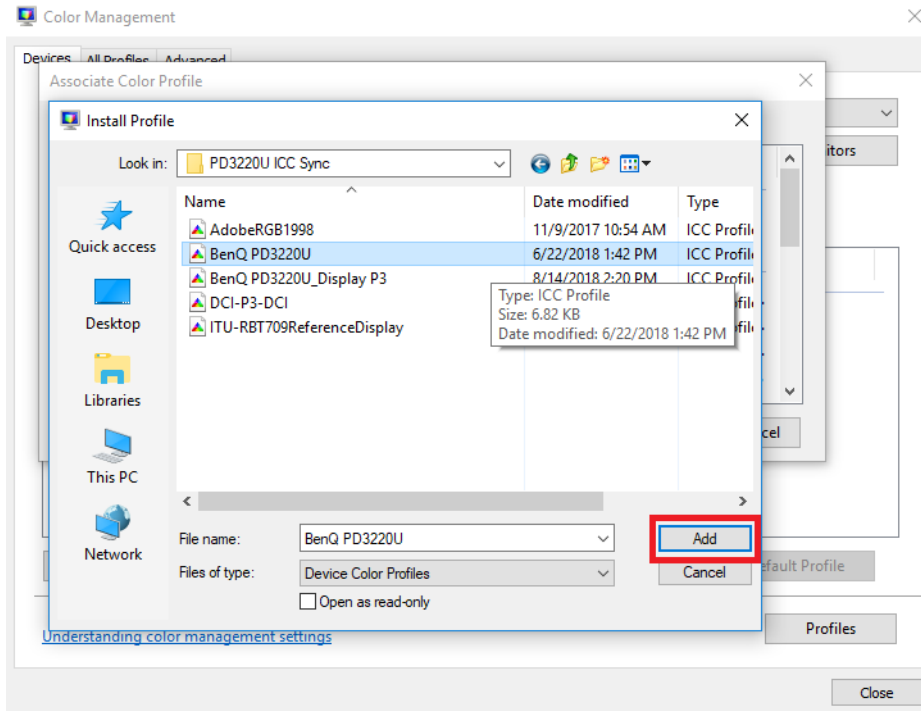
6. Select **Add...**



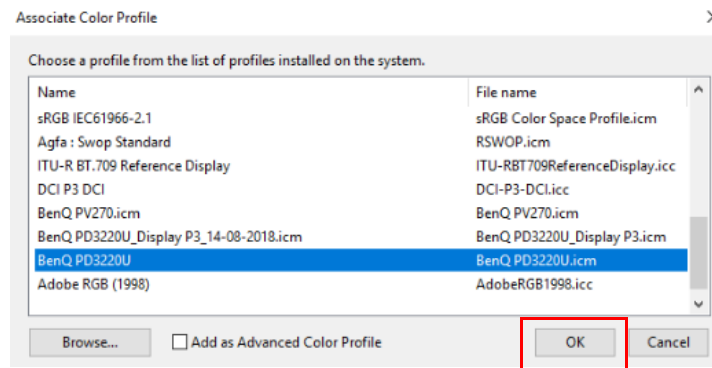
7. Select **Browse...** to look for the ICC profile just downloaded.



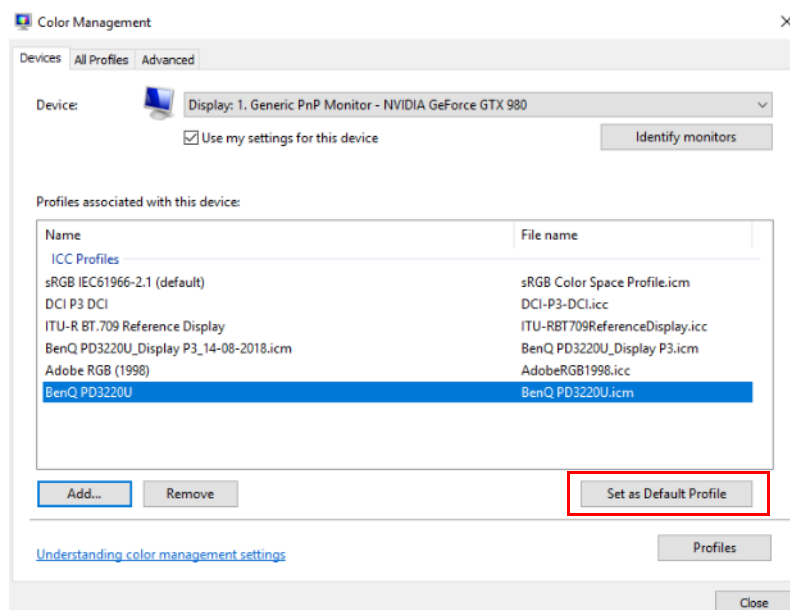
8. Select the downloaded ICC profile and click **Add**.



9. Select the ICC profile you want to apply and click **OK**.

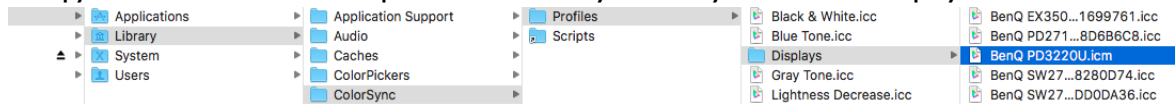


10. The ICC profile is then displayed on the list. Select it and click **Set as Default Profile** to apply.



Installation on Mac

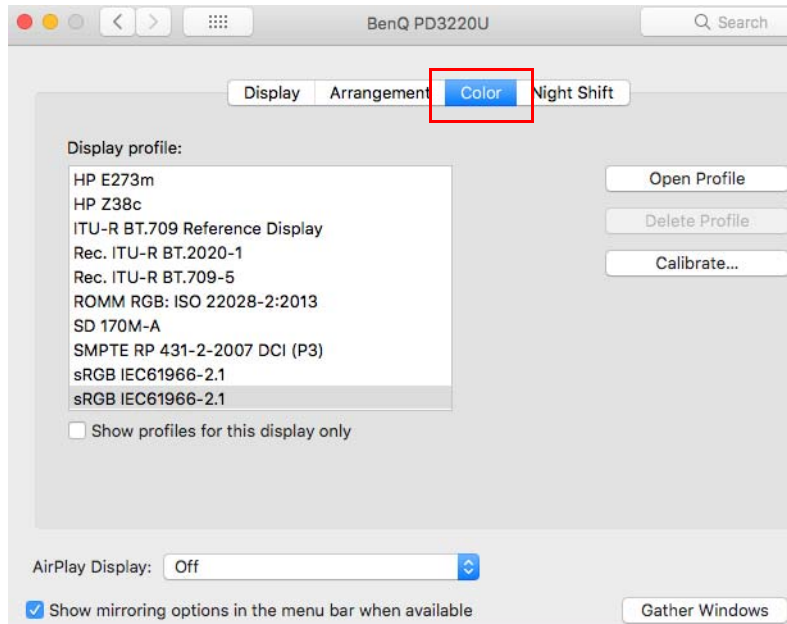
1. Copy the downloaded ICC profile to /Library/ColorSync/Profiles/Displays.



2. Go to **System Preferences > Displays**.



3. Select the **Color** tab.



4. Choose the ICC profile you want to apply.

