



## Product End-of-Life Disassembly Instructions

Product Category: Monitors and Displays
Marketing Name / Model [List multiple models if applicable.]
HP Series 5 Pro 27 inchFHD Monitor – 527pf

**Purpose:** The document is intended for use by end-of-life recyclers or treatment facilities. It provides the basic instructions for the disassembly of HP Inc. products to remove components and materials requiring selective treatment, as defined by EU directive 2012/19/EC, Waste Electrical and Electronic Equipment (WEEE).

NOTE: Recyclers should sort plastic materials into resin streams for recycling based on the ISO 11469 plastic marking code on the plastic part. For any questions on plastic marking or identification of location of parts or components requiring selective treatment, please contact [HP's Sustainability Contact](#).

### 1.0 Items Requiring Selective Treatment

1.1 Items listed below are classified as requiring selective treatment. An "X" in the list of components and parts indicates the product contains the component or part requiring selective treatment

Item Description	Components and parts requiring selective treatments	Quantity of items included in product
Printed Circuit Boards (PCB) or Printed Circuit Assemblies (PCA) with a surface greater than 10 sq cm	<input checked="" type="checkbox"/> Main board (MB) PCB <input type="checkbox"/> Solid state drive (SSD) PCB <input type="checkbox"/> Wireless WAN module (WWAN) PCB <input type="checkbox"/> Touch module PCB <input checked="" type="checkbox"/> Power supply PCB <input type="checkbox"/> External Keyboard (KB) <input type="checkbox"/> External Mouse <input checked="" type="checkbox"/> Others: <u>USB BD , OSD PCB</u>	4
Batteries, excluding Li-Ion batteries. This includes standard alkaline, coin or button style batteries	<input type="checkbox"/> RTC/CMOS battery <input type="checkbox"/> Others: _____	0
Li-Ion batteries. Includes all Li-Ion batteries if more than one is provided with the product (such as a detachable notebook keyboard battery, etc.)	Li-ion battery(ies) are attached to the product by: <input type="checkbox"/> screws <input type="checkbox"/> snaps <input type="checkbox"/> adhesive <input type="checkbox"/> other. Explain _____	0
Mercury-containing components. For example, mercury in lamps, display backlights, scanner lamps, switches, batteries		0

Item Description	Components and parts requiring selective treatments	Quantity of items included in product
Liquid Crystal Displays (LCD) with a surface greater than 100 sq cm. Includes background illuminated displays with gas discharge lamps	<input checked="" type="checkbox"/> Panel LCD	1
Cathode Ray Tubes (CRT)		0
Capacitors / condensers (Containing PCB/PCT)		0
Electrolytic Capacitors / Condensers measuring greater than 2.5 cm in diameter or height	<input checked="" type="checkbox"/> Power Supply capacitor(s) or condenser(s)	1
External electrical cables and cords	<input checked="" type="checkbox"/> AC power cord <input type="checkbox"/> Audio, video or data cables <input checked="" type="checkbox"/> Other: <u>USB Cable, HDMI Cable, DP Cable,</u>	4
Gas Discharge Lamps		0
Plastics containing Brominated Flame Retardants (not including external electrical cables and cords, PCBs or PCAs already listed as a separate item above)		0
Components and parts containing toner and ink, including liquids, semi-liquids (gel/paste) and toner. Include the cartridges, print heads, tubes, vent chambers, and service stations.		0
Components and waste containing asbestos		0
Components, parts and materials containing refractory ceramic fibers		0
Components, parts and materials containing radioactive substances		0
Components containing chlorofluorocarbons (CFC), hydrochlorofluorocarbons (HCFC) or hydrofluorocarbons (HFC), hydrocarbons (HC)		0

## 2.0 Tools Required

List the type and size of the tools that would typically be used to disassemble the product to a point where components and materials requiring selective treatment can be removed.

Tool Description	Tool Size (if applicable)
Screwdriver	Philip #0
Screwdriver	Philip #2
Diagonal Pliers	N/A

## 3.0 Product Disassembly Process

3.1 List the basic steps that should typically be followed to remove components and materials requiring selective treatment including the required steps to remove the external enclosure.

EL-MF877-00

Template Revision **D**

Page 2

last updated May-2022

1. Remove Cable From Display Head
2. Remove Stand Base From Display Head
3. Remove Rear Cover From Display Head
4. Remove EMI, Main chassis & Front Chin From Display Head
5. Remove Mylar, gasket, PCB From Bracket Assembly
6. Remove Speaker and OSD BD From Rear Cover Assy
7. Remove Base, Rubber and Cable Holder From Stand Assy
8. LCM disassembly

3.2 Location of components requiring selective treatment. The photos and/or graphics below identify the location of the parts or components requiring selective treatment within the main unit. For End-of-Life product disassembly instructions of external accessories including external power supply (EPS), external keyboard (KB) external mouse and external cables and cords, refer to the following URL: [End-of-Life Product Disassembly Instructions \(hp.com\)](https://www.hp.com/go/end-of-life)

### 1.Remove Cable From Display Head



1.Remove cable from display head

1

## 2.Remove Stand Base From Display Head



2.1 Push release button



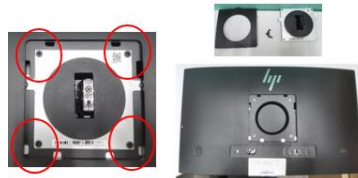
2.2 Remove stand base assembly

2

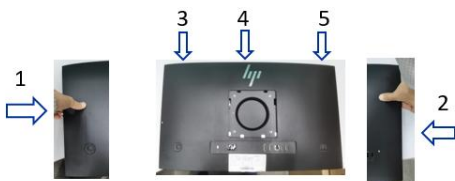
## 3.Remove Rear Cover From Display Head



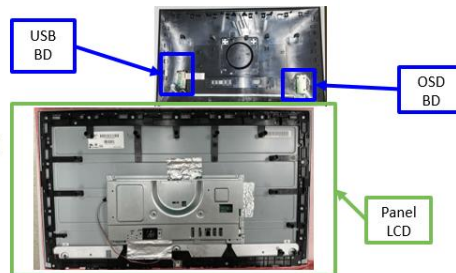
3.1 Remove VESA cover



3.2 Release the hinge screw and remove the hinge



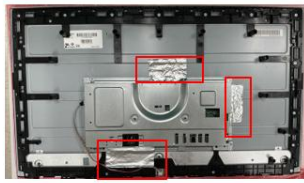
3.3 Pull up rear cover



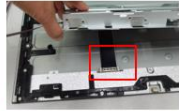
3.4 Remove rear cover

3

#### 4.Remove EMI ,Main chassis Mid frame From Display Head



4.1 Remove EMI and internal cable



4.2 Remove Mid frame screw

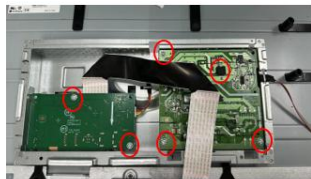


4

#### 5.Remove Mylar, gasket, PCB From Bracket Assembly



5.1 Remove AC screw



5.2 Remove mylar &PCB screw

Condensers measuring greater than 2.5 cm in diameter or height

Power BD

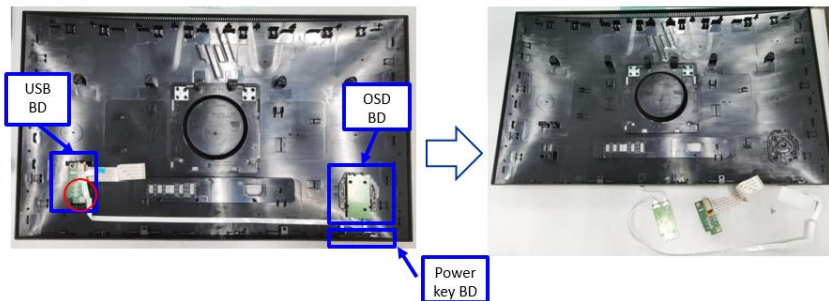
IF BD



5.3 Remove mylar &gasket

5

## 6.Remove USB BD and OSD BD and power key BD From Rear cover Assy



6.1 Release 1 screw

6.2 Remove USB BD and OSD BD and power key BD From Rear cover Assy

6

## 7.Remove Base , rubber and Cable holder From Stand Assy



7.1 Release the base screw



7.2 Remove the base, rubber and cable holder

7

## 8.LCM disassembly



8.1 Remove mylar



8.2 Uncover the PCBA to separate it from the backplane



8

## 8.LCM disassembly



8.2 Uncover the plastic frame to separate the OC



8.3 Use a paper knife to cut the OC and plastic frame foam to separate the plastic frame.

9

## 8.LCM disassembly






8.4 Use a paper knife to cut the OC and plastic frame foam to separate the plastic frame.



8.5 Separate lightbar

10

Disassembly Instructions	 527pf_拆机报告_ Mar_2025.pptx		
AC power cord			
USB Cable			
HDMI Cable			
DP Cable		