

AVer



**STREAM LIVE.
STREAM
FASCINATION.**

AVer PTZ330UV2



Professional PTZ Camera

Amaze your audience with AVer's PTZ330UV2 — the high-end PTZ camera that gives you full control of your streaming content. With 4K 60 fps HDMI/USB/IP outputs, a 30X optical zoom lens, and SmartShoot functionality, this advanced streaming solution is unmatched. Take your streams to the top and make a lasting impression with the PTZ330UV2!



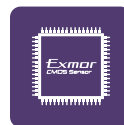
60 fps



4K Ultra HD



30X Optical Zoom



Exmor™ CMOS
Sensor



SmartShoot



IP/HDMI/USB/3G-SDI



Superior Camera
Motion



Intuitive Web UI



Upside-Down
Installation

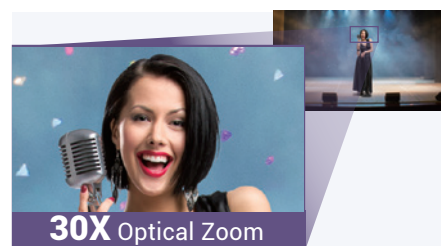


Voice Tracking*

* Voice Tracking requires PTZ Link software.

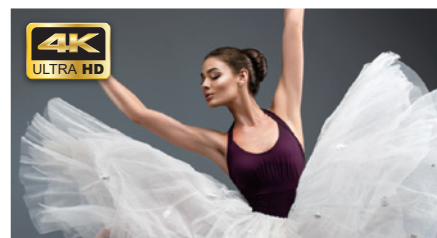
30X Optical Performance: Harness the Power of Zoom

The 30X optical zoom camera and rapid autofocus ensure that every participant appears crystal-clear onscreen. With advanced zoom performance capturing every detail, you'll never miss a moment of any occasion.



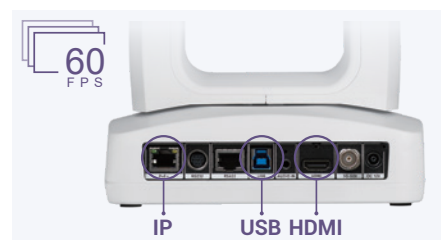
4K Ultra HD: A New Level of Clarity

With its industry-leading Sony sensor and 4K Ultra HD super-high resolution, the PTZ330UV2 takes every streaming experience from ordinary to stunning. And an advanced image processor automatically optimizes the quality of every shot, whether it's a close-up or an extreme long shot.



HDMI/USB/IP + 4K 60 fps: Smoother Streams

NDI® has praised the PTZ330UV2 for its real 4K 60 fps streaming capabilities via HDMI, USB, and IP outputs. With no complicated settings or tangled cords to manage, you can easily use multiple devices at the same time and still get a smoother video streaming experience.



0.1° to 200° Per Second Precision: Pro Camera Control

Customizable movement speed settings, ranging from 0.1° to 200° per second, offer high-level agility and precision for ultimate motion control during streams. The resulting sensitive and smooth multi-angle movement lets you capture extraordinary footage that dazzles your audience.



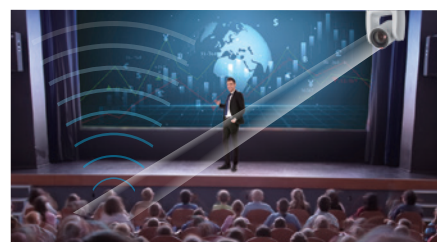
SmartShoot: Keep People and Content in Focus

With embedded SmartShoot, the PTZ330UV2 uses real-time Human Detection to automatically move the camera smoothly between up to 4 preset zones. The camera focuses on the presenter to quickly switch between shooting zones whenever they do, delivering consistently clear images of them and their content.



PTZ Link: Bring Voice Tracking to PTZ Cameras

PTZ Link is the only software that lets you connect PTZ Cameras to microphone systems. With the help of PTZ Link, you can easily turn your AVer PTZ Camera into a voice tracking camera by setting preset areas that let the camera automatically switch focus between different speakers in those spaces. Leverage seamless camera and audio integration with PTZ Link to experience ultimate-quality streams.



Product Specifications

Camera		General	
Image Sensor	1/2.8" 4K Exmor CMOS	Power Requirement	AC 100 - 240V to DC 12V/2A
Effective Picture Elements	8 Megapixels	Power Consumption	19W
Output Resolutions	4K/60, 4K/59.94, 4K/50, 4K/30, 4K/29.97, 4K/25, 1080p/60, 1080p/59.94, 1080p/50, 1080p/30, 1080p/29.97, 1080p/25, 1080i/60, 1080i/59.94, 1080i/50, 720p/60, 720p/59.94, 720p/50	PoE	PoE+
		Dimensions (W x H x D)	180.0 x 192.0 x 145.0 mm
		Net Weight	2.0 (±0.1) kg
		Application	Indoor
Minimum Illumination	0.5 lux (IRE50, F1.6, 30fps)	Tally Lamp	Yes
S/N Ratio	≥ 50 dB	Security	Kensington Slot
Gain	Auto, Manual	Remote Control	Infrared
TV Lines	1400 (Center/Wide)	Operating Conditions	Temperature : 0 °C to +40 °C ; Humidity : 20% to 80%
Shutter Speed	1/1 to 1/32,000 sec		
Exposure Control	Auto, Manual, Priority AE (Shutter, IRIS), BLC, WDR	Storage Conditions	Temperature : -20 °C to +60 °C ; Humidity : 20% to 95%
White Balance	Auto, Manual, ATW, One Push		
Optical Zoom	30X	IP Streaming	
Digital Zoom	1X	Resolution	4K 60fps
Total Zoom	30X	Network Video Compress Formats	H.264, H.265, MJPEG
Viewing Angles	DFOV : 69.2° (Wide) to 2.8° (Tele) HFOV : 62.3° (Wide) to 2.5° (Tele) VFOV : 37.3° (Wide) to 1.4° (Tele)	Maximum Frame Rate	4K 60fps
		Bit-Rate Control Modes	VBR, CBR (selectable)
		Range of Bit-Rate Setting	512 Kbps to 120 Mbps
Focal Length	f = 4.5 mm (Wide) to 135 mm (Tele)	Network Interface	10 / 100 / 1000 Base-T
Aperture (Iris)	F = 1.8 (Wide) to 4.7 (Tele)	Multi-Stream Capability	4 4K 60fps: RTSP, HDMI & USB 1080p 60fps: 3G-SDI
Minimum Working Distance	0.1 m (Wide), 1.2 m (Tele)		
Pan / Tilt Angles	Pan : ±170°, Tilt : +90° / -30°	Network Protocols	IPv4, TCP, UDP, ARP, ICMP, IGMP, HTTP, HTTPS, DHCP, RTP / RTCP, RTSP, RTMP, SRT, HLS, NDI, LLDP, VISCA over IP
Pan / Tilt Speed (Manual)	Pan : 0.1° to 100° / sec, Tilt : 0.1° to 100° / sec		
Preset Speed	Pan : 200° / sec, Tilt : 200° / sec	NDI® HX3	N/A
Preset Positions	10 (IR), 256 (RS-232, RS-422, IP)	USB	
Camera Control - Interfaces	RS-232 (DIN8), RS-422 (RJ45), IP	Connector	USB 3.1
Camera Control - Protocols	VISCA (RS-232 / RS-422 / IP), PELCO-D & PELCO-P (RS-232 / RS-422), CGI (IP)	Video Formats	MJPEG, YUY2
		Maximum Video Resolution	2160p
Image Processing	Noise Reduction (2D / 3D), Flip, Mirror	USB Video Class (UVC)	UVC 1.1
Power Frequencies	50 Hz, 60 Hz	USB Audio Class (UAC)	UAC 1.0
AI Function		Web UI	
Mode	SmartShoot	Live Video Preview	Yes
Audio		Camera PTZ Control	Pan, Tilt, Zoom, Focus, Preset Control
Channels	2ch Stereo	Camera / Image Adjustment	Exposure, White Balance, Picture
Codecs	AAC-LC	Network Configuration	DHCP, IP Address, Gateway, Subnet Mask, DNS
Interface		Software Tools	
Video Outputs	3G-SDI, HDMI, IP, USB	IP Search and Configuration Tool	Support Windows® 7 or later
Audio Outputs	3G-SDI, HDMI, IP, USB	PTZ Management	Support Windows® 7 or later
Audio Inputs	MIC in, Line in	PTZ Control Panel	Supports iOS & iPadOS® 11 or later
Warranty		PTZ Link	Supports Windows® 7 or later, macOS® 10.14 or later
Camera	5 Years	OBS Plugin for PTZ Cameras	Supports Windows® 8 or later, macOS® High Sierra v10.13 or later
Accessories	1 Year		
Package Contents		CaptureShare	Supports Windows® 7 or later, macOS® 10.14 or later
Camera, Drilling Paper, Ceiling Mount Bracket (x2), Quick Start Guide, Cable Fixing Plate, M2 x 4 mm Screw (x3), Power Adapter & Power Cord, 1/4"-20 L=6.5 mm Screw (x2), Remote Control, M3 x 6 mm Screw (x3), DIN 8 to D-Sub 9 Cable, RS-232 In/Out Y Cable, Cable Ties (x4)		Optional Accessories	
		AVer CL01 PTZ Camera Controller, L-Type Wall Mount	

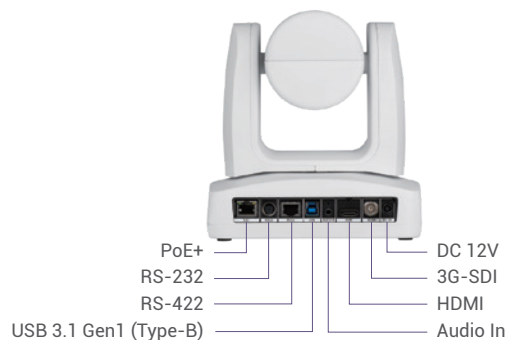
* Specifications may vary depending on location and are subject to change without notice.

Product Appearance

Front & Side



Back



©2023 AVer Information Inc. All rights reserved.
All brand names and logos are trademarks of their respective companies.

www.aver.com



Distributor/Dealer