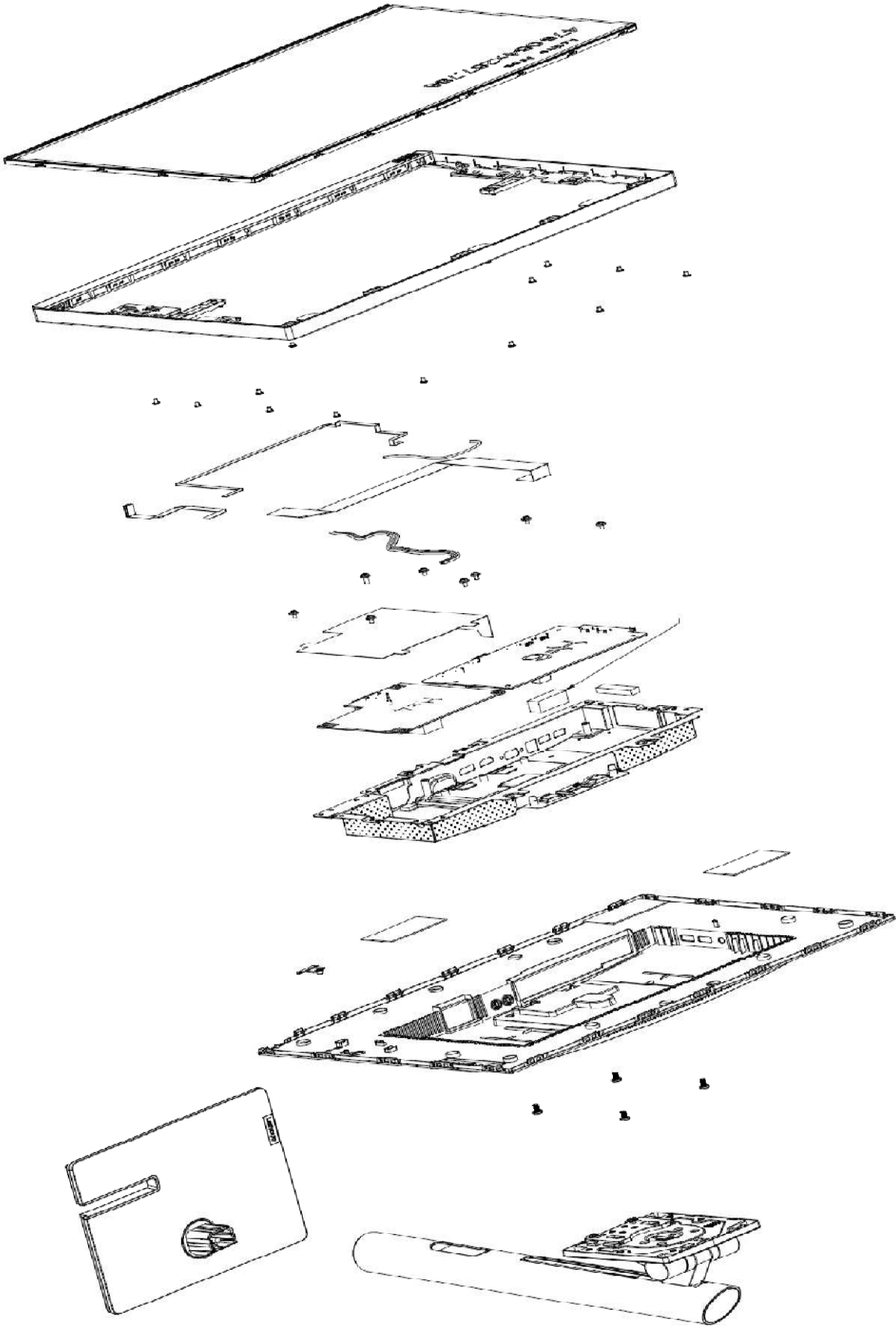


# T22i-30 Simplified service manual for dismantling

Model Name: Lenovo T22i-30



Exploded Diagram



## 1. Precaution




Please read the precaution as follows to prevent any damages to the LCD Monitor.

Make sure all power connector is removed. Be sure that the LCD Monitor is in power off status.

<p>Prepare soft cloth and sponge as working platform to place LCD monitor horizontally.</p>	
<p>Hold LCD by the side carefully and DON'T touch or press panel directly.</p>	




## 2. Appropriate tools

Select the Appropriate tools for disassembly and re-assembly.

<p>Phillips screwdriver (#2)</p>	
<p>spacer screwdriver</p>	
<p>C/D disassembly tool</p>	

<p>Gloves or soft cloth</p>	
-----------------------------	--

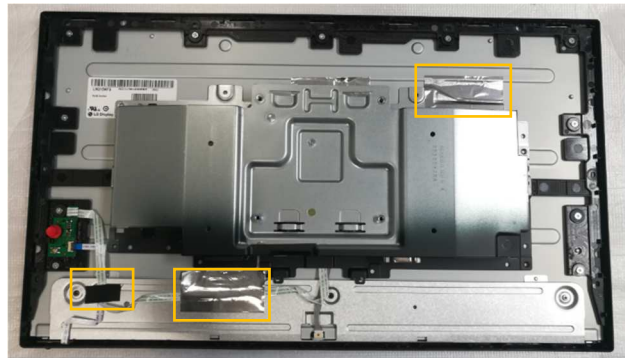
**3. Disassembly SOP**

<p>Put the monitor on a flat surface (Put the pe bag under the monitor)</p>	
<p>Push the button to release the stand</p>	
<p>Remove the screw * 4pcs Tool : Screwdriver #2</p>	

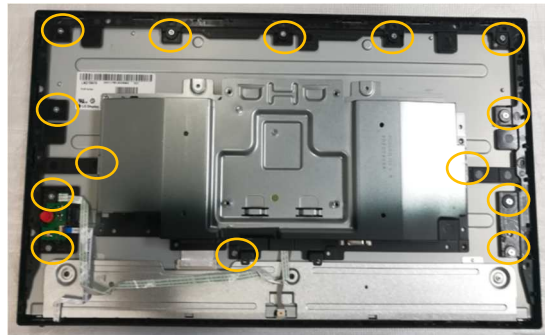
Pull away from the front chin



Remove All tape and foil



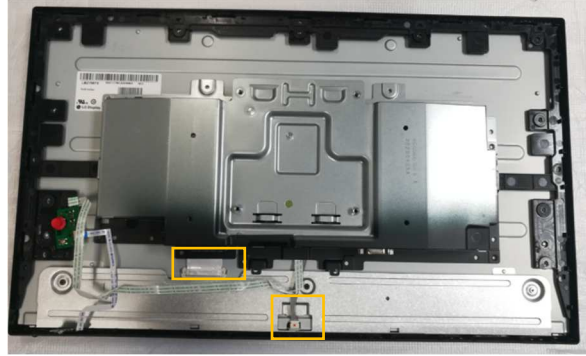
Remove the chassis screw.  
Tool : Screwdriver #2



Release the keypad pcb from the middle frame  
Remove the lens pcb



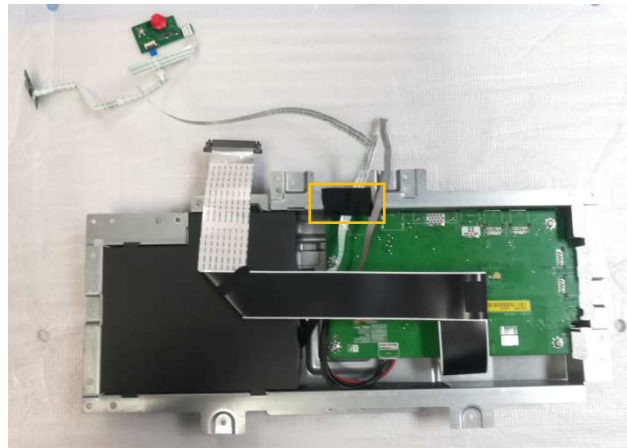
Unplug light bar line and LVDS line



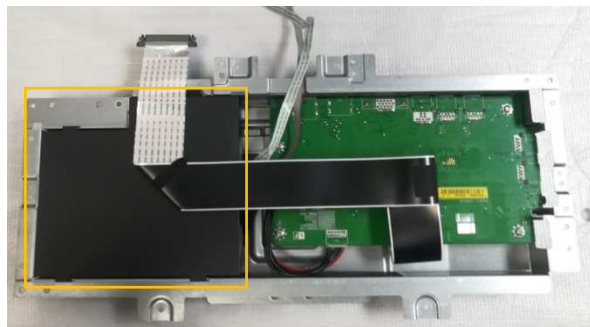
Remove the middle frame



Remove the acetate tape

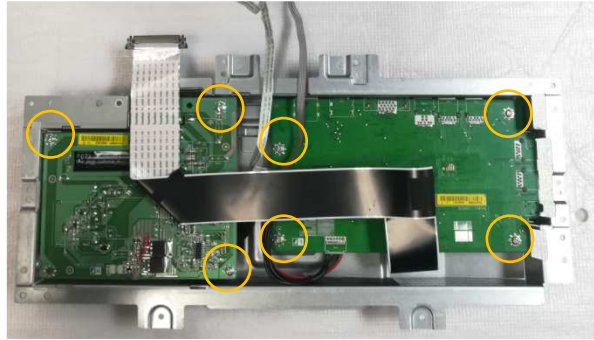


Take out the mylar sheet from Main chassis



Remove All screw.

Tool : Screwdriver #2



Take out PCB and Peel off all  
Gasket \ mylar.

