



INSPIRATION WITHOUT LIMITS

Z BY HP WORKSTATIONS HELP YOU HANDLE MORE, DO
MORE, AND GIVE YOU LIMITLESS CREATIVE POSSIBILITIES.



CONTENTS

- 3 Reliability
- 5 Unique Features
- 7 HP ZBook Mobile Workstations
- 12 Z by HP Desktops
- 16 Commercial VR Solutions
- 20 Professional Displays

RELIABILITY

Designed from the inside out, the Z by HP family was created to deliver high performance and reliability with cutting edge technologies, so you have the confidence you need to get work done.



INDUSTRIAL DESIGN

BOLD & SLEEK

From the bold design of our desktop line, to the sleek industrial styling of our light yet rugged ZBooks, Z by HP combines stunning aesthetics with everyday practicality.

TOOL-FREE CUSTOMIZATION

Easily expand your system with ease as your workflow changes. The Z by HP line features tool-less chassis to make installing more memory, storage, and I/O options a breeze.

PERFORMANCE YOU WON'T HEAR

Uncluttered, modular interior layout maximizes airflow to keep components running at optimum performance, and industry-leading acoustics technology keep systems quiet.



CERTIFIED. SECURE.

THE WORLD'S MOST SECURE

Protect your data and privacy, wherever and whenever you work, with our industry leading security features. HP Sure View¹⁶: Guard your screen from prying eyes with the world's only PCs with integrated privacy screens. HP Sure Start Gen 4¹⁹: Self-healing protection automatically recovers the BIOS and other critical firmware.⁴ System Intrusion Sensor: Get an alert when the side panel of your system has been tampered with, exposing valuable components.¹

[LEARN MORE](#)

TESTING BEYOND INDUSTRY STANDARDS

Desktop Z products are tested to a minimum of 368,000 total test hours in the HP Total Test Process and HP ZBooks are tested to 14 MIL-STD-810G standards. Extreme stress tests such as drop, vibration, temperature, shock, dust and more ensure optimized performance.

CERTIFICATION FOR EVERY INDUSTRY

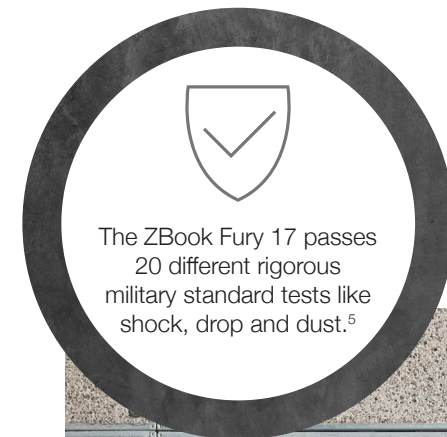
HP works closely with Independent Software Vendors such as Autodesk® and Adobe® to help ensure that the most popular applications are thoroughly tested and certified to work on Z by HP products.

[LEARN MORE](#)

A LONG-TERM INVESTMENT

HP STABLE AND CONSISTENT OFFERINGS

Select your hardware and software components when you customize your HP Z configuration and rest assured that you'll be able to purchase the same configuration throughout the deployment of the product.



UNIQUE FEATURES

Go beyond the basics to
maximize your experience and
make IT management easy.



UNIQUE FEATURES

FOR PROFESSIONAL DESIGNERS AND CREATORS



HP DREAMCOLOR¹⁷ DISPLAYS

Featuring a palette of over one billion colors, you'll get precise color accuracy and consistent color across your entire digital workflow.

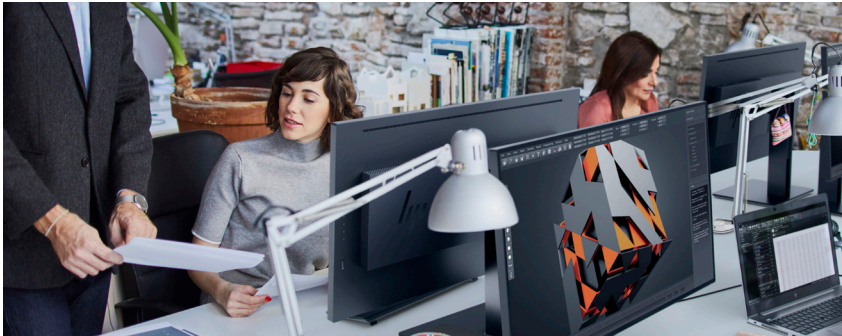
[LEARN MORE](#)



HP Z TURBO DRIVE

Experience ultra-fast storage speeds with the HP Z Turbo Drive G2, an innovative NVMe PCIe-based SSD storage solution that reduces system bottlenecks, boot up, calculation and graphics response times, even with 4K video!

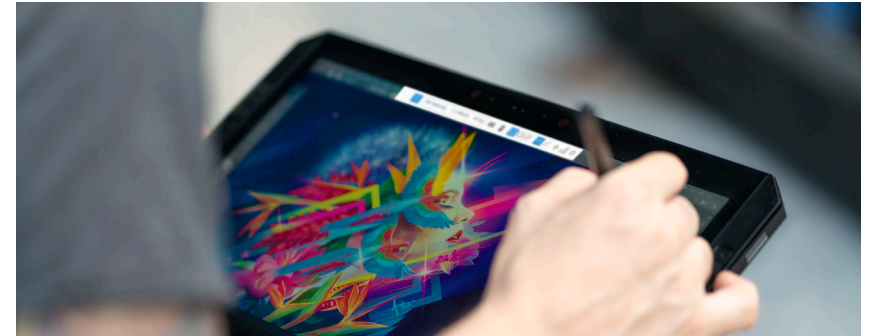
[LEARN MORE](#)



HP PERFORMANCE ADVISOR⁵

A simple, effective way to ensure your Z by HP product is operating at its peak potential, pre-installed Performance Advisor software helps you configure and customize your system for each new application and driver you install.

[LEARN MORE](#)



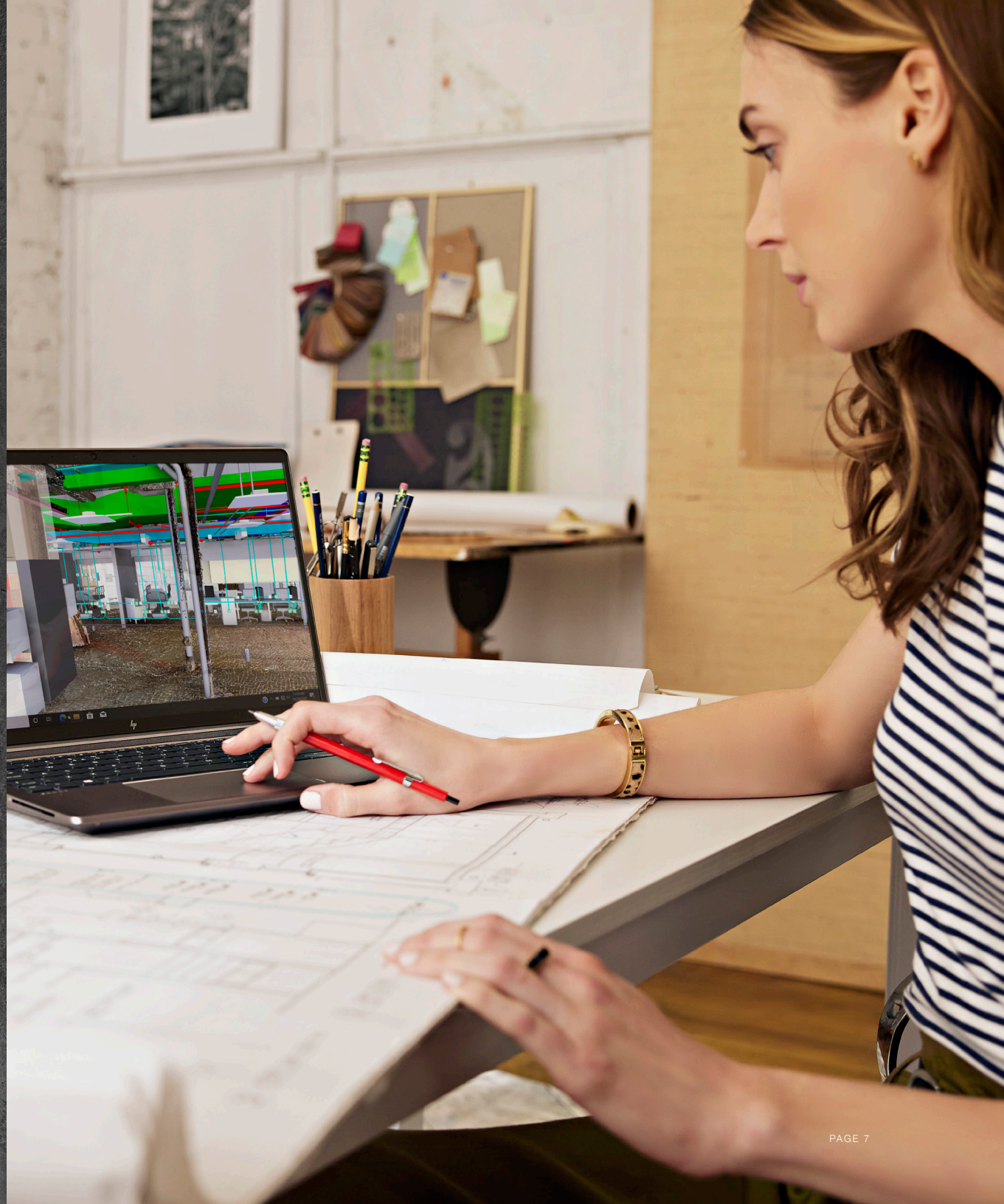
HP REMOTE GRAPHICS SOFTWARE TO ZCENTRAL REMOTE BOOST⁶

Seamless remote access to your Z by HP product. Preloaded on our entire family, HP RGS allows you to collaborate on graphics projects in real time, or work from any location on any PC, Mac, MacBook, Windows Tablet, or Thin Client.

[LEARN MORE](#)

WHEN INSPIRATION STRIKES, THE HP ZBOOK IS THERE.

Select your perfect match of form, function
and features from our broad portfolio.



THIN & LIGHT

HP ZBOOK FIREFLY 14 & 15

Our thinnest, lightest ZBooks ever provide true portability for people who push a standard laptop past its breaking point.

HP ZBOOK FIREFLY 14

OPTIMIZED MOBILITY. At 2.96 lb⁸, you get high performance without the weight. And with the latest connectivity⁷ and security features, you don't have to worry about losing data when you're on the move.

PRO-LEVEL PERFORMANCE⁹. Power through projects with 10th Gen Intel[®] processors. Open big files and run multiple apps for speedy multitasking and productivity.

CAPTIVATING VIEWING EXPERIENCE.

Get a stunning Display HDR certified display with 550 nits of brightness.

HP ZBOOK FIREFLY 15

OPTIMIZED MOBILITY. At less than 3.74 lbs⁸, you get high performance without the weight. And with the latest connectivity⁷ and security features, you don't have to worry about losing data when you're on the move.

PRO-LEVEL PERFORMANCE⁹. Power through projects with 10th Gen Intel[®] processors and industry leading NVIDIA[®] Quadro[®] graphics. Open big files and run multiple apps for speedy multitasking and productivity.

CAPTIVATING VIEWING EXPERIENCE. With a 15 inch diagonal screen, you can work in multiple tabs and windows for maximized productivity. And with a full-size numeric keypad, you can get through data-driven tasks in HP SureView Reflect, you don't have to worry about protecting your data.





POWER TO FREE THE CREATIVE MIND

ZBOOK STUDIO G8

POWER-PACKED FOR THE WORK YOU DO. With up to NVIDIA® RTX™ A5000 or GeForce RTX™ 3080 laptop GPUs² and Intel® Core™ i9 vPro® CPUs^{2,3,4} you can animate in seconds and render or visualize in real time.

A TRANSFORMATIVE VISUAL EXPERIENCE. The HP DreamColor display with 100% DCI-P3 coverage is PANTONE® validated for complete color accuracy. Get smooth motion with a 120 Hz refresh rate for high-speed video and gaming.¹

THIN, LIGHT AND DESIGNED TO PERFORM ANYWHERE. At less than 4lbs,¹ with long-lasting battery life, and built-in noise suppression, this sleek PC is designed so you can work and game from anywhere.

A WORK LAPTOP YOU'LL WANT TO GAME ON . Go ahead—work and game on the same laptop. With a NVIDIA® RTX professional¹ or GeForce RTX GPU,¹ a 120 Hz refresh rate,¹ and an RGB keyboard you'll enjoy fast, smooth gameplay.¹

UNBELIEVABLE VALUE

Upgrade to professional ZBook performance and security at an unbelievably affordable price. Power up your productivity on a durable yet premium design, with pro-grade components including graphics certified for leading software applications.

ZBOOK POWER G8

POWER THROUGH PROFESSIONAL WORKFLOWS.

Blaze through 3D modeling workloads with up to a NVIDIA RTX™ A2000 Laptop GPU, while eliminating slowdowns with up to an Intel® Core™ i9 vPro CPU,^{1,2,3} 64GB RAM and dual 2TB M.2 SSDs.^{3,4}

CERTIFIED, SECURED, AND SUPPORTED. Get peace of mind with a PC that's certified for the professional apps you use. HP Sure Suite security features and optional management tools simplify fleet-wide roll-outs.

DURABLE WITH A PREMIUM TOUCH. With an aluminum chassis and MIL-STD durability,² this PC is premium, but tough enough to last. Project details pop with a four-sided narrow bezel and optional 4K UHD display.³



DESKTOP POWER GOES MOBILE

The desktop-caliber performance of our ultimate ZBook now comes in a sleek, slim design. Seamlessly create, render, and edit with incredible power that's never been so mobile.

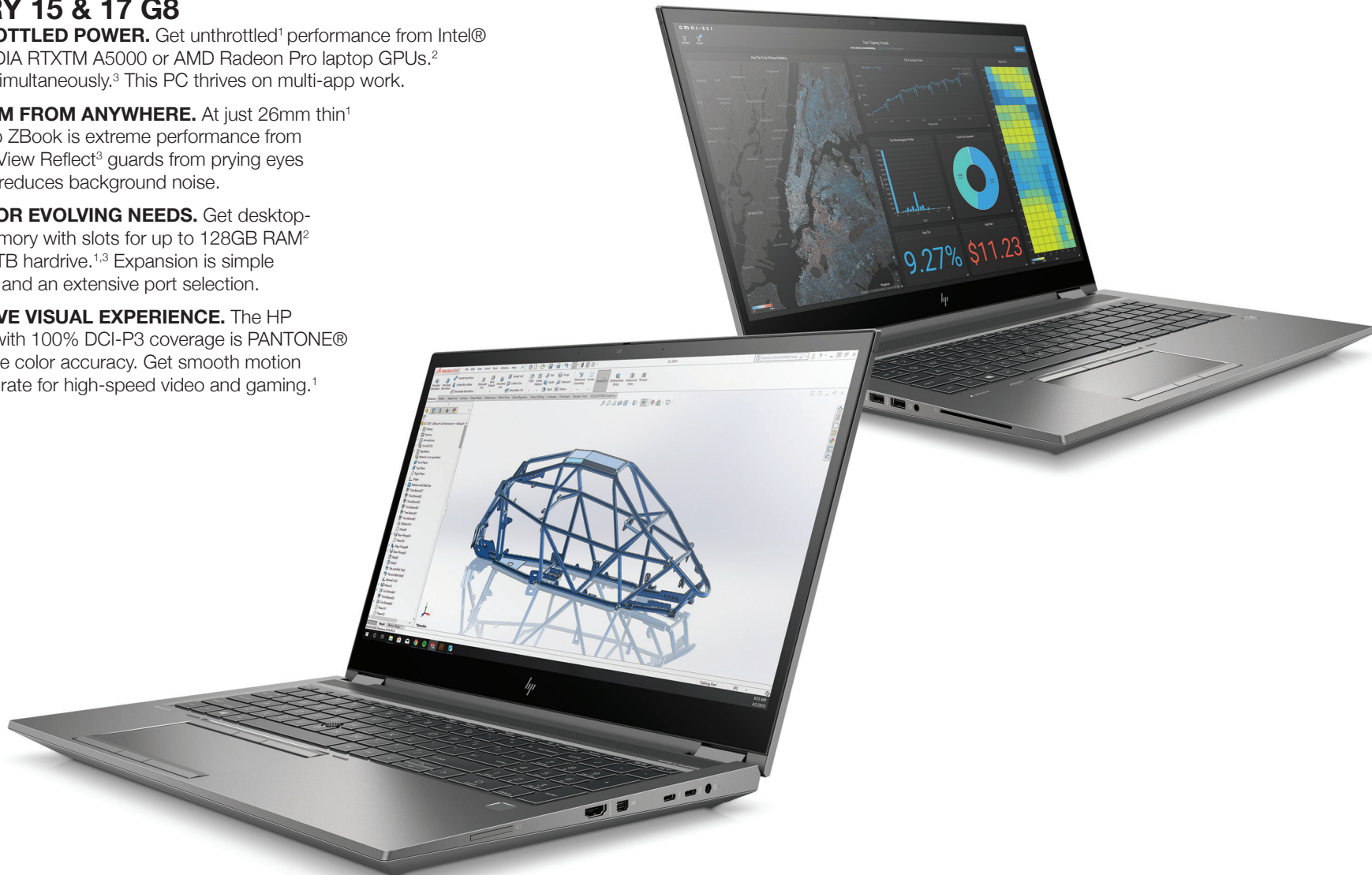
ZBOOK FURY 15 & 17 G8

UNLEASH UNTHROTTLED POWER. Get unthrottled¹ performance from Intel® CPUs and up to NVIDIA RTX™ A5000 or AMD Radeon Pro laptop GPUs.² Work and ray-trace simultaneously.³ This PC thrives on multi-app work.

BUILT TO PERFORM FROM ANYWHERE. At just 26mm thin¹ and 6lbs, our flagship ZBook is extreme performance from anywhere.² HP Sure View Reflect³ guards from prying eyes and built-in software reduces background noise.

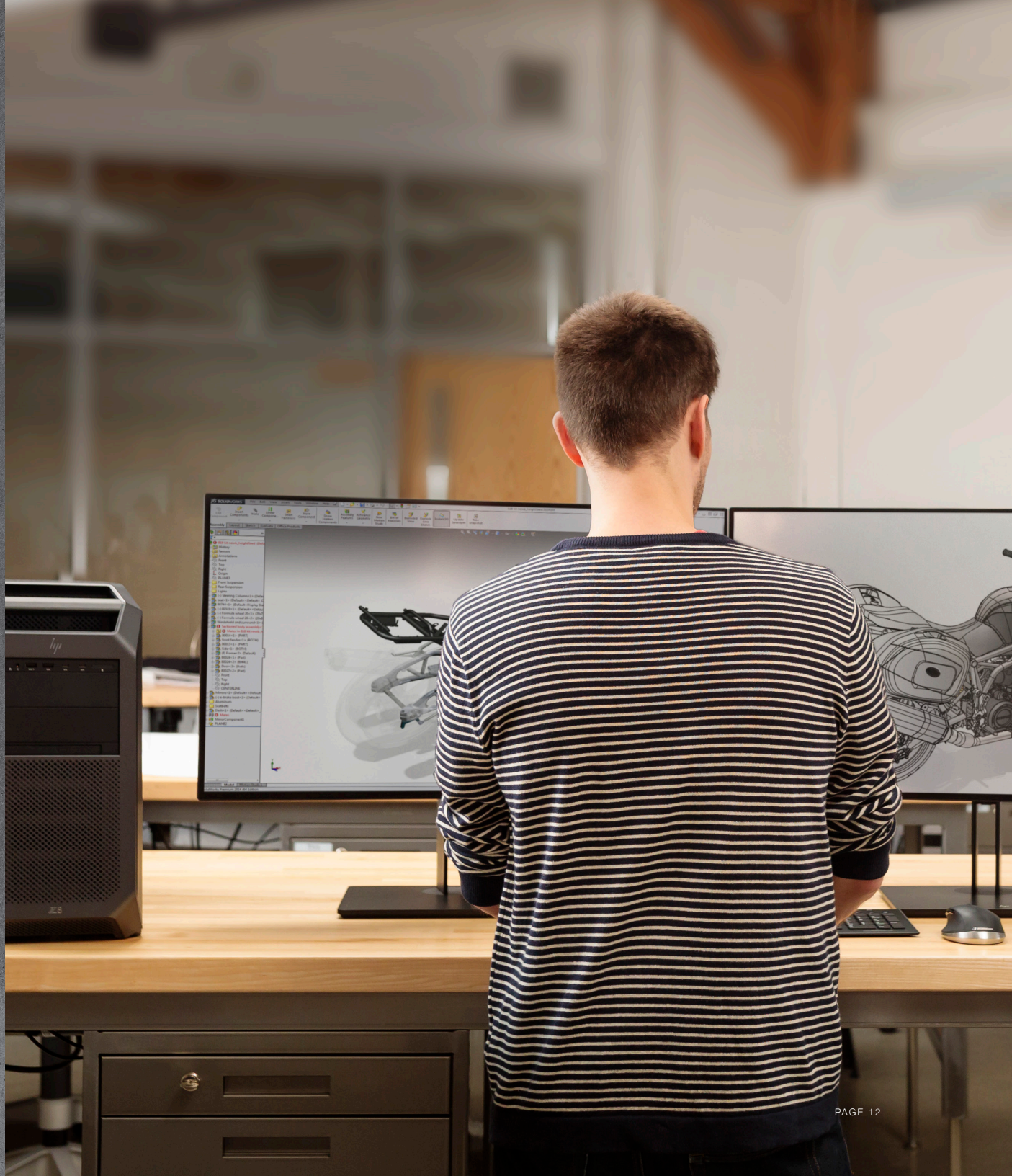
EXPANDABILITY FOR EVOLVING NEEDS. Get desktop-level storage and memory with slots for up to 128GB RAM² and capacity for a 8TB hard drive.^{1,3} Expansion is simple with tool-free access and an extensive port selection.

A TRANSFORMATIVE VISUAL EXPERIENCE. The HP DreamColor display with 100% DCI-P3 coverage is PANTONE® Validated for complete color accuracy. Get smooth motion with a 120Hz refresh rate for high-speed video and gaming.¹



CUT THROUGH YOUR TOUGHEST JOBS WITH OUR Z BY HP DESKTOPS

Built for power-intensive workloads and
customizable to your exact demands.



STEP UP TO OUR MOST AFFORDABLE Z DESKTOP

MORE EXPANDABLE | MORE POWERFUL | MORE SUSTAINABLE

World-class performance within reach. Go beyond a PC. Upgrade to a Z.

HP Z1 TOWER UNCOMPROMISING PERFORMANCE.

Design, edit, or work in VR without constraints with 10th Gen Intel® Core™ processors, NVIDIA® Quadro® or NVIDIA® GeForce® graphics, and more.

CERTIFICATION. Know your desktop is tested and certified for your most critical apps right out of the box.

SECURITY. Enhanced security features such as HP Sure Start Gen 6, HP Sure Run Gen 3, and other HP security suite features¹⁶ come standard on every Z1 Entry Tower.

SUSTAINABLE. Planned to have EPEAT® Gold Certification in multiple countries including the US.



FLEXIBLE ENTRY SOLUTIONS

HP Z2 MINI, HP Z2 SMALL FORM FACTOR, HP Z2 TOWER

HP Z2 TOWER G8

PERFORMANCE.

Unleash the power of pro graphics and an Intel® Xeon® or Core™ processor. With support for PCIe Gen 4 and designed for unthrottled performance, render and visualize projects faster.

EXPANDABLE.

Need to upgrade graphics? Add specialized PCIe cards? With room to expand and tool-less access, you can add components as your needs evolve. This is an investment that will last.

RELIABLE.

Backed by 360K hours of testing, MIL-STD testing,* and software certs, every component is put to the test. And hardened security features come standard—protecting from threats.

HP Z2 SMALL FORM FACTOR G8

PERFORMANCE.

Accelerate workflows with pro graphics and an Intel® Xeon® or Core™ CPU. With support for PCIe Gen 4 and designed for unthrottled performance, render and visualize projects faster.

CUSTOMIZATION.

Build a system matched to your needs with over a million configurations. Customizable I/O ports support new and legacy technologies, dynamic displays and even a second LAN.

ACCESSABLE.

Access the power of your Z2 SFF from anywhere with HP ZCentral Remote Boost.* Get fast responsiveness on demanding projects and collaborate with dispersed teams, even on 3D models.

HP Z2 MINI G5

UNCOMPROMISING PERFORMANCE.

With Intel® 125W 10-core²⁰ Core™ and Xeon® W series processors and NVIDIA® Quadro® 2000 and 3000 class graphics. Our efficient thermals keep it cool and quiet.

VERSATILE.

Create the ideal setup - mount under a desk, behind a display or in a rack.²² Connect to multiple displays and other hardware with plenty of I/O ports.

DISPLAYS.

Drive up to six displays—four native and two additional with daisy chaining.



DISRUPTIVE DESKTOP POWER FOR THE MOST INTENSE WORKFLOWS

HP Z8, Z6 & Z4

Our most powerful offerings deliver reliable performance and extreme power for cutting edge use cases such as machine learning, complex simulations, and VR creation in mind.

HP Z8

PERFORMANCE. With up to a staggering 56 cores²⁰, 3 TB high-speed memory and certification for hardcore apps, you get optimal performance every time.

OPTIMIZED. ML developers GPU-accelerated algorithm development tools with support for the NVIDIA® Deep Learning SDK and many widely used deep learning frameworks.

EXPANDABLE. Strategically placed ducts and fans keep parts cool and quiet, while tool-free access and easy-open latches make upgrading easy.

HP Z6

EXPANDABLE. Invest only in the technology you need now, knowing you can scale up easily over time. With full expansion capability—from processors, to graphics cards, to memory—you create your own upgrade path.

PERFORMANCE. Power through complex design iterations with 48 high-performing cores, advanced pro graphics and a monumental 384 GB of memory.

STORAGE. Install the fastest professional grade storage hardware around, unlocking performance for storage-bound applications without sacrificing standard PCIe slots.

HP Z4

CUSTOMIZABLE. Create a desktop custom built for your workload demands. You're in control with multiple component options, plus more standard features and space to expand than other single-processor Z desktop.

FLEXIBLE. High-frequency processing, multiple cores²⁰ and powerful graphics let you move from single-threaded tasks to multi-threaded tasks.

POWER. Experience disruptive price-performance on multi-threaded applications, or combined workflows with Intel® Core™ X-Series processors.



DESIGNED
FOR HEAVY
WORKLOADS
IN VFX.

8K video editing
in real time with
the HP Z8

CUTTING-EDGE POWER FOR VIRTUAL REALITY

The full potential of VR is brought to life
with HP's powerful, wearable, VR PC.



THE WEARABLE, VERSATILE VR PC

Unlock the potential of VR with a wearable PC optimized for free-roam. From location-based entertainment to training to design, pioneer new experiences using extreme power in a compact wearable.

LEARN MORE

HP VR BACKPACK

GRAPHICS. NVIDIA® GeForce™ graphics paired with Intel® Core™ processors let you fly through VR work. And with ISV-certification for demanding apps like VRED® and Revit®, workflow integration is seamless.

DESIGN. We've optimized the design of our wearable PC for comfort and simplicity. With improved ergonomics, battery management and ease of movement, this is free-roam VR made easy.

FLEXIBILITY. Accelerate VR work. Dock for desktop-quality development. Throw on the backpack for quick reviews and iteration. Host fully immersive end-user experiences. All with one hybrid PC.



THE NEW BENCHMARK IN COMMERCIAL VR.

HP REVERB G2 VR HEADSET & VR READY PRODUCTS

Discover the ultra-light, ultra-immersive headset with double the resolution²⁴ that's changing the game. It's virtual reality as you always imagined it.

HP REVERB G2 VR HEADSET

VISUAL. Harness the full immersive power of VR with new Valve designed audio and lenses offering a staggering 2160x2160 resolution per eye, 114 degrees field of view making it easier to see textures and text more clearly.

DESIGN. More streamlined. More comfortable. More wearable.²⁵ This lightweight HMD offers long-lasting comfort, deep immersion and a natural viewing experience. HP Reverb G2 features include an improved face mask cushion and speakers set 10 mm away from the ears for increased comfort.

COMPATIBILITY. ACCESS ALL OF YOUR VR CONTENT

Windows MR and SteamVR compatibility plus integrated Bluetooth® makes for easy syncing and superb controller tracking.



Z BY HP VR READY PRODUCTS



**HP ZBOOK STUDIO
AND CREATE G7²⁵**



**Performance HP Z Desktop Workstations:
HP Z4/Z6/Z8²⁶**



HP Z38C CURVED DISPLAY

HP OMNICEPT SOLUTION

Bringing together XR hardware, AI, & sensor fusion technologies, our intelligent XR platform captures & interprets the human condition to allow for intelligent & adaptive XR experiences.

WHAT IS HP OMNICEPT?

HP Reverb G2 Omnicept Edition is an intelligent XR headset with:

- Cutting edge sensor technology to capture un-biased biological data
- Advanced sensor fusion to combine this data and package it into actionable information
- And innovative AI technology for analysis and predictive outcomes

HP REVERB G2 OMNICEPT EDITION

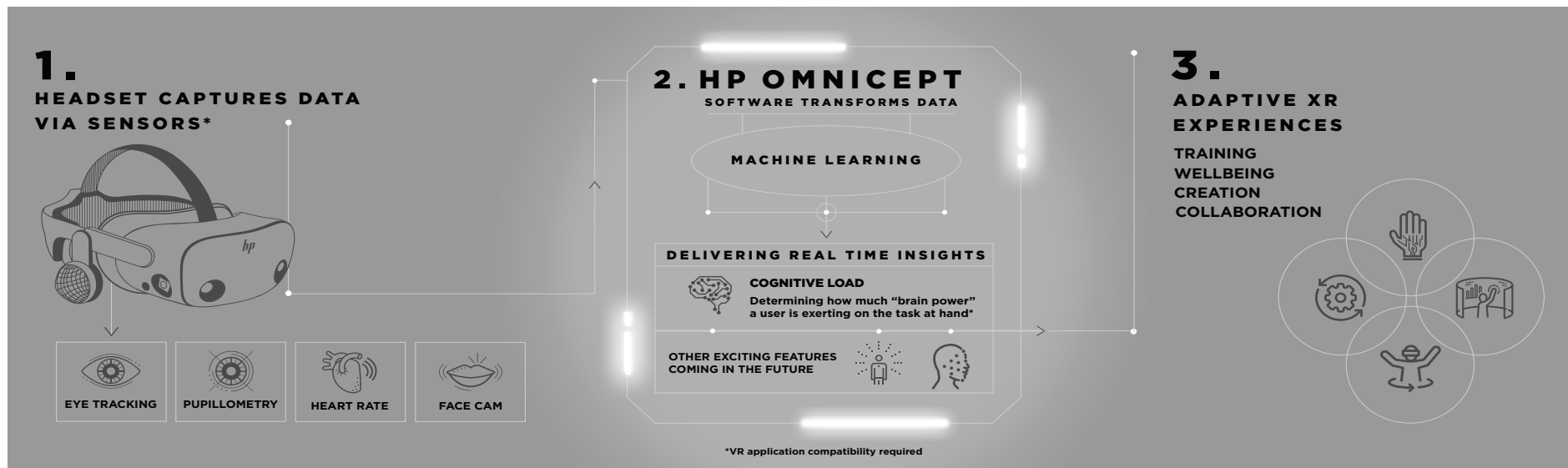
EYE TRACKING. Leverage contextual behaviour with eye tracking and pupillometry sensors built into the HMD and integrated with HP Omnicept.

HEART RATE SENSORS. Understand how a client is reacting to their VR experience, based on their heart rate and adapt the experience to the specific client.

FACE CAMERA. Enjoy real human interactions with the ability to track real-time facial expressions.

HP OMNICEPT SDK

A cognitive inference engine that can be embedded into the XR software platform and is compatible with VR engines like Unity and Unreal which are the leading VR engines used by most developers.



EVERY Z BY HP PRODUCT DESERVES A BRILLIANT DISPLAY

From CAD models to editing photos, work comes alive on HP's highest performance displays that deliver remarkable color across your workflows. Select the size, resolution and connectivity to fit the way you work.¹⁶



REVEAL THE BRILLIANCE OF YOUR WORK



1B

colors with
HP DreamColor
displays

4K DISPLAYS

Experience precise 10-bit color in stunning 4K¹ resolution. Use one powerful USB-C™ connection to get to work fast and de-clutter your workspace.

- HP Z43
- HP Z32
- HP Z27

HP Z DISPLAYS

Be a productive powerhouse on one large screen or multiple-display setups.²³ Choose from a wide selection of factory calibrated displays that deliver reliable color consistency and versatile connectivity options ranging from VGA to USB-C™.

- HP Z4nf
- HP Z23n
- HP Z22n

HP DREAMCOLOR DISPLAYS

Captivate your audience with bright, rich colors and intense shadow detail. Our extensive color spectrum offers over one billion colors with DCI P3 and Adobe RGB coverage for exceptionally smooth transitions.

- HP Z27x G2
- HP Z31x
- HP Z24x



LEARN MORE, VISIT OUR WEBSITE

HP.COM/Z

ENDNOTES

- ¹ Based on HP's unique and comprehensive security capabilities at no additional cost among desktop and mobile workstation vendors as of July 2018 on HP Desktop Workstations and as of January 2017 on Mobile Workstations with 7th Gen and higher Intel® Processors.
- ² Up to 128 GB memory is an optional, configurable feature.
- ³ Based on currently available, in-market mobile workstations, as of January 25, 2018 having physically embedded, hardware-based privacy screen. Available on select HP Mobile Workstations only.
- ⁴ 41% total performance increase based on Cinebench test (multi-threaded apps) comparing Intel® Core™ i9-9900K on newly designed motherboard to Intel® Core™ i7-8700K.
- ⁵ HP Performance advisor require internet access.
- ⁶ HP Remote Graphics software require internet access.
- ⁷ Wireless access point and internet service required and sold separately. Availability of public wireless access points limited. Wi-Fi 6 is backwards compatible with prior 802.11 specs. The specifications for Wi-Fi 6 (802.11ax) are draft and are not final. If the final specifications differ from the draft specifications, it may affect the ability of the notebook to communicate with other 802.11ax devices.
- ⁸ Weight will vary by configuration.
- ⁹ Represents performance change on applications that utilize the graphics performance generation over generation moving from 2 GB of VRAM to 4GB of VRAM.
- ¹⁰ 4K UHD 3840 x 2160 resolution display is an optional feature and requires configuration at purchase.
- ¹¹ Touch display is an optional feature and requires configuration at purchase.
- ¹² NVIDIA® Quadro® P2000 graphics is a configurable option.
- ¹³ Ambient light sensor only available on select models with standard and full UHD (not available with HP DreamColor or HP Sure View display models).
- ¹⁴ Wacom AES pen optional and only available with certain configurations.
- ¹⁵ 128 GB RAM planned to be available in December 2018
- ¹⁶ HP Sure View integrated privacy screen is an optional feature that must be configured at purchase and functions in landscape orientation. Planned to be available in October 2019.
- ¹⁷ DreamColor display required for 1 billion colors and is an optional or add on feature.
- ¹⁸ Requires Windows and Intel® or AMD 7th or 8th generation processors.
- ¹⁹ HP Sure Start Gen4 is available on HP Elite and HP Workstation products equipped with 8th generation Intel® or AMD processors.
- ²⁰ Multicore is designed to improve performance of certain software products. Not all customers or software applications will necessarily benefit from use of this technology. Performance and clock will vary depending on application workload and your hardware and software configurations. Intel's numbering, branding and/or naming is not a measurement of higher performance.
- ²¹ 33% total performance increase based on Cinebench test (multi-threaded apps) comparing Intel® Core™ i9-9900K to Intel® Core™ i7-8700K.
- ²² Mounting hardware sold separately.
- ²³ 6 display solution is achieved using a combination of Intel® HD graphics and NVIDIA® Quadro® graphics and is ONLY supported on Windows 10.
- ²⁴ Must be configured with HP approved VR Ready graphics and CPUs.
- ²⁵ See product QuickSpecs for exact specifications.