

# Wired Content Sharing

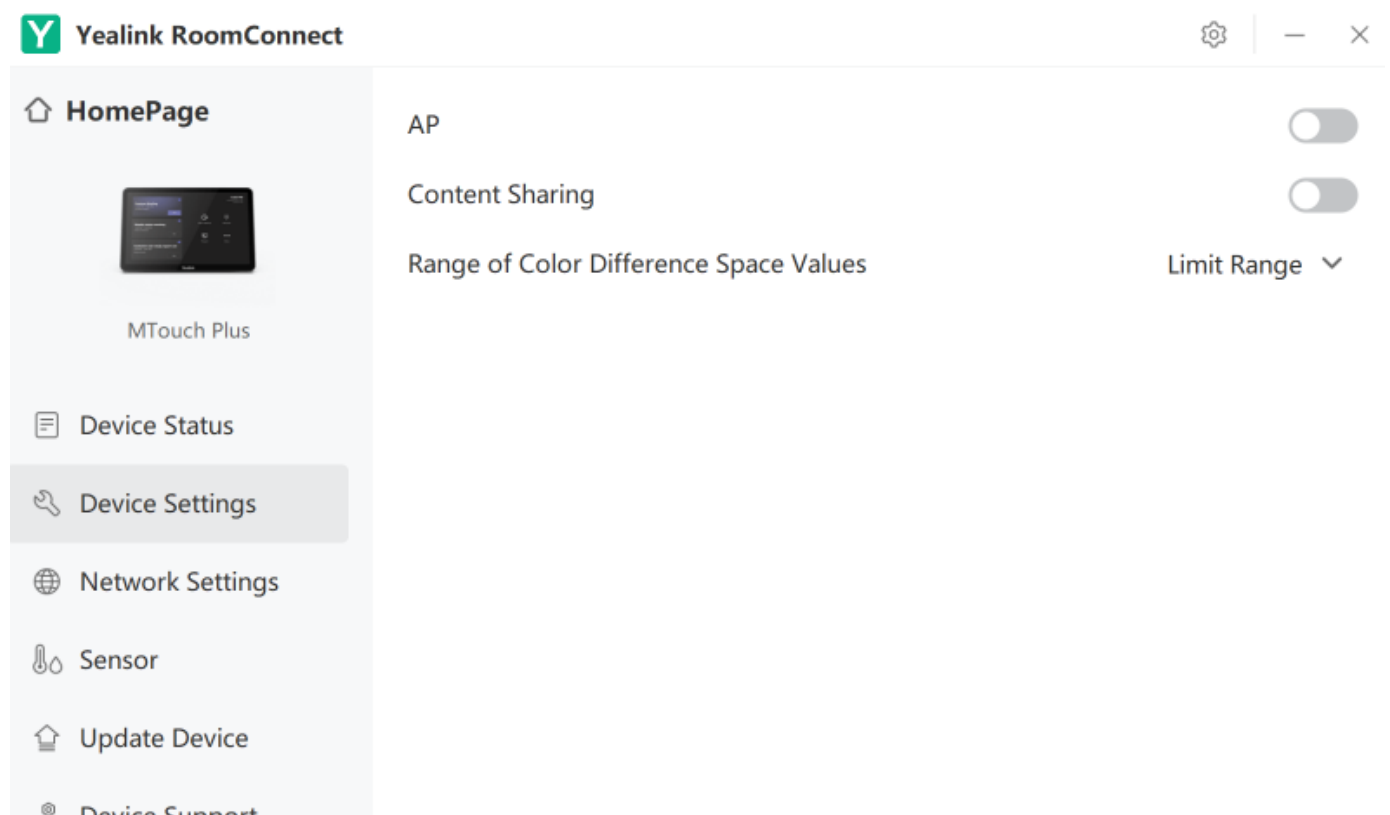
## Via Yealink Screen Sharing Box

### Introduction

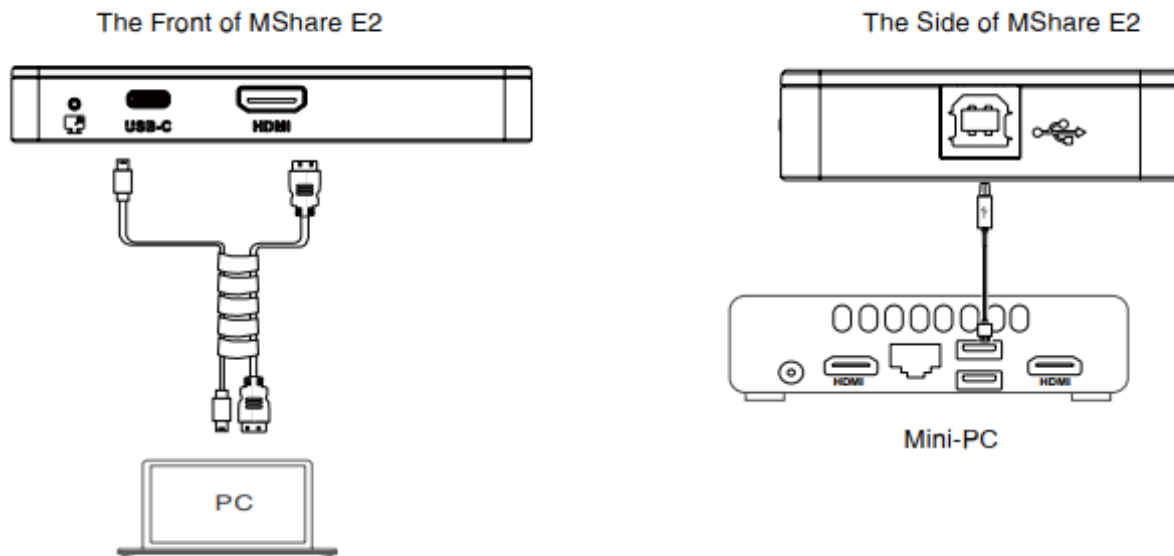
You can use Yealink Screen Sharing Box to share content.

### Connect Yealink Screen Sharing Box to PC

1. In the Windows mode, open Yealink RoomConnect.
2. Select Yealink MTouch Touch Panel, tap **Device Settings**, and turn off **Content Sharing**.



3. Switch the system to Teams mode.
4. Connect the USB-B port of Yealink Screen Sharing Box to the USB-A port of Yealink mini-PC using a USB cable.
5. Connect the USB-C or HDMI port of Yealink Screen Sharing Box to your PC using HDMI and USB-C cable.



## Share Audio

The wired sharing transmits all system audio output from your device. For example, if you have application audio notifications enabled during content sharing, participants will hear these notification sounds along with the audio.

The system automatically mutes your local audio when you start sharing content to avoid audio interference. When you stop sharing content, the system restores your local audio to its initial status.

## Stop Sharing

Do one of the following:

- Disconnect the cable from the PC.
- In the Microsoft Teams mode, tap **Stop Sharing** on your Yealink MTouch Touch Panel.

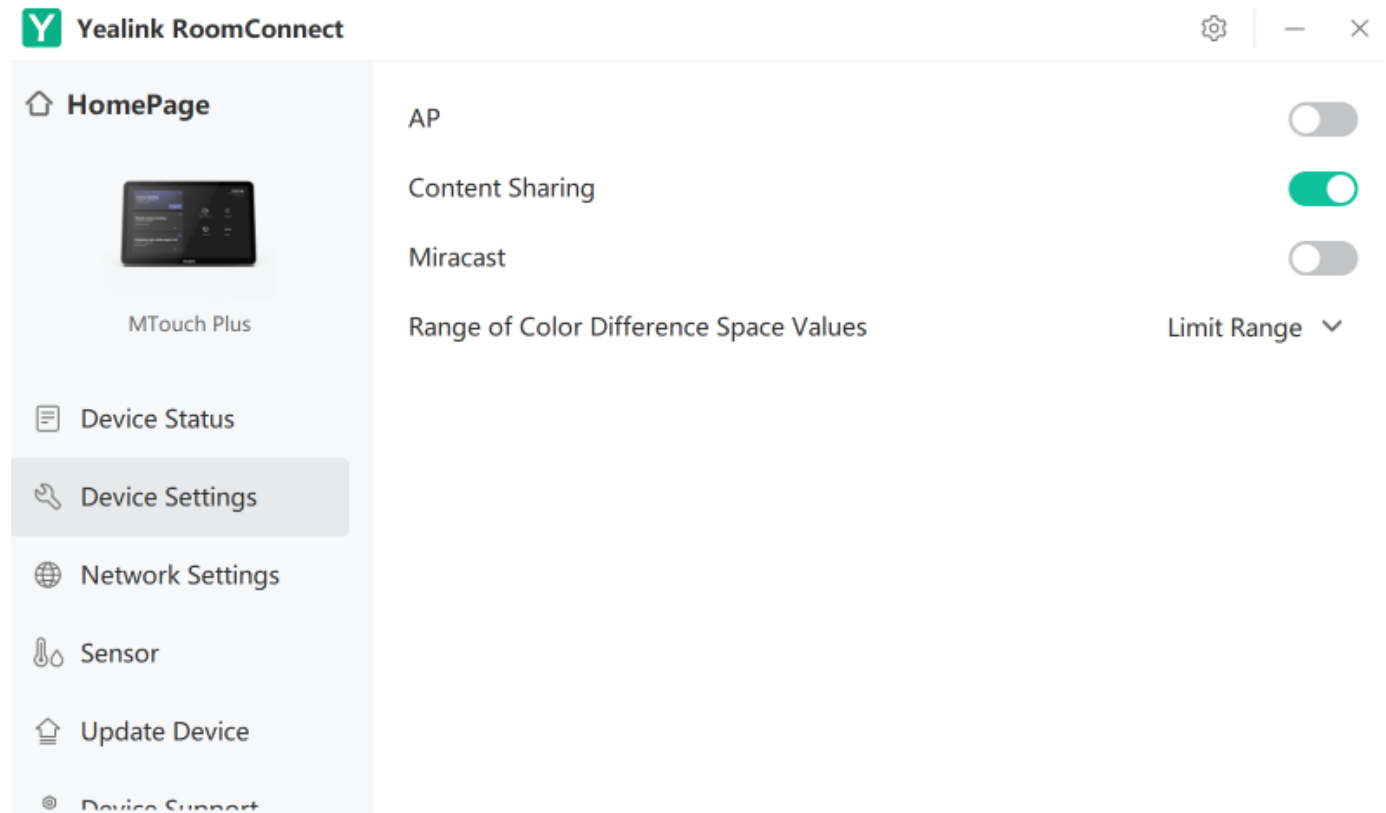
## Via Yealink MTouch Touch Panel

### Introduction

You can use Yealink MTouch Touch Panel to share content.

### Connect Yealink MTouch Touch Panel to PC

1. In the Windows mode, open Yealink RoomConnect.
2. Select Yealink MTouch Touch Panel, tap **Device Settings**, and turn on **Content Sharing**.



3. Switch the system to Teams mode.

4. Connect the USB-C port (labeled USB-C not PD) on the back of Yealink MTouch Touch Panel to the USB-C or HDMI port of PC using a USB (C-C, HDMI) cable.

## Share Audio

The wired sharing transmits all system audio output from your device. For example, if you have application audio notifications enabled during content sharing, participants will hear these notification sounds along with the audio.

The system automatically mutes your local audio when you start sharing content to avoid audio interference. When you stop sharing content, the system restores your local audio to its initial status.

## Stop Sharing

Do one of the following:

- Disconnect the cable from the PC.
- In the Microsoft Teams mode, tap **Stop Sharing** on your Yealink MTouch Touch Panel.

## Via HDMI Cable

### Introduction

Connect Yealink mini-PC to PC via a HDMI cable for content sharing. It is not applicable to ZVC devices.

- 💡 If multiple screens are being shared simultaneously, the content of the previous screen sharing will be replaced by the content of the later one (regardless of whether it is wired or wireless screen sharing).

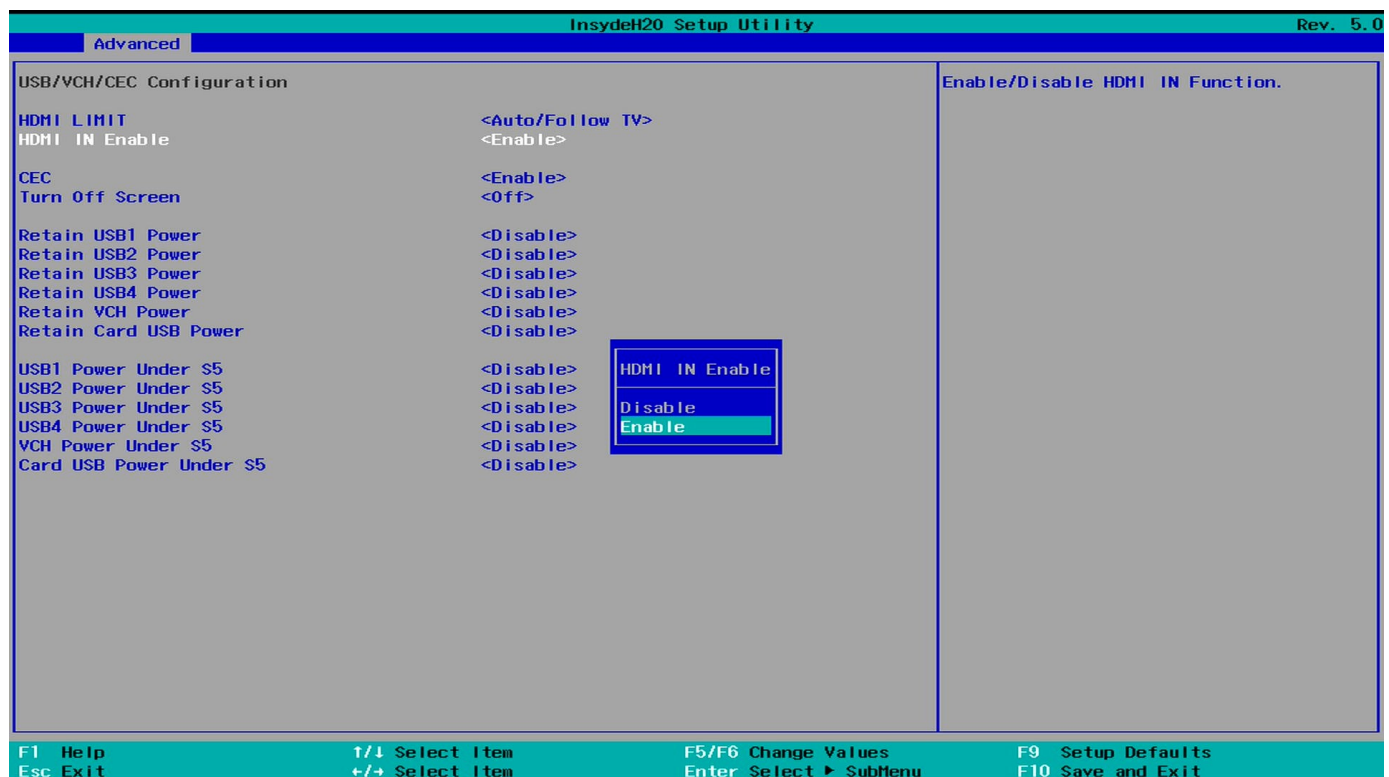
The sharing of auxiliary streams between MCore 4 HDMI IN and MTouch Plus is mutually exclusive.

## Before You Begin

- Only MCore 4 supports wired content sharing via HDMI cable.
- Log in to your Microsoft Teams on Yealink mini-PC.
- Update your MCore 4 to the latest version.
- Ensure that your PC has a HDMI port.
- Use the cable included in the package.
- The BIOS version needs to be upgraded to version 110 or higher. For details on how to upgrade, refer to: [BIOS Update](#).

## Enable HDMI IN

1. When Yealink mini-PC is powered on, press **Del/F2** to enter the BIOS interface.
2. Select **Advanced > HDMI IN Enable > Enable**.



3. Click **F10** to save the settings and Yealink mini-PC will restart.

## Share Content via HDMI

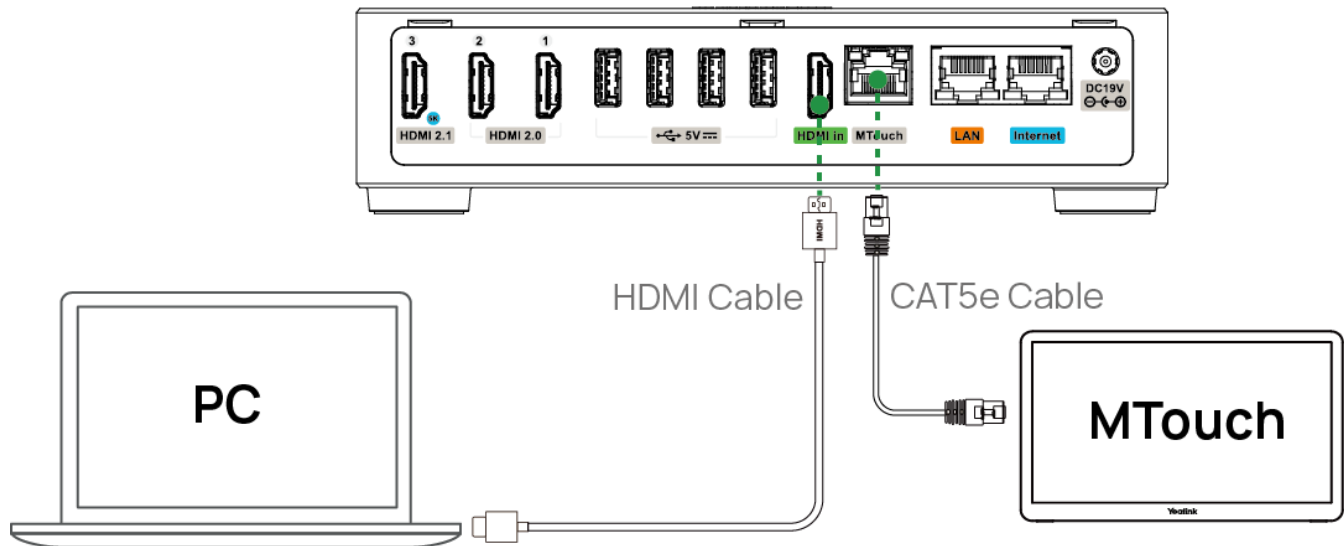
Before you begin

For Zoom: Turn off **Start HDMI content share manually on controller** in **Room Management > Zoom Rooms > Meeting** on the Zoom Admin Portal.

### To share content via HDMI

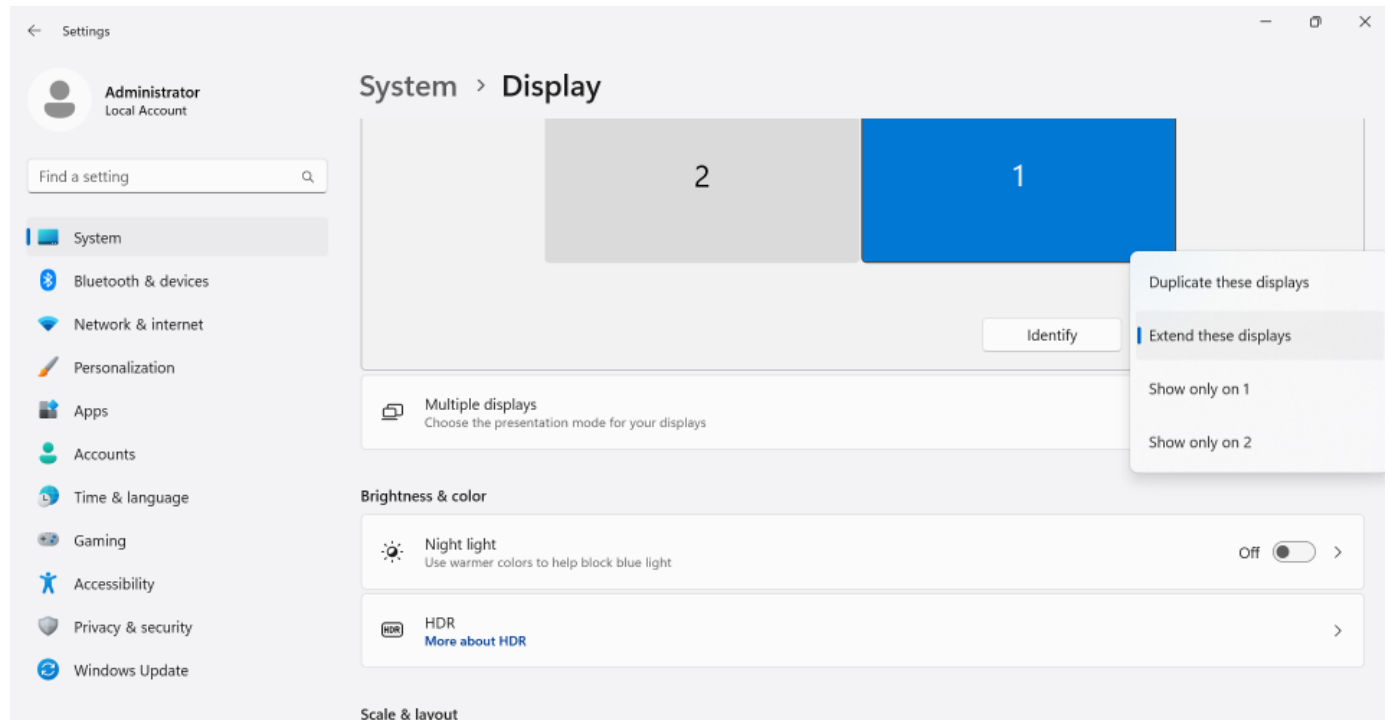
1. Connect the HDMI in port on the back of Yealink mini-PC to the HDMI port on the computer using an HDMI cable. The Yealink mini-PC automatically shares content after connecting.

## MCore 4

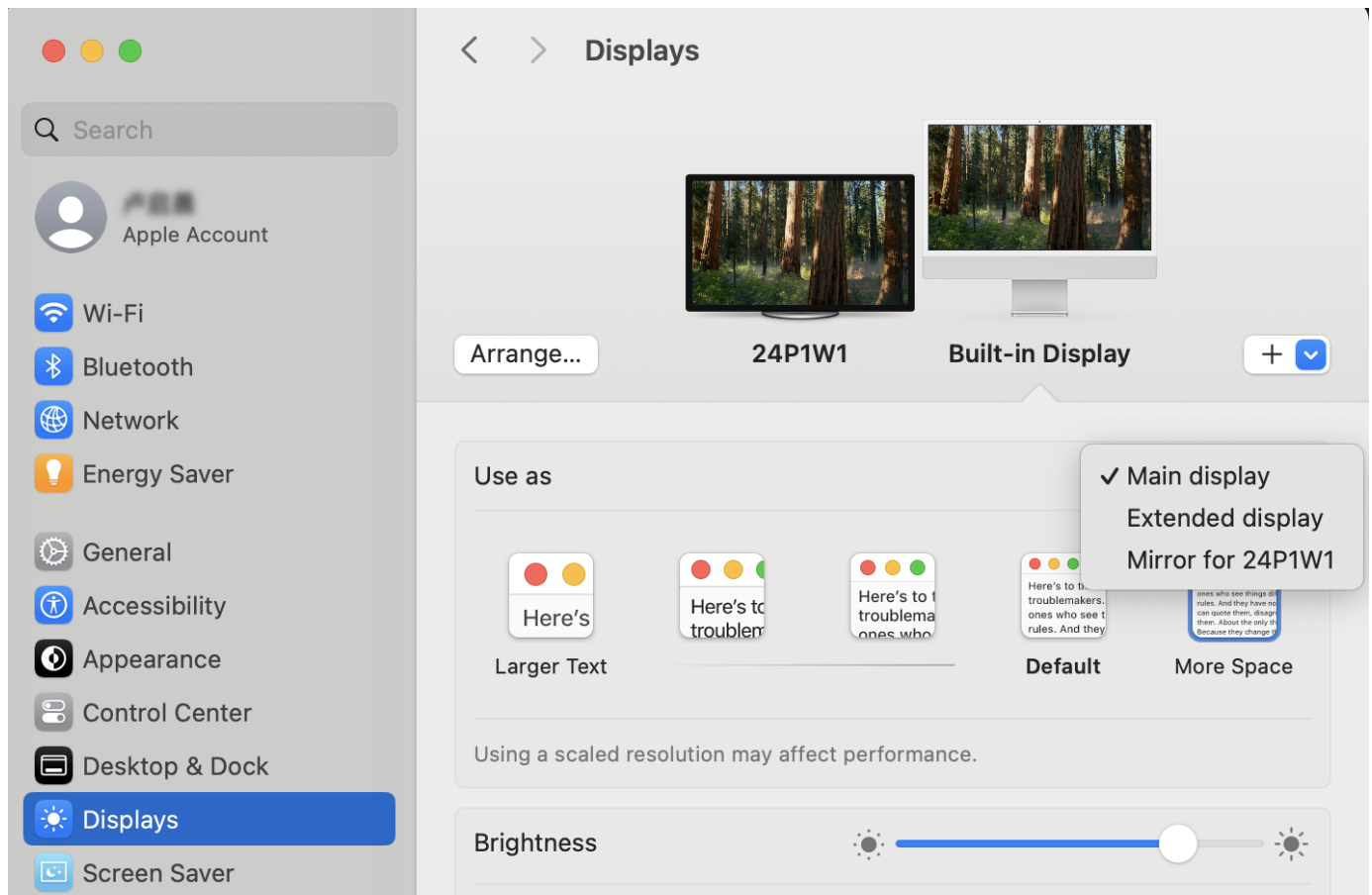


2. Optional: To select an extended display or duplicate your screen, follow these steps:

- Windows OS: Go to **Display** and select either **Extend these displays** or **Duplicate these displays** for your screens.



- macOS: Go to **System Preferences > Displays**. Click the target display and select **Extended** or **Mirror** display.



## Share Audio

The HDMI cable transmits all system audio output from your device. For example, if you have application audio notifications enabled during content sharing, participants hear these notification sounds together with the content audio.

To avoid audio interference, the system automatically mutes your local audio when you start sharing content. When you stop sharing content, the system restores your local audio to its initial status.

## Stop Content Sharing

Do one of the following:

- Disconnect the HDMI cable from the PC.
- In the Microsoft Teams mode, tap **Stop Sharing** on your Yealink MTouch Touch Panel.

## FAQ

**After connecting the USB/HDMI to the PC, the Yealink MTouch Touch Panel displays: No device connected?**

Check whether Yealink MTouch Touch Panel is updated to the latest version.

**How to check the current BIOS version?**

- Method 1: Press Del/F2 to enter the BIOS interface when booting, and check it on the Main

tab.

- Method 2: In Windows:
  - Press Win + R, enter cmd, and then enter: `wmic bios get smbiosbiosversion`
  - Or use tools (such as CPU-Z, AIDA64) to check.