

OWC Archive Pro: Windows ATTO SAS HBA Driver Instructions

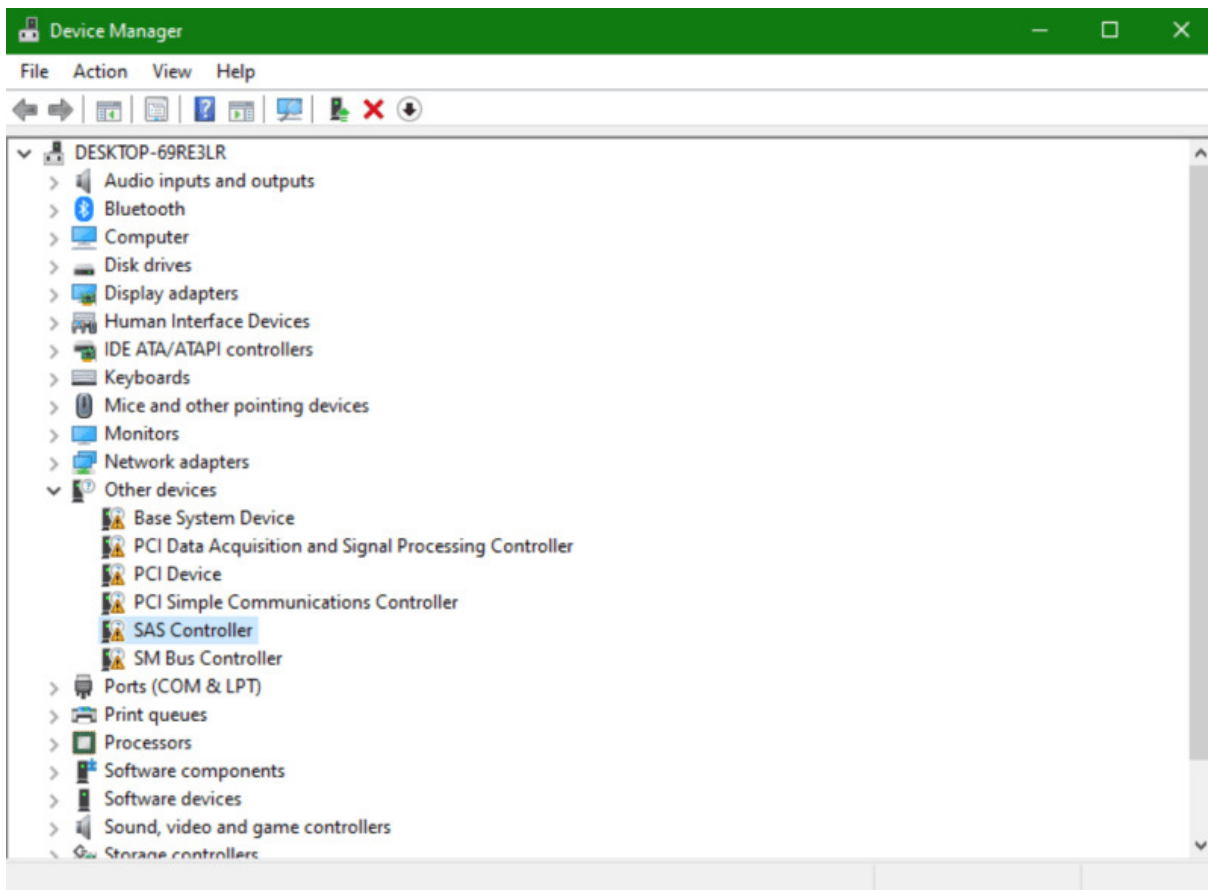
Support Article

Details

Thank you for purchasing the OWC Archive Pro. Initial use requires a few steps for setup. The OWC Archive Pro LTO tape drive communicates over a SAS connection and requires a driver to enable this interface.

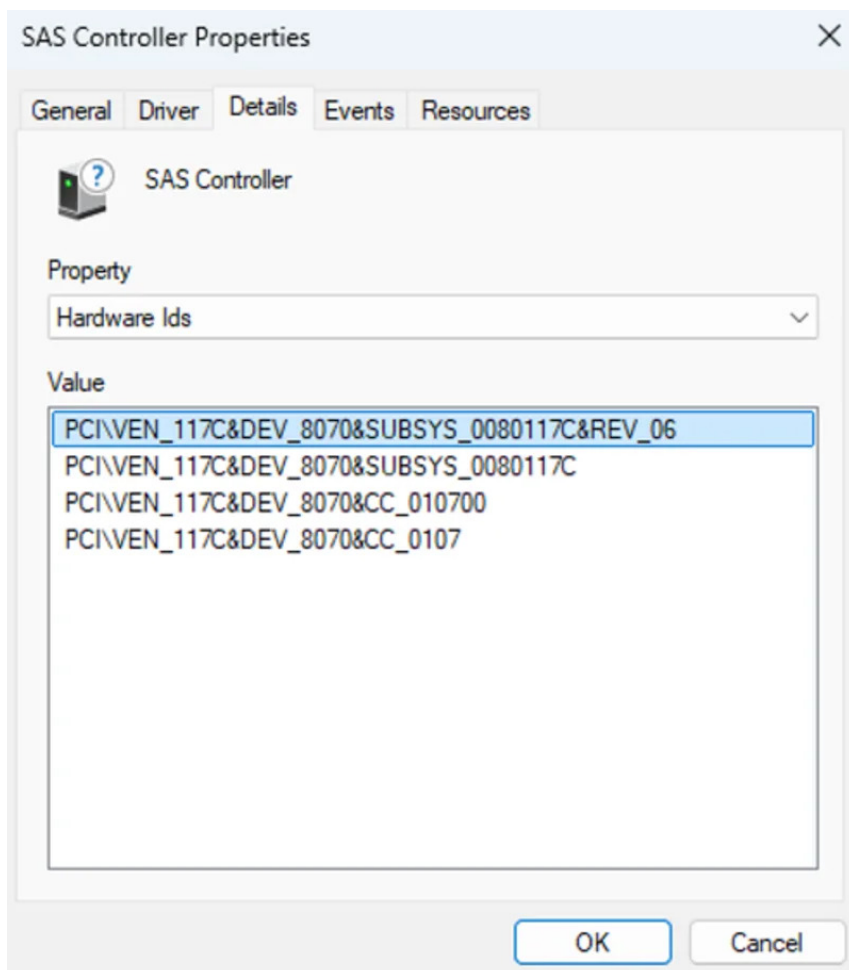
ATTO SAS HBA Driver - Required

1. Connect the OWC Archive Pro | OWC Mercury Pro LTO to the Thunderbolt 3 or 4 port on the computer. Power on the OWC Archive Pro | OWC Mercury Pro LTO. Login to the Windows system as an Administrator user (NOT as Administrator).
2. The driver version installed depends on the ATTO ExpressSAS HBA installed in the OWC Archive Pro. To determine the device's ID:
 - Open the Device Manager via the Start/Run Search menu. Right-click on the "SAS Controller" under "Other devices" and select "Properties".



3. Navigate to the Details tab. Select Hardware Ids in the drop-down menu and look for the device ID (DEV)

- The OWC Archive Pro | OWC Mercury Pro LTO should be
00e6
 - If your device ID is 00e6, you will need to install the ATTO ESASHBA5 driver. This device ID corresponds to the ATTO ExpressSAS H1244GT HBA (12Gb).
- The OWC Mercury Pro LTO unit can be
8070
or
00e6
 - If your device ID is 8070, you will need to install the ATTO ESASHBA4 driver. This device ID corresponds to the ATTO ExpressSAS H1244 HBA (12Gb).
 - If your device ID is 00e6, you will need to install the ATTO ESASHBA5 driver. This device ID corresponds to the ATTO ExpressSAS H1244GT HBA (12Gb).



4. Navigate to ATTO's website to download the required driver.

- If your device ID is 00e6 please visit:
ATTO Software Downloads
- if your device ID is 8070 please visit:
ATTO Software Downloads - Legacy

5. Select an ATTO Product plus a Product Family to begin:

- If your device ID is
00e6
 - ATTO Product
: ExpressSAS SAS HBAs
 - Product Family
: ExpressSAS 12Gb GT HBAs

- Operating System

: Windows

Click “Download” for the “ ”. Complete the request form to receive the driver file “**win_drv_esashba5_1080f1.exe**”.

- If your device ID is

8070

- ATTO Product

: ExpressSAS SAS HBAs

- Product Family

: ExpressSAS 12Gb HBAs

- Operating System

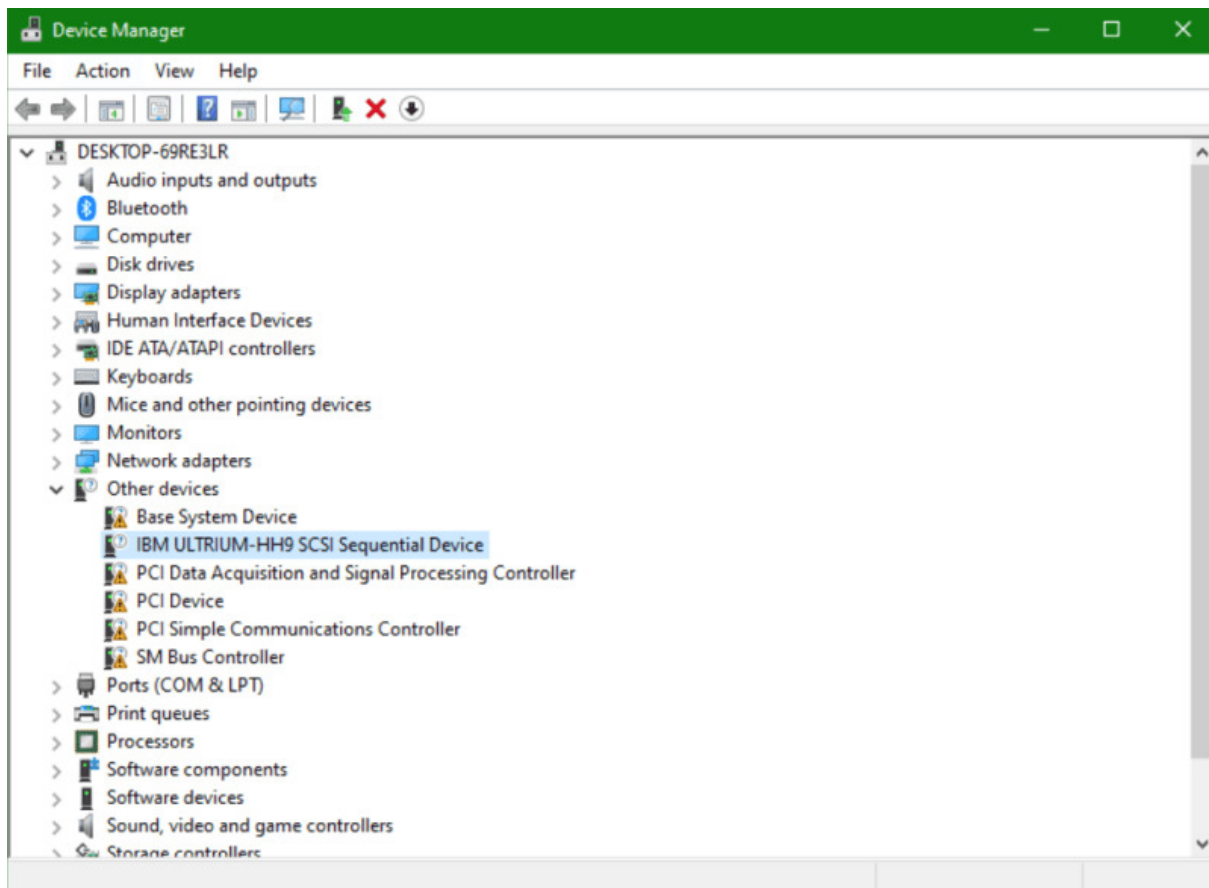
: Windows

Click “Download” for the “ ”. Complete the request form to receive the driver file “**win_drv_esashba4_1500f1.exe**”.

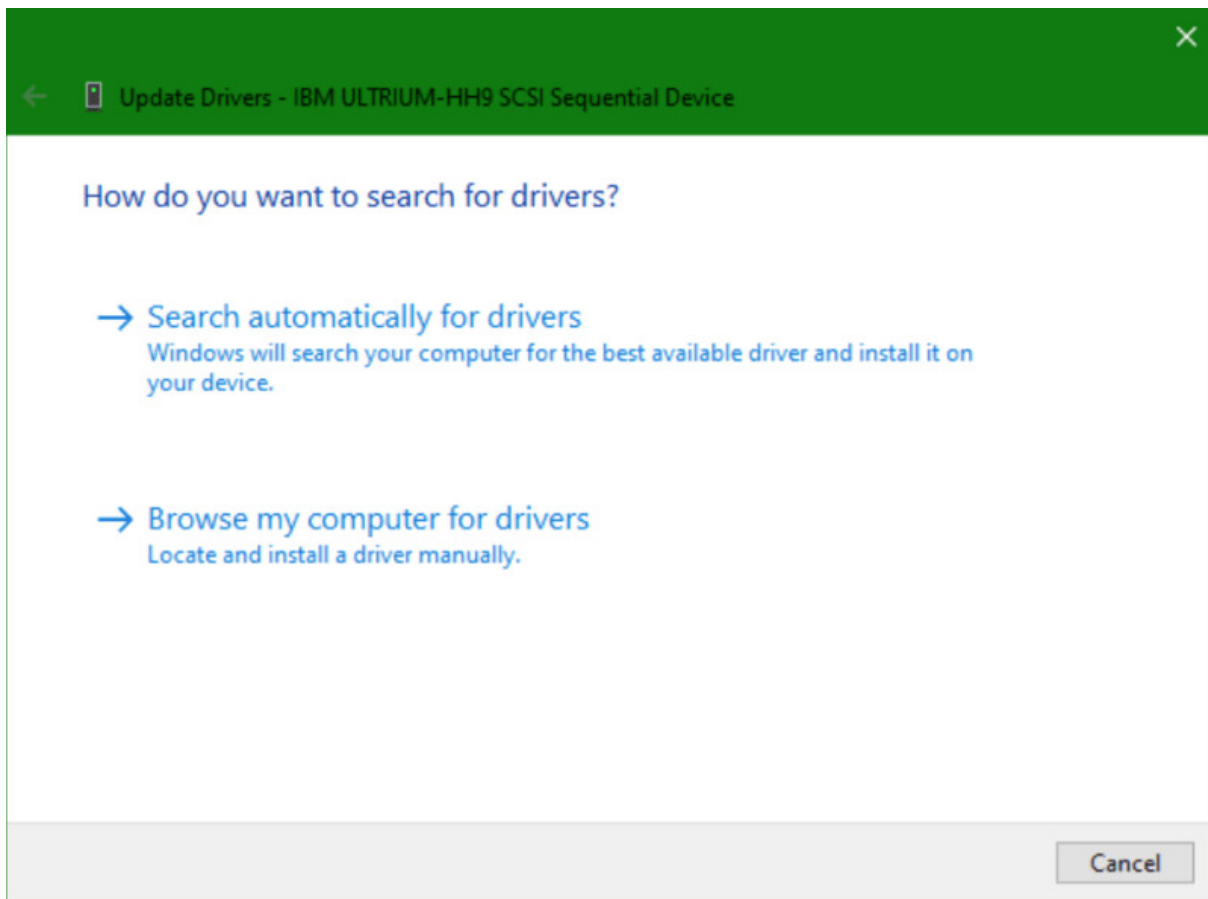
6. There is no need to download the ATTO ConfigTool or “Flash Bundle” packages

Installation of the driver is required for your Windows system to see and access the OWC Archive Pro | OWC Mercury Pro LTO LTO tape drive properly. Installation may require security authorized steps (dependent on your current system security settings) and will require a system reboot.

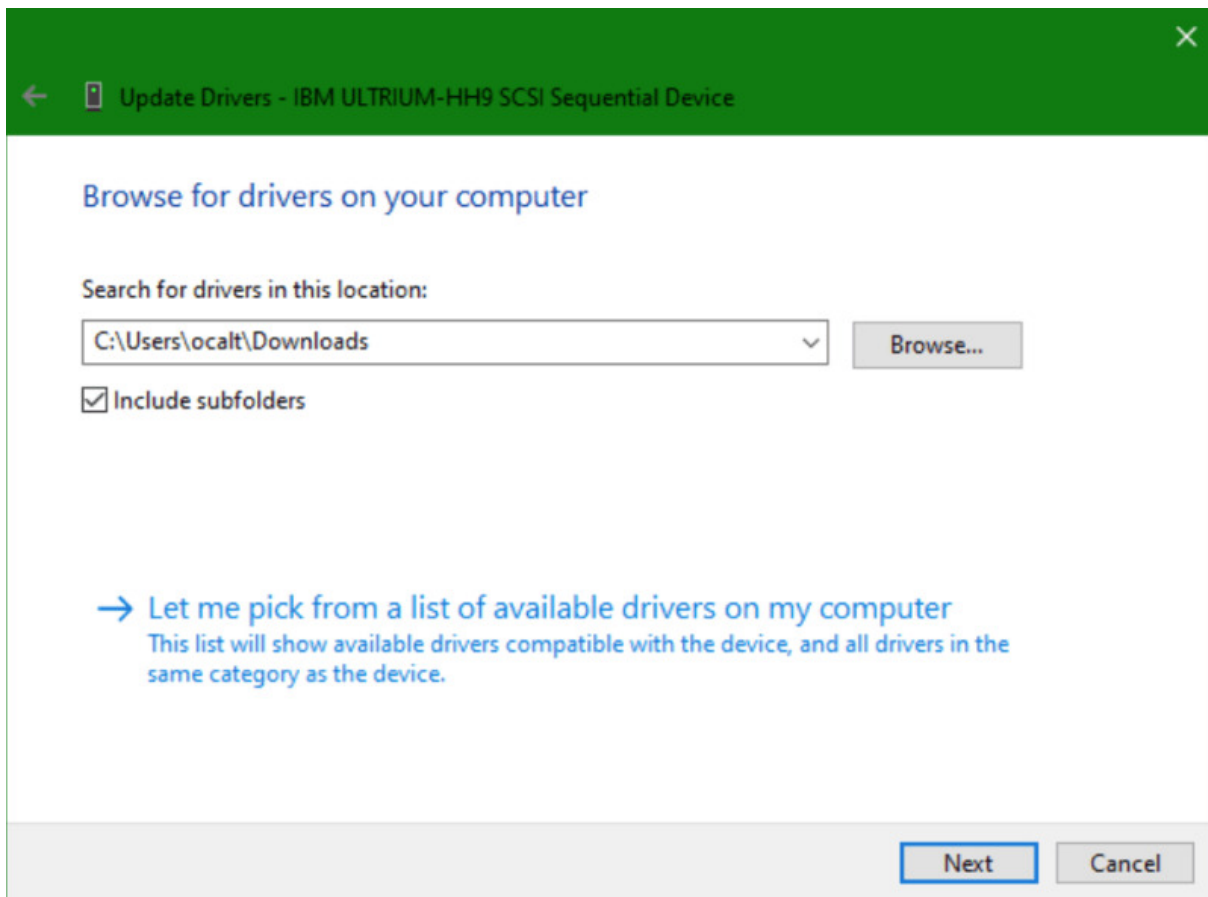
6. After restarting the system, open the Device Manager via the Start/Run Search menu. Right-click on the LTO tape drive under "Other devices" and select "Update Drivers".



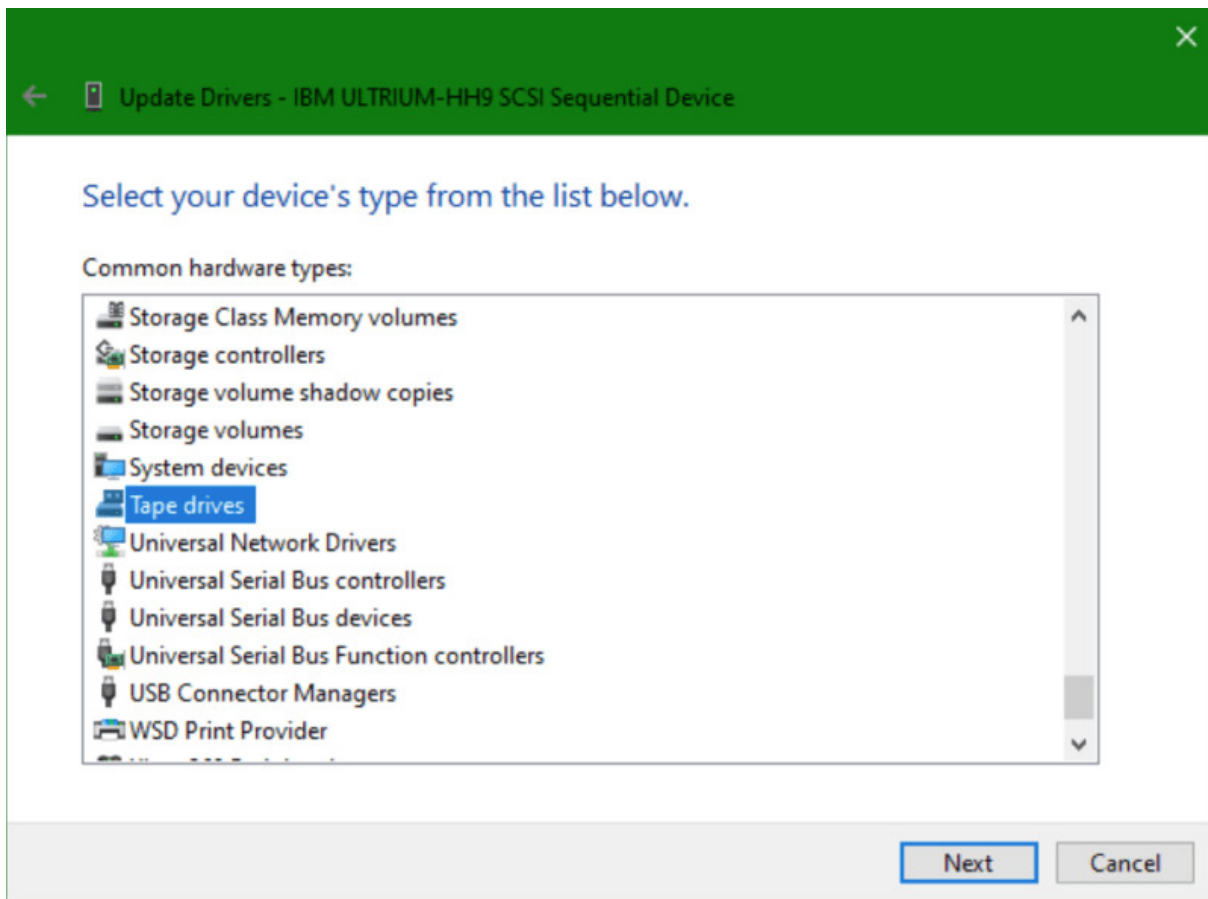
7. Select the "Browse my computer for drivers" option.



8. Select "Let me pick from a list of available drivers on my computer" option. Select the ATTO driver .exe file.



9. Select "Tape Drives" from the list and click Next.



10. Uncheck "Show Compatible hardware" if checked. Select the "LTO Tape Drive" entry presented and click Next.

NOTE : If warned about the driver not working, ignore the warning and select Continue. The driver will properly install.

Select the device driver you want to install for this hardware.



Select the manufacturer and model of your hardware device and then click Next. If you have a disk that contains the driver you want to install, click Have Disk.

☐ Show compatible hardware

Manufacturer

Exabyte

Hewlett Packard

LTO

Quantum

Seagate

Model

LTO Tape drive



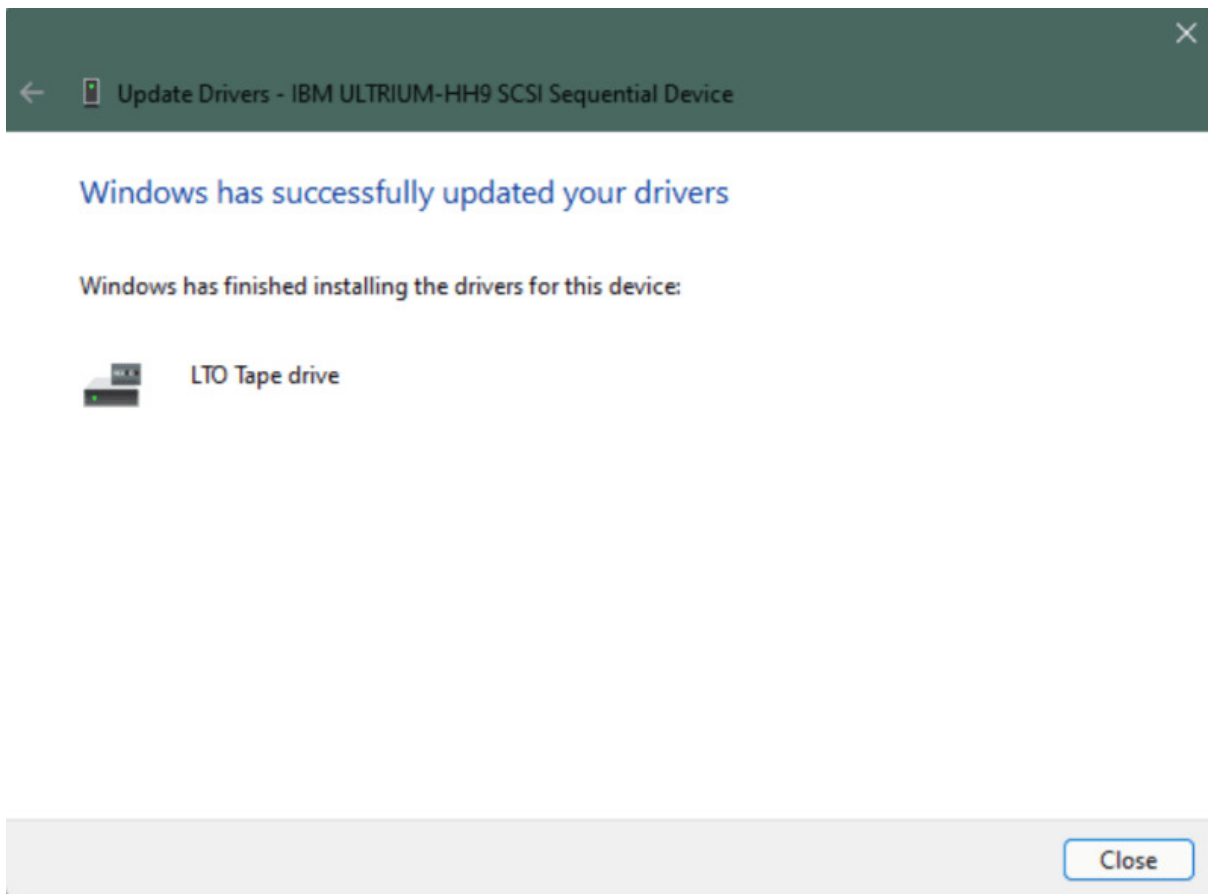
This driver is digitally signed.

[Tell me why driver signing is important](#)

Have Disk...

Next

Cancel



11. Once that completes, exit the properties dialog back to the main Device manager window. The unrecognized drive should now be listed in the "Tape Drive" section. This completes the driver installation process.

