

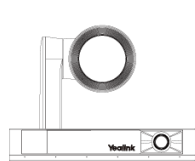
UVC86 Installation

Package Contents

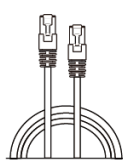
TIP

For the UVC86 unboxing video, please refer to [UVC86](#).

We recommend that you use the accessories provided or approved by Yealink. The use of unapproved third-party accessories may result in poor performance.

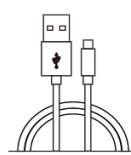


UVC86



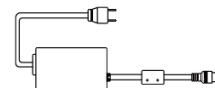
(7.5m, 24.60ft)

CAT5e UTP (RJ45 - RJ45) Cable



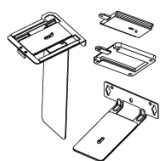
(7m, 8.20ft)

USB 2.0 (A - B) Cable



(3.5m, 11.48ft)

Power Adapter (48V/0.7A)



Mounting Bracket



× 4

Φ6 * 30 mm, white, Polyamide



× 4

4*30 FAHOZN3+ (+)



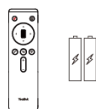
× 5

1/4" -20 UNC



× 2

M3*5.8KM0ZN3+



VCR20 Remote Control



× 5

(20 * 200 mm)
Cable Ties



Quick Start Guide

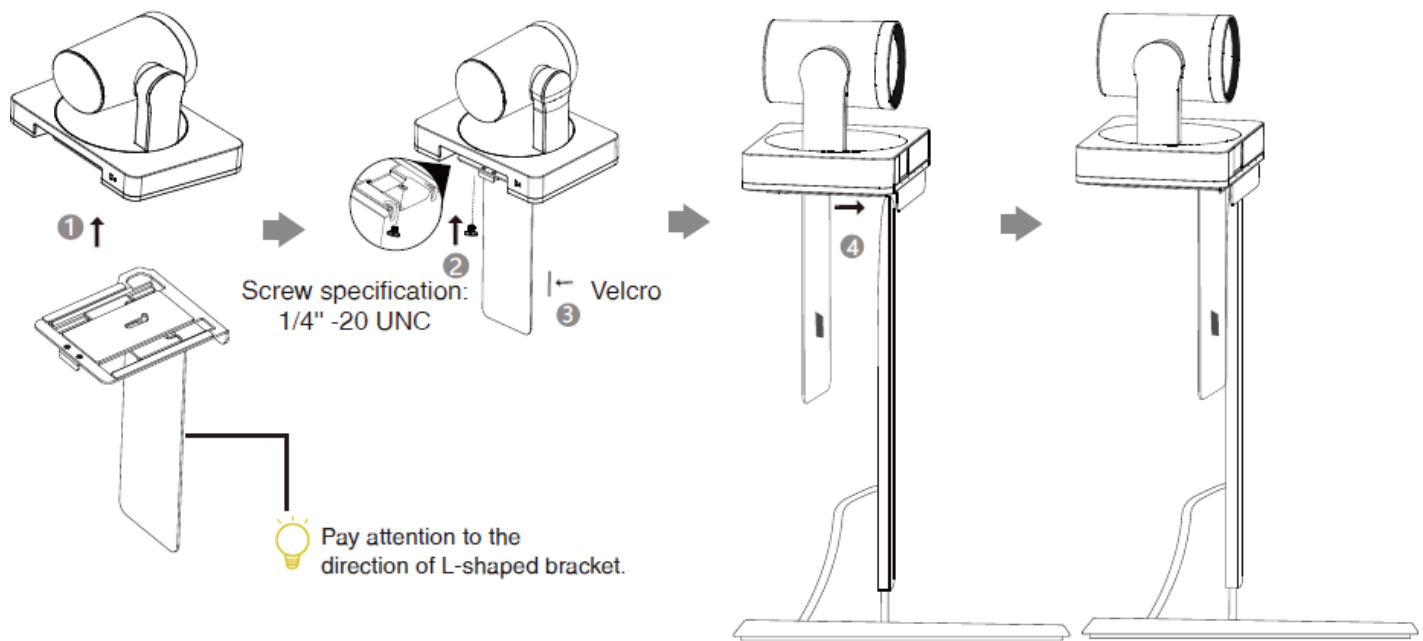
Install UVC86

• Put on a Flat Surface

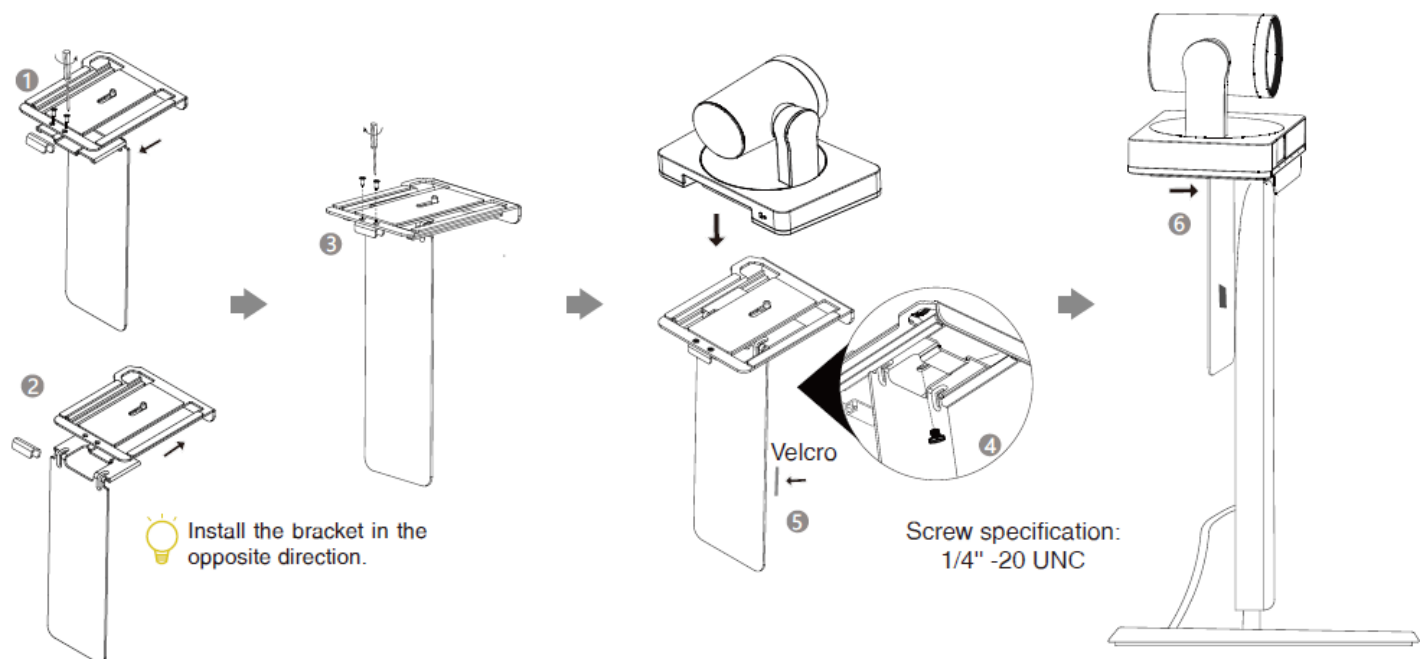
You can place the UVC86 on the conference table, ensuring that the angle of inclination is no more than 5 degrees for proper operation.

• Mount on Top of a Display

Choose the following installation method when the thickness of the TV is between 0 mm and 70 mm.

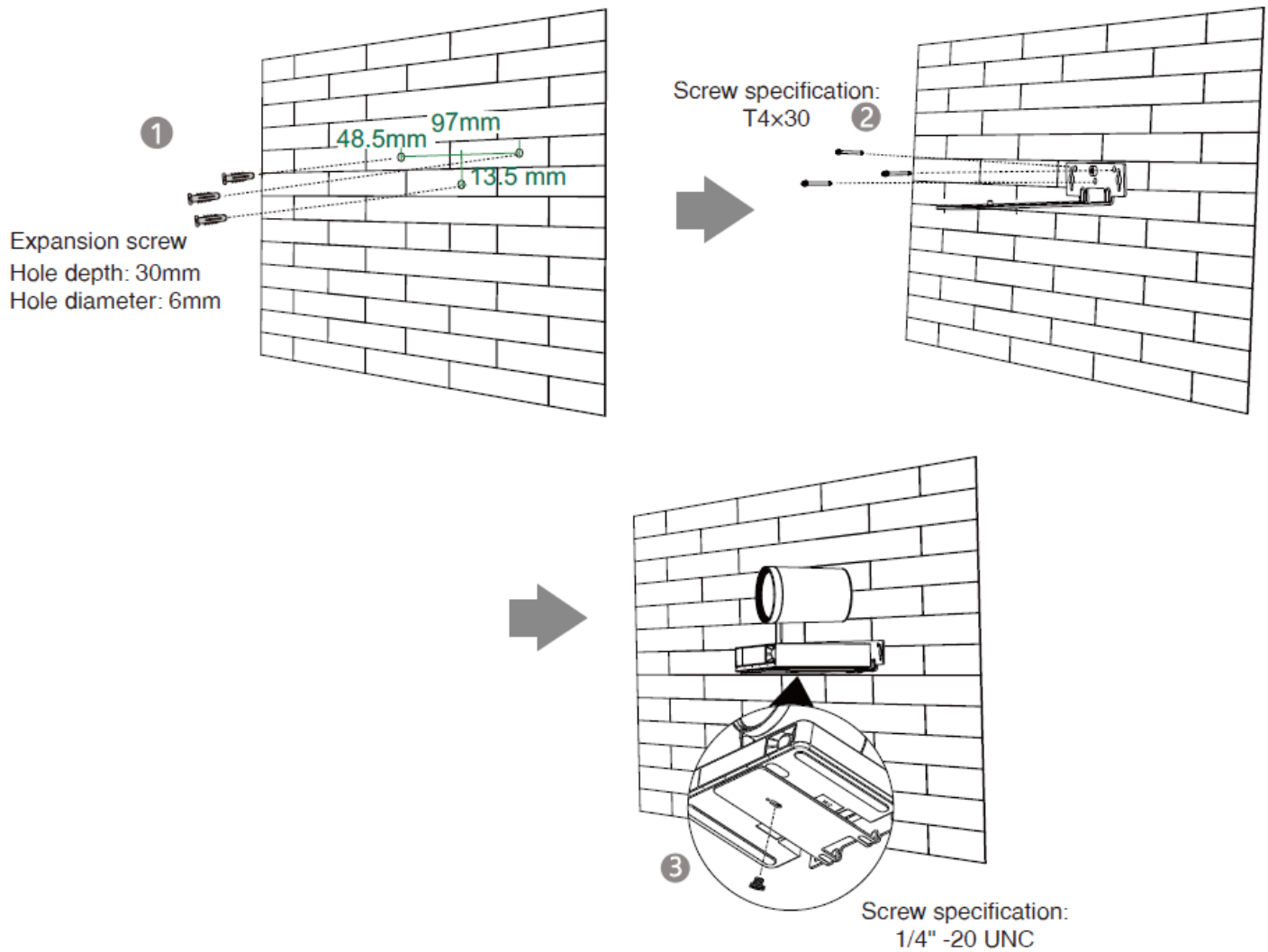


Choose the following installation method when the thickness of the TV is between 46 mm and 146 mm.

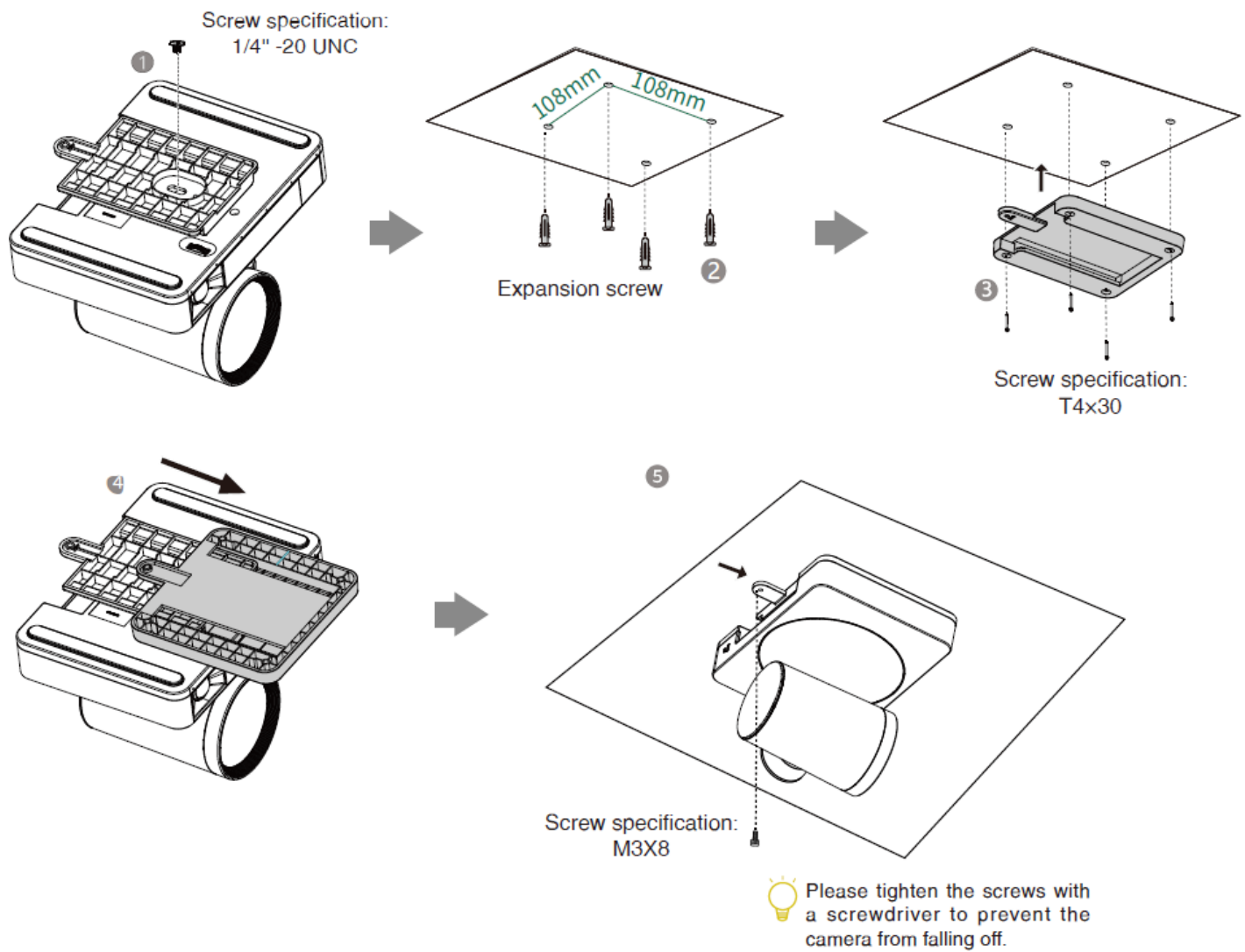


• Mount on the Wall

The recommended height is 1.55 m to 1.85 m above the ground.

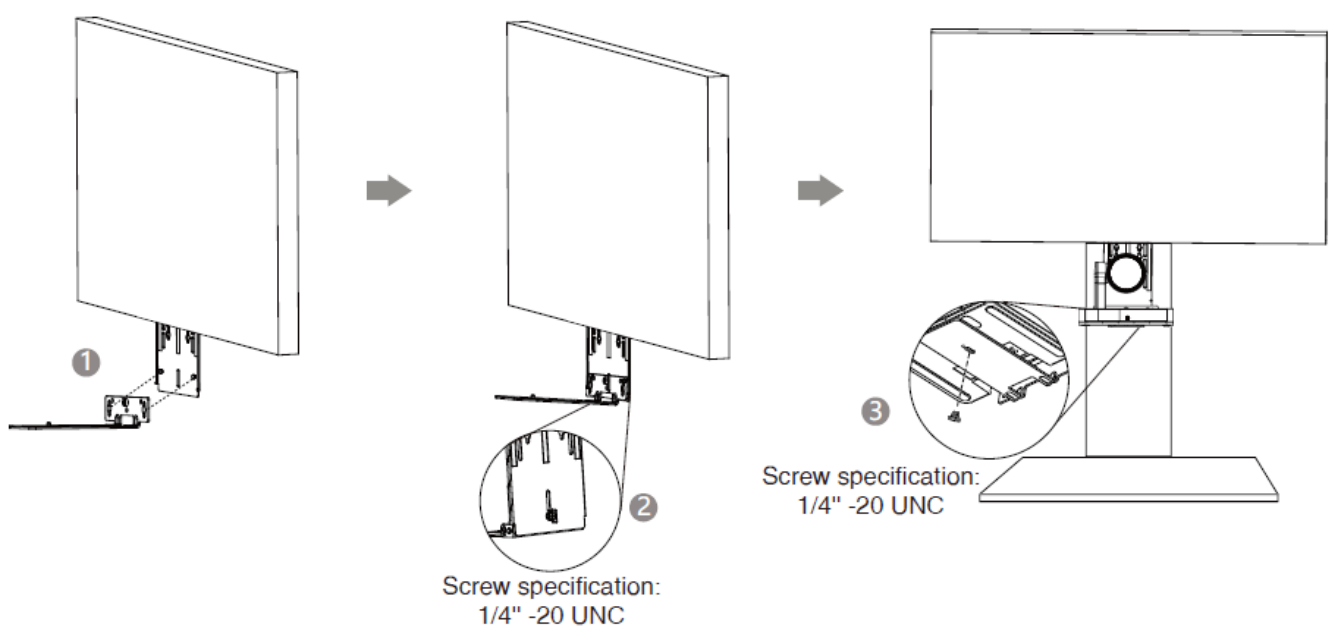


- **Mount on the Ceiling**



• **Mount onto a TV Mount**

You need to purchase a TV Mount separately.

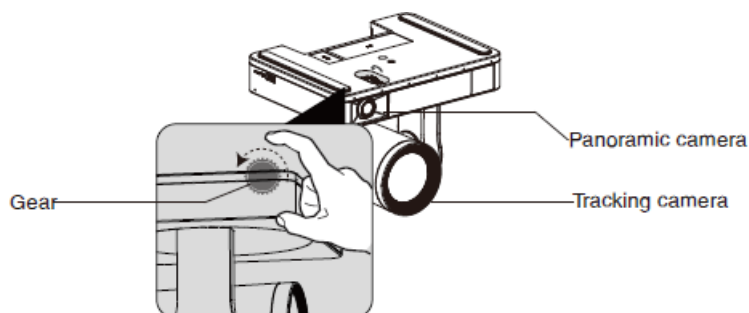


Lens Calibration

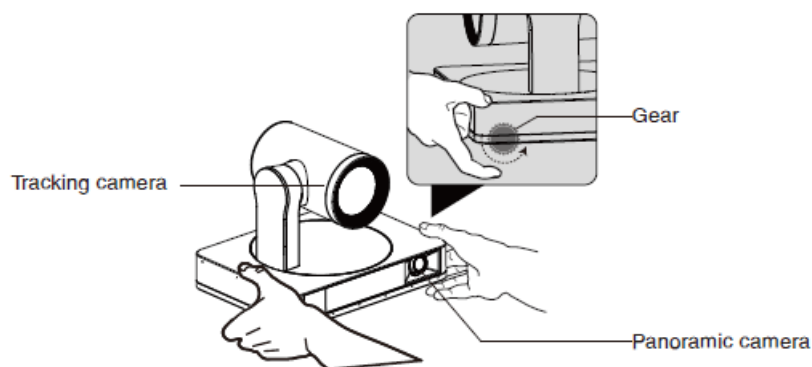
- **Manually Adjust the Panoramic Camera**

The UVC86 is equipped with dual cameras (panoramic camera and tracking camera). The panoramic camera is a mechanical device without a gimbal. To better adapt to the user's installation environment, it is allowed to manually adjust the pitch angle of $\pm 10^\circ$. According to the following actual usage scenarios, manually adjust the lens gear at the bottom of the UVC86.

When you mount the UVC86 on the ceiling, adjust the lens to point downward, as shown in the figure.



When you place the UVC86 on the desk, adjust the lens to point upward, as shown in the figure.



- **Lens Calibration Using Yealink Room Connect Software**

Since the coordinates of the panorama lens image analysis need to be used as the adjustment basis for the gimbal lens image during smart tracking, the image coordinate systems of the two lenses need to match each other. After manually adjusting the lens to a suitable angle, please use the Yealink Room Connect software to calibrate the lens.

1. Open the Yealink Room Connect software, and click **Device Settings > Lens Calibration**.
2. Click **OK** (the camera cannot be adjusted during the lens calibration).

NOTE

During the lens calibration process, please ensure that there is no obstruction in front of the lens, and the lens cannot be adjusted manually. If one calibration fails, try calibrating again.

Hardware Interface

UVC86

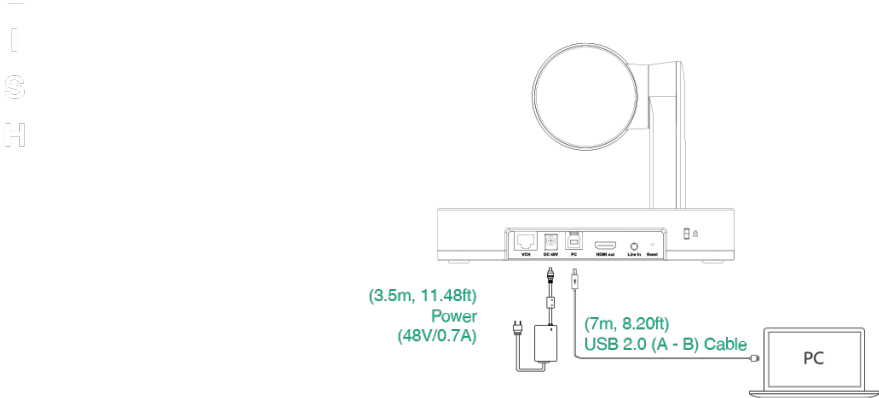
Please refer to [MVC Hardware Overview - UVC86 Camera](#) for details.

VCR20 Remote Control

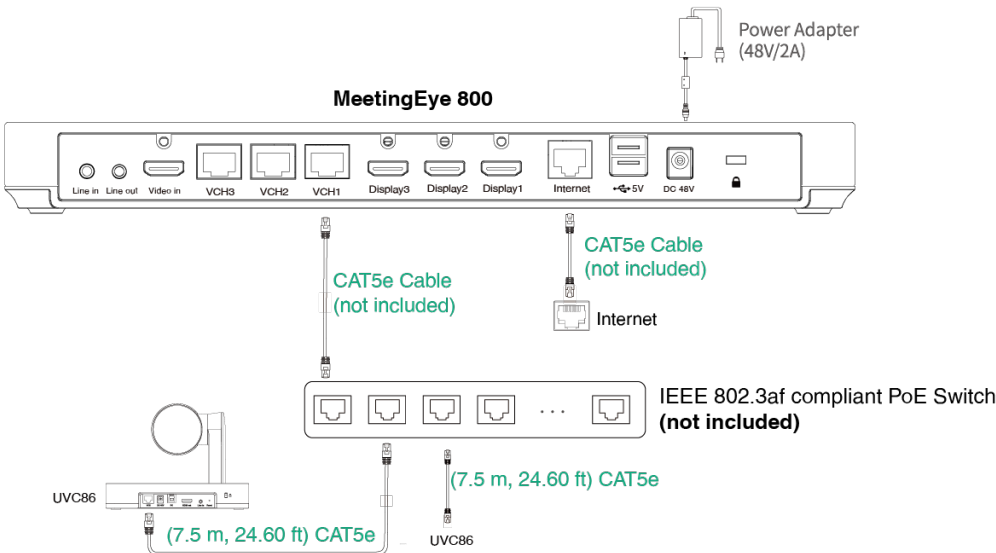
Please refer to [VCR20 Remote Control](#) for details.

Connect UVC86

- Connect to PC



- Connect to the Video Conference System



NOTE

- Supports connecting up to 2 cameras via PoE switch.
- Not included accessory requirements:
 - Ethernet cable: CAT5e or higher.
 - PoE switch: If you use PoE to connect cameras, you need to use PoE+.

LED Indicator

LED Status	Description
Off	The UVC86 is powered off.

Solid Green	The UVC86 is active.
Solid Red	The UVC86 is in sleep mode.
Flash Red	The UVC86 is in recovery mode.
Flash Orange	The UVC86 is upgrading firmware.