

HP ProOne 440 G9 AiO Desktop PC

Enterprise-class performance. All-in-One design.



Keep productive with a versatile PC featuring built-in collaboration, manageability, and security. The AiO design allows efficient use of your workspace, while easy deployment and secondary use as a stand-alone display make this a smart investment.



Enhanced meeting experience

Capture all the details and bring exceptional definition to virtual collaboration in varied environments with the 5MP camera¹ featuring temporal noise reduction for high-quality images in low light conditions.



Tools to amplify productivity

Accomplish your daily activities with the features that help you fulfill the needs of your business. The latest Intel[®] processors², along with essential graphics, memory, and storage options, allow you to match your PC to your computing needs.

Designed for ease of use

Stay focused and energized with an All-in-One that's TÜV certified for low blue light and low noise. Adjust your PC height to your preference with a height adjustable stand.³

Massive storage and performance options

With up to 2TB HDD¹⁴, up to 512GB self-encrypted SSD¹⁴, or up to 2TB SSD¹⁴, and up to 64GB¹ DDR5 memory, ensure you have plenty of storage for all your data and the latest memory to run all your apps—whether for work or leisure time.

Help protect our shared future

The EPEAT[®] registered⁵ and ENERGY STAR[®] certified HP ProOne 440 uses 100% sustainably sourced and recyclable outer box packaging⁶ and the speaker enclosure contains ocean-bound plastics.⁷

Protected by HP Wolf Security

HP Wolf Security for Business creates a hardware-enforced, always-on, resilient defense. From the BIOS to the browser, above, in, and below the OS, these constantly evolving solutions help protect your PC from modern threats.⁸

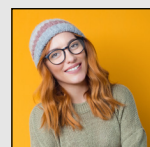
- HP Sure Click⁹
- HP Sure Sense¹⁰
- HP Sure Run Gen5¹¹
- HP Client Security Manager Gen7¹²
- HP Biosphere Gen7¹³
- HP Sure Start Gen7¹⁴
- HP Sure Admin¹⁵



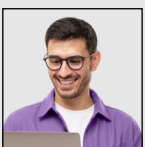
Designed for



Frontline
Pro



Creative
Experts



Tech
Experts

Recommended ecosystem¹⁶



HP E24u G5 FHD
USB-C Monitor



HP 405 Backlit Wired Keyboard
&
HP 425 Programmable
Bluetooth Mouse



HP USB-C
Dock G5



HP 325 FHD
Webcam



Poly Voyager
5200
Headset



HP ProOne 440 G9 AiO Desktop PC

OS	Windows 11 Home & Pro ¹⁷
Processor/Chipset	12th Gen, 13th Gen and latest Intel® Core™ up to Core™ i7 Processors ² , Intel® Q670, optional Intel® vPro ¹⁸
Graphics	Integrated: Intel® UHD Graphics 710 / 730 / 770 (processor dependent) Optional discrete graphics: AMD Radeon™ RX 6300M ¹
Form Factor	All-in-One
Dimensions	21.23 x 8.85 x 20.05in; 53.93 x 22.5 x 50.94 cm
Weight	7.77 kg; 17.75 lbs ¹⁹
Display	23.8" diagonal: IPS FHD (1920 x 1080), optional touch ³⁰ , anti-glare, micro-edge bezel, TUV certified low blue light panels ²⁰
Memory	Up to 64GB DDR5-4800 ²¹ Transfer rates up to 4800 MT/s. Both slots are customer accessible/ upgradeable. Supports dual channel memory ²²
Storage Options	Up to 2TB PCIe NVMe TLC M.2 SSD ⁴ 1TB SATA HDD Up to 1TB PCIe NVMe M.2 SSD Up to 512GB PCIe NVMe SED Opal 2 TLC M.2 SSD
Ports	1 SuperSpeed USB Type-C® 10Gbps signaling rate; 1 SuperSpeed USB Type-A 10Gbps signaling rate (charging) (2) SuperSpeed USB Type-A 5Gbps signaling rate (charging), (2) SuperSpeed USB Type-A 10Gbps signaling rate (charging), (1) DisplayPort™ 1.4a, (1) HDMI 1.4 in with Monitor Mode ²³ , (1) RJ-45 Flex Port Options: 1 HDMI 2.0; 1 serial; 1 DisplayPort™ 1.4, 1 SuperSpeed USB 10Gbps signaling rate port w/ DisplayPort™ Alt Mode
Camera & Audio	Optional Pull-up camera options: 1. 5MP camera ¹ + Temporal Noise Reduction (TNR) 2. 5MP camera with IR camera + CLS + TNR Improved IR sensor: 850nm to 940nm Audio by Bang & Olufsen, headphone/microphone combo, high performance integrated stereo speakers (2) integrated 2W speakers
Communications	LAN: Integrated Intel® I219LM GbE LOM WLAN: Intel® Wi-Fi 6E ²⁴ AX211 802.11ax 2x2 with Bluetooth® M.2 Combo Card vPro®; Realtek Wi-Fi 6 ²⁵ 802.11ax 2x2 with Bluetooth® M.2 Combo Card; Realtek 802.11ac 1x1 with Bluetooth® M.2 Combo Card
Expansion slots	(1) M.2 2230 (for WLAN), (2) M.2 2280 (for PCIe Gen4 SSD storage); opt. Slim ODD, 1x 2.5" (ODD and HDD share same slot), 1x SD card reader
Security/Manageability	HP Wolf Security for Business ⁸ , HP Sure Sense ¹⁰ , HP Sure Start Gen7 ¹⁴ , HP Sure Click ⁹ , HP Sure Run Gen5 ¹¹ , HP Sure Recover Gen5 ²⁶ , HP Sure Admin ¹⁵ , HP Client Security Manager Gen7 ¹² , HP BIOSphere Gen7 ¹³ , HP Tamper Lock ²⁷ , HP Secure Erase ²⁸ , dTPM 2.0, MFST Secure Core PC Certified ²⁹ , optional intrusion sensor, security lock slot, chassis cable lock support
Sustainability	ENERGY STAR® certified, EPEAT® registered ⁵ ; 100% sustainably sourced and recyclable outer box packaging ⁶ and the speaker enclosure contains ocean-bound plastics. ⁷



HP ProOne 440 G9 AiO Desktop PC

Footnotes

1. Optional feature that must be configured at the time of purchase
2. Multicore is designed to improve performance of certain software products. Not all customers or software applications will necessarily benefit from use of this technology. Performance and clock frequency will vary depending on application workload and your hardware and software configurations. Intel's numbering, branding and/or naming is not a measurement of higher performance
3. All-in-One stand and mount offerings include adjustable-height stand, fixed-height stand, or VESA mounting and must be configured at the time of purchase.
4. For hard drives and solid-state drives, GB=1billion bytes, TB = 1 trillion bytes. Actual formatted capacity is less. Up to 35GB of system disk is reserved for system recovery software.
5. Based on US EPEAT® registration according to IEEE 1680.1-2018 EPEAT®. EPEAT® status varies by country. Visit www.epeat.net for more information
6. 100 percent outer box packaging made from sustainably sourced certified and recycled fibers. Fiber cushions made from 100 percent recycled wood fiber and organic material. Any plastic cushions are made from >90% recycled plastic.
7. Speaker enclosure component contains 5 percent ocean-bound plastic by weight.
8. HP Wolf Security for Business requires Windows 10 or 11 Pro or higher, includes various HP security features and is available on HP Pro, Elite, Workstation, and RPOS products. See product details for included security features.
9. HP Sure Click requires Windows 10. See https://bit.ly/2PrLT6A_SureClick for complete details.
10. HP Sure Sense is available on select HP PCs and is not available with Windows10 Home.
11. HP Sure Run Gen5 is available on select HP PCs and requires Windows 10 or higher.
12. HP Client Security Manager Gen6/Gen7 requires Windows and is available on the select HP Elite and Pro PCs.
13. HP BIOSphere Gen7 requires Windows 10 and is available on select HP Pro and Elite PCs. Features may vary depending on the platform and configurations.
14. HP Sure Start Gen7 is available on select HP PCs and requires Windows 10 or higher.
15. HP Sure Admin requires Windows 10 or higher and HP BIOS.
16. Sold separately or as an optional feature.
17. Windows® 11, and Windows® 11 Pro are registered trademarks or trademarks of Microsoft Corporation in the United States and/or other countries.
18. Intel vPro® requires Windows 10 Pro 64 bit or higher, a vPro supported processor, vPro enabled chipset, vPro enabled wired LAN and/or Wi-Fi 6E WLAN and TPM 2.0. Some functionality requires additional 3rd party software in order to run. Features of vPro® Essentials and Enterprise vary. See <http://intel.com/vpro>
19. Exact weight depends on configuration.
20. Low blue light panel is only available on non-touch models.
21. Memory modules support data transfer rates up to 5600/MTs requires selected Intel Core 14th Gen i5, i7 or i9 CPUs. Memory configuration without selected CPUs support data transfer rates up to 4800 MT/s. Actual data rate is determined by the system's configured processor. See processor specifications for supported memory data rate. All memory slots are customer accessible / upgradeable.
22. Supports dual channel memory: Due to the non-industry standard nature of some third-party memory modules, we recommend HP branded memory to ensure compatibility. If you mix memory speeds, the system will perform at the lower memory speed.
23. HDMI cable is sold separately.
24. Wi-Fi 6E requires a Wi-Fi 6E router, sold separately, to function in the 6GHz band. Availability of public wireless access points limited. Wi-Fi 6E is backwards compatible with prior 802.11 specs. And available in countries where Wi-Fi 6E is supported.
25. Wireless access point and Internet service required and sold separately. Availability of public wireless access points limited. Wi-Fi 6 (802.11ax) is backwards compatible with prior 802.11 specs.
26. HP Sure Recover Gen5 is available on select HP PCs and requires Windows 10 and an open network connection. You must back up important files, data, photos, videos, etc. before using HP Sure Recover to avoid loss of data. Network based recovery using Wi-Fi is only available on PCs with Intel Wi-Fi Module.
27. HP Tamper Lock requires a supervisor password be established prior to use.
28. For the methods outlined in the National Institute of Standards and Technology Special Publication 800-88 "Clear" sanitation method. HP Secure Erase does not support platforms with Intel® Optane™
29. Requires an Intel® vPro®, AMD Ryzen™ Pro processor or Qualcomm® processor with SD850 or higher and requires 8 GB or more system memory. Secured Core PC functionality can be enabled from the factory.
30. Actual brightness will be lower with Sure View or touchscreen.

© Copyright 2024 HP Development Company, L.P. The information contained herein is subject to change without notice. The only warranties for HP products and services are set forth in the express warranty statements accompanying such products and services. Nothing herein should be construed as constituting an additional warranty. HP shall not be liable for technical or editorial errors or omissions contained herein.

Intel, Intel Core, Intel vPro and Intel Optane are trademarks of Intel Corporation or its subsidiaries in the U.S. and/or other countries. Thunderbolt is a trademark of Intel Corporation or its subsidiaries in the U.S. and/or other countries. Bluetooth is a trademark owned by its proprietor and used by HP Inc. under license. USB Type-C® and USB-C® are registered trademarks of USB Implementers Forum. DisplayPort™ and the DisplayPort™ logo are trademarks owned by the Video Electronics Standards Association (VESA) in the United States and other countries. Members of Wi-Fi Alliance® are bound to follow the requirements of the Brand Style guide pursuant to the Certification Mark License Agreement. Please contact brandusage@wi-fi.org if you have any questions about Wi-Fi Alliance mark usage, requirements. Microsoft®, Windows® 11, and Windows® 11 Pro are registered trademarks or trademarks of Microsoft Corporation in the United States and/or other countries.

