

# HP Pro 400 Mini G9 Desktop PC

Stay competitive in a constantly evolving business environment and make the most of your technology investment. Commercial-grade features for productivity, expandability, and security, come neatly packaged in this ultra-small chassis.



## Robust desktop performance

Accomplish everything from minor tasks to complex projects with the latest Intel® processor<sup>2</sup>, high-speed memory, and essential ports. This value-priced Mini Desktop provides smooth, straightforward performance and diversified upgradeability.



## Flex ports for easy expansion

Configure your Mini your way with flex ports for legacy support or clean desk connectivity or expand with optional dual storage and expansion modules.<sup>3</sup>

## Advanced wireless connectivity

Get a premium connectivity experience, even in crowded wireless networks, with a fast, reliable wireless connection. This Pro Mini 400's gigabit data rate Wi-Fi 6E wireless LAN<sup>7,8</sup> module supports HP Extended Range Wireless LAN.

## Flexible mounting options

Arrange your workspace with multiple, versatile mounting options and holders for your PC and power supply. Choose from a mounting plate or secure VESA sleeve and EPS holder<sup>15</sup>, optimizing to the way you work.

## Help protect our shared future

Sustainability is a priority in HP product design. The HP Pro Mini 400 Desktop PC uses a high-efficiency power supply and molded-pulp packaging to reduce environmental impact.<sup>5</sup>

## Protected by HP Wolf Security

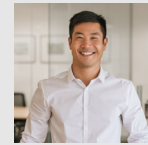
HP Wolf Security for Business creates a hardware-enforced, always-on, resilient defense. From the BIOS to the browser, above, in, and below the OS, these constantly evolving solutions help protect your PC from modern threats.<sup>4</sup>

## Multiple Deployment Options

Save space on your desk by mounting the whisper quiet HP Elite Mini 800 with an optional VESA sleeve or power it with a single cable connection to an optional HP 7 Pro Series display with built in collaboration features



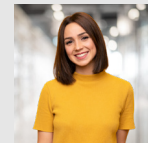
## Designed for



Frontline Pro



Office Independents



Remote collaborators

## Recommended ecosystem<sup>16</sup>



HP E27u G5 QHD USB-C Monitor



HP 655 Wireless Keyboard and Mouse Combo



Poly Blackwire 8225



# HP Pro Mini 400 G9 Desktop PC

Processor	12 <sup>th</sup> , 13 <sup>th</sup> and 14 <sup>th</sup> Gen Intel® 35W processors <sup>1</sup> up to Core™ i7 /O670 Optional vPro® <sup>33</sup>
Graphics	Intel® UHD Graphics
Memory	Two SoDIMM Slots, Up to 64 GB DDR5 4800 MT/s <sup>41</sup>
Storage	(1) M.2 NVMe PCIe Gen4 SSD up to 2TB, (1) HDD up to 1TB <sup>34</sup>
Expansion slots	1st Flex Port Card: (1) VGA Option Card, (1) HDMI Option Card, (1) DisplayPort™ Option Card, (1) Type-C® SuperSpeed USB 10Gbps w/ DisplayPort™ Alt Mode and up to 100W power intake, (1) Serial Port Option card, (1) Thunderbolt™ 3 with USB4.0 Option card (AMO) 2nd Flex Port Card: (1) Serial Port, (1) Dual Type A Hi-Speed USB 480Mbps signaling rate, (1) 2nd External Antenna
Ports & connectors	Front: (1) Type-C® SuperSpeed USB 20Gbps signaling rate with 15W PD, (1) Type-A™ SuperSpeed USB 10Gbps signaling rate, (1) Type-A™ SuperSpeed USB 10Gbps signaling rate (charging port), (1) Combo Audio Jack with CTIA /OMTP headset support Rear: (1) RJ-45, (1) Type-A™ SuperSpeed USB 10Gbps signaling rate, (2) Type-A™ SuperSpeed USB 5Gbps signaling rate, (1) HDMI 2.0b, (2) DisplayPort™ 1.4, (1) Flex Port 1, (1) Flex Port 2 (see Expansion Slots)
Communication	LAN: Integrated Intel® I219LM GbE LOM ; Intel® Wi-Fi 6E <sup>4</sup> AX211 (2x2) and Bluetooth® 5.3 Wireless Card, vPro®; Intel® Wi-Fi 6E <sup>4</sup> AX211 (2x2) and Bluetooth® 5.3 Wireless Card, non vPro®; Realtek Wi-Fi 6 <sup>32</sup> RTL8825BE 802.11a/b/g/n/ax (2x2) and Bluetooth® 5.2 combo
Battery & adapters	90W external power adapter Support power intake up to 100W with USB Type-C® power delivery
Security/ Software	TPM 2.0, Sure Start Gen7 <sup>23</sup> , HP Sure Run Gen5 <sup>25</sup> , HP Sure Recover Gen5 <sup>27</sup> , HP Sure Click <sup>30</sup> , HP Manageability Integration Kit Gen5 <sup>18</sup> HP Sure Sense <sup>20</sup> , HP BIOSphere Gen6 <sup>22</sup> , HP image Assistant
Dimension/weight	17.7 x 17.5 x 3.4 cm; 1.42 kg; (Exact weight depends on configuration.)
Sustainability	Speaker enclosure, fan housing / ducts & front I/O strip made from recycled material including ocean-bound plastics <sup>13</sup> ; Molded paper pulp cushion inside box is 100% sustainably sourced and recyclable <sup>12</sup> ; Outer Box packaging and corrugated cushions are 100% sustainably sourced and recyclable <sup>10</sup> ; low halogen; Bulk packs available.



# HP Pro Mini 400 G9 Desktop PC

## Footnotes

1. Multicore is designed to improve performance of certain software products. Not all customers or software applications will necessarily benefit from use of this technology. Performance and clock frequency will vary depending on application workload and your hardware and software configurations. Intel's numbering, branding and/or naming is not a measurement of higher performance.
2. Optional feature that must be configured at the time of purchase.
3. Requires Windows 10 or higher and internet access.
4. Wi-Fi 6E requires a Wi-Fi 6E router, sold separately, and Windows 11 to function in the 6GHz band. Availability of public wireless access points limited. Wi-Fi 6E is backwards compatible with prior 802.11 specs. Available in countries where Wi-Fi 6E is supported.
5. Based on internal testing vs. previous generation product with 802.11ac wireless LAN module.
7. HP Total Test Process testing is not a guarantee of future performance under these test conditions. Any accidental damage requires an optional HP Accidental Damage Protection Care Pack.
8. HP Proprietary Research, 2018
10. 100% outer box packaging made from sustainably sourced certified and recycled fibers. Fiber cushions made from 100% recycled wood fiber and organic material. Any plastic cushions are made from >90% recycled plastic.
12. Molded Pulp cushions made from 100% recycled wood fiber and organic materials.
13. For Mini 400 G9: PC speaker enclosure made with 30% ocean-bound plastic by weight; front bezel I/O strip and front bezel frame components each made with 5% ocean-bound plastic by weight.
15. Based on US EPEAT® registration according to IEEE 1680.1-2018 EPEAT®. EPEAT® status varies by country. Visit [www.epeat.net](http://www.epeat.net) for more information.
16. HP Services are sold separately. HP Services are governed by the applicable HP terms and conditions of service provided or indicated to Customer at the time of purchase. Customer may have additional statutory rights according to applicable local laws, and such rights are not in any way affected by the HP terms and conditions of service or the HP Limited Warranty provided with your HP Product.
18. HP Manageability Integration Kit can be downloaded from <http://www.hp.com/go/clientmanagement> and requires Microsoft Endpoint Manager.
20. HP Sure Sense is available on select HP PCs and is not available with Windows 10 Home.
21. HP Sure Click requires Windows 10 and higher. See [https://bit.ly/2PrLT6A\\_SureClick](https://bit.ly/2PrLT6A_SureClick) for complete details.
22. HP BIOSphere Gen6 requires Windows 10 and is available on select HP Pro and Elite PCs. Features may vary depending on the platform and configurations.
23. HP Sure Start Gen7 is available on select HP PCs and requires Windows 10 or 11.
25. HP Sure Run Gen5 is available on select HP PCs and requires Windows 10 or higher.
27. HP Sure Recover Gen5 with Embedded Reimaging is an optional feature which requires Windows 10 and higher must be configured at purchase. You must back up important files, data, photos, videos, etc. before use to avoid loss of data. Network based recovery using Wi-Fi is only available on PCs with Intel Wi-Fi Module.
30. HP Sure Click Enterprise is sold separately and requires Windows 8 or 10 and Microsoft Internet Explorer, Google Chrome, Chromium or Firefox are supported. Supported attachments include Microsoft Office (Word, Excel, PowerPoint) and PDF files, when Microsoft Office or Adobe Acrobat are installed.
32. Wireless access point and Internet service required and sold separately. Availability of public wireless access points limited. Wi-Fi 6 (802.11ax) is backwards compatible with prior 802.11 specs.
33. Intel vPro® requires Windows 10 Pro 64 bit or higher, a vPro supported processor, vPro enabled chipset, vPro enabled wired LAN and/or Wi-Fi 6E WLAN and TPM 2.0. Some functionality requires additional 3rd party software in order to run. Features of vPro® Essentials and Enterprise vary. See <http://intel.com/vpro>.
34. For storage drives, GB = 1 billion bytes. TB = 1 trillion bytes. Actual formatted capacity is less. Up to 30 GB (for Windows) of disk is reserved for system recovery software.
41. Memory modules support data transfer rates up to 5600/MTs requires selected Intel Core 14th Gen i5, i7 or i9 CPUs. Memory configuration without selected CPUs support data transfer rates up to 4800 MT/s. Actual data rate is determined by the system's configured processor. See processor specifications for supported memory data rate. All memory slots are customer accessible / upgradeable.

© Copyright 2024 HP Development Company, L.P. The information contained herein is subject to change without notice. The only warranties for HP products and services are set forth in the express warranty statements accompanying such products and services. Nothing herein should be construed as constituting an additional warranty. HP shall not be liable for technical or editorial errors or omissions contained herein.

Intel, Intel Core, Intel vPro and Intel Optane are trademarks of Intel Corporation or its subsidiaries in the U.S. and/or other countries. Thunderbolt is a trademark of Intel Corporation or its subsidiaries in the U.S. and/or other countries. Bluetooth® is a trademark owned by its proprietor and used by HP Inc. under license. USB Type-C® and USB-C® are registered trademarks of USB Implementers Forum. DisplayPort™ and the DisplayPort™ logo are trademarks owned by the Video Electronics Standards Association (VESA) in the United States and other countries. Wi-Fi® is a registered trademark of Wi-Fi Alliance®.

