

NOTES:

1. INSTALLATION SHALL COMPLY WITH ALL APPLICABLE NATIONAL, STATE AND LOCAL ELECTRICAL REGULATIONS.
2. REFER TO PRODUCT DOCUMENTATION FOR ADDITIONAL DETAILS PRIOR TO INSTALLATION AND SITE PREPARATION WORK.
- △ 3. IN AREAS WHERE SEISMIC PROTECTION IS REQUIRED, FOLLOW THE INSTRUCTIONS IN GVMANCHORING-SA DRAWING.
- △ 4. FOR INSTALLATION ON RAISED FLOOR, FOLLOW THE INSTRUCTIONS IN GVMANCHORING-RF DRAWING

THIS DRAWING AND SPECIFICATIONS HEREIN ARE THE PROPERTY OF SCHNEIDER ELECTRIC AND SHALL NOT BE COPIED, REPRODUCED OR USED IN WHOLE OR IN PART, AS THE BASIS FOR THE MANUFACTURE OR SALE OF ITEMS WITHOUT WRITTEN PERMISSION FROM SCHNEIDER ELECTRIC. THIS DRAWING IS BASED UPON LATEST AVAILABLE INFORMATION AND IS SUBJECT TO CHANGE WITHOUT NOTICE.



TITLE: Galaxy VM
 UPS 200kVA - SINGLE MODULE
 INPUT: 400V, 3PH, 40-70Hz
 OUTPUT: 400V, 3PH, 50/60Hz
 ISOMETRIC VIEWS

DWG NO: GVMSB200KHS

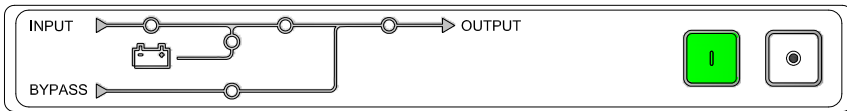
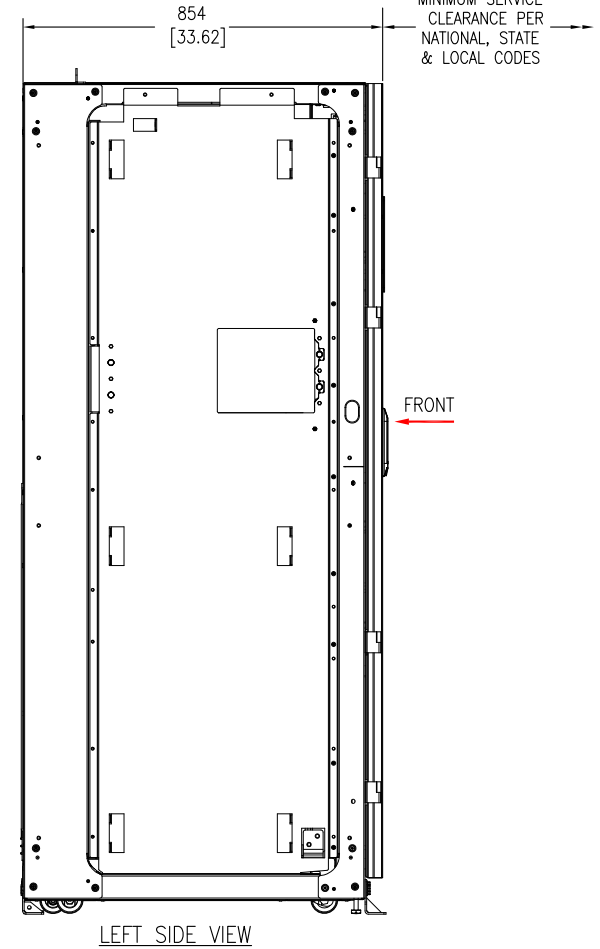
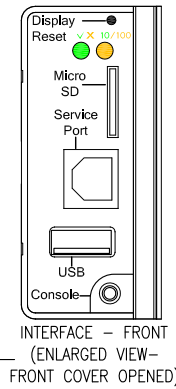
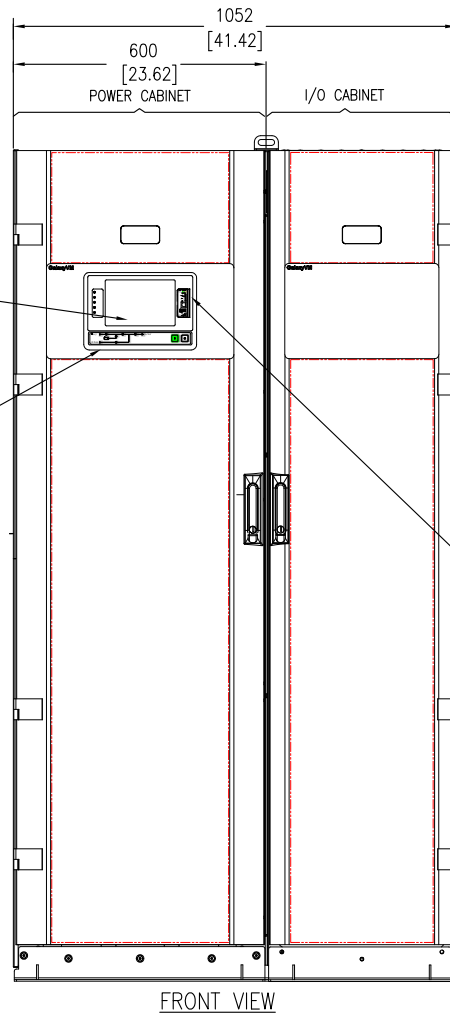
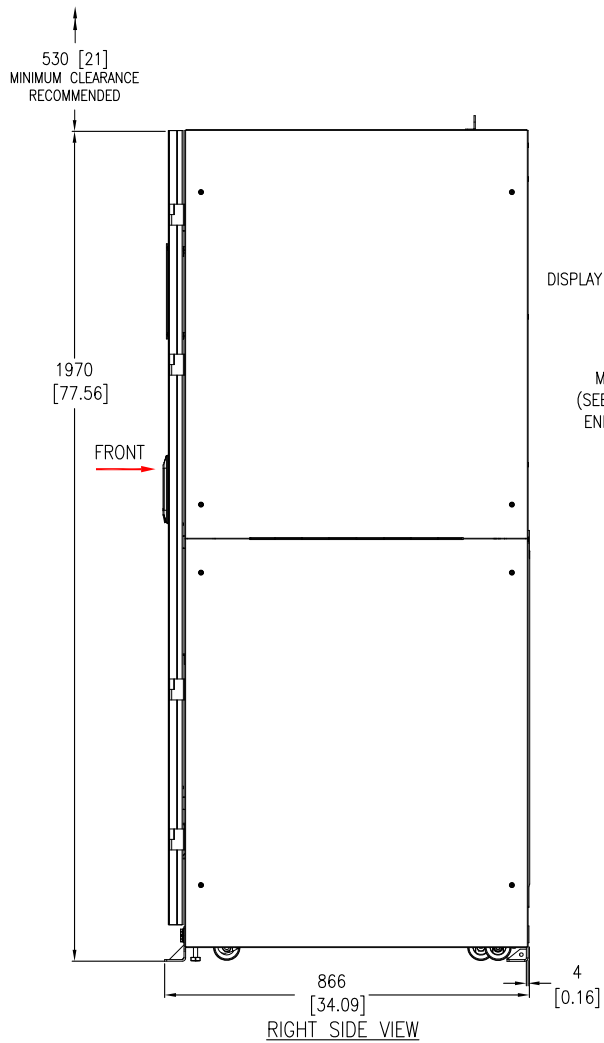
REV: 1

DRAWN: JAYAPRAKASH 16-APR-15

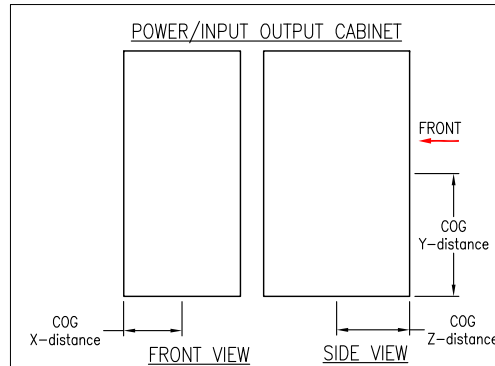
FIRST ANGLE PROJECTION

ENGINEER: NR/WZ/MP/CA/TA 16-APR-15

APPROVED: CS/SM/HD/LS/MG/MW 16-APR-15



- NOTES:**
- INSTALLATION SHALL COMPLY WITH ALL APPLICABLE NATIONAL, STATE AND LOCAL ELECTRICAL REGULATIONS.
 - REFER TO PRODUCT DOCUMENTATION FOR ADDITIONAL DETAILS PRIOR TO INSTALLATION AND SITE PREPARATION WORK.
 - ALL DIMENSIONS ARE IN MILLIMETERS [INCHES].
 - A MINIMUM CLEARANCE OF 800mm [32 Inches] IS REQUIRED FOR FRONT ACCESS AND SERVICE.
 - ALL DIMENSIONS EXCLUDES SCREW PROJECTIONS OUTSIDE THE ENCLOSURE.
 - THE WEIGHT OF THE UNIT IS AS BELOW:
 I/O CABINET: 230 kg [506 lb].
 POWER CABINET: 494 kg [1087 lb].
 UPS: 724 kg [1593 lb].
 - OPERATING TEMPERATURE: 0°C TO 40°C [32°F TO 104°F]
 - PROTECTION CLASS: IP20 (IP23 OPTIONAL)
 - COLOUR: RAL 9003 WHITE.
 - THIS INFORMATION PROVIDES APPROXIMATE CENTER OF GRAVITY CALCULATION.
 - DOOR SWING: FREELY ROTATES BY 180°.
 - CABLE ENTRY IS FROM TOP OR BOTTOM OF THE UNIT.



△ 4

MINIMUM SERVICE CLEARANCE PER NATIONAL, STATE & LOCAL CODES

△ 10

CENTER OF GRAVITY

Cabinet	Center of Gravity in mm [Inches]		
	X-Distance	Y-Distance	Z-Distance
Power Cabinet	300 [11.81]	950 [37.40]	379 [14.92]
I/O Cabinet	200 [7.87]	800 [31.49]	300 [11.81]

THIS DRAWING AND SPECIFICATIONS HEREIN ARE THE PROPERTY OF SCHNEIDER ELECTRIC AND SHALL NOT BE COPIED, REPRODUCED OR USED IN WHOLE OR IN PART, AS THE BASIS FOR THE MANUFACTURE OR SALE OF ITEMS WITHOUT WRITTEN PERMISSION FROM SCHNEIDER ELECTRIC. THIS DRAWING IS BASED UPON LATEST AVAILABLE INFORMATION AND IS SUBJECT TO CHANGE WITHOUT NOTICE.



TITLE: Galaxy VM
 UPS 200kVA - SINGLE MODULE
 INPUT: 400V, 3PH, 40-70Hz
 OUTPUT: 400V, 3PH, 50/60Hz
 GENERAL ARRANGEMENT

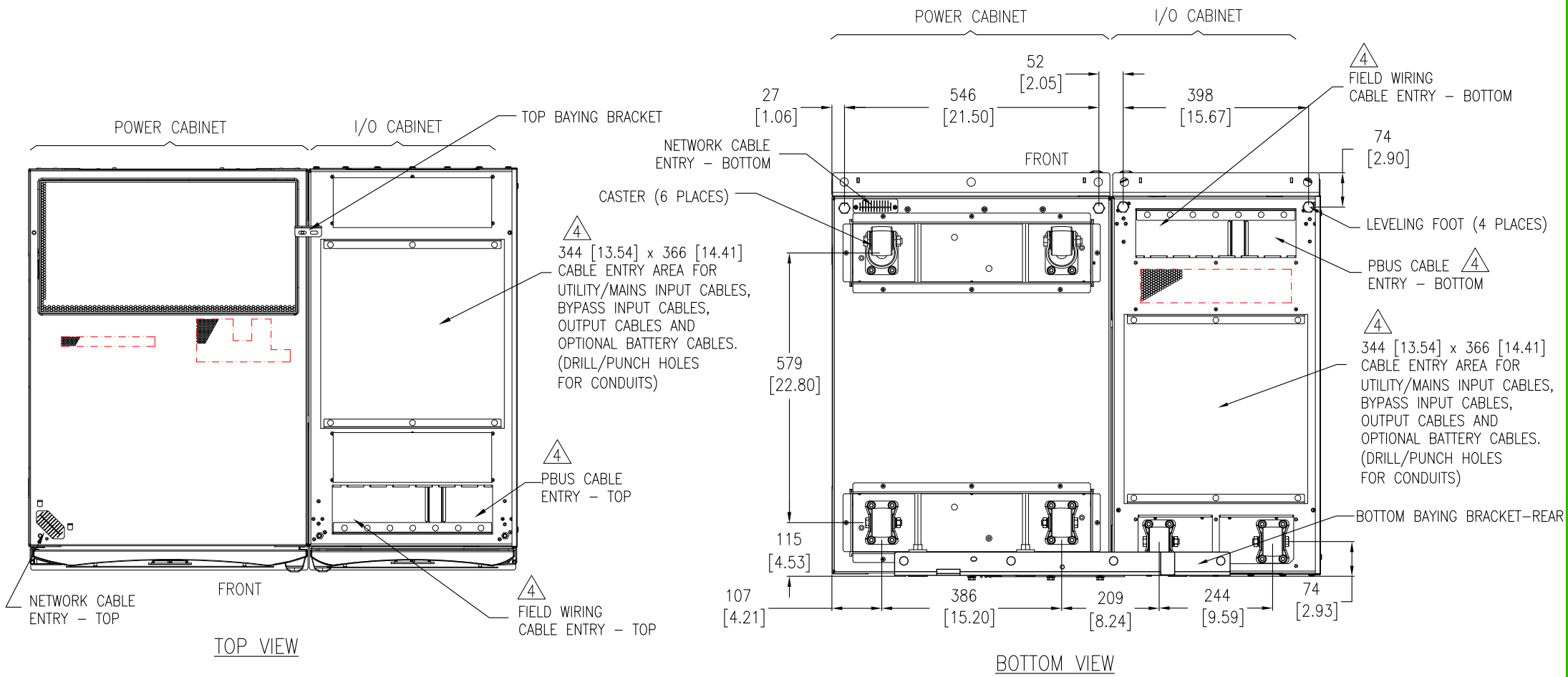
DWG NO: GVMSB200KHS **REV.** 1

DRAWN: JAYAPRAKASH 16-APR-15 **FIRST ANGLE PROJECTION**

ENGINEER: NR/WZ/MP/CA/TA 16-APR-15

APPROVED: CS/SM/HD/LS/MG/MW 16-APR-15

PROJECT: SUBMITTAL DRAWINGS SHEET 2 OF 9

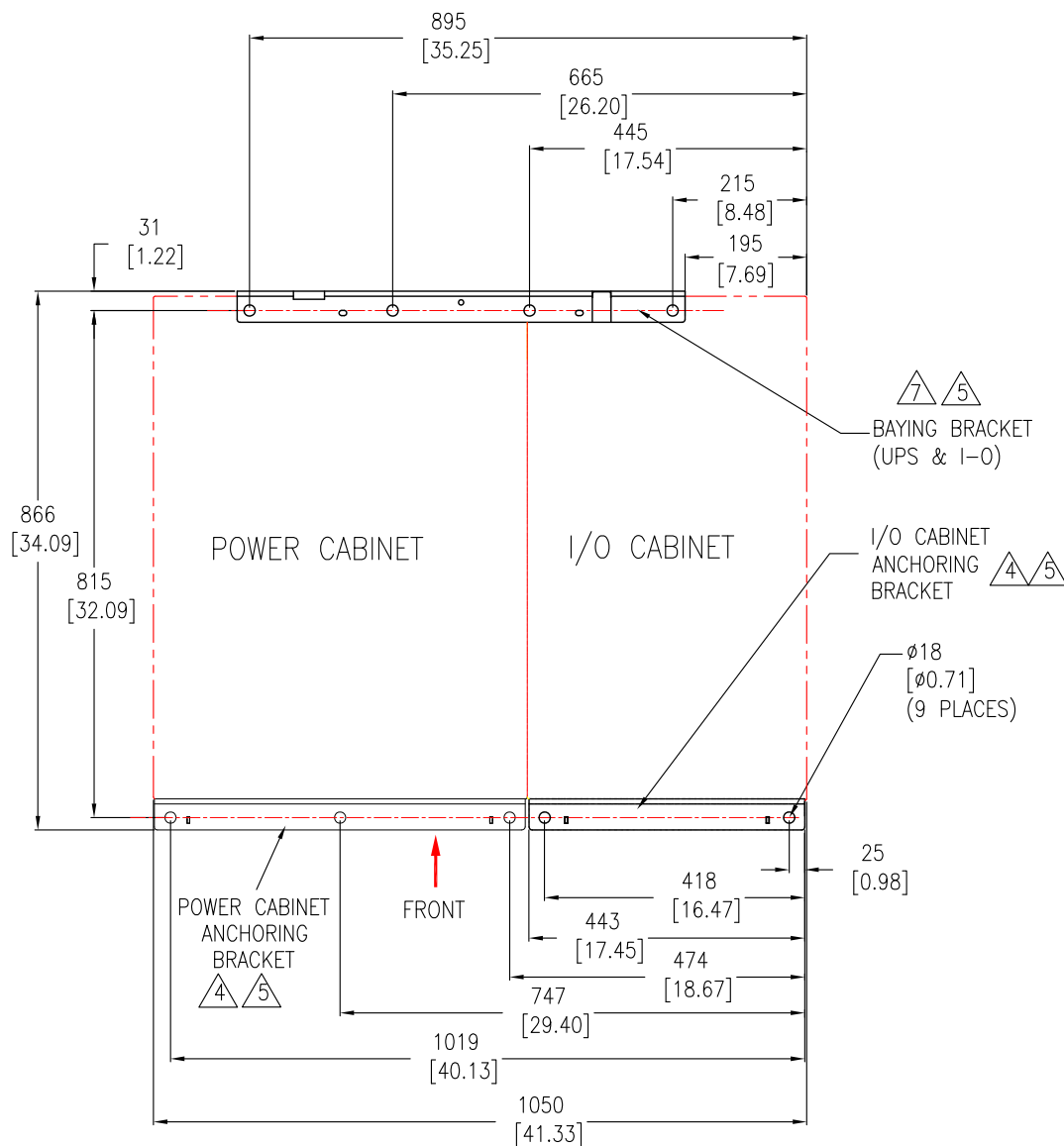


- NOTES:**
1. INSTALLATION SHALL COMPLY WITH ALL APPLICABLE NATIONAL, STATE AND LOCAL ELECTRICAL REGULATIONS.
 2. REFER TO PRODUCT DOCUMENTATION FOR ADDITIONAL DETAILS PRIOR TO INSTALLATION AND SITE PREPARATION WORK.
 3. ALL DIMENSIONS ARE IN MILLIMETERS [INCHES].
 - △ 4. DRILL/PUNCH HOLES IN PLATE. REMOVE PLATE FROM CABINET BEFORE DRILLING/PUNCHING.

THIS DRAWING AND SPECIFICATIONS HEREIN ARE THE PROPERTY OF SCHNEIDER ELECTRIC AND SHALL NOT BE COPIED, REPRODUCED OR USED IN WHOLE OR IN PART, AS THE BASIS FOR THE MANUFACTURE OR SALE OF ITEMS WITHOUT WRITTEN PERMISSION FROM SCHNEIDER ELECTRIC. THIS DRAWING IS BASED UPON LATEST AVAILABLE INFORMATION AND IS SUBJECT TO CHANGE WITHOUT NOTICE.



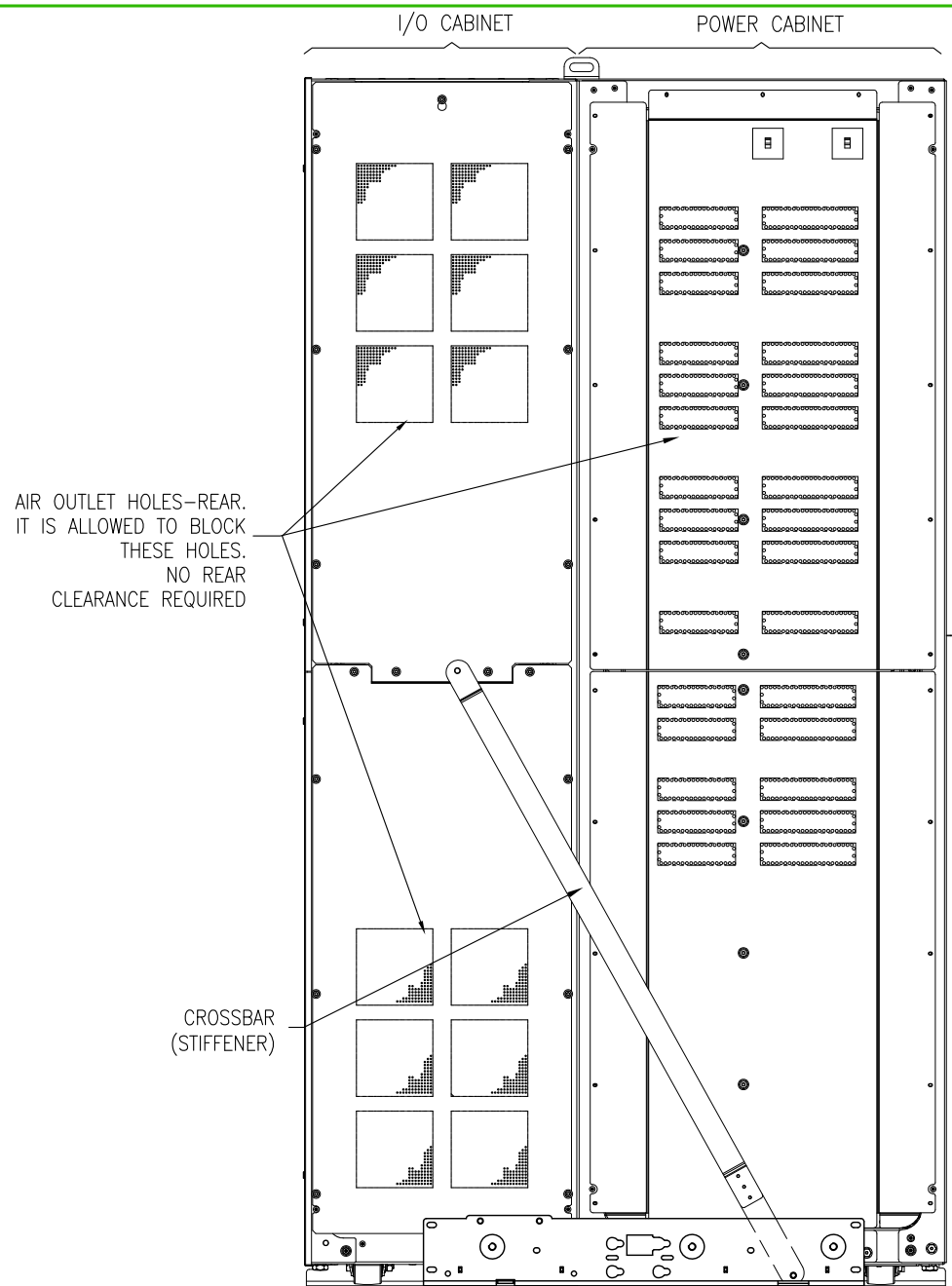
TITLE:	Galaxy VM UPS 200kVA - SINGLE MODULE INPUT: 400V, 3PH, 40-70Hz OUTPUT: 400V, 3PH, 50/60Hz TOP AND BOTTOM VIEWS	DWG NO:	GVMSB200KHS	REV:	2
PROJECT:	SUBMITTAL DRAWINGS	DRAWN:	JAYAPRAKASH	08-JAN-18	FIRST ANGLE PROJECTION
SHEET	3 OF 9	ENGINEER:	NR/WZ/MP/CA/TA	08-JAN-18	
		APPROVED:	CG/SM/HD/LS/MG/MW	08-JAN-18	



TOP VIEW
MOUNTING HOLE LOCATIONS
FOR ANCHORING BRACKETS

NOTES:

1. INSTALLATION SHALL COMPLY WITH ALL APPLICABLE NATIONAL, STATE AND LOCAL ELECTRICAL REGULATIONS.
2. REFER TO PRODUCT DOCUMENTATION FOR ADDITIONAL DETAILS PRIOR TO INSTALLATION AND SITE PREPARATION WORK.
3. ALL DIMENSIONS ARE IN MILLIMETERS [INCHES].
- △4. FIXATION OF ANCHORING BRACKETS IN FRONT IS OPTIONAL IN NON-SEISMIC LOCATIONS.
- △5. IN AREAS WHERE SEISMIC PROTECTION IS REQUIRED, FOLLOW THE INSTRUCTIONS IN GVMANCHORING-SA DRAWING. FLOOR ANCHORING BOLTS ARE NOT SUPPLIED.
6. FOR INSTALLATION ON RAISED FLOOR, FOLLOW THE INSTRUCTIONS IN GVMANCHORING-RF DRAWING.
- △7. USE THE BAYING BRACKET THAT WAS ATTACHED TO THE REAR PALLET OF I/O CABINET FOR ANCHORING THE UNIT. REAR BAYING BRACKET MUST BE BOLTED TO THE FLOOR.

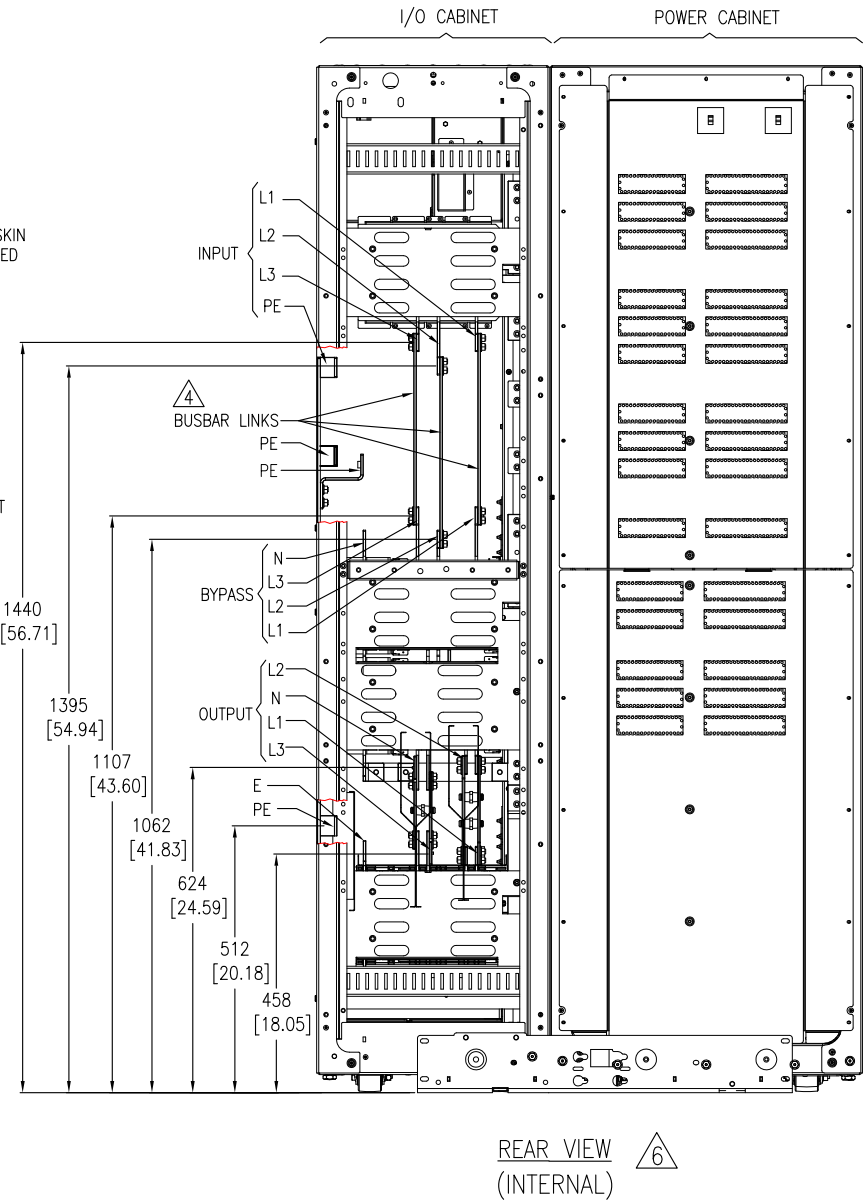
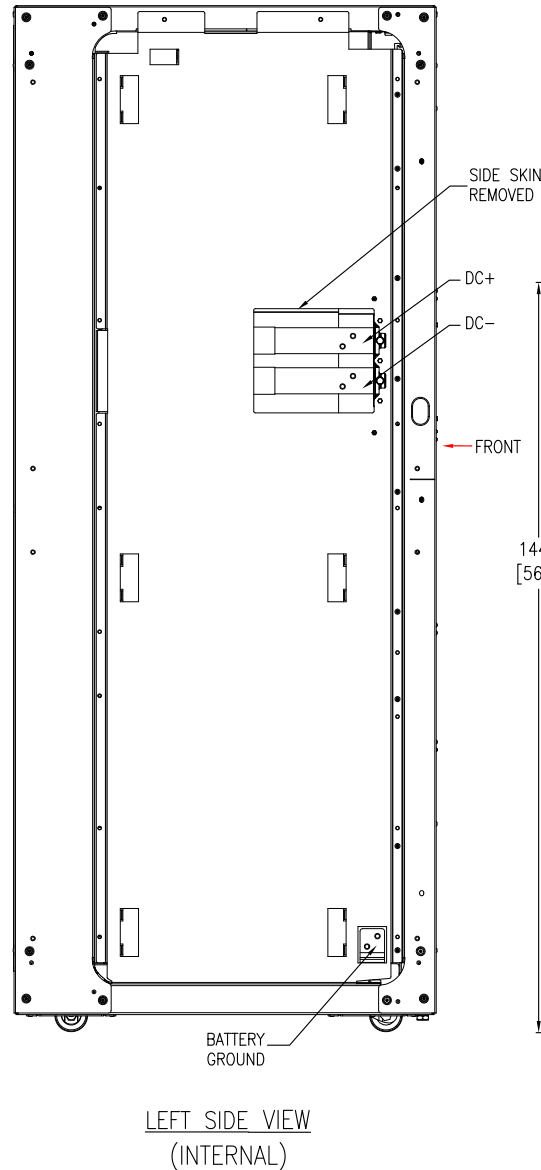
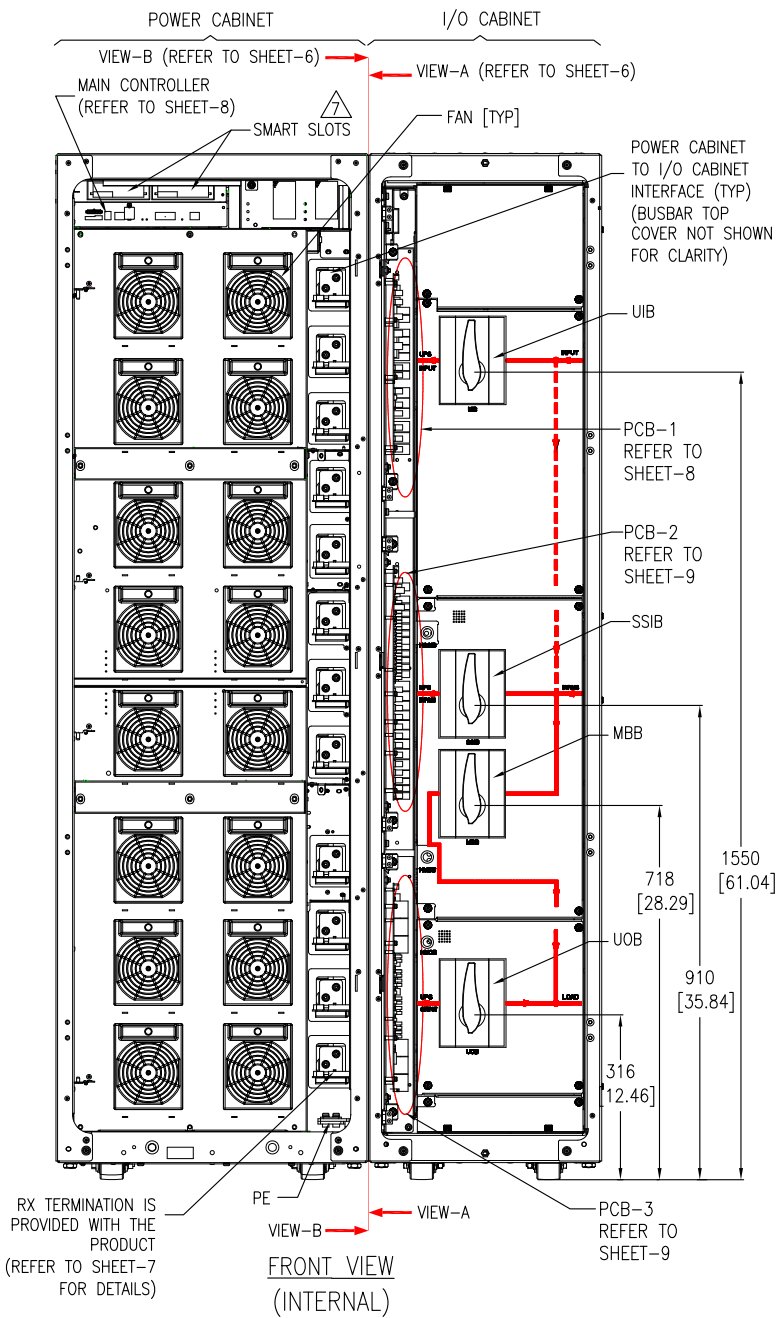


REAR VIEW
(WITH CROSSBAR AND ANCHORING BRACKET)

THIS DRAWING AND SPECIFICATIONS HEREIN ARE THE PROPERTY OF SCHNEIDER ELECTRIC AND SHALL NOT BE COPIED, REPRODUCED OR USED IN WHOLE OR IN PART, AS THE BASIS FOR THE MANUFACTURE OR SALE OF ITEMS WITHOUT WRITTEN PERMISSION FROM SCHNEIDER ELECTRIC. THIS DRAWING IS BASED UPON LATEST AVAILABLE INFORMATION AND IS SUBJECT TO CHANGE WITHOUT NOTICE.



TITLE: Galaxy VM SYSTEM BYPASS PANEL	DWG NO: GVMSB200KHS	REV: 1
INPUT: 400V, 3PH, 40-70Hz	DRAWN: JAYAPRAKASH	16-APR-15
OUTPUT: 400V, 3PH, 50/60Hz	ENGINEER: NR/WZ/MP/CA/TA	16-APR-15
ANCHORING DETAILS & REAR VIEW	APPROVED: CS/SH/HD/LS/MG/MW	16-APR-15
PROJECT: SUBMITTAL DRAWINGS SHEET 4 OF 9		FIRST ANGLE PROJECTION



NOTES:

1. INSTALLATION SHALL COMPLY WITH ALL APPLICABLE NATIONAL, STATE AND LOCAL ELECTRICAL REGULATIONS.
2. REFER TO PRODUCT DOCUMENTATION FOR ADDITIONAL DETAILS PRIOR TO INSTALLATION AND SITE PREPARATION WORK.
3. ALL DIMENSIONS ARE IN MILLIMETERS [INCHES].
- △ 4. BUSBAR LINKS ARE APPLICABLE FOR SINGLE MAINS SYSTEM ONLY. (REMOVE FOR DUAL MAINS)
5. SOME STRUCTURAL DETAILS HAVE BEEN OMITTED FOR THE PURPOSE OF CLARITY.
- △ 6. FRONT SERVICE ACCESS ONLY. NO REAR ACCESS REQUIRED FOR SERVICE.
- △ 7. NETWORK MANAGEMENT CARD IS OPTIONAL AND TO BE ORDERED SEPARATELY. THE RECOMMENDED NETWORK MANAGEMENT CARDS ARE: AP9630/AP9631/AP9635.

THIS DRAWING AND SPECIFICATIONS HEREIN ARE THE PROPERTY OF SCHNEIDER ELECTRIC AND SHALL NOT BE COPIED, REPRODUCED OR USED IN WHOLE OR IN PART, AS THE BASIS FOR THE MANUFACTURE OR SALE OF ITEMS WITHOUT WRITTEN PERMISSION FROM SCHNEIDER ELECTRIC. THIS DRAWING IS BASED UPON LATEST AVAILABLE INFORMATION AND IS SUBJECT TO CHANGE WITHOUT NOTICE.

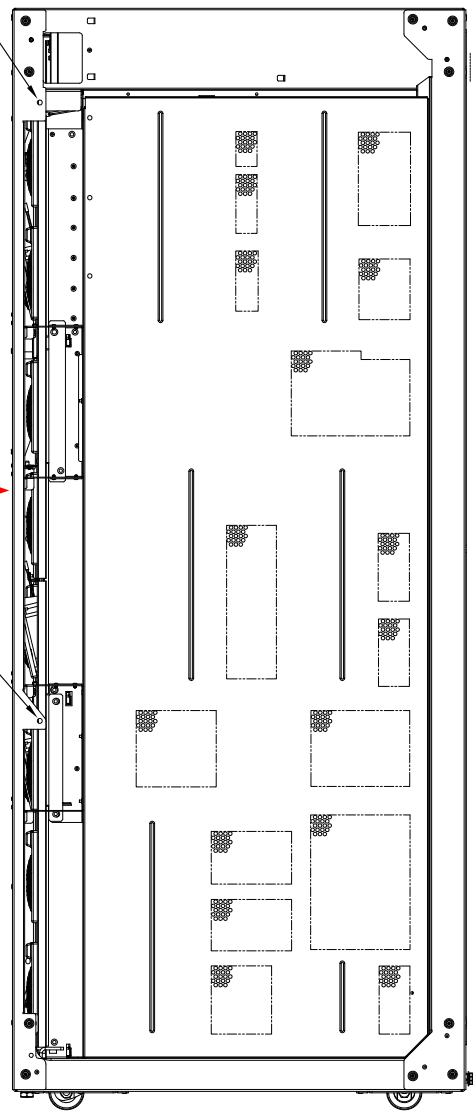


TITLE:	Galaxy VM UPS 200kVA - SINGLE MODULE INPUT: 400V, 3PH, 40-70Hz OUTPUT: 400V, 3PH, 50/60Hz INTERNAL VIEWS-1	DWG NO:	GVMSB200KHS	REV.	1
PROJECT:	SUBMITTAL DRAWINGS	DRAWN:	JAYAPRAKASH	16-APR-15	FIRST ANGLE PROJECTION
	SHEET 5 OF 9	ENGINEER:	NR/WZ/MP/CA/TA	16-APR-15	
		APPROVED:	CS/SM/HD/LS/MG/MW	16-APR-15	

FIX THE CABINETS TOGETHER HERE USING M8 SCREW.

FIX THE CABINETS TOGETHER HERE USING M8 SCREW.

FRONT →



VIEW-A
POWER CABINET

PE

PE

FIX THE CABINETS TOGETHER HERE USING M8 SCREW.

I/O CABINET INTERFACE TERMINAL (TYP)

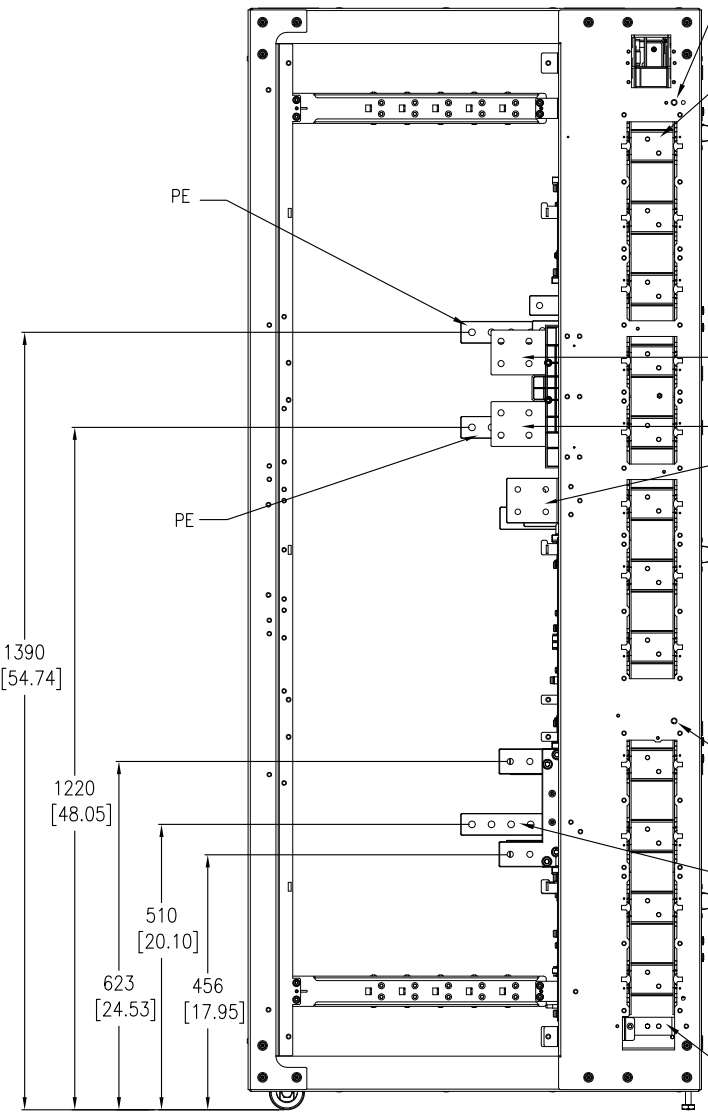
← FRONT

DC+ }
DC- }
PE }

FIX THE CABINET TOGETHER HERE USING M8 SCREW

PE

INTERCONNECTING PE BUSBAR TO POWER CABINET



VIEW-B
INPUT/OUTPUT FRAME

1390 [54.74]

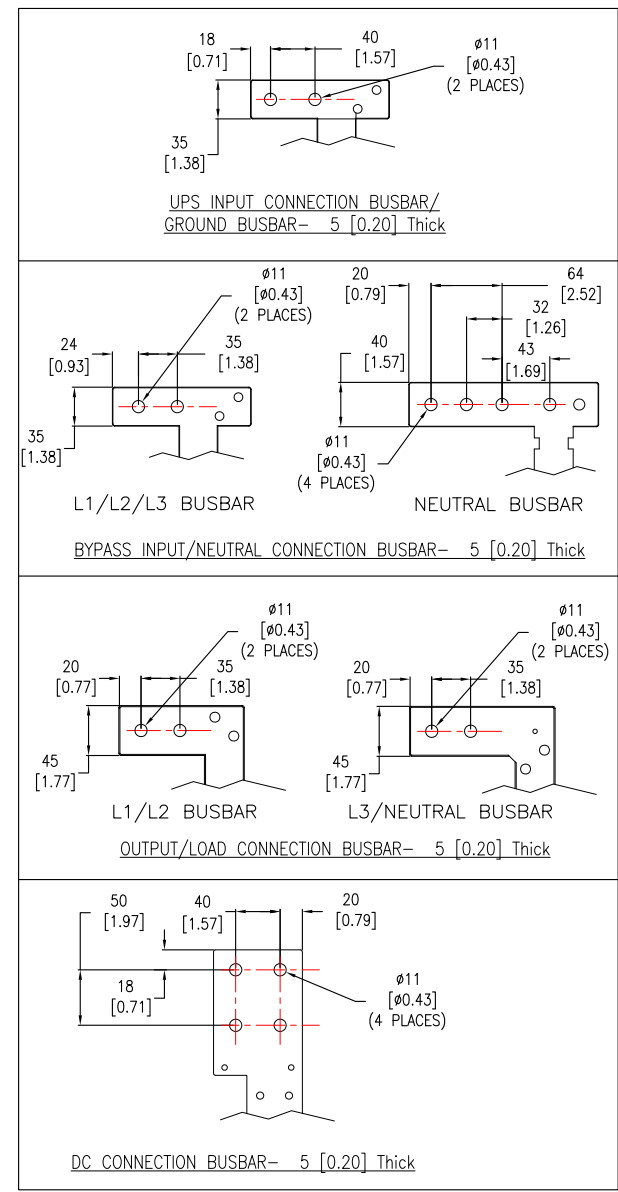
1220 [48.05]

510 [20.10]

623 [24.53]

456 [17.95]

BUSBAR DETAILS



- NOTES:
1. INSTALLATION SHALL COMPLY WITH ALL APPLICABLE NATIONAL, STATE AND LOCAL ELECTRICAL REGULATIONS.
 2. REFER TO PRODUCT DOCUMENTATION FOR ADDITIONAL DETAILS PRIOR TO INSTALLATION AND SITE PREPARATION WORK.
 3. ALL DIMENSIONS ARE IN MILLIMETERS [INCHES].
 4. SOME STRUCTURAL DETAILS HAVE BEEN OMITTED FOR THE PURPOSE OF CLARITY.
- △5. APPLICABLE FOR SYSTEMS WITH REMOTE BATTERIES OR BATTERY BREAKER ENCLOSURE ONLY.

THIS DRAWING AND SPECIFICATIONS HEREIN ARE THE PROPERTY OF SCHNEIDER ELECTRIC AND SHALL NOT BE COPIED, REPRODUCED OR USED IN WHOLE OR IN PART, AS THE BASIS FOR THE MANUFACTURE OR SALE OF ITEMS WITHOUT WRITTEN PERMISSION FROM SCHNEIDER ELECTRIC. THIS DRAWING IS BASED UPON LATEST AVAILABLE INFORMATION AND IS SUBJECT TO CHANGE WITHOUT NOTICE.

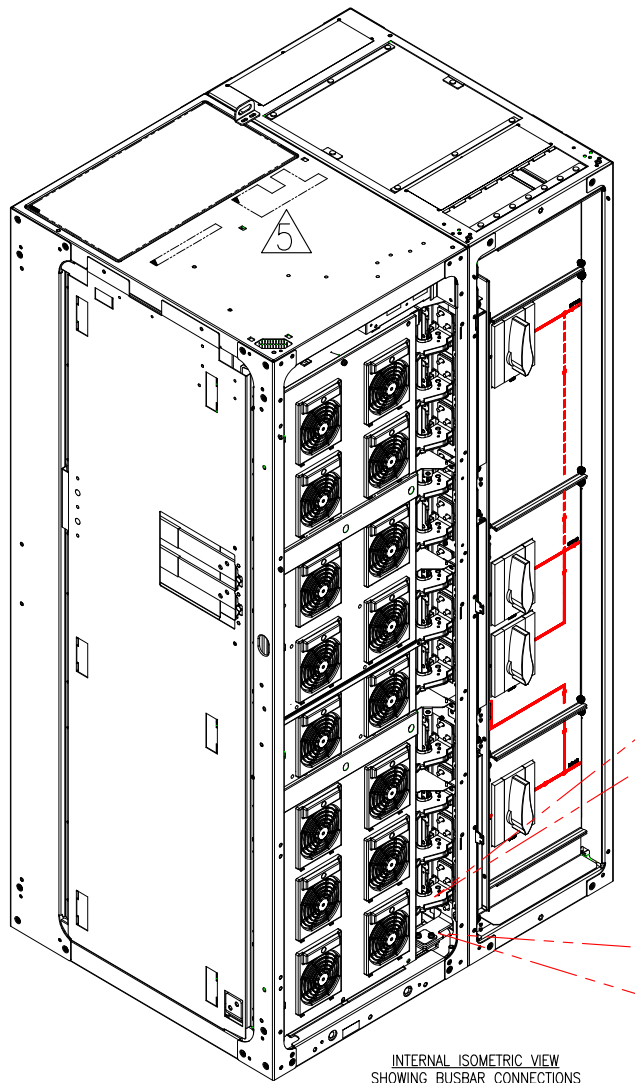


TITLE: Galaxy VM
UPS 200kVA - SINGLE MODULE
INPUT: 400V, 3PH, 40-70Hz
OUTPUT: 400V, 3PH, 50/60Hz
INTERNAL VIEWS & BUSBAR DETAILS

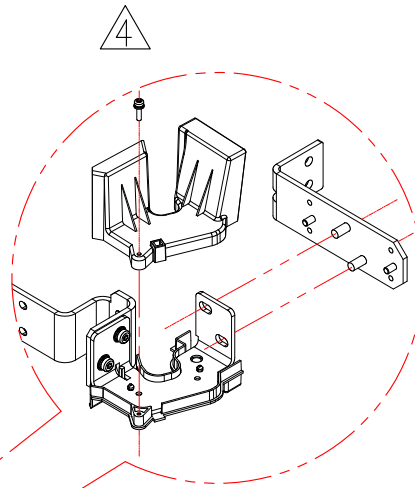
PROJECT: SUBMITTAL DRAWINGS SHEET 6 OF 9

DWG NO: GVMSB200KHS
DRAWN: JAYAPRAKASH
ENGINEER: NR/WZ/MP/CA/TA
APPROVED: cs/sm/hd/l5/mg/mw

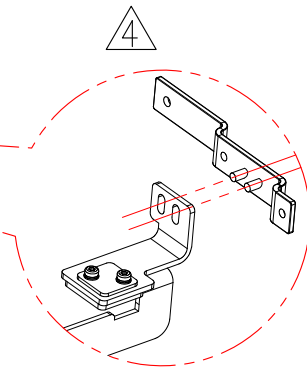
REV. 1
16-APR-15
16-APR-15
16-APR-15
FIRST ANGLE PROJECTION



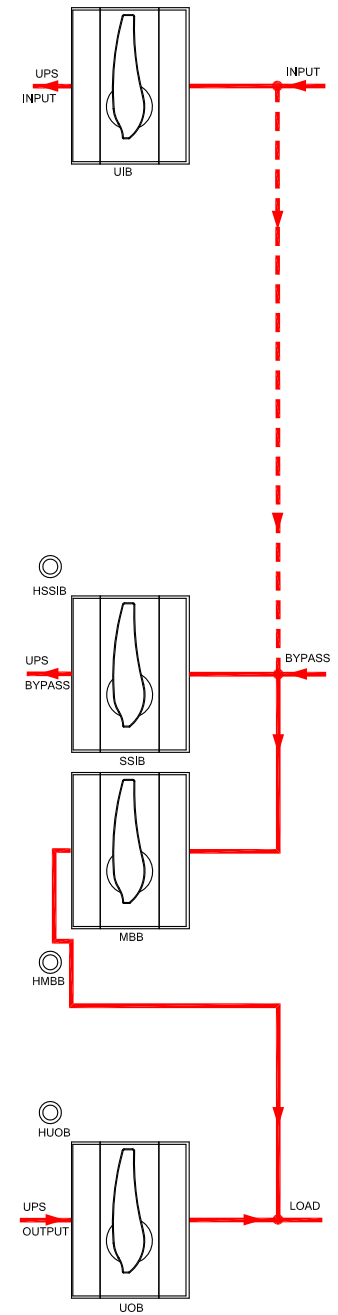
INTERNAL ISOMETRIC VIEW
SHOWING BUSBAR CONNECTIONS
(BUSBAR TOP COVER NOT SHOWN FOR CLARITY)



INTERCONNECTION BUSBAR DETAILS
(ENLARGED VIEW)



INTERCONNECTION GROUND BUSBAR DETAILS
(ENLARGED VIEW)



FLOW DIAGRAM

NOTES:

1. INSTALLATION SHALL COMPLY WITH ALL APPLICABLE NATIONAL, STATE AND LOCAL ELECTRICAL REGULATIONS.
2. REFER TO PRODUCT DOCUMENTATION FOR ADDITIONAL DETAILS PRIOR TO INSTALLATION AND SITE PREPARATION WORK.
3. SOME STRUCTURAL DETAILS HAVE BEEN OMITTED FOR THE PURPOSE OF CLARITY.

△4. ALL THE INTERFACE PARTS ARE SUPPLIED WITH THE UNIT.

△5. SCHNEIDER ELECTRIC RECOMMENDS:

- THAT THE POWER CABINET IS TO BE INSTALLED AS LATE AS POSSIBLE TO AVOID CONSTRUCTION DEBRIS AND DUST ACCUMULATING INSIDE IT.
- THAT THE ROOM IS TO BE PROPERLY CLEANED AFTER THE COMPLETION OF CONSTRUCTION WORK AND BEFORE THE POWER CABINET IS INSTALLED.
- VACUUM CLEANING OF THE I/O CABINET AFTER CABLE INSTALLATION.

THIS DRAWING AND SPECIFICATIONS HEREIN ARE THE PROPERTY OF SCHNEIDER ELECTRIC AND SHALL NOT BE COPIED, REPRODUCED OR USED IN WHOLE OR IN PART, AS THE BASIS FOR THE MANUFACTURE OR SALE OF ITEMS WITHOUT WRITTEN PERMISSION FROM SCHNEIDER ELECTRIC. THIS DRAWING IS BASED UPON LATEST AVAILABLE INFORMATION AND IS SUBJECT TO CHANGE WITHOUT NOTICE.



TITLE: Galaxy VM
UPS 200kVA - SINGLE MODULE
INPUT: 400V, 3PH, 40-70Hz
OUTPUT: 400V, 3PH, 50/60Hz
INTERCONNECTION BUSBAR DETAILS

DWG NO: GVMSB200KHS

REV. 1

DRAWN: JAYAPRAKASH 16-APR-15

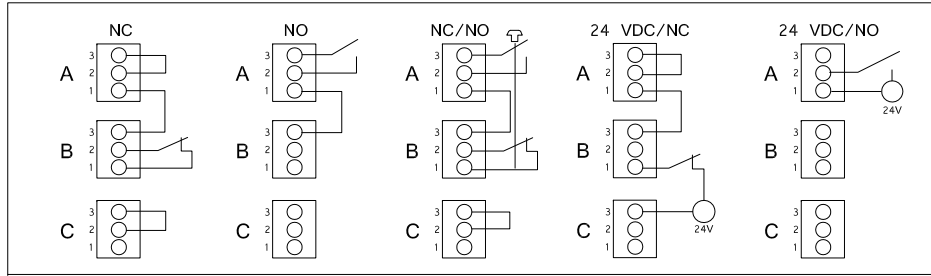
FIRST ANGLE PROJECTION

ENGINEER: NR/WZ/MP/CA/TA 16-APR-15

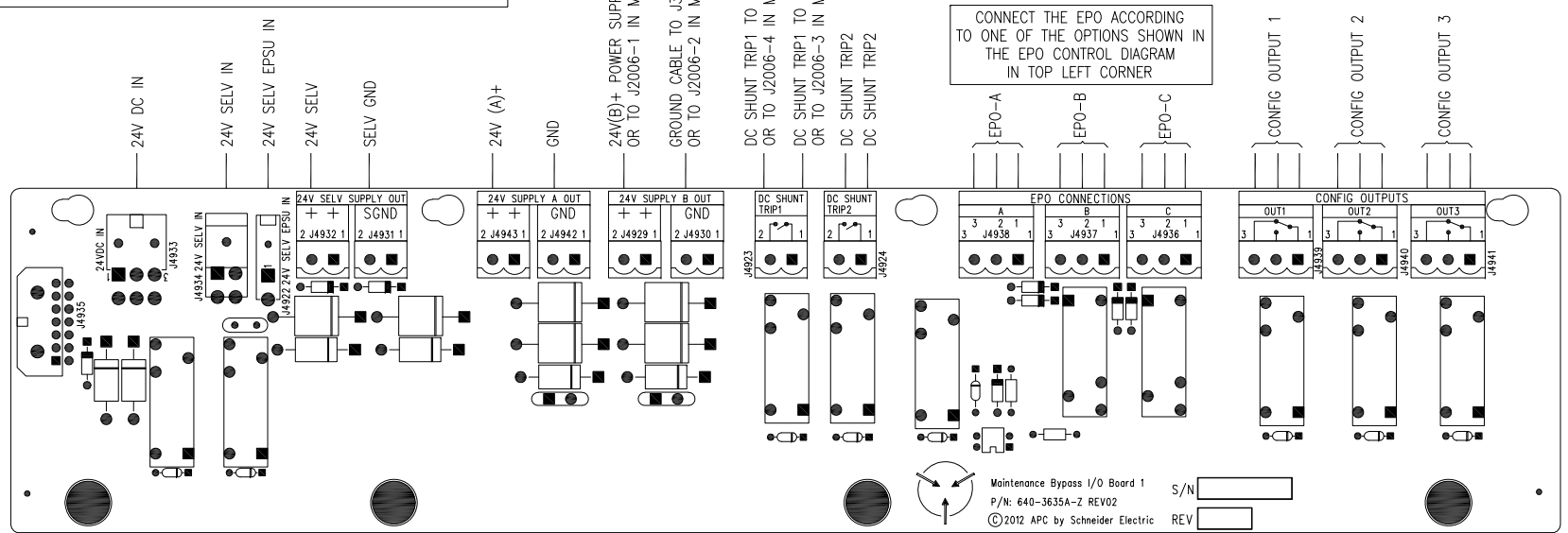
APPROVED: CS/SM/HD/LS/MG/MW 16-APR-15

PROJECT: SUBMITTAL DRAWINGS SHEET 7 OF 9

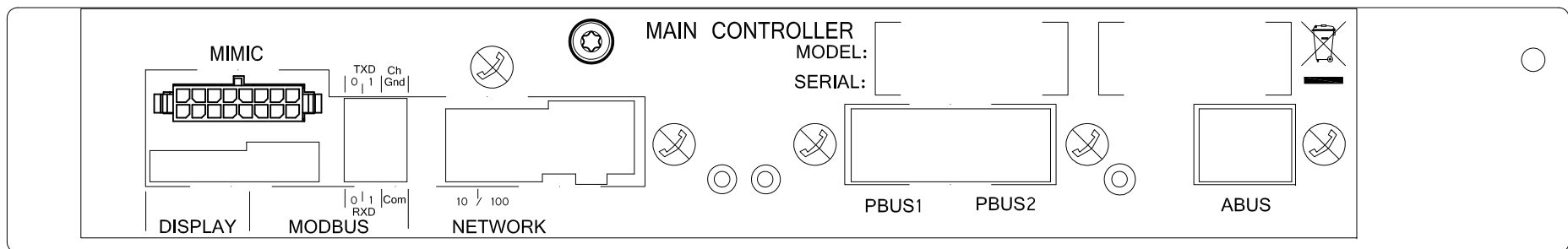
EPO CONTROL DIAGRAM



MAINTENANCE BYPASS I/O PCB-1 DETAILS



MAIN CONTROLLER



- NOTES:**
1. INSTALLATION SHALL COMPLY WITH ALL APPLICABLE NATIONAL, STATE AND LOCAL ELECTRICAL REGULATIONS.
 2. REFER TO PRODUCT DOCUMENTATION FOR ADDITIONAL DETAILS PRIOR TO INSTALLATION AND SITE PREPARATION WORK.

THIS DRAWING AND SPECIFICATIONS HEREIN ARE THE PROPERTY OF SCHNEIDER ELECTRIC AND SHALL NOT BE COPIED, REPRODUCED OR USED IN WHOLE OR IN PART, AS THE BASIS FOR THE MANUFACTURE OR SALE OF ITEMS WITHOUT WRITTEN PERMISSION FROM SCHNEIDER ELECTRIC. THIS DRAWING IS BASED UPON LATEST AVAILABLE INFORMATION AND IS SUBJECT TO CHANGE WITHOUT NOTICE.



TITLE: Galaxy VM
 UPS 200kVA - SINGLE MODULE
 INPUT: 400V, 3PH, 40-70Hz
 OUTPUT: 400V, 3PH, 50/60Hz
 MBP I/O BOARD-1 & MAIN CONTROLLER

DWG NO: GVMSB200KHS
 DRAWN: JAYAPRAKASH
 ENGINEER: NR/WZ/MP/CA/TA
 APPROVED: CS/SM/HD/LS/MG/MW

REV: 2
 16-APR-15
 16-APR-15
 16-APR-15
 ANGLE PROJECTION
 N.A

