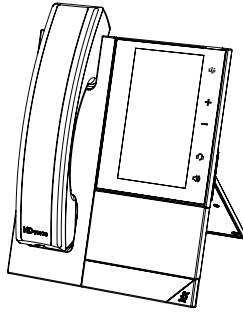
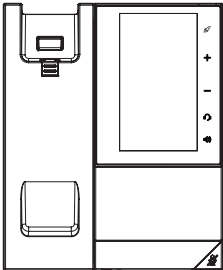


Poly CCX 505 Business Media Phone

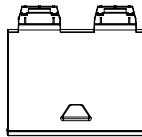


Package Contents

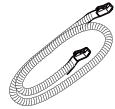
Poly CCX 505 Phone Console



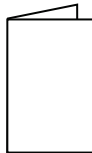
Stand



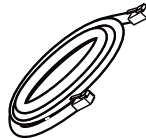
Handset

Handset
Cord

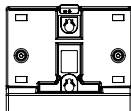
Setup Sheet



Network Cable

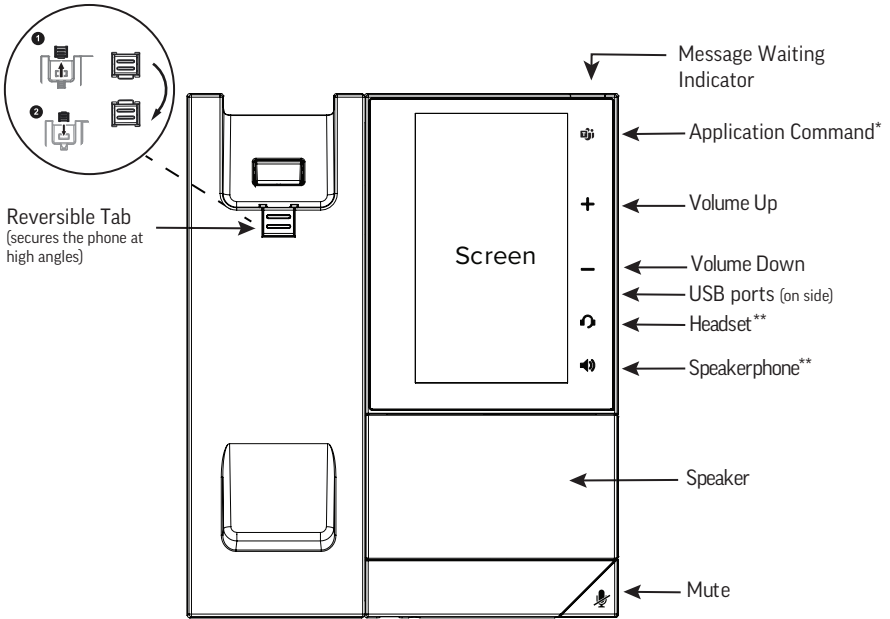


Optional Accessories

AC Power Adapter
(varies by region)

Wallmount

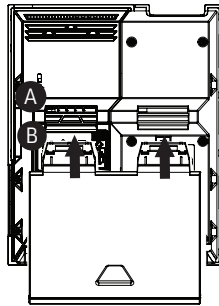
Features



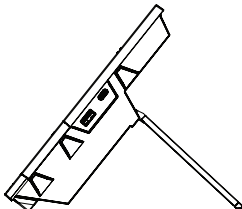
*Icon displays only when the phone is powered on and the service is available. Icon may vary.

** Icon displays when the phone is powered on.

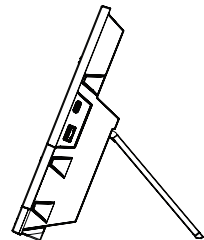
Connect Desktop Stand



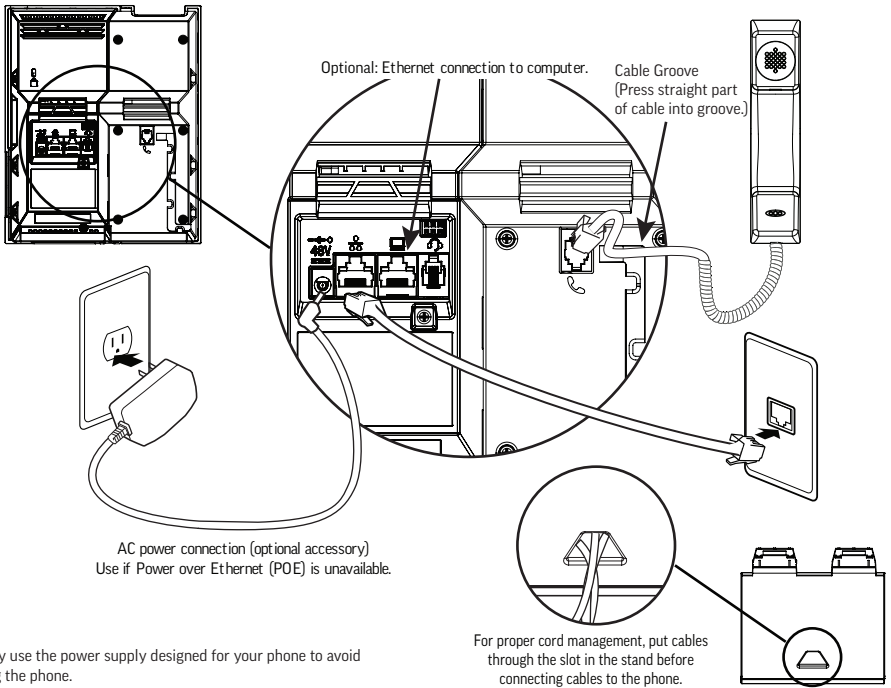
A



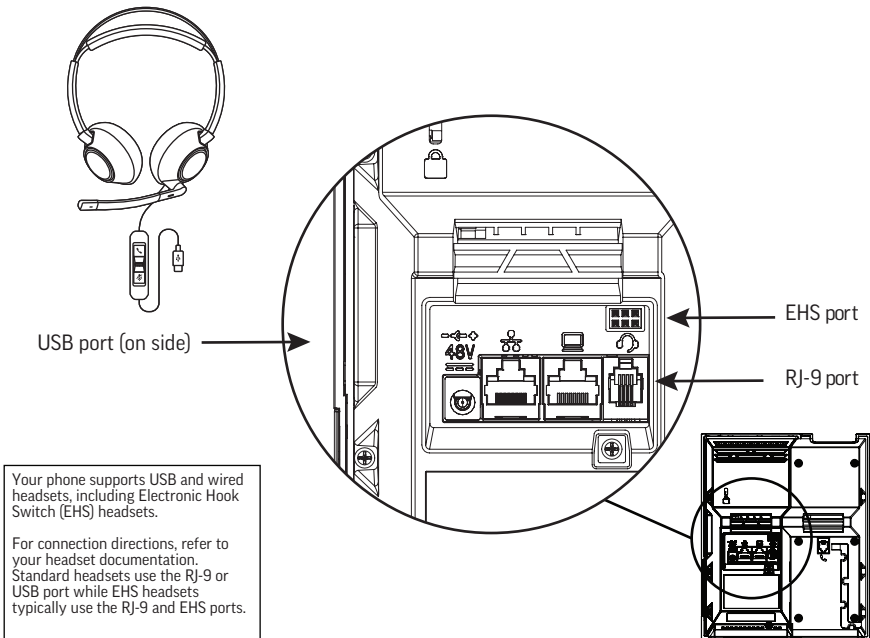
B



Connect Cables



Connect Optional Headset





Hereby, HP declares that the radio equipment RMN/ 型號 / 型号 : CCX 505 is in compliance with Directive 2014/53/EU. The full text of the EU Declaration of Conformity is available at the following Internet address: www.hp.eu/certificates (search with RMN).

UK only: Hereby, HP declares that the radio equipment RMN/ 型號 / 型号 : CCX 505 is in compliance with the relevant statutory requirements. The full text of the Declaration of Conformity is available at the following Internet address: www.hp.eu/certificates (search with RMN).

CCX 505

Frequency Range	Maximum Transmit Power	Source
2402 MHz–2480 MHz	8.26 dBm	Bluetooth™ EDR
2402 MHz–2480 MHz	6.51 dBm	Bluetooth™ LE
2412 MHz–2472 MHz	16.30 dBm	2.4G WLAN
5180 MHz–5240 MHz	16.57 dBm	5G Band 1 WLAN
5260 MHz–5320 MHz	16.67 dBm	5G Band 2 WLAN
5500 MHz–5700 MHz	16.62 dBm	5G Band 3 WLAN

HP Inc UK Ltd, Regulatory Enquiries, Earley West, 300 Thames Valley Park Drive, Reading, RG6 1PT

HP REG 23010, 08028 Barcelona, Spain

ENERGY STAR®:



Backlight intensity and timeout can be adjusted in basic user settings menu. By default, after the phone is idle for 40 seconds, the backlight dims. The backlight automatically turns on with any phone activity.



support.hp.com/poly

Poly CCX 505



Translations of this Setup Sheet are available at support.hp.com/poly.

انڈا ٺروكڙمڊل تاغل ل لڙصفنم تادن تس م يف ٺيل اتا ل تادن تس م ل ا ٺم جرت م ت تس .

de Übersetzungen dieser Einrichtungsanleitung sind unter support.hp.com/poly verfügbar.

es Las traducciones de esta guía de instalación están disponibles en support.hp.com/poly.

fr Des traductions de cette Fiche de configuration sont disponibles à l'adresse support.hp.com/poly.

he .support.hp.com/poly תרגומים של גיליון ההתקנה זמינים בכתובת

id Terjemahan Lembar Penyetelan ini tersedia di support.hp.com/poly.

it Le traduzioni di questo foglio di installazione sono disponibili all'indirizzo support.hp.com/poly.

ja このセットアップシートの各国語版は、support.hp.com/poly から入手できます。

ko 이 설치 안내서의 번역본은 support.hp.com/poly에서 확인할 수 있습니다.

ku .support.hp.com/poly وه گێڕان بۆ ئەم پەرەى زێڤهسته بهردهسته له

pt As traduções desta Folha de configuração estão disponíveis no site support.hp.com/poly.

ru Переводы этой монтажной схемы доступны по адресу: support.hp.com/poly.

sr Prevodi ovog priručnika za podešavanje dostupni su na support.hp.com/poly.

tr Bu Kurulum Sayfasının çevirileri support.hp.com/poly adresinde mevcuttur.

zh-cn 此安装说明书的翻译版本见 support.hp.com/poly。

zh-tw 此安裝說明書的翻譯版本可在 support.hp.com/poly 取得。

© 2023 Poly. All trademarks are the property of their respective owners.

Contact Information:

Contact your authorized reseller for assistance.

www.hp.com

HP Inc., 1501 Page Mill Road, Palo Alto, CA 94304



1725-87399-023A 09.23

RMN/型號/型号: CCX 505