

NDA-U-PSU2 PSU, 230VAC, for NDA-7100-PEN/PENF



- ▶ Aluminum enclosure rated to IP66 and NEMA 4X to prevent dust and water ingress
- ▶ IK10 impact rating ensures enclosure integrity

Bosch offers a series of stand-alone power supply units that provide VAC power to AUTODOME 7100i cameras for applications without PoE. Each unit has a cover door that provides IP66/NEMA 4X ingress protection and meets power and electrical safety requirements in extreme environmental conditions. The unique design and the IK10 rating protect the power supply units from vandalism and tampering events.

These units can be mounted directly to a wall or other flat surface. Optional pole and corner mounting accessories are also available, allowing you to tailor your AUTODOME installation to your specific requirements. Multiple cable gland/conduit entry points protect cables and simplify installation. The NDA-U-PSU2 includes a 230 to 24VAC transformer.

EN 61000-3-3: 2013
EN 50121:2006/AC:2008 (railway applied)
FCC 47 Part 15 B

RoHS	Complies with EN IEC 63000:2018
Product Safety	Complies with EN, IEC, UL Standards 62368-1: 2014 and 60950-22:2016

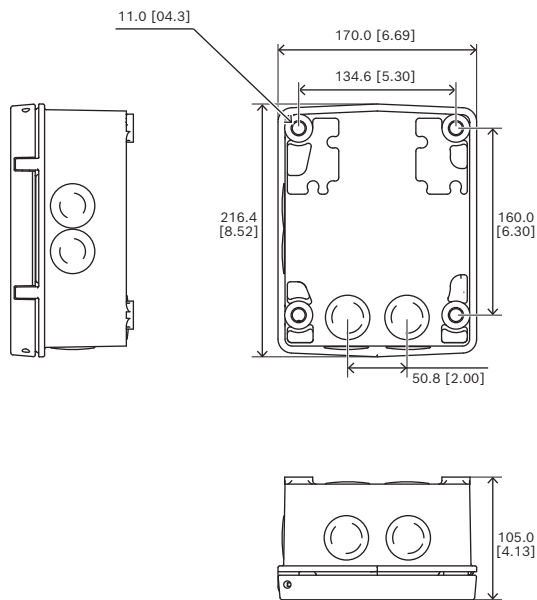
Region	Regulatory compliance/quality marks	
Great Britain	UKCA	VG4-A-PSU VG4-A-PA NDA-U-PA
Europe	CE	VG4-A-PSU VG4-A-PA NDA-U-PA

Regulatory information

For a full list of all related certifications/standards, refer to the Product Test Reports, available on the online catalog, on the Documents tab of the product page for your device. If the document is unavailable on the product page, contact your sales representative.

Electromagnetic Compatibility (EMC)	Complies with FCC Part 15, ICES-003 Issue 7 (for Canada only), and CE regulations, including latest versions of: EN 50130-4: 2011 EN 55032: 2015 + a11: 2020 (Class A) EN 61000-3-2: 2014
-------------------------------------	--

Installation/configuration notes



Parts included

Quantity	Component
1	NDA-U-PSU2 power supply box
1	Quick installation guide
1	Safety and security information manual

Technical specifications

Model	Input	Output Rating	Input Fuses	Output Fuses	
				Camera	Heater
NDA-U-PSU2	230 VAC, 50/60 Hz	24 V @ 96 VA	5.0 A	2.0 A	3.15 A

Mechanical

Certifications	UL, CE, Plenum Rated
Dimensions (W x H x D), all models ²	170.0 x 216.4 x 105.0 mm (6.69 x 8.52 x 4.13 in.)
Construction Material	Cast Aluminum
Standard Color	White (RAL9003)

Represented by:

Europe, Middle East, Africa:
 Bosch Security Systems B.V.
 P.O. Box 80002
 5600 JB Eindhoven, The Netherlands
 Phone: +31 40 2577 284
www.boschsecurity.com/xc/en/contact/
www.boschsecurity.com

Germany:
 Bosch Sicherheitssysteme GmbH
 Robert-Bosch-Ring 5
 85630 Grasbrunn
 Tel.: +49 (0)89 6290 0
 Fax: +49 (0)89 6290 1020
de.securitysystems@bosch.com
www.boschsecurity.com

North America:
 Bosch Security Systems, LLC
 130 Perinton Parkway
 Fairport, New York, 14450, USA
 Phone: +1 800 289 0096
 Fax: +1 585 223 9180
onlinehelp@us.bosch.com
www.boschsecurity.com

Asia-Pacific:
 Robert Bosch (SEA) Pte Ltd, Security Systems
 11 Bishan Street 21
 Singapore 573943
 Phone: +65 6571 2808
 Fax: +65 6571 2699
www.boschsecurity.com/xc/en/contact/
www.boschsecurity.com

Standard Finish	Powder coated, sand finish
-----------------	----------------------------

2. Dimensions for power supplies include the cover.

Environmental

Operating Temperature -60°C to 55°C (-76°F to 131°F)

Humidity 0% to 100%, condensing

Environmental Protection IP66, IK 10 (IEC 62262), NEMA 4X

Ordering information

NDA-U-PSU2 PSU, 230VAC, for NDA-7100-PEN/PENF

Power supply unit with 230 VAC transformer, IK10

Order number **NDA-U-PSU2 | F.01U.411.641**

Accessories

NDA-U-PMAL Pole mount adapter large

Universal pole mount adapter, white; large

Order number **NDA-U-PMAL | F.01U.324.944**

NDA-U-CMT Corner mount adapter

Universal corner mount, white

Order number **NDA-U-CMT | F.01U.324.946**

NDA-7100-PEN Pendant arm for AUTODOME 7100i

Pendant arm mount for AUTODOME 7100i and

AUTODOME 7100i IR cameras

Order number **NDA-7100-PEN | F.01U.389.329**

NDA-7100-PENF Pendant arm fiber AUTODOME 7100i

Pendant arm with direct fiber connection for

AUTODOME 7100i and AUTODOME 7100i IR cameras

Order number **NDA-7100-PENF | F.01U.395.439**