

Transportation

PRODUCT CATALOGUE

Over 75 Years of Experience

Panorama Antennas is a privately owned family business, now in its third generation, and leading designer and manufacturer of antennas for wireless communication. Established in London in 1947, Panorama started life as a manufacturer of consumer products and buoyed by huge demand in 1952, began manufacturing TV components and antennas. With the transistor radio trend of the 1960s, Panorama's expert knowledge swiftly led the company into the manufacturing of communication antennas.

Throughout the 1970s and 80s, Panorama evolved to become the first specialised communication antenna manufacturer in the UK, developing a range of cellular antennas to coincide with the launch of the mobile phone network in Britain. 1990 was a year of huge change as Panorama found itself revolutionising cellular glass mount antenna technology, filing a patent application for the first ever solid state coupling circuit. Through creating a new benchmark for quality in the production of components and leading technology development, Panorama has grown side by side with the cellular telecommunications industry.





Today Panorama produces antennas for the world's leading communication companies and has grown to include over 100 staff in 5 international sales offices, as well as operating 4 fully owned subsidiaries. Manufacturing, design and development remain located in London less than a mile from the original factory. Our network of international sales representatives means that all customers get the attention and advice they require, providing local support on a global scale.

Antennas for Next Generation

Panorama's constant cutting-edge research ensures that our antennas meet the demands of the very latest technology. With over 75 years experience in delivering world-class antenna products, Panorama's current product range reflects our unparalleled expertise in providing high-quality performance antennas.



Content

	Mobility Antenna Solutions	5-10
	IoT Antenna Solutions	12-16
	Wifi Antenna Solutions	18-20
	Accessories Antenna Solutions	22-23

A red double-decker bus is parked on a city street in front of a modern glass skyscraper. The bus has "Hackney Wick 26" on its destination sign and "2514" on its side. The building behind it is a tall, glass-clad structure with a distinctive X-shaped steel frame. The sky is clear and blue. A white text box is overlaid on the image, containing the text "Mobility" and "Antenna Solutions".

Mobility

Antenna Solutions



Great White 5G



- 2x2 MiMo 5G/4G
- 617-960 / 1427-6000MHz
- Optional Integrated GPS/GNSS
- Up to 6x6 MiMo WiFi 2.4/5.0-7.2GHz
- ECE R118 Compliant Cables
- IP69K & IK10 Rated

The Great White 5G range provides effective 2x2 MiMo operation with excellent isolation and low correlation coefficient. Optional GPS/ GNSS module incorporates advanced filtering. Available in Black or White.

Part no.	MiMo 4G/5G	GPS/ GNSS	MiMo WiFi
LPMM-6-60	2x2		
LGMM-6-60	2x2	●	
LGMDM-6-60-24-58	2x2	●	2x2
LGMTM-6-60-24-58	2x2	●	3x3
LGMQM-6-60-24-58	2x2	●	4x4
LGMHM-6-60-24-58	2x2	●	6x6

*Part numbers refer to the white version only

**Antenna only part number shown above.

For antenna with full cable kit parts, contact your sales representative

MAKO® 5G Dome



- 4x4 MiMo 5G/4G
- 617-960 / 1427-6000MHz
- Optional Integrated GPS/GNSS
- Up to 6x6 MiMo WiFi 2.4/5.0-7.2GHz
- ECE R118 Compliant Cables
- IP69K & IK10 Rated

The Mako 5G dome range provides effective 4x4 MiMo operation with excellent isolation and low correlation coefficient. Optional GPS/ GNSS module incorporates advanced filtering. Available in Black or White.

Part no.	MiMo 4G/5G	GPS/ GNSS	MiMo WiFi
LPMM4-6-60	4x4		
LGMM4-6-60	4x4	●	
LGMDM4-6-60-24-58	4x4	●	2x2
LGMTM4-6-60-24-58	4x4	●	3x3
LGMQM4-6-60-24-58	4x4	●	4x4
LGMHM4-6-60-24-58	4x4	●	6x6

*Part numbers refer to the white version only

**Antenna only part number shown above.

For antenna with full cable kit parts, contact your sales representative



Heavy Duty MiMo Transit Antenna



- 2x2 MiMo 5G/4G LTE
- 698-960 / 1710-6000MHz
- Optional L1 or L1/L5 Band GPS/GNSS with surge arrestor
- Fully Rail Industry Certified
- IP69K rated
- EN50155, EN45545-2, EN50124-1

The TRNM[G]-7-60 2x2 MiMo antenna series is designed specifically for use on trains (under/ overground), trams and buses. Incorporating two DC grounded wideband elements for 698MHz to 6000MHz, the TRNM(G) range is versatile and future proof. The TRNM(G)-7-60 series is suitable for use with all Cellular 4G/5G bands and 2.4 / 5GHz WiFi.

Part no.	MiMo 4G/5G	GPS/ GNSS
TRNM-7-60-NJ	2x2	
TRNMG-7-60-NJ	2x2	•

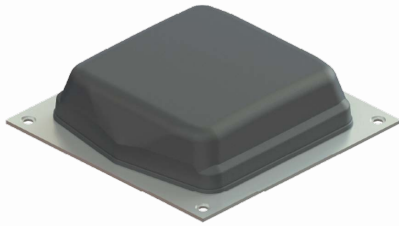
Heavy Duty SiSo Transit Antenna



- 5G/4G/3G/2G
- 698- 960/1710-6000MHz
- Optional L1 or L1/L5 Band GPS/GNSS with surge arrestor
- Fully rail industry certified
- IP69K rated
- EN50155, EN45545-2, EN50124-1

The TRNC[G] series antenna can be used for either Cellular or WiFi applications. It has been specifically designed to meet railway engineering standards and features a DC grounded radiating element. The antenna has a heavy duty cast aluminium base and is housed in a high impact, flame retardant radome moulded in Ultem which provides ingress protection to IP69K

Part no.	Cellular/ WiFi	GPS/ GNSS
TRNC-7-60	•	
TRNCG-7-60	•	•



4x4 MiMo 4G/5G Transit Antenna



- Low Profile Transit Antenna
- 4x4 MiMo 617-960/1427-6000MHz
- Up to 4x4 MiMo WiFi 6e
- Up to 2x GPS/GNSS L1 or L1/L5 band or 1x GPS/GNSS L1/L2/L5
- Meets Railway Standards EN50155, EN45545-2 and EN50124-1

The TRNM[X]4-6-60[-X] MiMo antenna series is designed specifically for use on trains (under/overground), trams and buses. Incorporating four wideband elements, covering 617MHz to 6000MHz the TRNM[X]4-6-60[-X] range is versatile and future proof.

Part no.	MiMo 4G/5G	GPS/ GNSS	WiFi
TRNMG4-6-60-Q	4x4	•	4x4
TRNMG4-6-60-T	4x4	•	3x3
TRNMG4-6-60-D	4x4	•	2x2
TRNMG4-6-60-S	4x4	•	SiSo
TRNMG4-6-60	4x4	•	
TRNM4-6-60	4x4		



The BAT Covert MiMo Antenna



- 2x2 MiMo 5G/4G
- 617-960 / 1427-6000MHz
- Up to 2x GPS/GNSS L1 or L1/L5 band or 1x GPS/GNSS L1/L2/L5
- Optional SiSo or 2x2 MiMo WiFi 5.0-7.2GHz
- ECE R118 Compliant Cables

The Panorama BAT range is an ideal 2x2 MiMo 4G/5G antenna for Covert installations with fall back capability to 3G/2G. It can also incorporate a GPS/GNSS antenna and Single or 2x2 MiMo dual band WiFi antenna(s).

Part no.	MiMo LTE	GPS/ GNSS	WiFi
BATM-7-60	2x2		
BATGM-7-60	2x2	•	
BATGM-7-60-S24-58	2x2	•	Siso
BATGM-7-60-24-58	2x2	•	2x2



The Fez 5G Antenna



- 5G/4G/3G/2G
- 617-960/1427-6000MHz SiSo element
- Optional 2x2 or 4x4 MiMo WiFi 6e
- Optional L1 or L1/L5 Band GPS/GNSS
- Ground plane independent
- Meets IK10, IP69K, ECE R118.03

The Fez 5G antenna series is a range of low profile antennas that features a wideband cellular element covering 617-6000MHz with option to include an active GPS/GNSS antenna and up to four dualband WiFi 6e elements all in a robust compact housing.

Part no.	4G/5G	GPS/ GNSS	MiMo WiFi
LPE-6-60	●		
LGE-6-60	●	●	
LGE-6-60-SW	●	●	Siso
LGE-6-60-DW	●	●	2x2
LGE-6-60-QW	●	●	4x4

*Antenna only part number shown above.
For antenna with full cable kit parts, contact your sales representative



Low Profile LTE Antenna



- 5G/4G/3G/2G
- 698-3800MHz
- Optional 2.4 / 5.0GHz WiFi
- Optional L1 or L1/L5 Band GPS/GNSS
- Ground plane independent
- Meets IK10, IP69K, UL94-V0, ECE R118.03

The LP-7-38 antenna series is a range of very low profile antennas incorporating a combination of wideband cellular element covering 4G/5G frequencies along with an optional active GPS/GNSS patch with 26dB LNA gain and an optional dual band WiFi element all in a robust compact housing.

Part no.	Cable & Connector
LP-7-38-ISP	1m (3') SMA Male
LP-7-38-3SP	3m (10') SMA Male
LP-7-38-IFAK	1m (3') FAKRA D
LG-7-38-ISP	1m (3') SMA Male
LG-7-38-3SP	3m (10') SMA Male
LG-7-38-24-58-ISP	1m (3') SMA Male
LG-7-38-24-58-3SP	3m (10') SMA Male

*WiFi cable has Reverse Polarity SMA



Low Profile Multi-function VHF Bus Antenna



- 2x2 MiMo 5G/4G LTE
- 698-6000MHz
- 2x2 MiMo WiFi 2.4/5.0GHz
- VHF (tuned to customer frequency requirements within range 136-208MHz) Integrated GPS/GNSS (L1 or L1/L2L5)
- Rugged, heavy duty design
- Ground plane independent
- Meets IK10, IP69K, UL94-V0, ECE R118.03

The LG[X][VAR]-7-60-[X]W features a wideband VHF antenna, 2x2 MiMo Cellular, 2x2 MiMo WiFi and GPS/GNSS. The antenna can be supplied with 1 or 2x 24mm (1") threaded mounting bushes.

Part no.	MiMo LTE	GPS/GNSS	MiMo WiFi	VHF
LG[X][VAR]-7-60-[X]W	2x2	●	2x2	●



Internal On-Glass Antenna

- Semi covert window mount antenna
- Install with no vehicle damage
- Flexible moulding to allow fitting to curved glass

The EF 'easy fit' antennas provide an effective low-visibility 'no-hole' solution.

With their secure but easy to fit adhesive pad mountings, the EF antenna provide a huge range of possibilities for the installer and is ideal for temporary installation in short-term use vehicles.

Part no.	Frequency (MHz)	Part no.	Frequency (MHz)
EF-S1	380-400	EF-W	470-512
EF-S2	410-430	EFBAD	698-960
EF-S3	380-420	EF-S5	806-870
EF-S4	450-470		



Internal LTE/GNSS Puck Antenna



- 4G/3G/2G LTE
- 698-2700MHz SiSo
- Integrated GPS/GNSS
- Windscreen or dashboard mount
- Adhesive pad fixing
- 'Either way up' mounting system

The GPSC series is a combined cellular/LTE + active GPS/GNSS antenna for internal or covert installation. This discrete antenna is an ideal solution for tracking or navigation systems and offers much improved performance over device embedded antennas.

Part no.	Cable & Connector
GPSC-7-27-3SP	3m (10') Male
GPSC-7-27-3FAKRA	

Stingray SiSo Internal Antenna



- Cellular, WiFi and GPS/GNSS included
- Dashboard or windshield mount
- Suitable for M3 category vehicles (Compliant with ECE R118.03)

This internal antenna offers a "3 in 1" solution ideal for telematics or other vehicle communications, where the antenna needs to be fitted discretely or for a "no hole" installation. The compact housing incorporates antennas for LTE / Cellular, Dual Band WiFi and GPS/GNSS. Meeting the requirements of UN ECE R118, the antenna is suitable for use in M3 Category vehicles (Transportation). The antenna housing is UV resistant and flame retardant, while the integrated coax cables are flame retardant, low smoke specification.

Part no.	Cable & Connector
GPSCO-7-27-24-58	3m (10') SMA Male
GPSCOF-7-27-24-58	3m (10') FAKRA



IoT

Antenna Solutions



EF-BC3G-26 EF-6-60



Internal SiSo Cellular Antenna



- 5G/4G/3G/2G
- 698-2700MHz
- 617-6000MHz (EF-6-60 Version)
- Simple adhesive pad fitment
- Can be fitted on glass or plastic panel

The EF antenna is a low cost single 5G/4G/3G/2G product that can be fitted on any non-conductive surface. It is typically fitted on a window and with correct spacing, a pair can be installed to provide a covert 2x2 MiMo antenna system.

Part no.	Cable & Connector
EF-BC3G-26-3SP	3m (10') SMA Male
EF-6-60-3FAKDJ	3m (10') FAKRA D Jack
EF-6-60-3SP	3m (10') SMA Male

Low Profile MiMo Cellular



**IP66
RATED**

- 2x2 MiMo 4G/5G
- 698-3800MHz
- Optional integrated GPS/GNSS antenna
- Robust and cost effective
- Magnetic version available
- Low profile and weatherproof housing

The LPAM / LGAM range has been designed to provide 2x2 MiMo LTE / Cellular antenna function for IOT and M2M applications. The compact, robust low-profile housing is weatherproof and contains two cellular LTE antenna elements with effective isolation. A magnetic mount version is also available.

Part no.	GPS/ GNSS	Magnetic Base	Cable & Connector
LPAM-BC3G-26-ISP			1m (3') SMA Male
LPAMM-BC3G-ISP		●	1m (3') SMA Male
LGAM-BC3G-26-ISP	●		1m (3') SMA Male
LGAMM-BC3G-26-ISP	●	●	1m (3') SMA Male
LPAM-BC3G-26-3SP			3m (10') SMA Male
LPAMM-BC3G-3SP		●	3m (10') SMA Male
LGAM-BC3G-26-3SP	●		3m (10') SMA Male
LGAMM-BC3G-26-3SP	●	●	3m (10') SMA Male



Multifunction MiMo Cellular



- 2x2 MiMo 4G/5G LTE 698-3800MHz
- 2x2 MiMo WiFi 2.4/5.0GHz
- 617-960 / 1427-6000MHz
- Optional L1 or L1/L5 Band GPS/GNSS
- Robust and cost effective solution
- Magnetic version available
- Low profile fin design

The LPAM / LGAM range has a compact housing and is ideal for vending machines, payment terminals and other M2M type applications. It can be fitted on a metal or plastic mounting panel. A magnetic mount version is also available.

Part no.	GPS/ GNSS	Magnetic Base	Cable
LPAM-7-27-24-58			3m (10')
LPAM-7-27-24-58-1S			1m (3')
LPAMM-7-27-24-58-1S		•	1m (3')
LPAMM-7-27-24-58-3		•	3m (10')
LGAM-7-27-24-58	•		3m (10')
LGAMM-7-27-24-58-1	•	•	1m (3')
LGAM-7-27-24-58-1S	•		1m (3')
LGAMM-7-27-24-58-3	•	•	3m (10')

*Antenna supplied with SMA Male (LTE & GNSS) and Reverse Polarity SMA (WiFi)

Low Profile MiMo Cellular



- Low Profile 2x2 MiMo Antenna for 4G/5G
- 617-960 / 1427-6000MHz
- Optional L1 or L1/L5 Band GPS/GNSS
- Optional up to 4x MiMo WiFi 2.4/5.0/7.2GHz
- Meets IP69K for ingress protection

The LP[G]AM[F]-6-60 platform has a 2x2 MiMo antenna function for 4G/5G (617-960/1427-6000MHz) and the option of 2x2, 3x3 or 4x4 MiMo dual-band WiFi, which supports WiFi 6E. An optional active antenna for GPS/GLONASS/Galileo/BeiDou can be included, with 26dB gain LNA and advanced filtering for LTE Band 13/14 operation.

Part no.	GPS/ GNSS	Magnetic Base	Cable
LPAM-7-27-24-58			3m (10')
LPAM-7-27-24-58-1S			1m (3')
LPAMM-7-27-24-58-1S		•	1m (3')
LPAMM-7-27-24-58-3		•	3m (10')
LGAM-7-27-24-58	•		3m (10')
LGAMM-7-27-24-58-1	•	•	1m (3')
LGAM-7-27-24-58-1S	•		1m (3')
LGAMM-7-27-24-58-3	•	•	3m (10')

*Antenna supplied with SMA Male (LTE & GNSS) and Reverse Polarity SMA (WiFi)



Low Profile Panel Mount Antenna



- Cost effective 2G/3G/4G/5G antenna
- 617-960 / 1710-6000MHz
- Integral ultra-low loss cable
- Robust, discrete design

The LPB-6-60 is supplied with integral CS29 ultra-low loss coaxial cable and is available with various length and connectors fitted. This antenna is an ideal omni-directional solution for use in industrial and domestic environments with cellular modems/ routers and IoT & M2M wireless connectivity applications.

Part no.	Cable & Connector
LPB-6-60-05SP	0.5m (1'6") SMA Male
LPB-6-60-1SP	1m (3') SMA Male
LPB-6-60-2SP	2m (6'6") SMA Male
LPB-6-60-5SP	5m (17') SMA Male



4G/5G Bracket Mount Antenna



- Cost Effective 2G/3G/4G/5G antenna
- 617-960 / 1710-6000MHz
- Wall or mast mount
- Integral ultra-low loss cable

The B4BE-6-60 antenna is a cost effective omni-directional multi-band antenna for 5G/4G/3G and 2G devices from 617-960/1710-6000MHz and is suitable for external or internal installation. The omni-directional radiation pattern allows easy placement of the antenna in an elevated position.

Part no.	Cable & Connector
B4BE-6-60-05SP	0.5m (1'6") SMA Male
B4BE-6-60-2SP	2m (6'6") SMA Male
B4BE-6-60-5SP	5m (17') SMA Male



4G/5G Magnetic Mount Antenna



- Magnetic mount for 'no hole' installation
- 617-960 / 1710-6000MHz range (LPBEM)
- Covers 5G/4G/3G/2G LTE

The LPBEM-6-60 is a new generation, high performance magnetic mount antenna that covers all global cellular & LTE frequencies.

The MAR-7-21 is a whip type compact magnetic cellular antenna for temporary mount use. It covers six of the main GSM/LTE bands supporting 2G, 3G and 4G technologies. The stylish flexible design of the antenna whip gives a discreet appearance and resistance to damage.

Part no.	Cable & Connector
LPBEM-6-60-2SP	2m (6'6") SMA Male
LPBEM-6-60-5SP	5m (17') SMA Male



Bracket Mount 2G/3G/4G Antenna



- Discrete Slim Profile
- 2G/3G/4G Functionality
- Ground Plane Independent

The Panorama B2BE-BC3G-26 is a low cost, but effective antenna solution for M2M and IoT applications and is suitable for use in challenging environments. The antenna covers 698-960/1710-2700MHz and the efficient element design ensures a high first time connection rate and an ongoing, robust communications link even in many low coverage areas.

Part no.	Cable & Connector
B2BE-BC3G-26-5SP	5m (17') SMA Male



4G/5G IoT SiSo Antenna



- High Performance SiSo IoT Antenna
- 698-960MHz & 1427-4200MHz
- Adhesive/Screw Mount (Panel Mount on request)
- Integral FR rated RG174 cable with SMA or FAKRA connector

The LPA[P] series is a high performance SiSo antenna for IoT applications, including ticket machines and destination boards. It covers all the main cellular bands up to 4200MHz, providing future proof function. The standard version has a flat base with adhesive and/or screw mounting with a panel mount version available on request. The integral RG174 cable is FRZH type and available with SMA or right angle FAKRA connector.

Part no.	GPS/ GNSS	Cable & Connector
LPA-7-42-2SP		2m (6.6') SMA Male
LPA-7-42-2RFDJ		2m (6.6') R/A FAKRA D*
LPAP-7-42-2SP		2m (6.6') SMA Male
LPAP-7-42-2RFDJ		2m (6.6') R/A FAKRA D*

*R/A = Right Angle



Ultra Low Profile Puck Antenna



- Low Profile 'Puck' Design 4G/5G
- 698-960/1710-3800MHz
- Optional WiFi & GPS/GNSS function
- IP66 ingress & IK07 impact certified
- Mount on Non Conductive (Plastic) Panel

The Panorama LP[G]P-7-38-[24-58] range is designed to provide a cost effective, robust, ultra low profile antenna for M2M and IoT installations. Ideal for applications where low visibility to reduce risk of vandalism is required.

Part no.	GPS/ LTE WiFi GNSS	Cable & Connector
LPP-7-38-ISP	●	1m (3') SMA Male
LGP-7-38-ISP	● ●	1m (3') SMA Male
LPP-7-38-24-58-ISP	● ●	1m (3') SMA Male
LGP-7-38-24-58-ISP	● ● ●	1m (3') SMA Male

*WiFi cable has Reverse Polarity SMA



WiFi

Antenna Solutions





Low Profile External MiMo WiFi



- Up to 4x4 MiMo WiFi 2.4/5.0GHz
- Rugged Low Profile Design
- Ground plane independent
- Optional integral GPS/GNSS*
- EN50155 certified
- IP69K rated

The LPM/LGM(x)-24-58 range provides a compact, robust roof top WiFi antenna with 2x2, 3x3 or 4x4 MiMo function. It is ground plane independent and has integral ultra-low loss coax cables with pre-fitted connectors. The antenna compliance ensures that it is suitable for use on railway rolling stock and other transportation.

Part no.	LTE	WiFi	GPS/ GNSS	Cable & Connector
L[G]M[X]-24-58	•			1m (3') SMA Male

*WiFi cable has Reverse Polarity SMA



WiFi 2.4/5.0GHz Easyfit Antenna



- Adhesive Mount Antenna
- Install on Window or plastic panel
- Dual Band WiFi 2.4/5.0GHz
- SMA or FAKRA I connector options

EF-24-58 is an efficient and easy to install antenna for providing WiFi connectivity. The compact antenna can be easily positioned on a device plastic housing or vehicle windscreen using the supplied automotive industry grade adhesive pad. Versions are available with Rev pol SMA plug, Std SMA plug or FAKRA I jack connectors.

Part no.	Cable & Connector
EF-24-58-3RPSP	3m (10') Rev Pol SMA
EF-24-58-3SP	3m (10') SMA Male
EF-24-58-3FIJ	3m (10') FAKRA I



Stingray SiSo Internal Antenna



- Cellular, WiFi and GPS/GNSS included
- Dashboard or windshield mount
- Suitable for M3 category vehicles (Compliant with ECE R118)

This internal antenna offers a “3 in 1” solution ideal for telematics or other vehicle communications, where the antenna needs to be fitted discretely or for a “no hole” installation. The compact housing incorporates antennas for LTE / Cellular, Dual Band WiFi and GPS/GNSS. Meeting the requirements of ECE R118, the antenna is suitable for use in M3 Category vehicles (Transportation). The antenna housing is UV resistant and flame retardant, while the integrated coax cables are flame retardant, low smoke specification.

Part no.	Cable & Connector
RAYM2-24-58	3m (10') SMA
RAYM2-24-58	3m (10') FAKRA



Dual Band WiFi Antenna



- Robust panel or bracket mount antenna
- Rugged low profile design
- Excellent bandwidth
- N female connector

The Panorama LPB low profile antenna range has been designed to perform even in extreme environments. At only 82mm (3.22”) high and protected by a robust high impact, flame retardant (halogen free) radome the antenna is almost impervious to daily wear, tear and impact.

Part no.	MiMo 4G/5G	GPS/ GNSS	MiMo WiFi
LPB-24-58			•



SiSo WiFi Panel Antenna

Low Profile Internal MiMo WiFi



- Covers 2.4 & 5GHz dual band WiFi
- SMA-Female connector
- High gain directional antenna
- Ideal WiFi coverage extender

- Up to 4x4 MiMo WiFi 2.4/5.0GHz
- Ceiling mount Omni-directional
- Low profile, robust housing
- EN50155, EN45545-2 & UN ECE R118

The W24-58-CP-9 is a 9dBi gain dual band WiFi antenna covering 2.4 & 5GHz bands. The antenna can be used internally or externally and has 60° beam width in both azimuth and elevation planes.

The CM(x)-24-58 range provides a compact, robust internal WiFi antenna with 2x2, 3x3 or 4x4 MiMo function. It is ground plane independent and has integral ultra-low loss coax cables with pre-fitted connectors. The antenna compliance ensures that it is suitable for use in buildings, railway rolling stock and other transportation.

Part no.	WiFi
W24-58-CP-9	•

Part no.	MiMo WiFi
CM2-24-58	2x2
CM3-24-58	3x3
CM4-24-58	4x4



Accessories

Antenna Solutions

Magnetic Mount

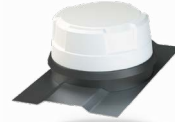


Part no. SAB-225

- Temporary Installation
- For Dome antennas
- Can be fitted anywhere on vehicle
- Ideal for trials and drive-testing

For use with:

LGMM LPMM (Great White Series)	•
LGMQM4 (9 in 1 Series)	•
LPMM4 LGMM4 (5G Mako)	•



Part no. LGMM-EXT-R-SLT

- For use with all Dome Series antennas
- For install on ribbed or uneven panels
- Flexible mounting solution
- Ensures effective sealing to vehicle roof

For use with:

Great White / Great White 5G Antennas	•
Mako / Mako 5G Antennas	•

Bracket Mount



Part no. SAB-309

- Permanent Mounting Solution
- Easy Installation Mast/Wall
- Fits all Dome antennas

For use with:

LP[G]MM(4) series	•
LGMM LPMM	•
LGMQM4	•
LPMM4 LGMM4 (5G Mako)	•



Part no. SP5-0577

- Provides a versatile solution for wall mount applications
- Heavy Duty and weather resistant

For use with:

LP[G]AM series	•
----------------	---



Part no. SP5-0470

- Provides a versatile solution for wall mount applications
- Extremely resistant and weather durable

For use with:

LPB/LPBE	•
----------	---

Coaxial Cables

Panorama offers a large range extension and adapter cables.

Our FRZH type cables are UN ECE R118 and EN45545-1/2 certified. These cables are flame retardant, low smoke and halogen-free.

For project quantity, we can provide custom length and connector configurations.

Cable Assemblies

Part no. C23

- VHF / UHF
- Double Shielded Panorama RG58 C/U
- Low loss 'Comms'



Part no. C29FR

- Cellular 2G/3G/4G
- Double shielded - Stranded core
- Ultra low loss cable
- Flame retardant jacket (C29FR)



Part no. C32

- Cellular 5G / WiFi
- Double shielded - Solid core
- Flame retardant jacket
- Ultra low loss cable



Part no. C240

- Cellular / WiFi
- Double shielded solid core 6mm Ø cable
- Flame retardant jacket
- Longer cable run



Combiner

Wideband Cellular Combiner

- Two outputs
- Wide operating frequency 700-2700MHz



PANORAMA ANTENNAS

Head Office - United Kingdom
sales@panorama-antennas.com
+44 (0)20 8877 4444

Australia
sales.apac@panorama-antennas.com
+61 (08) 9314 1381

France
fr.sales@panorama-antennas.com
+33 554 070 436

Singapore
sales.sea@panorama-antennas.com
+ 65 69 62 68 70

USA
sales.nam@panorama-antennas.com
+1 817-539-1888