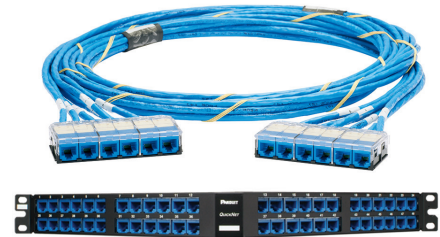


## QuickNet™ Copper Cabling System

The QuickNet™ Copper Cabling System provides a custom, pre-terminated cabling solution which meets unique requirements. Fast and simple to install, the system enables quick network deployment, increased reliability and lowest total cost of ownership as compared to field terminated installations. Engineered for maximum design flexibility and high rack density utilisation (up to 48 ports in one rack space), the system offers 100% factory tested pre-terminated cable assemblies in custom lengths and configurations. QuickNet™ Angled and Flat Patch Panels accept QuickNet™ Pre-Terminated Cassettes, Patch Panel Adapters, and blanks, which snap in and out, with one hand, for quick installation.



### Key Features

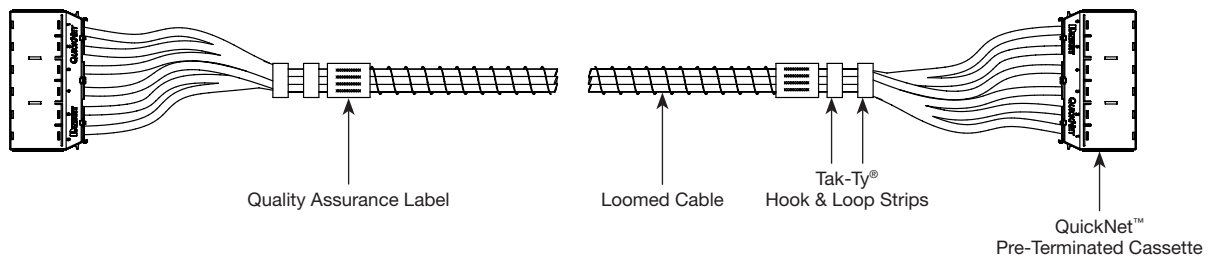
### Benefits

<b>Pre-terminated</b>	Controlled factory environment provides consistent network performance while reducing installation time and on-site waste as compared to field-terminated installations
<b>100% factory tested</b>	Eliminates the time and cost associated with on-site testing and ensures verified performance (permanent link test data supplied with each cable assembly)
<b>Wide range of cable types and performance levels</b>	Category 6A UTP/FTP and Category 6 UTP performance levels available in Euroclass cable flame ratings
<b>Wide range of termination configurations and custom lengths</b>	Cable assemblies allow customization including pre-terminated cassettes, jack modules, modular plugs, and/or unterminated cable options to provide design flexibility for all installations in lengths from 3' to 90m
<b>Modular design</b>	Pre-terminated cassettes snap in and out of QuickNet™ Patch Panels and include an integral release tab to ensure easy on-site moves, adds, and changes Patch panel adapter accepts Mini-Com™ Modules for UTP, fibre optic and audio/visual applications
<b>Standard and high-density solution</b>	QuickNet™ Patch Panels in angled and flat designs enable 24 and 48-ports in one rack unit for efficient rack space utilisation
<b>Assembly identification</b>	Each cable assembly label includes part number, performance level, and serialized quality assurance number for future traceability

### Technical Information

- Each QuickNet™ Cable Assembly is factory tested to electrical permanent link specifications
- TX6A™ 10Gig™ Copper Cabling Systems exceed requirements of ANSI/TIA-568-C.2, ISO 110801 Class E<sub>A</sub> Edition 2.1, and IEEE 802.3an standards for supporting 10GBASE-T requirements
- LSZH rated cables will be marked with the appropriate CPR Euroclass for the cable. Assemblies are not covered by CPR.
- TX6000™ Copper Cabling System exceeds ANSI/TIA-568-C.2 and ISO 11801 2<sup>nd</sup> Edition Category 6/Class E standards
- Jack modules utilise patented Giga-TX™ Technology which optimises performance by maintaining cable pair geometry and eliminates conductor untwist
- Modular plugs meet all applicable ANSI/TIA-568-C.2 requirements and exceed IEC 60603-7 specifications

# QuickNet™ Cable Assembly Ordering Information for Asia Pacific



**Example:**

Q	Z	L	W	C	C	L	0	0	0	1	M	0	1	0
1	2	3	4	5	6	7	8	9	10	11	12	13	14	15

Copper QN Trunk, Cat6A, UTP VariMaTriX, LSZH, White Cable, End 1 Cassette, End 2 Cassette, Black Jacks, Standard Pkg, 10 Metres

**1 – Q = QuickNet™**

**2 – Performance Level**

- C = Category 6 UTP
- Z = Category 6A UTP Vari-MaTriX

**3 – Flame Rating**

- L = LSZH
- P = Plenum

**4 – Cable Colour**

- W = White

**5 – Termination End 1**

- C = Cassette
- J = Jack modules
- P = Modular plugs

**6 – Termination End 2**

- C = Cassette
- J = Jack modules
- P = Modular plugs
- U = Unterminated

**7 – Termination Colour Options**

**Jack Module Colour Options**

- B = Blue, L = Black, R = Red, W = White, Shielded Jack Modules, choose option L (all Shielded Jack Modules are Black)

**Modular Plug and Unterminated Colour Options**

- X = No colour option available, End 1 and End 2 are plug and/or unterminated

**8-11 – Serial Code**

- 0001 No Variation
- 000B End 2 Unterminated with loose blue jacks and cassette
- 000Y End 2 Unterminated with loose black jacks and cassette
- 0013 End 2 Unterminated with loose red jacks and cassette
- 0017 End 2 Unterminated with loose white jacks and cassette

**12 – Unit of Measure**

- M = Metres

**13, 14, 15 – Assembly Length\*\***

- Metres = 003 to 090

# QuickNet™ Cable Assembly Ordering Information for Asia Pacific

## QuickNet™ Patch Panel and Accessories Ordering Information

Part Number	Part Description	No. of ^ Rack Spaces	Std. Pkg. Qty.
<b>QAPP24BL</b>	Angled 24-port patch panel	1	1
<b>QAPP48HDBL</b>	Angled 48-port high density patch panel	1	1
<b>QAPP48HDVNSBL</b>	Angled 48-port high density patch panel with pre-printed vertical numbering on each port for switch applications	1	1
<b>QPP24BL</b>	Flat 24-port patch panel	1	1
<b>QPP48HDBL</b>	Flat 48-port high density patch panel	1	1
<b>QPP48HDVNSBL</b>	Flat 48-port high density patch panel with pre-printed vertical numbering on each port for switch applications	1	1
<b>QSP24BL</b>	Flat 24-port shielded all metal patch panel, for use with shielded QuickNet™ Pre-Terminated Cassettes and Shielded Jack Modules	1	1
<b>QSP48HDBL</b>	Flat 48-port shielded all metal patch panel, for use with shielded QuickNet™ Pre-Terminated Cassettes and Shielded Jack Modules	1	1
<b>QASP24BL</b>	Angled 24-port shielded all metal patch panel, for use with shielded QuickNet™ Pre-Terminated Cassettes and Shielded Jack Modules	1	1
<b>QASP48HDBL</b>	Angled 48-port shielded all metal patch panel, for use with shielded QuickNet™ Pre-Terminated Cassettes and Shielded Jack Modules	1	1
<b>QPPAB</b>	Patch panel adapter accepts all Mini-Com™ Modules for multimedia applications	—	1
<b>QPPBBL</b>	Patch panel blank reserves space for future use and promotes proper airflow and cooling	—	1
<b>QPPLC24</b>	Label/label cover kit for 24-port QuickNet™ Patch Panels	—	1
<b>QPPRT</b>	Removal tool allows individual cables to be removed from plug pack without disruption of other network connections	—	1
<b>QPPLD6-X</b>	Lock-in device prevents unauthorized removal of cables from the plug pack	—	10
<b>QPPN6***</b>	QuickNet™ Plug Pack individual housing accepts six RJ45 modular plugs	—	1
<b>QPPNR6S</b>	QuickNet™ Recessed Plug Pack individual housing accepts six RJ45 modular plugs	—	1

^One rack space = 1.75" (44.45mm).

\*All connectivity is wired T568B. Category 6 Enhanced Performance level utilises Panduit® TX6500™ Category 6 UTP Cable. Permanent link test results shipped with each cable assembly.

\*\*QuickNet™ Patch Panels also available in White (WH).

DISCLAIMER: THE INFORMATION CONTAINED HEREIN IS INTENDED AS A GUIDE FOR USE BY PERSONS HAVING TECHNICAL SKILL AT THEIR OWN DISCRETION AND RISK. BEFORE USING ANY PANDUIT PRODUCT, THE BUYER MUST DETERMINE THE SUITABILITY OF THE PRODUCT FOR HIS/HER INTENDED USE AND BUYER ASSUMES ALL RISK AND LIABILITY WHATSOEVER IN CONNECTION THEREWITH. PANDUIT DISCLAIMS ANY LIABILITY ARISING FROM ANY INFORMATION CONTAINED HEREIN OR FOR ABSENCE OF THE SAME.

### WORLDWIDE SUBSIDIARIES AND SALES OFFICES

PANDUIT US/CANADA  
Phone: 800.777.3300

PANDUIT EUROPE LTD.  
London, UK  
Phone: 44.20.8601.7200

PANDUIT SINGAPORE PTE. LTD.  
Republic of Singapore  
Phone: 65.6305.7575

PANDUIT JAPAN  
Tokyo, Japan  
Phone: 81.3.6863.6000

PANDUIT LATIN AMERICA  
Guadalajara, Mexico  
Phone: 52.33.3777.6000

PANDUIT AUSTRALIA PTY. LTD.  
Victoria, Australia  
Phone: 61.3.9794.9020

For a copy of Panduit product warranties, log on to [www.panduit.com/warranty](http://www.panduit.com/warranty)

For more information

Visit us at [www.panduit.com](http://www.panduit.com)  
Contact Customer Service by email: [cs@panduit.com](mailto:cs@panduit.com)  
or by phone: 800.777.3300

**PANDUIT™**

©2020 Panduit Corp.  
ALL RIGHTS RESERVED.  
COCB44--WW-ENG  
6/2020