



EN HP Engage Express Pedestal Stand must be bolted to the floor; bolts not included. Display head sold separately.

AR HP Engage Express Pedestal Stand must be bolted to the floor; bolts not included. Display head sold separately.

ID HP Engage Express Pedestal Stand must be bolted to the floor; bolts not included. Display head sold separately.

BG HP Engage Express Pedestal Stand must be bolted to the floor; bolts not included. Display head sold separately.

CS HP Engage Express Pedestal Stand must be bolted to the floor; bolts not included. Display head sold separately.

DA HP Engage Express Pedestal Stand must be bolted to the floor; bolts not included. Display head sold separately.

DE HP Engage Express Pedestal Stand must be bolted to the floor; bolts not included. Display head sold separately.

ES HP Engage Express Pedestal Stand must be bolted to the floor; bolts not included. Display head sold separately.

EL HP Engage Express Pedestal Stand must be bolted to the floor; bolts not included. Display head sold separately.

FR HP Engage Express Pedestal Stand must be bolted to the floor; bolts not included. Display head sold separately.

HR HP Engage Express Pedestal Stand must be bolted to the floor; bolts not included. Display head sold separately.

IT HP Engage Express Pedestal Stand must be bolted to the floor; bolts not included. Display head sold separately.

KK HP Engage Express Pedestal Stand must be bolted to the floor; bolts not included. Display head sold separately.

LV HP Engage Express Pedestal Stand must be bolted to the floor; bolts not included. Display head sold separately.

LT HP Engage Express Pedestal Stand must be bolted to the floor; bolts not included. Display head sold separately.

HU HP Engage Express Pedestal Stand must be bolted to the floor; bolts not included. Display head sold separately.

NL HP Engage Express Pedestal Stand must be bolted to the floor; bolts not included. Display head sold separately.

NO HP Engage Express Pedestal Stand must be bolted to the floor; bolts not included. Display head sold separately.

PL HP Engage Express Pedestal Stand must be bolted to the floor; bolts not included. Display head sold separately.

PT HP Engage Express Pedestal Stand must be bolted to the floor; bolts not included. Display head sold separately.

BR HP Engage Express Pedestal Stand must be bolted to the floor; bolts not included. Display head sold separately.

RO HP Engage Express Pedestal Stand must be bolted to the floor; bolts not included. Display head sold separately.

RU HP Engage Express Pedestal Stand must be bolted to the floor; bolts not included. Display head sold separately.

SK HP Engage Express Pedestal Stand must be bolted to the floor; bolts not included. Display head sold separately.

SL HP Engage Express Pedestal Stand must be bolted to the floor; bolts not included. Display head sold separately.

FI HP Engage Express Pedestal Stand must be bolted to the floor; bolts not included. Display head sold separately.

SR HP Engage Express Pedestal Stand must be bolted to the floor; bolts not included. Display head sold separately.

SV HP Engage Express Pedestal Stand must be bolted to the floor; bolts not included. Display head sold separately.

TH HP Engage Express Pedestal Stand must be bolted to the floor; bolts not included. Display head sold separately.

TR HP Engage Express Pedestal Stand must be bolted to the floor; bolts not included. Display head sold separately.

UK HP Engage Express Pedestal Stand must be bolted to the floor; bolts not included. Display head sold separately.

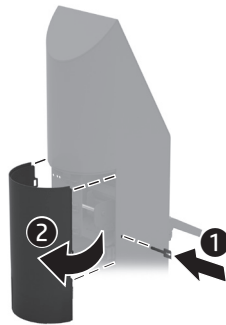
JA HP Engage Express Pedestal Stand must be bolted to the floor; bolts not included. Display head sold separately.

KO HP Engage Express Pedestal Stand must be bolted to the floor; bolts not included. Display head sold separately.

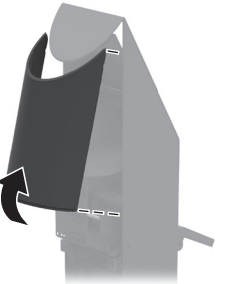
CN HP Engage Express Pedestal Stand must be bolted to the floor; bolts not included. Display head sold separately.

TW HP Engage Express Pedestal Stand must be bolted to the floor; bolts not included. Display head sold separately.

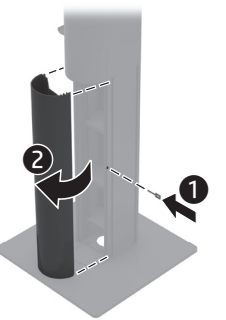
1



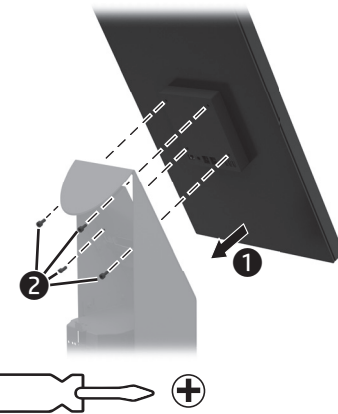
2



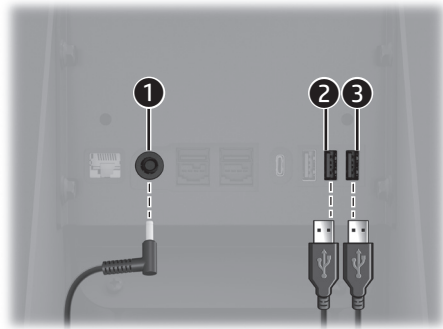
3



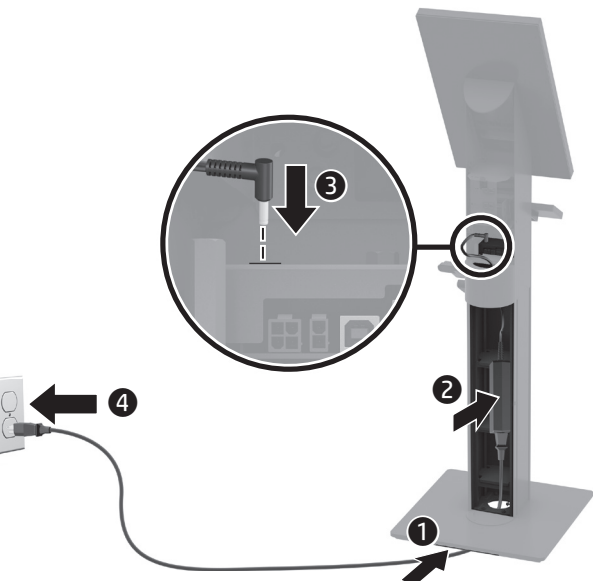
4



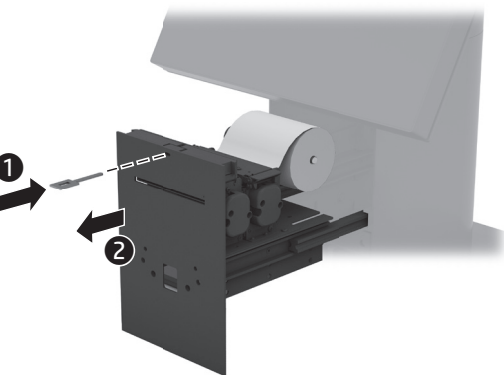
5



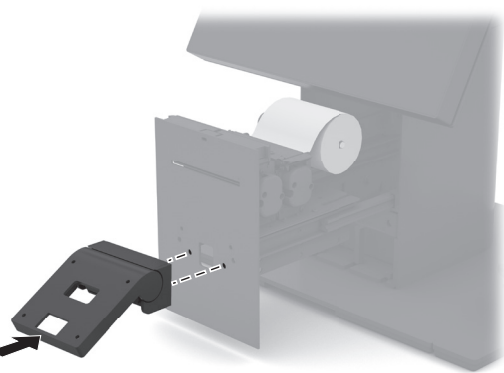
6



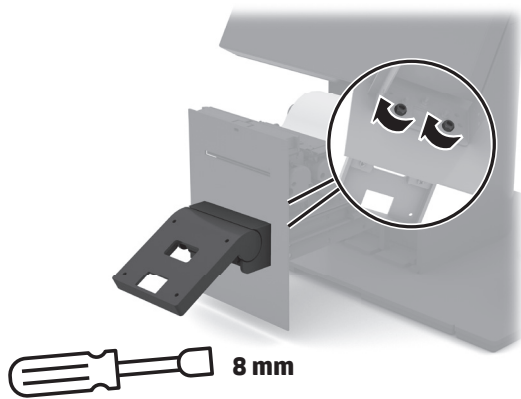
7



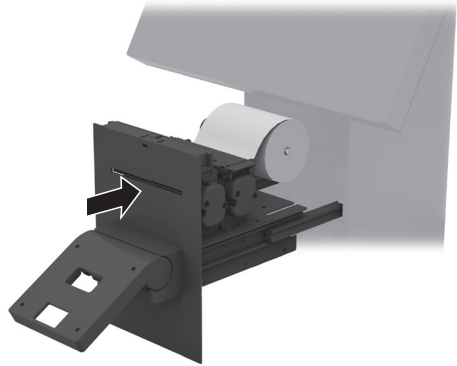
8A



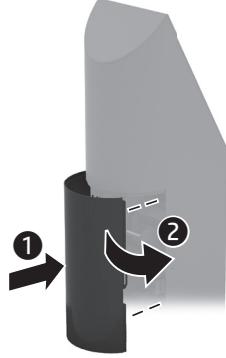
8B



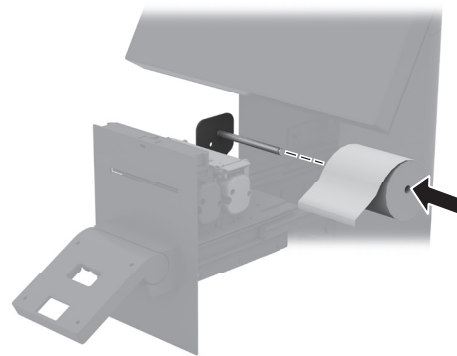
10



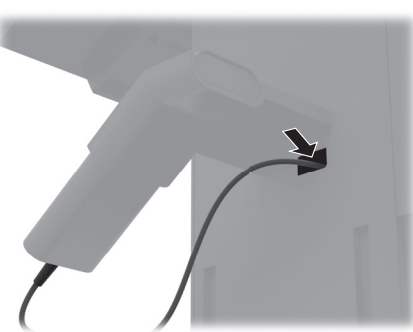
14



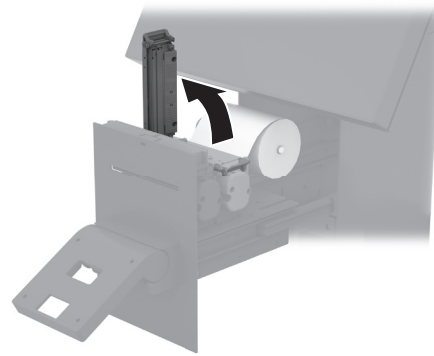
9A



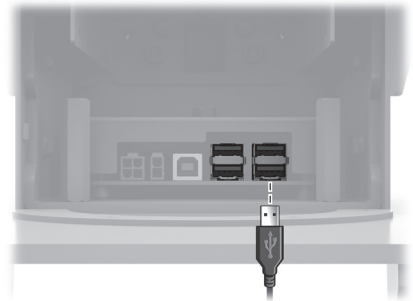
11A



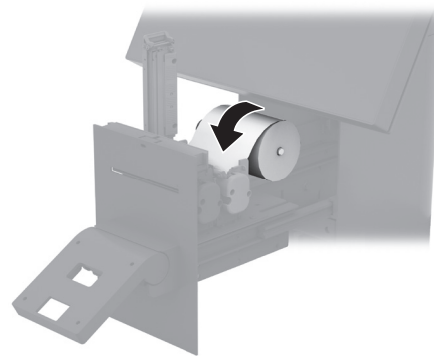
9B



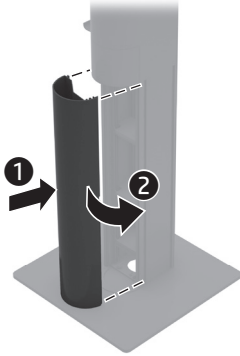
11B



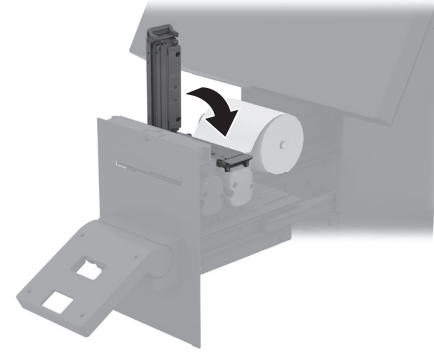
9C



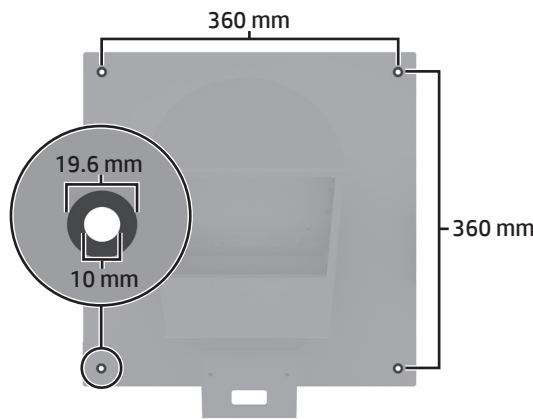
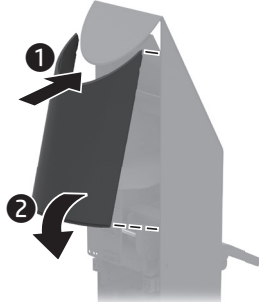
12



9D



13



- EN** For regulatory, certification, and environmental information, including Restriction of Hazardous Substances (RoHS), scan the QR code, or go to www.hp.com/go/regulatory.
- AR** For regulatory, certification, and environmental information, including Restriction of Hazardous Substances (RoHS), scan the QR code, or go to www.hp.com/go/regulatory.
- ID** For regulatory, certification, and environmental information, including Restriction of Hazardous Substances (RoHS), scan the QR code, or go to www.hp.com/go/regulatory.
- BG** For regulatory, certification, and environmental information, including Restriction of Hazardous Substances (RoHS), scan the QR code, or go to www.hp.com/go/regulatory.
- CS** For regulatory, certification, and environmental information, including Restriction of Hazardous Substances (RoHS), scan the QR code, or go to www.hp.com/go/regulatory.
- DA** For regulatory, certification, and environmental information, including Restriction of Hazardous Substances (RoHS), scan the QR code, or go to www.hp.com/go/regulatory.
- DE** For regulatory, certification, and environmental information, including Restriction of Hazardous Substances (RoHS), scan the QR code, or go to www.hp.com/go/regulatory.
- ES** For regulatory, certification, and environmental information, including Restriction of Hazardous Substances (RoHS), scan the QR code, or go to www.hp.com/go/regulatory.
- EL** For regulatory, certification, and environmental information, including Restriction of Hazardous Substances (RoHS), scan the QR code, or go to www.hp.com/go/regulatory.
- FR** For regulatory, certification, and environmental information, including Restriction of Hazardous Substances (RoHS), scan the QR code, or go to www.hp.com/go/regulatory.
- HR** For regulatory, certification, and environmental information, including Restriction of Hazardous Substances (RoHS), scan the QR code, or go to www.hp.com/go/regulatory.
- IT** For regulatory, certification, and environmental information, including Restriction of Hazardous Substances (RoHS), scan the QR code, or go to www.hp.com/go/regulatory.
- KK** For regulatory, certification, and environmental information, including Restriction of Hazardous Substances (RoHS), scan the QR code, or go to www.hp.com/go/regulatory.
- LV** For regulatory, certification, and environmental information, including Restriction of Hazardous Substances (RoHS), scan the QR code, or go to www.hp.com/go/regulatory.

- LT** For regulatory, certification, and environmental information, including Restriction of Hazardous Substances (RoHS), scan the QR code, or go to www.hp.com/go/regulatory.
- HU** For regulatory, certification, and environmental information, including Restriction of Hazardous Substances (RoHS), scan the QR code, or go to www.hp.com/go/regulatory.
- NL** For regulatory, certification, and environmental information, including Restriction of Hazardous Substances (RoHS), scan the QR code, or go to www.hp.com/go/regulatory.
- NO** For regulatory, certification, and environmental information, including Restriction of Hazardous Substances (RoHS), scan the QR code, or go to www.hp.com/go/regulatory.
- PL** For regulatory, certification, and environmental information, including Restriction of Hazardous Substances (RoHS), scan the QR code, or go to www.hp.com/go/regulatory.
- PT** For regulatory, certification, and environmental information, including Restriction of Hazardous Substances (RoHS), scan the QR code, or go to www.hp.com/go/regulatory.
- BR** For regulatory, certification, and environmental information, including Restriction of Hazardous Substances (RoHS), scan the QR code, or go to www.hp.com/go/regulatory.
- RO** For regulatory, certification, and environmental information, including Restriction of Hazardous Substances (RoHS), scan the QR code, or go to www.hp.com/go/regulatory.
- RU** For regulatory, certification, and environmental information, including Restriction of Hazardous Substances (RoHS), scan the QR code, or go to www.hp.com/go/regulatory.
- SK** For regulatory, certification, and environmental information, including Restriction of Hazardous Substances (RoHS), scan the QR code, or go to www.hp.com/go/regulatory.
- SL** For regulatory, certification, and environmental information, including Restriction of Hazardous Substances (RoHS), scan the QR code, or go to www.hp.com/go/regulatory.
- FI** For regulatory, certification, and environmental information, including Restriction of Hazardous Substances (RoHS), scan the QR code, or go to www.hp.com/go/regulatory.
- SR** For regulatory, certification, and environmental information, including Restriction of Hazardous Substances (RoHS), scan the QR code, or go to www.hp.com/go/regulatory.
- SV** For regulatory, certification, and environmental information, including Restriction of Hazardous Substances (RoHS), scan the QR code, or go to www.hp.com/go/regulatory.
- TH** For regulatory, certification, and environmental information, including Restriction of Hazardous Substances (RoHS), scan the QR code, or go to www.hp.com/go/regulatory.
- TR** For regulatory, certification, and environmental information, including Restriction of Hazardous Substances (RoHS), scan the QR code, or go to www.hp.com/go/regulatory.
- UK** For regulatory, certification, and environmental information, including Restriction of Hazardous Substances (RoHS), scan the QR code, or go to www.hp.com/go/regulatory.
- JA** For regulatory, certification, and environmental information, including Restriction of Hazardous Substances (RoHS), scan the QR code, or go to www.hp.com/go/regulatory.
- KO** For regulatory, certification, and environmental information, including Restriction of Hazardous Substances (RoHS), scan the QR code, or go to www.hp.com/go/regulatory.
- CN** For regulatory, certification, and environmental information, including Restriction of Hazardous Substances (RoHS), scan the QR code, or go to www.hp.com/go/regulatory.
- TW** For regulatory, certification, and environmental information, including Restriction of Hazardous Substances (RoHS), scan the QR code, or go to www.hp.com/go/regulatory.

RMN/型號/型号: HSN-C001-K

© Copyright 2023 HP Development Company, L.P.

The information contained herein is subject to change without notice. The only warranties for HP products and services are set forth in the express warranty statements accompanying such products and services. Nothing herein should be construed as constituting an additional warranty. HP shall not be liable for technical or editorial errors or omissions contained herein.

First Edition: January 2023

PRINTER: Replace this box with Printed- In (PI) Statement(s) as per spec.
NOTE: This box is simply a placeholder. PI Statement(s) do not have to fit inside the box but should be placed in this area.



N36290-B21