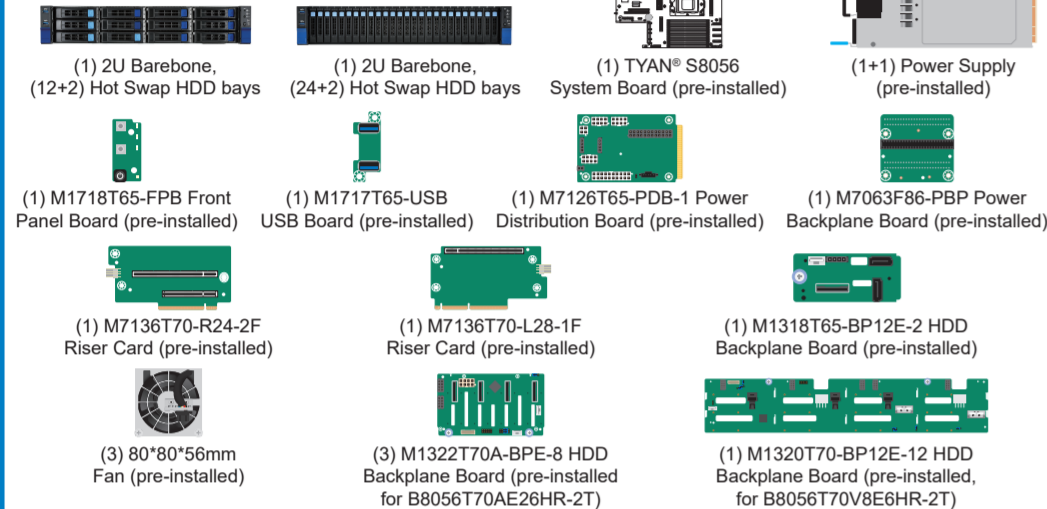


## 1 General Information

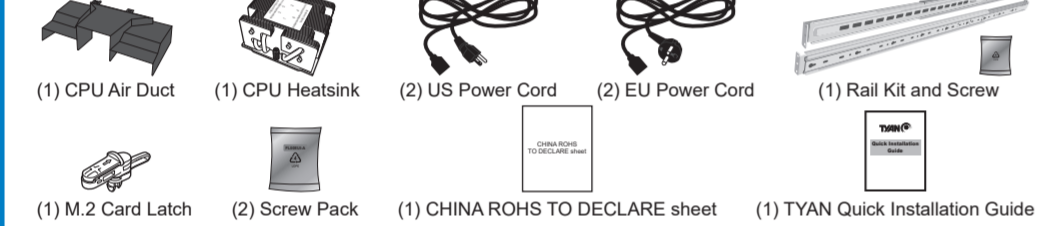
### Read Me First

- The Barebone User's Manual is available for download from our Web site at <http://www.tyan.com>. Make sure to read all precautions and instructions before you start installing the server system.
- Refer all servicing to qualified personnel to avoid the risk of damage to the server system.
- Exercise normal ESD (Electrostatic Discharge) procedures during system integration. TYAN/MITAC recommends wearing gloves and an anti-static wrist strap to avoid possible damage to the equipment.
- Current processor socket design places the pins on the motherboard instead of the processor itself. Exercise caution when installing the processors as the manufacturer's warranty does not cover damage inflicted upon the motherboard, including damage to the CPU sockets.

### Box Content



### Accessories



### Required Hardware Components

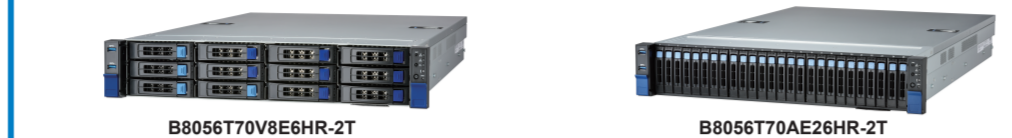
- Minimum Hardware Requirements**  
To avoid integration difficulties and possible board damage, your system must meet the following minimum requirements:
- Processor: (1) AMD Zen 4 (Genoa) series processor (TDP up to 320W)
  - Memory Type:
    - (24) DIMM slots support
    - (24) DIMM slots per CPU; (12) memory channels per CPU
    - RDDR5 4800 w/ ECC (1.2V) when 2DPC/1DPC; LRRDR5 4800 w/ ECC (1.2V) when 2DPC/1DPC
  - Hard Disk Drives:
    - B8056T70V8E6HR-2T: (12) hot-swap 3.5"/2.5" SATA HDD+ first 4bays also support(4) hot-swap NVMe HDD
    - (2) hot-swap 2.5" NVMe HDD at Rear
    - B8056T70AE26HR-2T: (24) hot-swap 2.5" NVMe HDD
    - (2) hot-swap 2.5 NVMe HDD at Front
  - Rack Mount Kit (Industry 19" rack-mountable)

**NOTE:** The updated hardware requirements of the system please refer to the barebones user's manual on our website at [www.tyan.com](http://www.tyan.com)

### Tools Required



## 3 System Installation

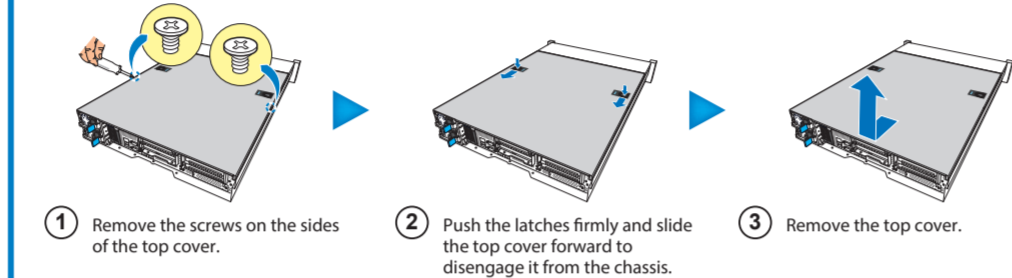


### Open the Chassis

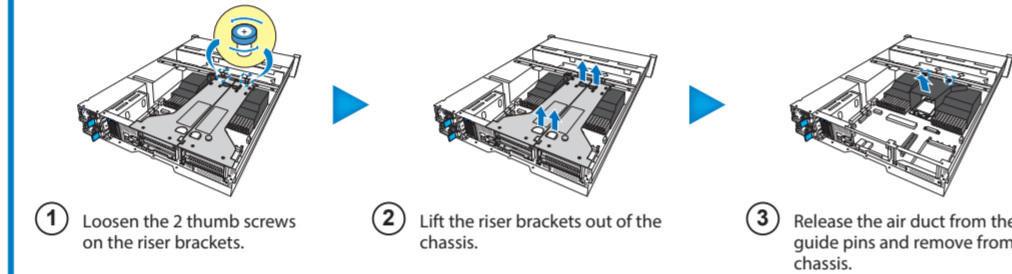
#### Preparing the Chassis

Read normal ESD (Electrostatic Discharge) procedures.

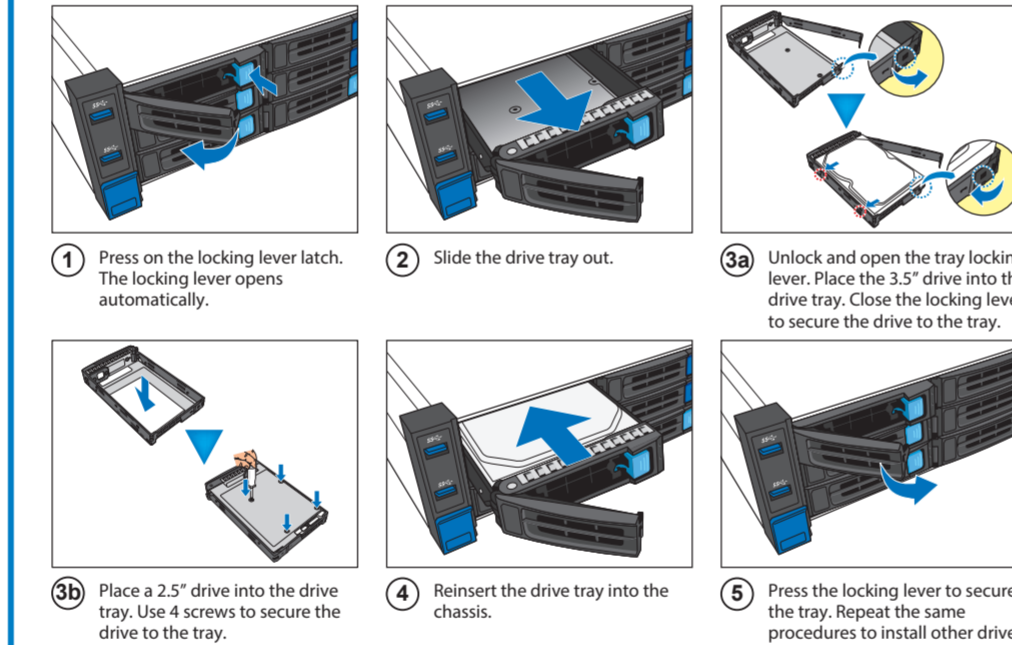
Place your TYAN® Server Chassis on a flat anti-static surface to perform the following integration procedures. Read ESD procedures before reaching inside to install components.



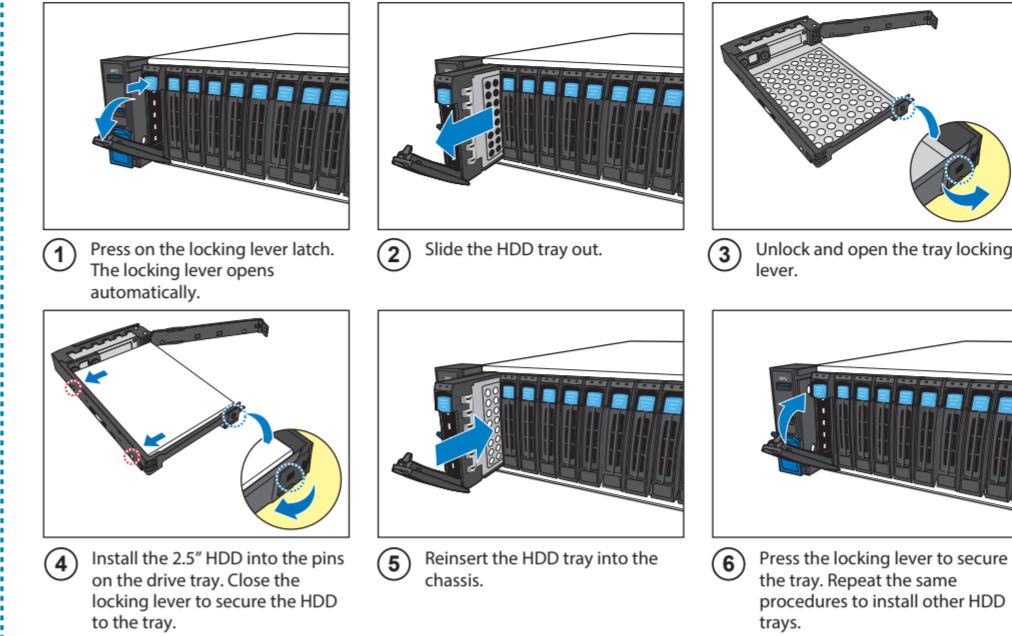
### Remove the Air Duct



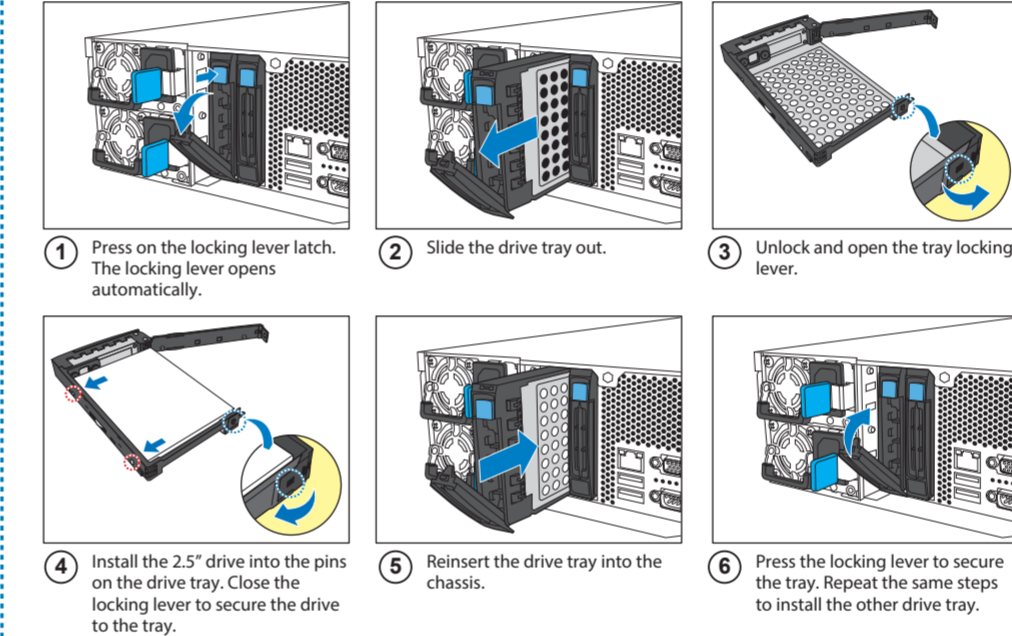
### Install the Front Hard Disk Drives (2.5" or 3.5") for B8056T70V8E6HR-2T SKU



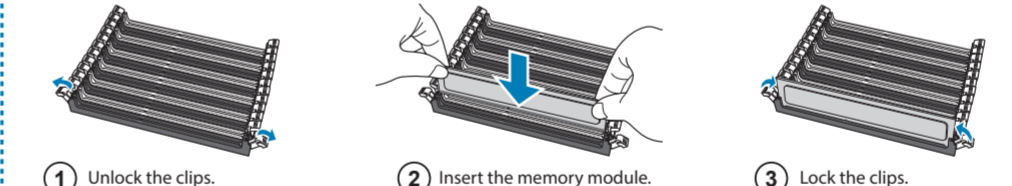
### Install the Front Hard Disk Drives (2.5") for B8056T70AE26HR-2T SKU



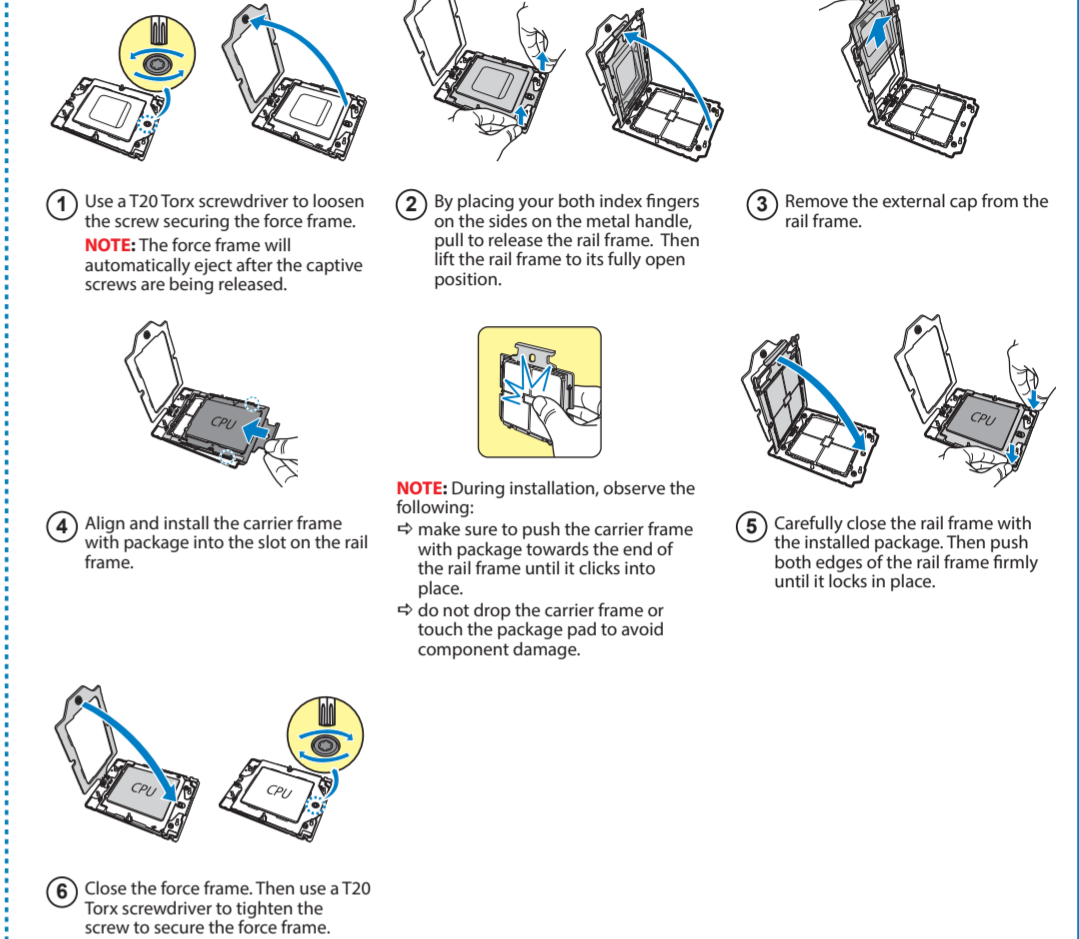
### Install the Rear Hard Disk Drives (2.5") for B8056T70V8E6HR-2T SKU



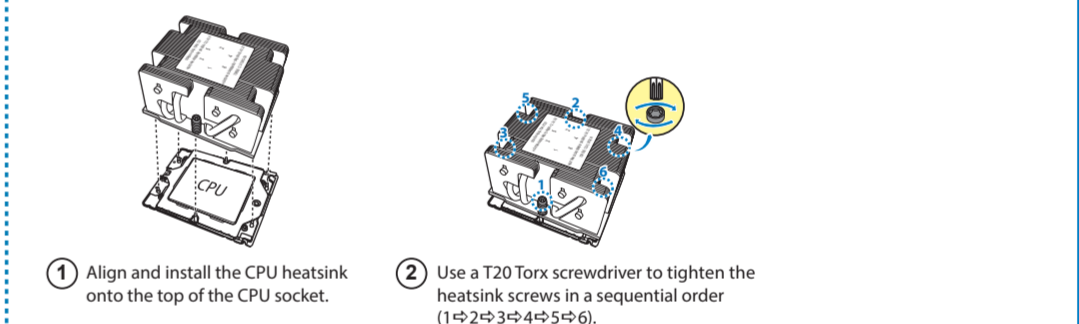
### Install the Memory



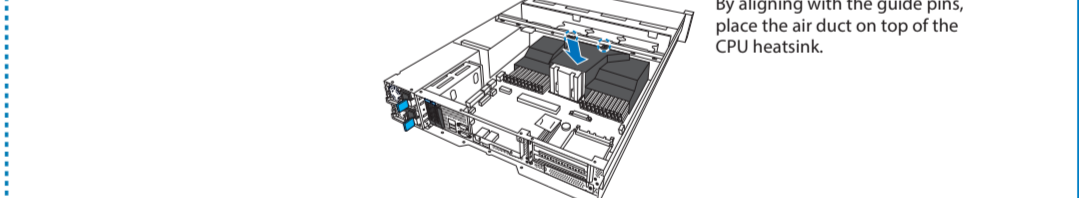
### Install the Processor



### Install the CPU Heatsink

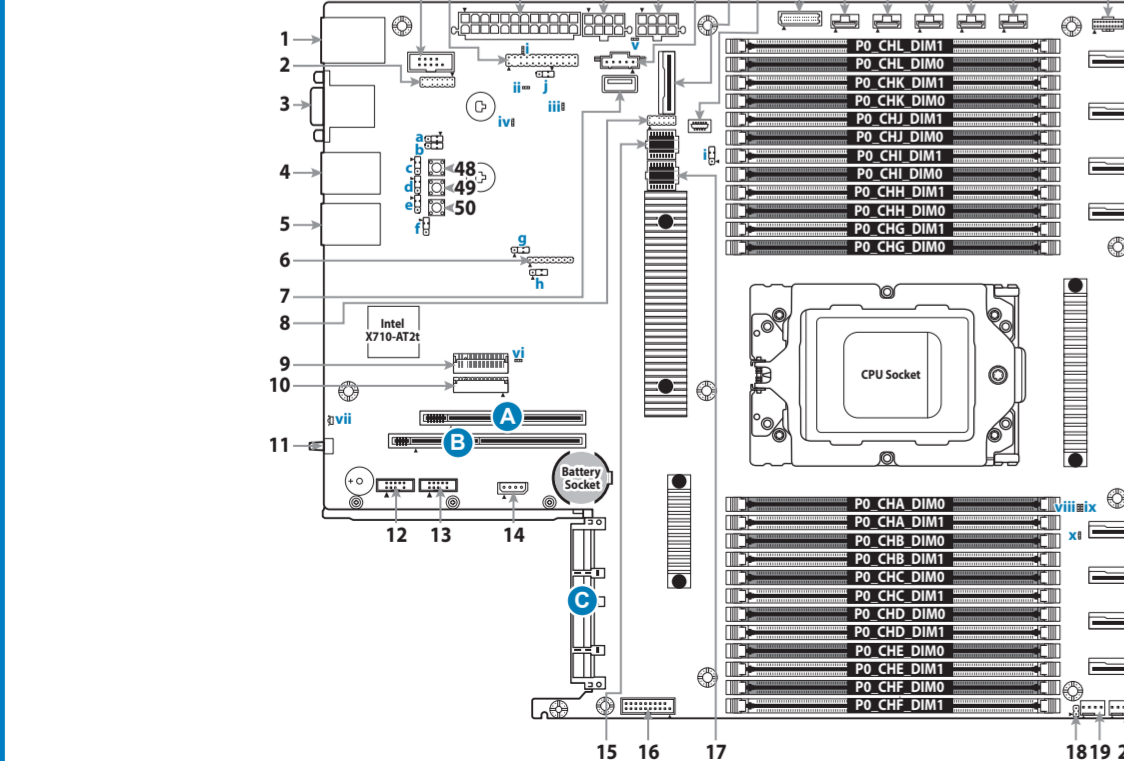


### Install the Air Duct



## 2 Motherboard Placement

### Motherboard Placement



#### CONNECTORS

- RJ45 LAN Port (LAN3) Dedicated IPMI + USB3.2 Gen1x2
- VGA Header (VGA1)
- VGA Port + COM port
- RJ45 LAN Port (LAN1)
- RJ45 LAN Port (LAN2)
- CP/LD JTAG Connector (J12)
- TYPE A USB3.2 Gen1 Header (TYPEA\_USB1)
- TYAN Module Header (J62)
- M.2 Connector (M2\_CN2)
- M.2 Connector (M2\_CN1)
- ID Button
- SGPIO Header (SGPIO0)
- SGPIO1 Header (SGPIO1)
- IPMB Connector (IPMB1)
- BIOS Socket
- USB3.2 Gen1 Header (USB3\_FPIO1)

#### LEDS

- i BMC ALERT LED (D18)
- ii SYS\_PWROK LED (D32)
- iii BMC heartbeat LED (D1\_2)
- iv PROCHOT LED (D26)
- v PSU\_ALERT LED (D331)
- vi SATA & M.2 LED (D39)
- vii ID LED
- viii PWR\_GOOD LED (D52)
- ix PWROK LED (D57)
- x CPU RESET LED (D58)

#### JUMPERS

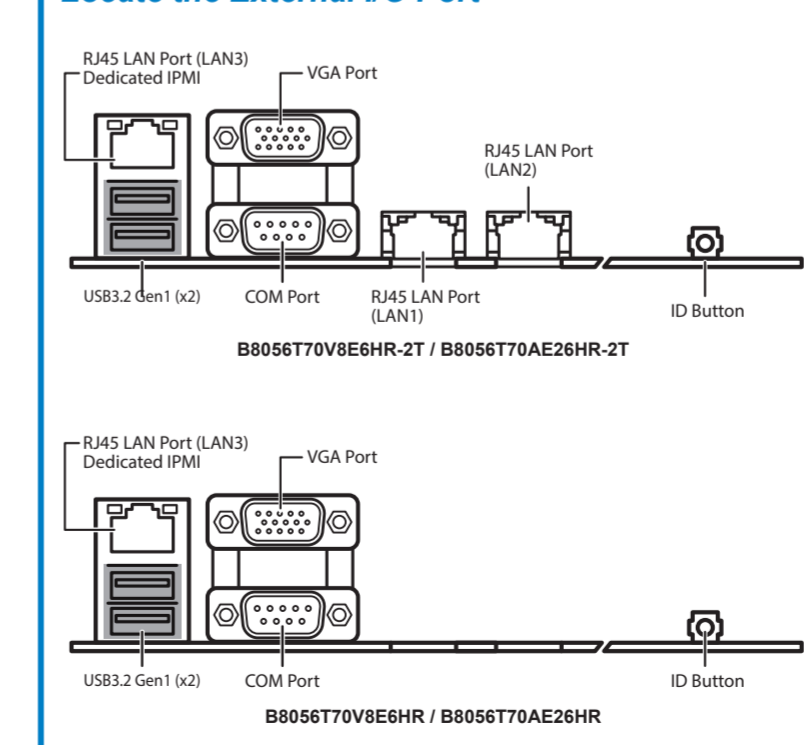
- a COM2 Switch Jumper (J7)
- b COM2 Switch Jumper (J6)
- c COM1 Jumper (J2)
- d COM1 Switch Jumper (J8)
- e COM1 Switch Jumper (J9)
- f NCSI SEL Jumper (J4)
- g SMBUS SEL Jumper (3PHD1)
- h CPLD force PowerOn SEL Jumper (J3)
- i Clear CMOS Jumper (J75)
- j Reset Jumper (J33)

#### SLOTS

- A PCIe#1 x24 (PESLOT1)
- B PCIe#2 x16 (PESLOT2)
- C OCP 3.0 Mezzanine Slot

## 4 I/O Ports

### Locate the External I/O Port



### Installing the Add-On card (Optional)

