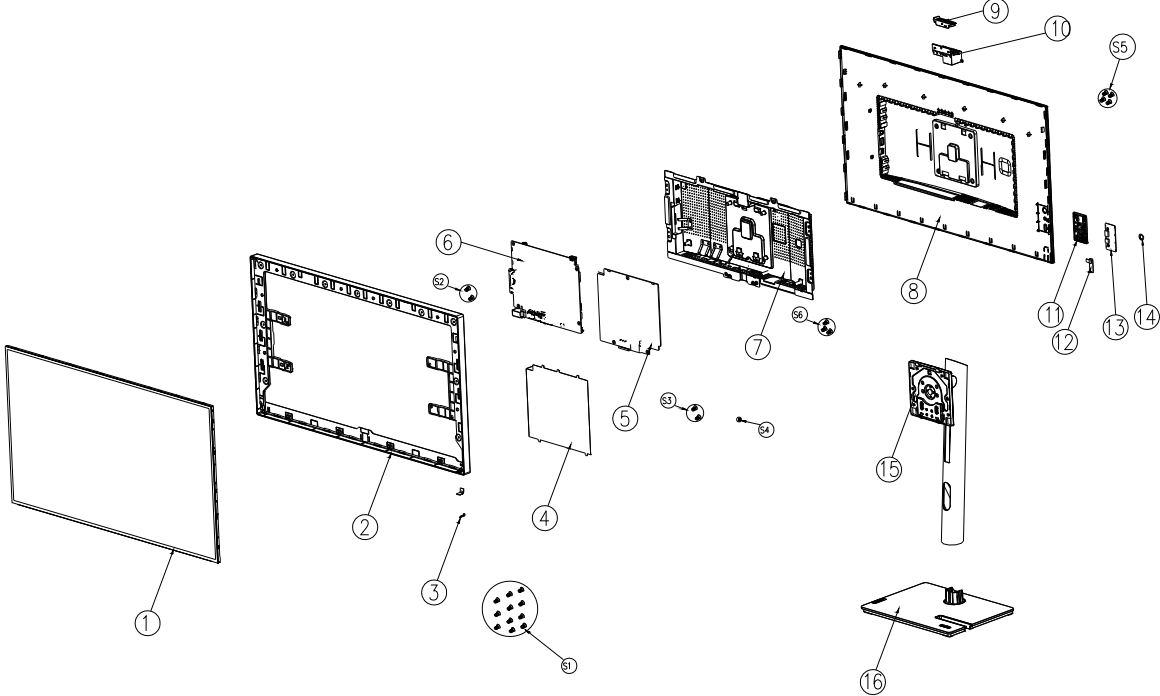


P27h-30 Simplified service manual for dismantling



Model Name: Lenovo P27h-30

Exploded Diagram



1. Precaution

Please read the precaution as follows to prevent any damages to the LCD Monitor.
Make sure all power connector is removed. Be sure that the LCD Monitor is in power off status.



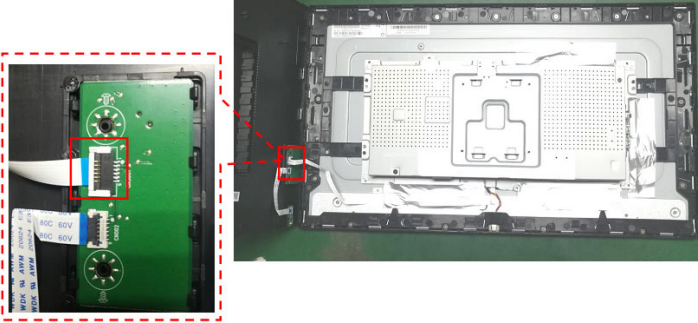
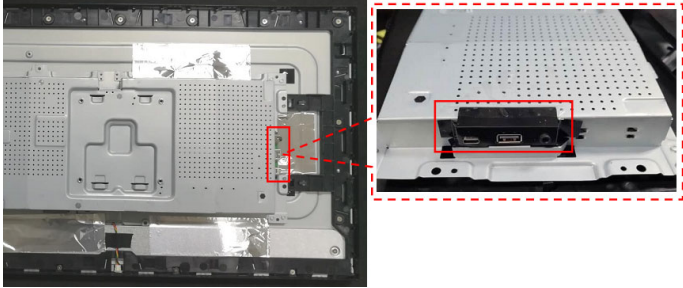
<p>Prepare soft cloth and sponge as working platform to place LCD monitor horizontally.</p>	
<p>Hold LCD by the side carefully and DON'T touch or press panel directly.</p>	

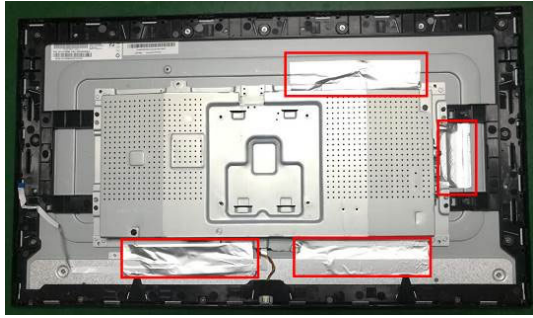
2. Appropriate tools

Select the Appropriate tools for disassembly and re-assembly.

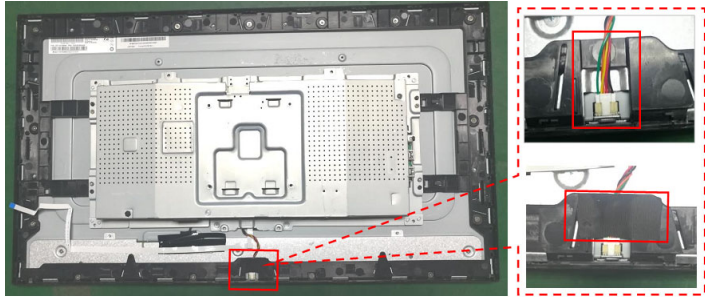
Phillips screwdriver (#2)	
spacer screwdriver	
C/D disassembly tool	
Gloves or soft cloth	

3. Disassembly SOP

<p>Push the button to remove the stand-base assy.</p>	
<p>Unscrew the screw*4pcs Tool: Screwdriver #2</p> <p>Use disassembly tool to open all the latches along the edge of the Rear Cover.</p>	
<p>Disconnect the pin and take off the Mylar and the tapes.</p>	
	

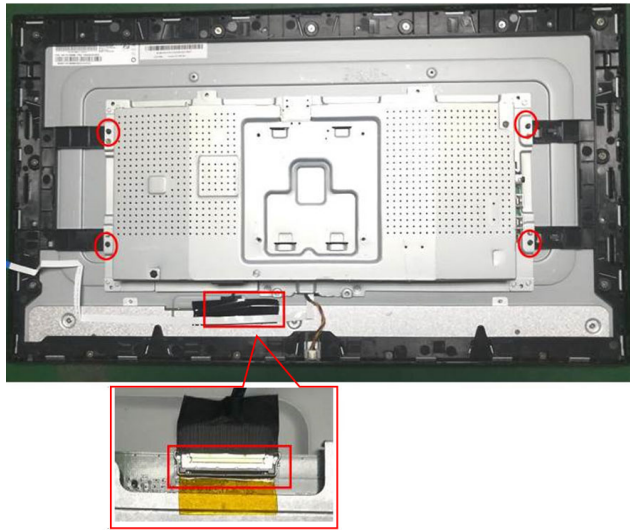


Take off the tape and disconnect the pin.



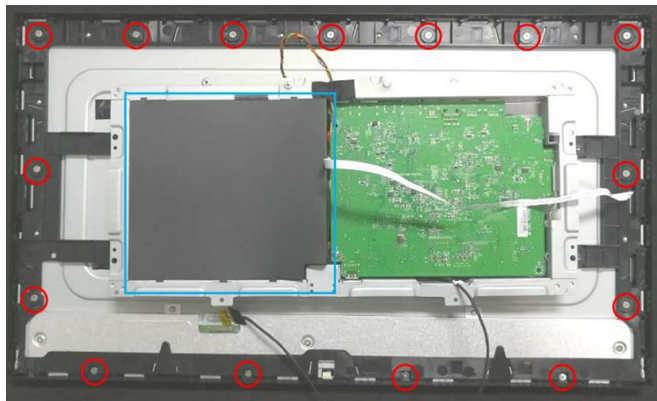
Unscrew the screw*4 pcs to remove the main frame.
Tool: Screwdriver #2

Tear off tape and disconnect the connector



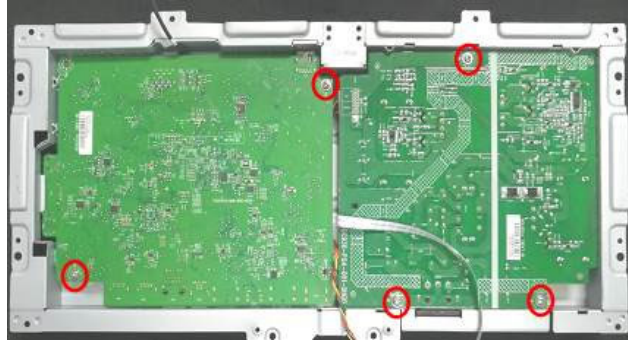
Remove the screw*15 pcs to separate the panel and the middle frame.
Tool: Screwdriver #2

Remove the mylar

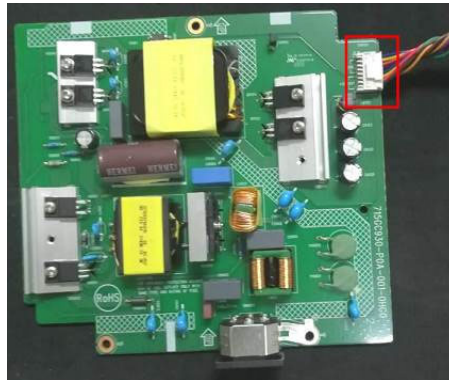
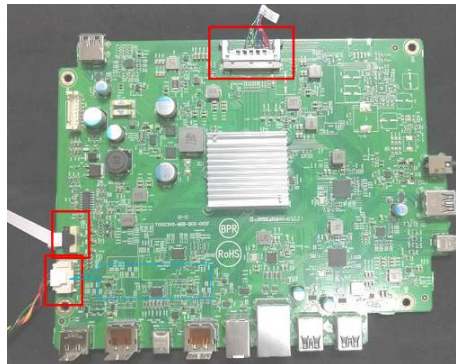


Remove the screw*8pcs

Tool: Screwdriver #2



Disconnect the pins



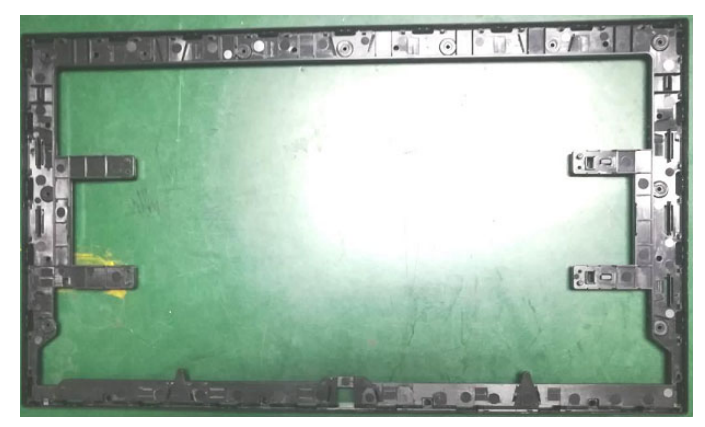
Separate the panel and the middle frame



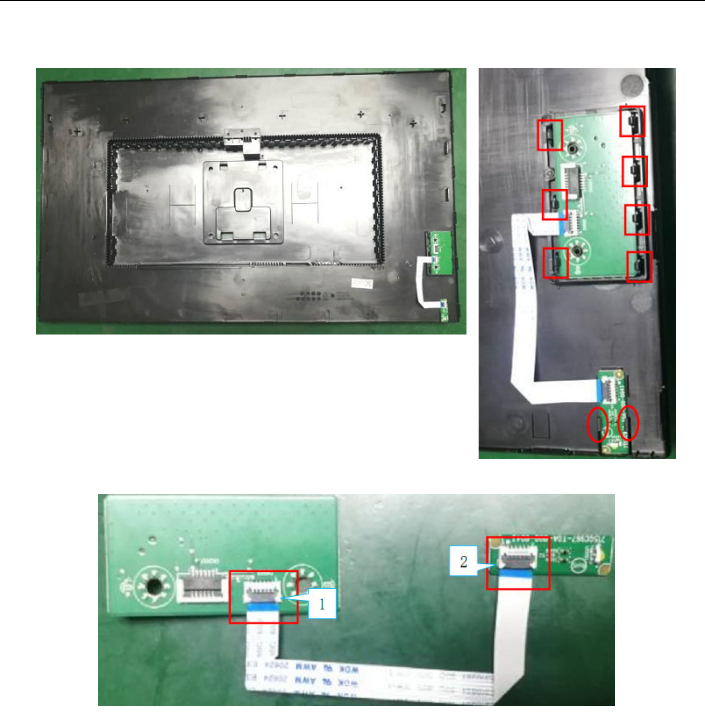
The panel



The middle frame



Disconnect the pins to remove the key board and the LED board



The rear cover

