

IdeaPad Slim 3 (14", 05)

IdeaPad Slim 3 (15", 05)

IdeaPad Slim 3 (17", 05)

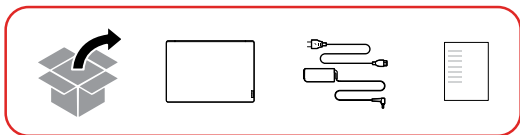
IdeaPad 3 (14", 05)

IdeaPad 3 (15", 05)

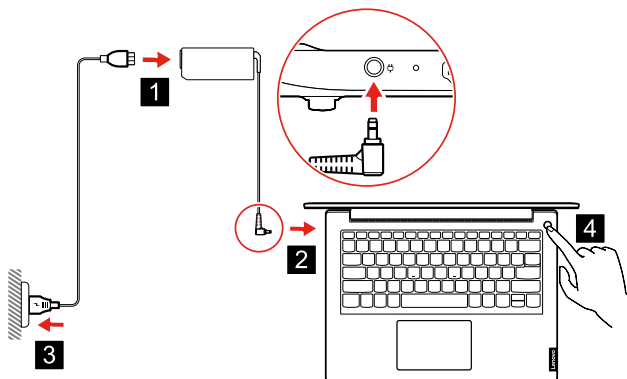
IdeaPad 3 (17", 05)

Setup Guide

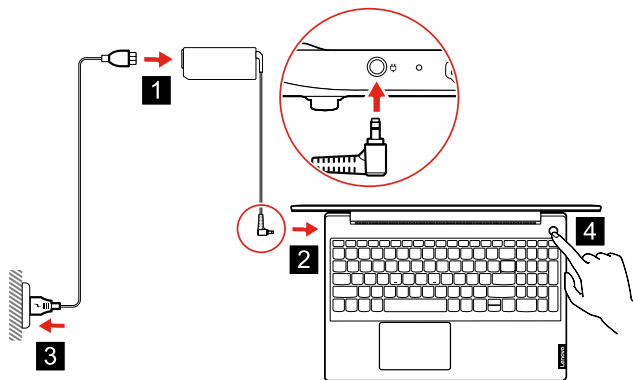
Initial Setup



14-inch models



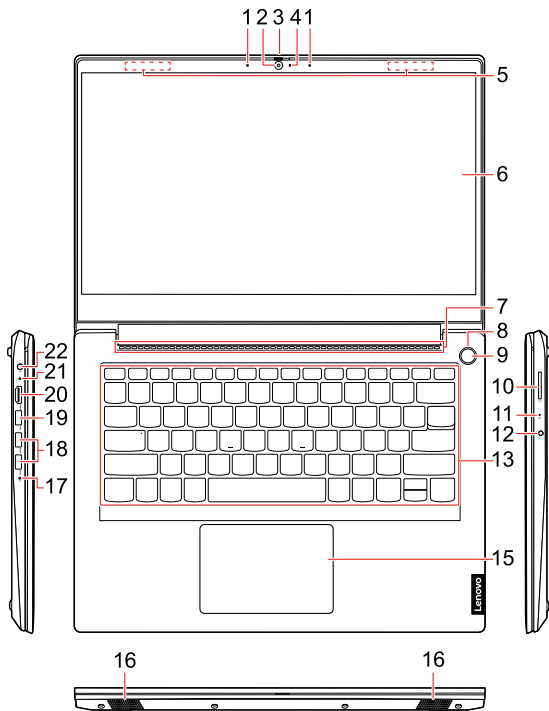
15-inch models and 17-inch models



 The illustrations in this guide are for your reference only.

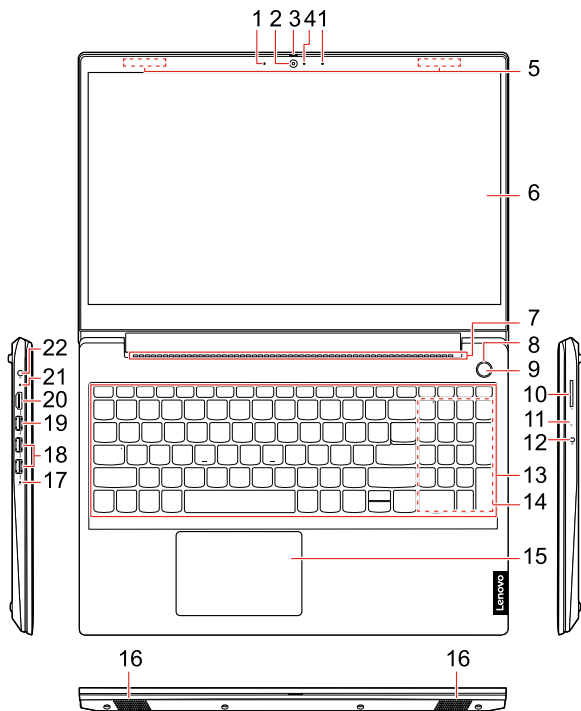
Overview

14-inch models



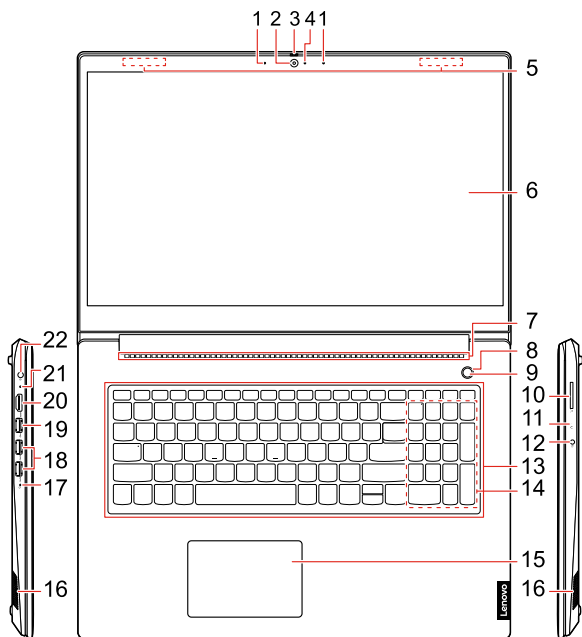
* For selected models

15-inch models



* For selected models

17-inch models



* For selected models

1. Microphones
2. Camera
3. Camera cover slider
4. Camera light
5. Wireless antennas
6. Screen
7. Ventilation slots
8. Power button/ Fingerprint reader*
9. Power button/Fingerprint reader*
10. SD card slot
11. Novo button hole
12. Combo audio jack
13. Keyboard
14. Numeric keypad
15. Touchpad
16. Speakers
17. Power light
18. USB (3.2 Gen 1) Type-A connectors (2)
19. USB 2.0 connector
20. HDMI™ connector
21. Charging light
22. Power connector

i Read the statement on USB transfer rate in the *User Guide*. Refer to the *Safety and Warranty Guide* for accessing the *User Guide*.

Additional information

Specific absorption rate for European Union

YOUR DEVICE MEETS INTERNATIONAL GUIDELINES FOR EXPOSURE TO RADIO WAVES.

The Europe 10g Specific Absorption Rate (SAR) limit for mobile devices is 2.0 W/kg. To view your product specific SAR value, go to

<https://support.lenovo.com/us/en/solutions/sar>.

If you are interested in further reducing your RF exposure then you can easily do so by limiting your usage or simply keeping the device away from the body.

European Union — compliance with the Radio Equipment Directive

Hereby, Lenovo (Singapore) Pte. Ltd., declares that the radio equipment type IdeaPad 3 14ADA05, IdeaPad 3 14ARE05, IdeaPad 3 14IGL05, IdeaPad 3 14IIL05, IdeaPad 3 14IJL05, IdeaPad 3 14IML05, IdeaPad 3 14ITL05, IdeaPad 3 15ADA05, IdeaPad 3 15ARE05, IdeaPad 3 15IGL05, IdeaPad 3 15IIL05, IdeaPad 3 15IJL05, IdeaPad 3 15IML05, IdeaPad 3 15ITL05, IdeaPad 3 17ADA05, IdeaPad 3 17ARE05, IdeaPad 3 17IML05, IdeaPad 3 17IIL05, IdeaPad 14sARE 2020, IdeaPad 14sIIL 2020, IdeaPad 14sIML 2020, IdeaPad 15sARE 2020, IdeaPad 15sIIL 2020, and IdeaPad

15sIML 2020 are in compliance with Directive 2014/53/EU.

The full text of the system EU declaration of conformity is available at the following Internet address:

<https://www.lenovo.com/us/en/compliance/eu-doc>

This radio equipment operates with the following frequency bands and maximum radio-frequency power:

Technology	Frequency band [MHz]	Maximum transmit power
WLAN 802.11b/g/n/ax	2400 - 2483.5	< 20 dBm
WLAN 802.11a/n/ac/ax	5150 - 5725	< 23 dBm
WLAN 802.11a/n/ac/ax	5725 - 5875	< 13.98 dBm
Bluetooth BR/EDR/LE	2400 - 2483.5	< 20 dBm

Usage of all the radio devices is limited to indoor in the band 5150 MHz to 5350 MHz (channels 36, 40, 44, 48, 52, 56, 60, 64).

First Edition (January 2020)

© Copyright Lenovo 2020

LIMITED AND RESTRICTED RIGHTS NOTICE: If data or software is delivered pursuant to a General Services Administration "GSA" contract, use, reproduction, or disclosure is subject to restrictions set forth in Contract No. GS-35F-05925.



Reduce | Reuse |
Recycle