

**Product End-of-Life Disassembly Instructions**
**Product Category:** **Servers**
**Marketing Name / Model**

[List multiple models if applicable.]

HPE ProLiant ML30 Gen10 Plus

**Purpose:** The document is intended for use by end-of-life recyclers or treatment facilities. It provides the basic instructions for the disassembly of HPE products to remove components and materials requiring selective treatment, as defined by Directive 2012/19/EU of the European Parliament and of the Council on Waste Electrical and Electronic Equipment (WEEE).

**1.0 Items Requiring Selective Treatment**

1.1 Items listed below are classified as requiring selective treatment.

1.2 Enter the quantity of items contained within the product which require selective treatment in the right column, as applicable.

Item Description	Notes	Quantity of items included in product
Printed Circuit Boards (PCB) or Printed Circuit Assemblies (PCA)	With a surface greater than 10 sq cm	4
Batteries	All types including standard alkaline and lithium coin or button style batteries	2
Mercury-containing components	For example, mercury in lamps, display backlights, scanner lamps, switches, batteries	0
Liquid Crystal Displays (LCD) with a surface greater than 100 sq cm	Includes background illuminated displays with gas discharge lamps	0
Cathode Ray Tubes (CRT)		0
Capacitors / condensers (Containing PCB/PCT)		0
Electrolytic Capacitors / Condensers measuring greater than 2.5 cm in diameter or height	Depending on Power Supply Model	4
External electrical cables and cords		1
Gas Discharge Lamps		0
Plastics containing Brominated Flame Retardants weighing > 25 grams (not including PCBs or PCAs already listed as a separate item above)		0

Item Description	Notes	Quantity of items included in product
Components and parts containing toner and ink, including liquids, semi-liquids (gel/paste) and toner	Include the cartridges, print heads, tubes, vent chambers, and service stations.	0
Components and waste containing asbestos		0
Components, parts and materials containing refractory ceramic fibers		0
Components, parts and materials containing radioactive substances		0

## 2.0 Tools Required

List the type and size of the tools that would typically be used to disassemble the product to a point where components and materials requiring selective treatment can be removed.

Tool Description	Tool Size (if applicable)
Torx Driver	T-15/ T-10
Screw Driver	Cross/Flat
Sharp Nose Pliers	

## 3.0 Product Disassembly Process

3.1 List the basic steps that should typically be followed to remove components and materials requiring selective treatment:

1. System Board Battery - Remove the side panel and remove the battery from the system board.
2. Capacitors in 350W power supply => Remove the power supply from the system. With a screw driver remove the screws securing the top cover and loosen the screws securing the PCA. Then use Sharp Nose Pliers to remove the daughter card, and electrolyte-capacitor.
3. Capacitors in 500W PSU => Push latch and remove PSU from the system. With a screw driver remove the screws securing the cover and take the PCA out. Then use Sharp Nose Pliers to remove the daughter card, and electrolyte-capacitor. Then use Sharp Nose Pliers to remove the daughter card, and electrolyte-capacitor.

3.2 Optional Graphic. If the disassembly process is complex, insert a graphic illustration below to identify the items contained in the product that require selective treatment (with descriptions and arrows identifying locations)

**Attachment 1 – System battery location**

**Attachment 2 – 350W PSU (Delta) disassemble**

**Attachment 3 – 500W PSU (Delta) disassemble**

**Attachment 4 – 500W PSU (Liteon) disassemble**

**Attachment 5 – 500W PSU (CHICONY) disassemble**

**SMC**

**Expansion Box System exploding drawing**

**Attachment 1 –Remove front bezel**

**Attachment 2 –Remove side cover**

**Attachment 3 –Release CPU HS and CPU**

**Attachment 4 –Release DIMM**

**Attachment 5 –Remove HDD cage**

**Attachment 6 –Remove system cables**

**Attachment 7 –Remove Power Supply**

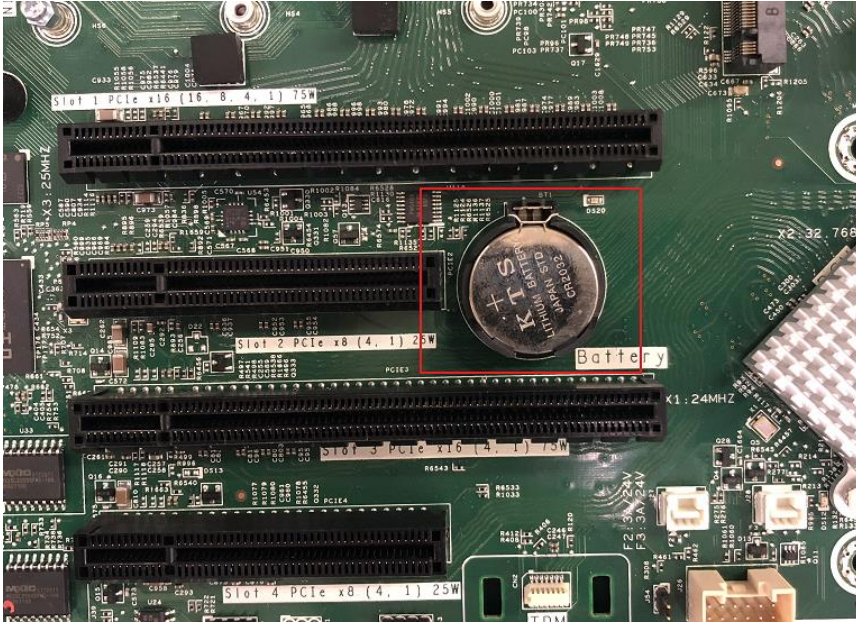
**Attachment 8 –Remove system board**

**Attachment 9 –Remove system fan**

**Attachment 10 –Remove SMC cables**

# Attachement1 - System battery location

System battery location – BT1



## Attachement2 - 350W PSU (Delta) disassemble

Fig 1 Remove cover screw use screw driver

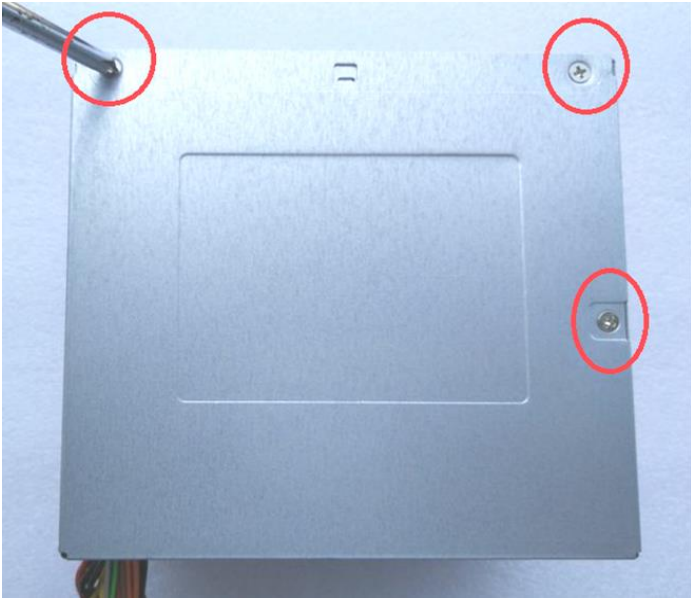


Fig 2 Remove another side cover screw use screw driver

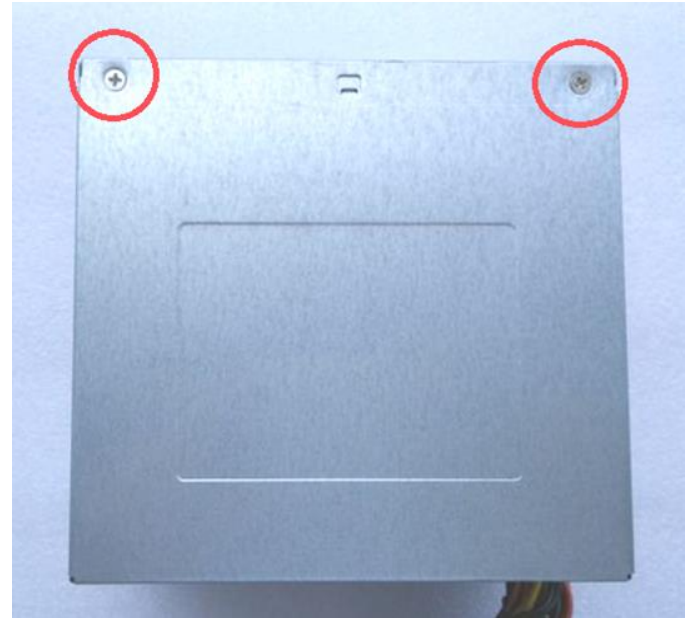


Fig 3 Cut the cable tie use Micro shear

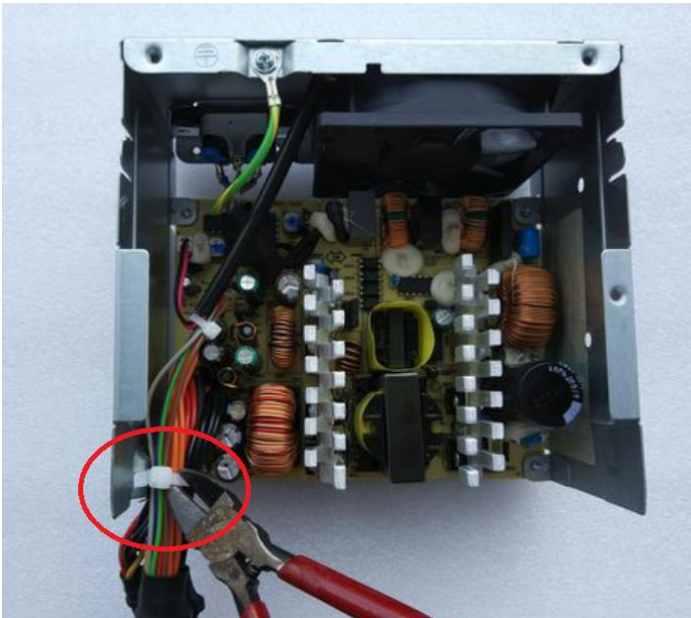


Fig4 Cut the cable tie use Micro shear

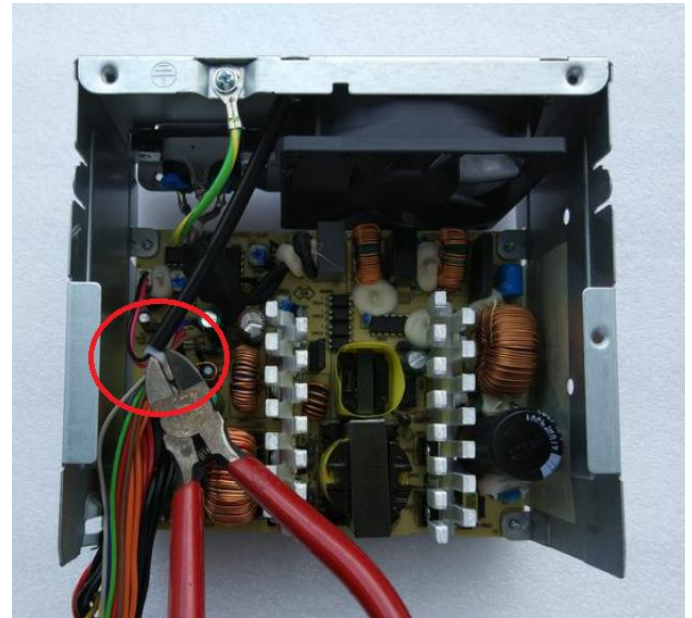


Fig 5 Remove fan connector by hand

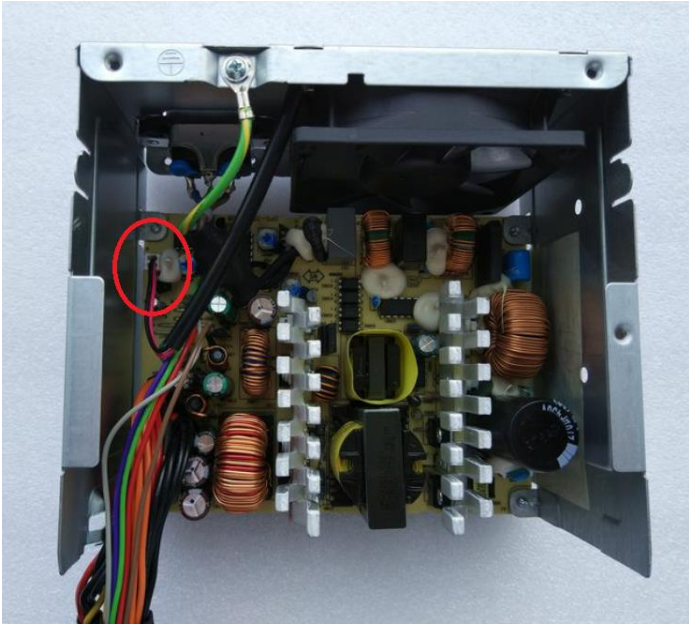


Fig 6 Remove ground wire screw use screw driver

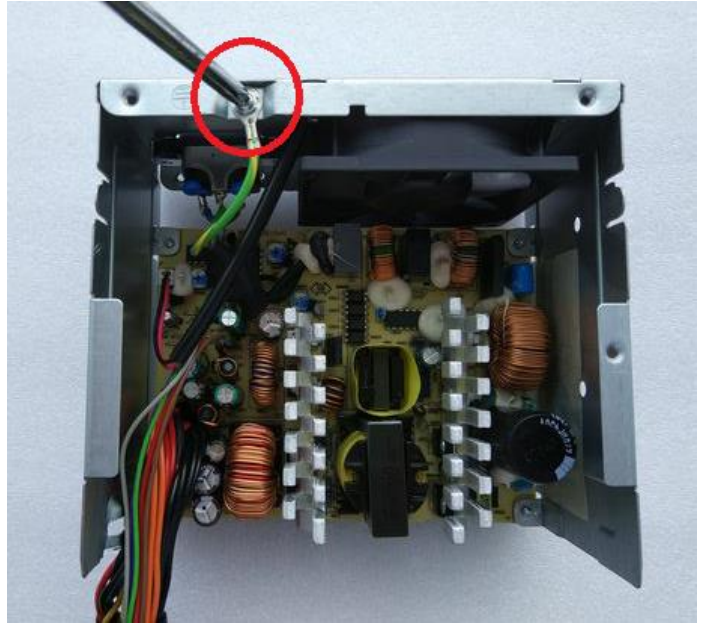


Fig 7 Remove PCB screw use screw driver

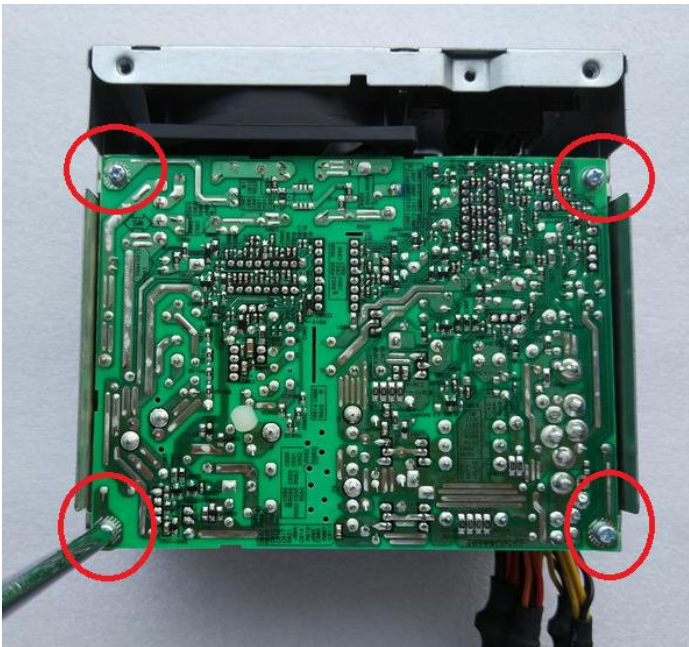


Fig8 Remove AC inlet screw use screw driver

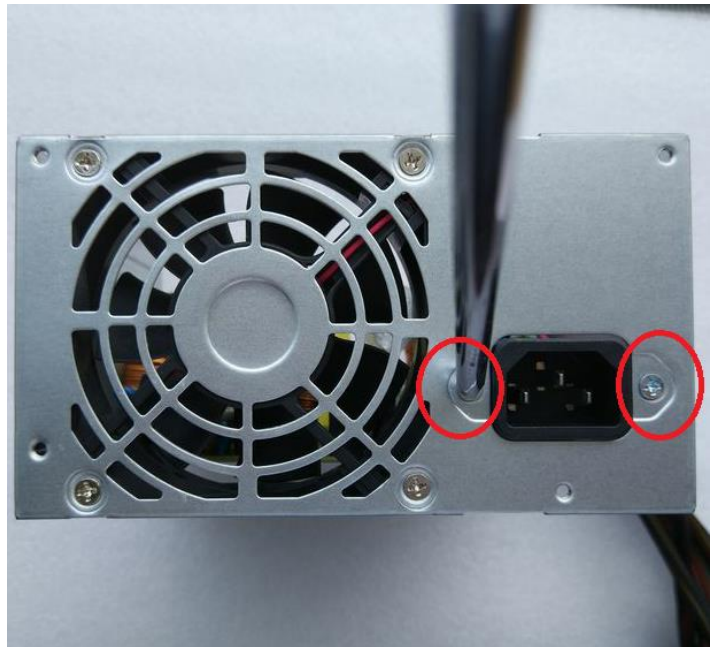


Fig 9 Remove Electrolytic Capacitors / Condensers measuring greater than 2.5 cm in diameter or height

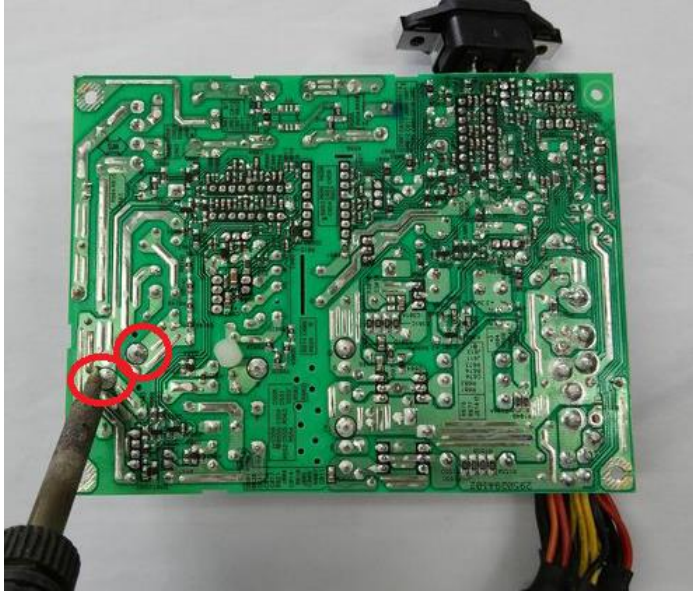
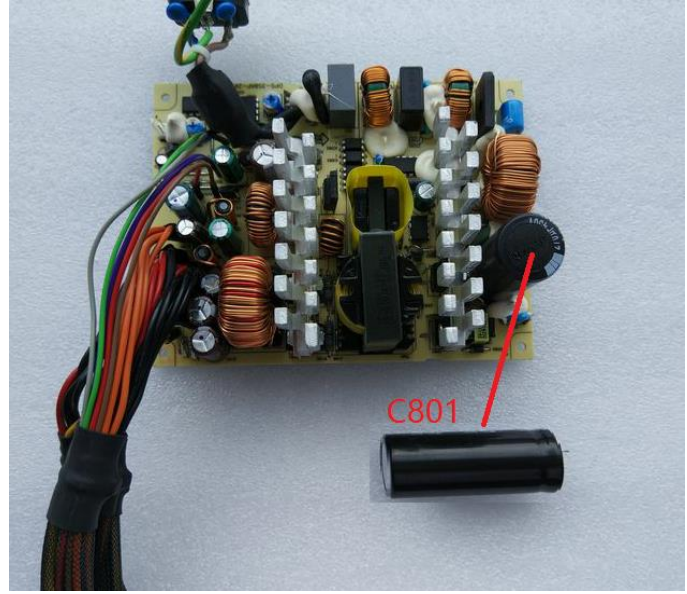


Fig 10 Remove Electrolytic Capacitors / Condensers measuring greater than 2.5 cm in diameter or height



### Attachement3 - 500W PSU (Delta) disassemble

Step1 Push latch and remove PSU



Step2 Remove daughter board

To collapsed the daughter PWB assembly, using tool , then disjuncted it from the main PWB assembly.



**Step3 Remove electrolyte-capacitor**

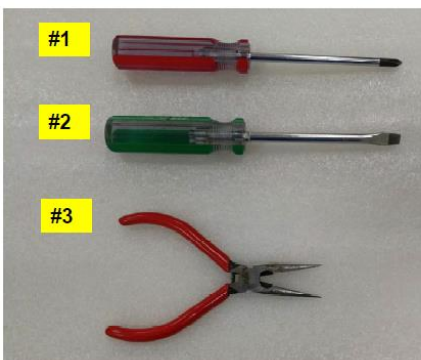
Twist-off the terminal pin of biggest electrolyte-capacitor, using tool , then remove it for selective treatment



**Attachement4 - 500W PSU (Liteon) disassemble**

**Disassembly Using Tools**

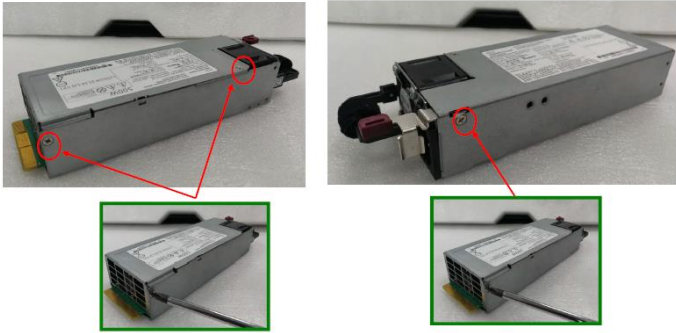
- #1. Screw Driver Cross Type
- #2. Screw Driver Flat type
- #3. Sharp Nose Pliers
- #4. Soldering Iron



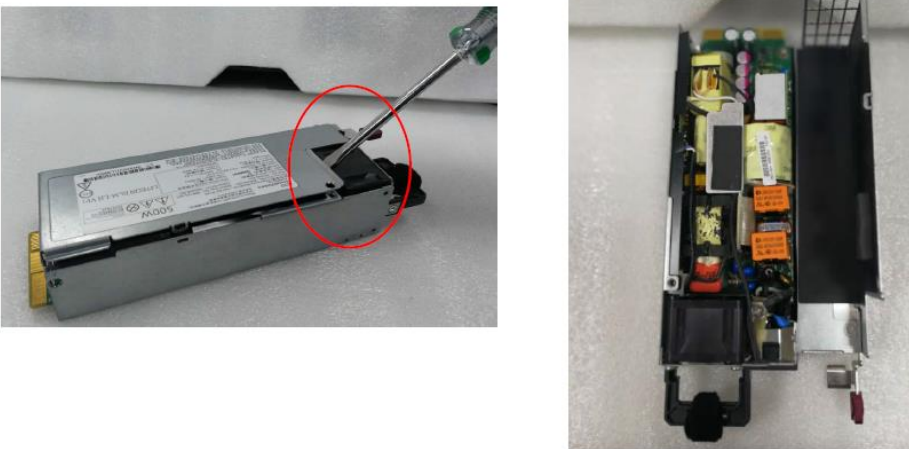


## Disassembly Flow

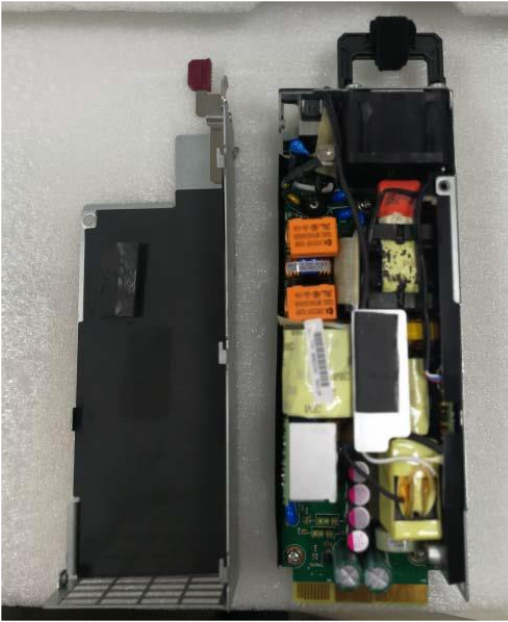
Step 1. Loosen the corner screws, using tool #1



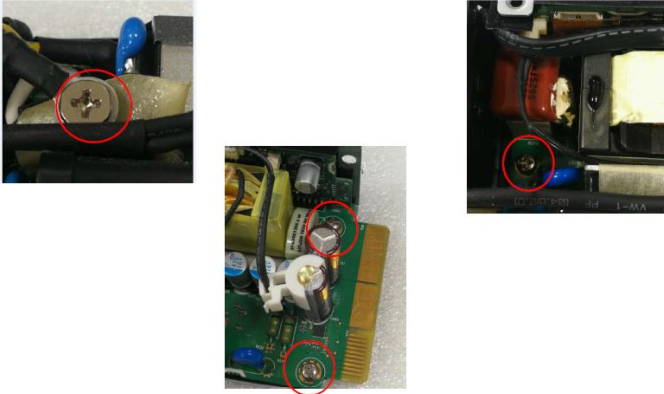
Step 2. Shifted the top cover, using tool #2, then can open that cover



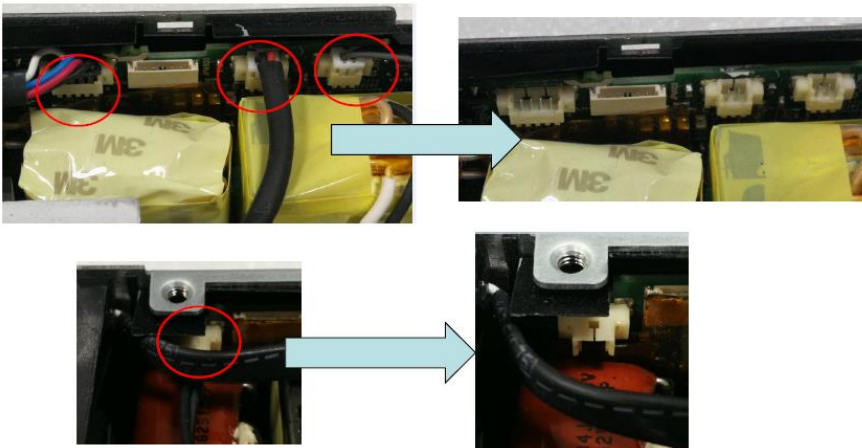
Step 3. Completed to remove the top cover



Step 4. Loosen the PWB's corner screws, using tool #1

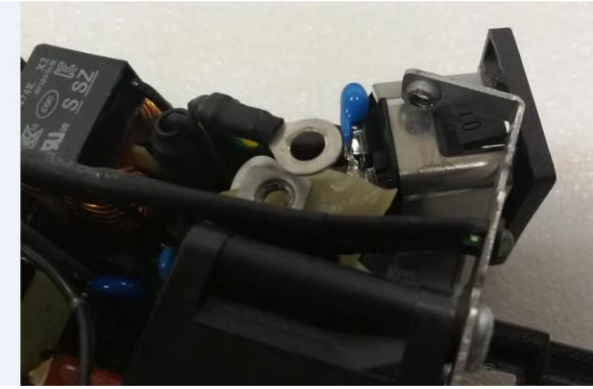


Step 5. Remove fan, LED, RT090 and RT701 cable wire from the bigger daughter PWB assembly.



Step 6. Remove AC inlet from chassis cover

MF877-00  
Template Revision C, 30-July-2018



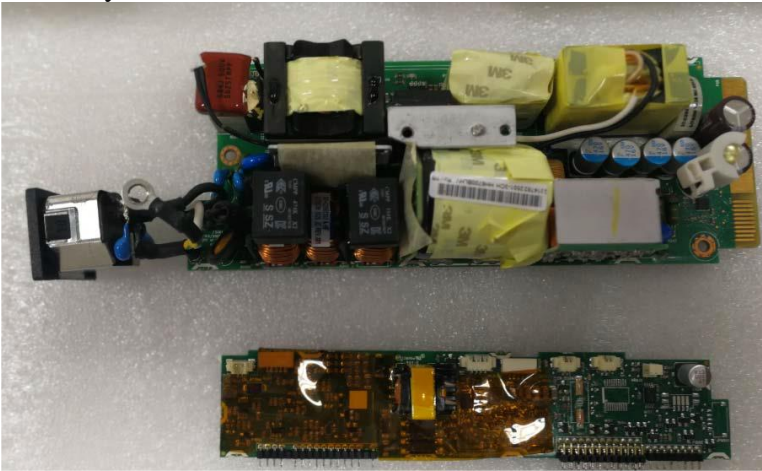
Step 7. Set-off the main PWB assembly, using tool #2, then remove it out of the chassis cover



Step 8. Remove thermal pad from top heat sink and loosen top heat sink screw, using tool #1



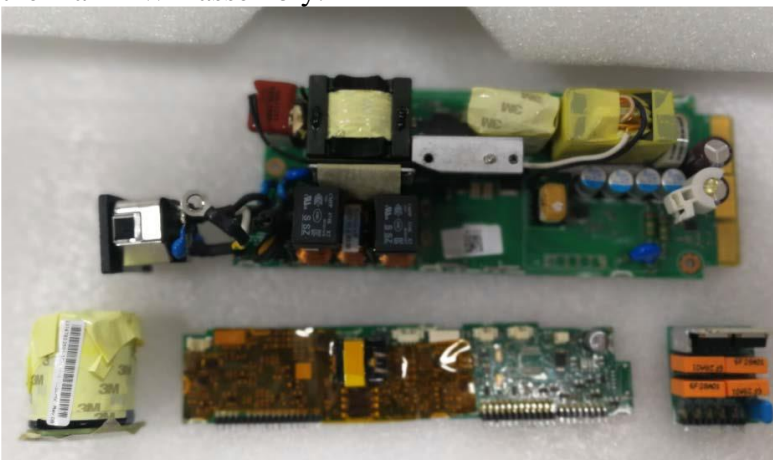
Step 9. To collapse the daughter PWB assembly, using tool #4, then disjointed it from the main PWB assembly.



Step 10. To collapse the daughter PWB assembly, using tool #4, then disjointed it from the main PWB assembly



Step 11. To collapse the biggest Electrolyte-Capacitor PWB assembly, using tool #4, then disjointed it from the main PWB assembly.



## Attachement5 - 500W PSU (CHICONY) disassemble

### Disassembly Using Tools

#1. Screw Driver cross type

#2. Cut-Pliers,

#3. Sharp Nose Pliers

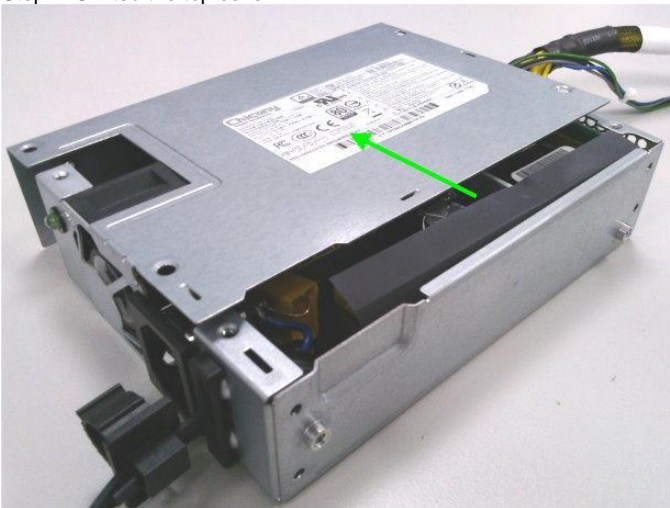


### Disassembly Flow

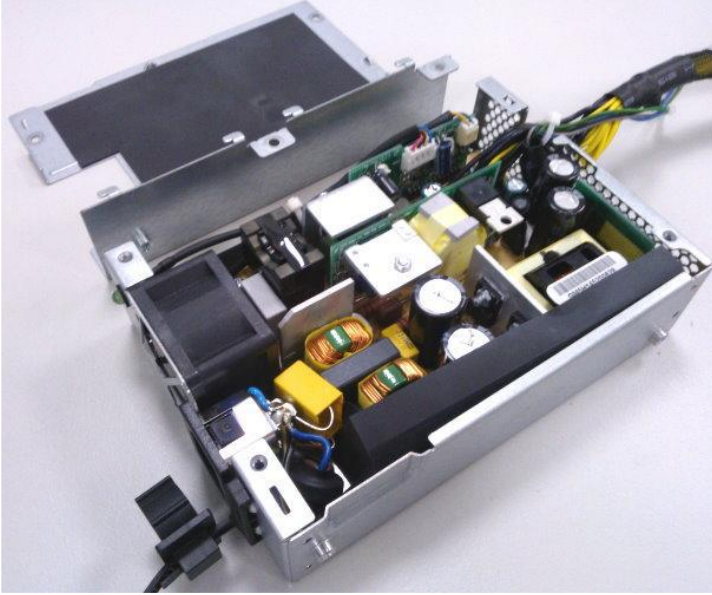
Step 1. Loosen the corners screws, using tool #1



Step 2. Shifted the top cover



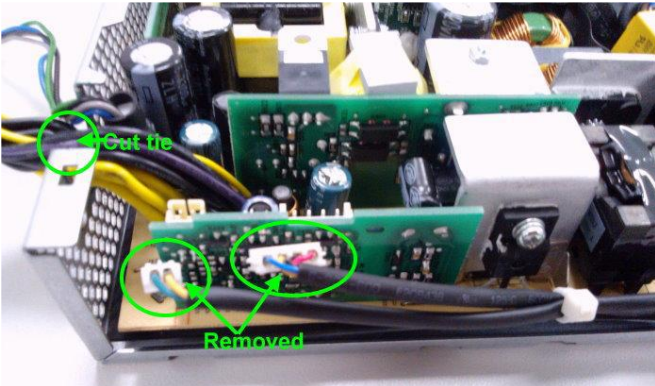
Step 3. Completed to removed the top cover

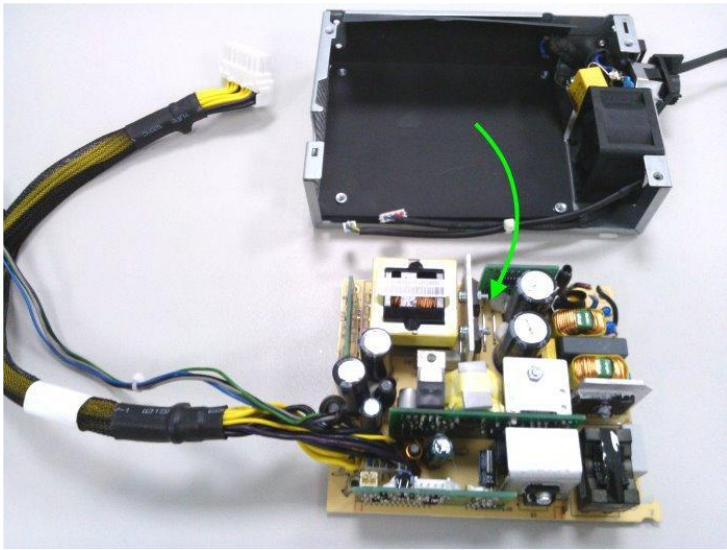


Step 4. Loosen the PWB's corners screws, using tool #1

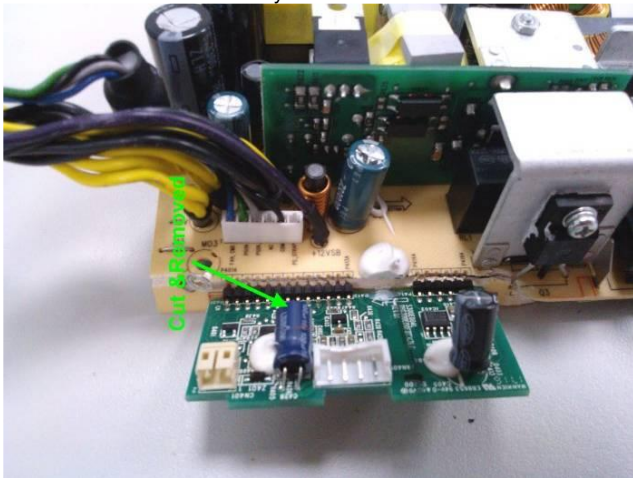


Step 5. Set-off the main PWB assembly, using tool #2, then remove it out of the chassis cover

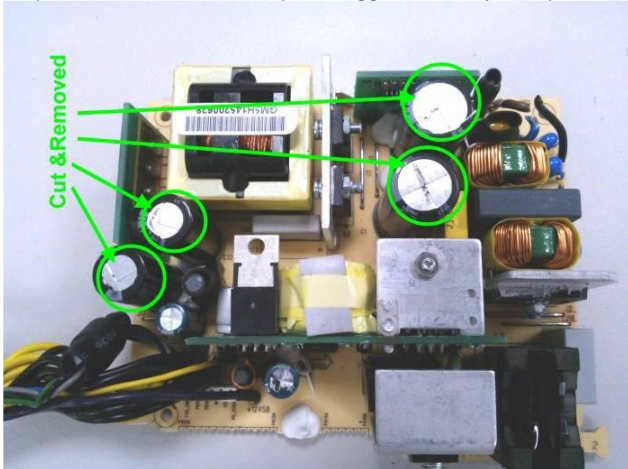


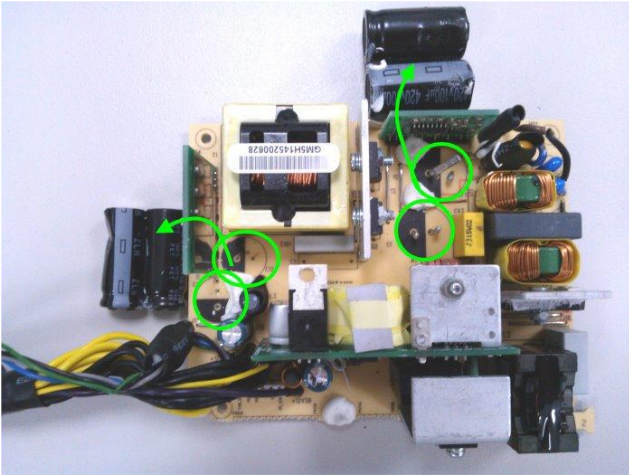


Step 6. To collapsed the daughter PWB assembly, using tool #3, then disjointed them from the main PWB assembly



(Note: Their area > 10cm<sup>2</sup>, which need selective treatment per Annex VII of WEEE directive 2012/19/EU)  
Step 7. Twist-off the terminal pin of biggest Electrolyte-Capacitor, using tool #3, remove it for selective treatment





(Note: Its diameter or height > 2.5cm, which need selective treatment per Annex VII of WEEE directive 2012/19/EU)

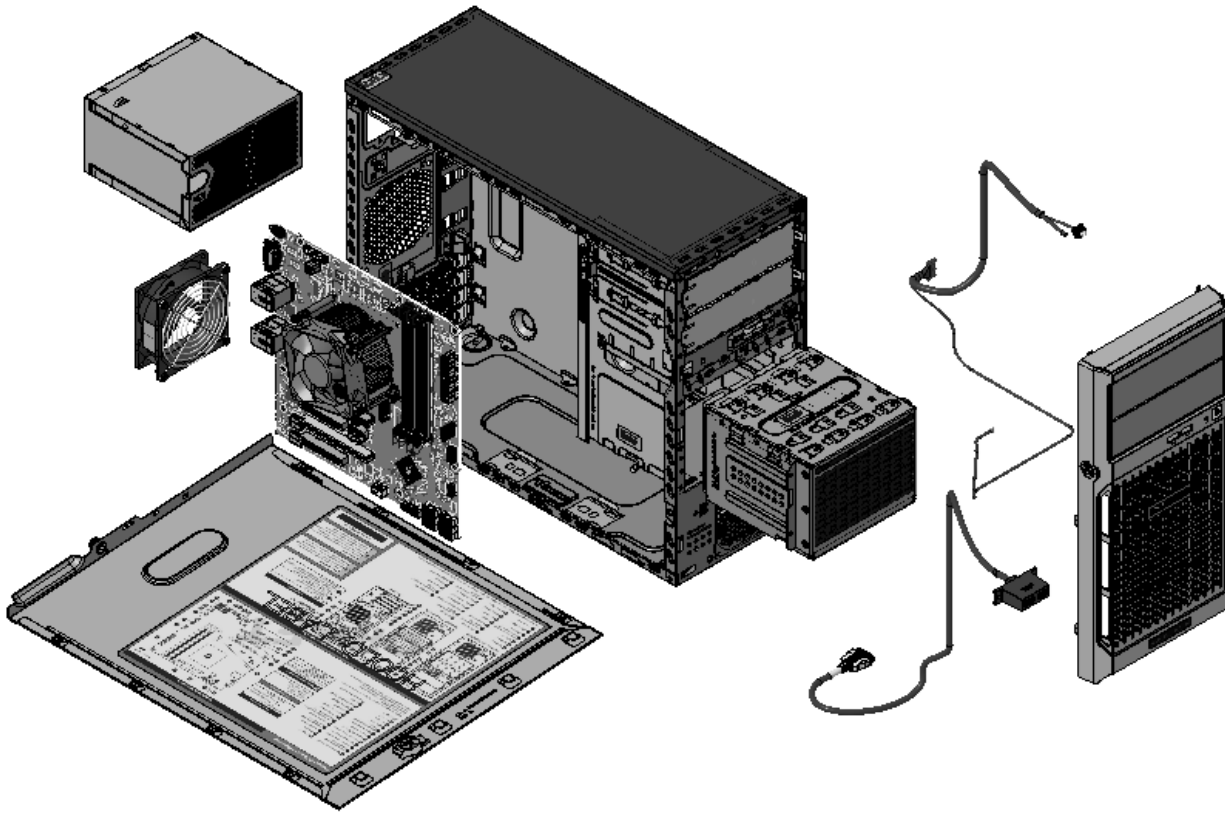
Step 8. Disassembled which PWBs in order to selective treatment



(Note: Their area > 10cm<sup>2</sup>, which need selective treatment per Annex VII of WEEE directive 2012/19/EU)



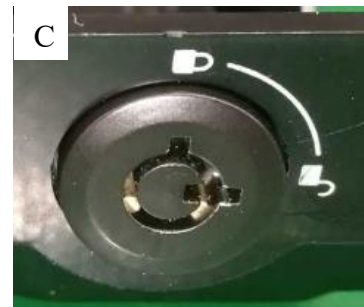
**System exploding drawing**



## Attachment 1 –Remove front bezel

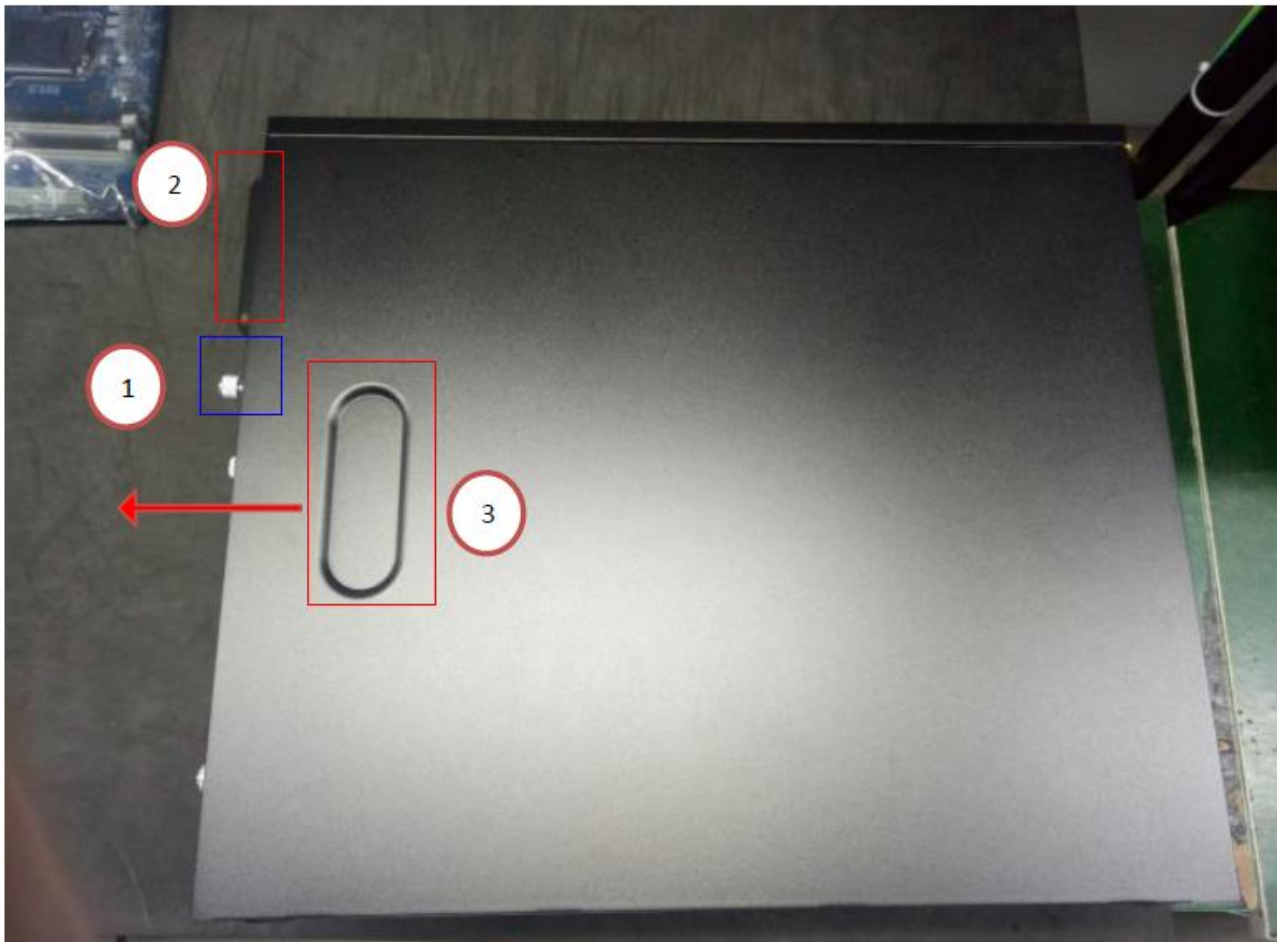


Remove the front bezel from the left side.



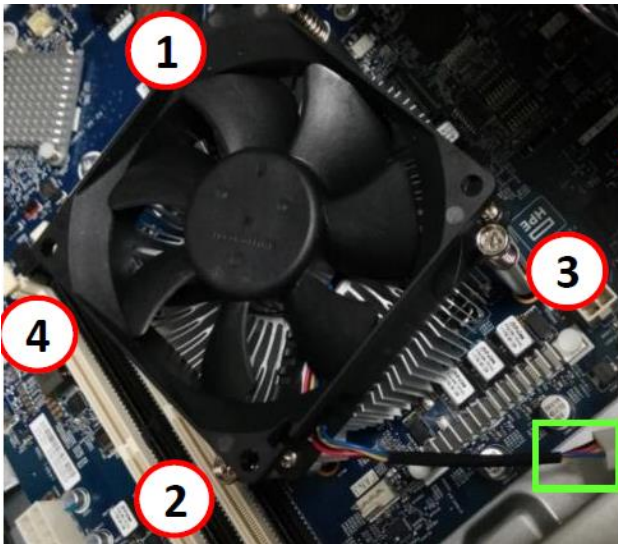
- A. Loosen the screw to remove the latch
- B. Use Sharp Nose Pliers to remove the nut
- C. Remove the key lock

## Attachment 2 –Remove side cover



Loose the thumb screw and pull backward the side cover

### Attachment 3 – Release CPU HS and CPU



Loose the CPU fan screw and remove the and CPU fan latch and CPU HS



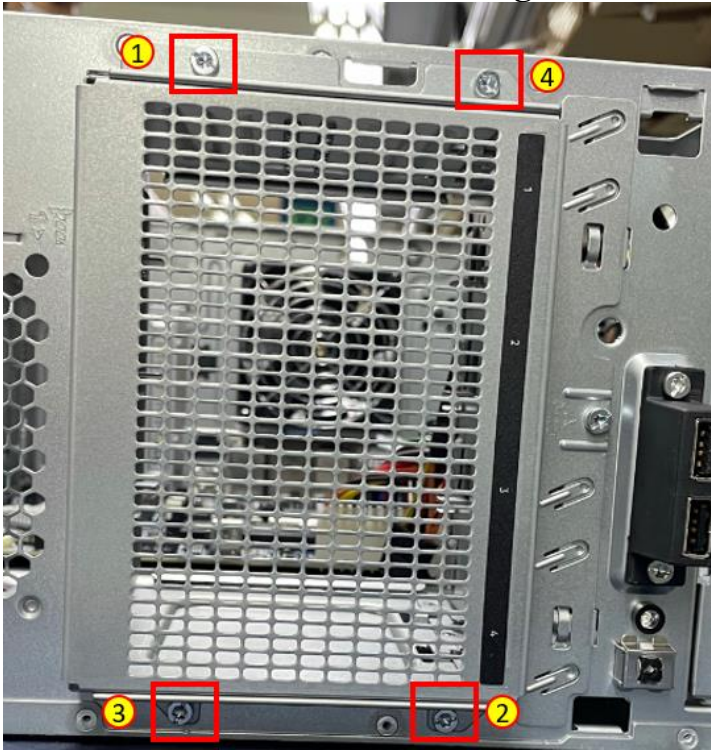
Remove CPU.

### Attachment 4 –Release DIMM



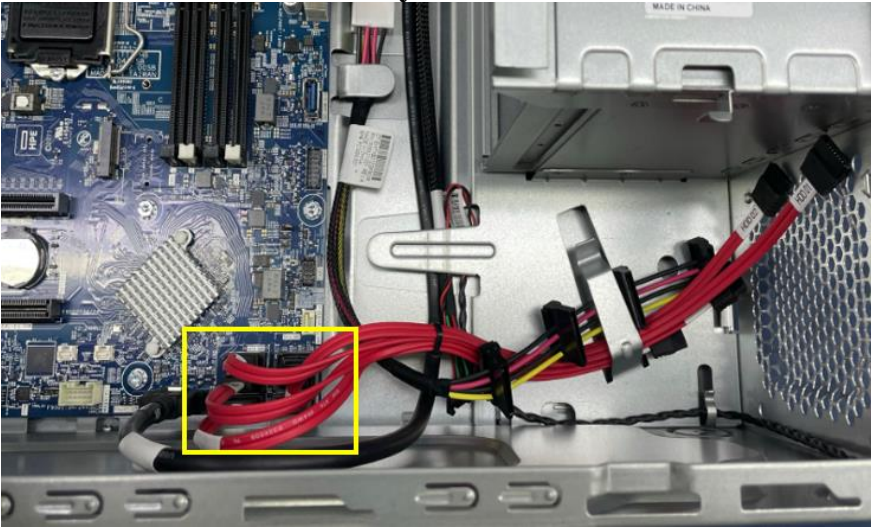
Release the DIMM

## Attachment 5 –Remove HDD cage

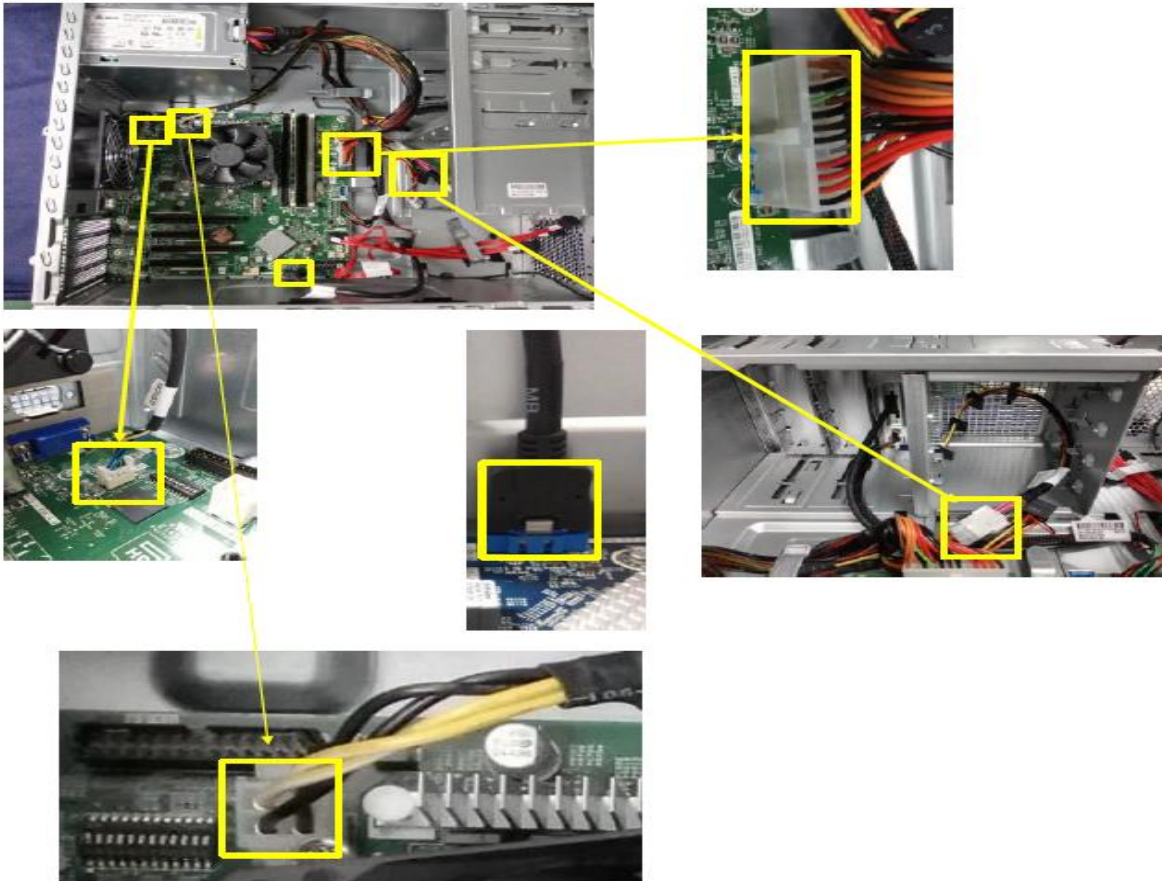


Release 4 screw to remove the HDD cage.

## Attachment 6 –Remove system cables

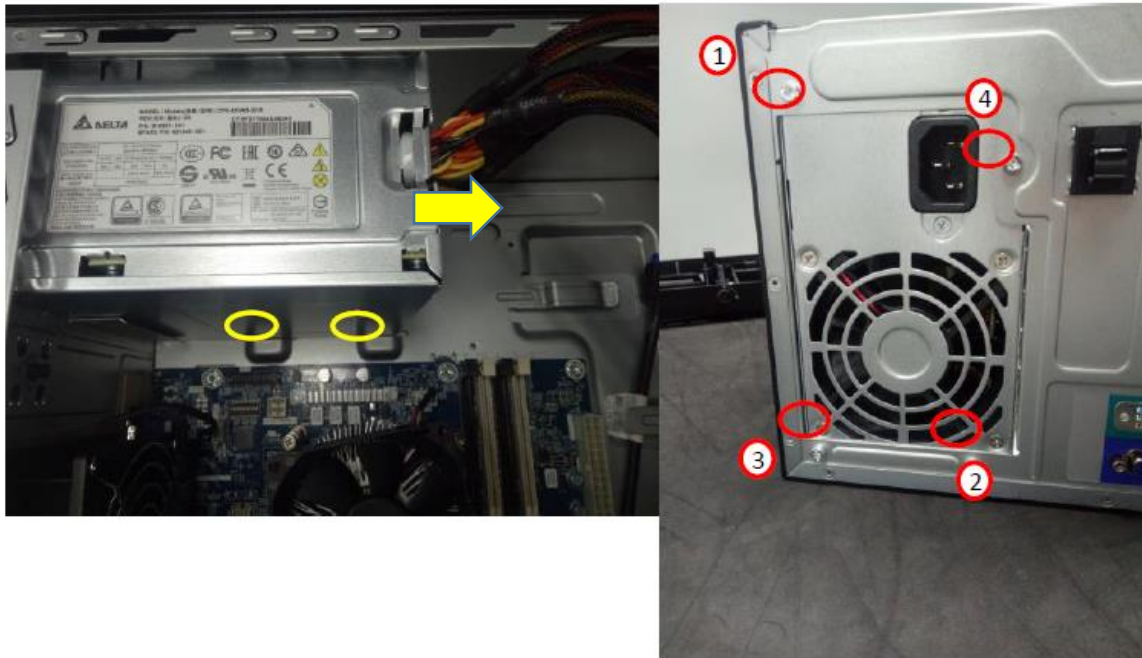


Remove signal SATA cables



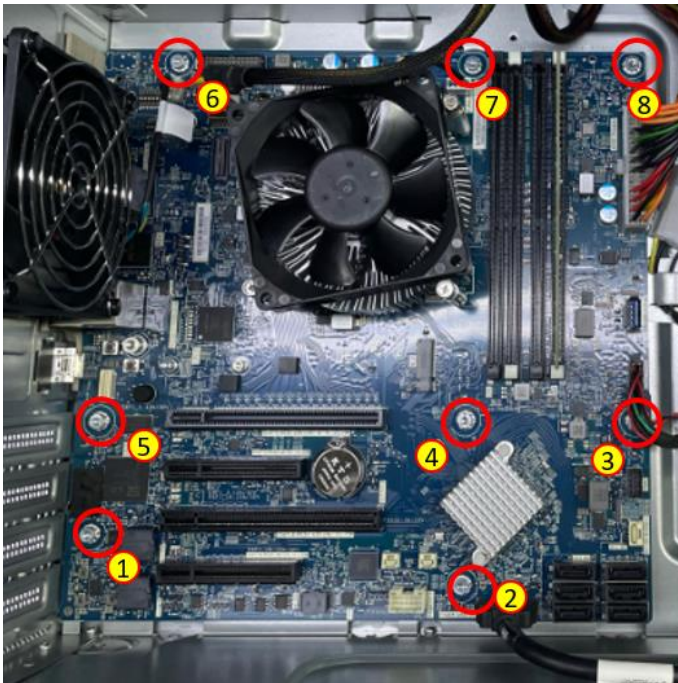
Remove all cables as yellow mark shown.

## Attachment 7 –Remove Power Supply



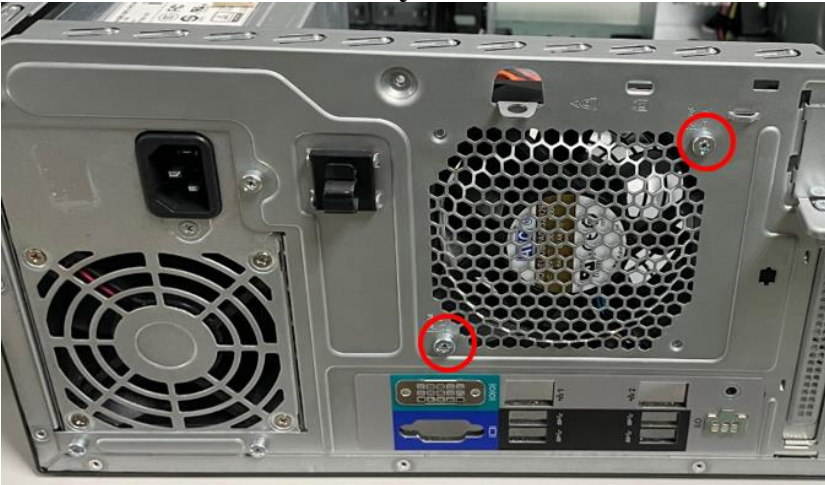
Release 4 screw from back side of chassis and remove the power supply.

## Attachment 8 –Remove system board



Remove 8 screw and release the system board.

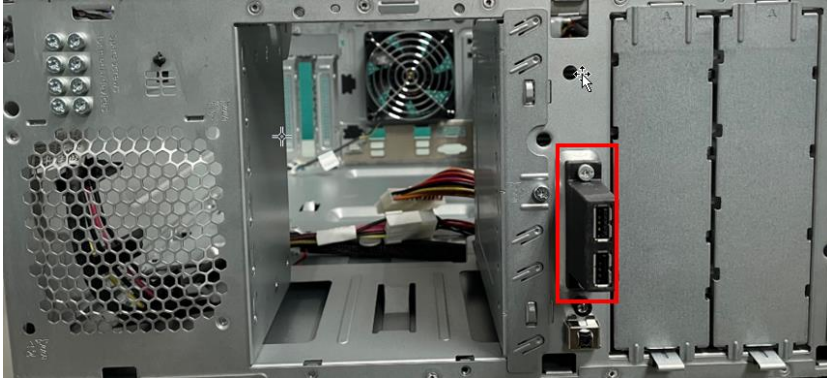
## Attachment 9 –Remove system fan



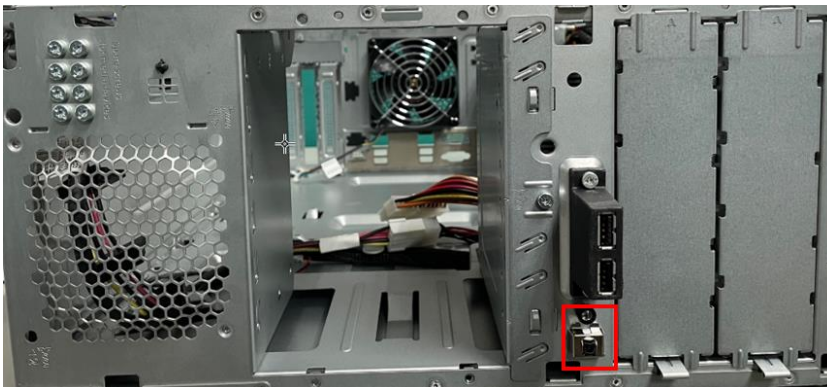
Lose 2 screw to remove system fan.

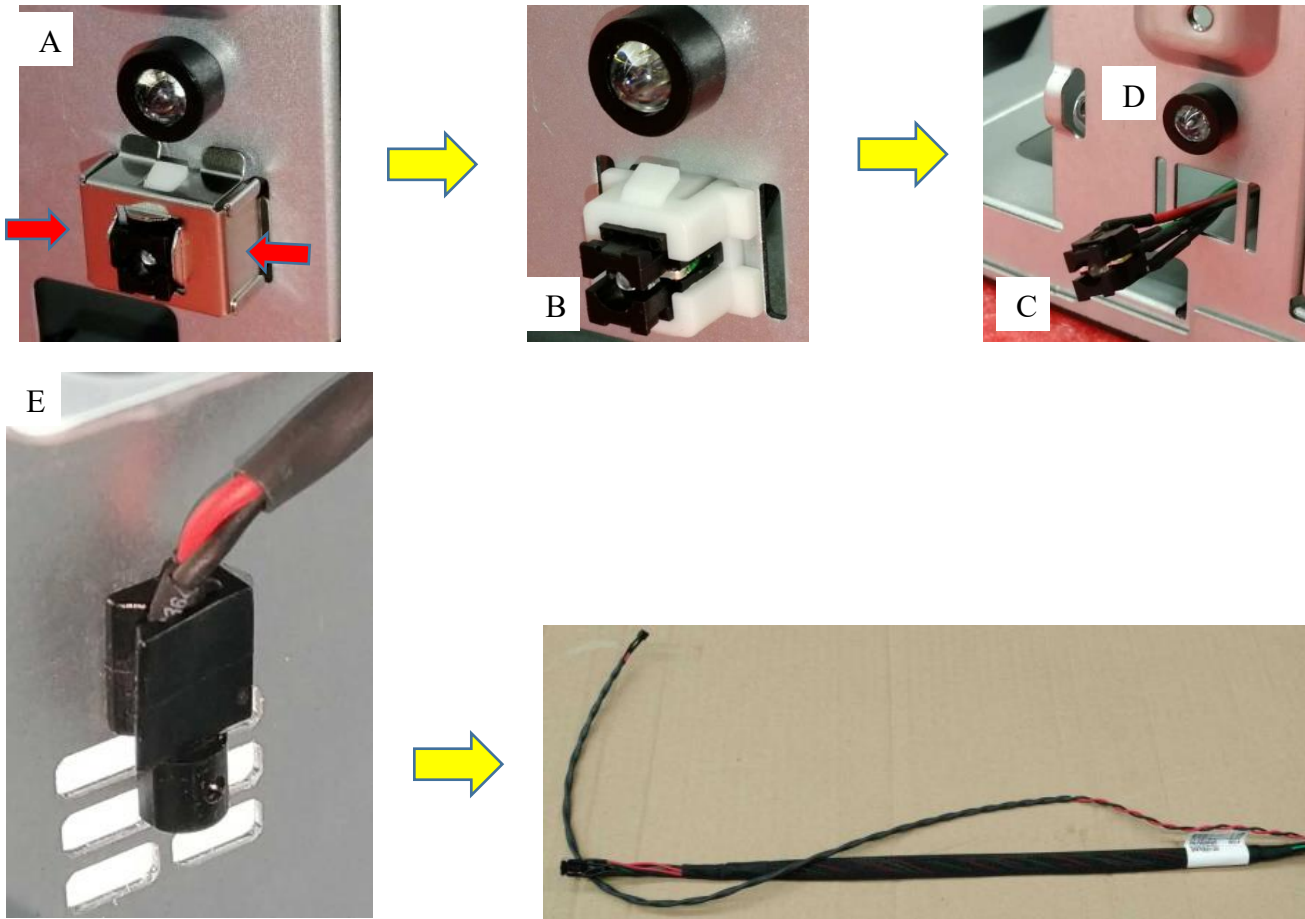


## Attachment 10 –Remove SMC cables



Release 2 screw to remove USB cable.





- A. Press the shielding to pull backward to the chassis.
- B. Use Sharp nose pliers to remove the switch cable
- C. Use scissors to cut off the switch.
- D. Push the lamp to remove led cable  
Release the sensor cable f