

Contents

- EloPOS Z30 (1)
- 150W DC Power Adapter and cables
- M3x5mm I/O cover security screw (1)
- Stand Mounting bracket and screw (1)
- Tie-wraps (2)

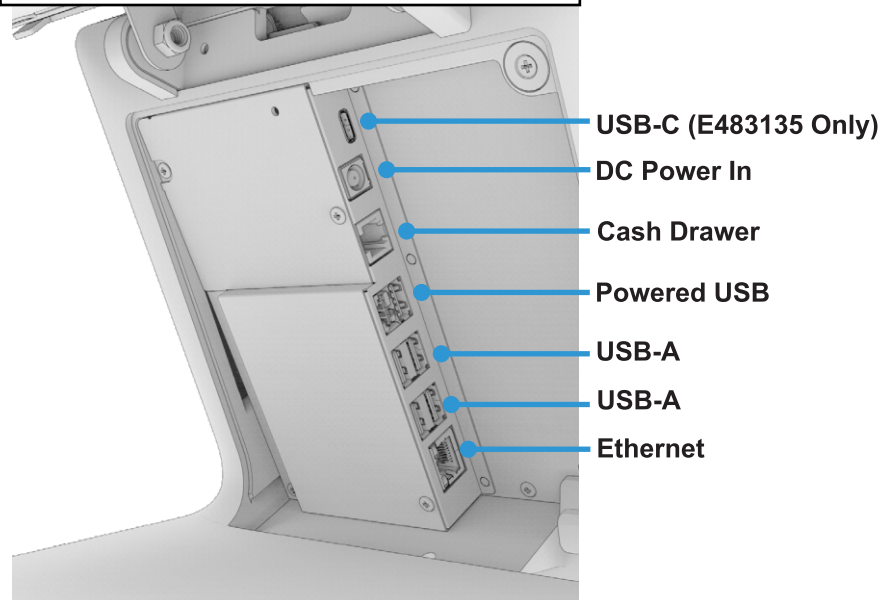


Quick Installation Guide

EloPOS Z30

Revision C
P/N E232225

I/O Connections



Elo Touch Solutions Technical Support
Online self-help: www.elotouch.com/support

America
800-ELO-TOUCH
Tel +1 408 597 8000
EloSales.NA@elotouch.com

Asia-Pacific
Tel +86 (21) 3329 1385
EloAsia@elotouch.com

Europe(EMEA)
Tel +32 16 930 136
EMEA.Sales@elotouch.com

The information in this document is subject to change without notice. Elo Touch Solutions, Inc. and its Affiliates (collectively "Elo") makes no representations or warranties with respect to the contents herein, and specifically disclaims any implied warranties of merchantability or fitness for a particular purpose. Elo reserves the right to revise this publication and to make changes from time to time in the content hereof without obligation of Elo to notify any person of such revisions or changes.

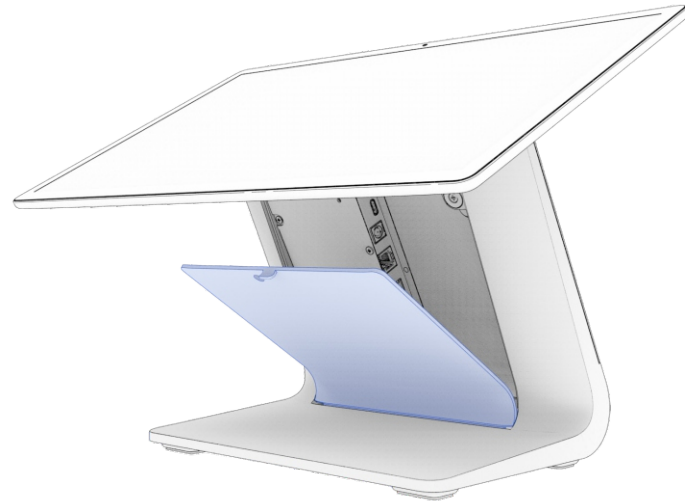
No part of this publication may be reproduced, transmitted, transcribed, stored in a retrieval system, or translated into any language or computer language, in any form or by any means, including, but not limited to, electronic, magnetic, optical, chemical, manual, or otherwise without prior written permission of Elo Touch Solutions, Inc.

Elo and the Elo logo are either trademarks or registered trademarks of Elo Touch Solutions, Inc.



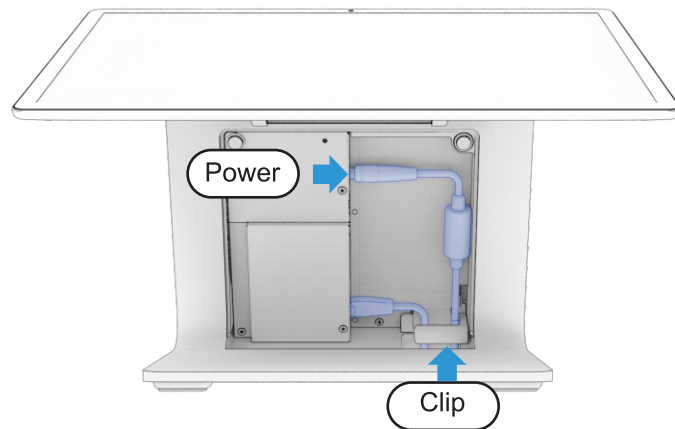
Go to www.elotouch.com/support to download user manual.

1



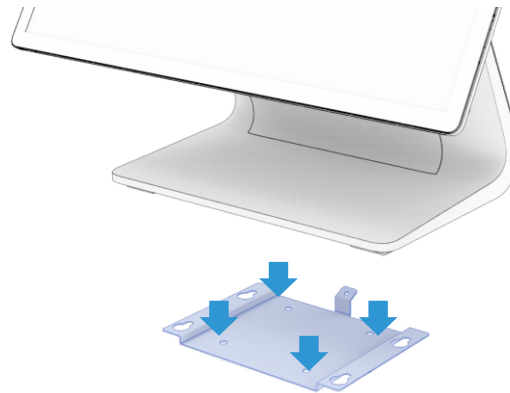
Remove the cable cover door to access the I/O connections.

2



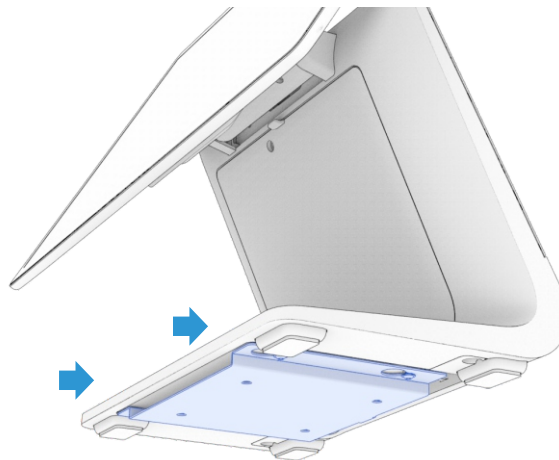
Route the DC power cable through the hole in the bottom of the stand and connect it as shown. Connect other I/O cables as needed (see back page) Make sure all cables route through the plastic clip at the bottom.

3 Mount the system to a table (optional). Skip to Step 6 if not mounting to a table.



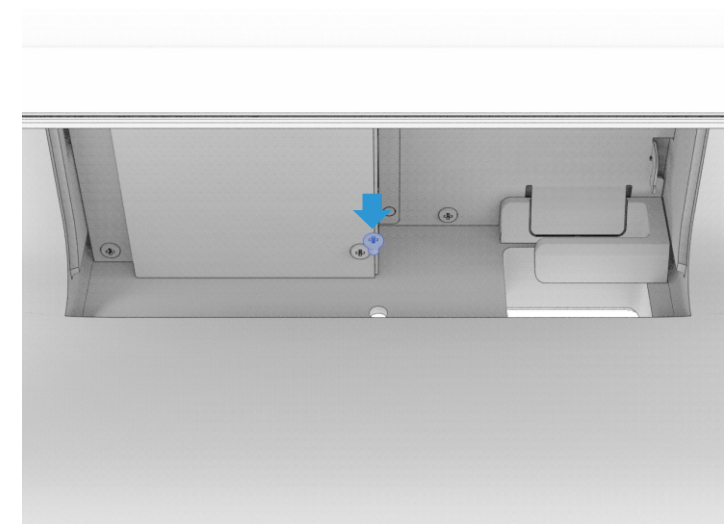
Secure the mounting bracket to the table using appropriate screw type and length. Elo suggests M4 or #10 screw diameter.

4



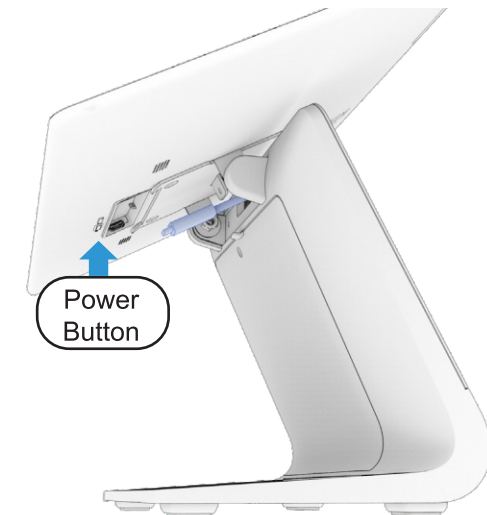
Lower the system onto the bracket and slide it back ensuring the bracket engages the screws on the bottom side.

5



Secure the system to the bracket using the screw included in the accessory box.

6



Power on the system when installation is complete.